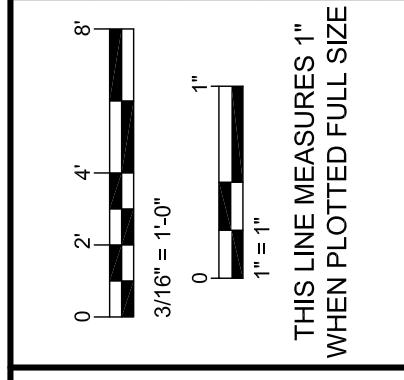
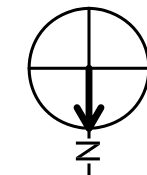
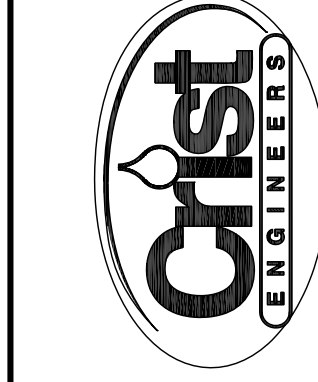


GROUND LEVEL PLAN
SCALE: 3/8" = 1'-0"



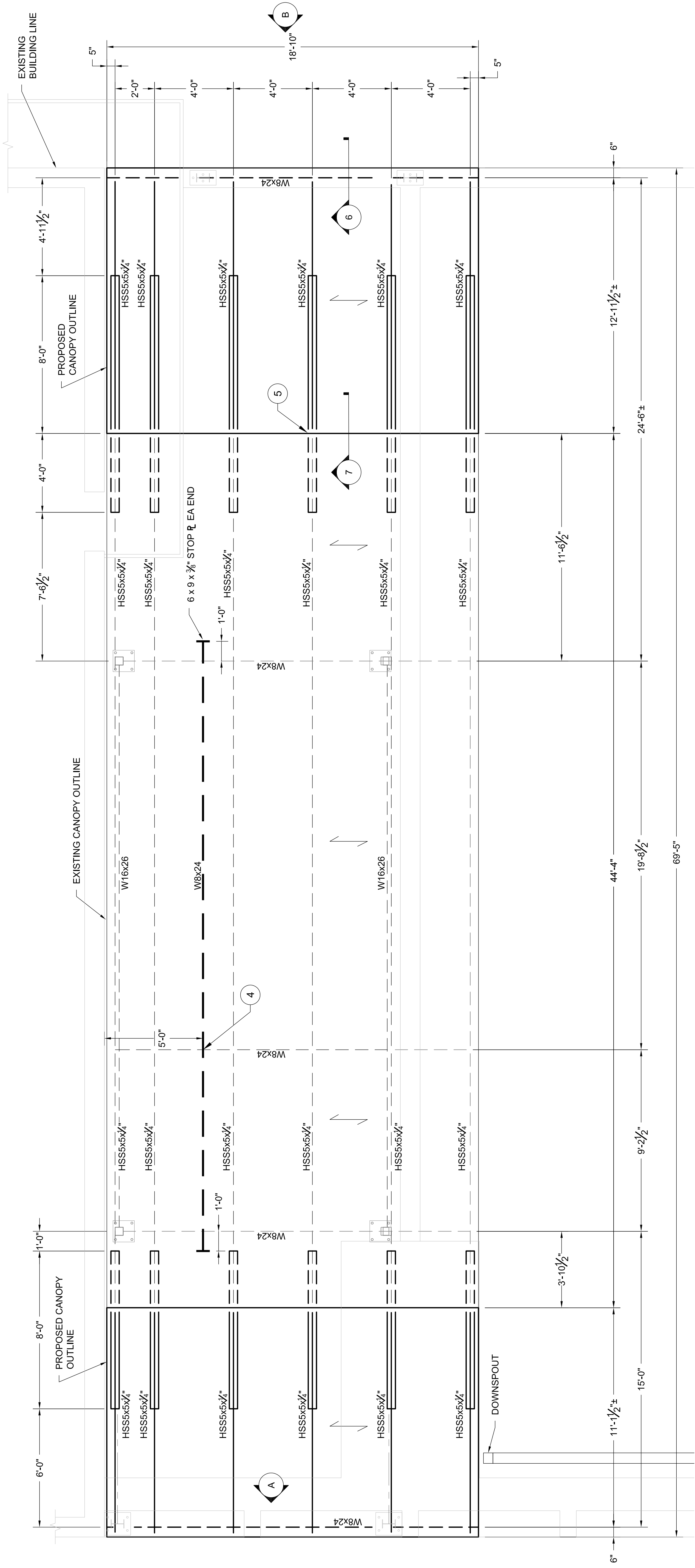
DESIGNED:	ST
DRAFTED:	RDW
CHECKED:	ST
DATE:	JAN. 2017



CRIST ENGINEERS, INC.
CONSULTING ENGINEERS
205 EXECUTIVE COURT
FELICITY, ARKANSAS 72205
TELEPHONE: (501) 684-1552
FAX: (501) 684-8879
WWW.CRISTENGINEERS.COM

STATE OF ARKANSAS
REGISTERED PROFESSIONAL ENGINEER
No. 7341
MARK E. RIMM
5/15/2017

REV. NO.	DATE	DRWN	CHKD	REMARKS



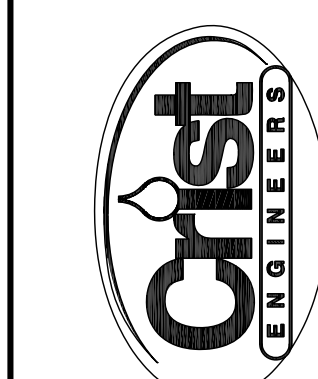
CANOPY ROOF PLAN
SCALE: 3/8" = 1'-0"

- NOTE:**
1. ALL CANOPY STEEL TO BE GALVANIZED.
 2. PROVIDE TYPE "PSD" 22 GAUGE METAL DECKING BY "MBCI METAL ROOF AND WALL SYSTEMS" OR EQUIVALENT. FASTEN DECK TO SUPPORTS USING #12 SELF TAPPING SCREWS @ 12" O.C. IN 36/4 PATTERN. SIDELAP CONNECTIONS : (1) #10 SELF TAPPING SCREWS PER JOIST SPACE.
 3. WELDING PER AWS D1.1 BY CERTIFIED WELDERS.
 4. FIELD VERIFY DIMENSIONS BEFORE FABRICATION.

REV. NO.	DATE	DRWN	CHKD	REMARKS

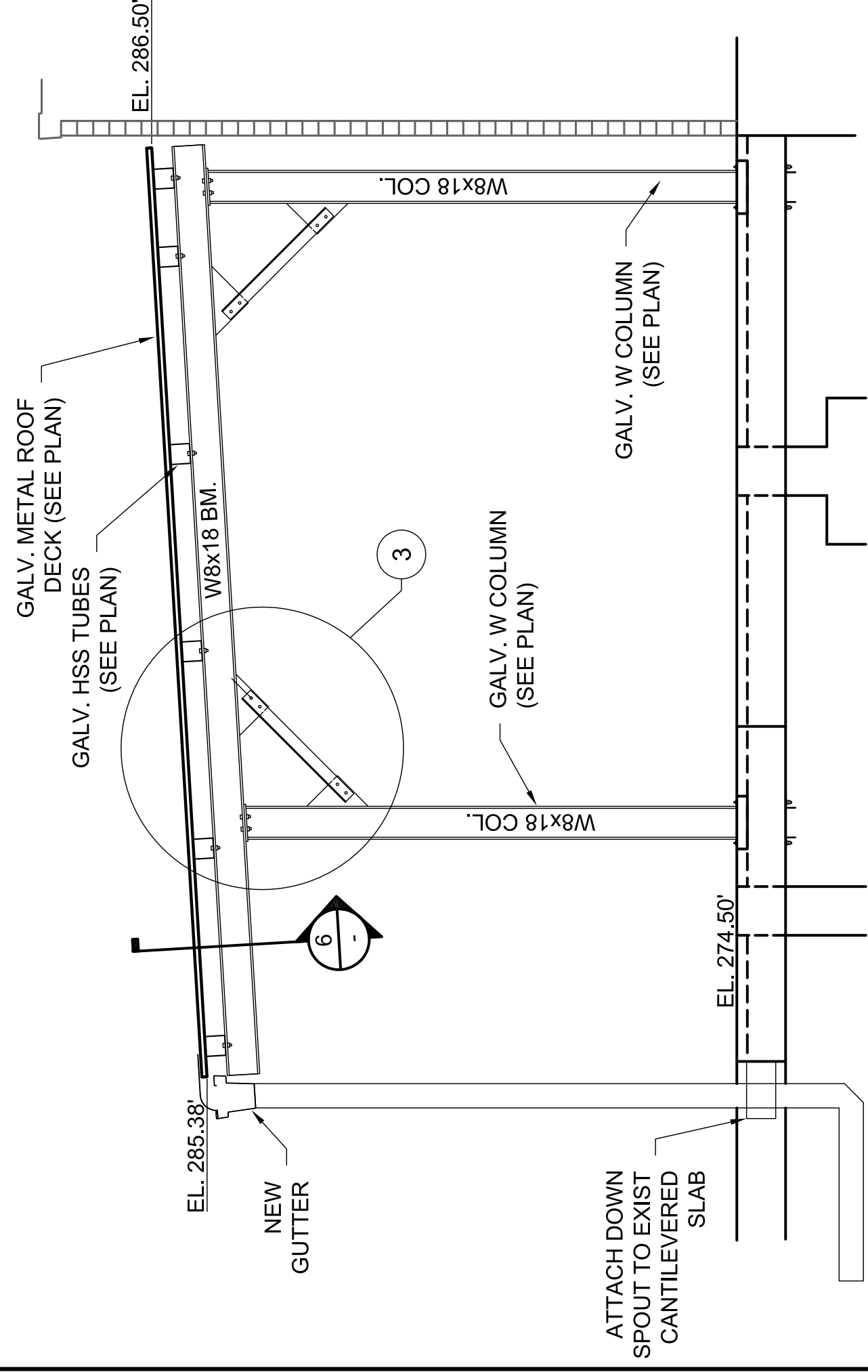


DESIGNED:	ST
DRAFTED:	RDW
CHECKED:	ST
DATE:	JAN. 2017

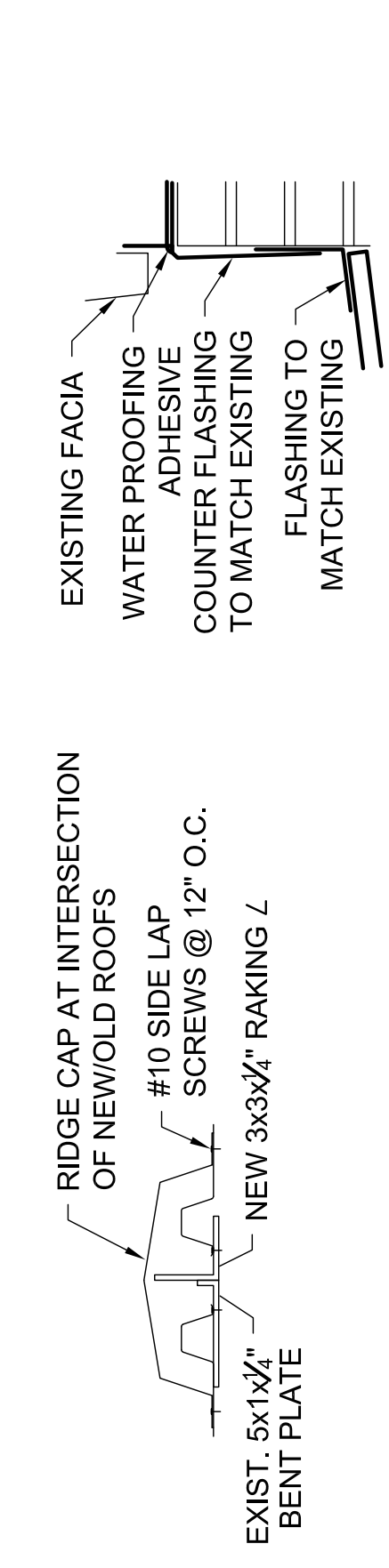


CRIST ENGINEERS, INC.
CONSULTING ENGINEERS
205 EXECUTIVE COURT
FELICITY, ARKANSAS 72205
TELEPHONE: (501) 684-1552
FAX: (501) 684-8870
WWW.CRISTENGINEERS.COM

PARAGOULD, ARKANSAS
PARAGOULD LIGHT, WATER, & CABLE
CANOPY ROOF PLAN

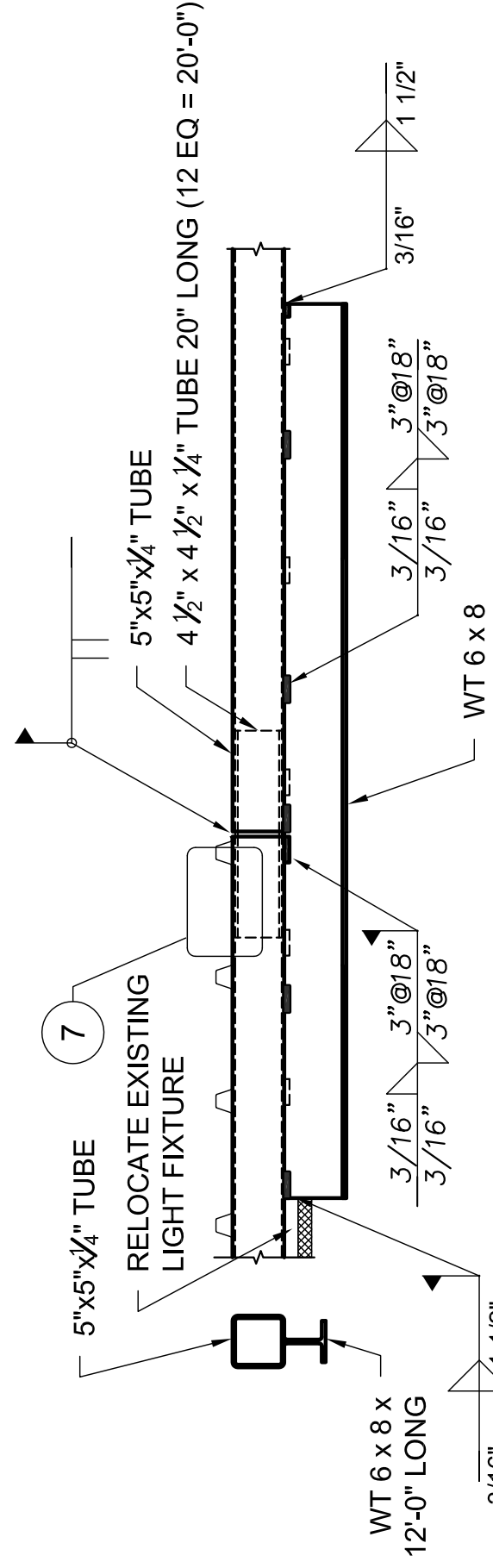


ELEVATION A
SCALE: 3/8" = 1'-0"

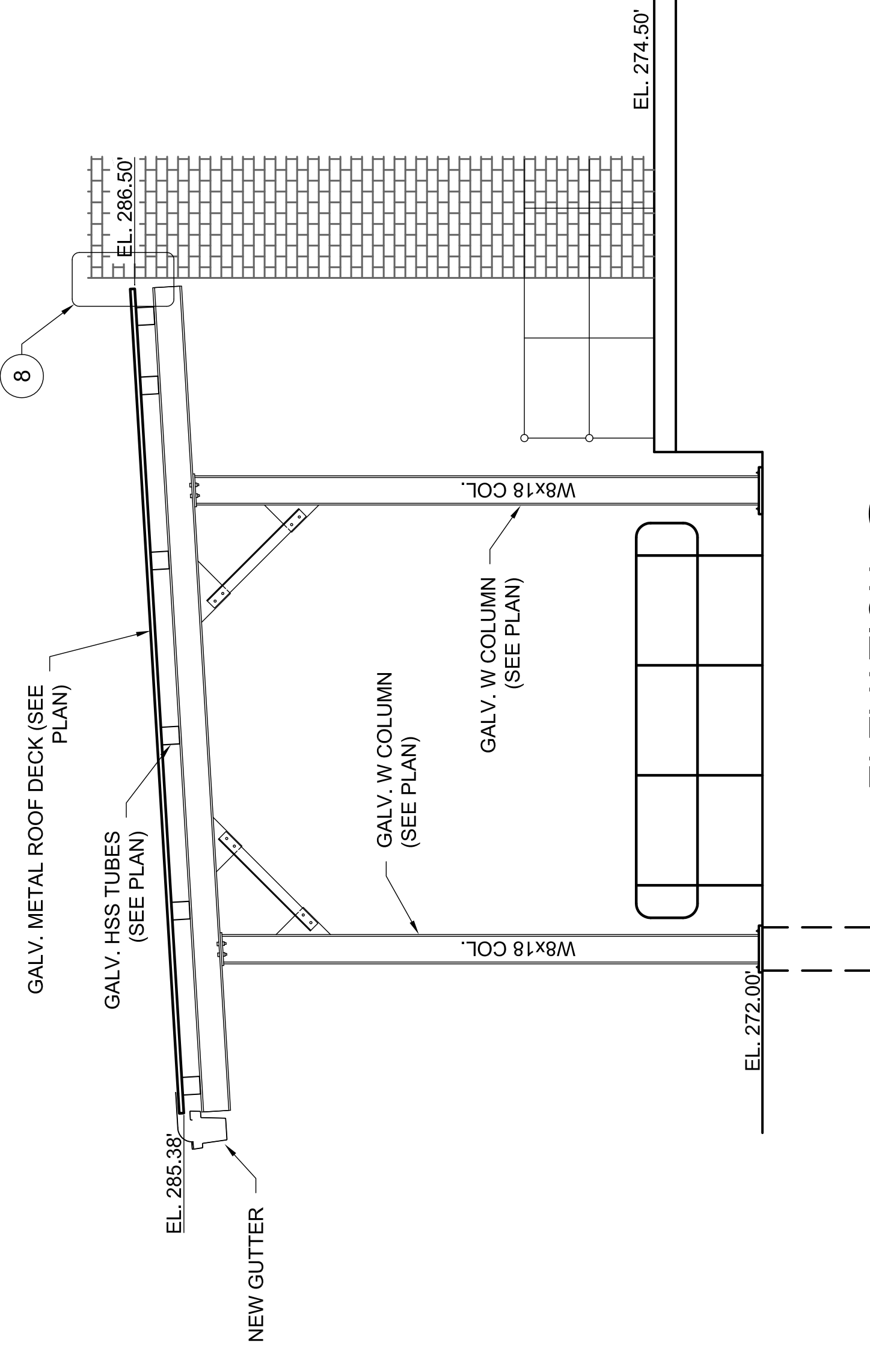


RIDGE CAP DETAIL 7
SCALE: 1 1/2" = 1'-0"

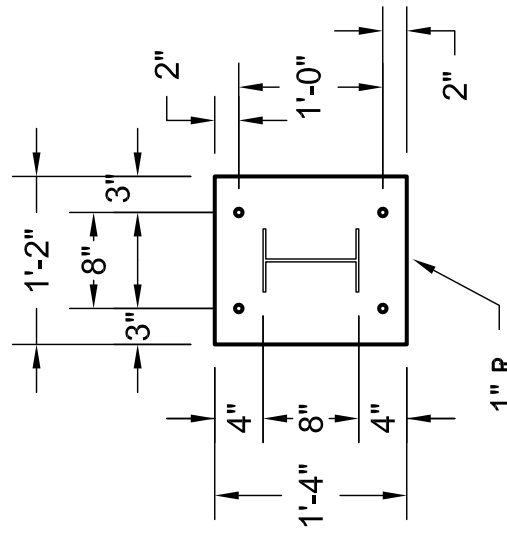
FLASHING DETAIL 8
SCALE: 1 1/2" = 1'-0"



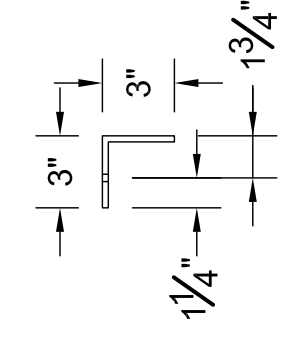
ROOFING JOINT DETAIL 5
SCALE: 3/8" = 1'-0"



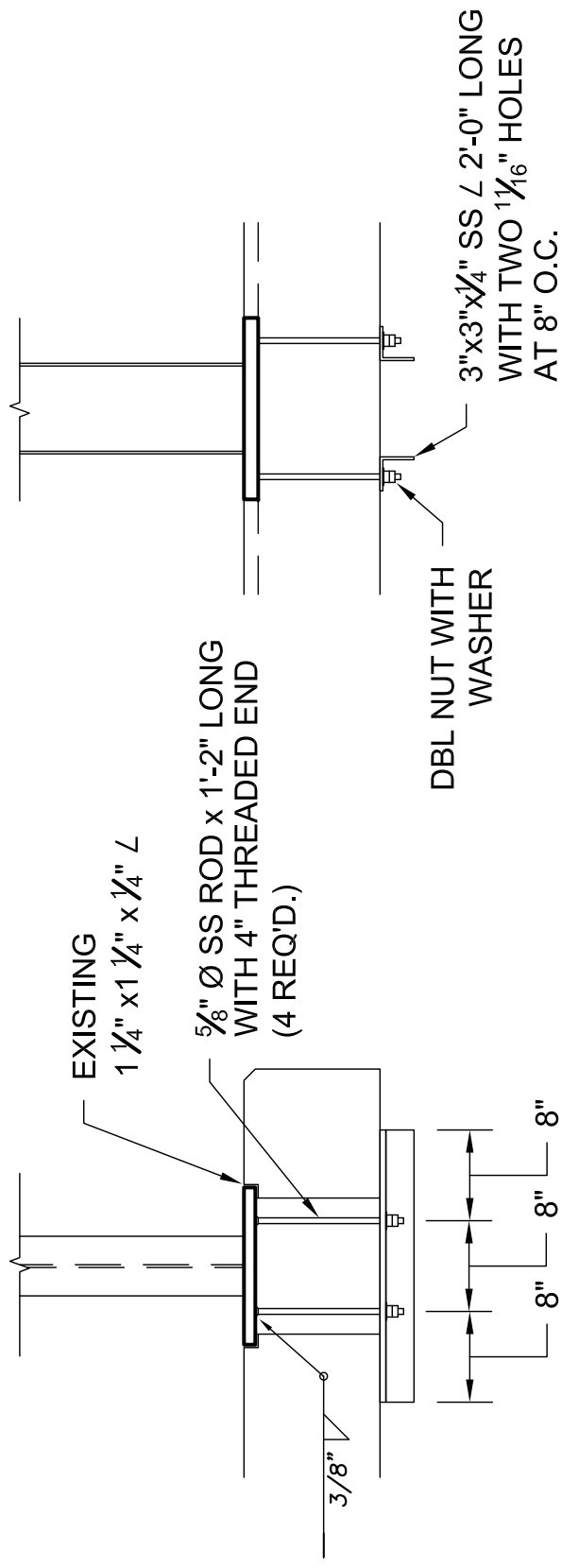
ELEVATION B
SCALE: 3/8" = 1'-0"



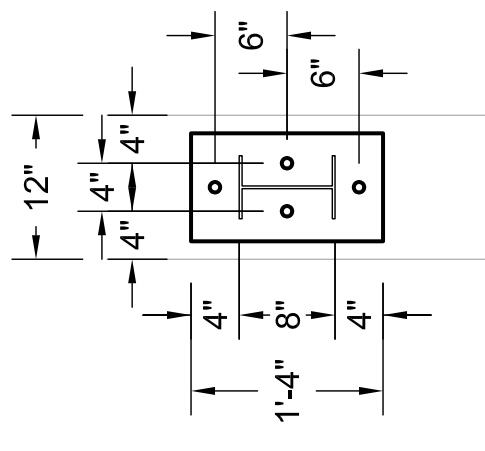
BASEPLATE DETAIL
SCALE: 3/8" = 1'-0"



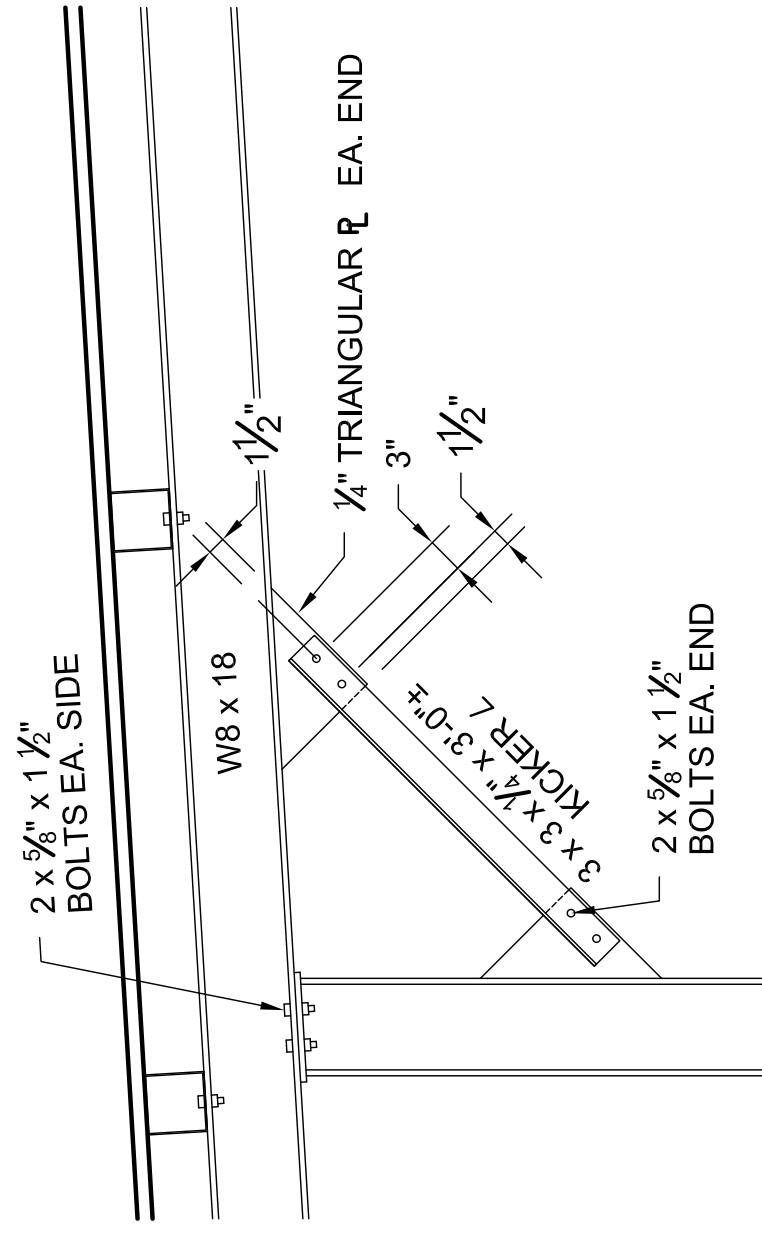
ANGLE DETAIL
SCALE: 3/8" = 1'-0"



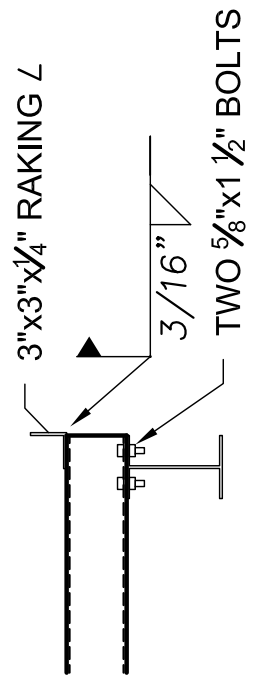
COLUMN FLOOR MOUNTING DETAIL 1
SCALE: 1-1/2" = 1'-0"



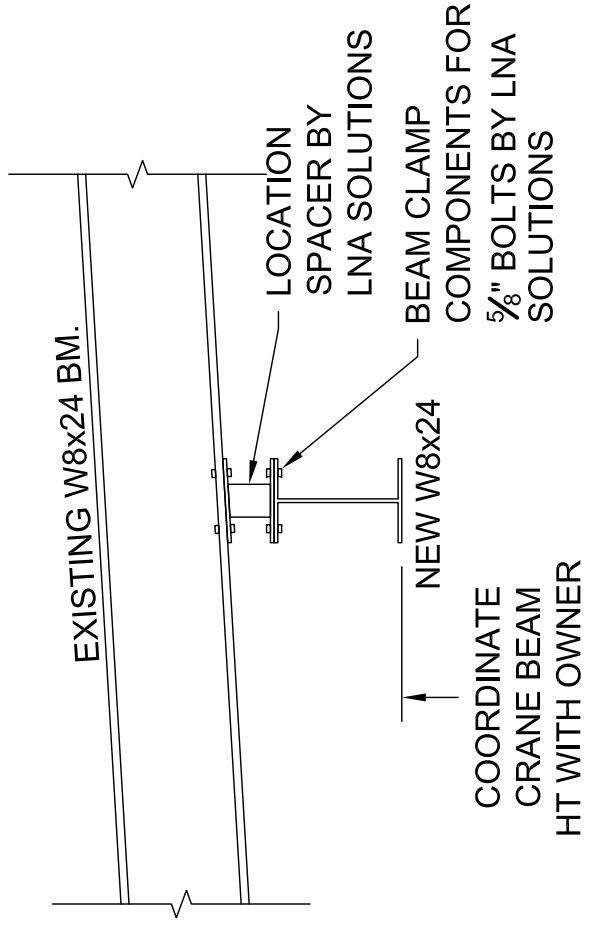
COLUMN WALL MOUNTING DETAIL 2
SCALE: 1-1/2" = 1'-0"



KICKER DETAIL 3
SCALE: 3/8" = 1'-0"



SECTION 6
SCALE: 1" = 1'-0"



DETAIL 4
SCALE: 1" = 1'-0"

REFERENCE CONNECTION NO. 18 BY LNA SOLUTIONS 1-888-724-2323 AND WWW.LNASOLUTIONS.COM. USE LNA SOLUTIONS CONNECTION COMPONENTS OR EQUAL.

REV. NO.	DATE	DRWN	CHKD	REMARKS

Mark E. Ramm
 5/15/2017

DESIGNED:	ST
DRAFTED:	RDW
CHECKED:	ST
DATE:	JAN. 2017

CRIST ENGINEERS, INC.
 CONSULTING ENGINEERS
 205 EXECUTIVE COURT
 FORT COCKER, ARKANSAS 72205
 TELEPHONE: (501) 684-1552
 FAX: (501) 684-8870
 WWW.CRISTENGINEERS.COM

PARAGOULD, ARKANSAS
PARAGOULD LIGHT, WATER, & CABLE

JOB NO.	1646
SHEET NO.	3

SECTIONS AND DETAILS