
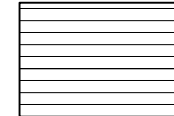
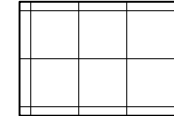
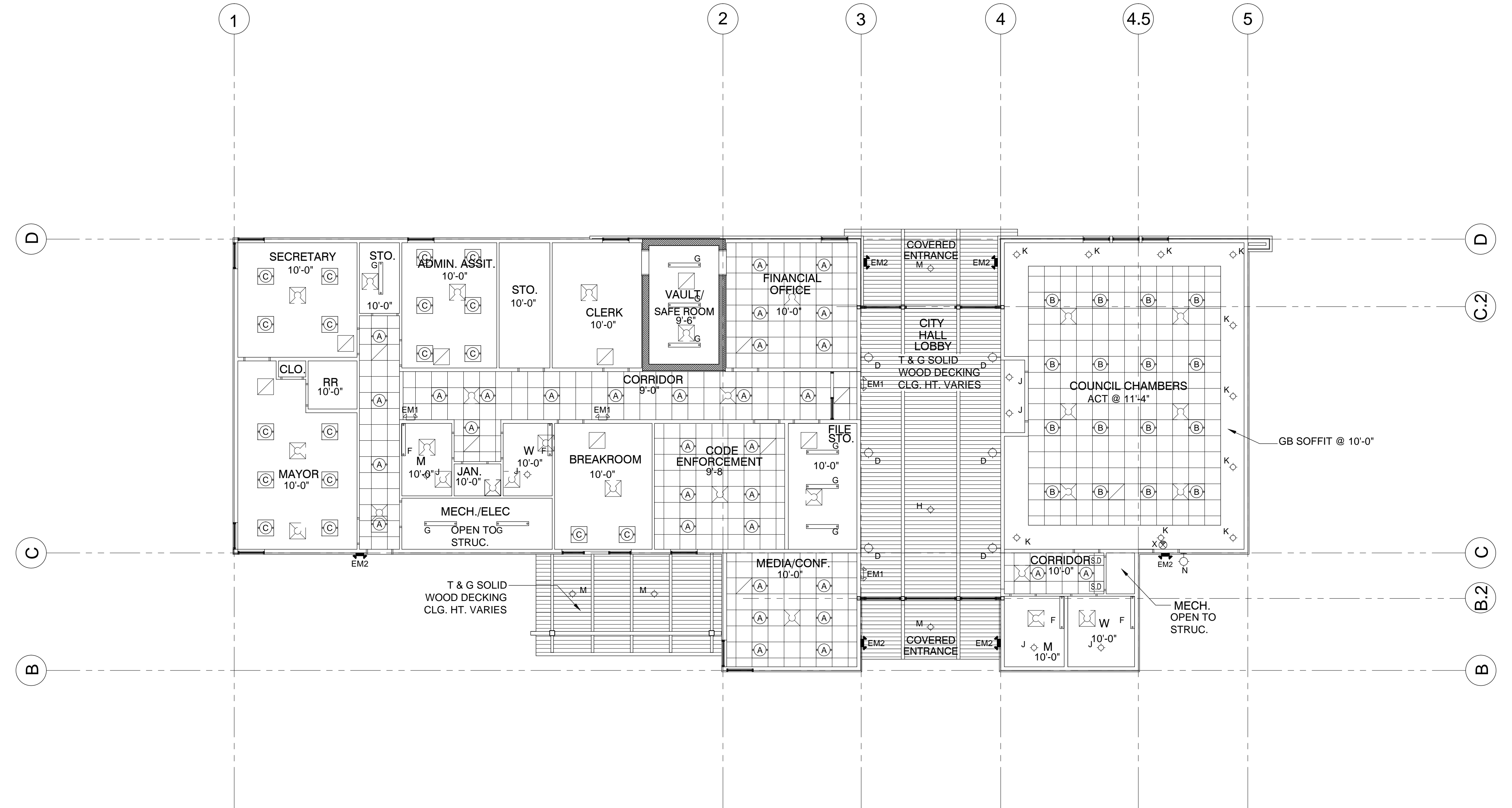


ETC ENGINEERS & ARCHITECTS, INC.
 Environmental, Technical Consultants, Inc.
 ENGINEERING & ARCHITECTURAL CONSULTANTS, CONSTRUCTION MANAGERS
 BUILDING A BETTER WORLD
 1516 S. Broadway, Little Rock, AR 72202 • Phone: (501) 371-1790 • FAX: (501) 371-1277

**FORREST CITY
 NEW CITY HALL**
 FORREST CITY, AR

LEGEND

-  GYPSUM BOARD - LIGHT TEXTURE FIN. - PAINT
-  2x6 T&G SOLID WOOD DECKING WITH FACTORY APPLIED STAIN
-  ACT CEILING SYSTEM - 'ARMSTRONG' BRIGHTON SERIES OR EQUAL



1/8" = 1'-0"

ISSUE / DATE	DESCRIPTION

DATE	DESCRIPTION

PROJECT NO.	163902CFC
PROJECT PHASE	CONSTRUCTION DOCUMENTS
DRAWN BY:	OLA
CHECKED BY:	OLA

RCP
 NOVEMBER 8, 2016

A1.2