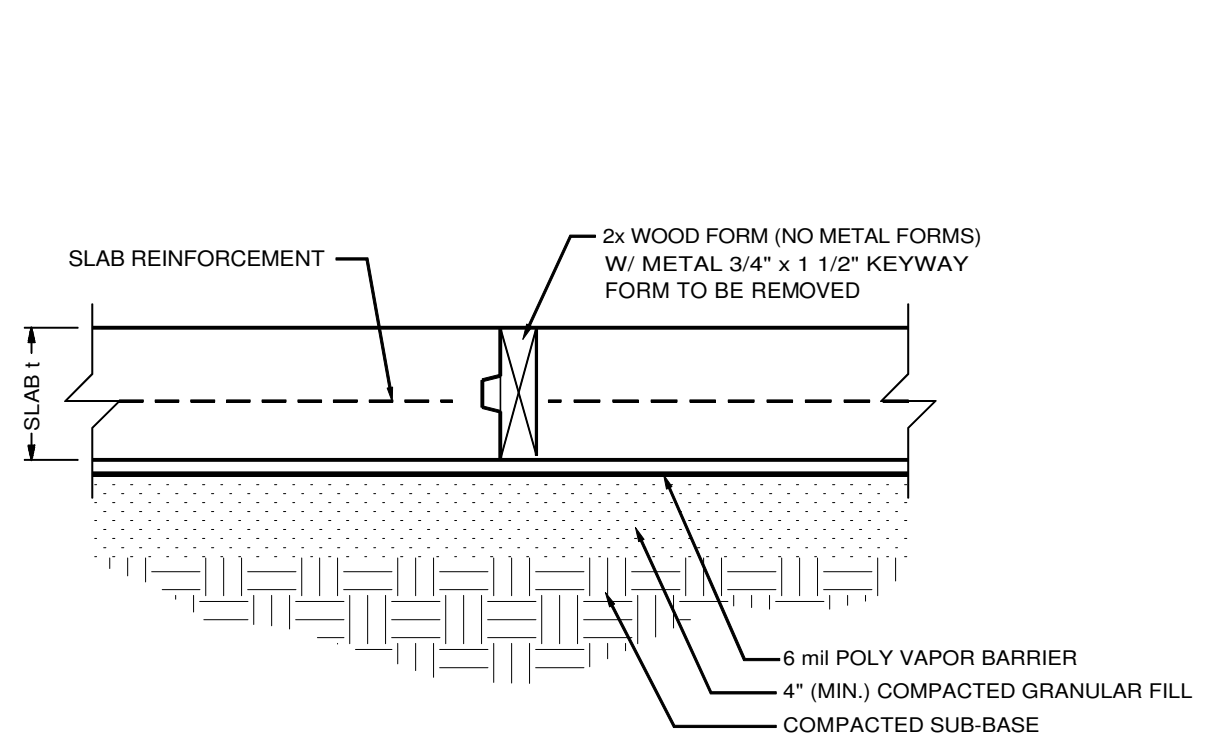
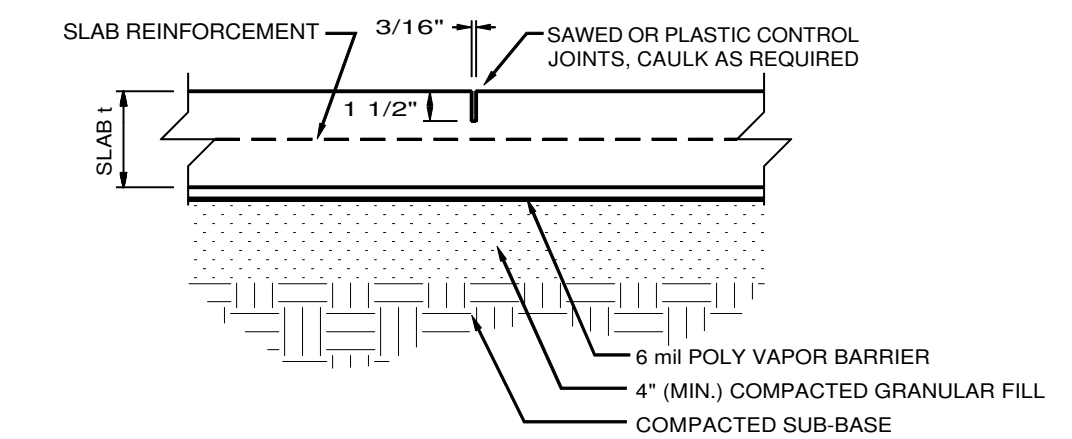


FOUNDATION PLAN

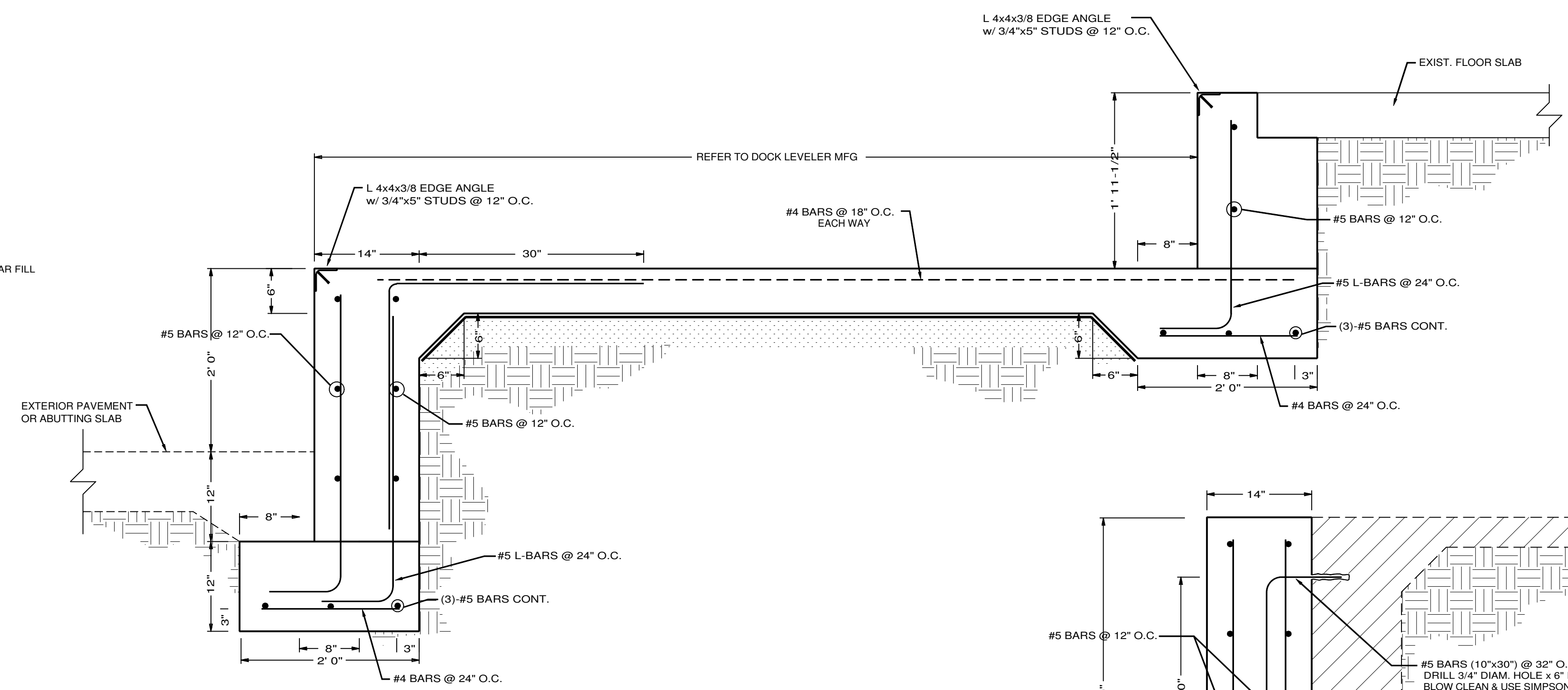
SCALE 1/8"=1'



1 SLAB CONSTRUCTION JOINT DETAIL

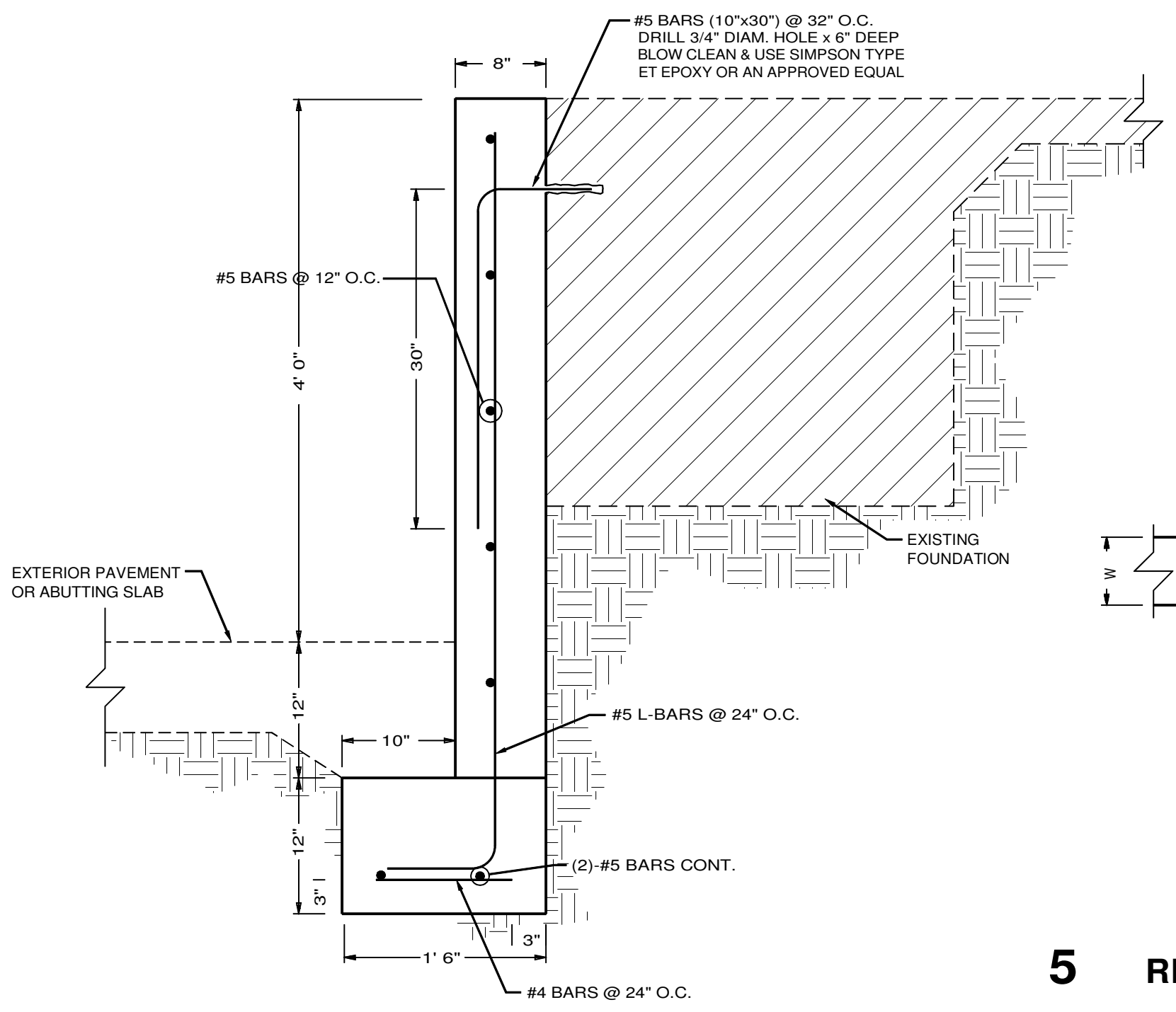


2 SLAB CONTROL JOINT DETAIL



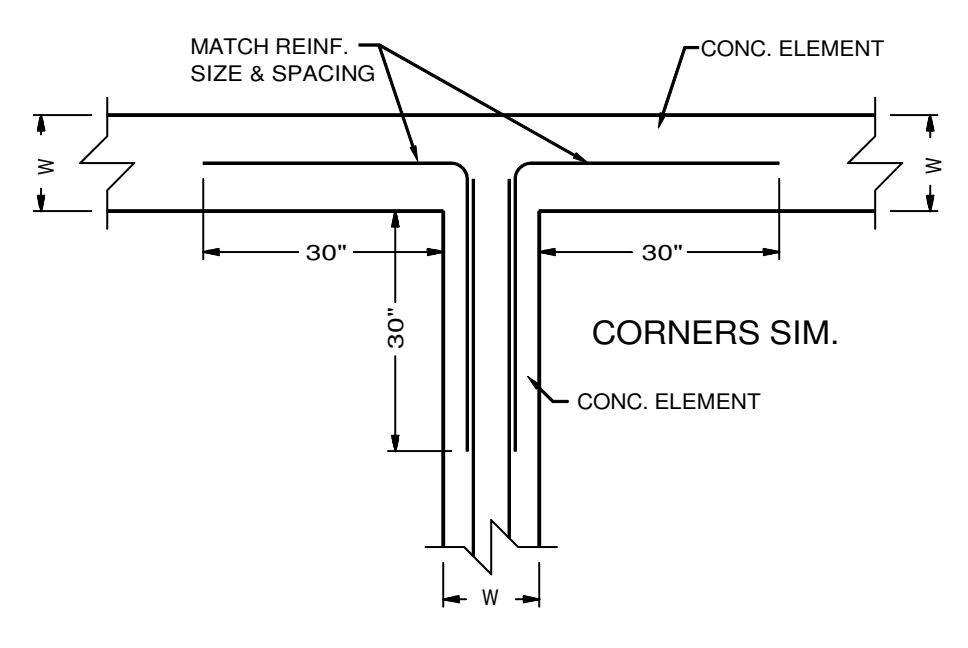
3 DOCK LEVELER FOUNDATION SECTION

SCALE 1"=1'



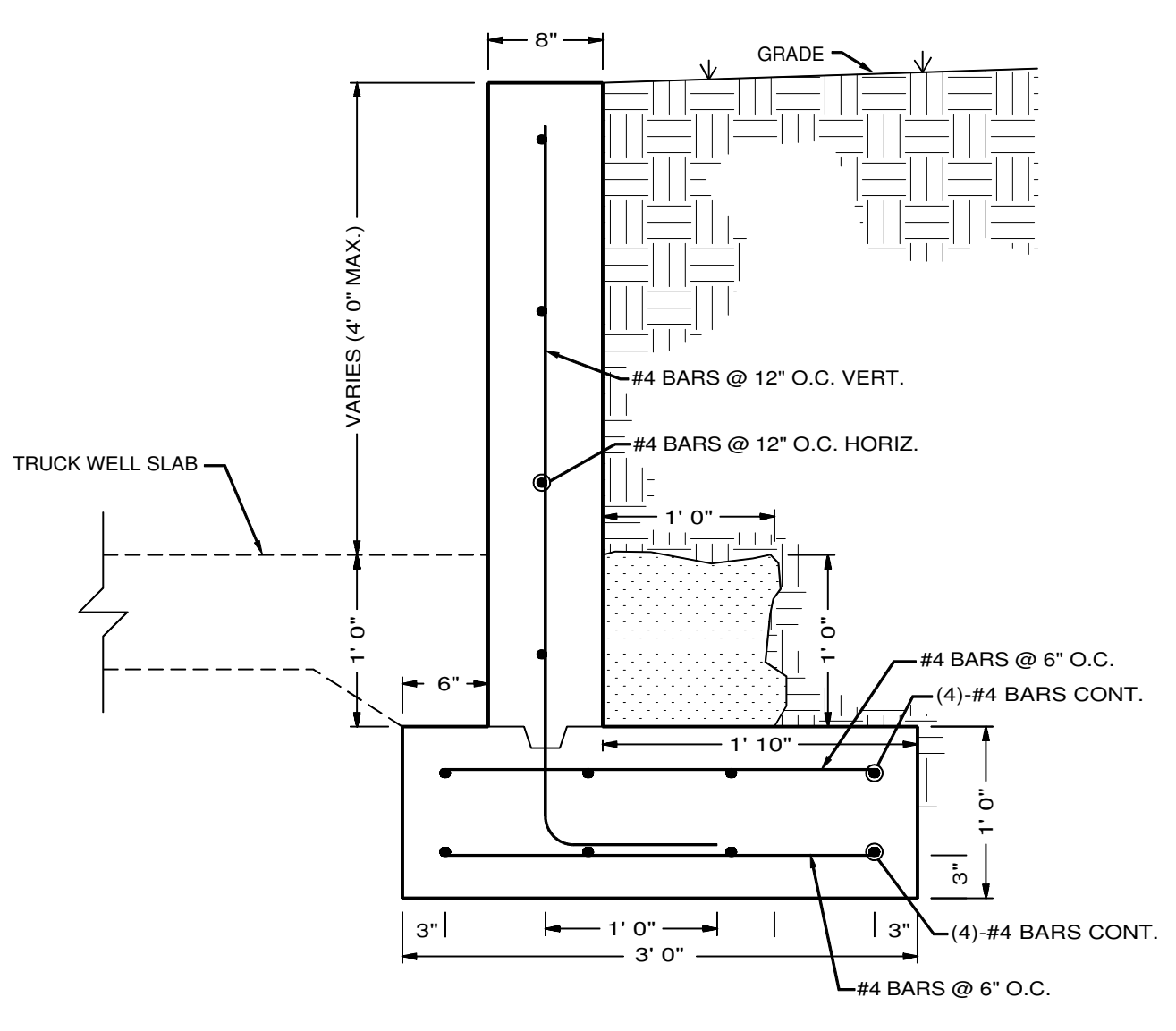
4 TRUCK WELL STRIP FOOTING @ EXIST. SPREAD FOOTING

SCALE 1"=1'



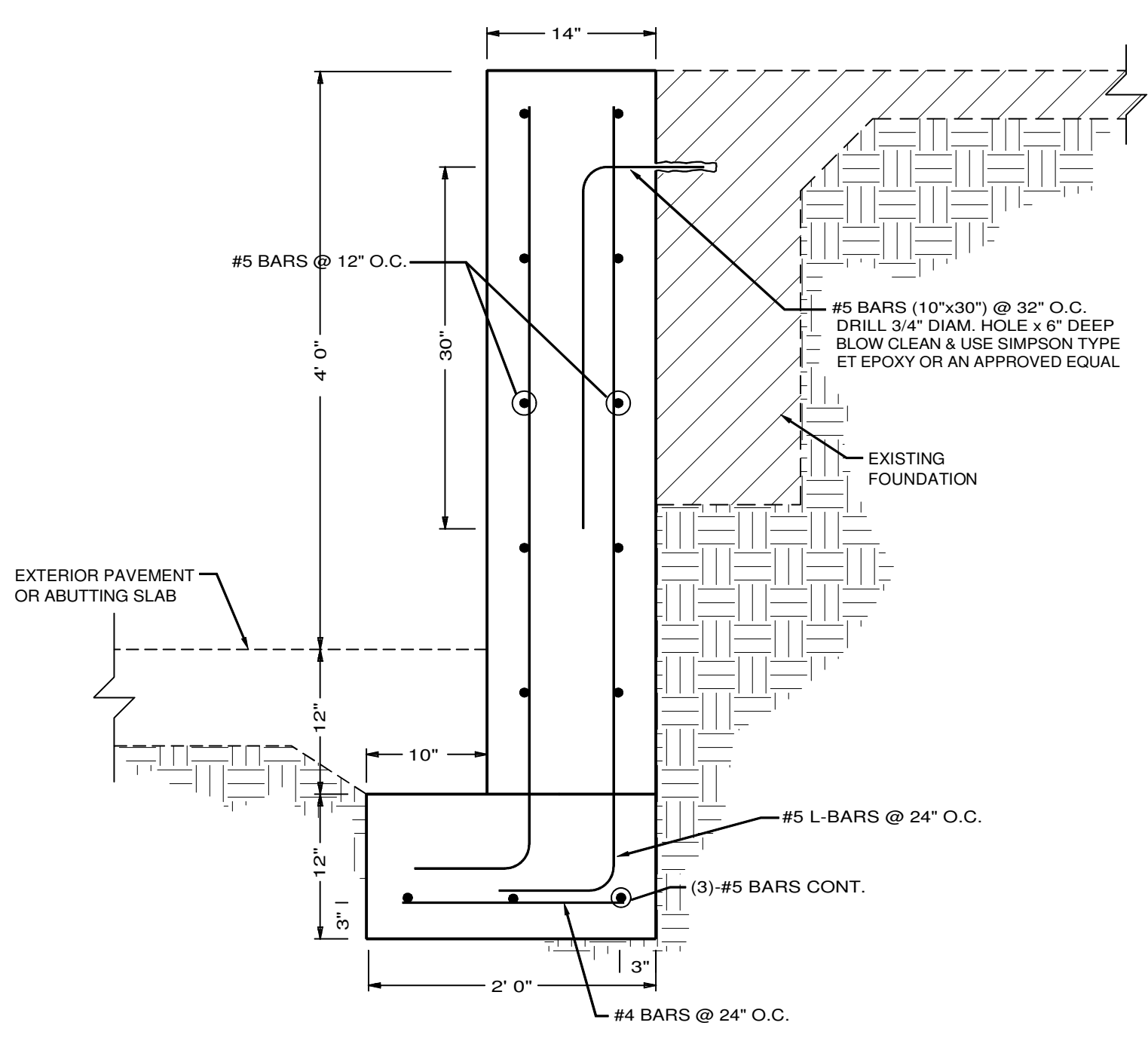
5 REINFORCEMENT INTERSECTION

SCALE 1/2"=1'



6 TRUCK WELL RETAINING WALL

SCALE 1"=1'



7 TRUCK WELL STRIP FOOTING

SCALE 1"=1'

SMITH ENGINEERING CO.
 CIVIL & STRUCTURAL
 P.O. BOX 299 • MARION, AR 72364 • (870) 739-5533

STUCK ASSOCIATES
 ARCHITECTURE
 INTERIOR DESIGN
 FEASIBILITY STUDIES
 BIM/FACILITY MANAGEMENT
 1208 SOUTH MAIN
 LITTLE ROCK, AR 72202
 JOHNSBORO, AR 72041
 (501) 656-9999
 WWW.STUCKARCH.COM

CORRUGATED SUPPLIES CO.
RENOVATIONS TO EXISTING FACILITY
 HARRISBURG, ARKANSAS

STATE OF ARKANSAS
 REGISTERED PROFESSIONAL ENGINEER
 No. 12043
 D. SWAN
 9/9/17

Submission Date
 Submitted
 CONSTRUCTION DOCUMENTS
 9-09-2017

REVISIONS

Sheet Number
S200
 Project Number