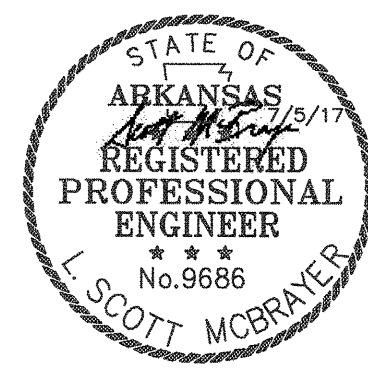
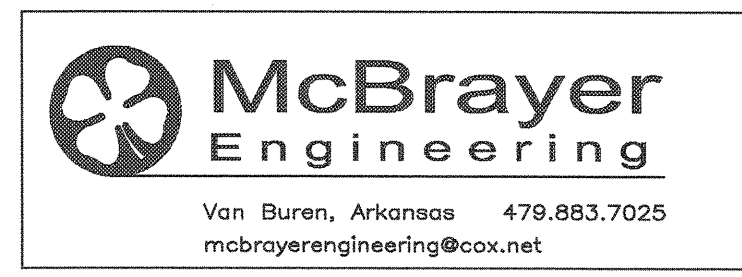


Revision	By	Date



Drawn By: LSM	Vertical Scale: -
Approved By: LSM	Horizontal Scale: 1"=30'
Date: 4.30.17	Plotting Scale: 1
Project No.: 1401-001	Drawing Name: RIVERCREST ST.

RIVERCREST PROPOSED STADIUM
Mississippi County, Arkansas

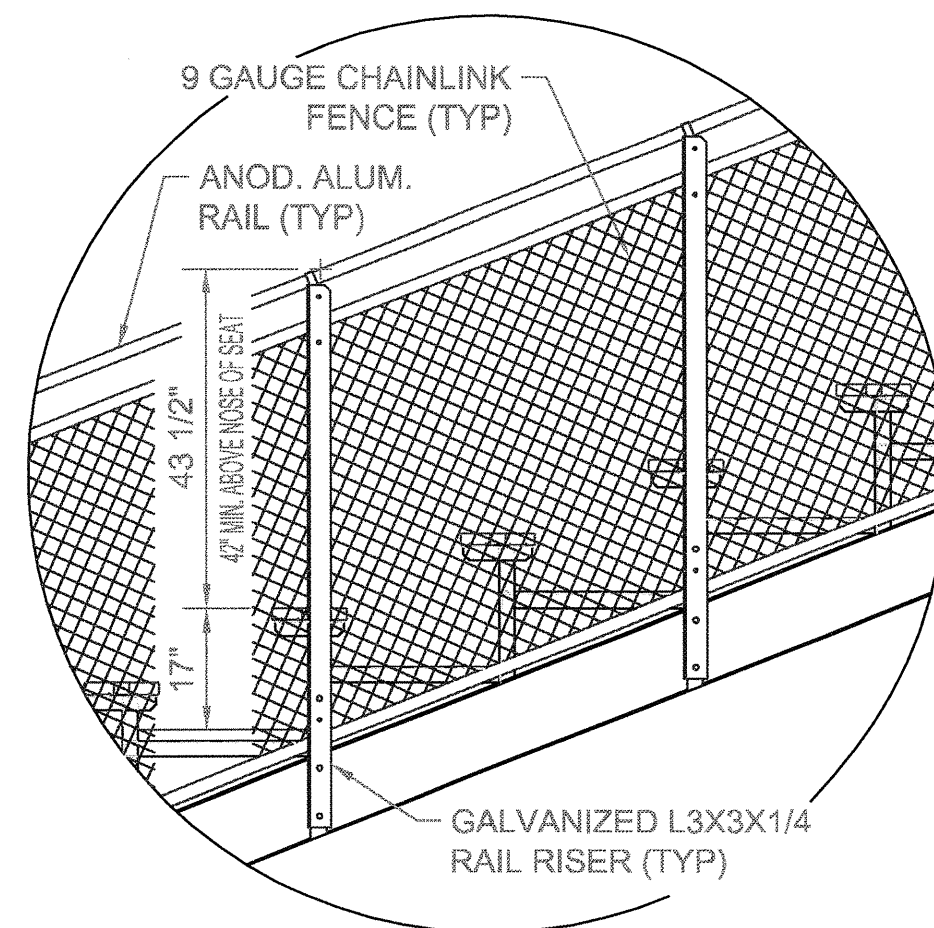
ELECTRICAL DETAILS
Issued for Bidding

Sheet No.:
11
17
of

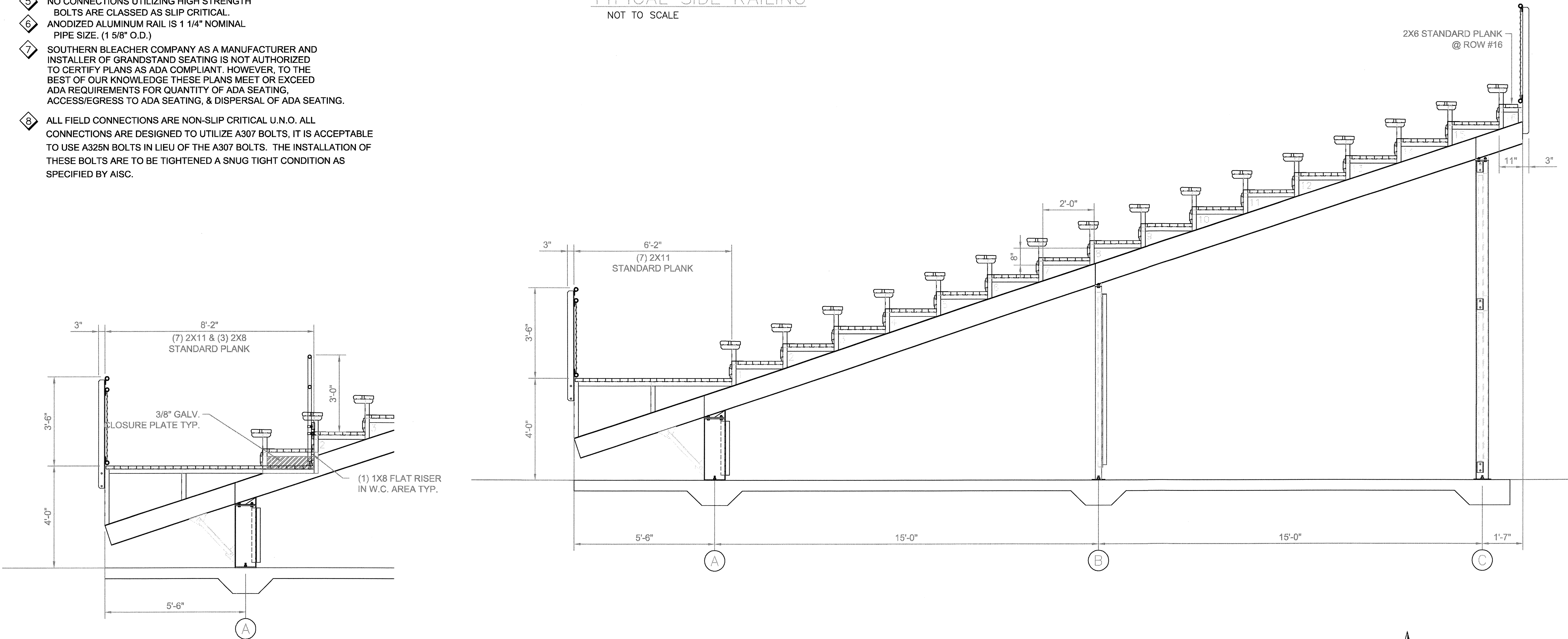
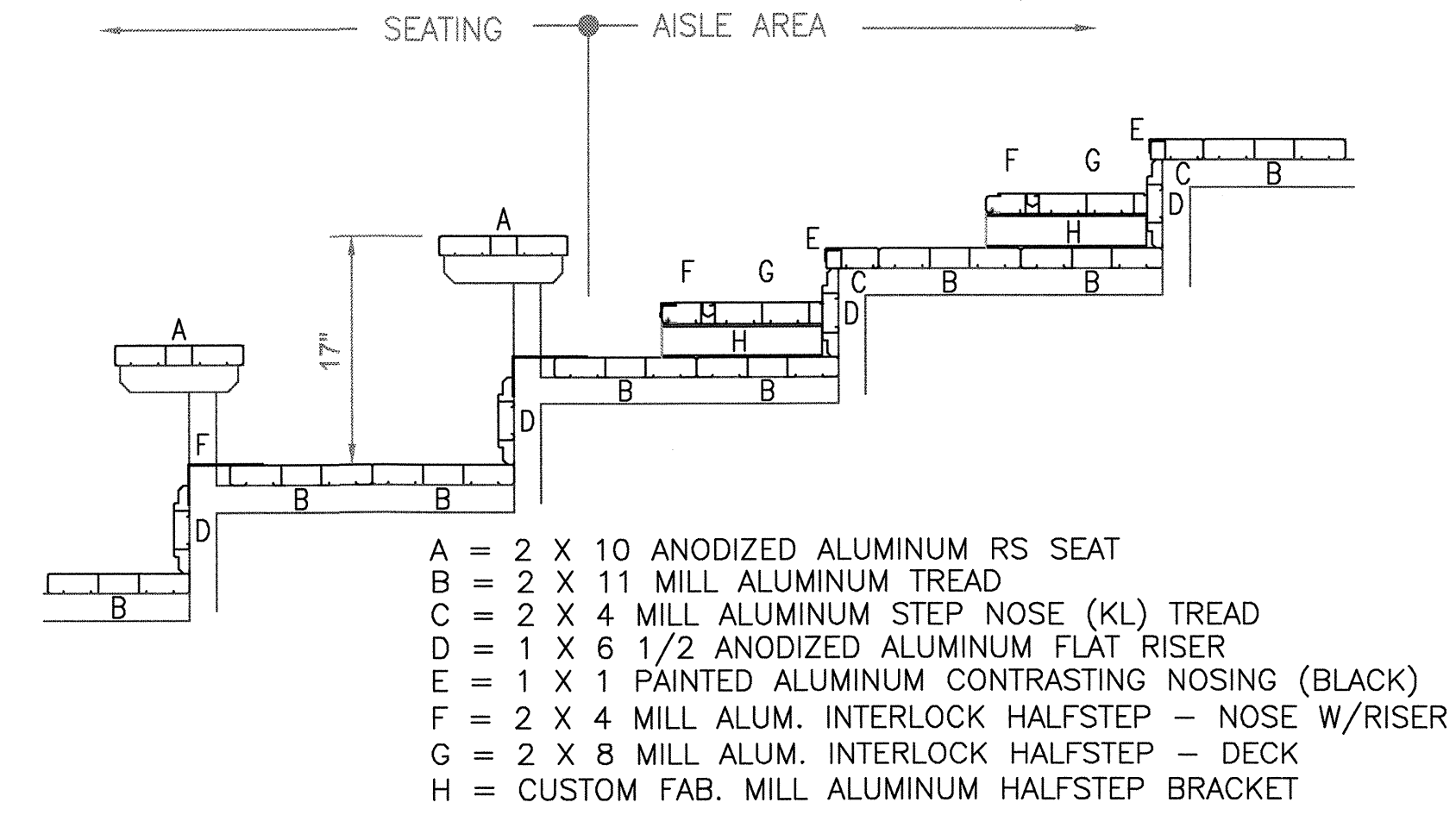
DESIGN LOADING
 TREAD & SEAT AREA 100psf UNIFORM LIVE LOAD.
 SEAT (VERTICAL) 120 lbs/ft.
 SEAT (HORIZONTAL SWAY) 24lbs/ft PARALLEL AND 10lbs/ft PERPENDICULAR TO SEAT.
 TREAD - STAIR AND AISLE TREADS - MINIMUM CONCENTRATED LOAD OF 300LBS ON AN AREA OF 4 SQUARE INCHES
 HANDRAIL & GUARDRAIL 50 lbs/ft IN ANY DIRECTION AT THE TOP.
 HANDRAIL & GUARDRAIL 200 lbs CONCENTRATED IN ANY DIRECTION.
 GUARDS, INFILL COMPONENTS - 50LBS PER SQFT IN HORIZONTAL DIRECTION
 SNOW LOADS AS PER STATE ADOPTED CODE
 WIND LOADS AS PER STATE ADOPTED CODE
 SEISMIC LOADS AS PER STATE ADOPTED CODE

NOTES

- 1 ALL STRUCTURAL AND MISCELLANEOUS STEEL SHALL CONFORM TO THE FOLLOWING A.I.S.C. STANDARDS
 PLATE UP TO 1/2" THICK = A36
 PLATE U.N.O. = A572 GRADE 50
 ANGLE = A36/A36M GRADE 50
 WIDE FLANGE = A992 Fy=50 ksi
 CHANNEL = A36/A36M GRADE 50
 ROD = A36/A529 GRADE 50
 TUBE = A500 GRADE "B" 46 ksi
- 2 WELDS ARE ALL AROUND WITH TYPE ER70S-6 WIRE MIG.
- 3 ALL STEEL TO BE HOT DIPPED GALVANIZED TO A.S.T.M. A-123-89 ae1.
- 4 STRUCTURAL BOLTS ARE HOT DIPPED GALV. AND ARE EQUAL TO OR GREATER THAN A-307.
- 5 NO CONNECTIONS UTILIZING HIGH STRENGTH BOLTS ARE CLASSED AS SLIP CRITICAL.
- 6 ANODIZED ALUMINUM RAIL IS 1 1/4" NOMINAL PIPE SIZE. (1 5/8" O.D.)
- 7 SOUTHERN BLEACHER COMPANY AS A MANUFACTURER AND INSTALLER OF GRANDSTAND SEATING IS NOT AUTHORIZED TO CERTIFY PLANS AS ADA COMPLIANT. HOWEVER, TO THE BEST OF OUR KNOWLEDGE THESE PLANS MEET OR EXCEED ADA REQUIREMENTS FOR QUANTITY OF ADA SEATING, ACCESS/EGRESS TO ADA SEATING, & DISPERSAL OF ADA SEATING.
- 8 ALL FIELD CONNECTIONS ARE NON-SLIP CRITICAL U.N.O. ALL CONNECTIONS ARE DESIGNED TO UTILIZE A307 BOLTS, IT IS ACCEPTABLE TO USE A325N BOLTS IN LIEU OF THE A307 BOLTS. THE INSTALLATION OF THESE BOLTS ARE TO BE TIGHTENED A SNUG TIGHT CONDITION AS SPECIFIED BY AISC.



TYPICAL SIDE RAILING
 NOT TO SCALE



SIDE VIEW @ W.C. AREA
 SCALE: 1/2" = 1'-0"

SIDE VIEW - HOME
 SCALE: 1/2" = 1'-0"

NOT FOR CONSTRUCTION
 Southern BLEACHER COMPANY
 GRANDSTANDS • BLEACHERS • STADIUMS
 PO Box One, Grohman, Texas 76451
 801 Fifth Street,
 Rivercrest H.S. Football Stadium
 Wilson, Arkansas
 Phone: 940/549-6883 940/549-1366
 Established 1946

DATE	DESCRIPTION	BY	CHECKED
02/20/17	LA	ON	ON
JOB NUMBER 17sd054			
SHEET 12		OF 17	

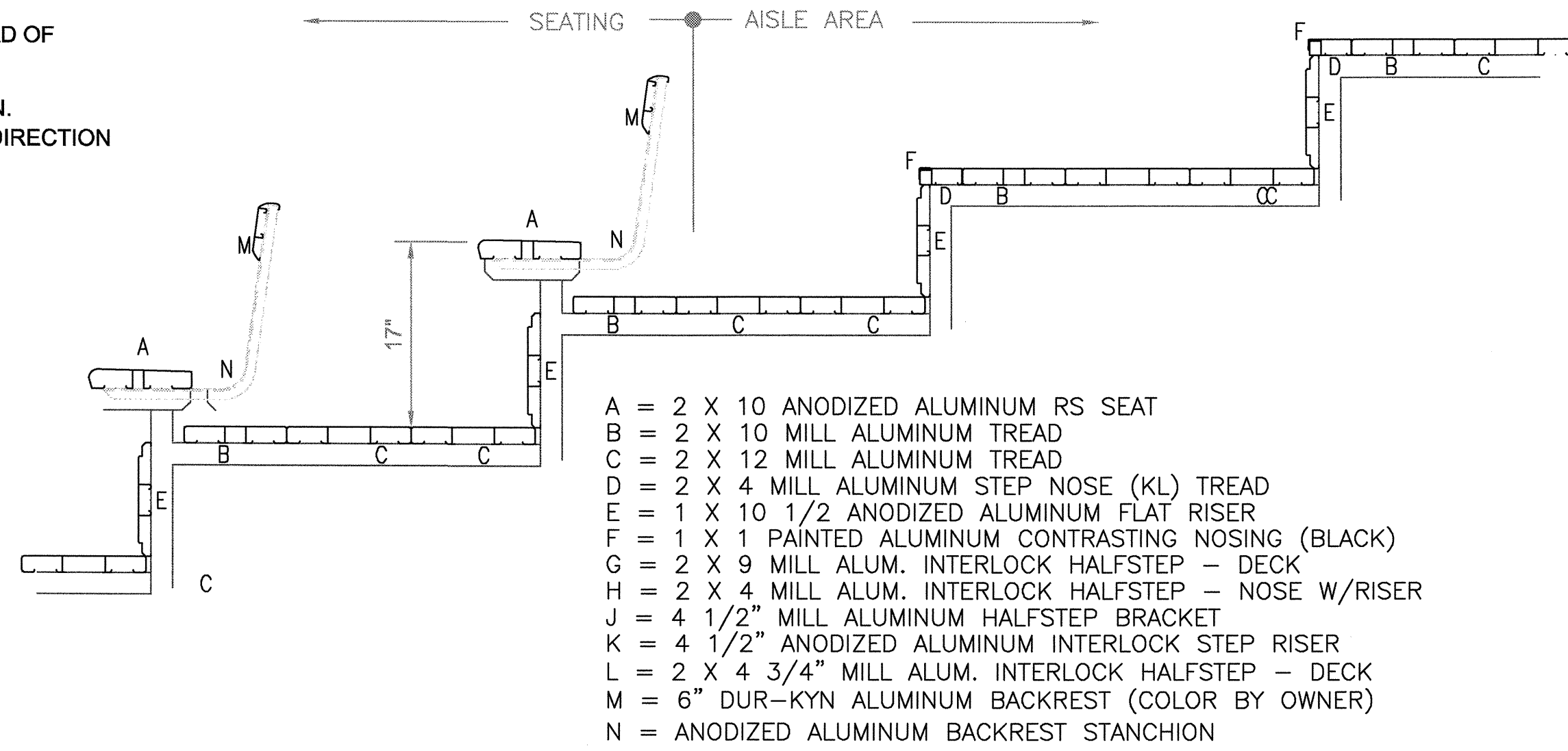
22" X 34" (11x17 = 1/2 indicated scale)

DESIGN LOADING
 TREAD & SEAT AREA 100psf UNIFORM LIVE LOAD.
 SEAT (VERTICAL) 120 lbs/ft.
 SEAT (HORIZONTAL SWAY) 24lbs/ft PARALLEL AND
 10lbs/ft PERPENDICULAR TO SEAT.

TREAD - STAIR AND AISLE TREADS - MINIMUM CONCENTRATED LOAD OF
 300LBS ON AN AREA OF 4 SQUARE INCHES
 HANDRAIL & GUARDRAIL 50 lbs/ft IN ANY DIRECTION AT THE TOP.
 HANDRAIL & GUARDRAIL 200 lbs CONCENTRATED IN ANY DIRECTION.
 GUARDS, INFILL COMPONENTS - 50LBS PER SQFT IN HORIZONTAL DIRECTION
 SNOW LOADS AS PER STATE ADOPTED CODE
 WIND LOADS AS PER STATE ADOPTED CODE
 SEISMIC LOADS AS PER STATE ADOPTED CODE

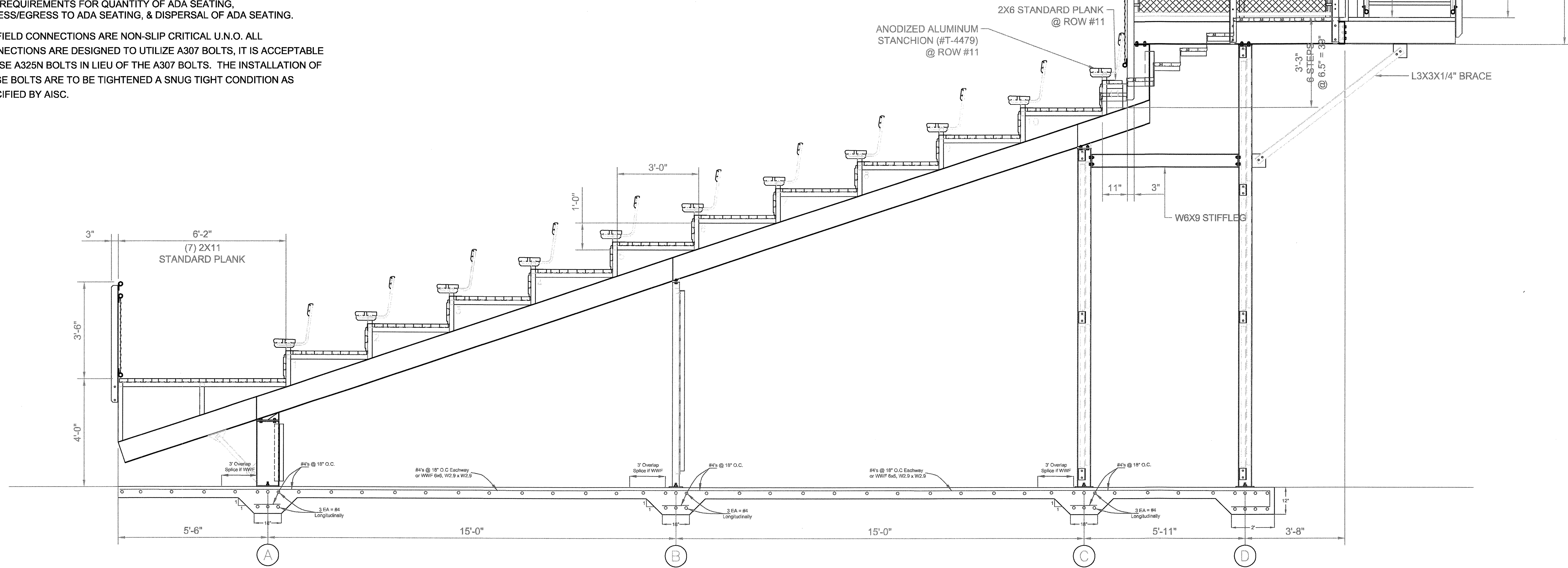
NOTES

- 1 ALL STRUCTURAL AND MISCELLANEOUS STEEL SHALL CONFORM TO THE FOLLOWING A.I.S.C. STANDARDS
 PLATE UP TO 1/2" THICK = A36
 PLATE U.N.O. = A572 GRADE 50
 ANGLE = A36/A36M GRADE 50
 WIDE FLANGE = A992 Fy=50 ksi
 CHANNEL = A36/A36M GRADE 50
 ROD = A36/A529 GRADE 50
 TUBE = A500 GRADE "B" 46 ksi
- 2 WELDS ARE ALL AROUND WITH TYPE ER70S-6 WIRE MIG.
- 3 ALL STEEL TO BE HOT DIPPED GALVANIZED TO A.S.T.M. A-123-89 ae1.
- 4 STRUCTURAL BOLTS ARE HOT DIPPED GALV. AND ARE EQUAL TO OR GREATER THAN A-307.
- 5 NO CONNECTIONS UTILIZING HIGH STRENGTH BOLTS ARE CLASSED AS SLIP CRITICAL.
- 6 ANODIZED ALUMINUM RAIL IS 1 1/4" NOMINAL PIPE SIZE. (1 5/8" O.D.)
- 7 SOUTHERN BLEACHER COMPANY AS A MANUFACTURER AND INSTALLER OF GRANDSTAND SEATING IS NOT AUTHORIZED TO CERTIFY PLANS AS ADA COMPLIANT. HOWEVER, TO THE BEST OF OUR KNOWLEDGE THESE PLANS MEET OR EXCEED ADA REQUIREMENTS FOR QUANTITY OF ADA SEATING, ACCESS/EGRESS TO ADA SEATING, & DISPERSAL OF ADA SEATING.
- 8 ALL FIELD CONNECTIONS ARE NON-SLIP CRITICAL U.N.O. ALL CONNECTIONS ARE DESIGNED TO UTILIZE A307 BOLTS, IT IS ACCEPTABLE TO USE A325N BOLTS IN LIEU OF THE A307 BOLTS. THE INSTALLATION OF THESE BOLTS ARE TO BE TIGHTENED A SNUG TIGHT CONDITION AS SPECIFIED BY AISC.



PLANK ARRANGEMENT

NOT TO SCALE 12" X 36"



SIDE VIEW - HOME @ PRESSBOX
 SCALE: 1/2" = 1'-0"

110 DETAIL NUMBER SHEET SHOWN ON SHEET CUT FROM
 NOT FOR CONSTRUCTION
 Southern BLEACHER COMPANY
 PO Box One, Graham, Texas 76450
 801 Fifth Street
 Phone: 940/549-6883 940/549-1368
 FAX: 940/549-6883
 ESTABLISHED 1946
 GRANDSTANDS • BLEACHERS • STADIUMS

Side View - Home @ Pressbox
 12" Rise X 36" Tread
 Rivercrest Public Schools
 Rivercrest H.S. Football Stadium
 Wilson, Arkansas

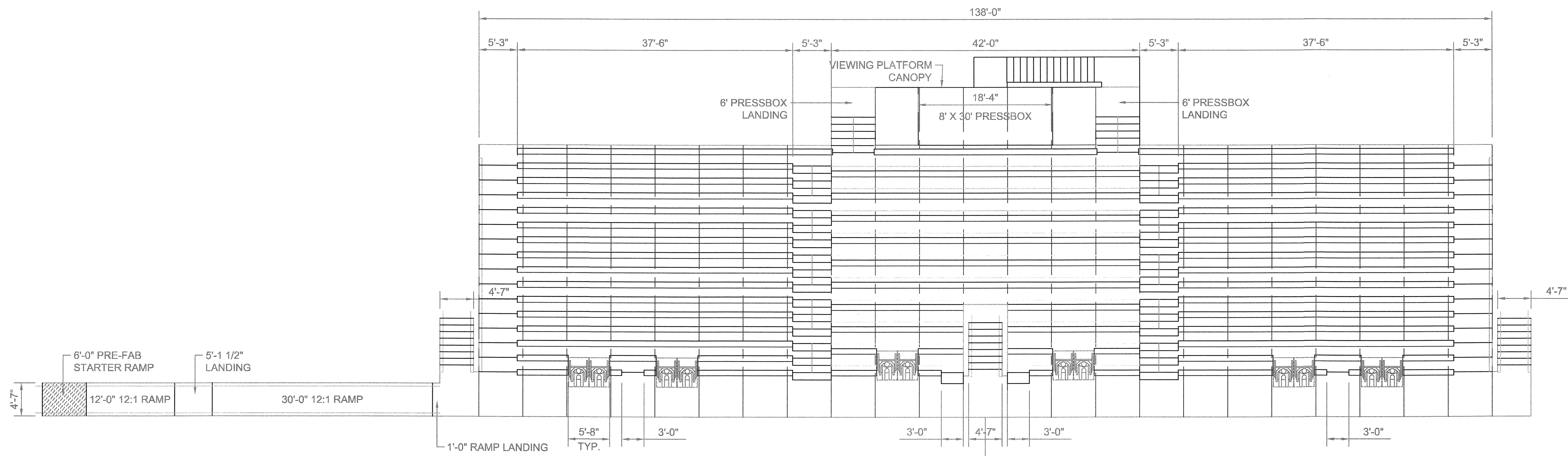
REV	DATE	DESCRIPTION	BY	CHECKED

JOB NUMBER: 17sd054
 SHEET: 13 OF 17

FRONTIER ENGINEERING, INC.
 CIVIL ENGINEERS • CONSULTANTS
 P.O. Box 11988 • FORT SMITH, AR 72917

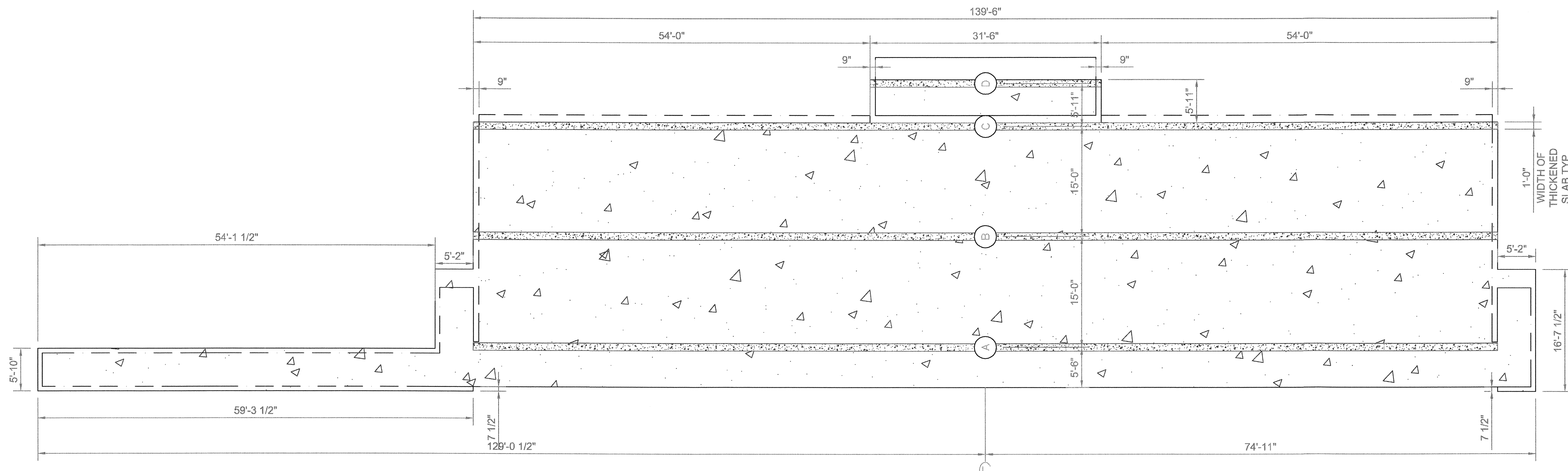
Athletic Surfaces Plus

22" X 34" (11x17 = 1/2 indicated scale)



SEATING LAYOUT
 SCALE: 1/8" = 1'-0"

758 TOTAL NET 18" SEATS
 272 TOTAL NET 18" SEATS W/ BACKRESTS
 12 TOTAL NET 33" WHEELCHAIR SPACES
 1042 TOTAL SEATING CAPACITY



CONCRETE LAYOUT
 SCALE: 1/8" = 1'-0"

Athletic Surfaces Plus

FRONTIER ENGINEERING, INC.
 CIVIL ENGINEERS • CONSULTANTS
 P.O. Box 11988 • FORT SMITH, AR 72917

NOT FOR CONSTRUCTION

DETAIL NUMBER 1-19 SHEET SHOWN ON 3-19 SHEET CUT FROM

PO Box One, Graham, Texas 76451
 801 Fifth Street
 Phone: 940/549-6083 940/549-1368
 FAX: 940/549-6083

Southern
 BLEACHER COMPANY
 GRANDSTANDS • BLEACHERS • STADIUMS

ESTABLISHED 1946

THIS DRAWING AND ALL INFORMATION THEREIN IS THE PROPERTY OF THE SOUTHERN BLEACHER COMPANY. IT IS TO BE USED ONLY FOR THE PROJECT AND SITE SPECIFICALLY IDENTIFIED HEREON. THIS DRAWING IS LOANED, SUBJECT TO RETURN UPON DEMAND AND, IS NOT TO BE USED DIRECTLY OR INDIRECTLY IN ANY WAY DETRIMENTAL TO OUR INTERESTS.

Seating Layout & Concrete Layout - Home
 1050 Total Seats

Rivercrest Public Schools
 Rivercrest H.S. Football Stadium
 Wilson, Arkansas

REV	BY	DATE	DESCRIPTION
1		02/20/17	LA
2			
3			
4			
5			
6			
7			
8			
9			
10			

JOB NUMBER 17sd054

SHEET 14 OF 17

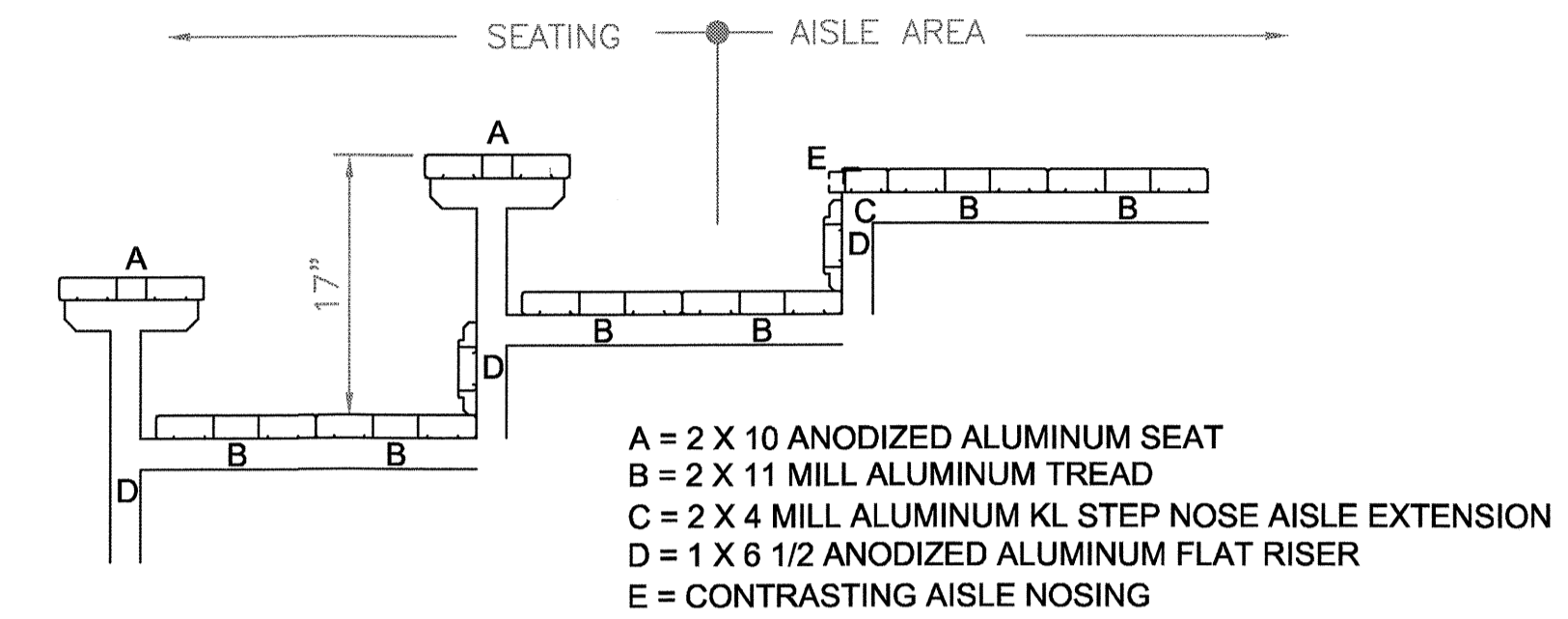
22" X 34" (11x17 = 1/2 indicated scale)

DESIGN LOADING

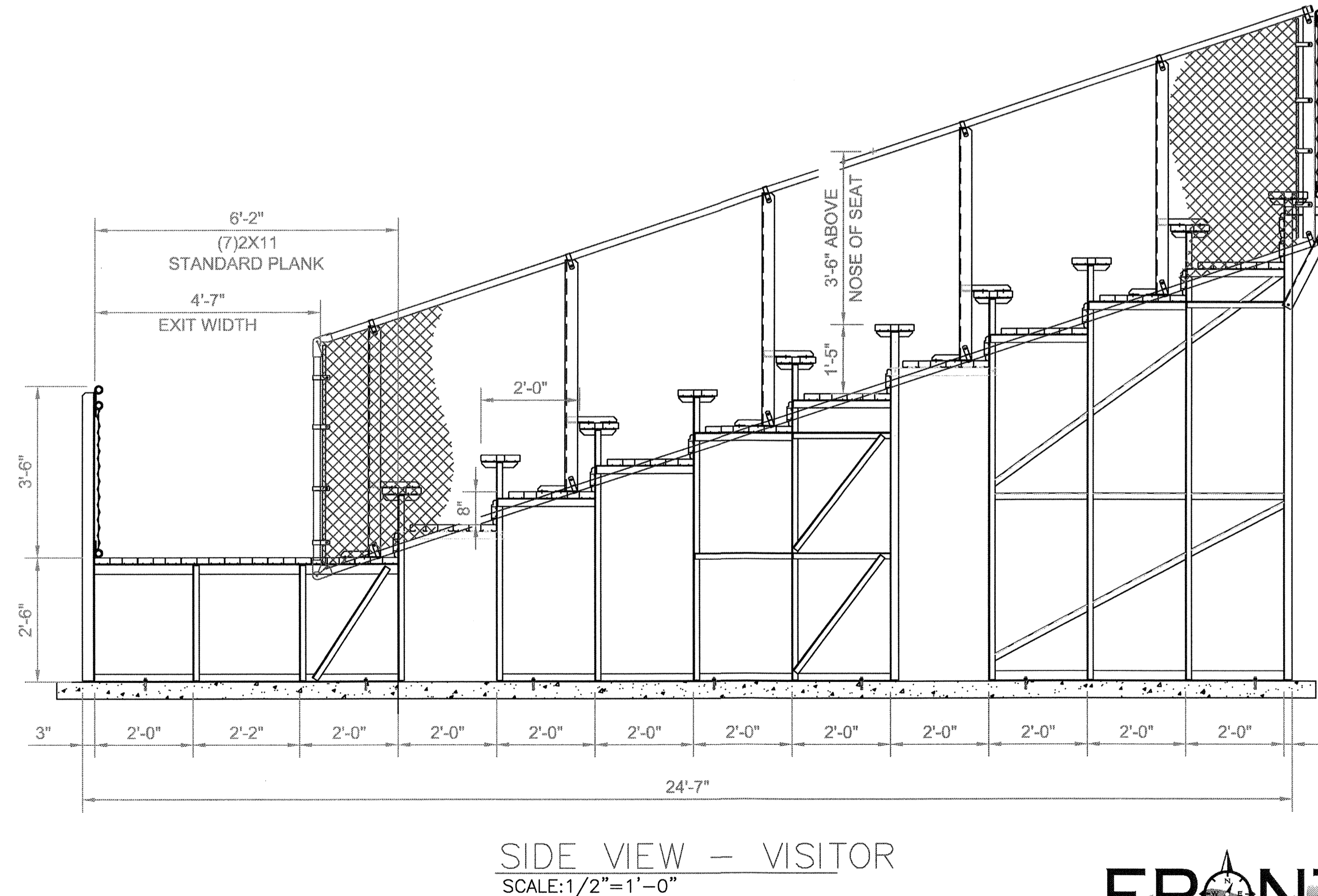
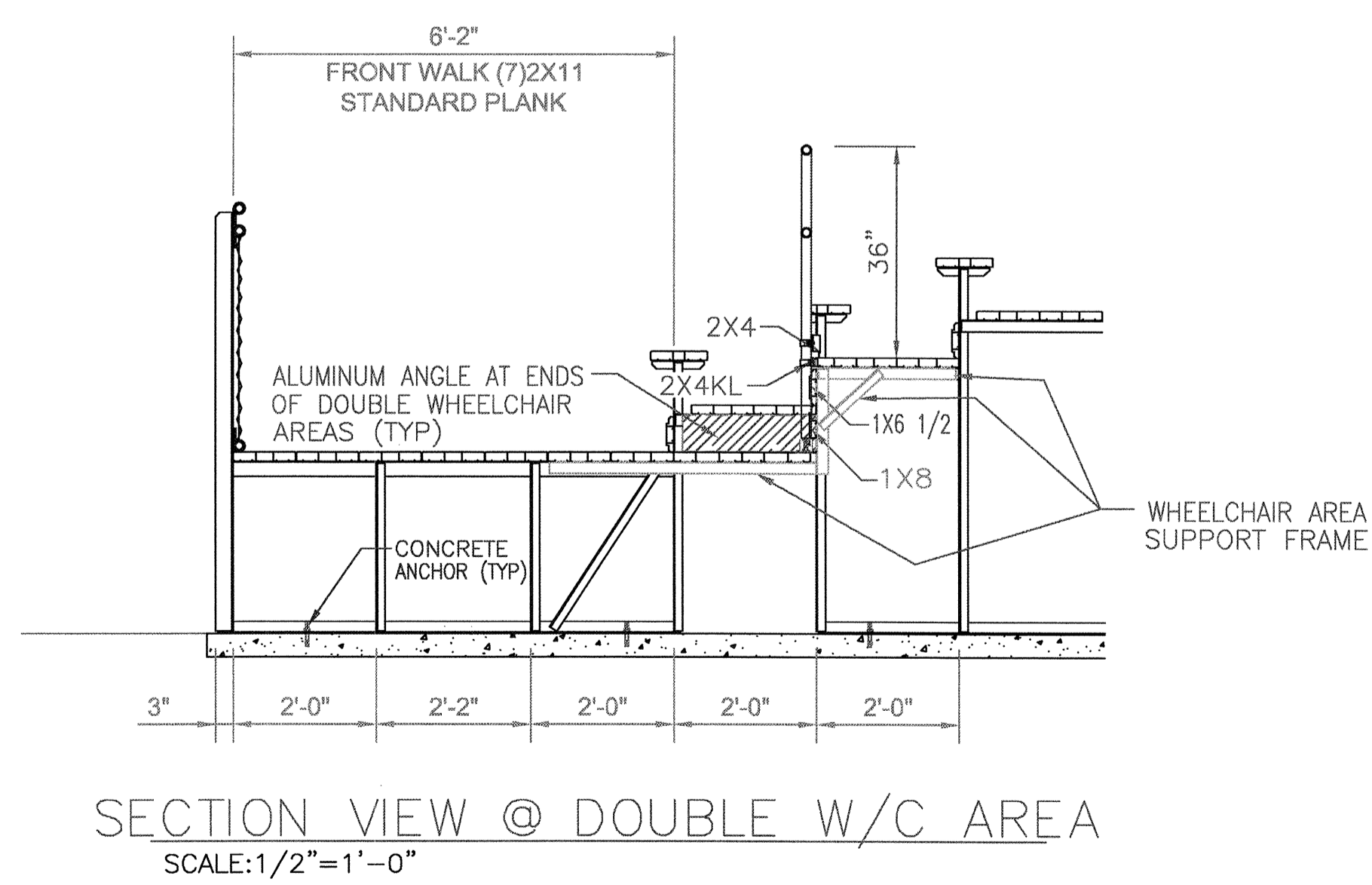
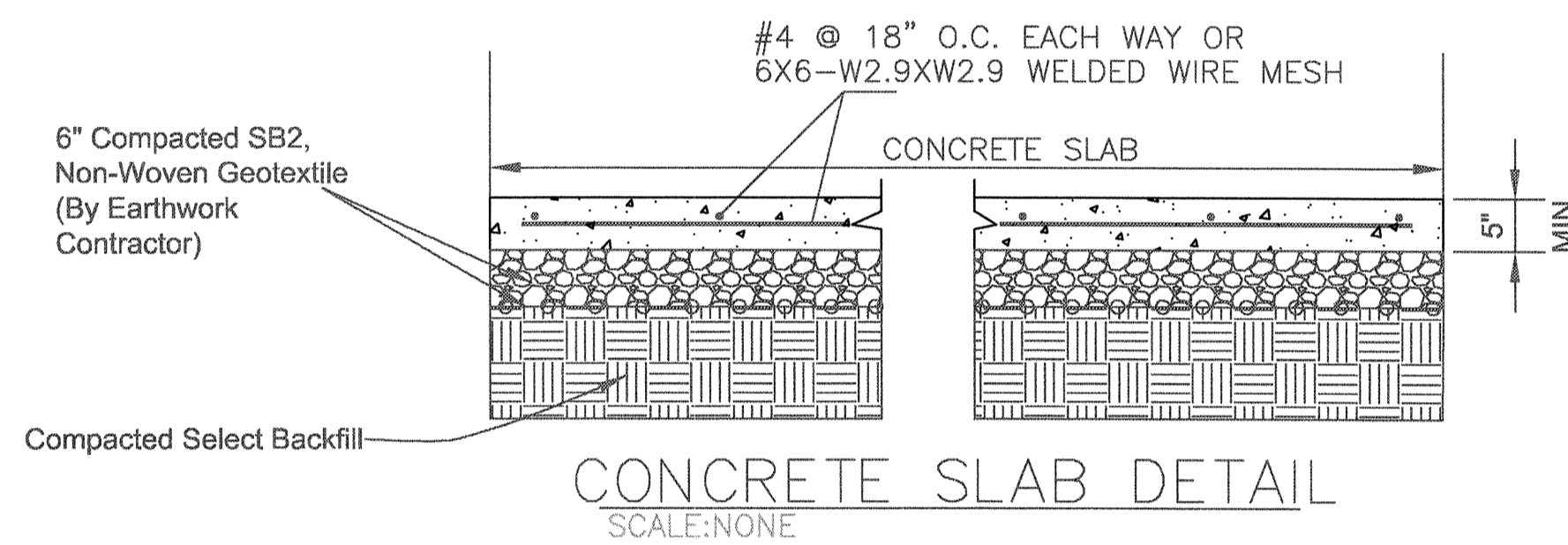
TREAD & SEAT AREA (GROSS AREA) 100psf.
 SEAT (PERPENDICULAR SWAY) 10 lbs/lf.
 SEAT (PARALLEL SWAY) 24lbs/lf.
 HANDRAILS (PERPENDICULAR) 50 lbs/lf.
 HANDRAILS (VERTICAL) 100 lbs/lf.
 SEAT & TREAD 120 lbs/lf.

NOTES

1. ANODIZED ALUMINUM RAIL IS 1 1/4" NOMINAL PIPE SIZE.



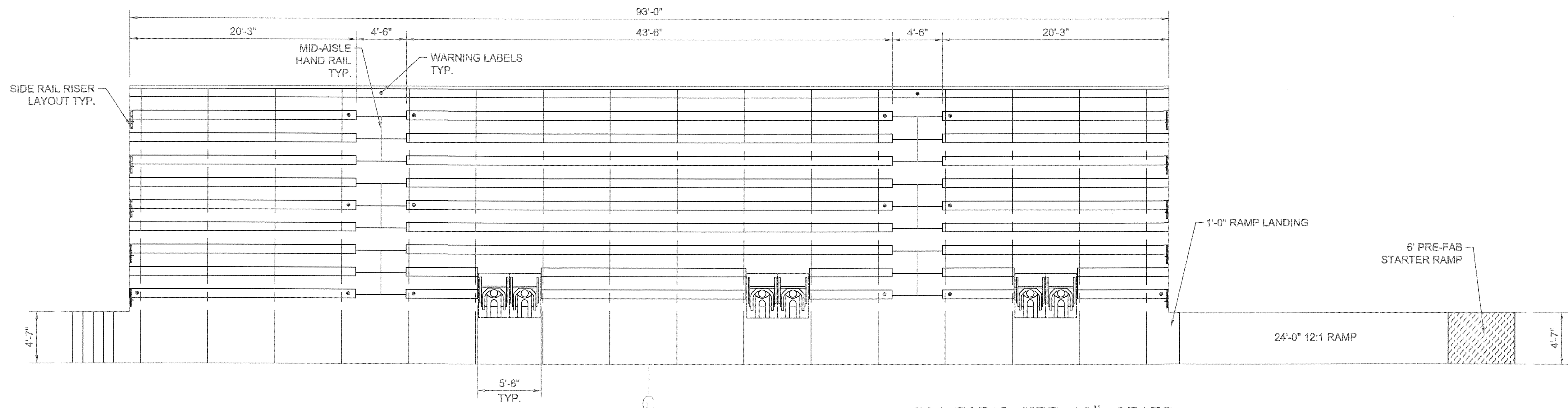
PLANK ARRANGEMENT
 NOT TO SCALE 8" X 24"



NOT FOR CONSTRUCTION
 Southern BLEACHER COMPANY
 GRANDSTANDS • BLEACHERS • STADIUMS
 PO Box One, Cochran, Texas 76450
 801 Fifth Street
 Phone: 940/549-6683 940/549-1366
 FAX: 940/549-6683
 ESTABLISHED 1946

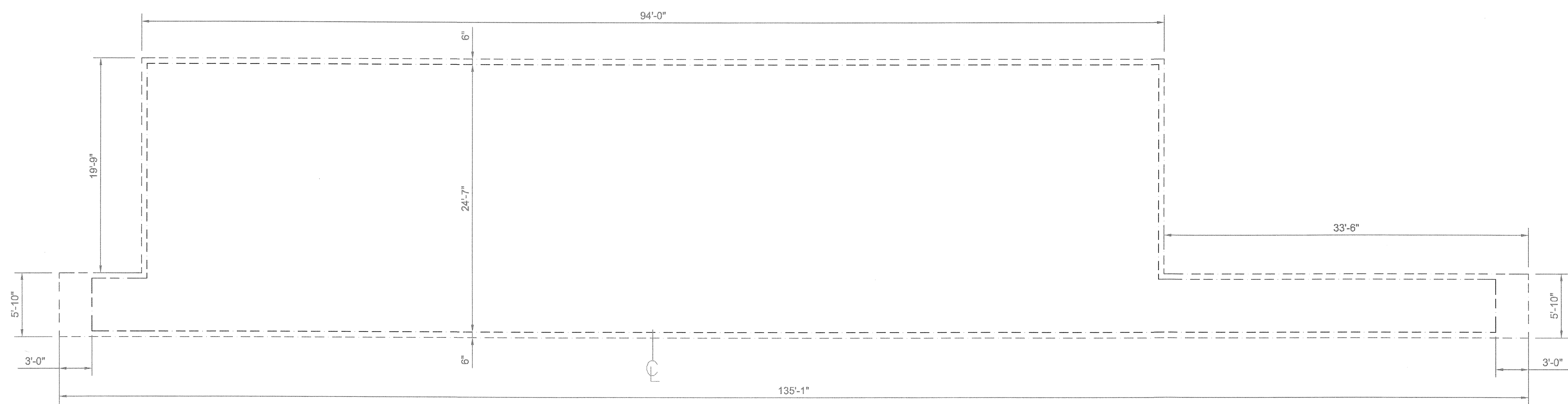
THE Rivercrest Public Schools
 Rivercrest H.S. Football Stadium
 Wilson, Arkansas

REV	DATE	DESCRIPTION	BY	CHECKED
1	02/20/17	Side View - Visitor 8" Rise X 24" Tread	LA	DT
JOB NUMBER: 17sd054 SHEET: 15 OF 17				



SEATING LAYOUT - VISITOR
SCALE: 3/16" = 1'-0"

531 TOTAL NET 18" SEATS
6 TOTAL NET 33" WHEELCHAIR SPACES
537 TOTAL SEATING CAPACITY



CONCRETE LAYOUT - VISITOR
SCALE: 3/16" = 1'-0"

--- = BORDERLINE OF CONCRETE SLAB
- - - = BORDERLINE OF GRANDSTAND

Athletic Surfaces Plus

FRONTIER ENGINEERING, INC.
CIVIL ENGINEERS • CONSULTANTS
P.O. Box 11988 • FORT SMITH, AR 72917

1- DETAILED NUMBER
3-10- SHEET SHOWN ON
THIS DRAWING AND ALL INFORMATION THEREIN IS THE PROPERTY OF THE SOUTHERN BLEACHER COMPANY, P.O. Box One, Graham, Texas 76450, 801 Fifth Street, Telephone: 940/549-6883 940/549-1365 FAX: 940/549-6883. THIS DRAWING IS LOANED SUBJECT TO BE RETURNED UPON DEMAND AND IS NOT TO BE USED DIRECTLY OR INDIRECTLY IN ANY WAY DETRIMENTAL TO OUR INTERESTS. ESTABLISHED 1946

NOT FOR CONSTRUCTION

Southern
BLEACHER COMPANY
GRANDSTANDS • BLEACHERS • STADIUMS

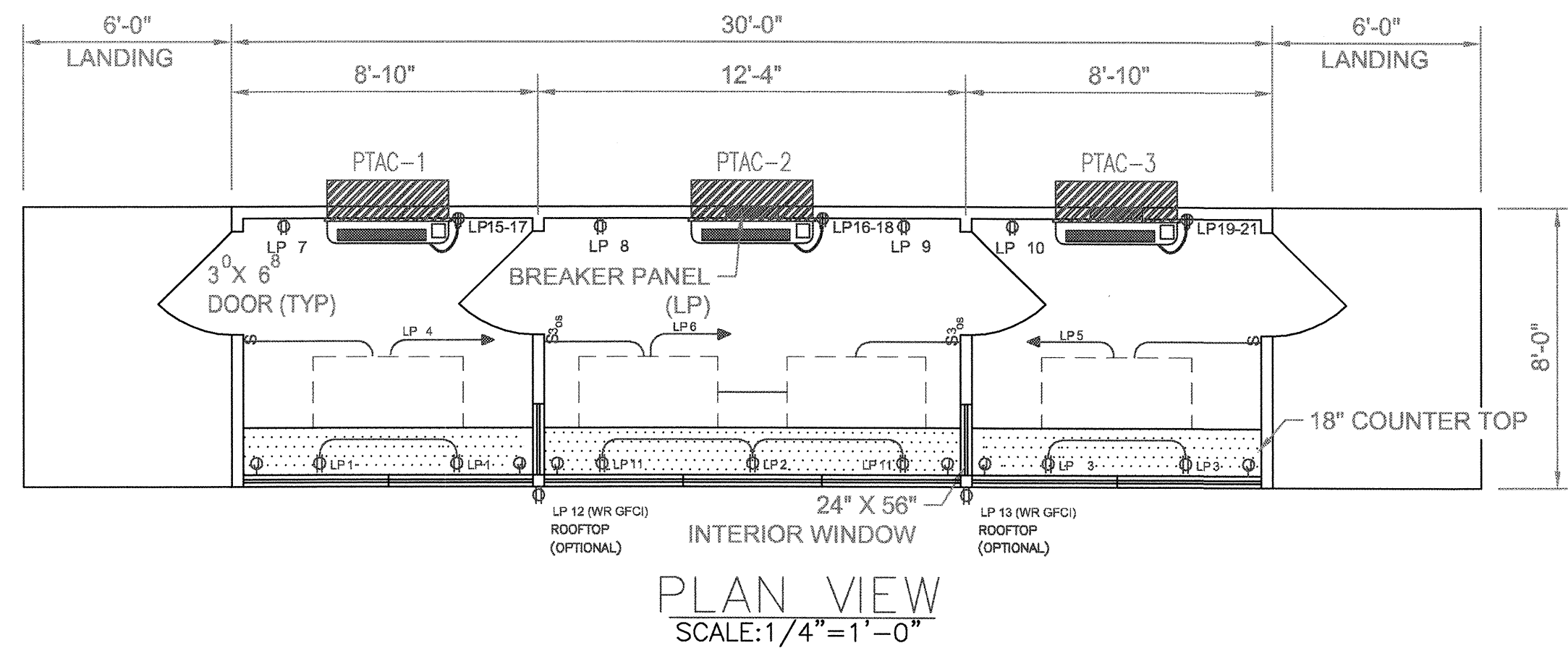
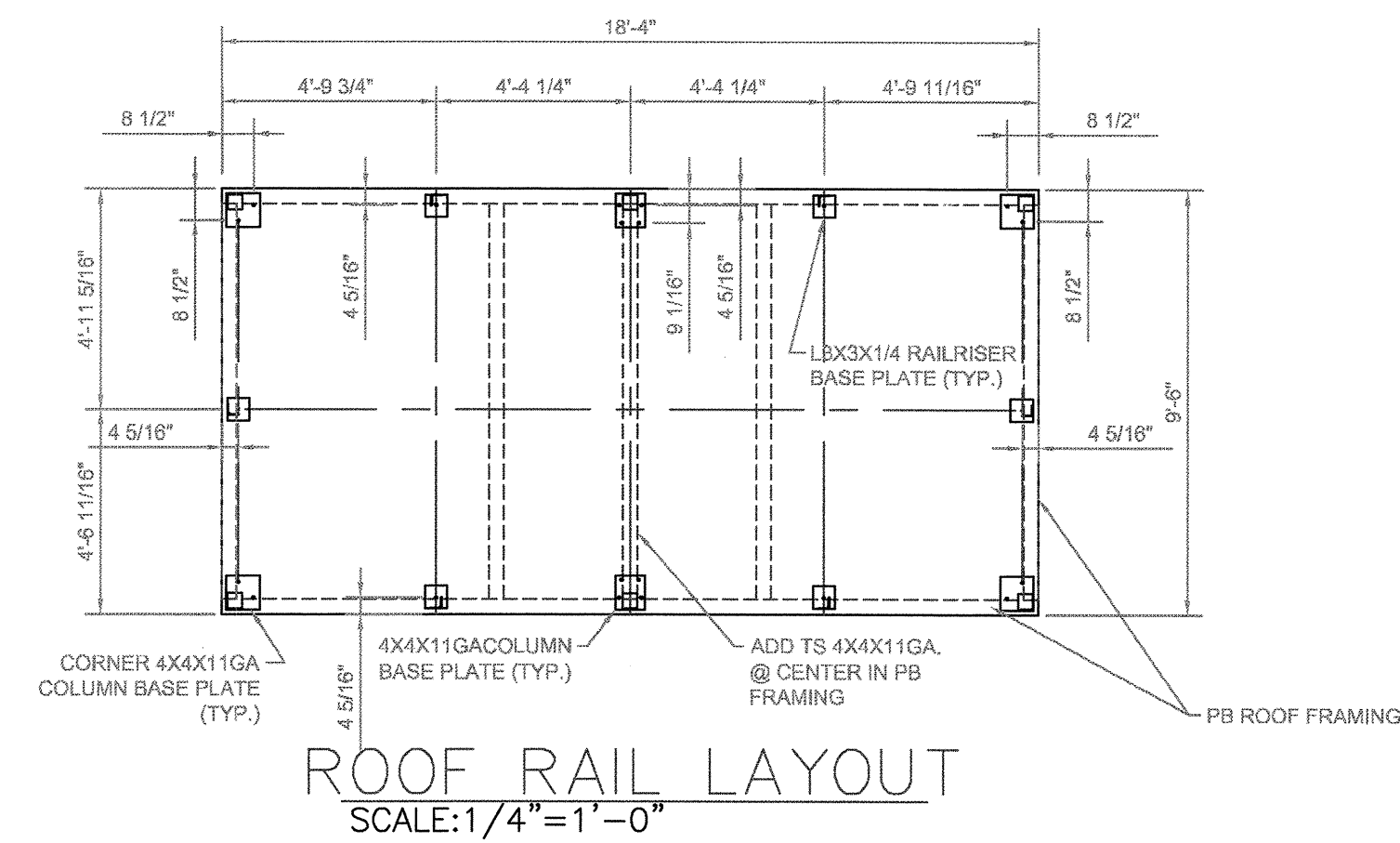
Seating Layout & Concrete Layout - Visitor
537 Total Seats

THE RIVERCREST PUBLIC SCHOOLS
Rivercrest H.S. Football Stadium
Wilson, Arkansas

REV	BY	DATE	DESCRIPTION	CHKD	DATE
1	LA	02/20/17		LA	
2	LA			LA	
3	LA			LA	
4	LA			LA	
5	LA			LA	
6	LA			LA	
7	LA			LA	
8	LA			LA	
9	LA			LA	
10	LA			LA	

JOB NUMBER: 17sd054
SHEET: 16 OF 17

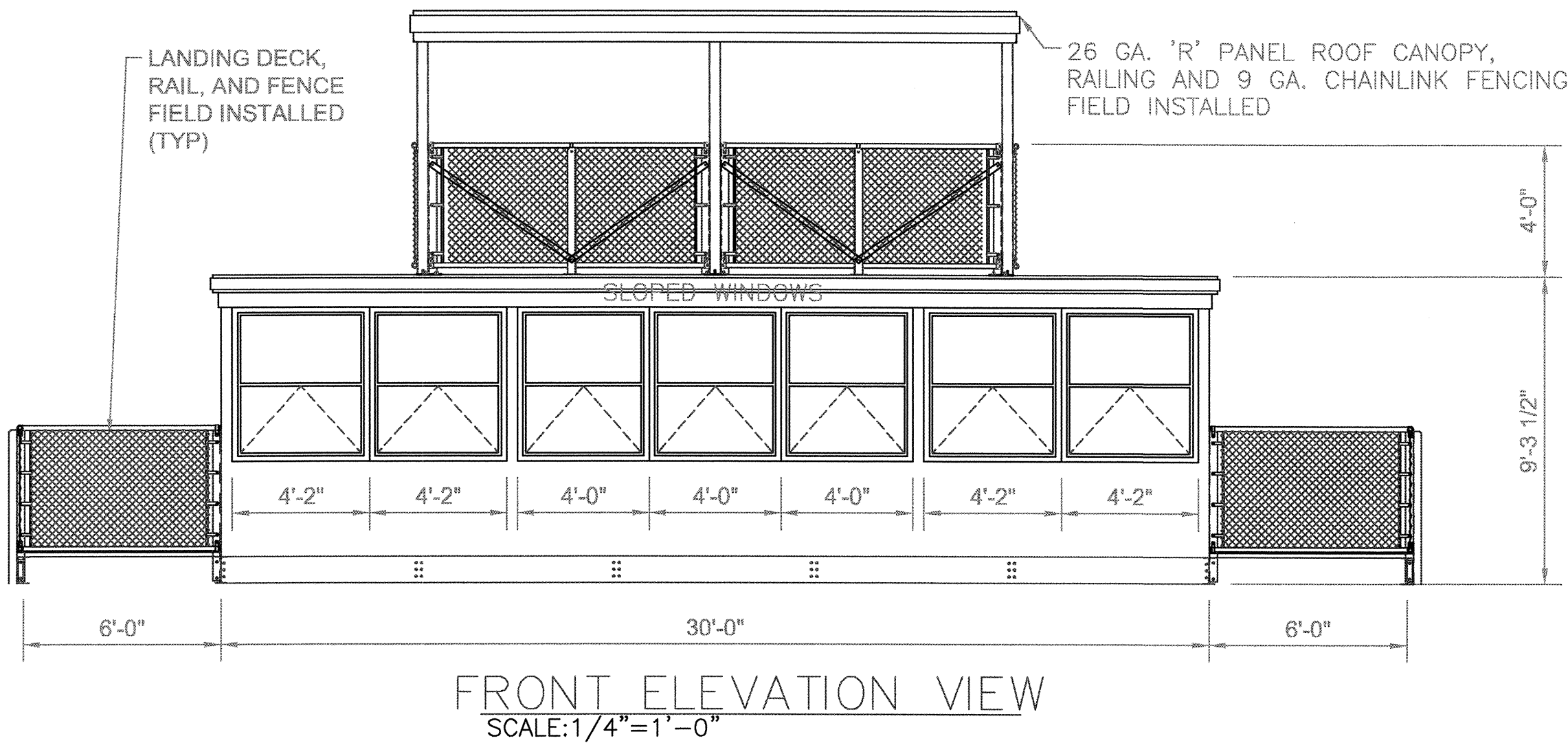
22" X 34" (11x17 = 1/2 indicated scale)



LOAD CENTER SCHEDULE
GENERAL ELECTRIC #TLM1620CCU
PANEL LP 200 AMP RATED - 32 CIRCUIT W/ EQUIPMENT GROUND 240/120 VOLTS 1 PH.
MOUNTING: FLUSH SURFACE 22,000 SYN. A.I.C. MIN. 100 AMP MAIN BREAKER

BREAKER SIZE POLE	CIR. #	BUS		CIR. #	BREAKER SIZE POLE	RECP. FRONT WALL	
		A	B				
2	1			2	20	1	RECP. FRONT WALL
2	1			4	20	1	(1) 4X2 2 LAMP RECESSED
(1) 4X2 2 LAMP RECESSED	20	1		6	20	1	(2) 4X2 2 LAMP RECESSED
RECP. BACK WALL	20	1		8	20	1	RECP. BACK WALL
RECP. BACK WALL	20	1		10	20	1	RECP. BACK WALL
2 RECP. BACK WALL	20	1		12	20	1	RECP. ROOFTOP
2 RECP. BACK WALL	20	1		14	20	1	RECP. BACK WALL
RECP. ROOFTOP	20	1		16	2		
PTAC-1	20	1		18	20	1	PTAC-2
PTAC-1	20	1		20	20	1	PTAC-2
PTAC-3	20	2		22	20	1	SPARE
PTAC-3	20	2		24	20	1	SPARE
SPACE				26			SPACE
SPACE				28			SPACE
SPACE				30			SPACE
SPACE				32			SPACE

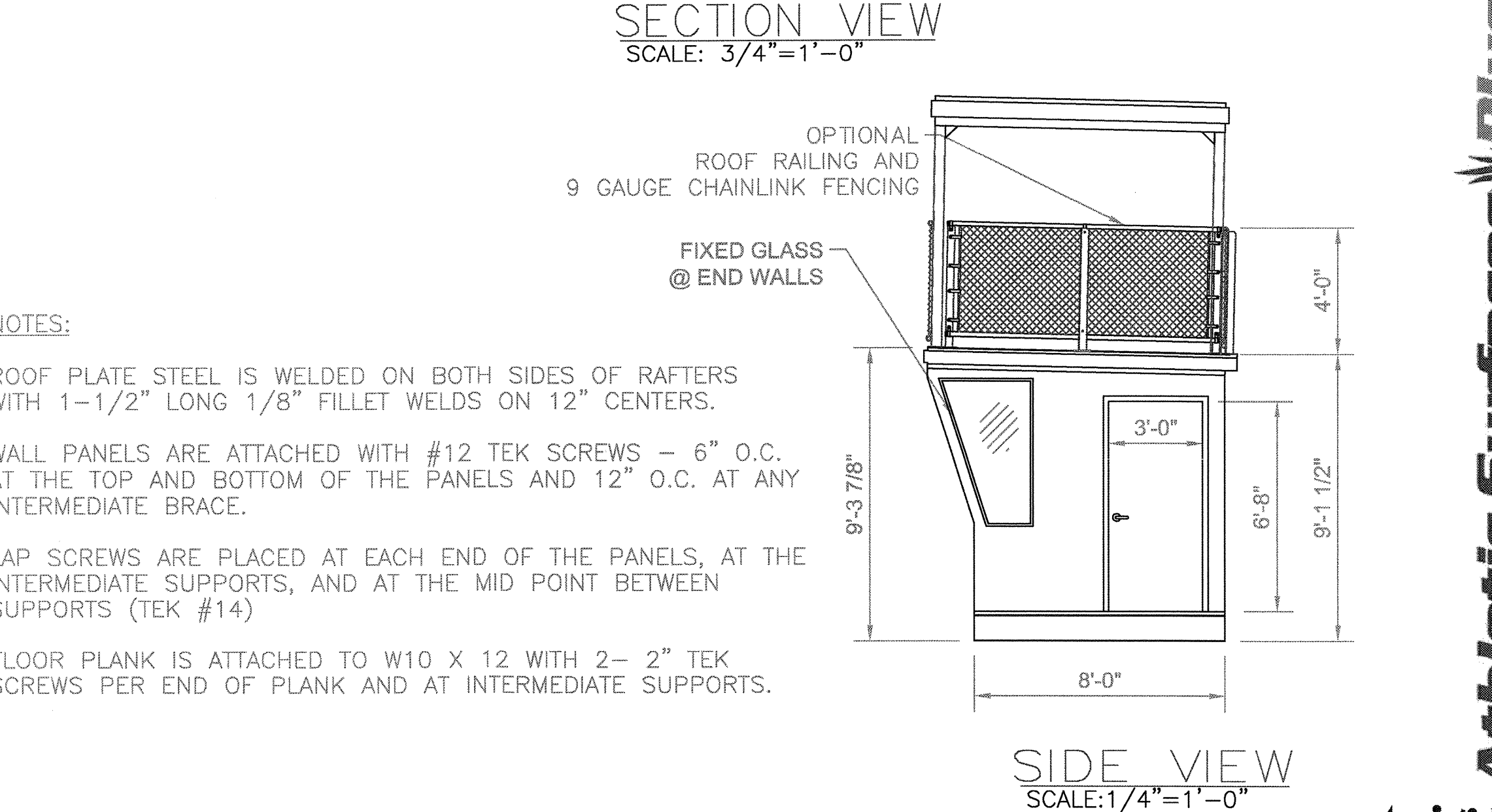
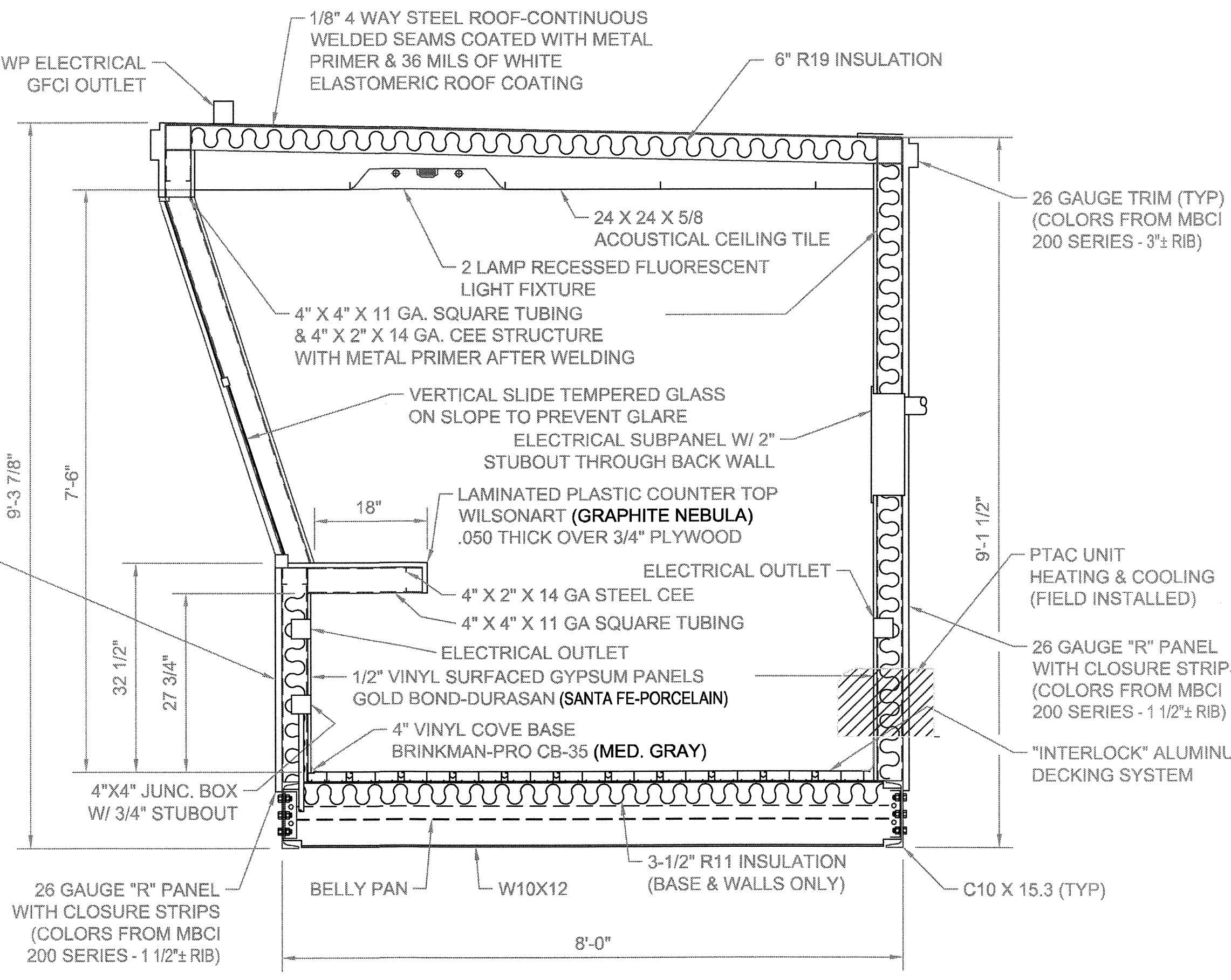
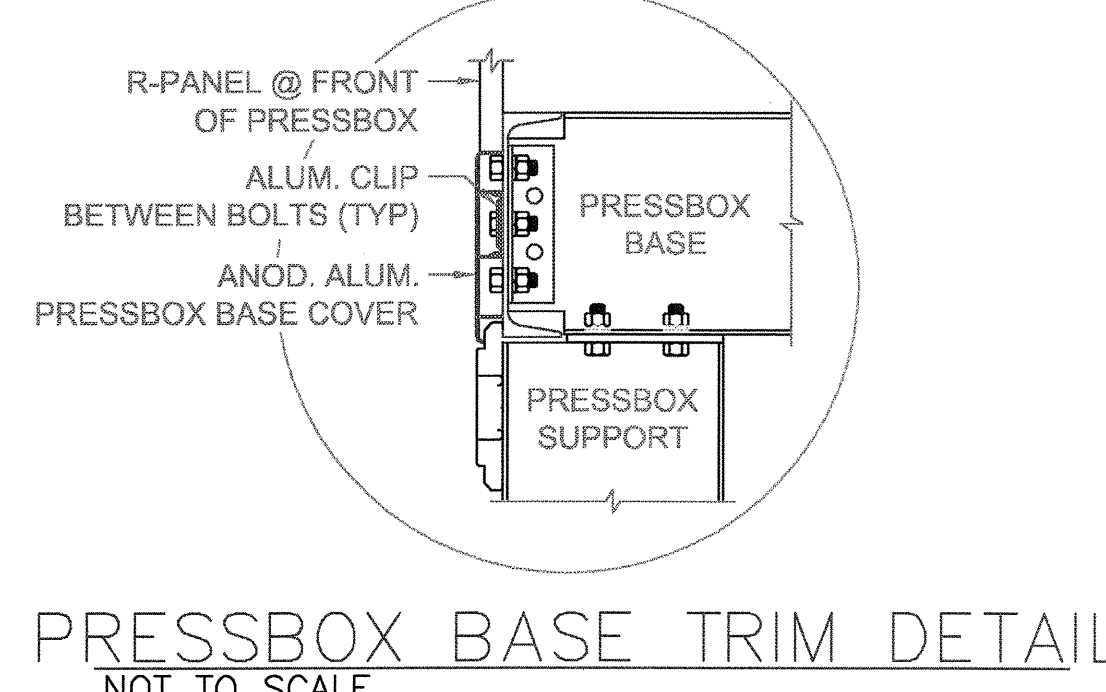
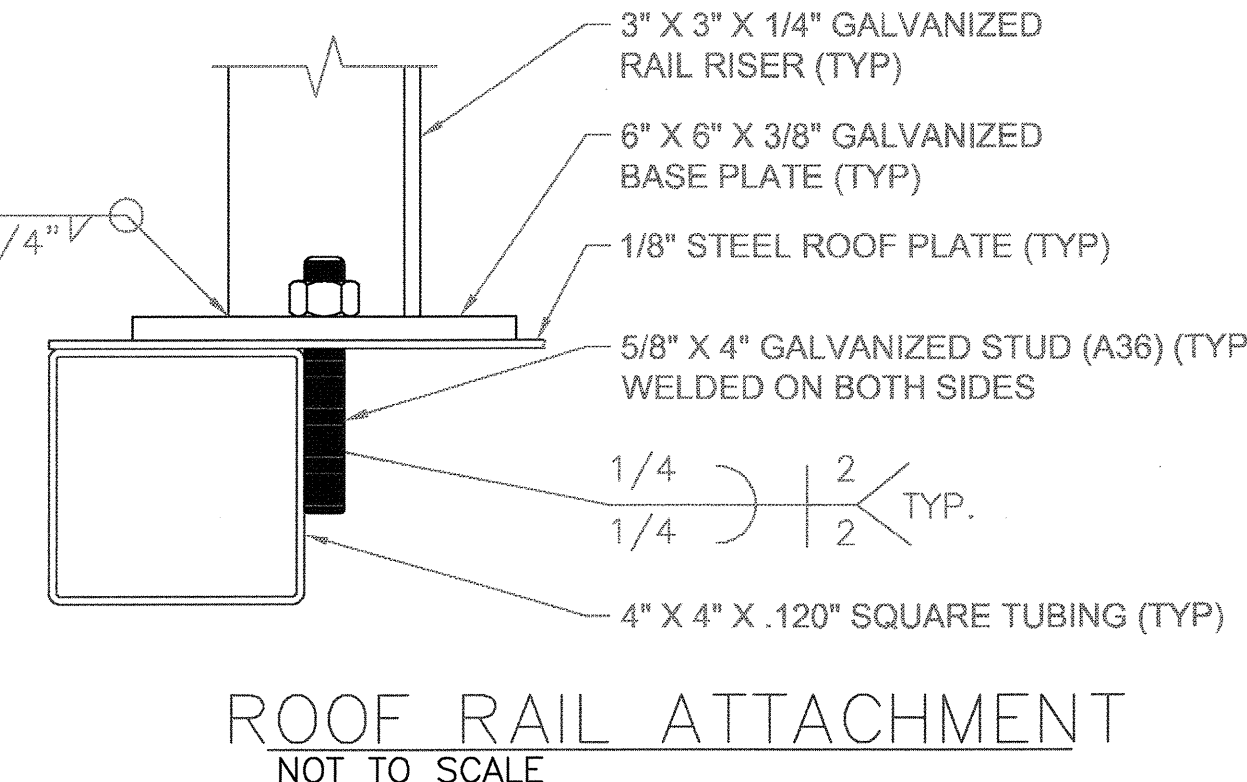
- 15A. 125V. DUPLEX RECP. (GFCI WHERE NOTED)
- 15A. 125V. SINGLE POLE DECORATOR STYLE SWITCH
- 15A. 125V. 3-WAY DECORATOR STYLE SWITCH OS - WITH MANUAL ON/OFF OCCUPANCY SENSOR
- 4X4X2 1/8" JUNCTION BOX W/ 3/4" C STUBOUT UNDER FLOOR FOR USE BY OTHERS
- 4X2 - 2 LAMP FLUORESCENT FIXTURE LITHONIA 2GT8 2 32 A12 MVOLT GEB10RS
- CONDUIT WILL BE 1/2" EMT, 1/2" STEELFLEX, OR SURFACE RACEWAY UNLESS OTHERWISE NOTED
- WIRING ON 20A BREAKERS WILL BE #12 = THWN - THHN
- EQUIPMENT GROUND RUN IN ALL CONDUITS OR NON-METALLIC SURFACE RACEWAYS



PRESS BOX EXTERIOR COMPONENTS COLOR SELECTION SCHEDULE
PLEASE MARK COLOR SELECTIONS FOR EACH MATERIAL ITEM ON THIS SCHEDULE.

MATERIALS	COLOR SELECTIONS			
	TRIM	ROOF TRIM	WINDOW TRIM	DOOR EXTERIOR
WINDOW FRAMES				
WHITE				
BRONZE				
TAN				
SILVER				
STANDARD COLORS				
HAWAIIAN BLUE				
BRITE RED				
FERN GREEN				
BURNISHED SLATE				
POLAR WHITE				
ASH GREY				
SADDLE TAN				
DESERT SAND				
KOKO BROWN				
SOLAR WHITE				
CHARCOAL GREY				
COBALT BLUE				
RUSTIC RED				
LIGHT STONE				
MEDIUM BRONZE				
SNOW WHITE				
SLATE GRAY				
ALMOND				
CLASSIC GREEN				
BROWNSTONE				
BRITE RED				
HARBOR BLUE				
BONE WHITE				
COAL BLACK				
ORANGE				

SPECIAL NOTES:
DATA PANEL, ELECT. OUTLETS FOR INSECT CONTROL APPLIANCES, AND NORTH FACE ELECT. BOX AT DOOR STRIKE.



- NOTES:**
- ROOF PLATE STEEL IS WELDED ON BOTH SIDES OF RAFTERS WITH 1-1/2" LONG 1/8" FILLET WELDS ON 12" CENTERS.
 - WALL PANELS ARE ATTACHED WITH #12 TEK SCREWS - 6" O.C. AT THE TOP AND BOTTOM OF THE PANELS AND 12" O.C. AT ANY INTERMEDIATE BRACE.
 - LAP SCREWS ARE PLACED AT EACH END OF THE PANELS, AT THE INTERMEDIATE SUPPORTS, AND AT THE MID POINT BETWEEN SUPPORTS (TEK #14)
 - FLOOR PLANK IS ATTACHED TO W10 X 12 WITH 2- 2" TEK SCREWS PER END OF PLANK AND AT INTERMEDIATE SUPPORTS.

NOT FOR CONSTRUCTION

DETAIL NUMBER 119
SHEET SHOWN OF 319

THIS DRAWING AND ALL INFORMATION THEREIN IS THE PROPERTY OF THE SOUTHERN BLEACHER COMPANY. NO PART OF THIS DRAWING IS TO BE LOANED, REPRODUCED, COPIED, OR IN ANY MANNER USED WITHOUT THE WRITTEN CONSENT OF THE COMPANY. TURN UPON DEMAND AND IS NOT TO BE USED DIRECTLY OR INDIRECTLY IN ANY WAY DETRIMENTAL TO OUR INTERESTS.

PO Box One, Graham, Texas 76451
801 Fifth Street.
Phone: 940/549-6983 940/549-1366
ESTABLISHED 1946

Southern BLEACHER COMPANY
GRANDSTANDS • BLEACHERS • STADIUMS

FRONTIER ENGINEERING, INC.
ENGINEERS • CONSULTANTS
CIVIL ENGINEERS • FORT SMITH, AR 72917
P.O. Box 11988 • FORT SMITH, AR 72917

Athletic Surfaces Plus

Pressbox Hub 8' X 42' Half-Slope
THE Rivercrest Public Schools
Rivercrest H.S. Football Stadium
Wilson, Arkansas

DATE: 02/20/17
DRAWN: LA
CHECKED: CHD
JOB NUMBER: 17sd054
SHEET 17 OF 17
22" X 34" (11x17 = 1/2 indicated scale)