

A B C D E F G H J K L M

A B C D E F G H J K L M

A B C D E F G H J K L M

A B C D E F G H J K L M

A B C D E F G H J K L M

A B C D E F G H J K L M

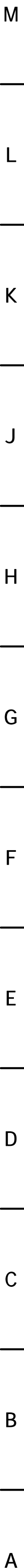
A B C D E F G H J K L M

A B C D E F G H J K L M

A B C D E F G H J K L M

A B C D E F G H J K L M

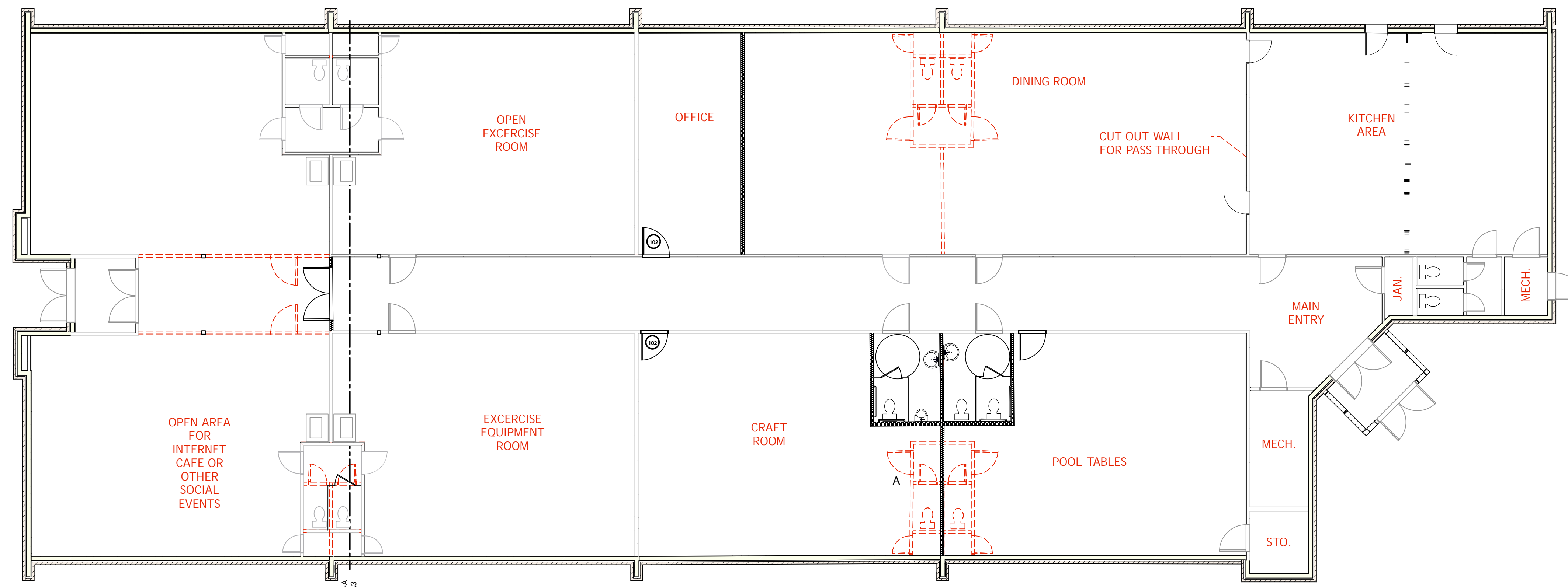
A B C D E F G H J K L M



A B C D E F G H J K L M


- A B C D E F G H J K L M

A B C D E F G H J K L M



DEMOLITION PLAN
Scale: 1/8" = 1'-0"

EXTG. WALL TO
BE REMOVED
(DOOR SHOWN)



EXTG. WALL TO
REMAIN
(DOOR SHOWN)

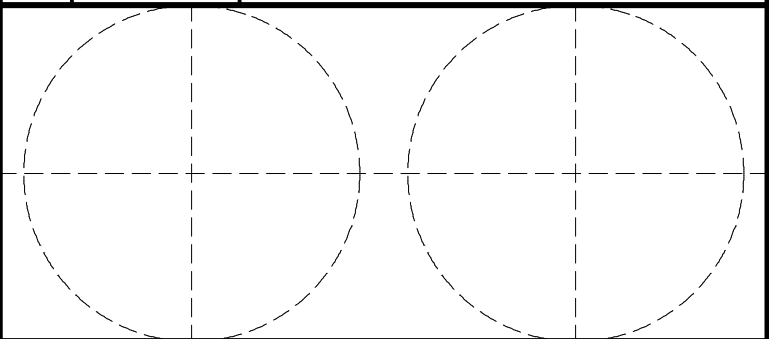


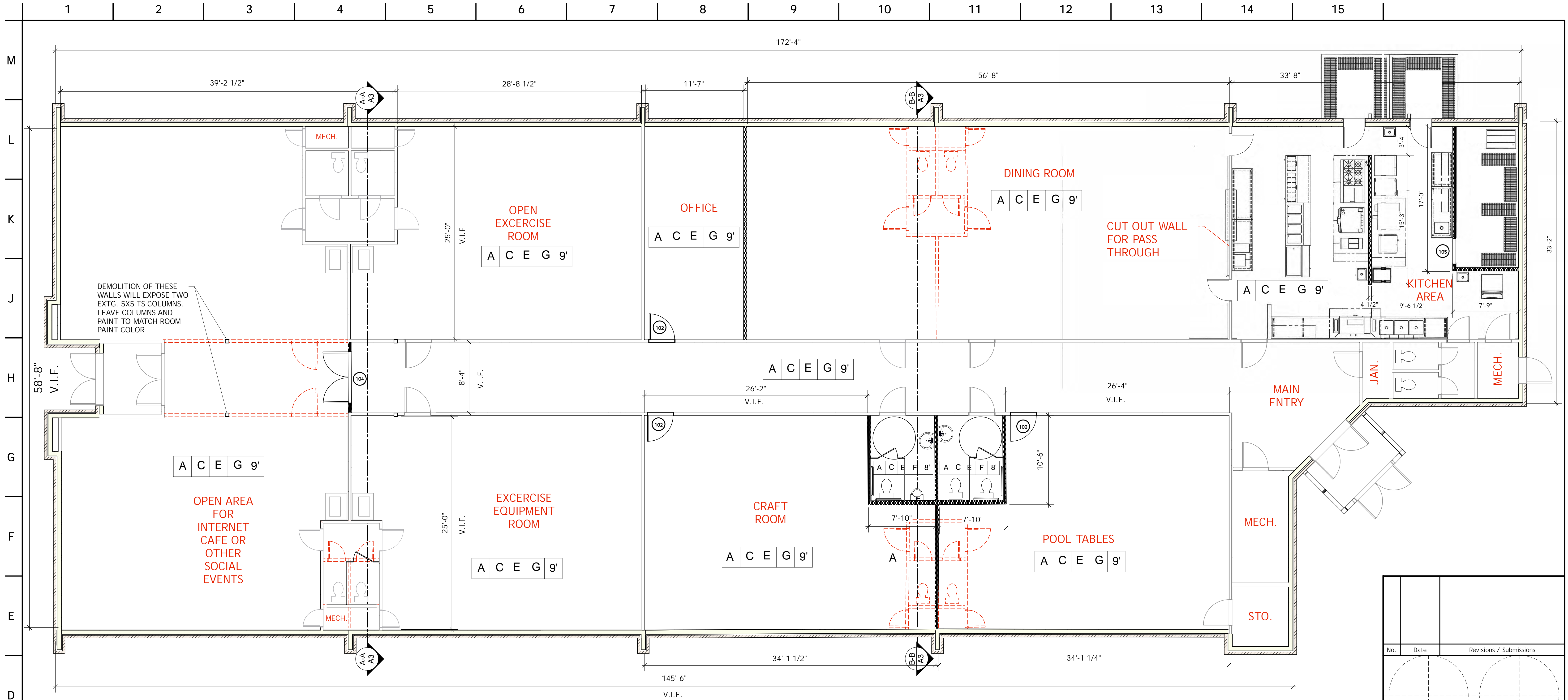
NEW WALL
(NEW DOOR SHOWN)

WALL KEY

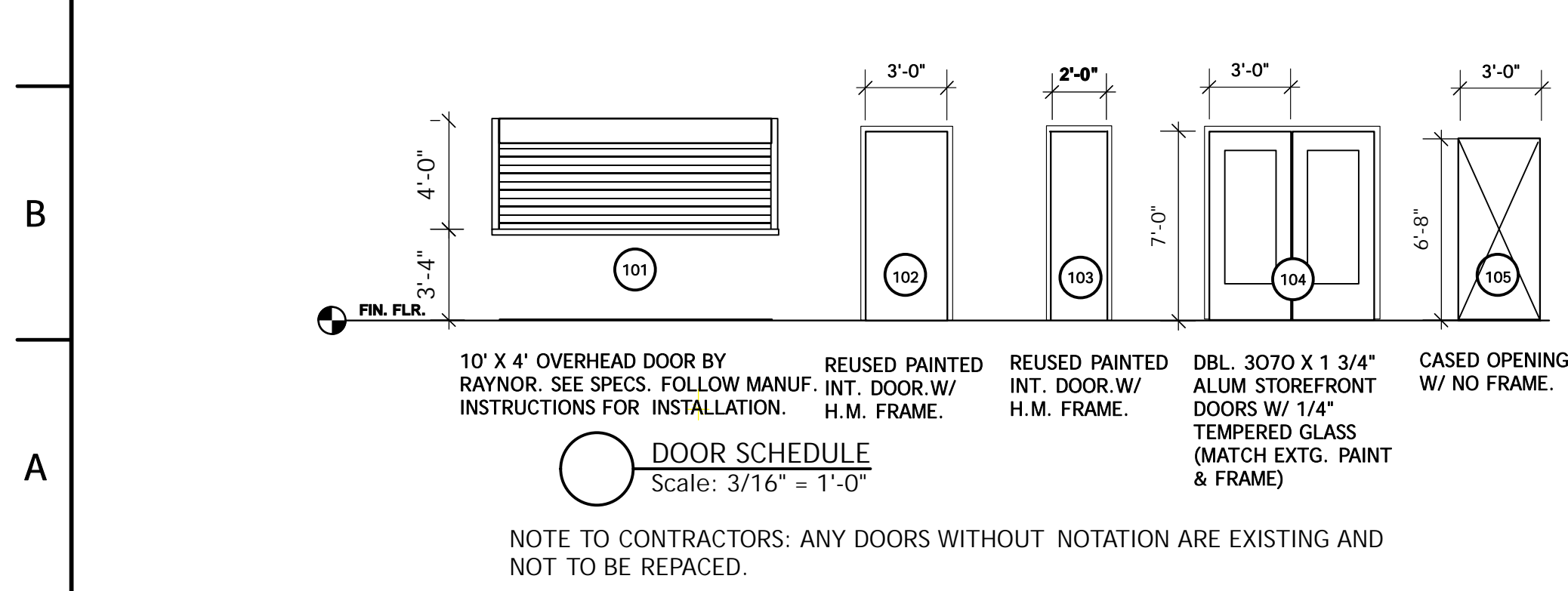
NOTE TO CONTRACTORS: THE DEMOLITION PLAN IS PROVIDED FOR INFORMATION ONLY. DEMOLITION IS NOT IN CONTRACT.

- General Notes**
1. Demolish all existing obsolete communication and phone lines from lease space. Replace wall plates with blank cover plates.
 2. Contractor shall be responsible for seeing that each subcontractor cleans up and removes, DAILY, any and all debris generated by construction operations, making ready for all subsequent subcontractors.
 3. The Contractor shall protect interior surface of glazing at all times from breakage and scratching of interior window coatings. Any hollows or damaged areas of concrete floor shall be repaired prior to commencement of new construction. The Contractor shall remove from demolished walls or portions of walls all power circuits and switch legs back to first junction box in ceiling space. Remove any millwork or wall-mounted plumbing fixtures from walls indicated to be demolished and not otherwise shown. The Contractor shall maintain a truck or other vehicle for removal of waste materials daily from site. waste materials shall be transported to such vehicle by covered rubber-tired carts. Any lighting fixtures removed from the space and not disposed of shall be salvaged as directed by the Owner's representative. the contractor shall take care not to unnecessarily cause damage to the lighting fixtures.
 4. Remove power devices back to first junction box in ceiling space, typical.
 5. General Contractor SHALL: Exercise reasonable precaution in the protection of all existing finishes to remain and/or all existing substrates to receive new finish; Schedule and coordinate all trades to eliminate damage to all floor materials once installed; Provide protective coverings for all floor, partition and ceiling finishes to remain in the project area and for all finishes which may be subject to traffic or construction activity in adjacent areas; Provide protective covering for all windows and other glass to remain; Provide impact protection for all interior finishes; Provide minimum 1/8 inch thick tempered hardboard or plywood gang way to protect all flooring materials from breakage, cracking, scratching or other damage from dollies, hand trucks or rolling bins or tool carts used to transport materials to and from project area; Extend protection from building entry(ies) to project area.

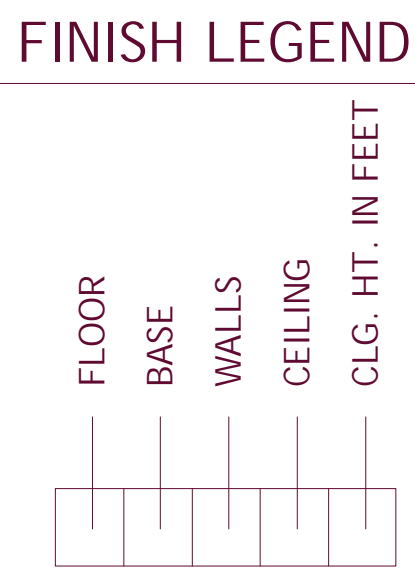
No.	Date	Revisions / Submissions
		
Design Firm	Zachary F. Mobley, Architect 501 Dry Kiln Rd. MAILING ADDRESS: P. O. Box 2849 Batesville, Arkansas 72503	
Consultant		
Project Title	A SENIOR CITIZENS' CENTER NEWPORT, AR	
Drawing Title	DEMOLITION PLAN	
Project Manager Zack Mobley	Project ID 2016-1	
Drawn By ZFM	Scale	
Reviewed By NFM	Drawing No.	
Date	D-1 of Total Sheets	
CAD File Name		



FLOOR PLAN
Scale: 3/16" = 1'-0"



DOOR SCHEDULE
Scale: 3/16" = 1'-0"



FINISH LEGEND

FINISH LEGEND

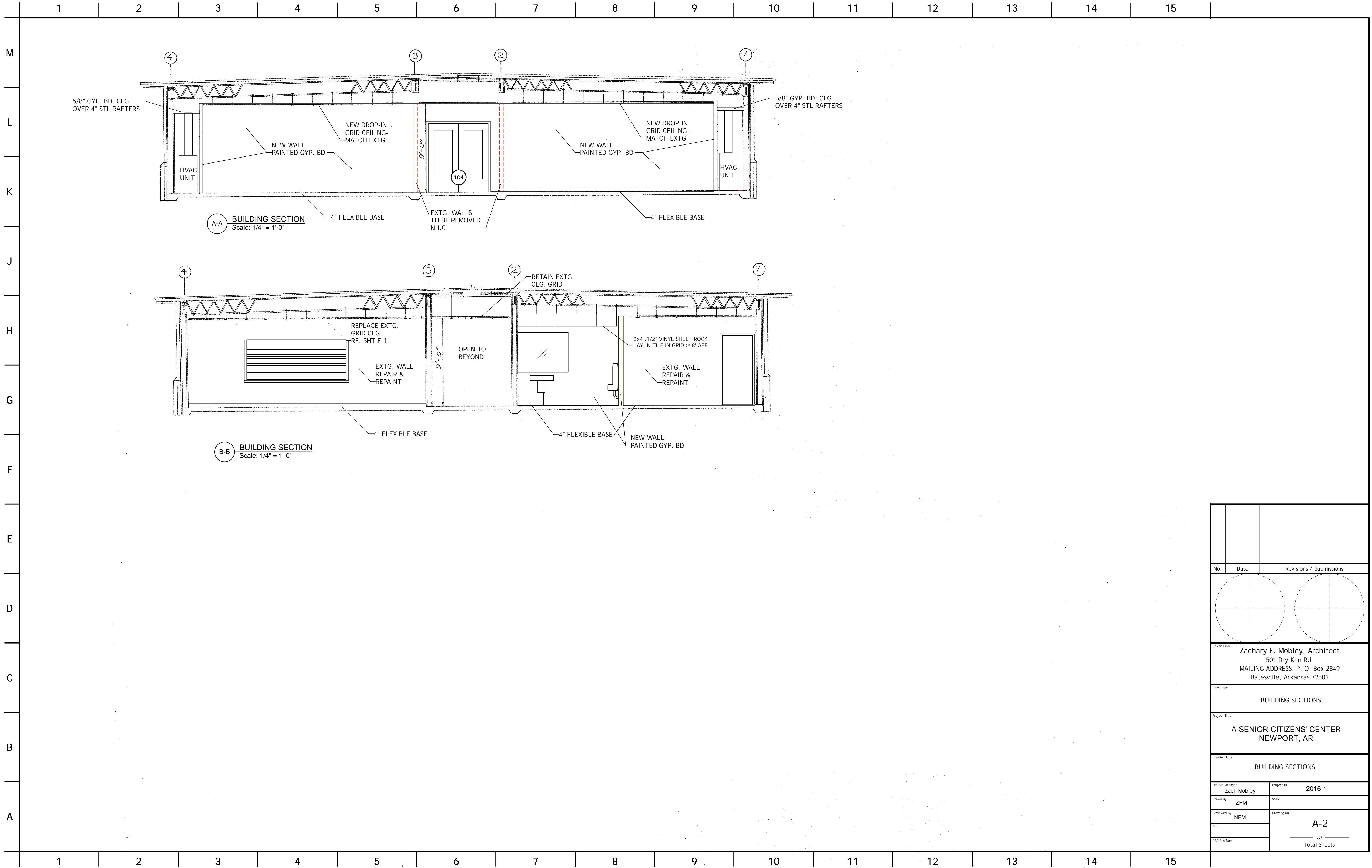
- A) - EXISTING VINYL TILE- REPAIR
- B) - VINYL TILE
- C) - 4" VINYL COVE BASE
- D) - NO BASE
- E) - 5/8" GYP. BOARD - PAINTED
- F) - 2x4 ,1/2" VINYL SHEET ROCK LAY-IN TILE IN GRID
- G) - 2x4 ,5/8" ACCOUSTICAL LAY-IN TILE IN GRID

NOTE TO CONTRACTOR: SOME EXISTING CEILING GRID TO REMAIN, SOME TO BE REPLACED. REVIEW THE REFLECTED CEILING PLAN (SHT. E-1) TO DETERMINE WHICH WILL BE REUSED. REMOVAL OF CEILING GRID TO BE REPLACED, AS WITH ALL DEMOLITION, IS NOT IN THE CONTRACT.

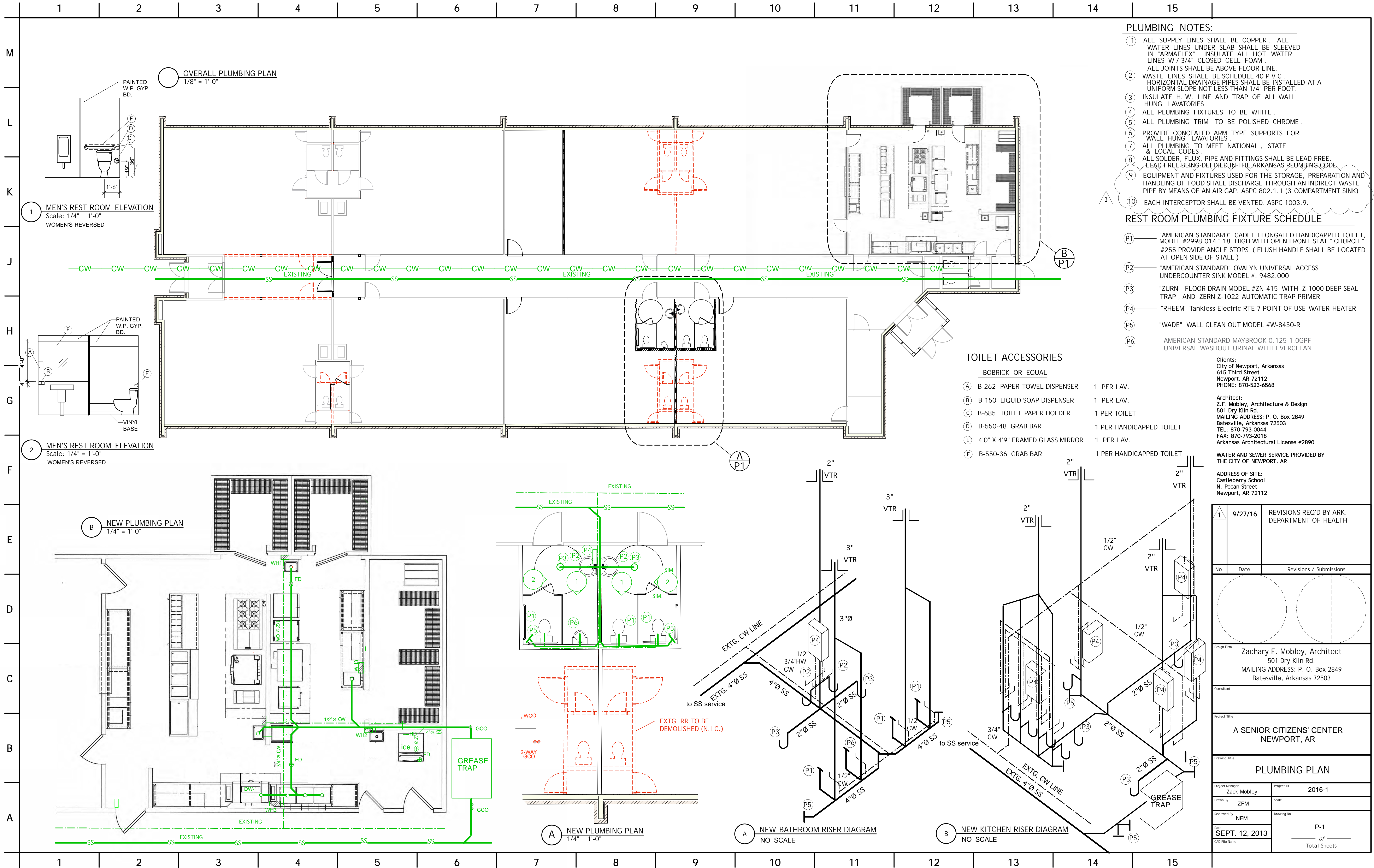


WALL KEY

Revisions / Submissions		
No.	Date	
Design Firm		
Zachary F. Mobley, Architect 501 Dry Kiln Rd. MAILING ADDRESS: P. O. Box 2849 Batesville, Arkansas 72503		
Consultant		
Project Title		
A SENIOR CITIZENS' CENTER NEWPORT, AR		
Drawing Title		
FLOOR PLAN, DOOR, WINDOW SCHEDULES		
Project Manager		Project ID
Zack Mobley		2016-1
Drawn By		Scale
ZFM		
Reviewed By		Drawing No.
NFM		A-1
Date		of
CAD File Name		Total Sheets

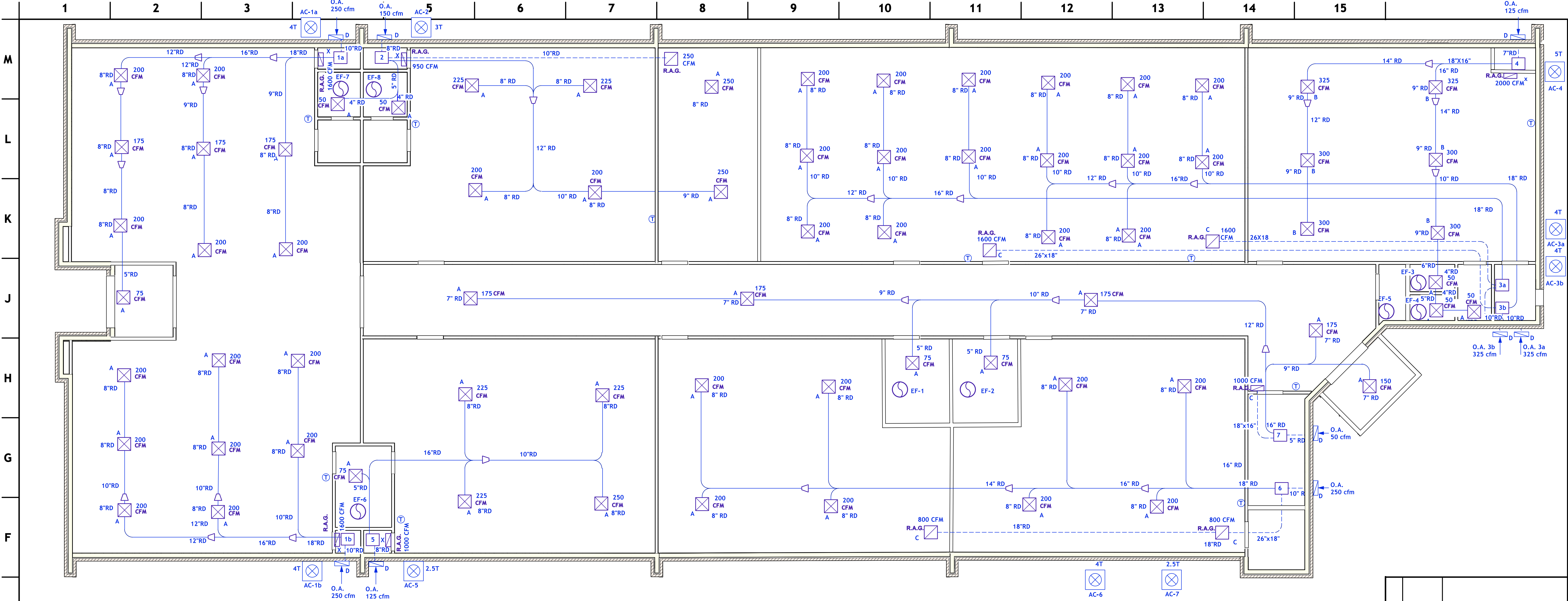


No.	Date	Revisions / Submissions
<div></div>		
Design Firm Zachary F. Mobley, Architect 501 Dry Kiln Rd. MAILING ADDRESS: P. O. Box 2849 Batesville, Arkansas 72503		
Consultant BUILDING SECTIONS		
Project Title A SENIOR CITIZENS' CENTER NEWPORT, AR		
Drawing Title BUILDING SECTIONS		
Project Manager Zack Mobley		Project ID 2016-1
Drawn By ZFM		Scale
Reviewed By NFM		Drawing No. A-2
Date		of Total Sheets
CAD File Name		



	1	2	3	4	5	6	7	8	9	10	11	12	13	14	15			
M	SECTION 01500 - TEMPORARY FACILITIES AND CONTROLS PART 0.1 A. B. C. PART PART 0.1 A. B. 11 - GENERAL SECTION REQUIREMENTS STANDARDS: COMPLY WITH NFPA 241, "STANDARD FOR SAFEGUARDING CONSTRUCTION, ALTERATIONS, AND DEMOLITION OPERATIONS"; ANSI A10 SERIES STANDARDS FOR "SAFETY REQUIREMENTS FOR CONSTRUCTION AND DEMOLITION"; AND NECA ELECTRICAL DESIGN LIBRARY'S "TEMPORARY ELECTRICAL FACILITIES." 1. ELECTRICAL SERVICE: COMPLY WITH NEMA, NECA, AND UL STANDARDS AND REGULATIONS FOR TEMPORARY ELECTRIC SERVICE. INSTALL SERVICE TO COMPLY WITH NFPA 70, AT THE EARLIEST POSSIBLE TIME, WHEN ACCESSIBLE TO OWNER, CHANGE OVER FROM USE OF TEMPORARY UTILITY SERVICES TO USE OF PERMANENT UTILITIES. REMOVE TEMPORARY FACILITIES AND CONTROLS BEFORE SUBSTANTIAL COMPLETION. PERSONNEL REMAINING AFTER SUBSTANTIAL COMPLETION WILL BE PERMITTED TO USE PERMANENT FACILITIES, UNDER CONDITIONS ACCEPTABLE TO OWNER. 12 - PRODUCTS (NOT APPLICABLE) 13 - EXECUTION			SECTION 01600 - MATERIAL AND EQUIPMENT PART 1 - GENERAL 1.01 "SOURCE LIMITATIONS": TO THE FULLEST EXTENT POSSIBLE, PROVIDE PRODUCT AS OF THE SAME KIND AND FROM A SINGLE SOURCE. 1.02 "PRODUCT DELIVERY, STORAGE AND HANDLING": DELIVER, STORE AND HANDLE PRODUCTS IN ACCORDANCE WITH MANUFACTURER'S RECOMMENDATIONS, USING METHODS THAT WILL PREVENT DAMAGE, DETERIORATION AND LOSS. A. SCHEDULE DELIVERY TO MINIMIZE LONG TERM STORAGE AND PREVENT OVERCROWDING CONSTRUCTION SPACES. B. DELIVER PRODUCTS IN MANUFACTURER'S ORIGINAL SEALED CONTAINER OR PACKAGING SYSTEM, COMPLETE WITH LABELS AND INSTRUCTIONS FOR HANDLING, STORING, UNPACKING, PROTECTING AND INSTALLING. 1.03 "PRODUCT SELECTION": PROVIDE PRODUCTS THAT COMPLY WITH THE CONTRACT DOCUMENTS, ARE UNDAMAGED AND UNUSED AT INSTALLATION.			SECTION 01700 - EXECUTION REQUIREMENTS PART 0.1 A. B. C. PART PART 0.1 A. B. C. 0.2 A. B. 0.3 A. 17 - GENERAL CLOSEOUT SUBMITTALS Record Drawings: Maintain a set of Contract Drawings as Record Drawings. Mark to show installation that varies from the Work originally shown. Record Specifications: Maintain one copy of the Project Manual, including addenda, as Record Specifications. Mark to show variations in Work performed in comparison with the text of the Specifications and modifications. Operation and Maintenance Data: Organize data into three-ring binders, with pocket folders for folded sheet information. Mark identification on front and spine of each binder. Include the following: 1. Emergency instructions. 2. Spare parts list. 3. Copies of warranties. 4. Wiring diagrams. 5. Shop Drawings and Product Data. 18 - PRODUCTS (Not Applicable) 19 - EXECUTION EXAMINATION AND PREPARATION Examine substrates and conditions for compliance with manufacturer's written requirements including, but not limited to, surfaces that are sound, level, and plumb; substrates within installation tolerances; surfaces that are smooth, clean, and free of deleterious substances; and application conditions within environmental limits. Proceed with installation only after unsatisfactory conditions have been corrected. Prepare substrates and adjoining surfaces according to manufacturer's written instructions, including, but not limited to, filler and primer application. Where Drawings indicate dimensions of existing construction verify by field measurement. Where fabricated products are to be fitted to other construction, verify dimensions by field measurement before fabricating and, when possible, allow for fitting and trimming during installation. CUTTING AND PATCHING Do not cut structural members without prior written approval of Architect. For patching, provide materials whose installed performance will equal or surpass that of existing materials. For exposed surfaces, provide or finish materials to visually match existing adjacent surfaces to the fullest extent possible. INSTALLATION Comply with manufacturer's written instructions for installation. Anchor each product securely in place, accurately located and aligned. Clean exposed surfaces and protect from damage. If applicable, prepare surfaces for field B. 0.4 A. finishing. Comply with NFPA 70 for installation of electrically operated equipment and electrical components and materials. FINAL CLEANING Clean each surface or item as follows before requesting inspection for certification of Substantial Completion: 1. Remove labels that are not permanent. 2. Clean transparent materials, including mirrors. Remove excess glazing compounds. Replace chipped or broken glass. 3. Clean exposed finishes to a dust-free condition, free of stains, films, and foreign substances. Leave concrete floors broom clean. 4. Vacuum carpeted surfaces and wax resilient flooring. 5. Wipe surfaces of mechanical and electrical equipment. Remove excess lubrication. Clean plumbing fixtures. Clean light fixtures and lamps. 6. Clean the site. Sweep paved areas; remove stains, spills, and foreign deposits. Rake grounds to a smooth, even-textured surface. CLOSEOUT PROCEDURES Request Substantial Completion inspection once the following are complete: 1. Advise Owner of pending inspection changeover requirements. 2. Submit Record Drawings, maintenance manuals, warranties, and similar record information. 3. Deliver spare parts, extra materials, and similar items. 4. Changeovers locks and transmit keys to Owner. 5. Complete startup testing of systems and instruction of operation and maintenance personnel. 6. Remove temporary facilities and controls. 7. Complete final cleanup. 8. Touch up, repair, and restore marred, exposed finishes. 9. Obtain final inspections from authorities having jurisdiction. 10. Obtain certificate of occupancy. On receipt of a request for inspection, Architect will proceed with inspection or advise Contractor of unfilled requirements. Architect will prepare the Certificate of Substantial Completion after inspection or advise Contractor of items that must be completed or corrected before the certificate will be issued. Arrange for each installer of equipment that requires operation and maintenance to provide instruction to Owner's personnel. Include a detailed review of the following: 1. Startup and shutdown. 2. Emergency operations and safety procedures. 3. Noise and vibration adjustments. 4. Maintenance manuals. 5. Spare parts, tools, and materials. 6. Lubricants and fuels. 7. Identification systems. 8. Control sequences. 9. Hazards. 10. Warranties and bonds. Request inspection for certification of final acceptance, once the following are complete: 1. Submit a copy of the Substantial Completion inspection list stating that each item has been completed or otherwise resolved for acceptance. 2. Submit final meter readings for utilities, a record of stored fuel, and similar data as of the date of 0.5 A. B. C. D.			SECTION 03300 - CAST-IN-PLACE CONCRETE PART 1 GENERAL 1.01 SUMMARY A. EXTENT OF CAST-IN-PLACE CONCRETE IS SHOWN ON DRAWINGS. B. TESTING AND INSPECTION: 1. BY THE CONTRACTOR - PAYMENT OF COSTS FOR CONCRETE TESTING AND INSPECTION AS HEREINAFTER DESCRIBED.			d. WATER-REDUCING, NONCHLORIDE ACCELERATING ADMIXTURE: ASTM C494, TYPE E, CONTAINING NOT MORE THAN 0.1 % CHLORIDEIONS. e. WATER-REDUCING, RETARDING ADMIXTURE: ASTM C494, TYPE D, CONTAINING NOT MORE THAN 0.1 % CHLORIDEIONS. f. CERTIFICATION: UPON THE OWNER OR OWNERS' REPRESENTATIVE REQUEST ¹ , PROVIDE ADMIXTURE MANUFACTURER'S WRITTEN CERTIFICATION THAT CHLORIDEION CONTENT COMPLIES WITH SPECIFIED REQUIREMENTS. g. CALCIUM CHLORIDE OR ADMIXTURES CONTAINING MORE THAN 0.1 % CHLORIDEIONS ARE NOT PERMITTED. 2. SUBJECT TO COMPLIANCE WITH REQUIREMENTS, ADMIXTURES USED SHALL BE PRODUCTS OF ONE OF THE FOLLOWING, WHERE MORE THAN ONE ADMIXTURE IS USED IN A CONCRETE MIX, THEY SHALL BE OF SAME MANUFACTURER. a. CHEM-MASTERS CORP. b. EUCLID CHEMICAL CO. c. CONSTRUCTION PRODUCTS - DIVISION OF W. R. GRACE & CO. d. MASTER BUILDERS- DIVISION OF MARTIN MARIETTA CORP. e. Sika CORP.			3.07 SLABS A. EXAMINATION 1. VERIFY THAT FLOOR SURFACES ARE READY TO RECEIVE WORK. 2. STARTING WORK CONSTITUTES ACCEPTANCE OF THE EXISTING CONDITIONS AND THIS CONTRACTOR SHALL THEN, AT HIS EXPENSE, BE RESPONSIBLE FOR CORRECTING ALL UNSATISFACTORY AND DEFECTIVE WORK ENCOUNTERED. B. FINISHING 1. FINISH CONCRETE FLOOR SURFACES IN ACCORDANCE WITH ACI 301. 2. INITIAL WORKING: a. REMOVE SURFACE IRREGULARITIES WITH BULL FLOAT BEFORE WATER APPEARS ON CONCRETE SURFACE. b. DO NO FURTHER WORKING OF SURFACE UNTIL TIME FOR FLOATING; DO NOT WORK SURFACE WHILE WATER IS PRESENT. c. "DRY SPRINKLE" METHOD FINISHING IS NOT ACCEPTABLE AND WILL BE CAUSE FOR REJECTION. 3. FLOATING: a. BEGIN FLOAT OPERATIONS WHEN BLEED WATER SHEEN HAS DISAPPEARED AND CONCRETE HAS STIFFENED SUFFICIENTLY TO ALLOW WALKING ON SURFACE WITHOUT LEAVING HEEL PRINTS MORE THAN 1/4 INCH DEEP. USE MAGNESIUM OR ALUMINUM POWER FLOAT. b. PREMATURE FINISHING BRINGS EXCESSIVE FINES TO SURFACE AND CAUSES SLAB TO HAVE SOFT SURFACE WHICH WILL DUST. 4. TROWELING: a. BEGIN TROWELING AS LONG AS POSSIBLE TO PREVENT WORKING EXCESS FINES AND WATER TO SURFACE. DO NOT BEGIN UNTIL SURFACE MOISTURE FILM AND SHINE REMAINING AFTER FLOATING HAVE DISAPPEARED. b. POWER TROWEL WHERE POSSIBLE. USE HAND TROWEL IN INACCESSIBLE AREAS. c. SLAB MUST BE ABLE TO ACCEPT SPECIFIED FLOOR TREATMENT. COORDINATE WITH FLOOR TREATMENT MANUFACTURER'S APPLICATION INSTRUCTIONS FOR PROPER FINISH AND FOR PROCEDURES WHEN FINISH IS TOO DENSE FOR PROPER FLOOR TREATMENT APPLICATION. d. DO NOT RE-WET WATER TO TROWEL. 5. BROOMED: a. PROVIDE A FLOATED FINISH, THEN FINISH WITH A FLEXIBLE BRISTLE BROOM. b. ALLOW SURFACE TO HARDEN SUFFICIENTLY TO RETAIN SCORING OR RIDGES. c. BROOM TRANSVERSE TO TRAFFIC OR AT RIGHT ANGLES TO SLOPE OF SLAB. 6. PROVIDE ACI "CLASS A" TOLERANCE= 1/8 INCH VARIATION IN 10 FEET, MEASURED WITH STRAIGHT EDGE LAID IN ANY DIRECTION. C. FINISH SCHEDULE 1. INTERIOR FLOOR SLABS: MACHINE TROWEL. 2. EXTERIOR SLAB AREAS: LIGHT BROOM. 3.08 CURING AND PROTECTION A. GENERAL: AS PER ACI 301, CHAPTER 12, EXCEPT AS NOTED. REQUIREMENTS FOR CURING AND PROTECTION SPECIFIED IN ACI 301 SHALL BE STRICTLY OBSERVED, WITH PARTICULAR EMPHASIS ON THE FOLLOWING: 1. INITIAL CURING MAY BE ACCOMPLISHED BY ANY OF THE METHODS GIVEN IN ACI 301, SECTION 12.2, EXCEPT AS NOTED, USING MATERIALS SPECIFIED HEREIN. 2. MAINTAIN INITIAL CURING FOR APPROXIMATELY 12 HOURS AFTER FINISHING. INCREASE THIS PERIOD TO 24 HOURS WHEN AIR TEMPERATURE IS 75 DEGREES F AND ABOVE. 3. TOTAL CURING PERIOD SHALL CONSIST OF 7 CUMULATIVE DAYS, (3 DAYS FOR HIGH-EARLY STRENGTH CONCRETE) NOT NECESSARILY CONSECUTIVE, DURING WHICH AIR IN CONTACT WITH CONCRETE IS ABOVE 50 DEGREES F. 4. FOR FORMED SURFACES, KEEP WOOD FORMS IN CONTACT WITH CONCRETE WET, AS WELL AS STEEL FORMS HEATED BY THE SUN. AFTER FORM REMOVAL, MAINTAIN CURING FOR ANY TIME REMAINING OF REQUIRED CURING PERIOD. B. WEATHER REQUIREMENTS: 1. WARM, DRY, OR WINDY WEATHER: USE FINISHING AID SPECIFIED HEREIN TO REDUCE MOISTURE EVAPORATION FROM FRESHLY PLACED CONCRETE WHEN IT IS EXPOSED TO RAPID DRYING CONDITIONS: DIRECT SUNLIGHT, LOW HUMIDITY, HEATED INTERIOR, HIGH WIND, ETC. PREPARE DILUTE SOLUTION AND SPRAY APPLY ON RATE OF 10 TO 20 GALLONS SOLUTION/5000 SQ. FT. IF DRYING CONDITIONS ARE PARTICULARLY SEVERE, MAKE ADDITIONAL APPLICATIONS AS REQUIRED FOLLOWING VARIOUS FINISHING STEPS. C. USE OF CURING METHODS: MAINTAIN CURING PROTECTION IN GOOD CONDITION DURING REQUIRED PERIOD. REPAIR, REAPPLY OR REPLACE WHEN NECESSARY. 1. WATER: WHEN EXCESSIVE AMOUNTS OF WATER ARE USED FOR CURING, PROVIDE MEANS FOR REMOVAL SO THAT HARMFUL EFFECTS TO OTHER CONSTRUCTION AND TO EARTH SURFACES WILL BE MINIMIZED. 2. WATERPROOF SHEET MATERIALS: THESE WILL BE PERMITTED FOR INITIAL CURING ONLY. USE LARGEST PRACTICAL SIZE SHEETS. LAP JOINTS NOT LESS THAN 4" AND SEAL CAREFULLY. ANCHOR COVERING SECURELY IN PLACE. 3. CURING COMPOUNDS: a. RESTRICTIONS ON USE: DO NOT USE CURING COMPOUND ON SURFACES OVER WHICH HOMOGENEOUS SHEET MATERIAL WILL BE APPLIED. FOR SURFACES TO RECEIVE OTHER FINISHES, SUBMIT WELL IN ADVANCE OF TIME FOR CURING APPLICATION, WRITTEN ACCEPTANCE OF CURING COMPOUND BY BOTH THE MANUFACTURER AND THE INSTALLER OF THE FINISH MATERIAL RELATIVE TO COMPATIBILITY THEREWITH OF FINISH MATERIAL, INCLUDING PRIMERS, ADHESIVES, AND SIMILAR MATERIALS. IF MANUFACTURER OF FINISH MATERIAL HAS NOT BEEN DETERMINED, GENERAL CONTRACTOR SHALL BE RESPONSIBLE FOR COORDINATING SUCH ACCEPTANCE. b. APPLICATION: APPLY UNIFORMLY AT A COVERAGE RATE NOT LESS THAN THAT STATED BY MANUFACTURER WHICH MEETS ASTM C309 MOISTURE RETENTION REQUIREMENT (0.55 KILOGRAM/SQ. METER/72 HR.).		
L																		
K																		
J																		
H																		
G																		
F																		
E																		
D																		
C																		
B																		
A																		
	1	2	3	4	5	6	7	8	9	10	11	12	13	14	15			

	1	2	3	4	5	6	7	8	9	10	11	12	13	14	15																											
M	SECTION 08330 - OVERHEAD DOOR			SECTION 09260 - GYPSUM BOARD SYSTEMS			a. ON WALLS AND PARTITIONS, PLAN INSTALLATION SO THAT LEADING EDGE OR END OF GWB OR CBB IS ATTACHED TO OPEN END OF STUD FLANGE FIRST.			RESILIENT PRODUCTS AND SUBSTRATE CONDITIONS INDICATED. RESILIENT EDGE STRIPS: 1/8" VINYL OR RUBBER WITH BULL-NOSE EDGE NOT LESS THAN 1" WIDE, OF HEIGHT REQUIRED TO PROTECT EXPOSED EDGES OF TILES, AND IN MAXIMUM AVAILABLE LENGTHS TO MINIMIZE RUNNING JOINTS. SEALER AND WAX: TYPES RECOMMENDED BY FLOOR MATERIAL MANUFACTURER. PART 33 - EXECUTION 0.1. INSTALLATION A. LAY OUT TILES FROM CENTER MARKS ESTABLISHED WITH PRINCIPAL WALLS, DISCOUNTING MINOR OFFSETS, SO TILE WIDTHS AT OPPOSITE EDGES OF ROOM ARE EQUAL TO ONE ANOTHER AND ARE AT LEAST ONE-HALF OF A TILE. B. MATCH TILES FOR COLOR AND PATTERN BY SELECTING TILES FROM CARTONS IN SAME SEQUENCE AS MANUFACTURED AND PACKAGED. LAY TILES IN BASKET-WEAVE PATTERN WITH GRAIN DIRECTION ALTERNATING IN ADJACENT TILES. END OF SECTION 09651			B. FUNGICIDAL AGENT SHALL BE INCORPORATED INTO PAINT BY MANUFACTURER. 3.01 INSPECTION: A. VERIFY THAT SURFACES AND CONDITIONS ARE READY FOR WORK AS INSTRUCTED BY THE PROJECT MANUFACTURER. 3. EXAMINE SURFACES SCHEDULED TO BE FINISHED, PRIOR TO COMMENCEMENT OF WORK. C. REPORT ANY UNSATISFACTORY CONDITIONS IN WRITING TO THE CONTRACTOR.			6. APPLY ADDITIONAL COATS UNTIL DRY FILM IS OF UNIFORM FINISH, COLOR, AND APPEARANCE. ENSURE THAT ALL SURFACES RECEIVE A DRY FILM THICKNESS EQUIVALENT TO THOSE OF FLAT SURFACES. 8. COAT SURFACES BEHIND MOVABLE EQUIPMENT AND FURNITURE THE SAME AS SIMILAR EXPOSED SURFACES. 9. COAT SURFACES BEHIND PERMANENTLY FIXED EQUIPMENT OR FURNITURE WITH PRIME COAT ONLY, BEFORE FINAL INSTALLATION OF EQUIPMENT. 10. PAINT INTERIOR SURFACES OF DUCTS WHERE VISIBLE THROUGH REGISTERS OR GRILLES WITH A FLAT NON-SPECULAR BLACK PAINT. 11. COAT BACK SIDES OF ACCESS PANELS AND REMOVABLE OR HINGED COVERS TO MATCH EXPOSED SURFACES. 12. FINISH EXTERIOR DOORS ON TOP, BOTTOMS, AND SIDE EDGES THE SAME AS EXTERIOR FACES UNLESS OTHERWISE INDICATED. 13. SAND LIGHTLY BEFORE EACH SUCCEEDING ENAMEL OR VARNISH COAT. 3.10 SCHEDULING: A. APPLY FIRST COAT MATERIAL TO PREPARED SURFACES AS SOON AS PRACTICABLE AND BEFORE SURFACE DETERIORATION. B. APPLY SUCCESSIVE COATS WITHIN THE TIME LIMITS RECOMMENDED BY THE MANUFACTURER. 3.11 PRIME COATS: A. GENERAL: 1. APPLY PRIME COAT ON MATERIAL WHICH IS REQUIRED TO BE PAINTED OR FINISHED, AND WHICH HAS NOT BEEN PRIME COATED BY OTHERS. 2. OMIT BOTTOM COAT (PRIMER) ON METAL SURFACES WHICH HAVE BEEN SHOP-PRIMED, UNLESS OTHERWISE INDICATED. 3. TOUCH UP SHOP-APPLIED PRIME COATS WHEREVER DAMAGED OR BARE. CLEAN AND TOUCH UP WITH SAME TYPE SHOP PRIMER. 4. PRIMERS FOR WOOD AND WOOD PRODUCTS: 5. PRIME, STAIN OR SEAL WOOD REQUIRED TO BE FIELD COATED IMMEDIATELY UPON DELIVERY TO PROJECT SITE. 6. PRIME ALL SURFACES OF INTERIOR WOOD, INCLUDING EDGES, ENDS, FACES, UNDERSIDES, AND BACK SIDES. 3.12 FINISH COATS: A. GENERAL 1. APPLY NOT LESS THAN THE NUMBER OF COATS INDICATED. 2. APPLY MATERIALS AT RATE TO ESTABLISH A TOTAL DRY FILM THICKNESS AS INDICATED OR, IF NOT INDICATED, AS RECOMMENDED BY COATING MANUFACTURER. 3. APPLY ADDITIONAL COATS AT NO ADDITIONAL COST TO THE OWNER WHEN NECESSARY TO ACHIEVE COMPLETE HIDING, UNIFORM TEXTURE, OR UNIFORM SHEEN AND APPEARANCE. 4. APPLY BLOCK FILLERS USING MANUFACTURER'S RECOMMENDED APPLICATION TECHNIQUES AND ACHIEVING A PIN-HOLE FREE SURFACE. 3.13 COMPLETED WORK: A. MATCH APPROVED SAMPLES FOR COLOR, TEXTURE, AND COVERAGE. B. REMOVE, REFINISH, OR REPAINT WORK AS DIRECTED BY THE OWNER WHEN WORK IS NOT IN COMPLIANCE WITH SPECIFIED REQUIREMENTS. 3.14 CLEANING AND PROTECTION: A. CLEANING: 1. DURING PROGRESS OF WORK, REMOVE FROM SITE DISCARDED MATERIALS, RUBBISH, CANS, AND RAGS AT END OF EACH WORK DAY. 2. UPON COMPLETION OF PAINTING WORK, CLEAN WINDOW GLASS AND OTHER PAINT-SPATTERED SURFACES. B. PROTECTION 1. PROTECT WORK OF OTHER TRADES AGAINST DAMAGE BY PAINTING AND FINISHING WORK. 2. CORRECT ANY DAMAGE TO THE OWNER'S SATISFACTION. 3. PROVIDE "WET PAINT" SIGNS AS REQUIRED TO PROTECT NEWLY COATED FINISHES. 4. REMOVE TEMPORARY PROTECTIVE WRAPPINGS PROVIDED BY OTHERS FOR PROTECTION OF THEIR WORK, AFTER COMPLETION OF PAINTING OPERATIONS. 5. AT COMPLETION OF WORK OF OTHER TRADES, TOUCH UP AND RESTORE ALL DAMAGED OR DEFACED COATED SURFACES. 3.15 STANDARD OF COMPARISON: A. PRODUCTS SPECIFIED, UNLESS OTHERWISE INDICATED, ARE AS MANUFACTURED BY SHERWIN WILLIAMS, CO. (S.W.). SIMILAR PRODUCTS OF ACCEPTABLE MANUFACTURERS LISTED MAY BE FURNISHED IN PLACE OF THOSE LISTED. B. METAL: GALVANIZED (GLOSS) 1. PRIMER: GALVITE HS-BOWZ30 B. METAL: FACTORY PRIMED (GLOSS) 3.17 INTERIOR PAINT SCHEDULE A. GYPSUM WALL BOARD & WOOD (FLAT) 1. PRIMER: PREP-RITE 200 INTERIOR LATEX WALL PRIMER 2. SECOND AND THIRD COATS: PROMAR 200 INTERIOR LATEX SEMI-GLOSS ENAMEL C. METAL: FACTORY PRIMED (EGG-SHELL) 1. SECOND AND THIRD COATS: PROMAR 200 INTERIOR LATEX SEMI-GLOSS ENAMEL D. METAL: FACTORY PRIMED (SEMI-GLOSS) 1. SECOND & THIRD COATS: POMAR 200 INTERIOR LATEX SEMI-GLOSS ENAMEL E. IF COLOR OR FINISH IS NOT DESIGNATED, THE OWNER OR OWNERS' REPRESENTATIVE WILL SELECT THESE FROM STANDARD COLORS OR FINISH AVAILABLE. END OF SECTION 9900			SECTION 10800 - TOILET & BATH ACCESSORIES																							
L	ACCEPTABLE MANUFACTURERROLLING SERVICE DOORS SHALL BE DURACOIL STANDARD AS MANUFACTURED BY RAYNOR OF DIXON, ILLINOIS. OPERATION A: OPERATION TYPE: ROLLING SERVICE DOORS SHALL BE OPERATED. 1.4. MOTOR: AS OPTIONALLY-PROVIDED BY MEANS OF A RAYNOR POWERHOIST JACK-SHAFT TYPE ELECTRIC OPERATOR (SPECIFIED SEPARATELY). DRIVE ORIENTATION: FOR HAND-CHAIN, HAND-CRANK OR MOTOR OPERATED SERVICE DOORS, THE DRIVE SHALL BE ORIENTED RIGHT-HAND CURTAIN A. MATERIAL: THE CURTAIN SHALL CONSIST OF INTERLOCKING STEEL SLATS ROLL-FORMED FROM COMMERCIAL QUALITY HOT-DIPPED GALVANIZED (G-90) STEEL PER ASTM A-653. STEEL GAUGE THICKNESS SHALL BE 1.22 GAUGE: AS NORMALLY-PROVIDED, DOORS SHALL BE PROVIDED WITH 22 GAUGE (.030 MINIMUM STEEL THICKNESS) STEEL, OR DEPENDING ON SIZE, SOME DOORS MAY REQUIRE 20 GAUGE (.036 MINIMUM STEEL THICKNESS) STEEL.B. SLAT TYPE: THE CURTAIN SLAT CONFIGURATION SHALL CONSIST OF 1. FLAT SLAT: AS NORMALLY-PROVIDED, SUITABLE FOR ALL DOOR SIZES.FINISH/COLOR: THE CURTAIN SHALL BE FINISHED IN : GRAY: AS NORMALLY-PROVIDED, ONE COAT WHITE EPOXY PRIMER AND ONE TOP COAT OF GRAY POLYESTER PAINT. ENDLOCKS: LATERAL MOVEMENT OF THE SLATS TO BE CONTAINED BY MEANS OF ZINC-PLATED MALLEABLE CAST-IRON ENDLOCKS FASTENED WITH TWO ZINC- PLATED STEEL RIVETS.E. BOTTOM BAR AND SEAL: BOTTOM BAR SHALL BE TWO ROLL-FORMED GALVANIZED STEEL ANGLES, MINIMUM 1 1/2" X 1 1/2" X 1/8" (38.1 MM X 38.1 MM X 3.2 MM). BOTTOM ASTRAGAL SHALL BE SINGLE-CONTACT TYPE. STRUCTURAL ANGLE BOTTOM BAR SHALL RECEIVE ONE COAT OF RUST-INHIBITIVE PRIMER. GUIDES A. GUIDE ASSEMBLIES: GUIDE ASSEMBLIES SHALL CONSIST OF THREE STRUCTURAL STEEL ANGLES, MINIMUM 3" X 2" X 3/16" (76 MM X 51 MM X 4.8 MM) AND FITTED WITH REMOVABLE CURTAIN STOPPS. STEEL GUIDES SHALL RECEIVE ONE COAT OF RUST INHIBITIVE PRIMER. JAMBS CONSTRUCTIVE DOOR SHALL BE MOUNTED TO (SELECT FROM LIST BELOW): 1. STEEL JAMBS: AS NORMALLY-PROVIDED, AND SUPPLIED WITH SELF-TAPPING FASTENER. (DELETE THIS SECTION IF NOT APPLICABLE).			PART 1 - GENERAL 1.01 REFERENCES A. ASTM A 446/A446M-89-- STANDARD SPECIFICATION FOR STEEL SHEET, ZINC-COATED (GALVANIZED) BY THE HOT-DIP METHOD: 1989. B. ASTM A 641-89-- STANDARD SPECIFICATION FOR ZINC-COATED (GALVANIZED)CARBON STEEL WIRE - 1989. C. ASTM A 792-89-- STANDARD SPECIFICATION FOR STEEL SHEET, ALUMINUM-ZINC ALLOY-COATED BY THE HOT-DIP METHOD - 1989. D. ASTM C 36-90 -STANDARD SPECIFICATION FOR GYPSUM WALLBOARD 1990. E. ASTM C 475-89 -- STANDARD SPECIFICATION FOR JOINT COMPOUND AND JOINT TAPE FOR FINISHING GYPSUM BOARD- 1989. F. ASTM C 630-90 - STANDARD SPECIFICATION FOR WATER-RESISTANT GYPSUM BACKING BOARD - 1990. G. GA-600-88 FIRE RESISTANCE DESIGN MANUAL- GYPSUM ASSOCIATION1988. H. GYPSUM CONSTRUCTION HANDBOOK - USG CORPORATION - 1987. 1.02 SYSTEM DESCRIPTION A. SOUND-RATED CONSTRUCTION: WHERE INDICATED, PROVIDE CONSTRUCTION BUILT IN ACCORDANCE WITH MANUFACTURER'S ASSEMBLIES WHICH HAVE BEEN LABORATORY-TESTED PER ASTM E 90 FOR DESIGNATED STC RATINGS. STC RATINGS: AS INDICATED ON DRAWINGS. B. FIRE RESISTANCE VALUES: WHERE INDICATED, PROVIDE CONSTRUCTION BUILT IN ACCORDANCE WITH UL AND/OR FM DESIGN PARAMETERS, FOR THE HOURLY RATING NOTED. 1.03 QUALITY ASSURANCE A. REGULATORY REQUIREMENTS: AT LOCATIONS INDICATED ON DRAWINGS, PROVIDE FIRE-RATED ASSEMBLIES TESTED IN ACCORDANCE WITH ASTM E 119 and ACCEPTABLE TO AUTHORITIES FOR RATINGS REQUIRED. PROVIDE ASSEMBLIES AS LISTED IN THE FOLLOWING: 1. GA-600,"FIRE RESISTANCE DESIGN MANUAL." 2. UNDERWRITERS LABORATORIES INC.'S (UL) "FIRE RESISTANCE DIRECTORY." 1.04 DELIVERY, STORAGE, AND HANDLING A. DELIVER MATERIALS IN ORIGINAL AND UNOPENED PACKAGES, CONTAINERS, OR BUNDLES, WITH BRAND, NAMES AND MANUFACTURER'S LABELS INTACT AND LEGIBLE. STORE MATERIALS IN DRY LOCATION, FULLY PROTECTED FROM WEATHER AND DIRECT EXPOSURE TO SUNLIGHT. B. STACK GYPSUM BOARD PRODUCTS F LAT AND LEVEL, PROPERLY SUPPORTED TO PREVENT SAGGING OR DAMAGE TO ENDS AND EDGES. C. STORE CORNER BEAD AND OTHER METAL AND PLASTIC ACCESSORIES TO PREVENT BENDING, SAGGING, DISTORTION, OR OTHER MECHANICAL DAMAGE.			3.02 INSTALLATION OF TRIM AND ACCESSORIES A. GENERAL: COMPLY WITH MANUFACTURER'S RECOMMENDATIONS FOR INSTALLATION OF TRIM ITEMS. EXCEPT FOR ITEMS INTENDED BY MANUFACTURER TO BE LEFT EXPOSED OR SEMIEXPOSED, INSTALL TRIM UNITS FOR CONCEALMENT IN JOINT F INISHING COMPOUND. WHEREVER POSSIBLE, FASTEN METAL TRIM ITEMS TO SUBSTRATE WITH SAME FASTENERS USED TO INSTALL GYPSUM BOARD PRODUCTS. 1. CORNER BEAD: INSTALL METAL CORNER BEAD AT ALL EXTERNAL CORNERS UNLESS DETAILS CLEARLY INDICATE ITS OMISSION AT SPECIFIC LOCATIONS. 2. EDGE TRIM: INSTALL EDGE TRIM AT LOCATIONS INDICATED AND WHEREVER EDGE OF GYPSUM BOARD OTHERWISE WOULD BE EXPOSED. 3. CONTROL JOINTS: INSTALL ONE-PIECE CONTROL JOINTS AT REQUIRED LOCATIONS. DO NOT REMOVE TAPE UNTIL FINISHING OPERATIONS ARE COMPLETE. 3.03 FINISHING A. GENERAL: COMPLY WITH ASTM C 840 AND GA-216 EXCEPT WHERE EXCEEDED BY OTHER REQUIREMENTS. 1. DO NOT MIX JOINT COMPOUNDS EXCEPT AS SPECIFICALLY RECOMMENDED BY MANUFACTURER. B. FINISH GYPSUM BOARD IN ACCORDANCE WITH THE FOLLOWING LEVEL OF FINISH, EXCEPT WHERE INDICATED OTHERWISE ON THE DRAWINGS: 1. LEVEL 4: EMBED TAPE IN JOINT COMPOUND AT ALL JOINTS AND INTERIOR ANGLES. PROVIDE THREE SEPARATE COATS OF COMPOUND AT ALL JOINTS, ANGLES, FASTENER HEADS, AND ACCESSORIES. PROVIDE SMOOTH SURFACES FREE OF TOOL MARKS AND RIDGES. C. JOINT TREATMENT: TAPE AND FINISH JOINTS IN ACCORDANCE WITH MANUFACTURER'S INSTRUCTIONS FOR COMPOUNDS USED, USING PROPER TOOLS DESIGNED FOR THE PURPOSE. 1. AVOID RAISING NAP OF FACE PAPER WHEN SANDING- CAREFULLY SPONGE DOWN ANY AREAS ROUGHENED BY SANDING PROCESS. 2. PARTICULAR CARE SHALL BE TAKEN IN ALL TAPING AND FINISHING OPERATIONS TO ENSURE INVISIBILITY OF JOINTS AND PATCHING. D. PENETRATIONS: FILL CUTOUTS AND OPENINGS AROUND FIXTURES AND PENETRATIONS WITH JOINT COMPOUND. 3.04 CLEANING A. PROMPTLY REMOVE ANY RESIDUAL GYPSUM DRYWALL MATERIALS FROM CORNER OR ADJOINING SURFACES, LEAVING SPACES READY FOR SUBSEQUENT FINISHINGOPERATIONS AND DECORATING. END OF SECTION 09260			B. CERTIFICATION THAT EACH PRODUCT MEETS OR EXCEEDS VOC AND OTHER ENVIRONMENTAL STANDARDS PER FEDERAL AND LOCAL LAW, AND THE LAWS OF THE STATE IN WHICH THE PROJECT IS BEING BUILT. C. EQUIVALENCY CHART: CONTRACTORS PROPOSING TO USE A MANUFACTURER NOT LISTED HEREIN SHALL SUBMIT A TABULAR SUMMARY OF EACH PRODUCT BEING PROPOSED COMPARED TO COMPARABLE PRODUCTS AS MANUFACTURED BY BENJAMIN MOORE. 1.04 SINGLE SOURCE RESPONSIBILITY: A. ALL MATERIALS REQUIRED BY THIS SECTION SHALL BE PROVIDED BY A SINGLE MANUFACTURER, UNLESS OTHERWISE REQUIRED OR APPROVED. B. APPLICATION: FIRM WITH NOT LESS THAN 3 YEARS OF SUCCESSFUL EXPERIENCE IN PAINTING WORK SIMILAR IN SCOPE TO WORK OF THIS PROJECT. 1.05 MAINTAIN THROUGHOUT DURATION OF THE WORK A CREW OF PAINTERS WHO ARE FULLY QUALIFIED TO SATISFY REQUIREMENTS OF THE SPECIFICATIONS. 1.06 DELIVERY, STORAGE, AND HANDLING: A. REGARDLESS OF THE MANUFACTURER BEING USED, ALL PAINT MATERIALS SHALL BE PURCHASED IN THE STATE WHERE THE PROJECT IS BEING BUILT. B. DELIVERY: DELIVERY MATERIALS TO PROJECT SITE IN ORIGINAL, NEW UNOPENED PACKAGES AND CONTAINER BEARING THE MANUFACTURER'S NAME AND LABEL AND THE FOLLOWING INFORMATION. 1. NAME OF TITLE OF MATERIAL 2. MANUFACTURER'S STOCK NUMBER AND DATE OF MANUFACTURE. 3. MANUFACTURER'S NAME. 4. CONTENTS BY VOLUME FOR MAJOR PIGMENT AND VEHICLE CONSTITUENTS. 5. THINNING INSTRUCTIONS. 6. APPLICATION INSTRUCTIONS. 7. COLOR NAME AND NUMBER. C. STORE MATERIALS IN TIGHTLY COVERED CONTAINERS. D. MAINTAIN CONTAINERS IN A CLEAN CONDITION, FREE OF FOREIGN MATERIAL AND RESIDUE. STORE MATERIALS AT AMBIENT TEMPERATURE OF BETWEEN 45 DEGREES F MINIMUM AND 90 DEGREES F MAXIMUM. IN A WELL-VENTILATED AREA. ENSURE THAT STORAGE IS NEAT AND ORDERLY. REMOVE OILY RAGS AND WASTE DAILY. E. TAKE PRECAUTIONARY MEASURES TO PREVENT FIRE AND HEALTH HAZARDS. 1.07 ENVIRONMENTAL REQUIREMENTS: A. APPLY WATER-BASED COATINGS ONLY WHEN TEMPERATURE OF SURFACES TO BE COATED AND SURROUNDING AIR TEMPERATURES ARE BETWEEN 50 DEGREES F AND 90 DEGREES F. B. APPLY SOLVENT-THINNED COATINGS ONLY WHEN TEMPERATURE OF SURFACES TO BE COATED AND SURROUNDING AIR TEMPERATURES ARE C. DO NOT APPLY COATINGS IN SNOW, RAIN, FOG, OR MIST, OR WHEN RELATIVE HUMIDITY EXCEEDS 85 PERCENT, OR TO DAMP, DEW-LADEN, OR WET SURFACES. BETWEEN 45 DEGREES F AND 95 DEGREES F. D. APPLICATION MAY BE CONTINUED DURING INCLEMENT WEATHER IF AREAS AND SURFACES TO BE COATED ARE ENCLOSED AND HEATED TO TEMPERATURES WITHIN MANUFACTURER'S SPECIFIED LIMITS DURING AMBIENT TEMPERATURES ABOVE 45 DEGREES F FOR 24 HOURS BEFORE, DURING APPLICATION AND DRYING PERIODS. E. PROVIDE LIGHTING LEVEL OF AT LEAST 80 FOOTCANDLES MEASURED MID-HEIGHT AT SUBSTRATE SURFACE. F. PROVIDE CONTINUOUS VENTILATION AND HEATING TO PREVENT ACCUMULATION OF HAZARDOUS FUMES AND TO MAINTAIN SURFACE AND AIR FOR 48 HOURS AFTER APPLICATION OF FINISHES. 1.08 COORDINATION: A. GENERAL: PERFORM WORK IN PROPER SEQUENCE WITH WORK OF OTHER TRADES TO AVOID DAMAGE TO FINISHED WORK. B. PRIMERS: PROVIDE FINISH COATS WHICH ARE COMPATIBLE WITH PRIME COATS USED. REVIEW OTHER SECTIONS OF THESE SPECIFICATIONS IN WHICH PRIME COATS ARE TO BE PROVIDED, TO ENSURE COMPATIBILITY OF TOTAL COATINGS SYSTEM FOR VARIOUS SUBSTRATES. C. UPON REQUEST, FURNISH INFORMATION TO OTHER TRADES ON CHARACTERISTICS OF FINISH MATERIALS PROPOSED FOR USE. PROVIDE BARRIER COATS OVER INCOMPATIBLE PRIMERS, OR REMOVE OR RE-PRIME AS REQUIRED. NOTIFY THE ARCHITECT IN WRITING OF ANY ANTICIPATED PROBLEMS USING SPECIFIED COATING SYSTEMS WITH SUBSTRATES PRIMED BY OTHERS. PART 2 - MATERIALS 1.01 ACCEPTABLE MANUFACTURERS: 1. EXCEPT AS OTHERWISE SPECIFIED, MATERIALS SHALL BE THE PRODUCTS OF THE FOLLOWING MANUFACTURERS: A. GILDEN B. SHERWIN WILLIAMS, CO. (SPECIFIED) C. BENJAMIN MOORE 2.02 MATERIALS SELECTED FOR COATING SYSTEMS FOR EACH TYPE SURFACE SHALL BE THE PRODUCT OF A SINGLE MANUFACTURER. 2.03 MIXING AND TINTING: A. DELIVER PAINTS AND ENAMELS READY-MIXED TO JOB SITE. ADHESIVES: WATER-RESISTANT TYPE RECOMMENDED BY MANUFACTURER TO SUIT			SECTION 09653 - RESILIENT WALL BASE AND ACCESSORIES																													
K	PART 2 - MATERIALS 2.01 MATERIALS A. PROVIDE MANUFACTURER'S STANDARD INSULATION PRODUCTS, AS INDICATED ON DRAWINGS. 1. THICKNESSES OR "R" VALUES OF INSULATION ARE INDICATED ON DRAWINGS. B. GLASS FIBER C. BLANKET/BATT INSULATION: WHERE INSTALLATION OF BLANKET/BATT INSULATION IS INDICATED, COMPLYING WITH REQUIREMENTS BELOW. 1. FOIL-SCRIM-KRAFT FACED BLANKET/BATT: TYPE III, CLASS A (ASTM C 665). BLANKET/BATT EXCLUSIVE OF FACING MUST PASS ASTM E 1306 COMBUSTION TEST REQUIREMENTS. 2. ROOF INSULATION TO BE VINYL SCRIM FACED BLANKET INSULATION 4" THICK FIBERGLASS, U.L. RATED 3. WALL INSULATION TO BE VINYL SCRIM FACED BLANKET INSULATION FULL THICK FIBERGLASS, U.L. RATED 4. ALL CEILING INSULATION TO BE FACED BLANKET INSULATION 6" THICK FIBERGLASS, U.L. RATED 5. ALL WALL INSULATION TO BE FACED BLANKET INSULATION FULL THICKNESS OF WALL AND FULL WITH BETWEEN THE STUDS TO FILL CAVITY. 3.02 PREPARATION A. CLEAN SUBSTRATES OF ANY SUBSTANCES WHICH MIGHT DAMAGE MATERIALS TO BE INSTALLED. 3.03 INSTALLATION A. DO NOT INSTALL INSULATION WHICH IS DAMAGES, WET, SOILED, OR WHICH HAS BEEN COVERED AT ANY TIME WITH ICE OR SNOW. B. COMPLY WITH INSULATION MANUFACTURER'S RECOMMENDATIONS AND INSTALLATION SEQUENCE. PROVIDE PERMANENT PLACEMENT AND SUPPORT OF INSULATION. C. INSTALL MATERIALS IN A MANNER WHICH WILL MAXIMIZE CONTINUITY OF THERMAL ENVELOPE. USE A SINGLE LAYER OF INSULATION WHEREVER POSSIBLE TO ACHIEVE INDICATED REQUIREMENTS, UNLESS OTHERWISE INDICATED. D. VAPOR BARRIER COMPLY WITH MEMBRANE MANUFACTURER'S RECOMMENDATIONS FOR INSTALLATION OF MEMBRANE AS VAPOR BARRIER IN APPLICATION INDICATED.			PART 3 - EXECUTION 3.01 INSTALLATION OF GYPSUM BOARD (GWB) A. GENERAL: COMPLY WITH ASTM C 840 AND GA-216 EXCEPT WHERE EXCEEDED BY OTHER REQUIREMENTS. 1. WHEREVER POSSIBLE, INSTALL GWB OR CBB TO MINIMIZE BUTT END JOINTS. 2. APPLY CEILING BOARDS PRIOR TO INSTALATION OF WALLBOARDS. ARRANGE TO MINIMIZE BUTT END JOINTS NEAR CENTER OF CEILING AREA. 3. INSTALL WALLBOARDS IN A MANNER WHICH WILL MINIMIZE BUTT END JOINTS IN CENTER OF WALL AREA. STAGGER VERTICAL JOINTS ON OPPOSITE SIDES OF WALLS. 4. BUTT ALL JOINTS LOOSELY, WITH MAXIMUM OF 1/16 INCH BETWEEN BOARDS. 5. PLACE WRAPPED EDGES ADJACENT TO ONE ANOTHER; DO NOT PLACE CUT EDGES OR BUTT ENDS ADJACENT TO WRAPPED EDGES. 6. SUPPORT ALL EDGES AND ENDS OF EACH BOARD ON FRAMING OR BY SOLID SUBSTRATE, EXCEPT THAT LONG EDGES AT RIGHT ANGLES TO FRAMING MEMBERS IN NON-FIRE-RATED CONSTRUCTION MAY BE LEFT UNSUPPORTED. 7. IN DOUBLE-LAYER CEILING WORK, APPLY BASE LAYER WITH LONG EDGES PERPENDICULAR TO FRAMING MEMBERS, WITH FACE LAYER IN OPPOSITE DIRECTION, AND WITH ALL JOINTS OFFSET. 8. IN DOUBLE-LAYER WALL APPLICATIONS, APPLY BASE LAYER WITH LONG EDGES PARALLEL TO FRAMING MEMBERS, WITH FACE LAYER IN OPPOSITE DIRECTION, AND WITH ALL JOINTS OFFSET. B. CONTROL JOINTS: FORM CONTROL JOINTS BY MEANS OF 1/4-INCH SPACE BETWEEN ADJACENT GWB OR CBB, WITH EACH EDGE SUPPORTED ON SEPARATE FRAMING MEMBER, READY TO RECEIVE TRIM ACCESSORY, AND LOCATED AS SHOWN ON THE DRAWINGS AND AS FOLLOWS: 1. NOT MORE THAN 30 FEET APART ON WALLS WHICH ARE NOT INTERSECTED BY OTHER WALLS FOR 50 FEET OR MORE. 2. AT EXTERIOR SOFFITS, NOT MORE THAN 30 FEET APART IN BOTH DIRECTIONS. C. SOUND-RATED CONSTRUCTION: SEAL PERIMETER OF CONSTRUCTION WITH ACOUSTICAL SEALANT, COMPLYING WITH ASTM C 919. CAREFULLY SEAL AROUND PENETRATIONS AND AT CONTROL JOINTS AND OTHER OPENINGS. 1. AT PARTITIONS SHOWN OR WHERE REQUIRED FOR STC RATINGS INDICATED, INSTALL CELBAR SPRAY ON INSULATION AFTER GWB OR CBB HAS BEEN INSTALLED ON ONE SIDE. D. INSTALLATION ON WOOD OR METAL METAL FRAMING AS INDICATED: 1. SINGLE-LAYER APPLICATION: INSTALL GWB OR CBB BY MEANS OF SCREW ATTACHMENT.			SECTION 09651 - RESILIENT TILE FLOORING																																			
J	SECTION 09512 - ACOUSTICAL TILE CEILINGS			PART 1 - GENERAL 0.1 A. PART 2 - PRODUCTS 0.1 A. B. 28 - GENERAL SECTION REQUIREMENTS' SUBMITTALS: COMPLY WITH SECTION 1300. PRODUCT DATA AND MATERIAL SAMPLES. ACOUSTICAL TILE CEILINGS: ASTM E 1264 FOR CLASS A MATERIALS, TESTED PER ASTM E 84. FIRE-RATING CEILING ASSEMBLIES: ASTM E 119 AND LISTED IN UL'S "FIRE RESISTANCE DIRECTORY," IN ITS'S "CERTIFICATION LISTINGS," OR IN THE LISTING OF ANOTHER QUALIFIED TESTING AND INSPECTING AGENCY. 29 - PRODUCTS ACOUSTICAL TILE MATERIAL SHALL BE CLASS A FLAME RESISTANT, CLASS 1 FLAME SPREAD, MINIMUM MRC .55, STC 35, BY ARMSTRONG CORK COMPANY, OR OWNER APPROVED ALTERNATE AND SHALL BE INSTALLED IN ACCORDANCE WITH PROVISIONS OF ASTM C 635-87 AND ASTM C 636-8. ACOUSTICAL PANELS: TYPE B: ARMSTRONG "CORTEGA #769", CONFORMING TO THE FOLLOWING: 1. SIZE: 24"x48" 2. THICKNESS: 5/8" 3. SURFACE FINISH: PERFORATED AND NON-DIRECTIONAL FISSURE. 0.1 A. B. C. 0.1 A. B.			PART 31 - GENERAL 0.1 A. SECTION REQUIREMENTS' SUBMITTALS: COMPLY WITH SECTION 1300. PRODUCT DATA AND COLOR SAMPLES. EXTRA MATERIALS: DELIVER TO OWNER AT LEAST 1 BOX FOR EACH 50 BOXES OR FRACTION THEREOF, OF EACH TYPE AND COLOR OF RESILIENT FLOOR TILE INSTALLED. PART 32 - PRODUCTS 0.1 A. C. D. E. F. G. C. D. E. F. VINYL COMPOSITION FLOOR TILE VCT-1 MANNINGTON 1. COLOR AND PATTERN: "ESSENTIALS" COLOR 143 FLAX WITH COLOR 105 ACCENT. ASTM F 1066, CLASS 2 (THROUGH-PATTERN TILE). WEARING SURFACE: EMBOSSED. THICKNESS: 1/8 INCH SIZE: 12 BY 12 INCHES NFPA 101, "LIFE SAFETY CODE," REQUIRES THAT FLOOR COVERING MATERIALS IN EXITS AND IN ACCESS TO EXITS MEET CRITICAL RADIANT FLUX LIMITATIONS IN CERTAIN OCCUPANCIES. AUTHORITIES HAVING JURISDICTION MAY IMPOSE OTHER RESTRICTIONS. DELETE BELOW IF NOT APPLICABLE. CRITICAL RADIANT FLUX CLASSIFICATION: CLASS 1, NOT LESS THAN 0.45 W/SQ. CM PER ASTM E 648. INSTALLATION ACCESSORIES RUBBER COVE BASE: SHALL BE 4" RUBBER BASE AS MANUFACTURED BY FLEXXO WALLFLOWERS OR APPROVED EQUAL. CONFORM TO FEDERAL SPECIFICATION SS-46-40-00, TYPE 1. PROVIDE LONGEST LENGTHS AVAILABLE AND FURNISH PRE-MANUFACTURED CORNER PIECES. TROWELABLE LEVELING AND PATCHING COMPOUNDS: LATEX-MODIFIED, PORTLAND CEMENT- OR BLENDED HYDRAULIC CEMENT-BASED FORMULATION PROVIDED OR APPROVED BY FLOORING MANUFACTURER FOR APPLICATIONS INDICATED. ADHESIVES: WATER-RESISTANT TYPE RECOMMENDED BY MANUFACTURER TO SUIT			PART 32 - PRODUCTS 0.1 A. C. D. E. F. VINYL COMPOSITION FLOOR TILE VCT-1 MANNINGTON 1. COLOR AND PATTERN: "ESSENTIALS" COLOR 143 FLAX WITH COLOR 105 ACCENT. ASTM F 1066, CLASS 2 (THROUGH-PATTERN TILE). WEARING SURFACE: EMBOSSED. THICKNESS: 1/8 INCH SIZE: 12 BY 12 INCHES NFPA 101, "LIFE SAFETY CODE," REQUIRES THAT FLOOR COVERING MATERIALS IN EXITS AND IN ACCESS TO EXITS MEET CRITICAL RADIANT FLUX LIMITATIONS IN CERTAIN OCCUPANCIES. AUTHORITIES HAVING JURISDICTION MAY IMPOSE OTHER RESTRICTIONS. DELETE BELOW IF NOT APPLICABLE. CRITICAL RADIANT FLUX CLASSIFICATION: CLASS 1, NOT LESS THAN 0.45 W/SQ. CM PER ASTM E 648. INSTALLATION ACCESSORIES RUBBER COVE BASE: SHALL BE 4" RUBBER BASE AS MANUFACTURED BY FLEXXO WALLFLOWERS OR APPROVED EQUAL. CONFORM TO FEDERAL SPECIFICATION SS-46-40-00, TYPE 1. PROVIDE LONGEST LENGTHS AVAILABLE AND FURNISH PRE-MANUFACTURED CORNER PIECES. TROWELABLE LEVELING AND PATCHING COMPOUNDS: LATEX-MODIFIED, PORTLAND CEMENT- OR BLENDED HYDRAULIC CEMENT-BASED FORMULATION PROVIDED OR APPROVED BY FLOORING MANUFACTURER FOR APPLICATIONS INDICATED. ADHESIVES: WATER-RESISTANT TYPE RECOMMENDED BY MANUFACTURER TO SUIT			PART 32 - PRODUCTS 0.1 A. C. D. E. F. VINYL COMPOSITION FLOOR TILE VCT-1 MANNINGTON 1. COLOR AND PATTERN: "ESSENTIALS" COLOR 143 FLAX WITH COLOR 105 ACCENT. ASTM F 1066, CLASS 2 (THROUGH-PATTERN TILE). WEARING SURFACE: EMBOSSED. THICKNESS: 1/8 INCH SIZE: 12 BY 12 INCHES NFPA 101, "LIFE SAFETY CODE," REQUIRES THAT FLOOR COVERING MATERIALS IN EXITS AND IN ACCESS TO EXITS MEET CRITICAL RADIANT FLUX LIMITATIONS IN CERTAIN OCCUPANCIES. AUTHORITIES HAVING JURISDICTION MAY IMPOSE OTHER RESTRICTIONS. DELETE BELOW IF NOT APPLICABLE. CRITICAL RADIANT FLUX CLASSIFICATION: CLASS 1, NOT LESS THAN 0.45 W/SQ. CM PER ASTM E 648. INSTALLATION ACCESSORIES RUBBER COVE BASE: SHALL BE 4" RUBBER BASE AS MANUFACTURED BY FLEXXO WALLFLOWERS OR APPROVED EQUAL. CONFORM TO FEDERAL SPECIFICATION SS-46-40-00, TYPE 1. PROVIDE LONGEST LENGTHS AVAILABLE AND FURNISH PRE-MANUFACTURED CORNER PIECES. TROWELABLE LEVELING AND PATCHING COMPOUNDS: LATEX-MODIFIED, PORTLAND CEMENT- OR BLENDED HYDRAULIC CEMENT-BASED FORMULATION PROVIDED OR APPROVED BY FLOORING MANUFACTURER FOR APPLICATIONS INDICATED. ADHESIVES: WATER-RESISTANT TYPE RECOMMENDED BY MANUFACTURER TO SUIT			PART 32 - PRODUCTS 0.1 A. C. D. E. F. VINYL COMPOSITION FLOOR TILE VCT-1 MANNINGTON 1. COLOR AND PATTERN: "ESSENTIALS" COLOR 143 FLAX WITH COLOR 105 ACCENT. ASTM F 1066, CLASS 2 (THROUGH-PATTERN TILE). WEARING SURFACE: EMBOSSED. THICKNESS: 1/8 INCH SIZE: 12 BY 12 INCHES NFPA 101, "LIFE SAFETY CODE," REQUIRES THAT FLOOR COVERING MATERIALS IN EXITS AND IN ACCESS TO EXITS MEET CRITICAL RADIANT FLUX LIMITATIONS IN CERTAIN OCCUPANCIES. AUTHORITIES HAVING JURISDICTION MAY IMPOSE OTHER RESTRICTIONS. DELETE BELOW IF NOT APPLICABLE. CRITICAL RADIANT FLUX CLASSIFICATION: CLASS 1, NOT LESS THAN 0.45 W/SQ. CM PER ASTM E 648. INSTALLATION ACCESSORIES RUBBER COVE BASE: SHALL BE 4" RUBBER BASE AS MANUFACTURED BY FLEXXO WALLFLOWERS OR APPROVED EQUAL. CONFORM TO FEDERAL SPECIFICATION SS-46-40-00, TYPE 1. PROVIDE LONGEST LENGTHS AVAILABLE AND FURNISH PRE-MANUFACTURED CORNER PIECES. TROWELABLE LEVELING AND PATCHING COMPOUNDS: LATEX-MODIFIED, PORTLAND CEMENT- OR BLENDED HYDRAULIC CEMENT-BASED FORMULATION PROVIDED OR APPROVED BY FLOORING MANUFACTURER FOR APPLICATIONS INDICATED. ADHESIVES: WATER-RESISTANT TYPE RECOMMENDED BY MANUFACTURER TO SUIT			PART 32 - PRODUCTS 0.1 A. C. D. E. F. VINYL COMPOSITION FLOOR TILE VCT-1 MANNINGTON 1. COLOR AND PATTERN: "ESSENTIALS" COLOR 143 FLAX WITH COLOR 105 ACCENT. ASTM F 1066, CLASS 2 (THROUGH-PATTERN TILE). WEARING SURFACE: EMBOSSED. THICKNESS: 1/8 INCH SIZE: 12 BY 12 INCHES NFPA 101, "LIFE SAFETY CODE," REQUIRES THAT FLOOR COVERING MATERIALS IN EXITS AND IN ACCESS TO EXITS MEET CRITICAL RADIANT FLUX LIMITATIONS IN CERTAIN OCCUPANCIES. AUTHORITIES HAVING JURISDICTION MAY IMPOSE OTHER RESTRICTIONS. DELETE BELOW IF NOT APPLICABLE. CRITICAL RADIANT FLUX CLASSIFICATION: CLASS 1, NOT LESS THAN 0.45 W/SQ. CM PER ASTM E 648. INSTALLATION ACCESSORIES RUBBER COVE BASE: SHALL BE 4" RUBBER BASE AS MANUFACTURED BY FLEXXO WALLFLOWERS OR APPROVED EQUAL. CONFORM TO FEDERAL SPECIFICATION SS-46-40-00, TYPE 1. PROVIDE LONGEST LENGTHS AVAILABLE AND FURNISH PRE-MANUFACTURED CORNER PIECES. TROWELABLE LEVELING AND PATCHING COMPOUNDS: LATEX-MODIFIED, PORTLAND CEMENT- OR BLENDED HYDRAULIC CEMENT-BASED FORMULATION PROVIDED OR APPROVED BY FLOORING MANUFACTURER FOR APPLICATIONS INDICATED. ADHESIVES: WATER-RESISTANT TYPE RECOMMENDED BY MANUFACTURER TO SUIT			PART 32 - PRODUCTS 0.1 A. C. D. E. F. VINYL COMPOSITION FLOOR TILE VCT-1 MANNINGTON 1. COLOR AND PATTERN: "ESSENTIALS" COLOR 143 FLAX WITH COLOR 105 ACCENT. ASTM F 1066, CLASS 2 (THROUGH-PATTERN TILE). WEARING SURFACE: EMBOSSED. THICKNESS: 1/8 INCH SIZE: 12 BY 12 INCHES NFPA 101, "LIFE SAFETY CODE," REQUIRES THAT FLOOR COVERING MATERIALS IN EXITS AND IN ACCESS TO EXITS MEET CRITICAL RADIANT FLUX LIMITATIONS IN CERTAIN OCCUPANCIES. AUTHORITIES HAVING JURISDICTION MAY IMPOSE OTHER RESTRICTIONS. DELETE BELOW IF NOT APPLICABLE. CRITICAL RADIANT FLUX CLASSIFICATION: CLASS 1, NOT LESS THAN 0.45 W/SQ. CM PER ASTM E 648. INSTALLATION ACCESSORIES RUBBER COVE BASE: SHALL BE 4" RUBBER BASE AS MANUFACTURED BY FLEXXO WALLFLOWERS OR APPROVED EQUAL. CONFORM TO FEDERAL SPECIFICATION SS-46-40-00, TYPE 1. PROVIDE LONGEST LENGTHS AVAILABLE AND FURNISH PRE-MANUFACTURED CORNER PIECES. TROWELABLE LEVELING AND PATCHING COMPOUNDS: LATEX-MODIFIED, PORTLAND CEMENT- OR BLENDED HYDRAULIC CEMENT-BASED FORMULATION PROVIDED OR APPROVED BY FLOORING MANUFACTURER FOR APPLICATIONS INDICATED. ADHESIVES: WATER-RESISTANT TYPE RECOMMENDED BY MANUFACTURER TO SUIT			PART 32 - PRODUCTS 0.1 A. C. D. E. F. VINYL COMPOSITION FLOOR TILE VCT-1 MANNINGTON 1. COLOR AND PATTERN: "ESSENTIALS" COLOR 143 FLAX WITH COLOR 105 ACCENT. ASTM F 1066, CLASS 2 (THROUGH-PATTERN TILE). WEARING SURFACE: EMBOSSED. THICKNESS: 1/8 INCH SIZE: 12 BY 12 INCHES NFPA 101, "LIFE SAFETY CODE," REQUIRES THAT FLOOR COVERING MATERIALS IN EXITS AND IN ACCESS TO EXITS MEET CRITICAL RADIANT FLUX LIMITATIONS IN CERTAIN OCCUPANCIES. AUTHORITIES HAVING JURISDICTION MAY IMPOSE OTHER RESTRICTIONS. DELETE BELOW IF NOT APPLICABLE. CRITICAL RADIANT FLUX CLASSIFICATION: CLASS 1, NOT LESS THAN 0.45 W/SQ. CM PER ASTM E 648. INSTALLATION ACCESSORIES RUBBER COVE BASE: SHALL BE 4" RUBBER BASE AS MANUFACTURED BY FLEXXO WALLFLOWERS OR APPROVED EQUAL. CONFORM TO FEDERAL SPECIFICATION SS-46-40-00, TYPE 1. PROVIDE LONGEST LENGTHS AVAILABLE AND FURNISH PRE-MANUFACTURED CORNER PIECES. TROWELABLE LEVELING AND PATCHING COMPOUNDS: LATEX-MODIFIED, PORTLAND CEMENT- OR BLENDED HYDRAULIC CEMENT-BASED FORMULATION PROVIDED OR APPROVED BY FLOORING MANUFACTURER FOR APPLICATIONS INDICATED. ADHESIVES: WATER-RESISTANT TYPE RECOMMENDED BY MANUFACTURER TO SUIT			PART 32 - PRODUCTS 0.1 A. C. D. E. F. VINYL COMPOSITION FLOOR TILE VCT-1 MANNINGTON 1. COLOR AND PATTERN: "ESSENTIALS" COLOR 143 FLAX WITH COLOR 105 ACCENT. ASTM F 1066, CLASS 2 (THROUGH-PATTERN TILE). WEARING SURFACE: EMBOSSED. THICKNESS: 1/8 INCH SIZE: 12 BY 12 INCHES NFPA 101, "LIFE SAFETY CODE," REQUIRES THAT FLOOR COVERING MATERIALS IN EXITS AND IN ACCESS TO EXITS MEET CRITICAL RADIANT FLUX LIMITATIONS IN CERTAIN OCCUPANCIES. AUTHORITIES HAVING JURISDICTION MAY IMPOSE OTHER RESTRICTIONS. DELETE BELOW IF NOT APPLICABLE. CRITICAL RADIANT FLUX CLASSIFICATION: CLASS 1, NOT LESS THAN 0.45 W/SQ. CM PER ASTM E 648. INSTALLATION ACCESSORIES RUBBER COVE BASE: SHALL BE 4" RUBBER BASE AS MANUFACTURED BY FLEXXO WALLFLOWERS OR APPROVED EQUAL. CONFORM TO FEDERAL SPECIFICATION SS-46-40-00, TYPE 1. PROVIDE LONGEST LENGTHS AVAILABLE AND FURNISH PRE-MANUFACTURED CORNER PIECES. TROWELABLE LEVELING AND PATCHING COMPOUNDS: LATEX-MODIFIED, PORTLAND CEMENT- OR BLENDED HYDRAULIC CEMENT-BASED FORMULATION PROVIDED OR APPROVED BY FLOORING MANUFACTURER FOR APPLICATIONS INDICATED. ADHESIVES: WATER-RESISTANT TYPE RECOMMENDED BY MANUFACTURER TO SUIT			PART 32 - PRODUCTS 0.1 A. C. D. E. F. VINYL COMPOSITION FLOOR TILE VCT-1 MANNINGTON 1. COLOR AND PATTERN: "ESSENTIALS" COLOR 143 FLAX WITH COLOR 105 ACCENT. ASTM F 1066, CLASS 2 (THROUGH-PATTERN TILE). WEARING SURFACE: EMBOSSED. THICKNESS: 1/8 INCH SIZE: 12 BY 12 INCHES NFPA 101, "LIFE SAFETY CODE," REQUIRES THAT FLOOR COVERING MATERIALS IN EXITS AND IN ACCESS TO EXITS MEET CRITICAL RADIANT FLUX LIMITATIONS IN CERTAIN OCCUPANCIES. AUTHORITIES HAVING JURISDICTION MAY IMPOSE OTHER RESTRICTIONS. DELETE BELOW IF NOT APPLICABLE. CRITICAL RADIANT FLUX CLASSIFICATION: CLASS 1, NOT LESS THAN 0.45 W/SQ. CM PER ASTM E 648. INSTALLATION ACCESSORIES RUBBER COVE BASE: SHALL BE 4" RUBBER BASE AS MANUFACTURED BY FLEXXO WALLFLOWERS OR APPROVED EQUAL. CONFORM TO FEDERAL SPECIFICATION SS-46-40-00, TYPE 1. PROVIDE LONGEST LENGTHS AVAILABLE AND FURNISH PRE-MANUFACTURED CORNER PIECES. TROWELABLE LEVELING AND PATCHING COMPOUNDS: LATEX-MODIFIED, PORTLAND CEMENT- OR BLENDED HYDRAULIC CEMENT-BASED FORMULATION PROVIDED OR APPROVED BY FLOORING MANUFACTURER FOR APPLICATIONS INDICATED. ADHESIVES: WATER-RESISTANT TYPE RECOMMENDED BY MANUFACTURER TO SUIT			PART 32 - PRODUCTS 0.1 A. C. D. E. F. VINYL COMPOSITION FLOOR TILE VCT-1 MANNINGTON 1. COLOR AND PATTERN: "ESSENTIALS" COLOR 143 FLAX WITH COLOR 105 ACCENT. ASTM F 1066, CLASS 2 (THROUGH-PATTERN TILE). WEARING SURFACE: EMBOSSED. THICKNESS: 1/8 INCH SIZE: 12 BY 12 INCHES NFPA 101, "LIFE SAFETY CODE," REQUIRES THAT FLOOR COVERING MATERIALS IN EXITS AND IN ACCESS TO EXITS MEET CRITICAL RADIANT FLUX LIMITATIONS IN CERTAIN OCCUPANCIES. AUTHORITIES HAVING JURISDICTION MAY IMPOSE OTHER RESTRICTIONS. DELETE BELOW IF NOT APPLICABLE. CRITICAL RADIANT FLUX CLASSIFICATION: CLASS 1, NOT LESS THAN 0.45 W/SQ. CM PER ASTM E 648. INSTALLATION ACCESSORIES RUBBER COVE BASE: SHALL BE 4" RUBBER BASE AS MANUFACTURED BY FLEXXO WALLFLOWERS OR APPROVED EQUAL. CONFORM TO FEDERAL SPECIFICATION SS-46-40-00, TYPE 1. PROVIDE LONGEST LENGTHS AVAILABLE AND FURNISH PRE-MANUFACTURED CORNER PIECES. TROWELABLE LEVELING AND PATCHING COMPOUNDS: LATEX-MODIFIED, PORTLAND CEMENT- OR BLENDED HYDRAULIC CEMENT-BASED FORMULATION PROVIDED OR APPROVED BY FLOORING MANUFACTURER FOR APPLICATIONS INDICATED. ADHESIVES: WATER-RESISTANT TYPE RECOMMENDED BY MANUFACTURER TO SUIT			PART 32 - PRODUCTS 0.1 A. C. D. E. F. VINYL COMPOSITION FLOOR TILE VCT-1 MANNINGTON 1. COLOR AND PATTERN: "ESSENTIALS" COLOR 143 FLAX WITH COLOR 105 ACCENT. ASTM F 1066, CLASS 2 (THROUGH-PATTERN TILE). WEARING SURFACE: EMBOSSED. THICKNESS: 1/8 INCH SIZE: 12 BY 12 INCHES NFPA 101, "LIFE SAFETY CODE," REQUIRES THAT FLOOR COVERING MATERIALS IN EXITS AND IN ACCESS TO EXITS MEET CRITICAL RADIANT FLUX LIMITATIONS IN CERTAIN OCCUPANCIES. AUTHORITIES HAVING JURISDICTION MAY IMPOSE OTHER RESTRICTIONS. DELETE BELOW IF NOT APPLICABLE. CRITICAL RADIANT FLUX CLASSIFICATION: CLASS 1, NOT LESS THAN 0.45 W/SQ. CM PER ASTM E 648. INSTALLATION ACCESSORIES RUBBER COVE BASE: SHALL BE 4" RUBBER BASE AS MANUFACTURED BY FLEXXO WALLFLOWERS OR APPROVED EQUAL. CONFORM TO FEDERAL SPECIFICATION SS-46-40-00, TYPE 1. PROVIDE LONGEST LENGTHS AVAILABLE AND FURNISH PRE-MANUFACTURED CORNER PIECES. TROWELABLE LEVELING AND PATCHING COMPOUNDS: LATEX-MODIFIED, PORTLAND CEMENT- OR BLENDED HYDRAULIC CEMENT-BASED FORMULATION PROVIDED OR APPROVED BY FLOORING MANUFACTURER FOR APPLICATIONS INDICATED. ADHESIVES: WATER-RESISTANT TYPE RECOMMENDED BY MANUFACTURER TO SUIT			PART 32 - PRODUCTS 0.1 A. C. D. E. F. VINYL COMPOSITION FLOOR TILE VCT-1 MANNINGTON 1. COLOR AND PATTERN: "ESSENTIALS" COLOR 143 FLAX WITH COLOR 105 ACCENT. ASTM F 1066, CLASS 2 (THROUGH-PATTERN TILE). WEARING SURFACE: EMBOSSED. THICKNESS: 1/8 INCH SIZE: 12 BY 12 INCHES NFPA 101, "LIFE SAFETY CODE," REQUIRES THAT FLOOR COVERING MATERIALS IN EXITS AND IN ACCESS TO EXITS MEET CRITICAL RADIANT FLUX LIMITATIONS IN CERTAIN OCCUPANCIES. AUTHORITIES HAVING JURISDICTION MAY IMPOSE OTHER RESTRICTIONS. DELETE BELOW IF NOT APPLICABLE. CRITICAL RADIANT FLUX CLASSIFICATION: CLASS 1, NOT LESS THAN 0.45 W/SQ. CM PER ASTM E 648. INSTALLATION ACCESSORIES RUBBER COVE BASE: SHALL BE 4" RUBBER BASE AS MANUFACTURED BY FLEXXO WALLFLOWERS OR APPROVED EQUAL. CONFORM TO FEDERAL SPECIFICATION SS-46-40-00, TYPE 1. PROVIDE LONGEST LENGTHS AVAILABLE AND FURNISH PRE-MANUFACTURED CORNER PIECES. TROWELABLE LEVELING AND PATCHING COMPOUNDS: LATEX-MODIFIED, PORTLAND CEMENT- OR BLENDED HYDRAULIC CEMENT-BASED FORMULATION PROVIDED		



MECHANICAL PLAN

Scale: 3/16" = 1'-0"

CFM

8"RD

18x18

AC-1

O.A.

T

EF

Duct Outlet Grille

Return Air Grille or Transfer Grille

Round Duct & Size (in. dia.)

Rectangular Duct & Size (in. X in.)

Duct Reducer

Outside Condensing Unit

Outside Air Ventilation Grille

Thermostat

Roof/Ceiling Exhaust Fan

1) COORDINATE THE INSTALLATION OF THE SUPPLY DIFFUSERS AND RETURN AIR GRILLES TO AVOID ANY INTERFERENCE WITH LIGHT FIXTURES.

2) TAPE & SCREW ALL ROUND DUCT JOINTS.

3) USE FLEXIBLE DUCT AT REGISTER OPENINGS ONLY. MAXIMUM RUN OF 3'0".

4) INSULATE ALL ROUND DUCTS W/2" EXTERNAL FOIL FACE FIBERGLASS WITH 100% VAPOR BARRIER INSULATION.

5) SIZE ALL RECTANGULAR DUCT EXACTLY AS INDICATED AND EXTERNALLY INSULATE.

6) DUCTWORK SHALL BE MINIMUM 26 GAUGE GALVANIZED STEEL AND MEET S.M.A.C.N.A. STANDARDS.

7) REFRIGERANT PIPING TO BE TYPE ARC COPPER TUBING, INSULATE W/3/8" ARMAFLEX.

8) THERMOSTATS SHALL BE MOUNTED ON THE WALL WITH TOP OF DEVICE 48" MAXIMUM ABOVE FINISHED FLOOR.

9) PROVIDE COMBUSTION AIR AND VENT FOR EACH GAS FURNACE UNIT WITH A CONCENTRIC VENT KIT THAT ALLOWS VENT AND COMBUSTION AIR PIPES TO TERMINATE THROUGH A SINGLE EXIT IN THE ROOF OR SIDE WALL (REFER TO FURNACE INSTALLATION INSTRUCTIONS AND MECHANICAL CODE FOR PROPER VENTING PROCEDURES).

10) EACH BRANCH TAKEOFF TO REGISTER SHALL HAVE A VOLUME CONTROL DAMPER.

11) PROVIDE OUTSIDE AIR DUCT TO EACH AIR HANDLING UNIT SIZED AS INDICATED WITH A MANUAL DAMPER TO SUPPLY THE INDICATED AMOUNT OF OUTSIDE AIR.

12) CONTRACTOR IS RESPONSIBLE FOR INSTALLING ALL REQUIRED FIRE/RADIATION DAMPERS WHERE DUCTS PENETRATE RATED ASSEMBLIES AS APPROPRIATE EVEN IF NOT SHOWN ON MECHANICAL DRAWINGS.

13) SMOKE DETECTORS TO BE FURNISHED AND INSTALLED PER ALL CODES IN DUCTWORK AS NECESSARY EVEN IF NOT SHOWN ON MECHANICAL DRAWINGS.

14) THE CONTRACTOR SHALL BALANCE THE SYSTEM TO THE CFM SPECIFIED IN THE DRAWINGS. NOTE: ADJUSTMENTS TO FLOW RATES SPECIFIED MAY BE NECESSARY AFTER SOME TIME OF OPERATION TO PROVIDE COMFORT FINE TUNING DUE TO HEAT GAIN VARIATION FROM DESIGN.

15) ANY CHANGES TO THE DUCT DUE TO FIELD CHANGES AND/OR RESTRAINTS SHALL BE MADE ONLY IF THE DUCT SIZE FREE AREA CAN BE MAINTAINED. ALL CHANGES SHALL BE APPROVED BY THE ARCHITECT AND/OR ENGINEER PRIOR TO INSTALLATION.

16) ALL DUCT HANGERS AND SUPPORTS SHALL BE IN ACCORDANCE WITH SECTION IV OF THE "HVAC CONSTRUCTION STANDARD" AS PUBLISHED BY S.M.A.C.N.A.

17) AFTER START-UP, CHECK ALL EQUIPMENT FOR VIBRATIONS AND NOISE. THE CONTRACTOR SHALL BE RESPONSIBLE FOR CORRECTING THE SITUATION IMMEDIATELY.

18) ALL GAS PIPING SHALL BE INSTALLED IN ACCORDANCE WITH THE LATEST VERSION ARKANSAS STATE PLUMBING AND APPLICABLE STATE GAS CODE.

19) UNDER CUT ALL NECESSARY DOORS ONE INCH TO PROVIDE THE REQUIRED RETURN AIR FLOW OR PROVIDE TRANSFER GRILLE AS INDICATED.

20) ALL EQUIPMENT, DUCT WORK, AND PIPING SHALL HAVE PROPER SUPPORT ADEQUATE FOR THE APPROPRIATE ARKANSAS SEISMIC ZONE APPLICATION.

21) ALL WORK SHALL CONFORM TO THE CURRENT APPLICABLE EDITION OF MECHANICAL, PLUMBING, & ELECTRICAL CODES PER THE AUTHORITIES HAVING JURISDICTION. ALL WORK SHALL BE PERFORMED BY EXPERIENCED MECHANICS IN A PROFESSIONAL MANNER TO PROVIDE SYSTEMS COMPLETE AND READY TO OPERATE.

EQUIPMENT SCHEDULE									
NO.	DESCRIPTION	QUANTITY	UNIT	PRICE	TOTAL	NO.	DESCRIPTION	QUANTITY	UNIT
1	CONDENSING UNIT	1	UNIT	150.00	150.00	2	CONDENSING UNIT	1	UNIT
3	CONDENSING UNIT	1	UNIT	150.00	150.00	4	CONDENSING UNIT	1	UNIT
5	CONDENSING UNIT	1	UNIT	150.00	150.00	6	CONDENSING UNIT	1	UNIT
7	CONDENSING UNIT	1	UNIT	150.00	150.00	8	CONDENSING UNIT	1	UNIT
9	CONDENSING UNIT	1	UNIT	150.00	150.00	10	CONDENSING UNIT	1	UNIT
11	CONDENSING UNIT	1	UNIT	150.00	150.00	12	CONDENSING UNIT	1	UNIT
13	CONDENSING UNIT	1	UNIT	150.00	150.00	14	CONDENSING UNIT	1	UNIT
15	CONDENSING UNIT	1	UNIT	150.00	150.00	16	CONDENSING UNIT	1	UNIT
17	CONDENSING UNIT	1	UNIT	150.00	150.00	18	CONDENSING UNIT	1	UNIT
19	CONDENSING UNIT	1	UNIT	150.00	150.00	20	CONDENSING UNIT	1	UNIT
21	CONDENSING UNIT	1	UNIT	150.00	150.00	22	CONDENSING UNIT	1	UNIT
23	CONDENSING UNIT	1	UNIT	150.00	150.00	24	CONDENSING UNIT	1	UNIT
25	CONDENSING UNIT	1	UNIT	150.00	150.00	26	CONDENSING UNIT	1	UNIT
27	CONDENSING UNIT	1	UNIT	150.00	150.00	28	CONDENSING UNIT	1	UNIT
29	CONDENSING UNIT	1	UNIT	150.00	150.00	30	CONDENSING UNIT	1	UNIT
31	CONDENSING UNIT	1	UNIT	150.00	150.00	32	CONDENSING UNIT	1	UNIT
33	CONDENSING UNIT	1	UNIT	150.00	150.00	34	CONDENSING UNIT	1	UNIT
35	CONDENSING UNIT	1	UNIT	150.00	150.00	36	CONDENSING UNIT	1	UNIT
37	CONDENSING UNIT	1	UNIT	150.00	150.00	38	CONDENSING UNIT	1	UNIT
39	CONDENSING UNIT	1	UNIT	150.00	150.00	40	CONDENSING UNIT	1	UNIT
41	CONDENSING UNIT	1	UNIT	150.00	150.00	42	CONDENSING UNIT	1	UNIT
43	CONDENSING UNIT	1	UNIT	150.00	150.00	44	CONDENSING UNIT	1	UNIT
45	CONDENSING UNIT	1	UNIT	150.00	150.00	46	CONDENSING UNIT	1	UNIT
47	CONDENSING UNIT	1	UNIT	150.00	150.00	48	CONDENSING UNIT	1	UNIT
49	CONDENSING UNIT	1	UNIT	150.00	150.00	50	CONDENSING UNIT	1	UNIT
51	CONDENSING UNIT	1	UNIT	150.00	150.00	52	CONDENSING UNIT	1	UNIT
53	CONDENSING UNIT	1	UNIT	150.00	150.00	54	CONDENSING UNIT	1	UNIT
55	CONDENSING UNIT	1	UNIT	150.00	150.00	56	CONDENSING UNIT	1	UNIT
57	CONDENSING UNIT	1	UNIT	150.00	150.00	58	CONDENSING UNIT	1	UNIT
59	CONDENSING UNIT	1	UNIT	150.00	150.00	60	CONDENSING UNIT	1	UNIT
61	CONDENSING UNIT	1	UNIT	150.00	150.00	62	CONDENSING UNIT	1	UNIT
63	CONDENSING UNIT	1	UNIT	150.00	150.00	64	CONDENSING UNIT	1	UNIT
65	CONDENSING UNIT	1	UNIT	150.00	150.00	66	CONDENSING UNIT	1	UNIT
67	CONDENSING UNIT	1	UNIT	150.00	150.00	68	CONDENSING UNIT	1	UNIT
69	CONDENSING UNIT	1	UNIT	150.00	150.00	70	CONDENSING UNIT	1	UNIT
71	CONDENSING UNIT	1	UNIT	150.00	150.00	72	CONDENSING UNIT	1	UNIT
73	CONDENSING UNIT	1	UNIT	150.00	150.00	74	CONDENSING UNIT	1	UNIT
75	CONDENSING UNIT	1	UNIT	150.00	150.00	76	CONDENSING UNIT	1	UNIT
77	CONDENSING UNIT	1	UNIT	150.00	150.00	78	CONDENSING UNIT	1	UNIT
79	CONDENSING UNIT	1	UNIT	150.00	150.00	80	CONDENSING UNIT	1	UNIT
81	CONDENSING UNIT	1	UNIT	150.00	150.00	82	CONDENSING UNIT	1	UNIT
83	CONDENSING UNIT	1	UNIT	150.00	150.00	84	CONDENSING UNIT	1	UNIT
85	CONDENSING UNIT	1	UNIT	150.00	150.00	86	CONDENSING UNIT	1	UNIT
87	CONDENSING UNIT	1	UNIT	150.00	150.00	88	CONDENSING UNIT	1	UNIT
89	CONDENSING UNIT	1	UNIT	150.00	150.00	90	CONDENSING UNIT	1	UNIT
91	CONDENSING UNIT	1	UNIT	150.00	150.00	92	CONDENSING UNIT	1	UNIT
93	CONDENSING UNIT	1	UNIT	150.00	150.00	94	CONDENSING UNIT	1	UNIT
95	CONDENSING UNIT	1	UNIT	150.00	150.00	96	CONDENSING UNIT	1	UNIT
97	CONDENSING UNIT	1	UNIT	150.00	150.00	98	CONDENSING UNIT	1	UNIT
99	CONDENSING UNIT	1	UNIT	150.00	150.00	100	CONDENSING UNIT	1	UNIT
101	CONDENSING UNIT	1	UNIT	150.00	150.00	102	CONDENSING UNIT	1	UNIT
103	CONDENSING UNIT	1	UNIT	150.00	150.00	104	CONDENSING UNIT	1	UNIT
105	CONDENSING UNIT	1	UNIT	150.00	150.00	106	CONDENSING UNIT	1	UNIT
107	CONDENSING UNIT	1	UNIT	150.00	150.00	108	CONDENSING UNIT	1	UNIT
109	CONDENSING UNIT	1	UNIT	150.00	150.00	110	CONDENSING UNIT	1	UNIT
111	CONDENSING UNIT	1	UNIT	150.00	150.00	112	CONDENSING UNIT	1	UNIT
113	CONDENSING UNIT	1	UNIT	150.00	150.00	114	CONDENSING UNIT	1	UNIT
115	CONDENSING UNIT	1	UNIT	150.00	150.00	116	CONDENSING UNIT	1	UNIT
117	CONDENSING UNIT	1	UNIT	150.00	150.00	118	CONDENSING UNIT	1	UNIT
119	CONDENSING UNIT	1	UNIT	150.00	150.00	120	CONDENSING UNIT	1	UNIT
121	CONDENSING UNIT	1	UNIT	150.00	150.00	122	CONDENSING UNIT	1	UNIT
123	CONDENSING UNIT	1	UNIT	150.00	150.00	124	CONDENSING UNIT	1	UNIT
125	CONDENSING UNIT	1	UNIT	150.00	150.00	126	CONDENSING UNIT	1	UNIT
127	CONDENSING UNIT	1	UNIT	150.00	150.00	128	CONDENSING UNIT	1	UNIT
129	CONDENSING UNIT	1	UNIT	150.00	150.00	130	CONDENSING UNIT	1	UNIT
131	CONDENSING UNIT	1	UNIT	150.00	150.00	132	CONDENSING UNIT	1	UNIT
133	CONDENSING UNIT	1	UNIT	150.00	150.00	134	CONDENSING UNIT	1	UNIT
135	CONDENSING UNIT	1	UNIT	150.00	150.00	136	CONDENSING UNIT	1	UNIT
137	CONDENSING UNIT	1	UNIT	150.00	150.00	138	CONDENSING UNIT	1	UNIT
139	CONDENSING UNIT	1	UNIT	150.00	150.00	140	CONDENSING UNIT	1	UNIT
141	CONDENSING UNIT	1	UNIT	150.00	150.00	142	CONDENSING UNIT	1	UNIT
143	CONDENSING UNIT	1	UNIT	150.00	150.00	144	CONDENSING UNIT	1	UNIT
145	CONDENSING UNIT	1	UNIT	150.00	150.00	146	CONDENSING UNIT	1	UNIT
147	CONDENSING UNIT	1	UNIT	150.00	150.00	148	CONDENSING UNIT	1	UNIT
149	CONDENSING UNIT	1	UNIT	150.00	150.00	150	CONDENSING UNIT	1	UNIT
151	CONDENSING UNIT	1	UNIT	150.00	150.00	152	CONDENSING UNIT	1	UNIT
153	CONDENSING UNIT	1	UNIT	150.00	150.00	154	CONDENSING UNIT	1	UNIT
155	CONDENSING UNIT	1	UNIT	150.00	150.00	156	CONDENSING UNIT	1	UNIT
157	CONDENSING UNIT	1	UNIT	150.00	150.00	158	CONDENSING UNIT	1	UNIT
159	CONDENSING UNIT	1	UNIT	150.00	150.00	160	CONDENSING UNIT	1	UNIT
161	CONDENSING UNIT	1	UNIT	150.00	150.00	162	CONDENSING UNIT	1	UNIT
163	CONDENSING UNIT	1	UNIT	150.00	150.00	164	CONDENSING UNIT	1	UNIT
165	CONDENSING UNIT	1	UNIT	150.00	150.00	166	CONDENSING UNIT	1	UNIT
167	CONDENSING UNIT	1	UNIT	150.00	150.00	168	CONDENSING UNIT	1	UNIT
169	CONDENSING UNIT	1	UNIT	150.00	150.00	170	CONDENSING UNIT	1	UNIT
171	CONDENSING UNIT	1	UNIT	150.00	150.00	172	CONDENSING UNIT	1	UNIT
173	CONDENSING UNIT	1	UNIT	150.00	150.00	174	CONDENSING UNIT	1	UNIT
175	CONDENSING UNIT	1	UNIT	150.00	150.00	176	CONDENSING UNIT	1	UNIT
177	CONDENSING UNIT	1	UNIT	150.00	150.00	178	CONDENSING UNIT	1	UNIT
179	CONDENSING UNIT	1	UNIT	150.00	150.00	180	CONDENSING UNIT	1	UNIT
181	CONDENSING UNIT	1	UNIT	150.00	150.00	182	CONDENSING UNIT	1	UNIT
183	CONDENSING UNIT	1	UNIT	150.00	150.00	184	CONDENSING UNIT	1	UNIT
185	CONDENSING UNIT	1	UNIT	150.00	150.00	186	CONDENSING UNIT	1	UNIT
187	CONDENSING UNIT	1	UNIT	150.00	150.00	188	CONDENSING UNIT	1	UNIT
189	CONDENSING UNIT	1	UNIT	150.00	150.00	190	CONDENSING UNIT	1	UNIT
191	CONDENSING UNIT	1	UNIT	150.00	150.00	192	CONDENSING UNIT	1	UNIT
193	CONDENSING UNIT	1	UNIT	150.00	150.00	194	CONDENSING UNIT	1	UNIT
195	CONDENSING UNIT	1	UNIT	150.00	150.00	196	CONDENSING UNIT	1	UNIT
197	CONDENSING UNIT	1	UNIT	150.00	150.00	198	CONDENSING UNIT	1	UNIT
199	CONDENSING UNIT	1	UNIT	150.00	150.00	200	CONDENSING UNIT	1	UNIT
201	CONDENSING UNIT	1	UNIT	150.00	150.00	202	CONDENSING UNIT	1	UNIT
203	CONDENSING UNIT	1	UNIT	150.00	150.00	204	CONDENSING UNIT	1	UNIT
205	CONDENSING UNIT	1	UNIT	150.00	150.00	206	CONDENSING UNIT	1	UNIT
207	CONDENSING UNIT	1	UNIT	150.00	150.00	208	CONDENSING UNIT	1	UNIT
209	CONDENSING UNIT	1	UNIT	150.00	150.00	210	CONDENSING UNIT	1	UNIT
211	CONDENSING UNIT	1	UNIT	150.00	150.00	212	CONDENSING UNIT	1	UNIT
213	CONDENSING UNIT	1	UNIT	150.00	150.00	214	CONDENSING UNIT	1	UNIT
215	CONDENSING UNIT	1	UNIT	150.00	150.00	216	CONDENSING UNIT	1	UNIT
217	CONDENSING UNIT	1	UNIT	150.00	150.00	218	CONDENSING UNIT	1	UNIT
219	CONDENSING UNIT	1	UNIT	150.00	150.00	220	CONDENSING UNIT	1	UNIT
221	CONDENSING UNIT	1	UNIT	150.00	150.00	222	CONDENSING UNIT	1	UNIT
223	CONDENSING UNIT	1	UNIT	150.00	150.00	224	CONDENSING UNIT	1	UNIT
225	CONDENSING UNIT	1	UNIT	150.00	150.00	226	CONDENSING UNIT	1	UNIT
227	CONDENSING UNIT	1	UNIT	150.00	150.00	228	CONDENSING UNIT	1	UNIT
229	CONDENSING UNIT	1	UNIT	150.00	150.00	230	CONDENSING UNIT	1	UNIT
231	CONDENSING UNIT	1	UNIT	150.00	150.00	232	CONDENSING UNIT	1	UNIT
233	CONDENSING UNIT	1	UNIT	150.00	150.00	234	CONDENSING UNIT	1	UNIT
235	CONDENSING UNIT	1	UNIT	150.00	150.00	236	CONDENSING UNIT	1	UNIT
237	CONDENSING UNIT	1	UNIT	150.00	150.00	238	CONDENSING UNIT	1	UNIT
239	CONDENSING UNIT	1	UNIT	150.00	150.00	240	CONDENSING UNIT	1	UNIT
241	CONDENSING UNIT	1	UNIT	150.00	150.00	242	CONDENSING UNIT	1	UNIT
243	CONDENSING UNIT	1	UNIT	150.00	150.00	244	CONDENSING UNIT	1	UNIT
245	CONDENSING UNIT	1	UNIT	150.00	150.00	246	CONDENSING UNIT	1	UNIT
247	CONDENSING UNIT	1	UNIT	150.00	150.00	248	CONDENSING UNIT	1	UNIT
249	CONDENSING UNIT	1	UNIT	150.00	150.00	250	CONDENSING UNIT	1	UNIT
251	CONDENSING UNIT	1	UNIT	150.00	150.00	252	CONDENSING UNIT	1	UNIT
253	CONDENSING UNIT	1	UNIT	150.00	150.00	254	CONDENSING UNIT	1	UNIT
255	CONDENSING UNIT	1	UNIT	150.00	150.00	256	CONDENSING UNIT	1	UNIT
257	CONDENSING UNIT	1	UNIT	150.00	150.00	258	CONDENSING UNIT	1	UNIT
259	CONDENSING UNIT	1	UNIT	150.00	150.00	260	CONDENSING UNIT	1	UNIT
261	CONDENSING UNIT	1	UNIT	150.00	150.00	262	CONDENSING UNIT	1	

M

L

J

H

G

F

E

D

C

B

A



Quote

08/26/2016

Project:
Jackson County Senior Center

From:
Ford Hotel Supply Co.
Cory Wall
2204 N. Broadway
St. Louis, MO 63102-1404
(314)231-8400

Item	Qty	Description	Sell	Sell Total
1	1 ea	CAN RACK New Age Model No. 99381 Economy First In, First Out Can Rack, 26 5/8"W x 78 1/4"H x 42"D, stationary design, holds (156) #10 cans, adjustable feet, NSF	\$1,316.00	\$1,316.00
1 ea		Lifetime warranty against rust & corrosion, 1 year construction warranty, std.		
2	1 lt	DRY STORAGE SHELVING Centaur® Packed It Dry Storage Shelving	\$825.00	\$825.00
25 ea		C1848C Centaur® Shelving, wire, 48"W x 18"D, chrome plated finish, NSF		
20 ea		C86C Centaur® Stationary Post, 86-5/8"H, with leveling bolt & cap, chrome		
3	3 ea	HAND SINK John Boos Model No. PBHS-W-1410-P-SSLR Pro-Bowl Hand Sink, wall mount, 14"W x 10" front-to-back x 5" deep, 4" O.C. splash mount faucet holes, 1-7/8" drain, all stainless steel construction, with left & right side splashes, NSF, CSA (Splash Mount Faucet included)	\$177.00	\$531.00
4	1 ea	ICE CUBER Manitowoc Model No. ID-452A Indigo™ Series Ice Maker, cube-style, air-cooled, self-contained condenser, 30"W x 24 1/2"D x 21-1/2"H, up to 420-lb approximately/24 hours, DuraTech™ exterior (stainless finish with innovative clear-coat resists fingerprints & dirt), size dice cubes, ENERGY STAR®	\$3,727.00	\$3,727.00
1 ea		3 year parts & labor Commercial warranty		
1 ea		5 year parts & labor Commercial warranty on evaporator		
1 ea		5- year parts & 3 year labor Commercial warranty on compressor		
1	(161)	115v/60/1-ph, 13.2 amps		
1 ea		NOTE: Built-in FACTORY INSTALLED Luminec II system only available for (161) voltage. Select FIELD INSTALL kit (K-00450) below for all voltages		
1 ea		AR-10000 Arctic Pure™ Primary Water Filter Assembly, includes head, shroud, hardware, mounting assembly, & (1) filter cartridge; 14,000 gallon capacity, 0-600 lbs./ice per day		
1 ea		B-400 Ice Bin, 30"W x 34"D, 38"H, with top-hinged front-opening door, approximately 290 lb ice storage capacity, for top-mounted ice maker, stainless steel exterior		

LDP4#1

Initial: _____
Page 1 of 11

Item	Qty	Description	Sell	Sell Total
		condenser device equipped, stainless steel top with refrigeration pan rail, (9) condiment pans included, 19-1/4" deep removable cutting board, stainless steel interior and exterior, ABS door liner, insulated pan cover, (2) doors with recessed handles, (4) stainless steel shelves, 4" casters, side-mount, self-contained, 2/3 HP, 115v/60/1, 10.4 amps, cord with NEMA 5-15P, UL, cUL, NSF 7, cETLus		
1 ea		3 year parts & labor warranty, standard		
1 ea		Additional 2 year compressor warranty (5 year total), standard		
1 ea		Self-contained refrigeration, standard		
1 ea		Self-cleaning condenser device equipped, standard		
1		Left door hinged left, right door hinged right, standard		
1 ea		1 1/3 size, 6" deep condiment pan & pan support bars included, standard		
1 ea		4" swivel casters set, locks on the front, 5" height, standard		
1		TS05-P6 Overshelf -single, 304 stainless steel, for pizza prep table-TPR-675D, TPR-675D-D2/-D4		
24	1 ea	HOT FOOD SERVING COUNTER Duke Manufacturing Model No. E304-2555 AeroServ Hot Food Unit, electric, 60"W x 24 1/2"D x 36"H, 20/300 series stainless steel top, (4) 12" x 20" stainless steel sealed heat walls, copper manifold drains, (1) brass valve, infinite switch for each well, channeled edges, stainless steel body & undershelf, 6" stainless steel legs with adjustable feet, cULus, UL EPH CLASSIFIED	\$4,438.00	\$4,438.00
1 ea		120v/60/1-ph, 3000 watts, 25.0 amps, NEMA 5-50P		
1 ea		6 ft. electric cord & plug (must add to portable units to meet UL)		
1 ea		10" wide poly cutting board on 18ga stainless steel shelf, 1/2" white poly, on (2) stainless steel fixed brackets, & mounted with stainless steel shelf flush to counter top (no hinged brackets)		
1 ea		Located on operator's side		
1 ea		#956-460-4 Serving shelf with glass protector panel, 18ga 300 series stainless shelf, 10-1/2" wide, 20" high, 58-1/2" long, 3/4" square stainless tube posts, 1/4" thick glass panel & 1/4" acrylic end guards		
25	1 ea	COLD PAN SERVING COUNTER Duke Manufacturing Model No. 333 AeroHot Ice Cooled Cold Pan Unit, 44-3/8", (3) pan size, 5" deep ice cold pan, stainless steel top with 1/2" thick x 7"W poly carving board with fixed brackets, stainless steel open base with undershelf, stainless steel legs, NSF	\$1,918.00	\$1,918.00
1 ea		#956-460-3 Deluxe Serving Overshelf, table mount, 44-7/32"W x 10-1/2"D x 20"H, with 1/4" thick plate glass protector, 18 gauge stainless steel with all edges flanged down 2", supported on formed 3/4" square stainless steel tubular brackets, cULus, UL EPH CLASSIFIED		
1 ea		F445-35 Cutting Board/Tray Shelf, stainless steel, 10" wide x 1" thick, for units with (3) openings		
26	2 ea	WORK TABLE John Boos Model No. ST6-30725SK-X Work Table, 72"W x 30"D, 16/300 stainless steel flat top with Stallion safety edge front & back, 30" turnaround on sides, 18 gauge stainless steel adjustable undershelf, stainless steel legs & bullet feet, NSF, KD	\$501.00	\$1,002.00

LDP4-19

LDP4-21

Initial: _____
Page 6 of 11

Item	Qty	Description	Sell	Sell Total
1 ea		6" adjustable stainless steel legs, standard		
5	1 ea	SOILED DISH TABLE John Boos Model No. SD74-S1085BK-1 Pro-Bowl Dish Table, soiled straight, 108" W x 30-3/8" D, for left-to-right operation, 10"H boxed back splash, 2-1/4" rolled edge, 14 gauge, 300 stainless steel top, 20"W x 20"D x 8" deep pre-rinse sink bowl, 1" splash mount faucet holes with 8" centers, 16 gauge, 300 stainless steel legs & adjustable bracing, stainless steel satin finish bullet feet	\$5,774.00	\$5,774.00
2 ea		CUT2020084 Weld-In Sink, one compartment, 20"W x 20"L x 8"D, 14/300 stainless steel fabricated bowl, includes cutout, bowl, faucet holes & welding/polishing (Not available for FBLC & UFGC)		
2 ea		Krowne 22-204 Krowne Twist Waste with 1-1/4" Overflow Outlet with Cap, 3-1/2" Sink Opening, 2" NPS Male Threaded with 1-1/2" Female Threaded Drain Outlet (No Adapter Required), 4-1/2" Flange, Stainless Steel Strainer, Flange & Handle		
1 ea		T&S Brass 5PR-8W00 Equip Pre-Rinse Unit, 8" centers, wall mount base, 6" wall bracket		
2 ea		T&S Brass 5F-8WUX08 Equip Pre-Rinse Unit, 8" centers, wall mount, 8" swivel nozzle, 2" flange		
1 ea		Salvajor 100-SA-3-ARSS Disposer, Sink Assembly, 3-1/2" sink collar, 1 Hp motor, start/stop push button, drain/flush/time delay, automatic reversing & water saving ARSS control, includes fixed nozzle, vacuum breaker, solenoid valve, sink stopper & flow control, heat treated aluminum alloy housing, UL, CSA, CE		
1 ea		Salvajor 115v/60/1-ph, 18.6 amps		
6	1 ea	DISHWASHER, CONVEYOR TYPE CMA Dishmachines Model No. EST-44/L-R Energy Mizer® Dishwasher, conveyor type, 44"W x 25-1/8"D x 55-1/2"H, left-to-right operation, low temp chemical sanitizing or high temp sanitizing, dual tank design, (3) stage wash process (wash/power rinse/final rinse), (249) racks/hour, 19" dish clearance, electric tank heat, auto start/stop, auto fill, automatic water control system, power rinse heater system, automatic soil purging system, chemical resistant industrial heaters, table limit switch & rack save clutch system, removable curtains, stainless steel construction, includes (1) open & (1) peg rack, 1 HP wash motor, 1/3 HP rinse motor, 1/8 HP conveyor motor, ENERGY STAR®, UL, cULus, ETL	\$11,346.00	\$11,346.00
1 ea		208v/60/3-ph, 53.0 amps, standard		
1		E-TEMP E-Temp® Booster Heater (top mounted factory installed)		
1 ea		40 degree rise (F), single element		
1 ea		208v/60/3-ph, 9.0kW, 25.0 amps		
7	1 ea	CONDENSATE HOOD Captive-Aire Condensate Hood & Fan	\$1,830.00	\$1,830.00
8	1 ea	CLEAN DISH TABLE John Boos Model No. CDT6-5965BK-R Dishable, clean, straight design, 96"W x 30"D x 34"H, left-to-right operation, 16/300 series stainless steel top, 10"H back splash, 2-1/4"H	\$956.00	\$956.00

LDP4-2&4

LDP4-4&6

Initial: _____
Page 2 of 11

Item	Qty	Description	Sell	Sell Total
		(FLYER NET PRICING)		
2 ea		Standard Flyer accessories only, NO modifications to flyer items allowed or their accessories		
27	1 ea	COFFEE BREWER Grindmaster-Cecilware Model No. B-DAP Precision Brew™ Coffee Brewer for Airports, fresh brew, automatic, digital controls, dual brewer, 2.2 and 2.5 liter brew capacity, stainless steel construction, NSF, cULus, CE (Grindmaster)	\$1,684.00	\$1,684.00
1 ea		2 years parts & labor warranty, standard		
1 ea		120V/240/60/1, 6000W, 25 amps, standard		
2 cs		70768-C Airport, 2.2 liter, push top, glass liner, regular with black push plate, ETL, (6 each per case) (Grindmaster)		
28	1 ea	TEA BREWER Curtis Model No. RTB G3 Tea Brewer, 3 gallon capacity per side, 12 gallons per hour, 1.6 gallon tank volume, digital LCD scroll-through programming, rotating basket, stainless steel, 120v/50-60/1-ph, 1650 watts, 13.8 amps, 1 GPM, 2W-C, 20-90 psi, 1/4" flare fitting, UL, NSF	\$732.00	\$732.00
29	1 ea	PASS THRU COUNTER Custom Fab Pass Thru Counter	\$1,490.00	\$1,490.00
30	1 ea	WALK-IN COOLER Bally Refrigerated Boxes Walk-In Cooler 8'x 8' w/ evaporator coils and condensing units	\$9,221.00	\$9,221.00
31	1 lt	WALK-IN COOLER SHELVING Centaur® Packed It	\$689.00	\$689.00
8 ea		C1836K Centaur® Shelving, wire, 36"W x 18"D, green epoxy, NSF		
11 lt		Limited 7 year warranty against corrosion on all green epoxy shelves, posts & accessories		
11 ea		C1848K Centaur® Shelving, wire, 48"W x 18"D, green epoxy, NSF		
11 lt		Limited 7 year warranty against corrosion on all green epoxy shelves, posts & accessories		
20 ea		C74K Centaur® Stationary Post, 74-5/8"H, with leveling bolt & cap, green epoxy		
32	1 ea	WALK-IN FREEZER Bally Refrigerated Boxes Walk-In Freezer 8'x 8' w/ evaporator coil & condensing unit	\$10,149.00	\$10,149.00
33	1 lt	WALK-IN FREEZER SHELVING Centaur® Packed It	\$689.00	\$689.00
8 ea		C1836K Centaur® Shelving, wire, 36"W x 18"D, green epoxy, NSF		
8 lt		Limited 7 year warranty against corrosion on all green epoxy shelves, posts & accessories		
11 ea		C1848K Centaur® Shelving, wire, 48"W x 18"D, green epoxy, NSF		
11 lt		Limited 7 year warranty against corrosion on all green epoxy shelves, posts & accessories		
20 ea		C74K Centaur® Stationary Post, 74-5/8"H, with leveling bolt & cap, green epoxy		

LDP4-24, 26

LDP4-25, 27

Initial: _____
Page 7 of 11

Item	Qty	Description	Sell	Sell Total
		rolled edge, stainless steel legs, adjustable stainless steel bracing & bullet feet		
1 ea		PB SNW-63 Sorting Shelf, holds (3) racks, 63"W x 18"D x 16"H, wall mounted, solid, include: brackets, 18 ga./300 series stainless steel, NSF		
9	1 ea	WORK TABLE WITH SINK(S) John Boos Model No. EPT6R5-30725SK-R-X Work Table, 72"W x 30"D, 16/300 stainless steel top with 5" dip-down riser, 16 x 20 x 12 right sink bowl with 4" deck mount faucet & 10" spout, stainless steel legs & adjustable undershelf, 1" stainless steel adjustable bullet feet, NSF, KD (FLYER NET PRICING)	\$3,280.00	\$3,280.00
1 ea		Standard Flyer accessories only, NO modifications to flyer items allowed or their accessories		
1 ea		Salvajor 100-SA-3-ARSS Disposer, Sink Assembly, 3-1/2" sink collar, 1 Hp motor, start/stop push button, drain/flush/time delay, automatic reversing & water saving ARSS control, includes fixed nozzle, vacuum breaker, solenoid valve, sink stopper & flow control, heat treated aluminum alloy housing, UL, CSA, CE		
10	1 ea	WORK TABLE John Boos Model No. ST4R5-3048SK Work Table, 48"W x 30"D, 14/300 stainless steel top with 5" backplash, Stallion safety edge front, 90" turnaround on sides, 18 gauge stainless steel adjustable undershelf, stainless steel legs & bullet feet, NSF, KD	\$1,396.00	\$1,396.00
1 ea		D11 Drawer Unit, 3-tier, 19-1/2"W x 24"D x 21"H, for work top tables, NSF		
11	1 ea	SHELVING, WALL-MOUNTED John Boos Model No. EW58-1684-X Shelf, wall-mounted, 84"W x 16"D, finished with stallion safety edge front, 1-1/2" turned up backplash, (3) support brackets, 18/300 series stainless steel with #4 polish, NSF, KD (FLYER NET PRICING)	\$135.00	\$135.00
12	1 ea	POT RACK John Boos Model No. PRW13A Pot Rack, wall mount, single bar, 84" L, 3/16" x 2" stainless steel flat bar, includes (7) stainless steel double hooks, NSF	\$322.00	\$322.00
13	1 ea	PAN RACK, BUN New Age Model No. 1331 Bun Pan Rack, mobile, full height, end loading, open sides, accommodates (20) 18" x 26" pans, slides on 3" centers (18) x 26" or (34) 12" x 20" x 2-1/2" pan capacity, 5" casters (2 with brakes), aluminum construction, (4) 5" platform casters, NSF	\$387.00	\$387.00
1 ea		Lifetime warranty against rust & corrosion, 5 year construction warranty, standard		
1 ea		5" platform type casters, std.		
14	1 ea	EXHAUST HOOD Captive-Aire Exhaust Hood & Fan	\$3,538.00	\$3,538.00
15	1 ea	BOILERLESS STEAMER AccuTemp Model No. S3/5620830B80	\$12,451.00	\$12,451.00

LDP4-3&5

Initial: _____
Page 3 of 11

Item	Qty	Description	Sell	Sell Total
2900	1 ea	CONSOLIDATION Custom Storage and delivery of kitchen equipment items.	\$3,500.00	\$3,500.00
2901	1 ea	INSTALLATION OF EQUIPMENT INSTALLATION Installation of all Buyout equipment. Receive at jobsite, un-crate, set in-place, caulking and leveling of tables, erection of shelving units and installing any wall shelves or pot racks.	\$9,350.00	\$9,350.00
2902	1 ea	INSTALLATION OF WALK-INS INSTALLATION Erection of Walk-ins, running of refrigeration lines. Excludes any electrical work or plumbing work. Excludes any hoisting of units on top of roof of building if necessary.	\$8,800.00	\$8,800.00
2903	1 ea	INSTALLATION OF HOODS INSTALLATION Hanging of Exhaust and condensate hoods. Hoisting of Make-Up Air and or fan units to roof is excluded. Any HVAC ductwork is excluded.	\$6,325.00	\$6,325.00
2904	1 ea	PROJECT MANAGEMENT Project Travel and time for on-site project overseeing and/or any project related issues	\$863.00	\$863.00
Total			\$157,738.00	

The above quoted prices **DO NOT** include sales tax.
Applicable sales tax charges may apply.

The above quoted prices are valid for Sixty (60) days.

OUR STANDARD TERMS ARE:
50% Down with a signed acceptance and/or a purchase order.
40% Due upon delivery of the equipment.
Remaining 10% Due NET 30 after completion.

PRICE INCLUDES THE FOLLOWING:
Unload, Uncrate, Set-In Place the above equipment.

PRICE DOES NOT INCLUDE THE FOLLOWING (Unless Specifically Stated):
Permits.

Architectural scaled drawings for application of permits.
Utility service rough-ins or final connections.
Engineered scaled drawings for installation of the exhaust equipment.
Seismic bracing hardware or installation.
Welded black iron exhaust ductwork.
Insulating fire wrap for the exhaust ductwork.
Supply air ductwork or flexible supply duct extensions.
Sectional dishwasher exhaust ductwork.
Fire rated enclosures or fire stopping or fire blocking.
Interconnecting wiring from equipment to equipment controls.

Initial: _____
Page 8 of 11

Item	Qty	Description	Sell	Sell Total
		Two Steam N'Hold™ Boilerless Convection Steamer, includes stand with casters, electric, (1)3 & (1)6 12x20x2-1/2 pan units, vacuum cooking, manual mech. timer controls, NO water or drain connections required, 8kw each, (2) 208/60/3ph, (2) 5' cords & NEMA L15-30P, ENERGY STAR®		
1 ea		1 year parts & labor warranty, standard		
1 ea		Lifetime service and support guarantee		
1 ea		Alternate voltages available, contact factory for details		
1 ea		Door hinged on right standard		
1 ea		SNH-21-00 - Support Stand, for double stacked Steam N'Hold or Evolution units, standard mounting height: 15" lowest unit height, stainless steel, with 5" casters, standard		
16	1 ea	CONVECTION OVEN Southbend Model No. BGS/125C Bronze Convection Oven, gas, single-deck, standard depth, solid state controls, 60-minute cook timer, electronic ignition, oven interior tilt, stainless steel front, top, sides & door, porcelain interior, 26" painted steel triangular legs, 120v/60/1-ph, NEMA 5-15P, 1/2 HP, 54,000 BTU, CSA, NSF	\$3,317.00	\$3,317.00
1 ea		Note: 10% up charge for Int'l orders shipping outside of North America, beginning January 2016		
1 ea		1 year parts & labor including doors warranty, std		
1 ea		Natural Gas		
1 ea		T&S Brass HG-4D-48K Safe-T-Link Gas Connector Kit, 3/4" connection, 48", stainless steel braid with extruded coating, (1) quick disconnect, (1) street "EL", ball valve, restraining cable adjustable for 3'to 5'		
17	1 ea	HEATED CABINET, MOBILE Metro Model No. CS19-HFC-4 CS™ 1 Series Heated Holding Cabinet, mobile, full height, non-insulated, clear polycarbonate door, removable bottom mount control module, thermostat to 190°F, fixed wire slides on 3" centers (18) x 26" or (34) 12" x 20" x 2-1/2" pan capacity, 5" casters (2 with brakes), aluminum, 120v/60/1-ph, 2000 watts, 16.7 amps, NEMA 5-20P, cULus, NSF	\$1,728.00	\$1,728.00
18	1 ea	REACH-IN REFRIGERATOR Turbo Air Model No. M3R24-1 Refrigerator, reach-in, one-section, 24 cu. ft., exterior LED digital thermometer, door open beep, self-diagnostic monitoring system, hot gas condensate system, automatic fan motor delay, door pressure release, LED interior lighting, self-cleaning condenser device, (1) hinged solid door with recessed handle & lock, field reversible, (3) PE coated wire shelves, stainless steel front & sides, aluminum interior with stainless steel floor, 4" swivel casters, top mount self-contained compressor, 1/4 HP, 115v/60/1, 5.5 amps, NEMA 5-15P, NSF 7, cETLus, ENERGY STAR®	\$2,199.00	\$2,199.00
1 ea		3 year parts & labor warranty, standard		
1 ea		Additional 2 year compressor warranty (5 year total), standard		
1 ea		Self-cleaning condenser device equipped, standard		

LDP4-7, 9, 11

LDP4-8, 10, 12

LDP4-13

LDP4-15

LDP4-17

Initial: _____
Page 4 of 11

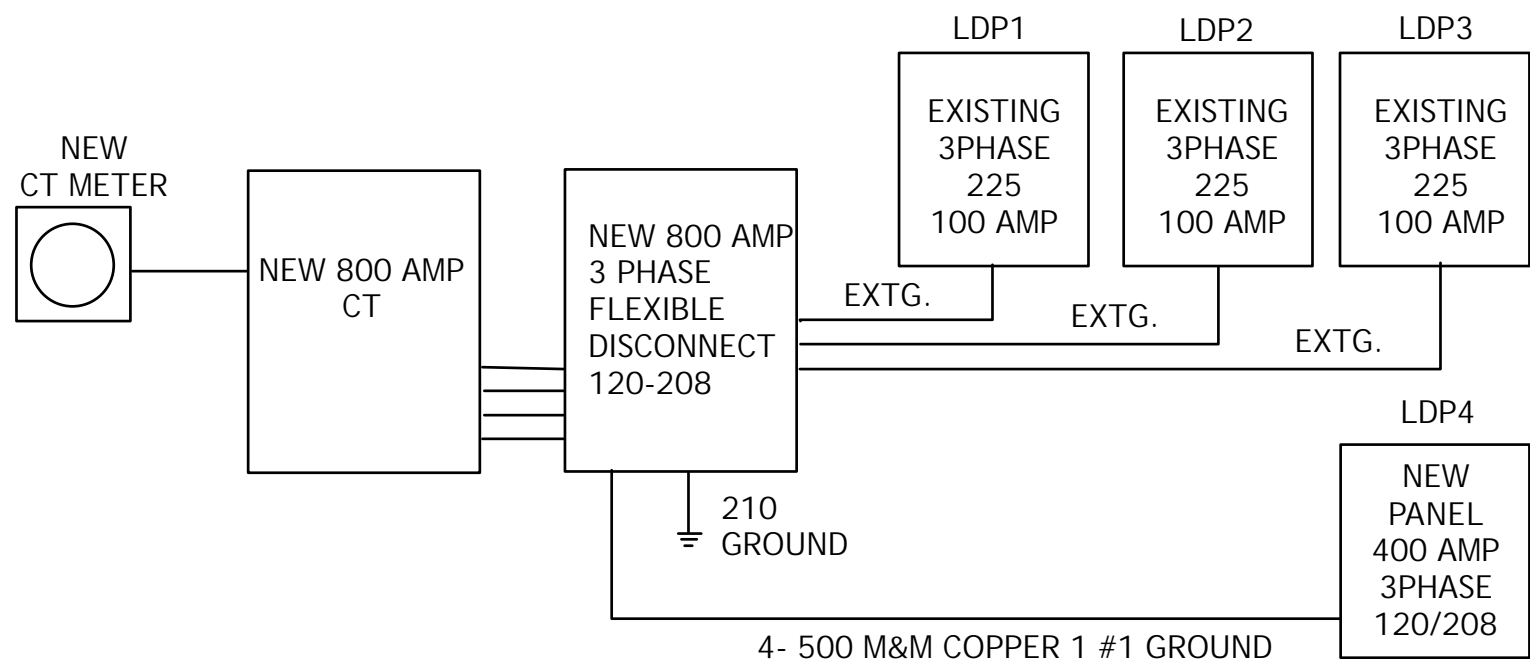
Item	Qty	Description	Sell	Sell Total
		Shunt trip breakers in building panel boxes or equipment disconnects. Installation of the fire suppression system gas valve. Connection of the fire suppression system to any building fire alarm, strobe, or bells. Sealing or roof at fan curbs or pitch pans. Core drilling or any wall, floor, or roof penetrations. Vision screen or safety fences around roof top equipment. Work to walls, floors, or ceiling. Back-Flow prevention devices or installation of back-flow devices. Grassie Trap. Any Labor considered Premium Time. Dumpster for waste.		

NOTE TO CONTRACTORS:

As noted on the last two pages, supply of the kitchen appliances and fixtures is not in the contract. The contractor is responsible for anything that is not included by the kitchen equipment supplier, as noted on page 8 and 9, except those items noted that are customarily supplied by the architect.

If there are any questions related to the kitchen equipment, please contact the kitchen equipment supplier at the address and telephone on page one.

Initial: _____
Page 9 of 11



REPLACE EXISTING SERVICE W/ NEW 800 AMP 3 PHASE 120/208 SERVICE.

Ford Hotel Supply Co.			08/26/2016	
Item	Qty	Description	Sell	Sell Total
	1 ea	Door hinged on right (field reversible), standard		
	1 ea	LED lighting, standard		
	1 ea	4" Swivel casters set, locks on the front, 5" height, standard		
19	1 ea	EXHAUST HOOD Captive-Aire Exhaust Hood , Fan, & Make-up air unit w/ electrical control panel	\$18,317.00	\$18,317.00
			LDP4-14, 16	
20	1 ea	FRYER Pitco Frialator Model No. 405 Economy Fryer, gas, medium-duty restaurant design, 42-45 lb. fat cap, mechanical thermostat, stainless steel tank, 4 1/2 from, 105,000 BTU	\$1,224.00	\$1,224.00
	1 ea	T&S Brass HG-4D-48K Safe-T-Link Gas Connector Kit, 3/4" connection, 48", stainless steel braid with extruded coating, (1) quick disconnect, (1) street "EL", ball valve, restraining cable adjustable for 3'to 5'		
21	1 ea	TILTING SKILLET, GAS Southbend Model No. BGLTS-30 Tilting Skillet, gas, 30 gallon capacity, electric tilt mechanism, electronic ignition, removable lip strainer, spring assisted cover, stainless steel interior and exterior finish, open frame base, 80,000 BTU, CSA	\$13,114.00	\$13,114.00
	1 ea	Note: 10% up charge for Int'l orders shipping outside of North America, beginning January 2016		
	1 ea	Standard one year limited warranty		
	1 ea	Natural Gas		
	1 ea	115v/50/60/1-ph, standard		
	1 ea	TFT-1 1-1/2" tangent draw off valve mounted to the front toward left side of tilting kettle		
	1 ea	SF-60 Single pantry kettle filler with mounting bracket		
	1 ea	T&S Brass HG-4D-48K Safe-T-Link Gas Connector Kit, 3/4" connection, 48", stainless steel braid with extruded coating, (1) quick disconnect, (1) street "EL", ball valve, restraining cable adjustable for 3'to 5'		
			LDP4-18	
	1 ea	RANGE, 60", 6 BURNERS, 24" GRIDDE Southbend Model No. 4601UD-2GR Ultimate Restaurant Range, gas, 60", (6) non-clog burners, standard grates, (1) 24" grididle ring, standing pilot, (2) standard ovens with battery spark ignition, includes (3) rack set, oven, 25,127' fuel riser with shelf, stainless steel front, sides, shelf & 6" adjustable legs, 336,000 BTU, cCSAus, CSA Flame, NSF	\$4,927.00	\$4,927.00
	1 ea	Note: 10% up charge for Int'l orders shipping outside of North America, beginning January 2016		
	1 ea	Standard one year limited warranty (range)		
	1 ea	NOTE: 22.5" high flue riser, with heavy duty shelf, standard		
	1 ea	Natural Gas		
	1 ea	T&S Brass HG-4D-48K Safe-T-Link Gas Connector Kit, 3/4" connection, 48", stainless steel braid with extruded coating, (1) quick disconnect, (1) street "EL", ball valve, restraining cable adjustable for 3'to 5'		
			LDP4-20	
23	1 ea	PIZZA PREPARATION REFRIGERATOR Turbo Air Model No. TPR-67SD	\$4,248.00	\$4,248.00