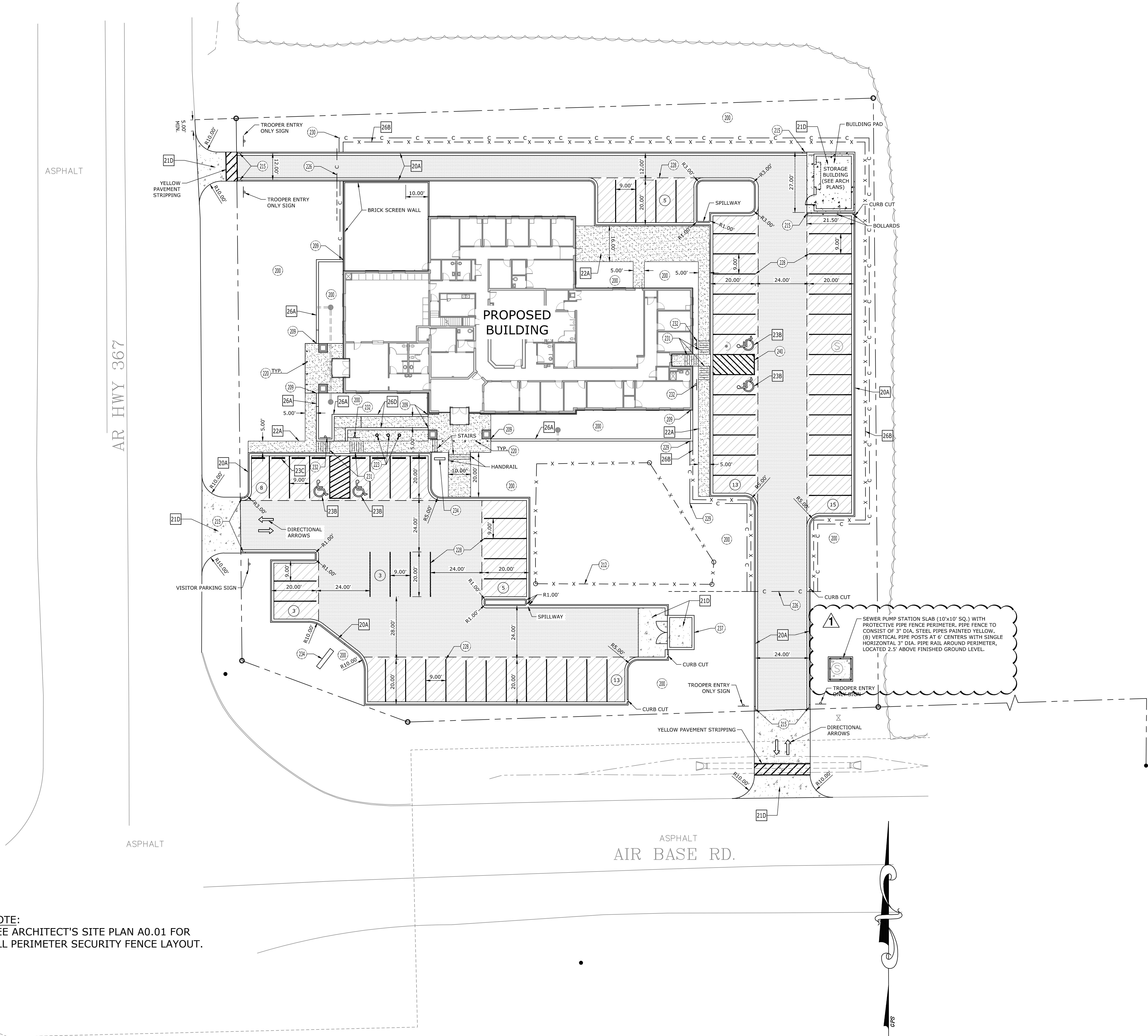


W:\2018\16-5803 Newport State Police Troop Headquarters Grading Drawings\16-5803-0520A.dwg Aug 27, 2018 - 11:35am

NOTE:
SEE ARCHITECT'S SITE PLAN A0.01 FOR
ALL PERIMETER SECURITY FENCE LAYOUT.



NOTE:
SEE ARCHITECT'S SITE PLAN A0.01 FOR
ALL PERIMETER SECURITY FENCE LAYOUT.

EXISTING LEGEND

15	SANITARY SEWER LINE	16	WATER FAUCET
16	WATER LINE	17	SANITARY SEWER MH
17	GAS LINE	18	CLEAN-OUT
18	UNDERGROUND PHONE	19	DRAINAGE MH
19	UNDERGROUND ELECTRIC	20	POWER POLE
20	UNDERGROUND TV	21	GUY WIRE WITH ANCHOR
21	UNDERGROUND FIBER OPTIC	22	GAS METER
22	UNDERGROUND COX CABLE	23	LIGHT POLE
23	OVERHEAD UTILITIES	24	GROUND LIGHTS
24	FENCE	25	PEDESTAL (AS NOTED)
25	DITCH FLOWLINE	26	SIGN (AS NOTED)
26	FIRE HYDRANT	27	POST (AS NOTED)
27	WATER METER	28	FOUND IRON PIN
28	WATER VALVE	29	CONTROL POINT

PROPOSED LEGEND

—	PROPOSED CURB AND GUTTER LINE
—	6" CHAIN LINK FENCE (BLACK VINYL COATED)
—	CASS-STD 3-CABLE GUARDRAIL SAFETY SYSTEM
—	CURB INLET/JUNCTION BOX REINFORCED CONCRETE
—	FLARED END SECTION PROPOSED
—	STORM SEWER MANHOLE
—	PROPOSED SANITARY SEWER MANHOLE
—	PROPOSED PARKING COUNT
—	BUILDING CONTROL POINT

GENERAL SITE NOTES

1. ALL OSHA REGULATIONS SHALL BE STRICTLY FOLLOWED AND SPECIAL CARE TAKEN TO PREVENT INTERACTION W/ OVERHEAD OR UNDERGROUND POWER SOURCES.
2. THE LOCATION OF KNOWN SUBSURFACE STRUCTURES, PIPE, POWER, GAS, PHONE, ETC. ARE SHOWN ON THE PLANS. THE CONTRACTOR SHALL BE RESPONSIBLE FOR OBTAINING INFORMATION AND SATISFYING HIMSELF AS TO THE LOCATION OF THE AFOREMENTIONED ITEMS, SHOWN AND NOT SHOWN. ALL REPAIRS TO UTILITIES DAMAGED BY CONTRACTOR SHALL BE MADE AS REQUIRED BY THE OWNER OF THE UTILITY OR STRUCTURE. THE COST OF SUCH REPAIRS NECESSARY SHALL BE BORNE BY THE CONTRACTOR.
3. ALL STREETS, DRIVES, WALKS, DRAINAGE STRUCTURES, FENCES, ETC. THAT ARE DISTURBED SHALL BE RESTORED TO THEIR ORIGINAL OR BETTER CONDITION USING LIKE MATERIALS. COST OF SUCH REPAIRS SHALL BE BORNE BY THE CONTRACTOR UNLESS PROVISION FOR PAYMENT IS MADE IN THE PROPOSAL.
4. THE CONTRACTOR IS REQUIRED TO NOTIFY THE ONE CALL CENTER AT 811 (48) HOURS PRIOR TO DIGGING IN ORDER THAT UNDERGROUND UTILITIES IN THE AREA CAN BE LOCATED.
5. CONTRACTOR SHALL RETAIN A FULL SET OF LATEST APPROVED CONSTRUCTION PLANS ON SITE DURING CONSTRUCTION ACTIVITIES.
6. CONSTRUCTION METHODS AND MATERIALS NOT SPECIFIED IN THESE PLANS ARE TO MEET OR EXCEED THE SITE WORK SPECIFICATIONS PROVIDED BY MCLELLAND CONSULTING ENGINEERS, INC. OR AS SPECIFIED BY THE OWNER'S RESIDENT REPRESENTATIVE.
7. ALL CONSTRUCTION WORK AND UTILITY WORK OUTSIDE OF PROPERTY BOUNDARIES SHALL BE PERFORMED IN COOPERATION WITH AND IN ACCORDANCE WITH REGULATIONS OF THE AUTHORITIES CONCERNED.
8. PUBLIC CONVENIENCE AND SAFETY:
THE CONTRACTOR SHALL CONDUCT THE WORK IN A MANNER THAT WILL INSURE, AS FAR AS PRACTICABLE, THE LEAST OBSTRUCTION TO TRAFFIC AND SHALL PROVIDE FOR THE CONVENIENCE AND SAFETY OF THE GENERAL PUBLIC AND RESIDENTS ALONG AND ADJACENT TO HIGHWAYS IN THE CONSTRUCTION AREA IN AN ADEQUATE AND SATISFACTORY MANNER IN ACCORDANCE WITH THE ARKANSAS STATE HIGHWAY AND TRANSPORTATION DEPARTMENT STANDARD SPECIFICATIONS FOR HIGHWAY CONSTRUCTION.
9. UNLESS OTHERWISE NOTED, ALL CURBING INDICATED SHALL BE TYPE A CONCRETE CURB AND GUTTER.
10. ALL DIMENSIONS, UNLESS OTHERWISE NOTED, ARE FROM THE FACE OF CURB, FACE OF BUILDING, OR CENTERLINE OF STRIPE.
11. CONTRACTOR SHALL REFER TO ARCHITECT PLANS FOR EXACT BUILDING DIMENSIONS AND UTILITY ENTRANCE LOCATIONS.
12. CONTRACTOR SHALL REFER TO SPECIFICATIONS AND GEOTECHNICAL REPORT DETAILS FOR PAVING DESIGN AND PROPER MATERIALS.
13. ALL RADII FOR CURBS ARE TO FACE OF CURB UNLESS OTHERWISE NOTED.
14. ALL RADII ON CURBS ARE 3'-0" UNLESS OTHERWISE NOTED.
15. GENERAL CONTRACTOR SHALL COORDINATE AND COMPLY WITH ALL UTILITY COMPANIES INVOLVED IN PROJECT AND PAY ALL REQUIRED FEES AND COSTS.
16. FOR SITE UTILITIES, SEE UTILITY PLAN.
17. ALL CONCRETE SIDEWALKS AND PAVING TO HAVE JOINTING PER DETAIL 22A.

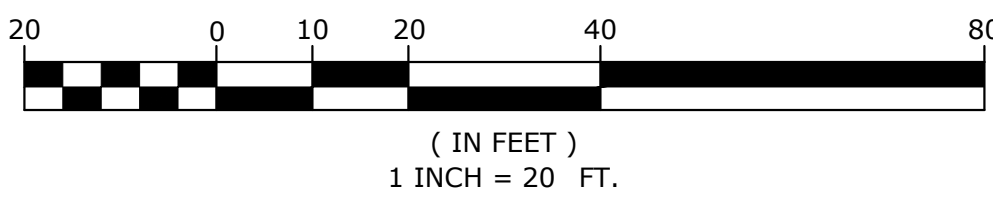
SITE KEYNOTES

- 200. LANDSCAPED AREA
- 209. LIMITS OF RETAINING WALL
- 212. EXISTING TO REMAIN
- 215. TAPER CURB FROM 6" TO 0" OVER 2'
- 220. BOLLARD (SEE DETAIL SHEET C6.1)
- 221. LIGHT POLE / FIXTURE
- 222. RETAINING WALL (SEE GRADING PLAN)
- 223. FLAG POLES
- 225. CALL BOX
- 226. SLIDE GATE (ELECTRONICALLY OPERATED- SEE M.E.P. PLANS)
- 228. 4" WHITE PARKING STRIPPING
- 229. CASS-STD 3-CABLE GUARDRAIL SAFETY SYSTEM ANCHOR BLOCK
- 230. VOID
- 231. TYPE 1 PEDESTRIAN RAMP
- 232. ACCESSIBLE PARKING SIGN
- 233. TYPICAL SIGN POST
- 234. MONUMENT SIGN (SEE ARCHITECT'S PLANS)
- 235. TYPICAL CORP 15601 - 10' BARRIER ARM GATE
- 236. CONCRETE SIDEWALK (SEE DETAIL SHEET C6.1)
- 237. DUMPSTER ENCLOSURE
- 238. CASS-STD 3-CABLE GUARDRAIL SAFETY SYSTEM
- 239. DIRECTION SIGN

SITE DETAILS

20A.	TYPE A CONCRETE CURB AND GUTTER
21A.	STANDARD DUTY ASPHALT PAVEMENT
21B.	HEAVY DUTY ASPHALT
21D.	HEAVY DUTY CONCRETE
22A.	CONCRETE SIDEWALK
23A.	90° ACCESSIBLE PARKING SPACE STRIPPING
23B.	ACCESSIBLE PARKING SYMBOL
23C.	CONCRETE WHEEL STOP
25A.	LIGHT POLE FOUNDATION
26A.	RETAINING WALL
26B.	6" CHAIN LINK FENCE

GRAPHIC SCALE



ORIGINAL SIGNATURE ON FILE

PROJECT TITLE
NEWPORT STATE POLICE TROOP B HEADQUARTERS
NEWPORT, ARKANSAS

SITE PLAN

REVISIONS

08/27/18

DATE

08/10/18

JOB NO.

WDD 15-064

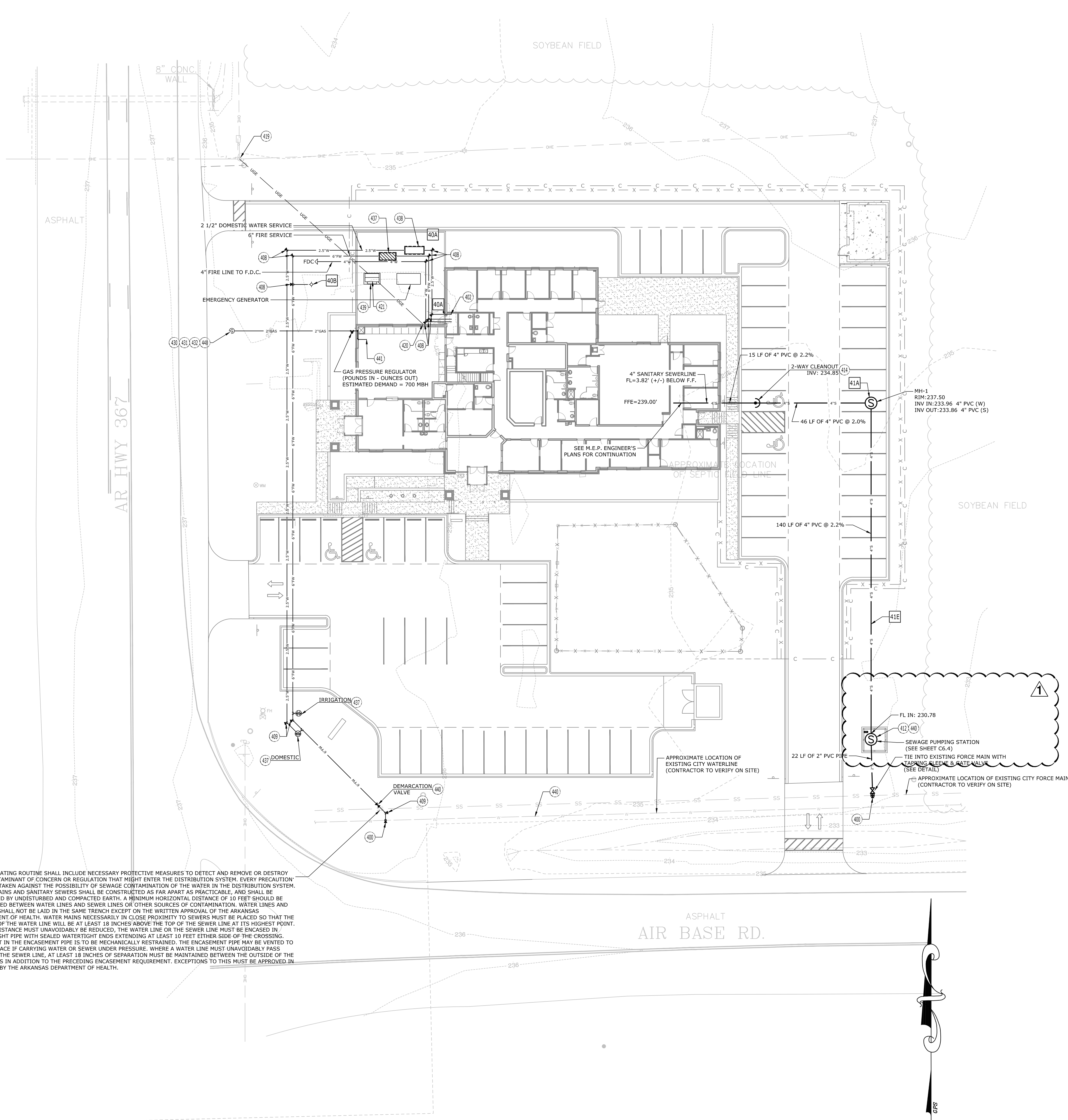
MCE 16-5803

C3.0

WITTENBERG, DELONY & DAVIDSON, INC.

W:\2018\15-5803 Newport State Police Troop Headquarters Utility Drawings\1504-5803-0500A.dwg Aug 27, 2018 - 9:25am

THE OPERATING ROUTINE SHALL INCLUDE NECESSARY PROTECTIVE MEASURES TO DETECT AND REMOVE OR DESTROY ANY CONTAMINANT OF CONCERN OR REGULATION THAT MIGHT ENTER THE DISTRIBUTION SYSTEM. EVERY PRECAUTION MUST BE TAKEN AGAINST THE POSSIBILITY OF SEWAGE CONTAMINATION OF THE WATER IN THE DISTRIBUTION SYSTEM. WATER MAINS AND SANITARY SEWERS SHALL BE CONSTRUCTED AS FAR APART AS PRACTICABLE, AND SHALL BE SEPARATED BY UNDISTURBED AND COMPACTED EARTH. A MINIMUM HORIZONTAL DISTANCE OF 10 FEET SHOULD BE MAINTAINED BETWEEN WATER LINES AND SEWER LINES OR OTHER SOURCES OF CONTAMINATION. WATER LINES AND SEWERS SHALL NOT BE LAID IN THE SAME TRENCH EXCEPT ON THE WRITTEN APPROVAL OF THE ARKANSAS DEPARTMENT OF HEALTH. WATER MAINS NECESSARILY IN CLOSE PROXIMITY TO SEWERS MUST BE PLACED SO THAT THE BOTTOM OF THE WATER LINE WILL BE AT LEAST 18 INCHES ABOVE THE TOP OF THE SEWER LINE AT ITS HIGHEST POINT. IF THIS DISTANCE MUST UNAVOIDABLY BE REDUCED, THE WATER LINE OR THE SEWER LINE MUST BE ENCASED IN WATER TIGHT PIPE WITH SEALED WATER TIGHT ENDS EXTENDING AT LEAST 10 FEET EITHER SIDE OF THE CROSSING. ANY JOINT IN THE ENCASEMENT PIPE IS TO BE MECHANICALLY RESTRAINED. THE ENCASEMENT PIPE MAY BE VENTED TO THE SURFACE IF CARRYING WATER OR SEWER UNDER PRESSURE. WHERE A WATER LINE MUST UNAVOIDABLY PASS BENEATH THE SEWER LINE, AT LEAST 18 INCHES OF SEPARATION MUST BE MAINTAINED BETWEEN THE OUTSIDE OF THE TWO PIPES IN ADDITION TO THE PRECEDING ENCASEMENT REQUIREMENT. EXCEPTIONS TO THIS MUST BE APPROVED IN WRITING BY THE ARKANSAS DEPARTMENT OF HEALTH.



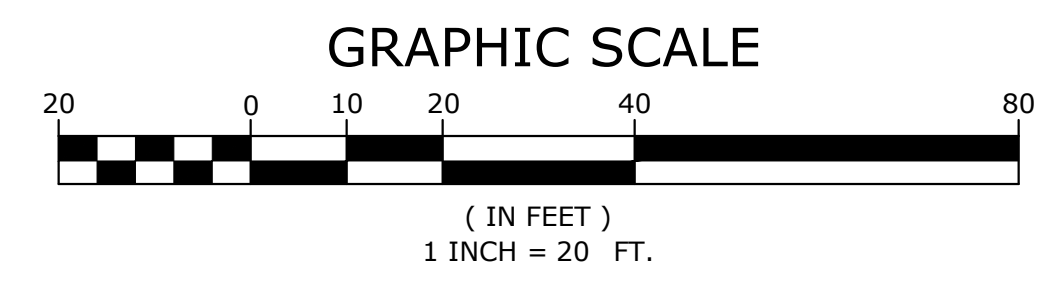
EXISTING LEGEND		
SS	SANITARY SEWER LINE	WATER FAUCET
W	WATER LINE	SANITARY SEWER MH
G	GAS LINE	CLEAN-OUT
UT	UNDERGROUND PHONE	DRAINAGE MH
UE	UNDERGROUND ELECTRIC	POWER POLE
UTV	UNDERGROUND TV	GUY WIRE WITH ANCHOR
UFO	UNDERGROUND FIBER OPTIC	GAS METER
UC	UNDERGROUND COX CABLE	LIGHT POLE
OL	OVERHEAD UTILITIES	GROUND LIGHTS
F	FENCE	PEDESTAL (AS NOTED)
DF	DITCH FLOWLINE	SIGN (AS NOTED)
PH	FIRE HYDRANT	POST (AS NOTED)
WM	WATER METER	FOUND IRON PIN
WV	WATER VALVE	CONTROL POINT

PROPOSED LEGEND		
SD	STORM DRAIN	
X"G	GAS SERVICE	
X"S	SANITARY SERVICE	
UGE	UNDERGROUND ELECTRIC	
UGE&T	UNDERGROUND ELECTRIC AND TELEPHONE SERVICE	
UGT	UNDERGROUND TELEPHONE SERVICE	
X"W	DOMESTIC WATER SERVICE	
X"FW	FIRE WATER SERVICE	
EC	ELECTRIC CONDUIT	
FDC	FIRE DEPARTMENT CONNECTIONS (FDC)	
PH	FIRE HYDRANT	
WM	WATER METER	
WV	WATER VALVE	
ET	ELECTRIC TRANSFORMER	
PP	POWER POLE	
LP	LIGHT POLE	
CO	CLEANOUT	
GM	GAS METER	
SM	SANITARY MANHOLE	

- ### GENERAL UTILITY NOTES
- THE LOCATION OF KNOWN SUBSURFACE STRUCTURES, PIPE, POWER, GAS, PHONE, ETC. ARE SHOWN ON THE PLANS. THE CONTRACTOR SHALL BE RESPONSIBLE FOR OBTAINING INFORMATION AND SATISFYING HIMSELF AS TO THE LOCATION OF THE AFOREMENTIONED ITEMS, SHOWN AND NOT SHOWN. ALL REPAIRS TO UTILITIES DAMAGED BY CONTRACTOR SHALL BE MADE AS REQUIRED BY THE OWNER OF THE UTILITY OR STRUCTURE. THE COST OF SUCH REPAIRS NECESSARY SHALL BE BORNE BY THE CONTRACTOR.
 - ALL OSHA REGULATIONS SHALL BE STRICTLY FOLLOWED AND SPECIAL CARE TAKEN TO PREVENT INTERACTION W/ OVERHEAD OR UNDERGROUND POWER SOURCES.
 - CONSTRUCTION SHALL NOT START ON ANY PUBLIC UTILITY SYSTEM UNTIL WRITTEN APPROVAL HAS BEEN RECEIVED FROM THE APPROPRIATE UTILITY AUTHORITIES AND THE OWNER. AND THE CONTRACTOR HAS BEEN NOTIFIED BY MCLLELLAND CONSULTING ENGINEERS, INC.
 - CONTRACTOR SHALL NOT OPEN, TURN OFF, INTERFERE WITH, OR ATTACH ANY PIPE OR HOSE TO OR TAP ANY WATER MAIN UNLESS DULY AUTHORIZED TO DO SO BY THE CITY. ANY ADVERSE CONSEQUENCES OF ANY SCHEDULED OR UNSCHEDULED DISRUPTIONS OF SERVICE TO THE PUBLIC ARE TO BE THE LIABILITY OF THE CONTRACTOR. MCLLELLAND CONSULTING ENGINEERS, INC. AND THE OWNER ARE HEREBY CAUTIONED ACCORDINGLY.
 - ALL TRENCHING, BACKFILLING AND PIPE LAYING IS TO MEET ALL OSHA REQUIREMENTS.
 - THE LOCATION, DESCRIPTION AND SIZE OF ALL ABOVE-GROUND AND UNDER-GROUND FACILITIES, STRUCTURES AND UTILITIES HAVE BEEN DETERMINED WITH DUE CARE AND DILIGENCE, USING CURRENT TECHNIQUES, EQUIPMENT AND PROPER ACCURACY CONTROL PROCEDURES. HOWEVER, INFORMATION SHOWN HEREON IS NOT WARRANTED TO BE CORRECT IN EVERY DETAIL BECAUSE OF INACCURACIES IN OR LACK OF EXISTING DATA OR MAPS AND THE INABILITY TO VERIFY IN THE FIELD. PERSONS USING INFORMATION CONTAINED HEREON ARE HEREBY CAUTIONED ACCORDINGLY.
 - REFER TO BUILDING PLANS FOR SITE LIGHTING ELECTRICAL PLANS.
 - ALL STREETS, DRIVES, WALKS, DRAINAGE STRUCTURES, FENCES, ETC. THAT ARE DISTURBED SHALL BE RESTORED TO THEIR ORIGINAL OR BETTER CONDITION USING LIKE MATERIALS. COST OF SUCH REPAIRS SHALL BE BORNE BY THE CONTRACTOR UNLESS PROVISION FOR PAYMENT IS MADE IN THE PROPOSAL.
 - ANY DAMAGE TO THE EXISTING PUBLIC STREET DUE TO CONSTRUCTION SHALL BE REPAIRED/REPLACED AT THE OWNER/DEVELOPERS EXPENSE.
 - ALL UTILITY SERVICE LINES TO BE CONNECTED TO NEW MAINS OR RELOCATED AS NEEDED FOR INSTALLATION OF STORM SEWER SYSTEM.
 - ALL CONDUITS PLACED BY CONTRACTOR MUST HAVE 36" OF COVER AT FINAL GRADE AND MARKED WITH POSTS TO IDENTIFY THE ENDS OF CONDUITS. THERE MUST BE A MINIMUM SEPARATION OF 12" BETWEEN ELECTRICAL CONDUITS AND CONDUITS FOR OTHER UTILITIES.
 - SERVICE TAPS ON EXISTING MAINS SHALL BE MADE BY THE CITY, AND FEES PAID BY OWNER.
 - ALL UNDERGROUND LINES TO BE INSPECTED PRIOR TO BACK FILLING.
 - DIMENSIONS SHOWN ARE TO CENTER OF PIPE OR FITTING.
 - TESTING OF WATER AND SEWER LINES SHALL BE AT CONTRACTORS EXPENSE.
 - TOPS OF EXISTING MANHOLES SHALL BE RAISED AS NECESSARY TO BE FLUSH WITH PROPOSED PAVEMENT ELEVATIONS, AND MANHOLES IN UNPAVED AREAS ARE TO BE 1" ABOVE FINISHED GRADES.
 - ALL UTILITIES UNDER PAVED AREAS SHALL RECEIVE CLASS 7 BASE BACKFILL FULL DEPTH.
 - MAINTAIN MINIMUM HORIZONTAL SEPARATION OF 10' BETWEEN WATER AND SEWER AND 5' BETWEEN OTHER UNDERGROUND UTILITIES SUCH AS STORM SEWER, ELECTRICAL, GAS, AND CONDUITS. WHEN WATERLINES CROSS SANITARY SEWERS THEY SHALL HAVE A MINIMUM OF 18 INCHES VERTICAL SEPARATION WITH WATER ON TOP. ELSE ENCASEMENT PIPE WILL BE REQUIRED. ANY DEVIATION MUST BE APPROVED BY THE ARKANSAS DEPARTMENT OF HEALTH IN WRITING.
 - ALL WATER, GAS AND ELECTRICAL METERS WITHIN THE PROJECT AREA ARE TO BE ABANDONED AND RETURNED TO THE APPROPRIATE AUTHORITY.
 - COORDINATION OF ALL CONDUIT PLACEMENT SHALL BE MADE WITH UTILITY PROVIDERS.
 - ALL WATER FITTINGS SHALL BE RESTRAINED THROUGH THE USE OF THRUST BLOCKING PER DETAIL SHEETS OR APPROVED EQUAL.
 - PROPOSED UTILITIES THAT ARE TO BE BURIED IN THE SAME TRENCH SHALL BE COORDINATED WITH AND APPROVED BY THE INVOLVED UTILITIES.
 - CONTRACTOR SHALL FIELD VERIFY DEPTH AND LOCATION OF ALL UTILITIES PRIOR TO CONSTRUCTION OF PROPOSED UTILITIES.
 - PROPOSED UTILITIES SHALL BE CONSTRUCTED IN ACCORDANCE WITH GOVERNING AGENCY.
 - INSTALL POLYETHYLENE ENCASEMENT AT ALL LOCATIONS WHERE NEW WATERLINE CROSSES EXISTING NATURAL GAS LINES (20' EACH SIDE OF CROSSING) AND WHERE OTHERWISE SHOWN.

- ### UTILITY KEYNOTES
- WATER SERVICE POINT OF CONNECTION (PER CITY REQUIREMENTS)
 - SPRINKLER ENTRY PER MEP PLANS (SEE SIZE THIS SHEET)
 - DOMESTIC WATER SERVICE ENTRY, PER MEP PLANS
 - PROPOSED WATER METER (PER CITY REQUIREMENTS)
 - MECHANICAL JOINT TAPPING SLEEVE WITH MECHANICAL TAPPING VALVE WITH THRUST BLOCKING AND ADJUSTABLE BOX.
 - MECHANICAL JOINT REDUCER (SEE SIZE THIS SHEET)
 - MECHANICAL JOINT CAP/PLUG WITH THRUST BLOCKING (SEE SIZE THIS SHEET)
 - MECHANICAL JOINT BEND WITH THRUST BLOCKING (SEE SIZE THIS SHEET)
 - 45° MECHANICAL JOINT BEND WITH THRUST BLOCKING (SEE SIZE THIS SHEET)
 - SANITARY SEWER POINT OF CONNECTION
 - SANITARY SEWER CLEAN OUT
 - SANITARY SEWER POINT OF CONNECTION
 - ELECTRIC SERVICE POINT OF CONNECTION
 - ELECTRIC SERVICE POINT OF ENTRY
 - PROPOSED ELECTRIC TRANSFORMER
 - NATURAL GAS SERVICE POINT OF CONNECTION
 - NATURAL GAS SERVICE (PER GAS COMPANY)
 - PROPOSED NATURAL GAS METER
 - MAINTAIN MIN. 18" VERTICAL SEPARATION
 - DOUBLE CHECK DETECTOR ASSEMBLY (SEE MEP PLANS)
 - DOMESTIC BACK FLOW PREVENTOR (SEE MEP PLANS)
 - TRANSFORMER PAD (PER ELECTRIC PROVIDER REQUIREMENTS)
 - LOCATION AND DEPTH OF EXISTING UTILITY UNKNOWN, CONTRACTOR TO VERIFY PRIOR TO CONSTRUCTION.
 - UTILITY BUILDING ENTRY (SEE MEP PLANS FOR EXACT LOCATION)
 - SANITARY SEWER TO BE INSTALLED UNDER WALL FOOTING.
 - FDC PER FIRE PROTECTION PLANS
 - SANITARY SEWER SERVICE TAP PER LOCAL UTILITY REQUIREMENTS.

- ### UTILITY DETAILS
- 40 SERIES WATER DETAILS:**
- 40A. THRUST BLOCKING
 - 40B. FIRE HYDRANT ASSEMBLY
 - 40D. FIRE DEPARTMENT CONNECTION
- 41 SERIES SANITARY DETAILS:**
- 41A. CONCENTRIC CAST-IN-PLACE SANITARY SEWER MANHOLE
 - 41D. SANITARY SERVICE CLEAN-OUT
 - 41E. SANITARY SEWER TRENCHING AND BEDDING
 - 41F. SANITARY SEWER TAPPING SADDLE



WITTENBERG, DELONY & DAVIDSON, INC.

PROJECT TITLE

NEWPORT STATE POLICE TROOP B HEADQUARTERS

NEWPORT, ARKANSAS

CONTENTS

UTILITY PLAN

REVISIONS

08/27/18

DATE

08/10/18

JOB NO.

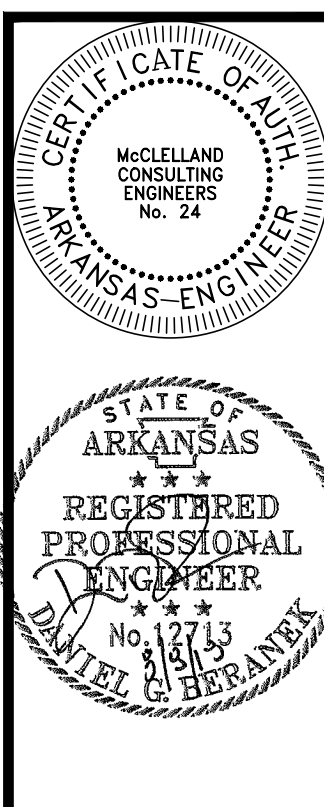
WDD 15-064

MCE

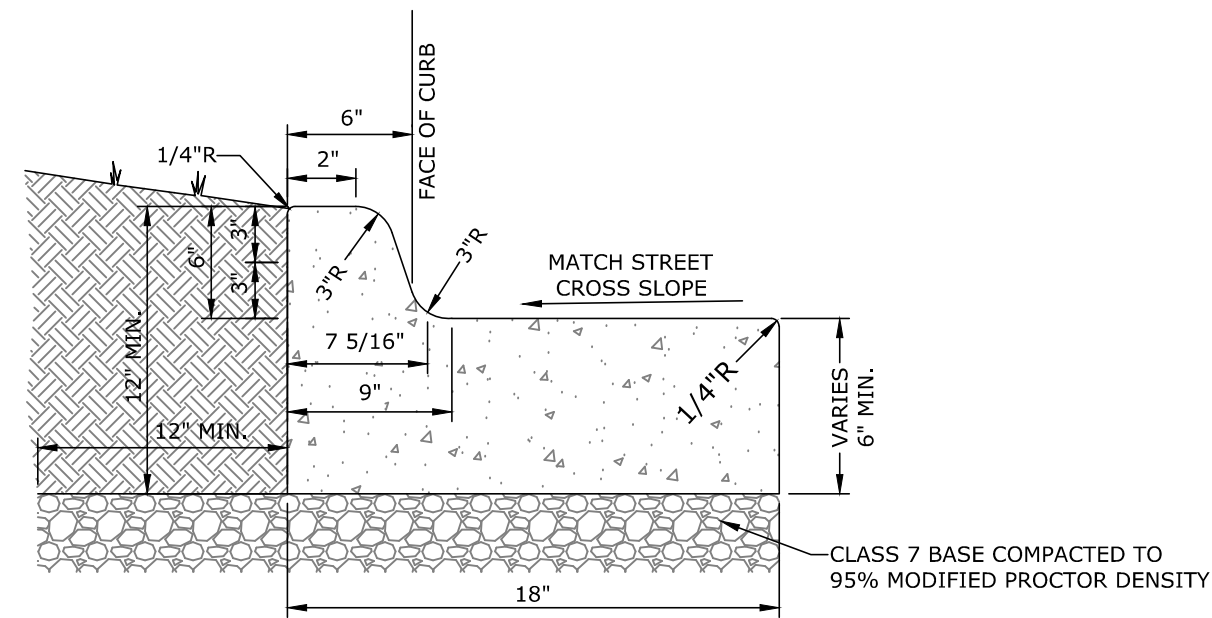
16-5803

SHEET

C5.0

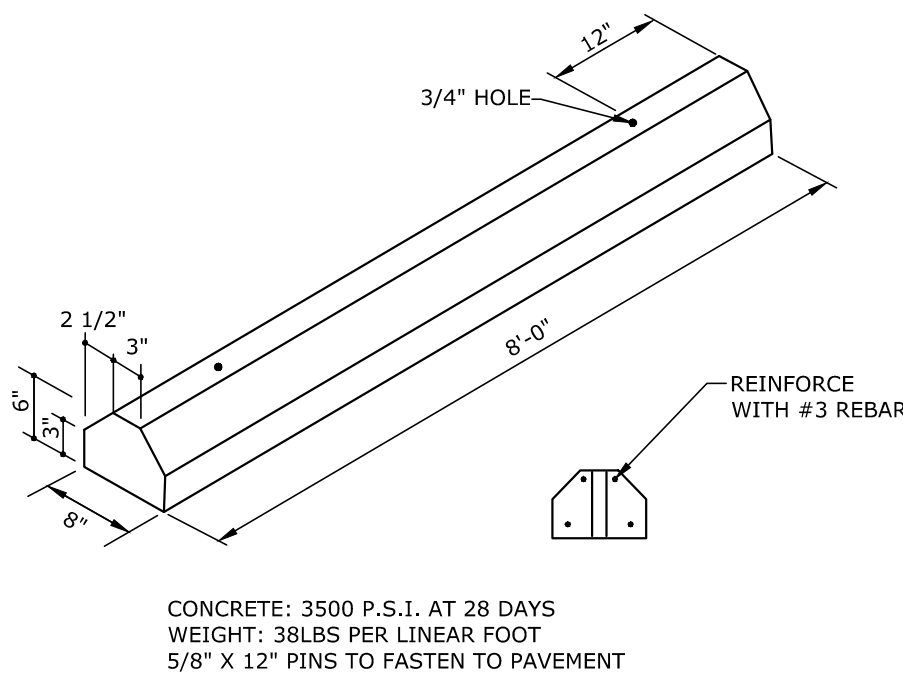


W:\2018\15-5803 Newport State Police Troop Headquarters\Working Drawings\0161-5803-DETAILS.dwg Aug 27, 2018 - 9:55am

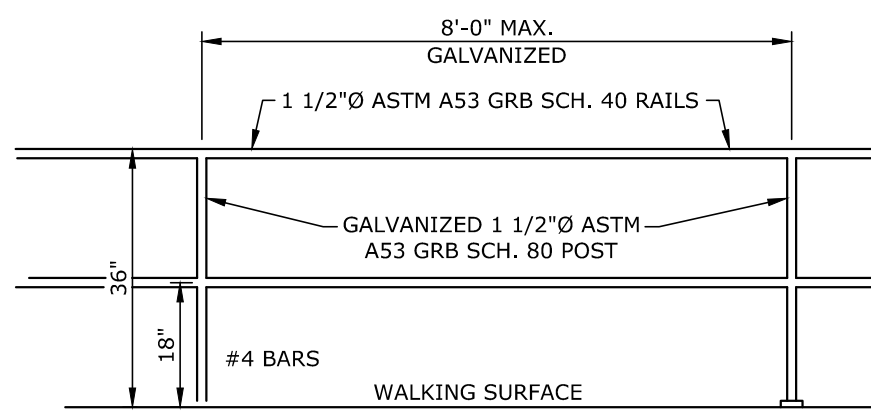


- NOTE:
1. CONCRETE FOR CURB AND GUTTER TO BE CLASS A, 3500 PSI, 5.5 BAG MIX WITH 4-7 % AIR ENTRAINMENT
 2. ALL CURB AND GUTTER SHALL HAVE A BROOMED FINISH UNLESS OTHERWISE SPECIFIED.
 3. SAW CUT JOINTS AT 15' O.C. SEAL WITH ONE PART COLD APPLIED SILICONE JOINT SEALER OR OTHER APPROVED SEALANT. ALL JOINTS TO BE SEALED PRIOR TO FINAL ASPHALT PLACEMENT.
 4. PROVIDE 1/2" PREFORMED EXPANSION JOINT MATERIAL (ASPHALT IMPREGNATED FIBERBOARD OR OTHER APPROVED MATERIAL) AT STATIONARY STRUCTURES, (DROP INLETS, END OF CURBS, DRIVEWAYS - SEE DETAIL) OR AS DIRECTED BY ENGINEER.

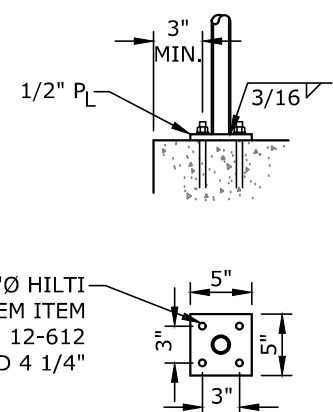
20A TYPE A 18" CONCRETE CURB AND GUTTER
N.T.S.



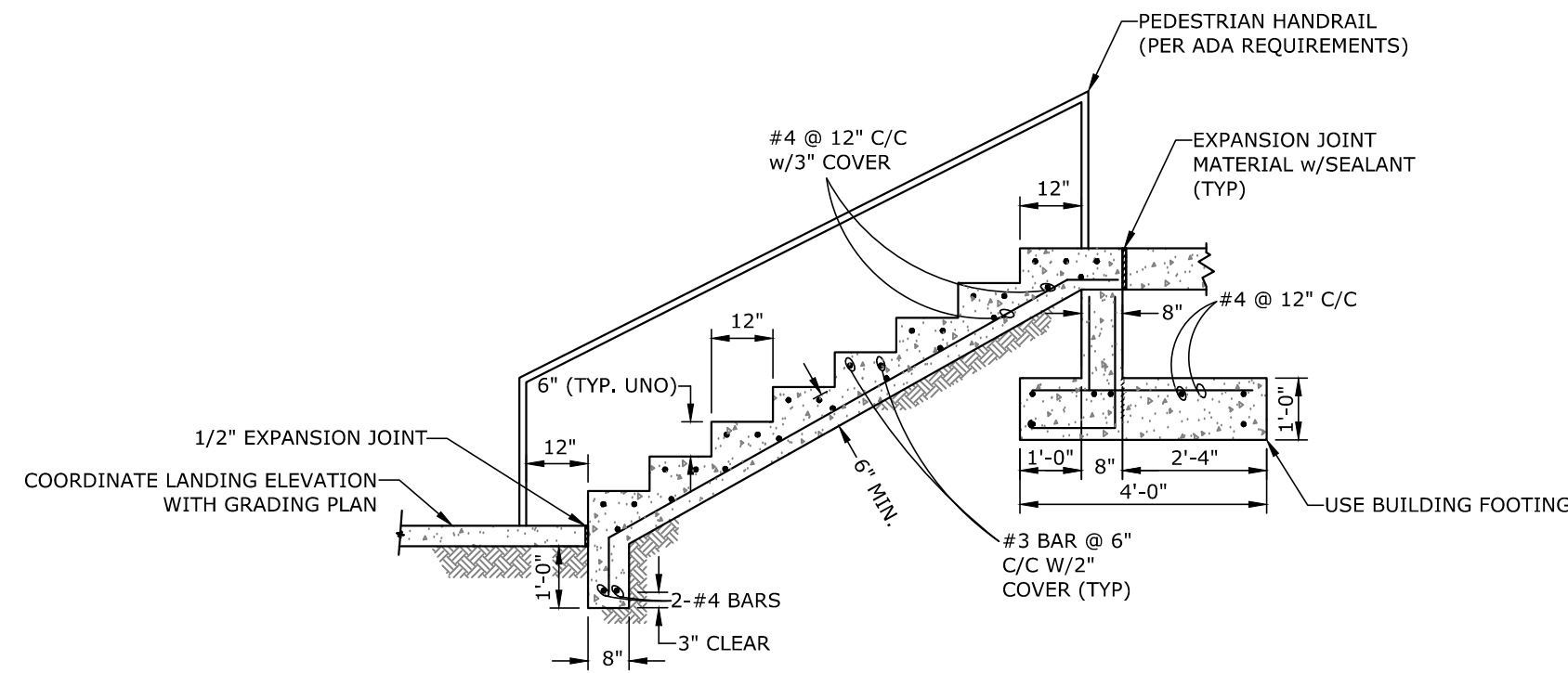
23C CONCRETE WHEEL STOP
N.T.S.



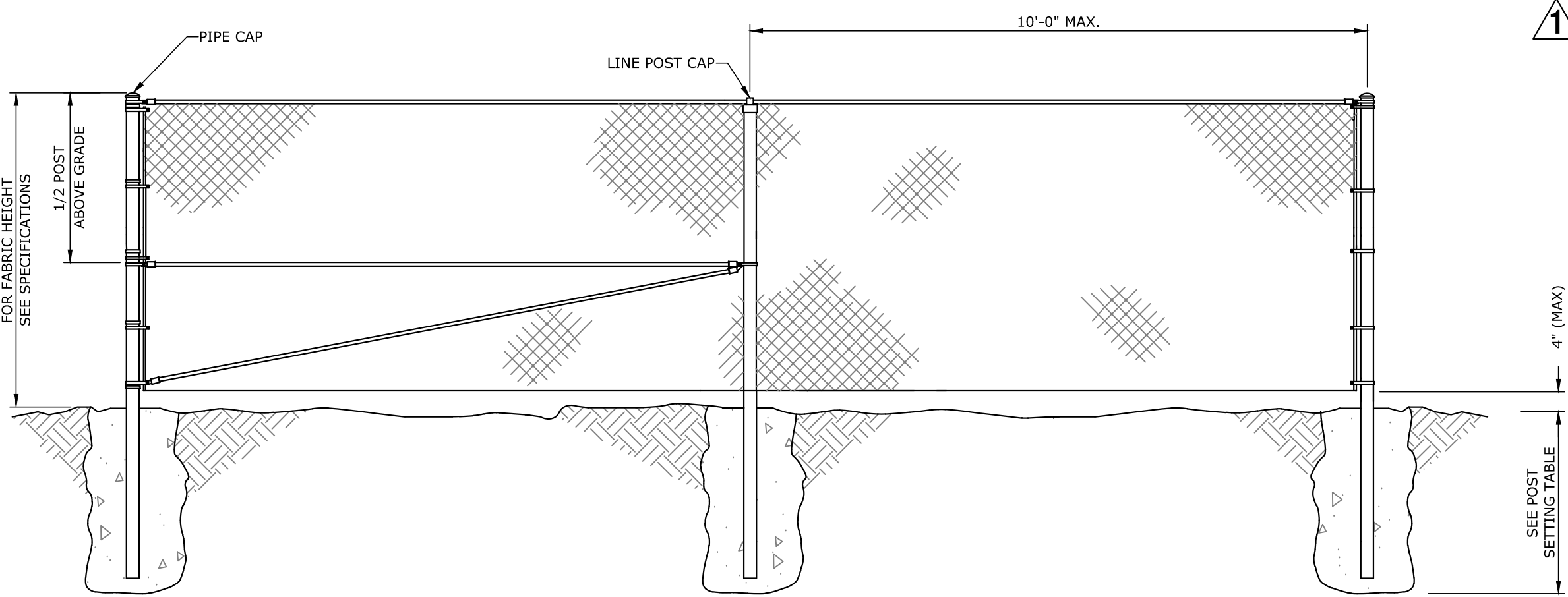
26E HAND RAIL DETAIL
N.T.S.



HAND RAIL DETAIL
N.T.S.



26E CONCRETE STAIR DETAIL
N.T.S.

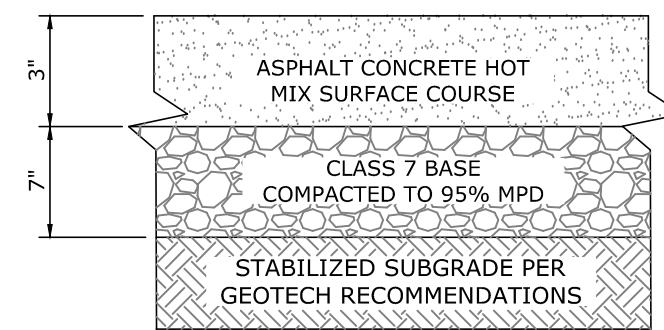


- NOTES:
1. POST SPACING: LINE POSTS SHALL BE EVENLY SPACED, CENTER TO CENTER.
 2. TERMINAL LINE POSTS, & TOP/BRAVE RAIL SHALL BE ACCORDING TO THE SPECIFICATIONS.
 3. THE METRIC CONVERSIONS ARE PROVIDE IN PARENTHESSIS FOLLOWING THE ENGLISH UNITS.
 4. POST SETTING SHALL BE ACCORDING TO THE FOLLOWING TABLE.

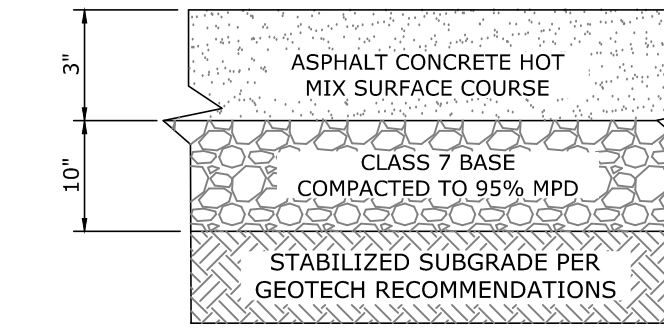
POST SETTING REQUIREMENT			
TYPE OF POST	HOLE DIA. AT TOP*	HOLE DEPTH	MIN. POST EMBEDMENT
LINE	18" (229 mm)	42" (965 mm)	40" (914 mm)
TERMINAL	18" (305 mm)	42" (965 mm)	40" (914 mm)

*MIN. HOLE DIAMETER IN SOFT OR LOOSE SOIL SHALL BE 24" (457 mm).

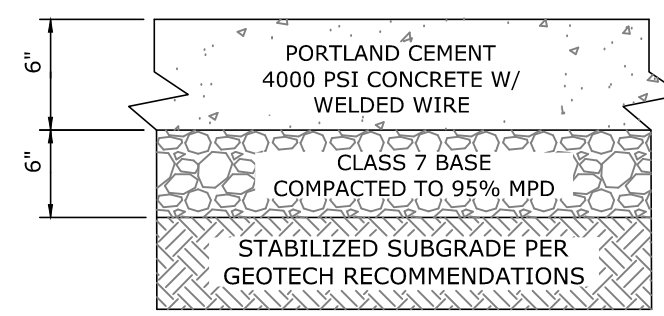
26B CHAIN LINK FENCE DETAIL
N.T.S.



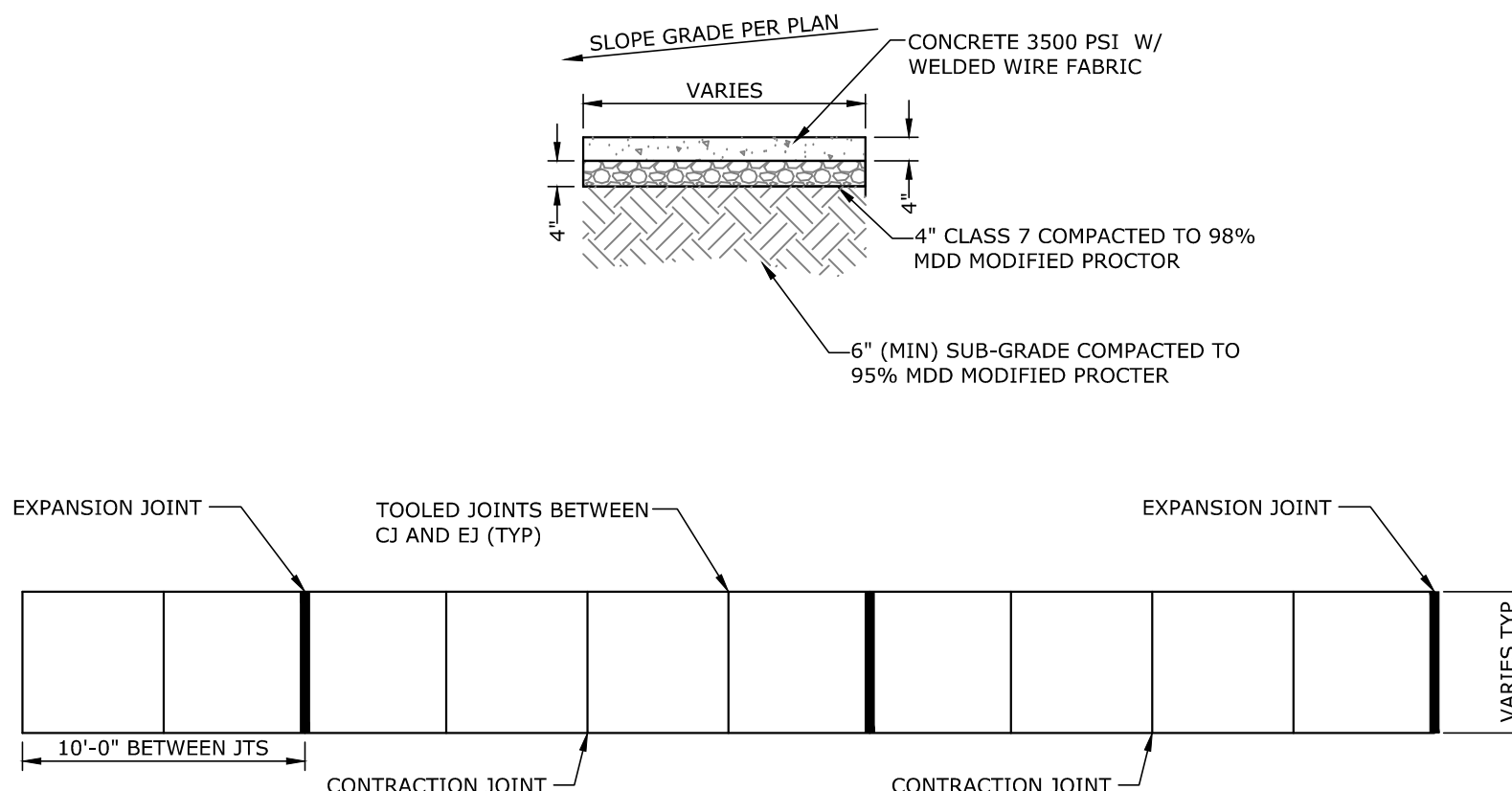
21A STANDARD DUTY ASPHALT PAVING
N.T.S.



21B HEAVY DUTY ASPHALT PAVING
N.T.S.

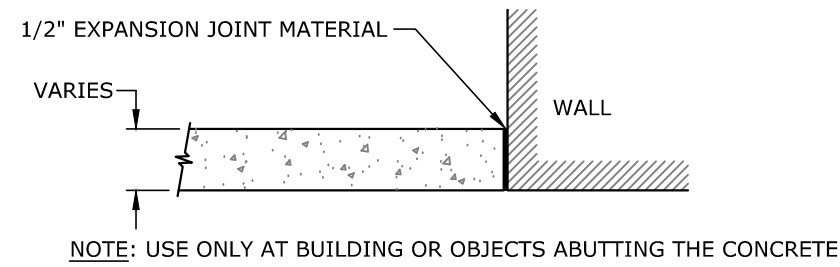


21D HEAVY DUTY CONCRETE PAVING
N.T.S.

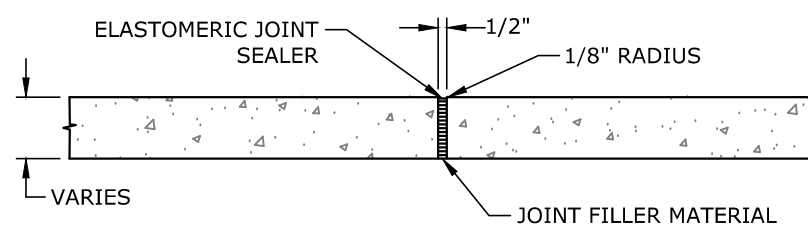


- DISCONTINUE REINFORCEMENT - AT JOINTS (SLABS ONLY)
- EITHER SAWCUT OR USE PREMOLODED INSERT TO ACHIEVE A D/4" DEEP x 1/2" WIDE JOINT. SEAL JOINT WITH A FLEXIBLE ELASTOMERIC SEALANT

TYPICAL CONTRACTION JOINT
N.T.S.

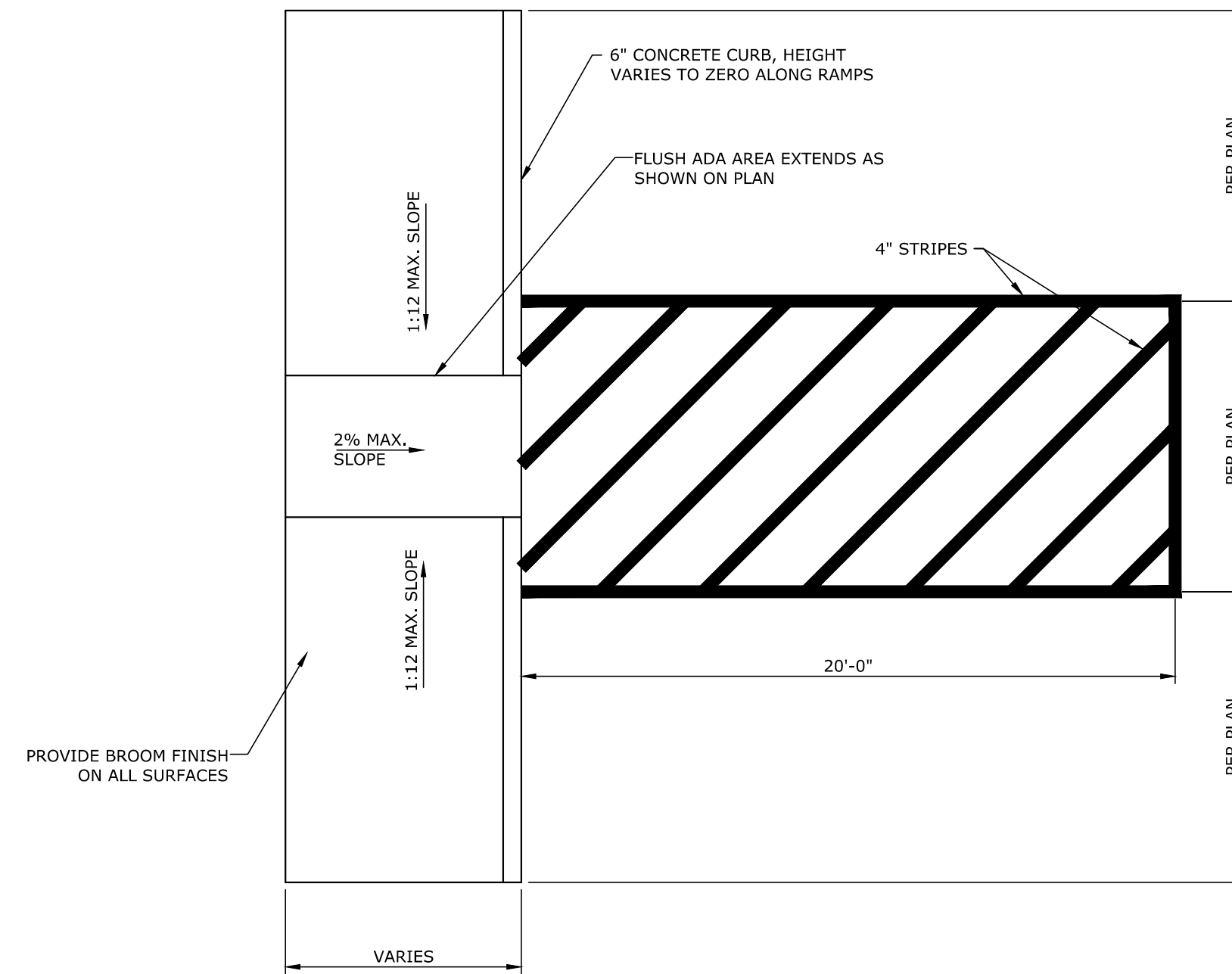


ISOLATION JOINT
N.T.S.

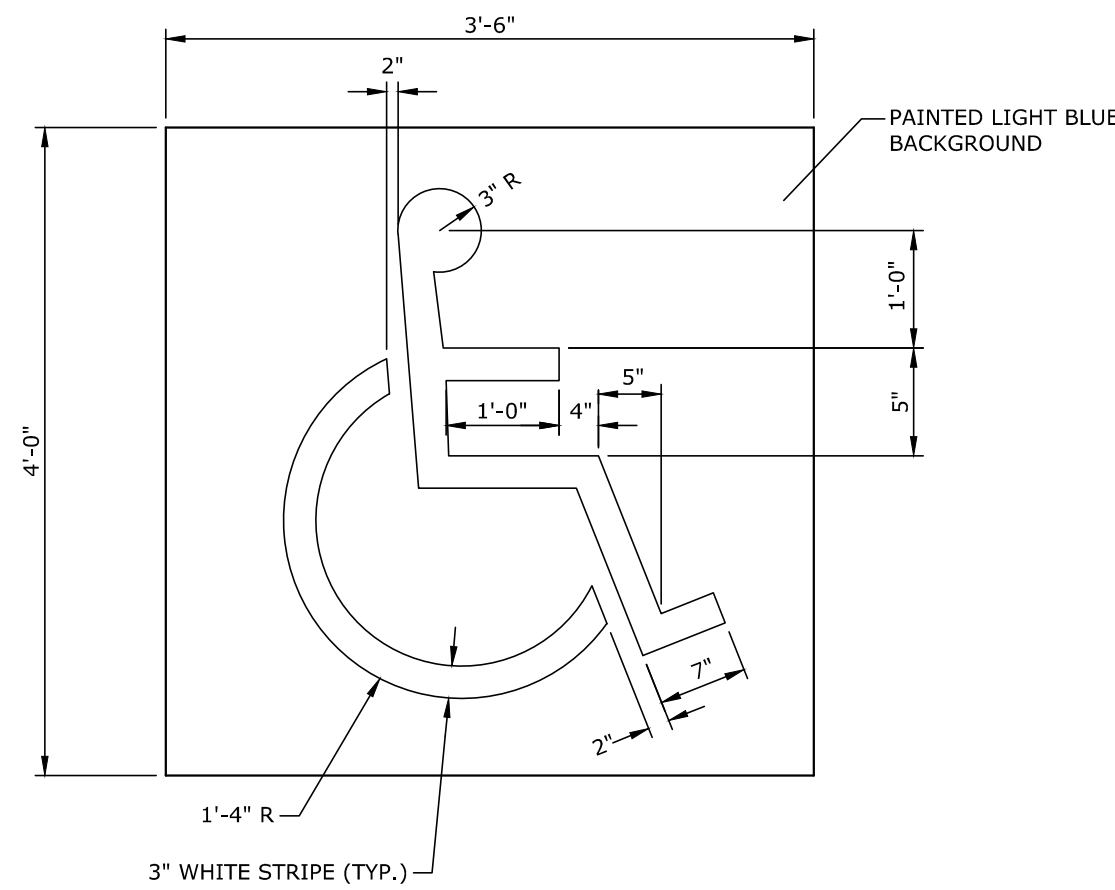


EXPANSION JOINT (EJ)
N.T.S.

22A SIDEWALK DETAIL
N.T.S.



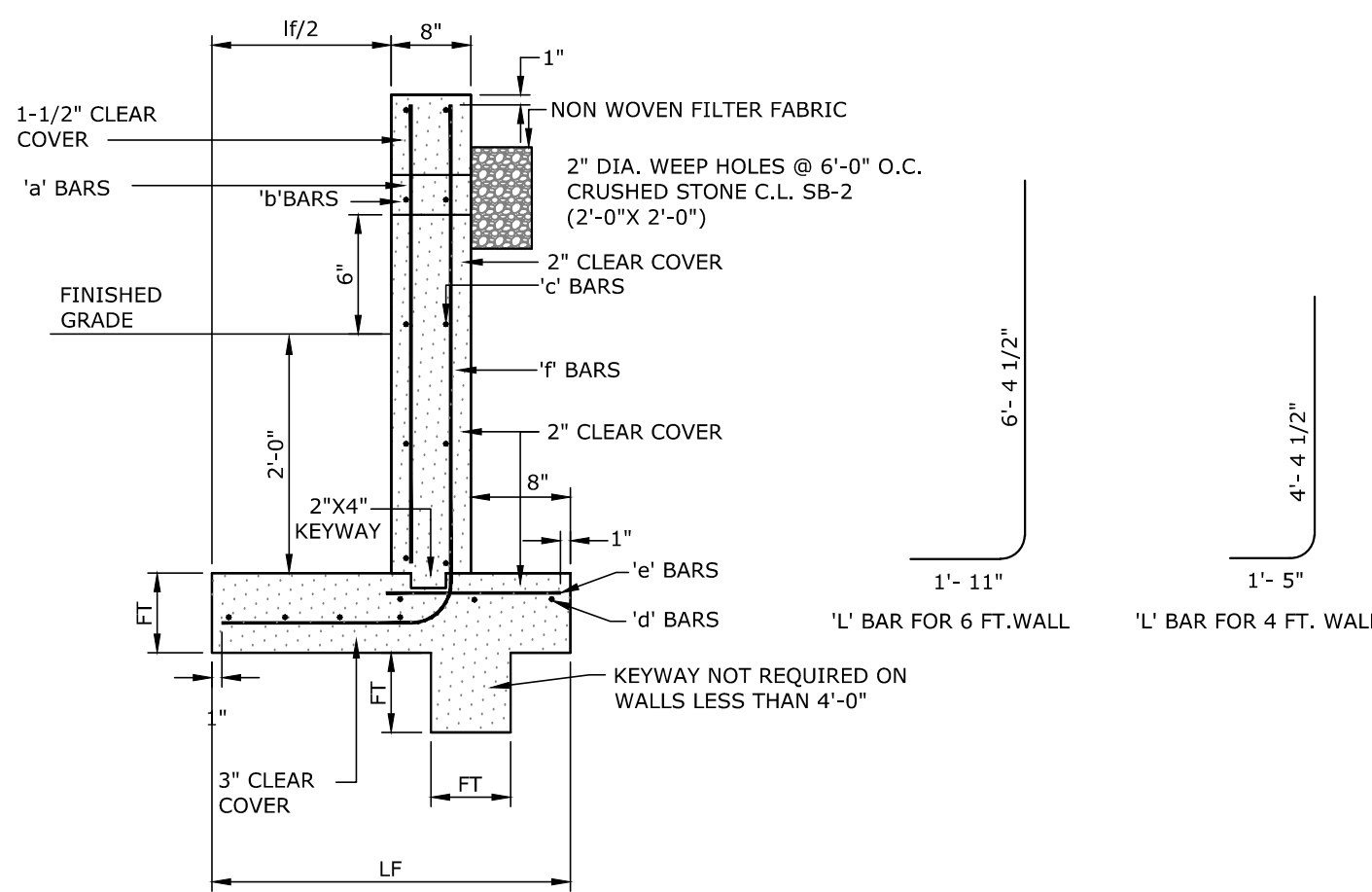
23A FLUSH CURB PARKING SPACES AND RAMPS
N.T.S.



23B ADA PARKING STALL SYMBOL
N.T.S.

BAR SCHEDULE			
WALL HEIGHTS			
4FT - 6FT.		2FT - 4FT.	
BAR	SPACING	BAR	LENGTH
a	#4's @ 24" O.C.	a	#4's @ 24" O.C.
b	#4's @ 15" O.C.	b	#4's @ 15" O.C.
c	#4's @ 18" O.C.	c	#4's @ 18" O.C.
d	5-#4's (AS SHOWN)	d	4-#4 BARS
e	#4's @ 12" O.C.	e	#4's @ 12" O.C.
f	#4's @ 12" O.C.	f	#4's @ 12" O.C.

DIMENSION DATA		
WALL HGT. FT.	FT.	LF.
6	8"	4'-10"
4	8"	2'-10"



26A RETAINING WALL DETAIL
N.T.S.



NEWPORT STATE POLICE TROOP B HEADQUARTERS
NEWPORT, ARKANSAS

MISCELLANEOUS DETAILS

WITTENBERG, DELONY & DAVIDSON, INC.

08/10/18
08/27/18

08/10/18
JOB NO.
WDD 15-064
MCE 16-5803

C6.1

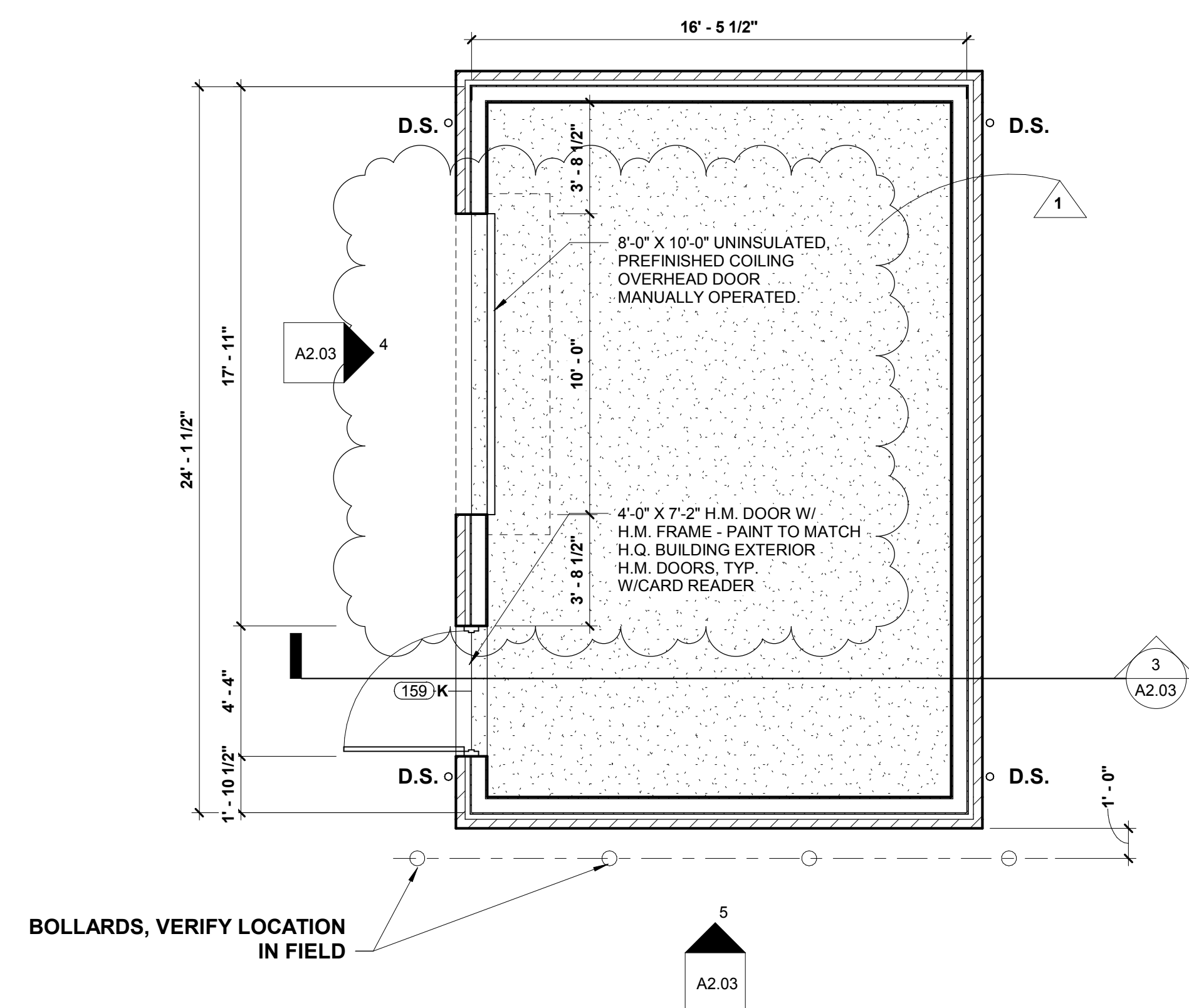


Diagram 5 illustrates the ridge vent detail. The roof is shown with a 6" / 12" pitch. The ridge vent is centered and has a width of 6" and a length of 12". The diagram is labeled A2.03. A note states: "NOTE: REFER TO MECHANICAL DRAWINGS FOR ROOF MOUNTED ATTIC FAN LOCATION."

3
A2.03

NOTE: REFER TO MECHANICAL DRAWINGS FOR LOCATION AND TYPE OF WALL LOUVERS

NOTE: CONC. SPLASHBLOCK AT LANDSCAPING

NOTE: CONC. FILLED STEEL BOLLARDS -PAINT YELLOW

FLOOR LEVEL

1

8' X 10' METAL COILING OVERHEAD DOOR

SLOPE CONCRETE AWAY FROM DOOR FOR POSITIVE DRAINAGE

4

STORAGE ELEV A

1/4" = 1'-0"

Architectural cross-section drawing of a building exterior wall and roof assembly. The drawing shows a gabled roof with a 6" / 12" pitch. The interior ceiling is left open to the framing above. The exterior wall features brick veneer (match HQ Bldg brick type) over a 2" air space over a weather barrier over 1/2" sheathing over 2x6 @ 16" O.C., TYP. The roof assembly includes a 5" concrete slab over a vapor barrier over 4" drainage fill. The foundation system is shown at the base. Various dimensions and material specifications are provided throughout the drawing.

Dimensions and Notes:

- TRUSS BEARING: 8" - 9 1/4"
- 9" - 4"
- 7" - 4"
- 1" - 0"
- 6" / 12"
- CEILING LEFT OPEN TO FRAMING ABOVE
- NO FINISH ON 2X6 WALL STUDS REFER TO STUCURAL FOR ADDITIONAL BLOCKING
- COILING OVERHEAD DOOR
- 15" - 0"
- 9" - 4"
- 1/4" / 12"
- 5" CONCRETE SLAB OVER VAPOR BARRIER OVER 4" DRAINAGE FILL
- REFER TO STRUCTURAL DRAWINGS FOR FOUNDATION SYSTEM
- 1"
- 1"
- 1"

Material and Construction Details:

- BRICK VENEER (MATCH HQ BLDG BRICK TYPE) OVER 2" AIR SPACE OVER WEATHER BARRIER OVER 1/2" SHEATHING OVER 2X6 @ 16" O.C., TYP.
- GROUT SCREEN
- FLEXIBLE THROUGH WALL FLASHING
- WEEPS @ 24" O.C. HORIZ.
- SPLASH BLOCKS AT DOWNSPOUTS
- SLOPE GRADE AWAY FROM BLDG @ 2% MIN.
- FILL BRICK AIRSPACE W/ GROUT BELOW THROUGH WALL FLASHING

Other Notes:

- LEAVE 2" GAP AT TOP OF ROOF DECK FOR RIDGE VENTILATION
- PERFORATED SOFFIT TO MATCH HQ BUILDING

G. SECTION

Diagram illustrating the elevation of a building structure. The roof is gabled and covered with shingles. A prefinished gutter and downspout system is installed along the eaves. The walls are constructed of brick. The floor level is indicated by a dashed line. Bollards are shown at the base of the wall.

- PREFINISHED GUTTER AND DOWNSPOUT
- BOLLARDS
- FLOOR LEVEL

ISSUE SHEET		NO.		DATE		DESCRIPTION	
A2.03							
8/10/ 2018		1		Date 1		Revision 1	
JOB:							
16-036		ADD OVERHEAD DOOR 8/27/18 