

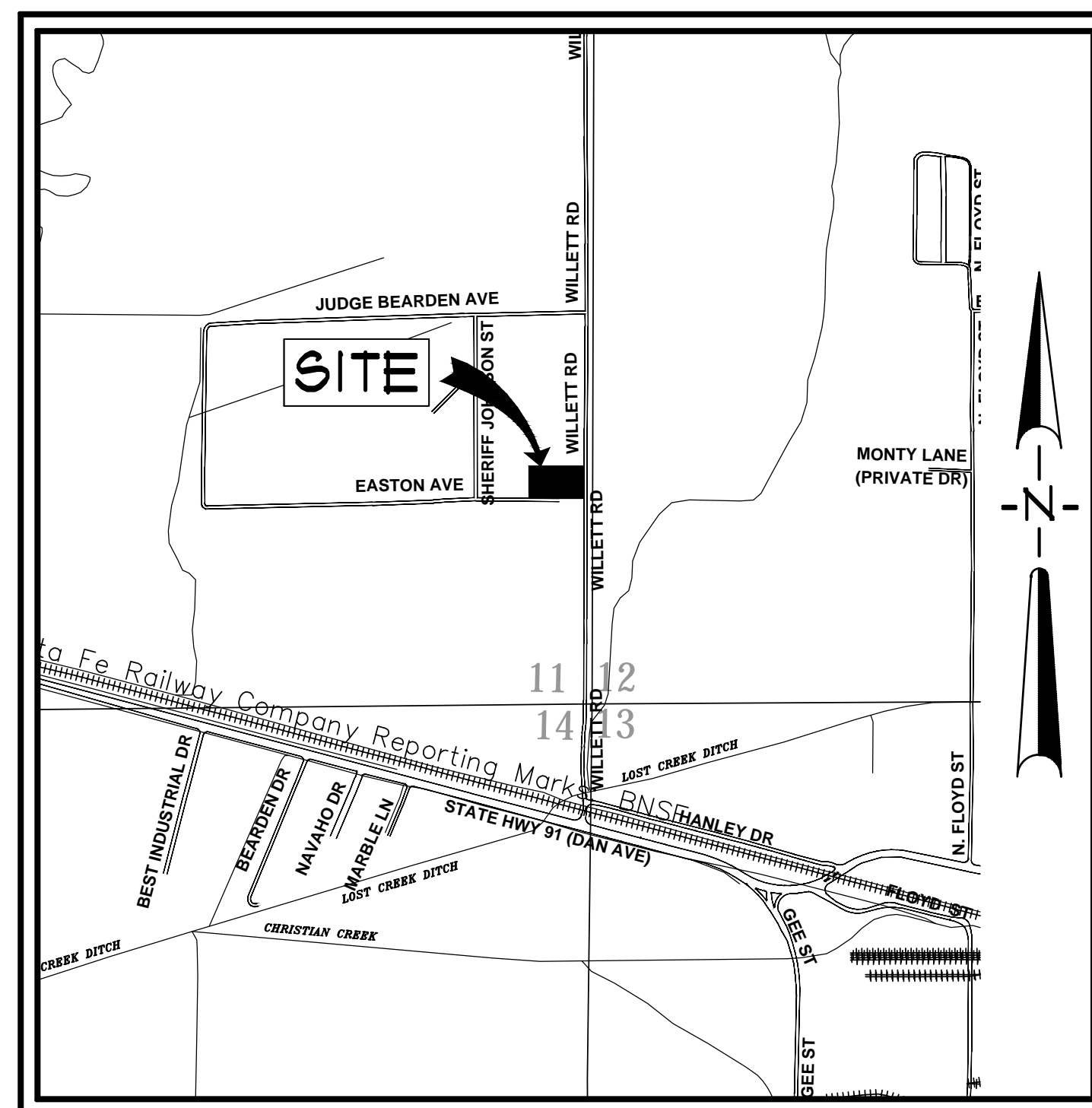
SITE DEVELOPMENT PLANS

# CRISIS STABILIZATION UNIT CRAIGHEAD COUNTY

IN THE SOUTHEAST QUARTER OF SECTION 11, TOWNSHIP 14 NORTH, RANGE 3 EAST

PREPARED FOR  
MARVIN DAY, CRAIGHEAD COUNTY JUDGE

JONESBORO, ARKANSAS  
MARCH, 2019



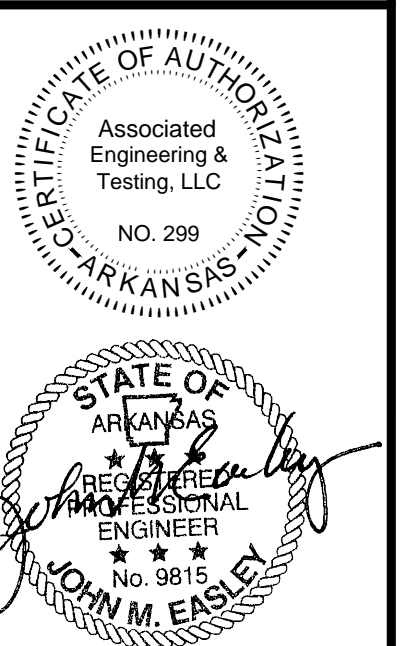
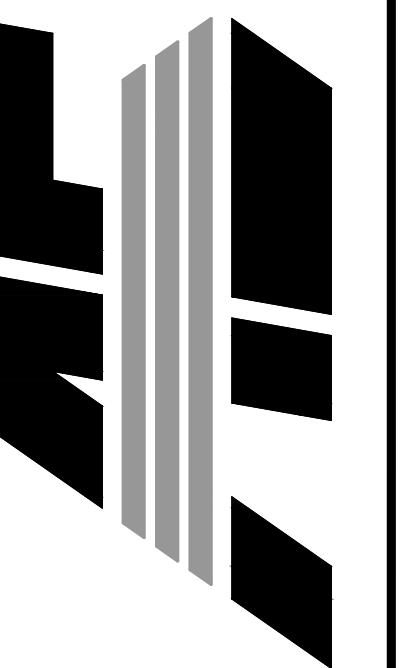
**VICINITY MAP**  
SCALE: 1" = 1,000'

INDEX TO SHEETS

- C1 INDEX SHEET
- C2 GENERAL NOTES
- C3 SITE PLAN
- C4 UTILITY PLAN
- C5 GRADING PLAN
- C6 EROSION CONTROL PLAN
- C7 LANDSCAPE PLAN
- C8 STANDARD DETAILS

CRISIS STABILIZATION UNIT  
 CRAIGHEAD COUNTY  
 901 WILLETT ROAD  
 JONESBORO, ARKANSAS

**ASSOCIATED ENGINEERING, LLC**  
 CIVIL ENGINEERING • LAND SURVEYING  
 LAND PLANNING  
 103 SOUTH CHURCH STREET • P.O. BOX 1482  
 JONESBORO, AR 72403  
 PH: 870-932-3594 • FAX: 870-932-1283



NO.	DESCRIPTION	DATE
1	REVISE PARKING	02/28/19
2	REVISE DUMP, PAD/WATER	03/19/19

**COVER SHEET**

DATE: 03/11/19	DRAWN: STH
CADD FILE: 19106-SDP-R1	CHECKED: JME
DWG# 0314112.0002	SHEET
SCALE: 1" = 30'	C1

**RESOURCE LIST**

- CITY OF JONESBORO - PLANNING AND ZONING**  
DERREL SMITH, CITY PLANNER  
300 SOUTH CHURCH STREET  
JONESBORO, AR 72401  
879-932-0406
- CITY OF JONESBORO - ENGINEERING**  
CRAIG LIGHT, P.E.  
CITY ENGINEER  
307 VINE STREET  
JONESBORO, AR 72401  
870-932-2438
- CODES DEPT. FIRE MARSHAL**  
JASON WILLS  
3215 E. JOHNSON AVE  
JONESBORO, AR 72401  
870-932-2428
- CITY WATER AND LIGHT - ENGINEERING**  
JAKE RICE, P.E., P.S. - MANAGER  
400 EAST MONROE, P.O. BOX 1289  
JONESBORO, AR 72403  
870-935-5581, FAX: 870-930-3303  
SUSAN MERIDETH - ACTING ENGINEERING SERVICES DIRECTOR  
870-930-3320
- CENTERPOINT ENERGY**  
KEITH CRAIG - SERVICE TECHNICIAN  
3013 OLD FIEDERHOUSE ROAD  
JONESBORO, AR 72404  
CELL: 870-897-3750
- AT&T**  
723 CHURCH, ROOM B 27  
JONESBORO, AR 72403  
PHIL FARLEY - AREA MANAGER INSTALLATION & REPAIR  
870-972-7827, FAX: 870-972-7610  
TOMMY GRAY - AREA MANAGER ENGINEERING DESIGN  
870-972-7587, FAX: 870-972-7533
- SUDDEN LINK - CABLE TV**  
1520 SOUTH CARAWAY ROAD  
JONESBORO, AR 72401  
BOB PROCK - CONSTRUCTION MANAGER  
870-933-8429 EXT: 212, FAX: 870-972-8141  
DEANNA HORNBACK - MANAGER  
JIMMY YANCY - FIELD MANAGER  
CELL: 870-219-8583

**GENERAL NOTES**

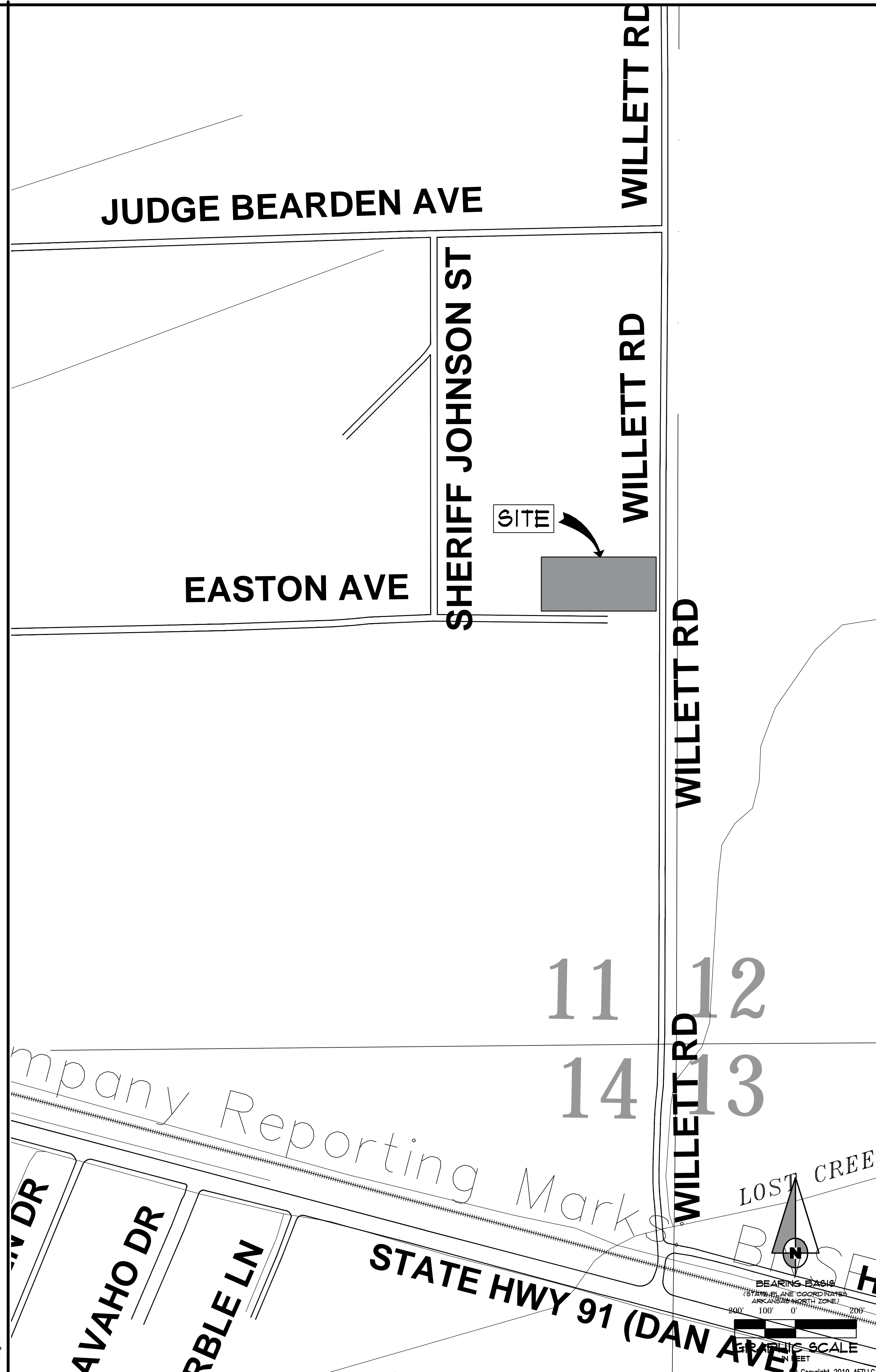
- SUBJECT PROPERTY IS LOCATED WITHIN ZONE "X". AREAS DETERMINED TO BE OUTSIDE 500-YEAR FLOODPLAIN AND ZONE "A", SPECIAL FLOOD HAZARD AREAS UNINUNDATED BY 100-YEAR FLOOD WITH NO BASE FLOOD ELEVATIONS DETERMINED, AS DESIGNATED BY FEDERAL EMERGENCY MANAGEMENT AGENCY FLOOD INSURANCE RATE MAP FOR JONESBORO, COMMUNITY PANELS 05051/0045C (PANEL 43 OF 200). EFFECTIVE DATE - SEPTEMBER 27, 1991. REVISED - DECEMBER 14, 2018.
- SCREENING AND BUFFERING ARE AS SHOWN.
- EASEMENTS ARE AS SHOWN.
- NO KNOWN HISTORICAL STRUCTURES ARE LOCATED ON SUBJECT PROPERTY.
- DIMENSIONS SHOWN ARE TO THE FACE OF CURB UNLESS OTHERWISE NOTED.

**BENCHMARK LIST**

- ELEVATIONS SHOWN HEREON ARE IN FEET AND DECIMAL PARTS THEREOF AND REFER TO MSL DATUM.
- BENCHMARK #1 IS NORTH RIM OF MANHOLE (ELEV. = 344.64 NAVD 88) APPROXIMATELY 5 FEET NORTH AND 49 FEET WEST OF NORTHEAST CORNER OF SUBJECT PROPERTY.

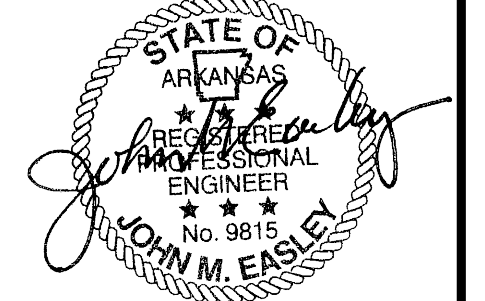
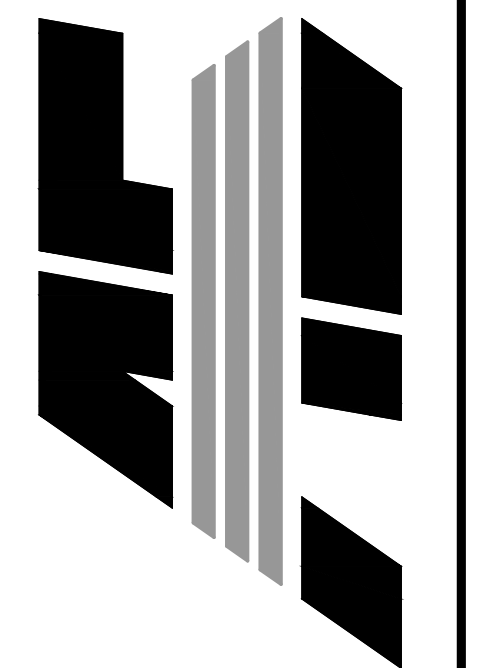
**LEGEND**

<ul style="list-style-type: none"> <li>BOUNDARY LINE</li> <li>LOT LINES</li> <li>FOUND IRON PIPE</li> <li>FOUND COTTON-PICKER SPINDLE</li> <li>FOUND REBAR</li> <li>FOUND IRON PIPE W/ FL6 XXX CAP</li> <li>CITY OF JONESBORO G.P.S. MONUMENT</li> <li>BENCH MARK</li> <li>R/W MONUMENT</li> <li>SET 1 1/4" IRON PIPE W/ FL6 #549 CAP</li> <li>EXISTING SANITARY SEWER LINE</li> <li>PROPOSED SANITARY SEWER LINE</li> <li>EXISTING SANITARY SEWER MANHOLE</li> <li>PROPOSED SANITARY SEWER MANHOLE</li> <li>EXISTING SANITARY SEWER CLEANOUT</li> <li>PROPOSED SANITARY SEWER CLEANOUT</li> <li>PROPOSED SANITARY SEWER SERVICE LINE</li> <li>EXISTING WATER LINE</li> <li>PROPOSED WATER LINE</li> <li>EXISTING WATER METER</li> <li>PROPOSED WATER METER</li> <li>WATER VALVE</li> </ul>	<ul style="list-style-type: none"> <li>FIRE HYDRANT</li> <li>VALVE BOX</li> <li>FIRE PROTECTION</li> <li>EXISTING OVERHEAD ELECTRICAL LINE</li> <li>EXISTING UNDERGROUND ELECTRICAL LINE</li> <li>ELECTRIC TRANSFORMER/ELECTRIC METER</li> <li>POWER POLE</li> <li>POWER JUNCTION, COMM. BOX</li> <li>SIGN LIGHTS/FLOOR LIGHTS</li> <li>LIGHT POLE (SINGLE)</li> <li>LIGHT POLE (BACK-BACK)</li> <li>LIGHT POLE (3 @ 90°)</li> <li>EXISTING SANITARY SEWER MANHOLE</li> <li>PROPOSED SANITARY SEWER MANHOLE</li> <li>EXISTING SANITARY SEWER CLEANOUT</li> <li>PROPOSED SANITARY SEWER CLEANOUT</li> <li>EXISTING OVERHEAD COMMUNICATION LINE</li> <li>EXISTING UNDERGROUND COMMUNICATION LINE</li> <li>TELEPHONE PEDESTAL</li> <li>EXISTING GAS LINE</li> <li>GAS METER</li> <li>EXISTING STORM WATER MANHOLE</li> </ul>	<ul style="list-style-type: none"> <li>GRADED INLET</li> <li>DOWNSPOUT</li> <li>SPRINKLER CONTROL</li> <li>MAILBOX</li> <li>TRASH COMPACTOR</li> <li>COLUMN</li> <li>BOLLARD</li> <li>HANDICAP SIGN</li> <li>EXISTING FENCE LINE</li> <li>EXISTING GROUND CONTOUR</li> <li>FINISHED GROUND CONTOUR</li> <li>EXISTING TREE/SHRUB</li> <li>BASIN BOUNDARY</li> <li>DRAINAGE FLOW</li> <li>GENERAL DRAINAGE FLOW</li> <li>SWALE FLOW DIRECTION</li> <li>SILT FENCE</li> <li>ROCK CHECK DAM</li> <li>RIP RAP AREA</li> <li>INLET PROTECTION</li> <li>ROCK CHECK DAM</li> </ul>
---	---	--



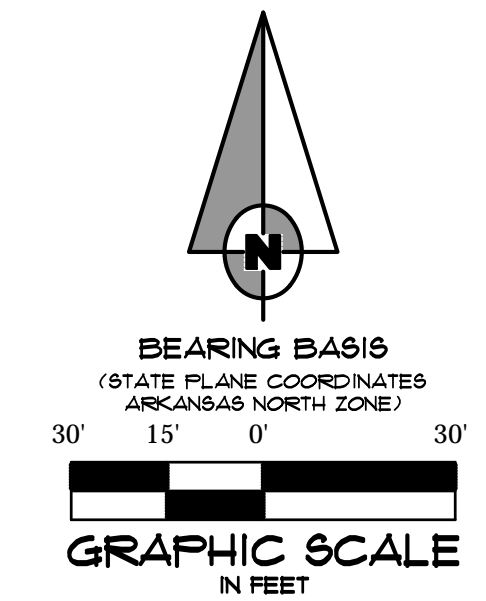
CRISIS STABILIZATION UNIT  
CRAIGHEAD COUNTY  
901 WILLETT ROAD  
JONESBORO, ARKANSAS

ASSOCIATED ENGINEERING, LLC  
CIVIL ENGINEERING • LAND SURVEYING  
LAND PLANNING  
103 SOUTH CHURCH STREET • P.O. BOX 1482  
JONESBORO, AR 72403  
PH: 870-932-3594 • FAX: 870-935-1283



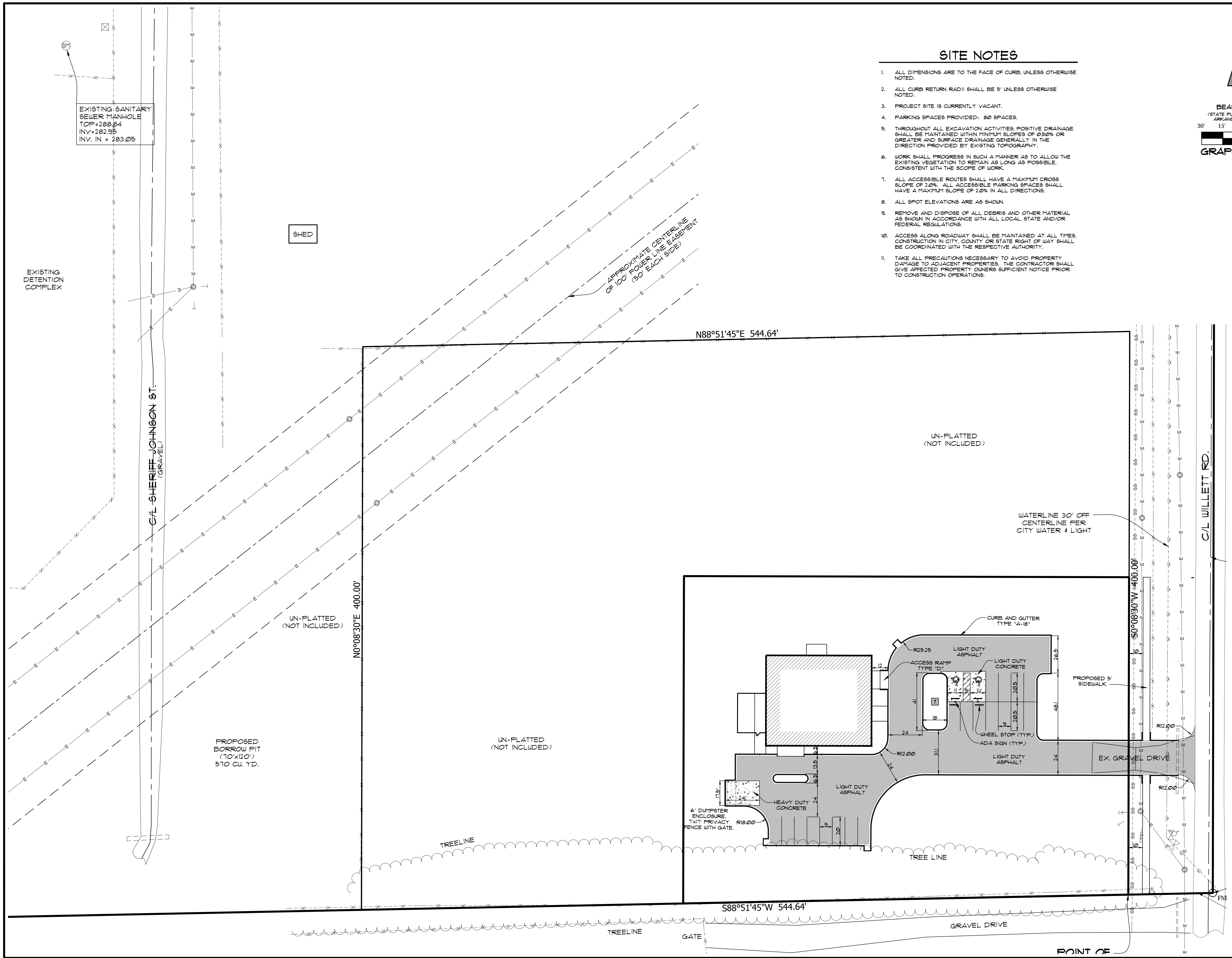
NO.	DESCRIPTION	DATE
1	REVISE PARKING	02/28/19
2	REVISE DUMP PAD/WATER	03/09/19

INDEX SHEET	
DATE: 03/11/19	DRAWN: STH
CADD FILE: 19106-SDP-R1	CHECKED: JME
DWG# 0314112.0002	SHEET
SCALE: 1" = 30'	C2



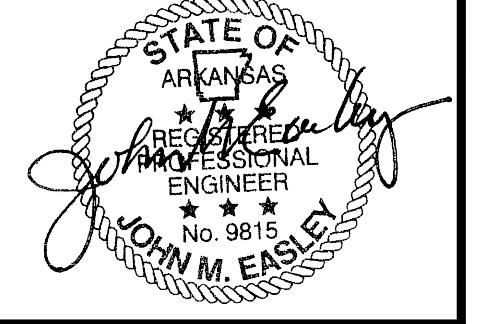
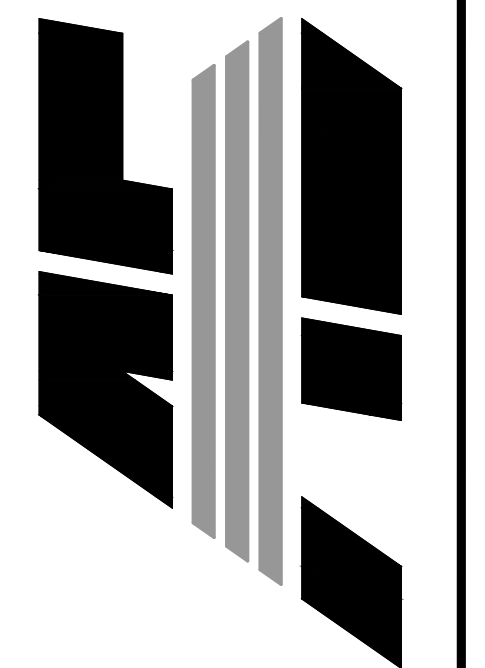
**SITE NOTES**

1. ALL DIMENSIONS ARE TO THE FACE OF CURB, UNLESS OTHERWISE NOTED.
2. ALL CURB RETURN RADII SHALL BE 5' UNLESS OTHERWISE NOTED.
3. PROJECT SITE IS CURRENTLY VACANT.
4. PARKING SPACES PROVIDED: 80 SPACES.
5. THROUGHOUT ALL EXCAVATION ACTIVITIES, POSITIVE DRAINAGE SHALL BE MAINTAINED WITHIN MINIMUM SLOPES OF 0.50% OR GREATER AND SURFACE DRAINAGE GENERALLY IN THE DIRECTION PROVIDED BY EXISTING TOPOGRAPHY.
6. WORK SHALL PROGRESS IN SUCH A MANNER AS TO ALLOW THE EXISTING VEGETATION TO REMAIN AS LONG AS POSSIBLE, CONSISTENT WITH THE SCOPE OF WORK.
7. ALL ACCESSIBLE ROUTES SHALL HAVE A MAXIMUM CROSS SLOPE OF 2.0%. ALL ACCESSIBLE PARKING SPACES SHALL HAVE A MAXIMUM SLOPE OF 2.0% IN ALL DIRECTIONS.
8. ALL SPOT ELEVATIONS ARE AS SHOWN.
9. REMOVE AND DISPOSE OF ALL DEBRIS AND OTHER MATERIAL AS SHOWN IN ACCORDANCE WITH ALL LOCAL, STATE AND/OR FEDERAL REGULATIONS.
10. ACCESS ALONG ROADWAY SHALL BE MAINTAINED AT ALL TIMES. CONSTRUCTION IN CITY, COUNTY OR STATE RIGHT OF WAY SHALL BE COORDINATED WITH THE RESPECTIVE AUTHORITY.
11. TAKE ALL PRECAUTIONS NECESSARY TO AVOID PROPERTY DAMAGE TO ADJACENT PROPERTIES. THE CONTRACTOR SHALL GIVE AFFECTED PROPERTY OWNERS SUFFICIENT NOTICE PRIOR TO CONSTRUCTION OPERATIONS.



**CRISIS STABILIZATION UNIT**  
**CRAIGHEAD COUNTY**  
**901 WILLETT ROAD**  
**JONESBORO, ARKANSAS**

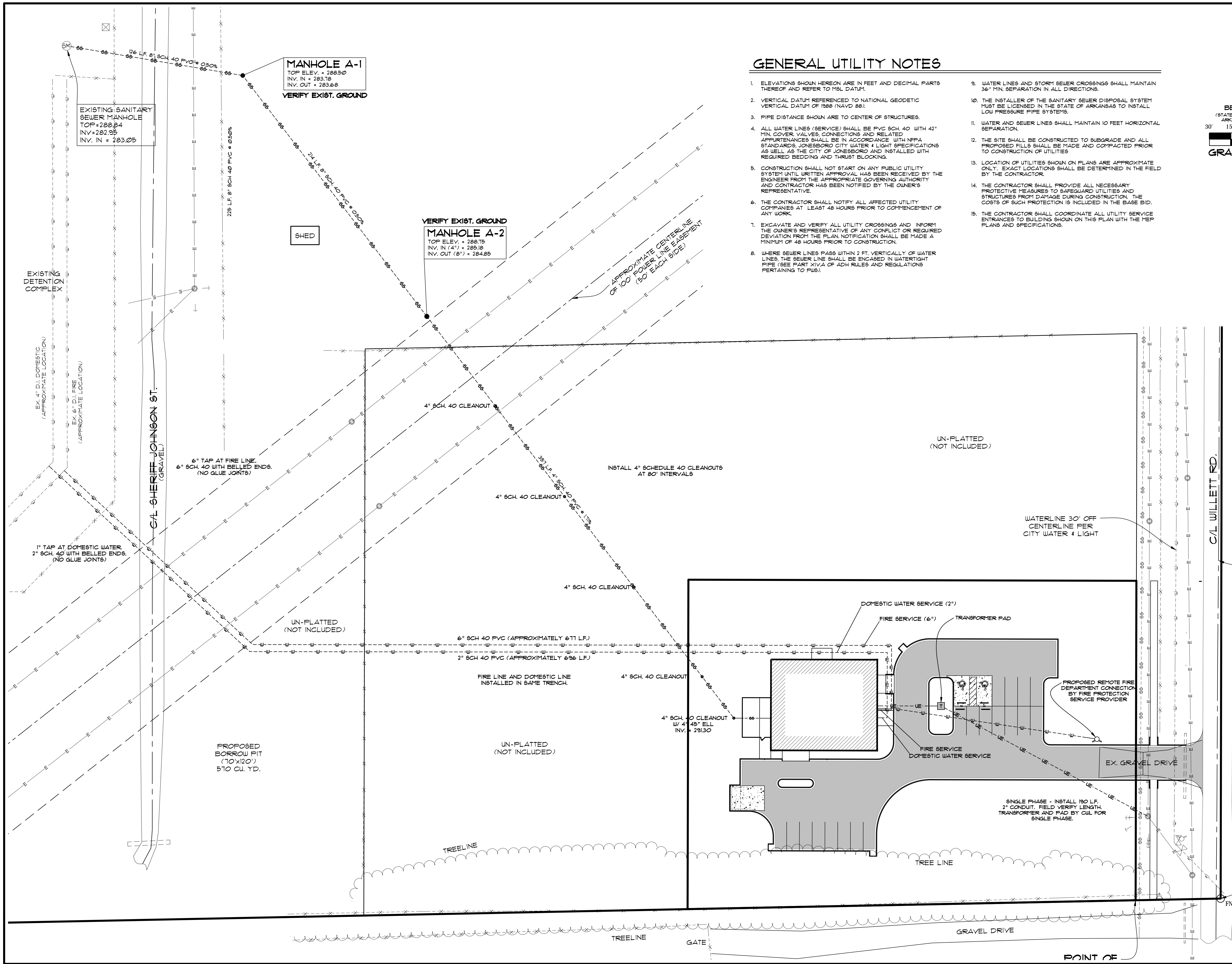
**ASSOCIATED ENGINEERING, LLC**  
 CIVIL ENGINEERING • LAND SURVEYING  
 LAND PLANNING  
 103 SOUTH CHURCH STREET • P.O. BOX 1482  
 JONESBORO, AR 72403  
 PH: 870-932-3594 • FAX: 870-935-1283



NO.	DESCRIPTION	DATE
1	REVISE PARKING	02/28/19
2	REVISE DUMP, PAD/WATER	03/09/19

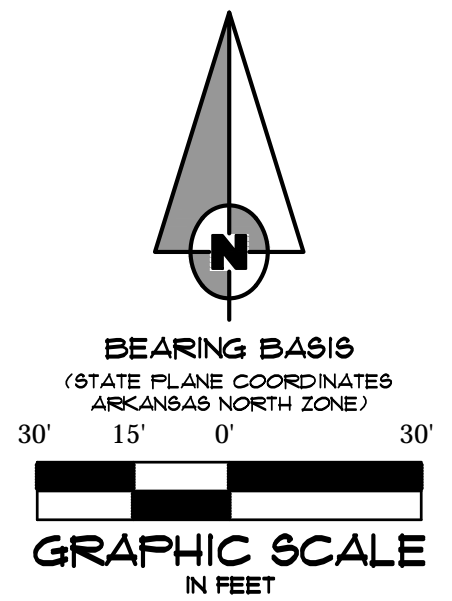
<b>SITE PLAN</b>	
DATE: 03/11/19	DRAWN: STH
CADD FILE: 19106-SDP-R1	CHECKED: JME
DWG# 0314112.0002	SHEET
SCALE: 1" = 30'	C3





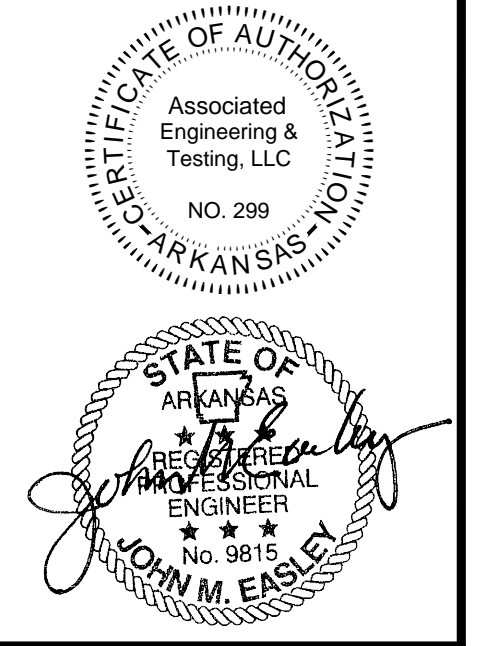
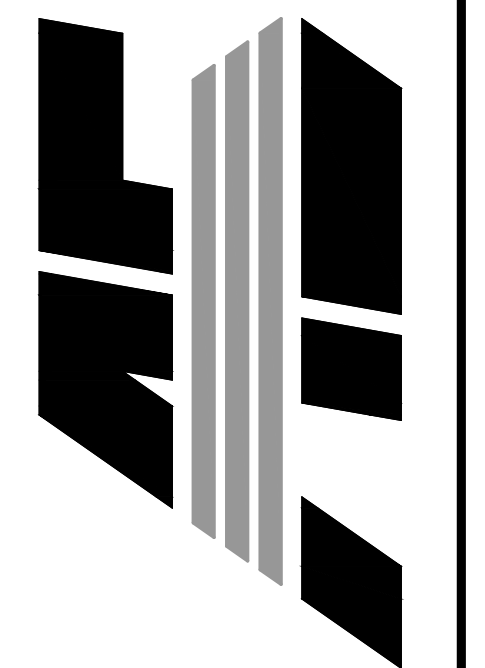
### GENERAL UTILITY NOTES

- ELEVATIONS SHOWN HEREON ARE IN FEET AND DECIMAL PARTS THEREOF AND REFER TO MSL DATUM.
- VERTICAL DATUM REFERENCED TO NATIONAL GEODETIC VERTICAL DATUM OF 1988 (NAVD 88).
- PIPE DISTANCE SHOWN ARE TO CENTER OF STRUCTURES.
- ALL WATER LINES (SERVICE) SHALL BE PVC SCH. 40 WITH 42" MIN. COVER VALVES, CONNECTIONS AND RELATED APPURTENANCES SHALL BE IN ACCORDANCE WITH NFPA STANDARDS, JONESBORO CITY WATER & LIGHT SPECIFICATIONS AS WELL AS THE CITY OF JONESBORO AND INSTALLED WITH REQUIRED BEDDING AND THRUST BLOCKING.
- CONSTRUCTION SHALL NOT START ON ANY PUBLIC UTILITY SYSTEM UNTIL WRITTEN APPROVAL HAS BEEN RECEIVED BY THE ENGINEER FROM THE APPROPRIATE GOVERNING AUTHORITY AND CONTRACTOR HAS BEEN NOTIFIED BY THE OWNER'S REPRESENTATIVE.
- THE CONTRACTOR SHALL NOTIFY ALL AFFECTED UTILITY COMPANIES AT LEAST 48 HOURS PRIOR TO COMMENCEMENT OF ANY WORK.
- EXCAVATE AND VERIFY ALL UTILITY CROSSINGS AND INFORM THE OWNER'S REPRESENTATIVE OF ANY CONFLICT OR REQUIRED DEVIATION FROM THE PLAN. NOTIFICATION SHALL BE MADE A MINIMUM OF 48 HOURS PRIOR TO CONSTRUCTION.
- WHERE SEWER LINES PASS WITHIN 2 FT. VERTICALLY OF WATER LINES, THE SEWER LINE SHALL BE ENCASED IN WATERTIGHT PIPE (SEE PART XIV.A OF ADH RULES AND REGULATIONS PERTAINING TO PUBS).
- WATER LINES AND STORM SEWER CROSSINGS SHALL MAINTAIN 36" MIN. SEPARATION IN ALL DIRECTIONS.
- THE INSTALLER OF THE SANITARY SEWER DISPOSAL SYSTEM MUST BE LICENSED IN THE STATE OF ARKANSAS TO INSTALL LOW PRESSURE PIPE SYSTEMS.
- WATER AND SEWER LINES SHALL MAINTAIN 10 FEET HORIZONTAL SEPARATION.
- THE SITE SHALL BE CONSTRUCTED TO SUBGRADE AND ALL PROPOSED FILLS SHALL BE MADE AND COMPACTED PRIOR TO CONSTRUCTION OF UTILITIES.
- LOCATION OF UTILITIES SHOWN ON PLANS ARE APPROXIMATE ONLY. EXACT LOCATIONS SHALL BE DETERMINED IN THE FIELD BY THE CONTRACTOR.
- THE CONTRACTOR SHALL PROVIDE ALL NECESSARY PROTECTIVE MEASURES TO SAFEGUARD UTILITIES AND STRUCTURES FROM DAMAGE DURING CONSTRUCTION. THE COSTS OF SUCH PROTECTION IS INCLUDED IN THE BASE BID.
- THE CONTRACTOR SHALL COORDINATE ALL UTILITY SERVICE ENTRANCES TO BUILDING SHOWN ON THIS PLAN WITH THE MEP PLANS AND SPECIFICATIONS.



**CRISIS STABILIZATION UNIT**  
**CRAIGHEAD COUNTY**  
**901 WILLETT ROAD**  
**JONESBORO, ARKANSAS**

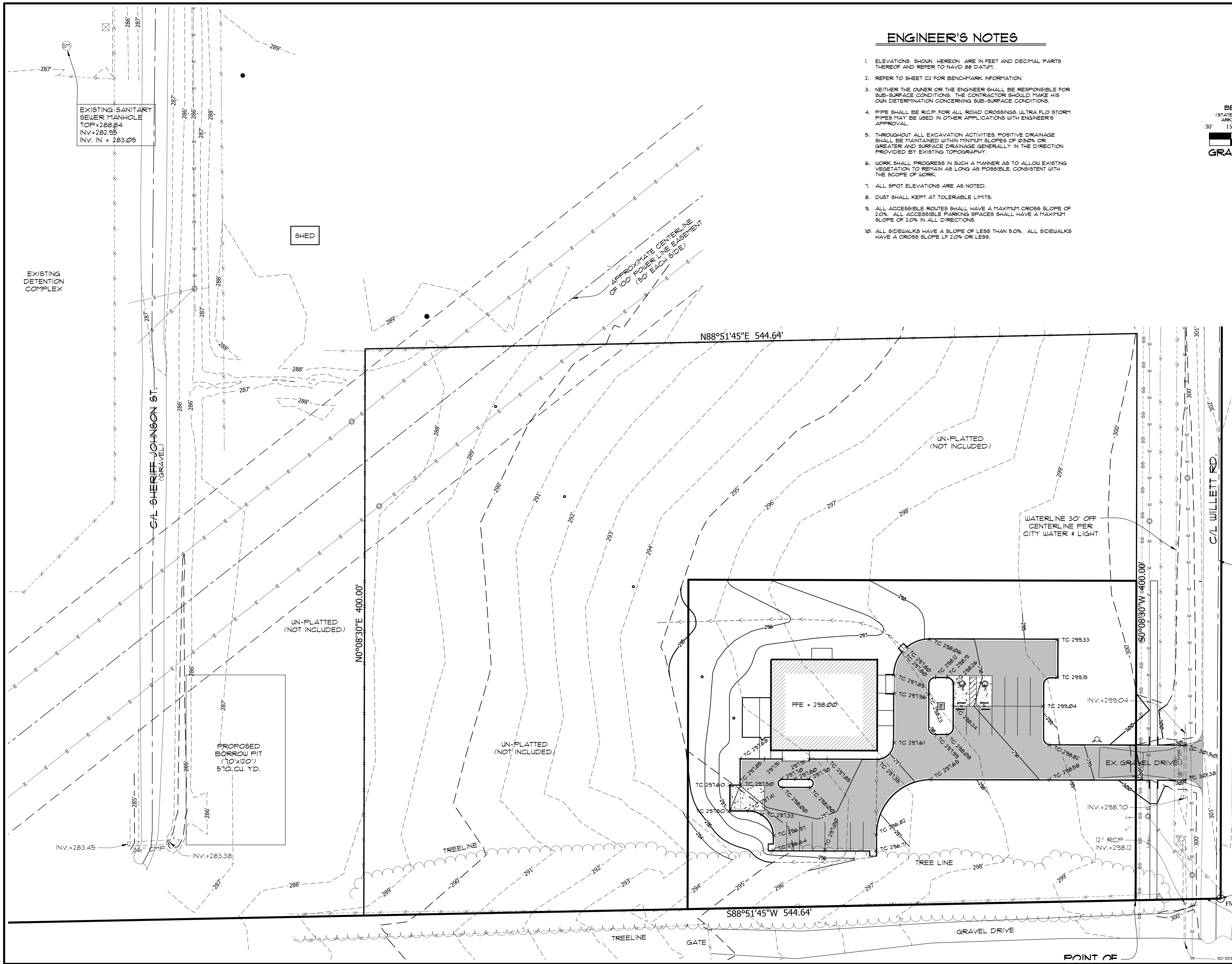
**ASSOCIATED ENGINEERING, LLC**  
 CIVIL ENGINEERING • LAND SURVEYING  
 LAND PLANNING  
 103 SOUTH CHURCH STREET • P.O. BOX 1462  
 JONESBORO, AR 72403  
 PH: 870-932-3594 • FAX: 870-932-1283



NO.	DESCRIPTION	DATE
1	REVISE PARKING	02/28/19
2	REVISE DUMP PAD/WATER	03/09/19

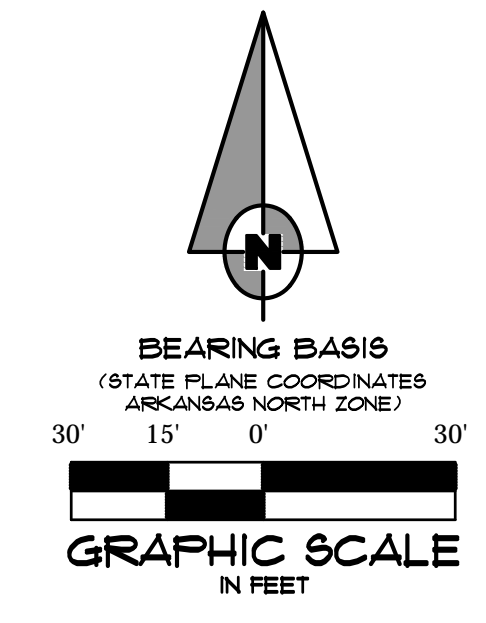
**UTILITY PLAN**

DATE: 03/11/19 DRAIN: STH  
 CADD FILE: 19106-SDP-R1 CHECKED: JME  
 DWG#: 0314112.0002 SHEET  
 SCALE: 1" = 30' C4



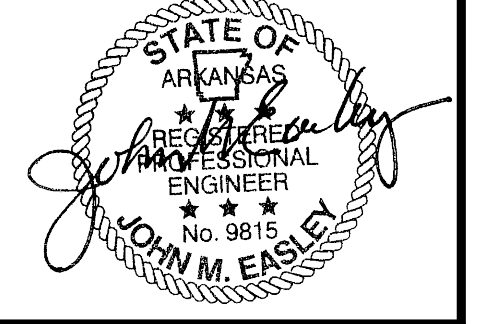
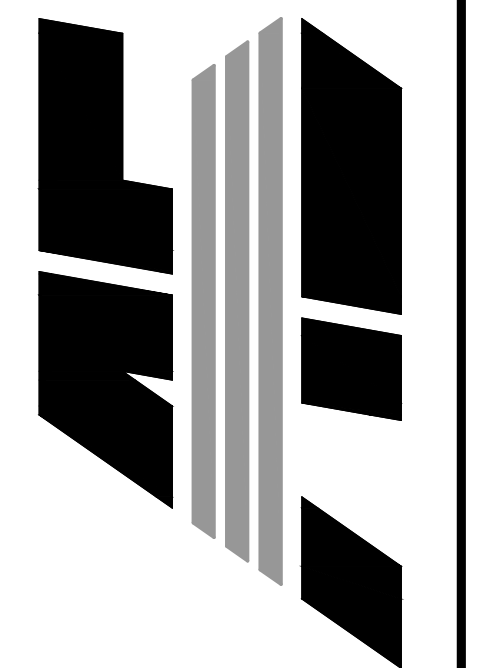
**ENGINEER'S NOTES**

- ELEVATIONS SHOWN HEREON ARE IN FEET AND DECIMAL PARTS THEREOF AND REFER TO NAVD 88 DATUM.
- REFER TO SHEET C2 FOR BENCHMARK INFORMATION.
- NEITHER THE OWNER OR THE ENGINEER SHALL BE RESPONSIBLE FOR SUB-SURFACE CONDITIONS. THE CONTRACTOR SHOULD MAKE HIS OWN DETERMINATION CONCERNING SUB-SURFACE CONDITIONS.
- PIPE SHALL BE RCP FOR ALL ROAD CROSSINGS; ULTRA FLO STORM PIPES MAY BE USED IN OTHER APPLICATIONS WITH ENGINEER'S APPROVAL.
- THROUGHOUT ALL EXCAVATION ACTIVITIES, POSITIVE DRAINAGE SHALL BE MAINTAINED WITHIN MINIMUM SLOPES OF 0.5% OR GREATER AND SURFACE DRAINAGE GENERALLY IN THE DIRECTION PROVIDED BY EXISTING TOPOGRAPHY.
- WORK SHALL PROGRESS IN SUCH A MANNER AS TO ALLOW EXISTING VEGETATION TO REMAIN AS LONG AS POSSIBLE, CONSISTENT WITH THE SCOPE OF WORK.
- ALL SPOT ELEVATIONS ARE AS NOTED.
- DUST SHALL BE KEPT AT TOLERABLE LIMITS.
- ALL ACCESSIBLE ROUTES SHALL HAVE A MAXIMUM CROSS SLOPE OF 2.0%. ALL ACCESSIBLE PARKING SPACES SHALL HAVE A MAXIMUM SLOPE OF 2.0% IN ALL DIRECTIONS.
- ALL SIDEWALKS HAVE A SLOPE OF LESS THAN 5.0%. ALL SIDEWALKS HAVE A CROSS SLOPE OF 2.0% OR LESS.



**CRISIS STABILIZATION UNIT**  
**CRAIGHEAD COUNTY**  
**901 WILLETT ROAD**  
**JONESBORO, ARKANSAS**

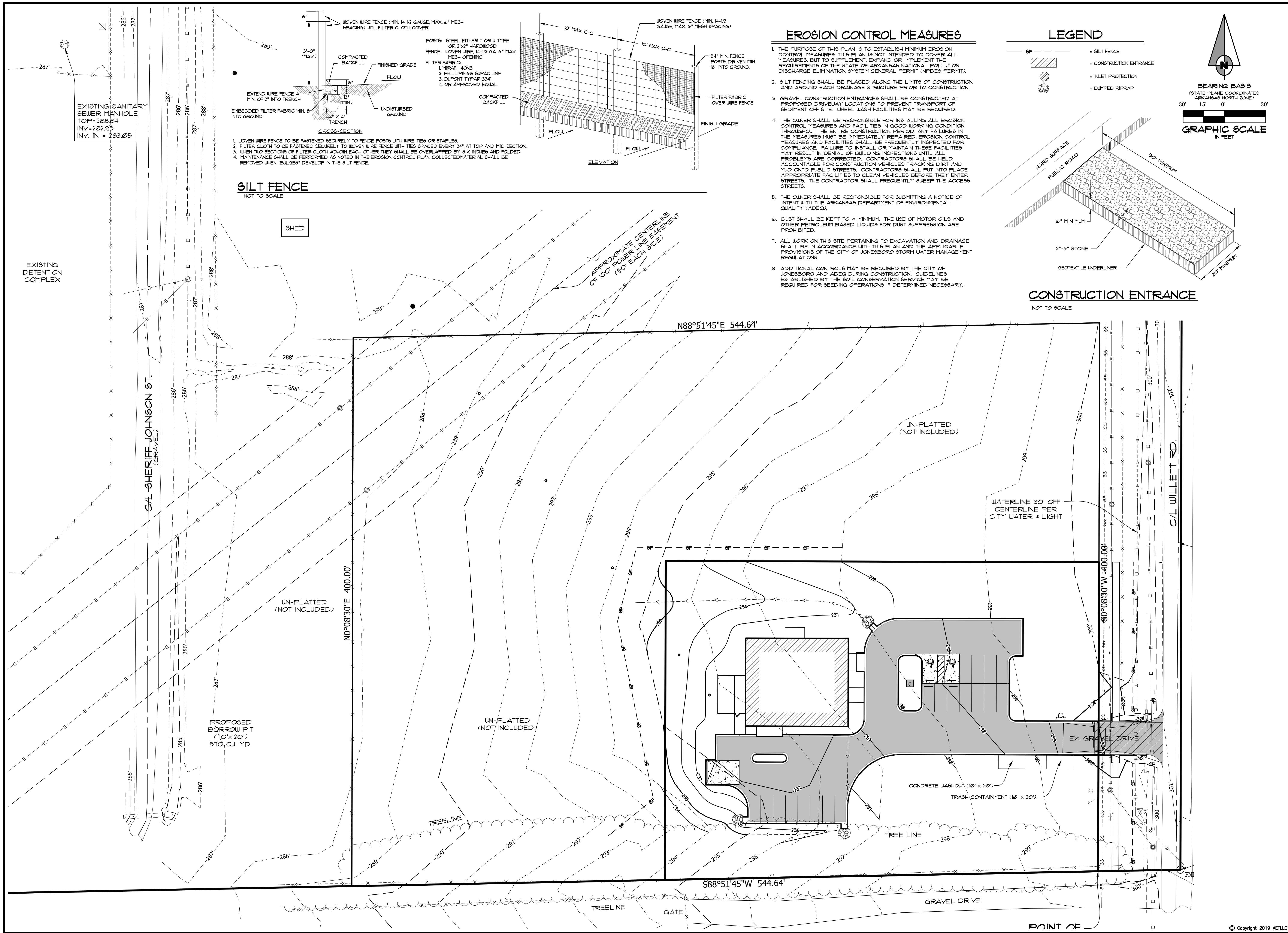
**ASSOCIATED ENGINEERING, LLC**  
 CIVIL ENGINEERING • LAND SURVEYING  
 LAND PLANNING  
 103 SOUTH CHURCH STREET • P.O. BOX 1482  
 JONESBORO, AR 72403  
 PH: 870-932-3594 • FAX: 870-932-1283



NO.	DESCRIPTION	DATE
1	REVISE PARKING	02/28/19
2	REVISE DUMP, PAD/WATER	03/09/19

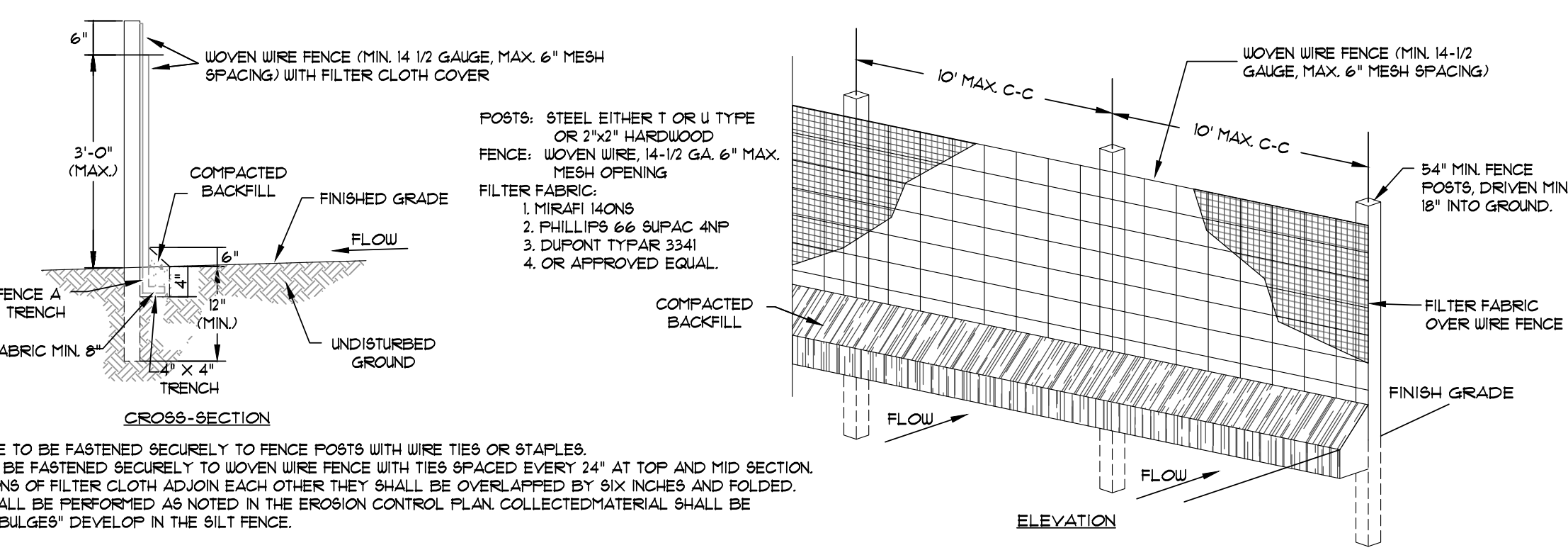
<b>GRADING PLAN</b>	
DATE: 03/11/19	DRAWN: STH
CADD FILE: 19106-SDP-R1	CHECKED: JME
DWG# 0314112.0002	SHEET
SCALE: 1" = 30'	CS





**SILT FENCE**  
NOT TO SCALE

1. WOVEN WIRE FENCE TO BE FASTENED SECURELY TO FENCE POSTS WITH WIRE TIES OR STAPLES.
2. FILTER CLOTH TO BE FASTENED SECURELY TO WOVEN WIRE FENCE WITH TIES SPACED EVERY 24" AT TOP AND MID SECTION.
3. WHEN TWO SECTIONS OF FILTER CLOTH ADJACENT TO EACH OTHER THEY SHALL BE OVERLAPPED BY SIX INCHES AND FOLDED.
4. MAINTENANCE SHALL BE PERFORMED AS NOTED IN THE EROSION CONTROL PLAN. COLLECTED MATERIAL SHALL BE REMOVED WHEN "BULGES" DEVELOP IN THE SILT FENCE.

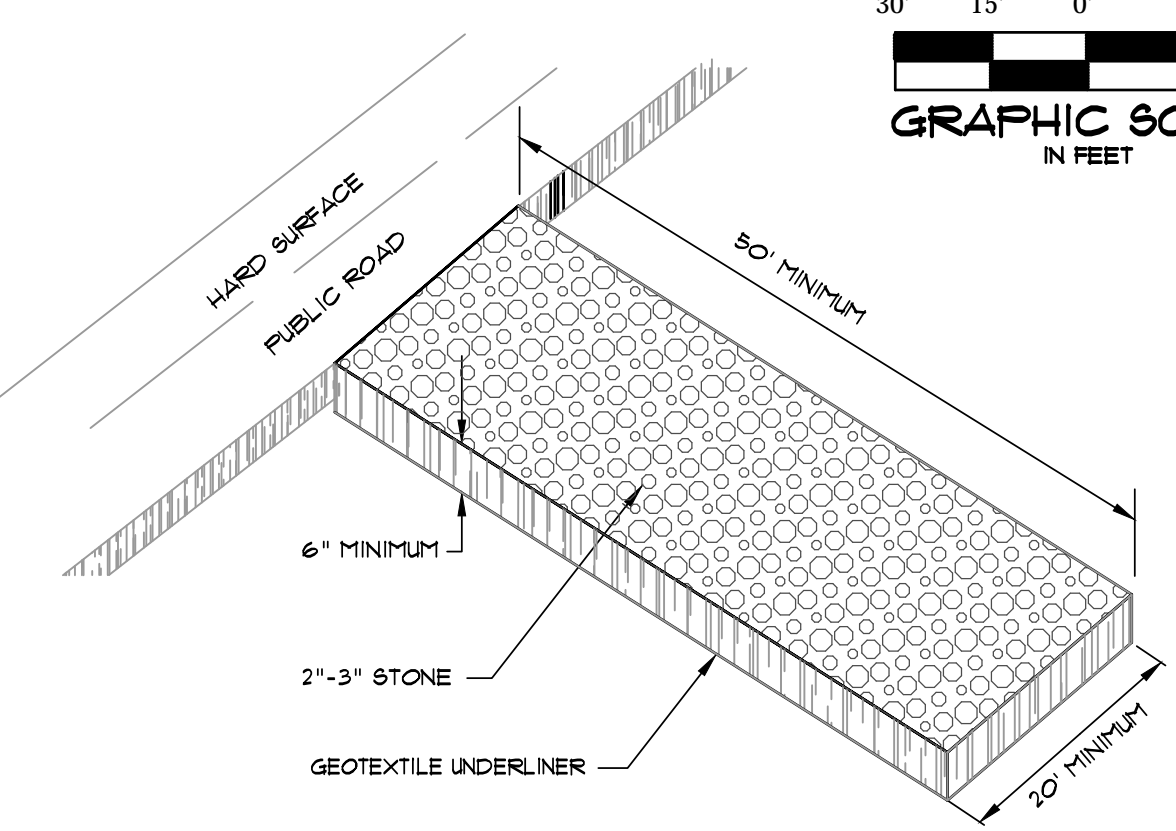
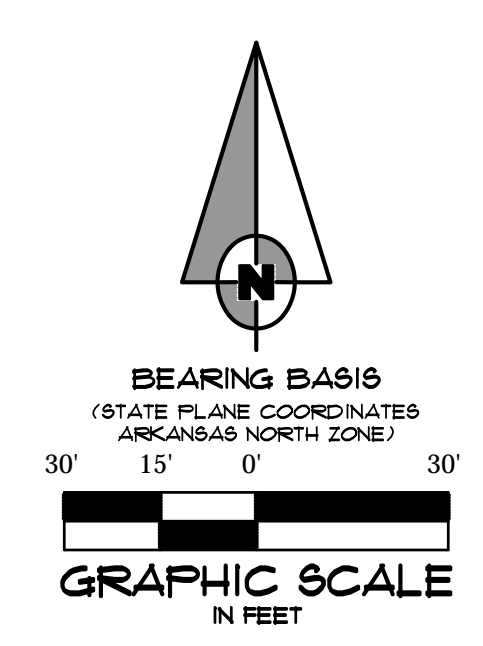


**EROSION CONTROL MEASURES**

1. THE PURPOSE OF THIS PLAN IS TO ESTABLISH MINIMUM EROSION CONTROL MEASURES. THIS PLAN IS NOT INTENDED TO COVER ALL MEASURES, BUT TO SUPPLEMENT, EXPAND OR IMPLEMENT THE REQUIREMENTS OF THE STATE OF ARKANSAS NATIONAL POLLUTION DISCHARGE ELIMINATION SYSTEM GENERAL PERMIT (NPDES PERMIT).
2. SILT FENCING SHALL BE PLACED ALONG THE LIMITS OF CONSTRUCTION AND AROUND EACH DRAINAGE STRUCTURE PRIOR TO CONSTRUCTION.
3. GRAVEL CONSTRUCTION ENTRANCES SHALL BE CONSTRUCTED AT PROPOSED DRIVEWAY LOCATIONS TO PREVENT TRANSPORT OF SEDIMENT OFF SITE. WHEEL WASH FACILITIES MAY BE REQUIRED.
4. THE OWNER SHALL BE RESPONSIBLE FOR INSTALLING ALL EROSION CONTROL MEASURES AND FACILITIES IN GOOD WORKING CONDITION THROUGHOUT THE ENTIRE CONSTRUCTION PERIOD. ANY FAILURES IN THE MEASURES MUST BE IMMEDIATELY REPAIRED. EROSION CONTROL MEASURES AND FACILITIES SHALL BE FREQUENTLY INSPECTED FOR COMPLIANCE. FAILURE TO INSTALL OR MAINTAIN THESE FACILITIES MAY RESULT IN DENIAL OF BUILDING INSPECTIONS UNTIL ALL PROBLEMS ARE CORRECTED. CONTRACTORS SHALL BE HELD ACCOUNTABLE FOR CONSTRUCTION VEHICLES TRACKING DIRT AND MUD ONTO PUBLIC STREETS. CONTRACTORS SHALL PUT INTO PLACE APPROPRIATE FACILITIES TO CLEAN VEHICLES BEFORE THEY ENTER STREETS. THE CONTRACTOR SHALL FREQUENTLY SWEEP THE ACCESS STREETS.
5. THE OWNER SHALL BE RESPONSIBLE FOR SUBMITTING A NOTICE OF INTENT WITH THE ARKANSAS DEPARTMENT OF ENVIRONMENTAL QUALITY (ADEQ).
6. DUST SHALL BE KEPT TO A MINIMUM. THE USE OF MOTOR OILS AND OTHER PETROLEUM BASED LIQUIDS FOR DUST SUPPRESSION ARE PROHIBITED.
7. ALL WORK ON THIS SITE PERTAINING TO EXCAVATION AND DRAINAGE SHALL BE IN ACCORDANCE WITH THIS PLAN AND THE APPLICABLE PROVISIONS OF THE CITY OF JONESBORO STORM WATER MANAGEMENT REGULATIONS.
8. ADDITIONAL CONTROLS MAY BE REQUIRED BY THE CITY OF JONESBORO AND ADEQ DURING CONSTRUCTION. GUIDELINES ESTABLISHED BY THE SOIL CONSERVATION SERVICE MAY BE REQUIRED FOR SEEDING OPERATIONS IF DETERMINED NECESSARY.

**LEGEND**

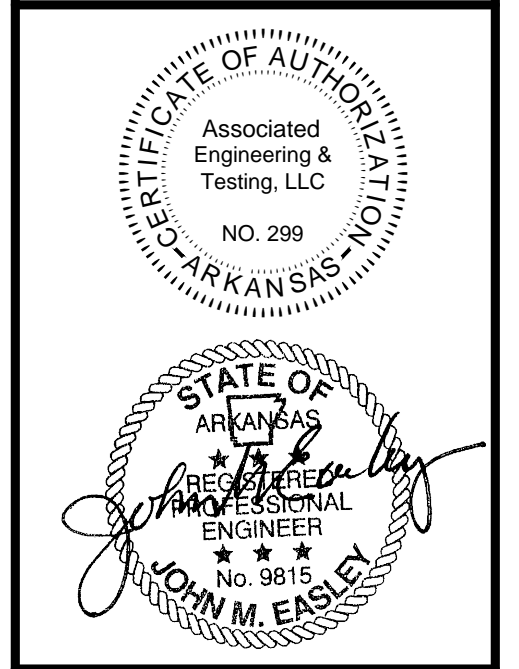
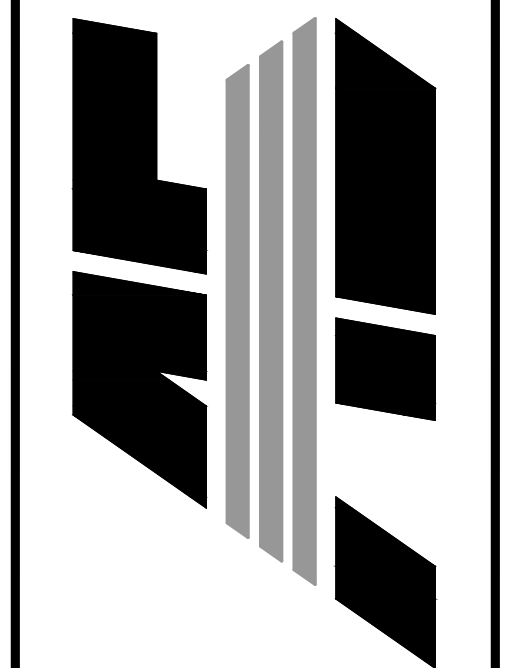
- SILT FENCE
- CONSTRUCTION ENTRANCE
- INLET PROTECTION
- DUMPED RIPRAP



**CONSTRUCTION ENTRANCE**  
NOT TO SCALE

**CRISIS STABILIZATION UNIT**  
CRAIGHEAD COUNTY  
WILLETT ROAD  
JONESBORO, ARKANSAS

**ASSOCIATED ENGINEERING, LLC**  
CIVIL ENGINEERING • LAND SURVEYING  
LAND PLANNING  
103 SOUTH CHURCH STREET • P.O. BOX 1482  
JONESBORO, AR 72403  
PH: 870-932-3594 • FAX: 870-932-1283



NO.	DESCRIPTION	DATE
1	REVISE PARKING	02/28/19
2	REVISE DUMP, PAD/WATER	03/28/19

**EROSION PLAN**

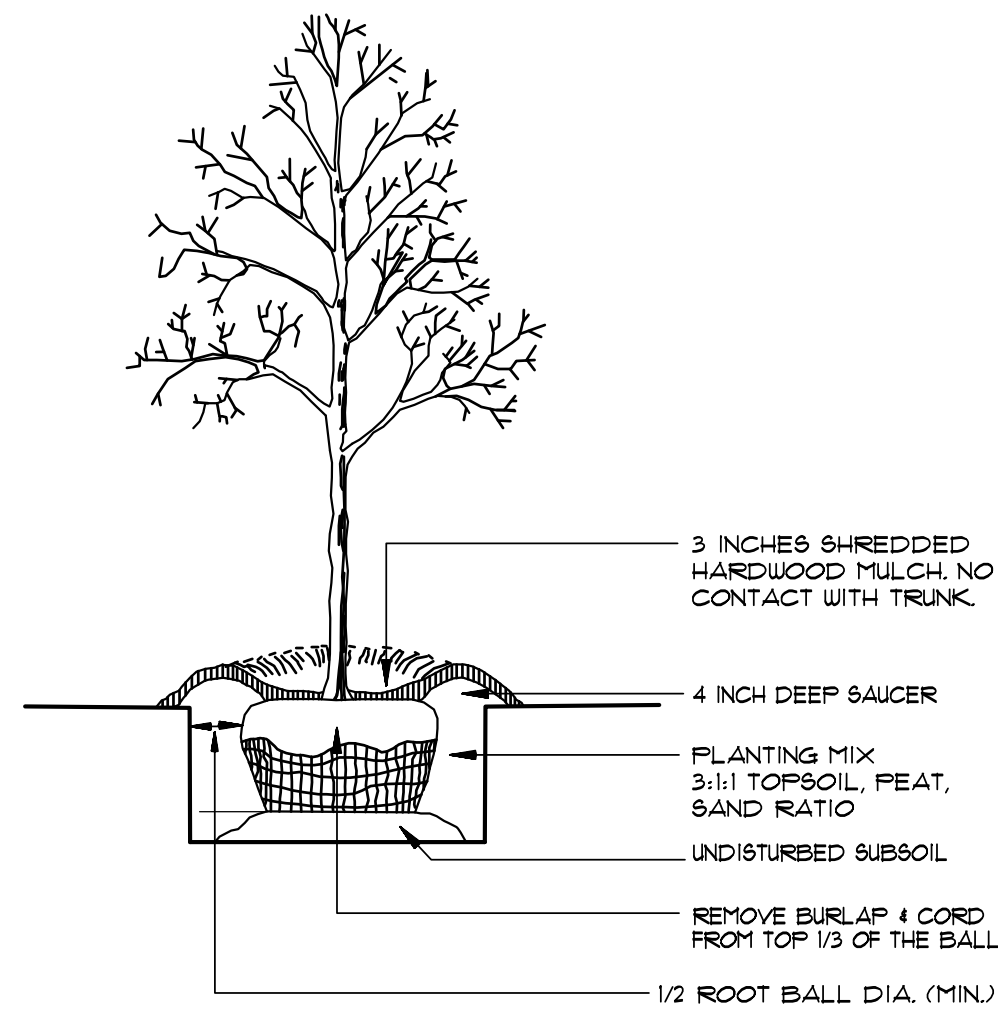
DATE: 03/11/19 DRAIN: STH  
 CADD FILE: 19106-SDP-R1 CHECKED: JME  
 DWG#: 0314112.0002 SHEET  
 SCALE: 1" = 30' C6

EXISTING SANITARY  
SEWER MANHOLE  
TOP = 288.84  
INV. IN = 282.95  
INV. IN = 283.05

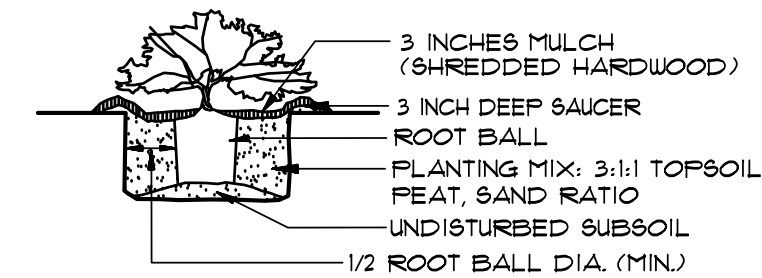
EXISTING  
DETENTION  
COMPLEX

C/L SHERIFF JOHNSON ST.  
(GRAVEL)

SHED



**BALL AND BURLAP PLANTING**  
NOT TO SCALE



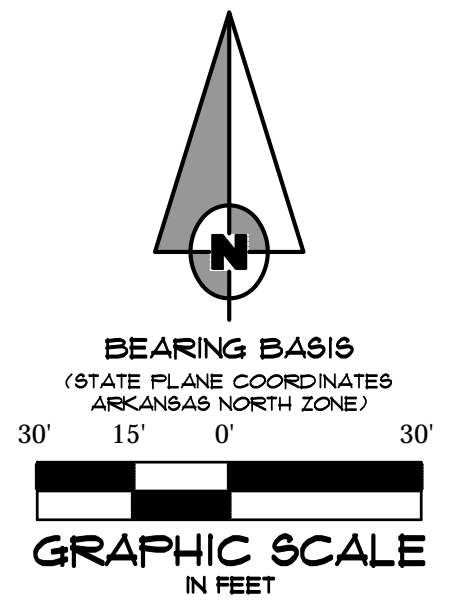
**CONTAINER GROWN PLANTING**  
NOT TO SCALE

**TREE PROTECTION AREA NOTES:**

- THE INTENT OF THE TREE PROTECTION AREA SHOWN ON THIS PLAN IS TO PROTECT TREES FROM DAMAGE THAT MAY QUALIFY FOR CREDITS TOWARD THE REQUIREMENTS WITHIN THE CITY OF JONESBORO ORDINANCE SECTION 117-326. LANDSCAPING AND SCREENING. THE FOLLOWING EXISTING TREE SIZES WERE OBSERVED IN MARCH OF 2019 THAT MAY QUALIFY FOR CREDITS TOWARD THE REQUIRED TREES CONTAINED WITHIN THIS ORDINANCE.
  - (1) 4" TO 5" DBH = 2 CREDITS
  - (8) 6" TO 12" DBH = 24 CREDITS
  - (1) 18" TO 18" DBH = 4 CREDITS
  - (1) 25" TO 32" DBH = 8 CREDITS
  - (1) 33" TO 48" DBH = 10 CREDITS
- ALL TREES WITHIN THE TREE PROTECTION AREA SHALL BE PROTECTED FROM ANY DISTURBANCE WITH A BARRIER PRIOR TO AND DURING ALL PHASES OF DEMOLITION AND CONSTRUCTION ACTIVITY. THE BARRIER SHALL BE INSTALLED OUTSIDE THE DRIP LINE, A MINIMUM OF FOUR FEET HIGH, CONSTRUCTED OF CHAIN LINK OR POLYETHYLENE LAMINAR SAFETY FENCING, OR SIMILAR MATERIAL SUBJECT TO APPROVAL BY THE CITY OF JONESBORO PLANNING AND ZONING DEPARTMENT. "TREE PROTECTION AREA" SHALL BE POSTED VISIBLY ON ALL SIDES OF THE AREA.

**PLANT MATERIAL NOTES:**

- COMPLETE BERMUDA GRASS COVER SHALL BE ESTABLISHED FOR ALL AREAS OF DISTURBANCE THAT ARE NOT SCHEDULED FOR ANOTHER MATERIAL.
- THE TWO RED OAK TREES SHOWN ON THIS PLAN SHALL BE BALLED AND BURLAPPED. A MINIMUM CALIFER OF 2 1/2 INCH, AND A MINIMUM HEIGHT OF 8 FEET. ALL OTHER PLANT MATERIAL SHALL BE 5 GALLON MINIMUM CONTAINER GROWN.
- ALL PLANT MATERIAL SHALL COMPLY WITH THE LATEST AMENDED EDITION OF THE "AMERICAN STANDARDS FOR NURSERY STOCK".



N88°51'45"E 544.64'

UN-FLATTED  
(NOT INCLUDED)

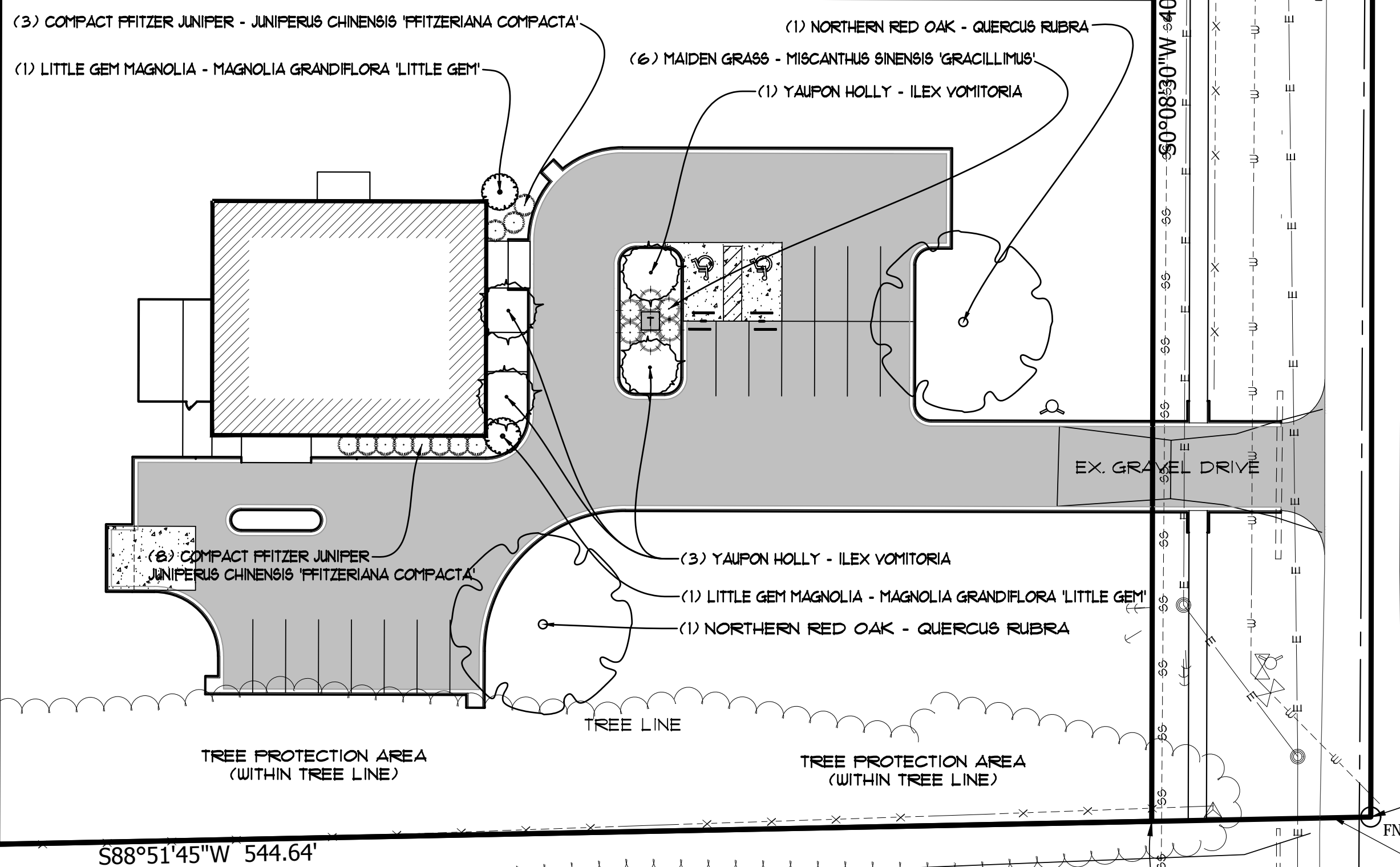
WATERLINE 30' OFF  
CENTERLINE PER  
CITY WATER & LIGHT

UN-FLATTED  
(NOT INCLUDED)

N0°08'30"E 400.00'

PROPOSED  
BORROW PIT  
(10'x120')  
570 CU. YD.

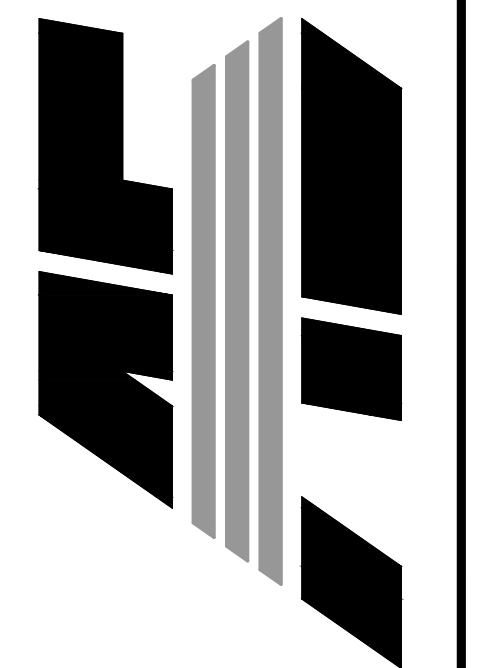
UN-FLATTED  
(NOT INCLUDED)



S88°51'45"W 544.64'

CRISIS STABILIZATION UNIT  
CRAIGHEAD COUNTY  
WILLETT ROAD  
JONESBORO, ARKANSAS

ASSOCIATED  
ENGINEERING, LLC  
CIVIL ENGINEERING • LAND SURVEYING  
LAND PLANNING  
103 SOUTH CHURCH STREET • P.O. BOX 1482  
JONESBORO, AR 72403  
PH: 870-932-3594 • FAX: 870-932-1283



NO.	DESCRIPTION	DATE
1	REVISE PARKING	02/28/19
2	REVISE DUMP, PAD/WATER	03/19/19

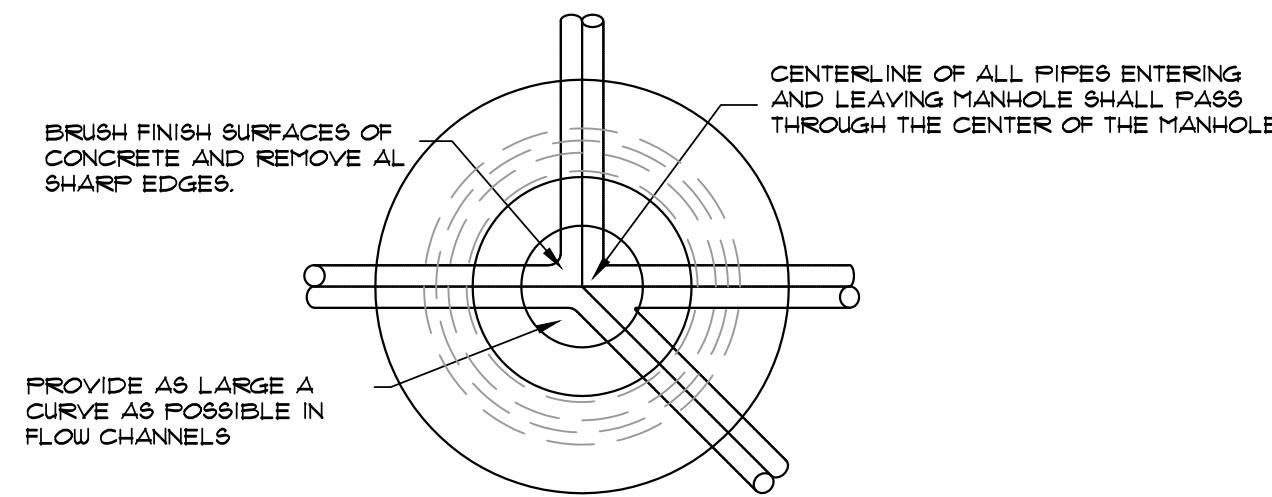
**LANDSCAPE  
PLAN**

DATE: 03/11/19 DRAIN: STH  
CADD FILE: 19106-SDP-R1 CHECKED: JME  
DWG#: 0314112.0002 SHEET  
SCALE: 1" = 30' C7

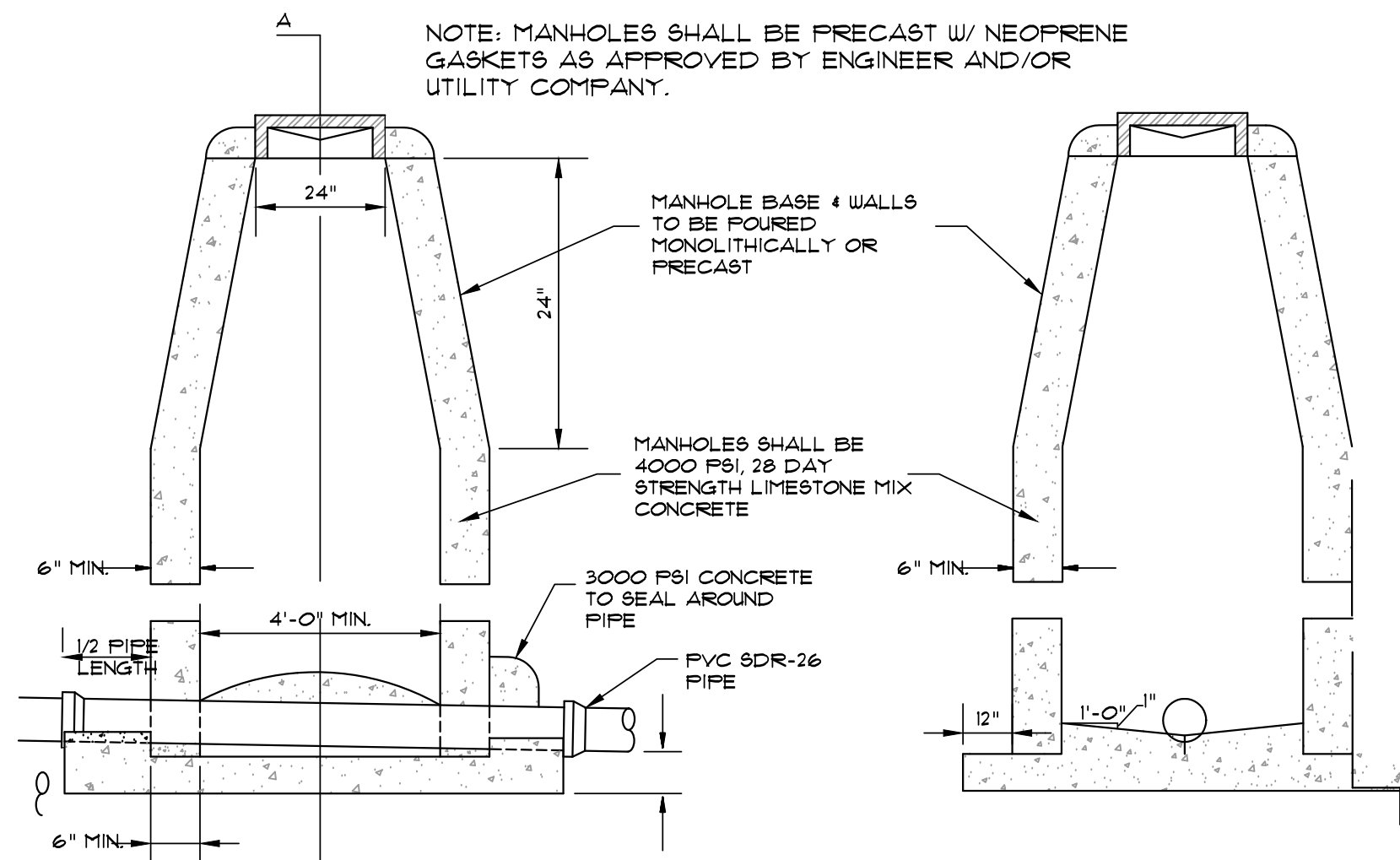


# NOTES TYPICAL TO ALL MANHOLES

- MANHOLE BASES TO BE 4000 PSI, 28 DAY STRENGTH LESTONE MIX CONCRETE ON UNDISTURBED SUB-GRADE OR ON COMPACTED SELECT FILL MATERIAL AS AUTHORIZED.
- MANHOLE SIDEWALL MATERIAL TO BE CONCRETE IN ACCORDANCE WITH PROPOSAL FORM REQUIREMENTS.
  - 4" I.D. FOR SEWER SIZES 6" THRU 24"
  - 5" I.D. FOR SEWER SIZES 24" THRU 30"
  - 6" I.D. FOR SEWER SIZES 36" THRU 42"
- SET MANHOLE TOPS AS FOLLOWS:
  - IN STREETS, ROADS, HIGHWAYS, AND OTHER PAVED AREAS: FLUSH WITH FINISHED PAVING GRADE.
  - UNDEVELOPED AREAS, SUCH AS FIELDS, WOODS, ETC.: 6" ABOVE GROUND.
  - OTHER AREAS: 6" ABOVE GROUND.
- MANHOLE FRAMES SHALL HAVE MIN. OPENING OF 22" DIA.



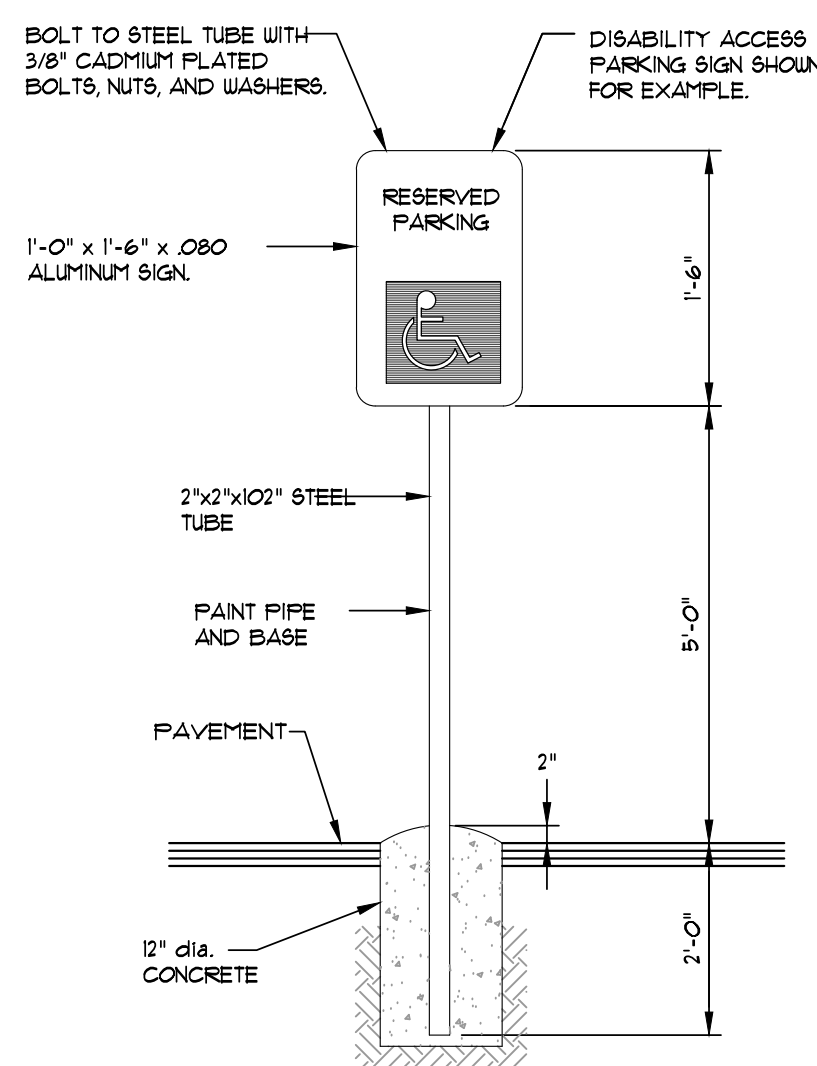
**PLAN**  
NOT TO SCALE



**SIDE ELEVATION**  
NOT TO SCALE

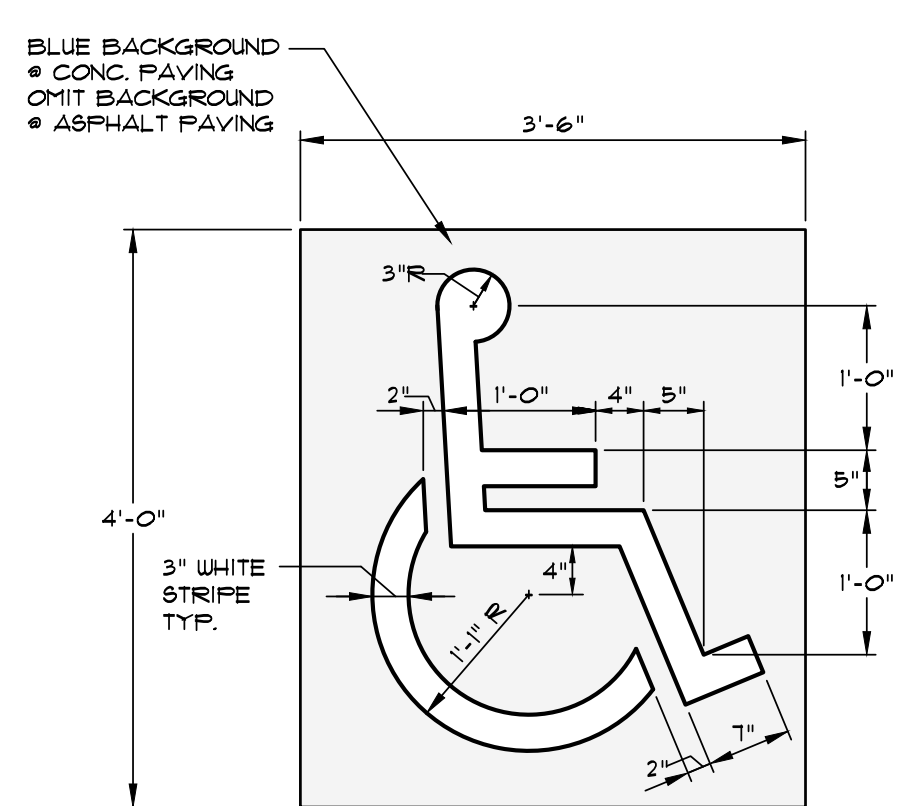
**SECTION A-A**  
NOT TO SCALE

## STANDARD MANHOLE DETAILS

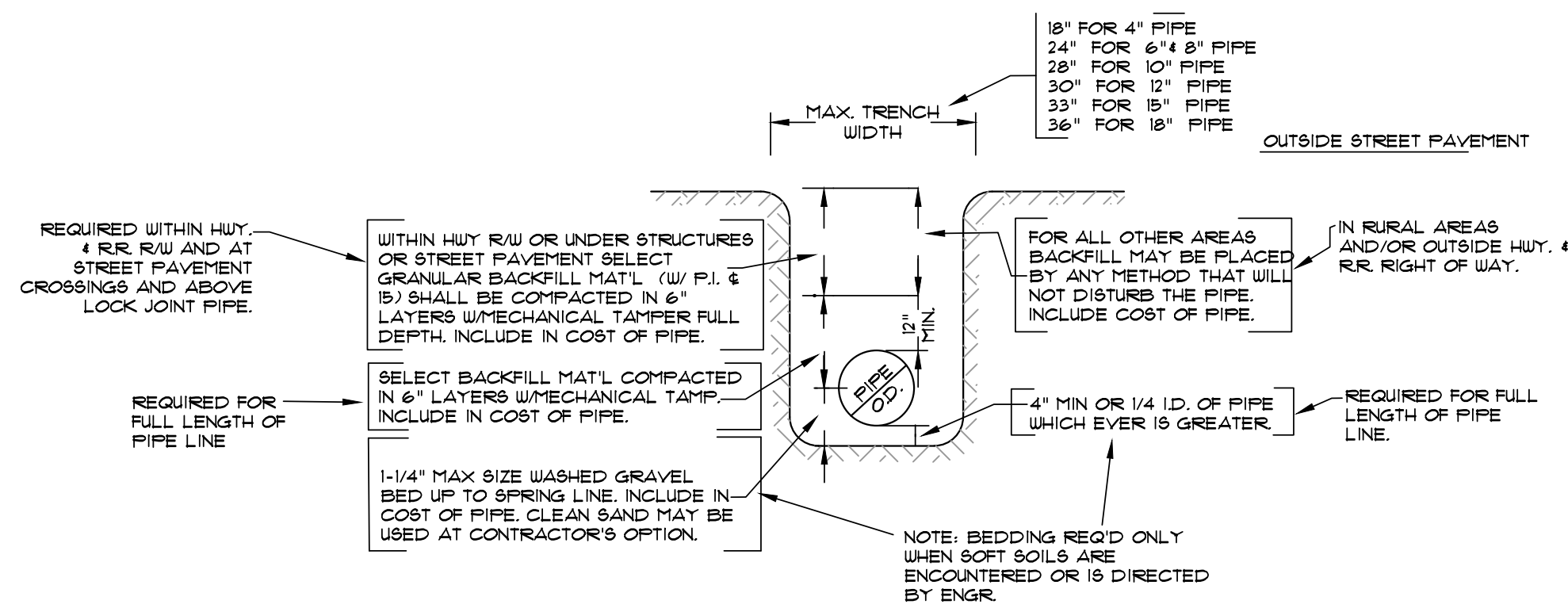


NOTE: ALL SIGNS SHALL CONFORM TO MUTCD AND SHALL BE HIGH INTENSITY.

**ADA SIGN DETAIL**  
SCALE: 1/2" = 1'-0"

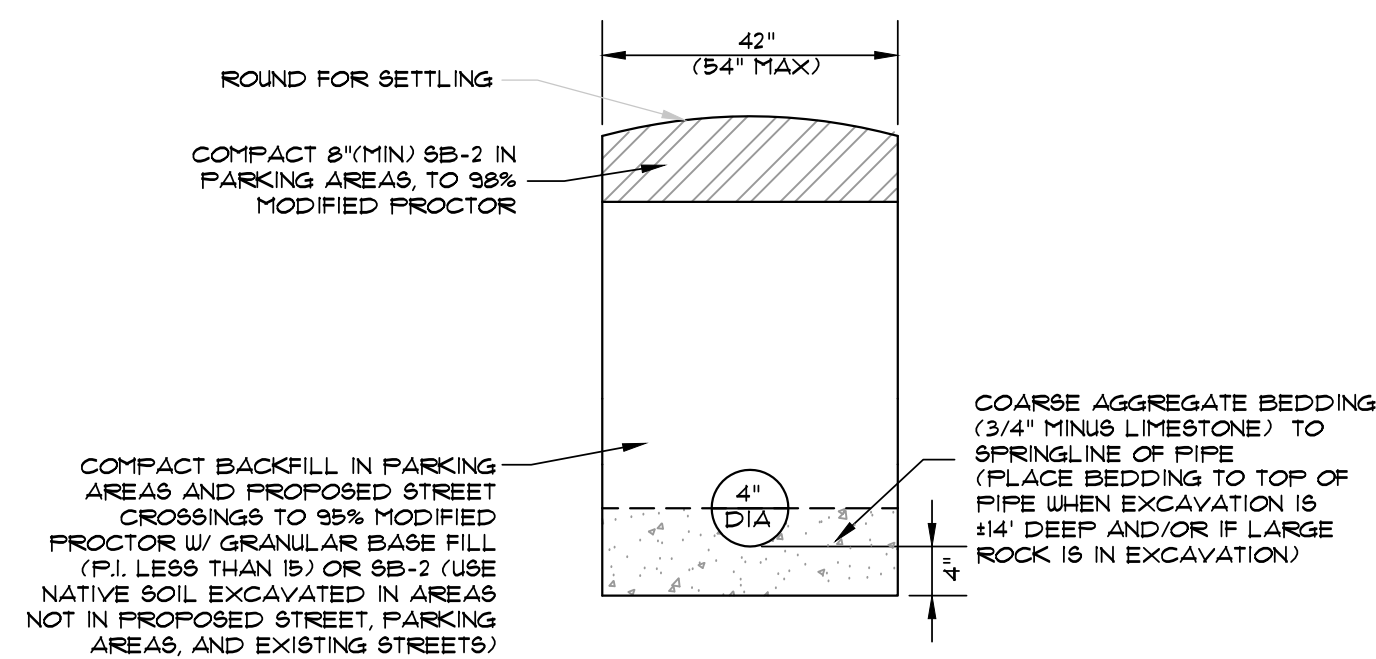


**PARKING STALL SYMBOL**  
SCALE: 3/4" = 1'-0"

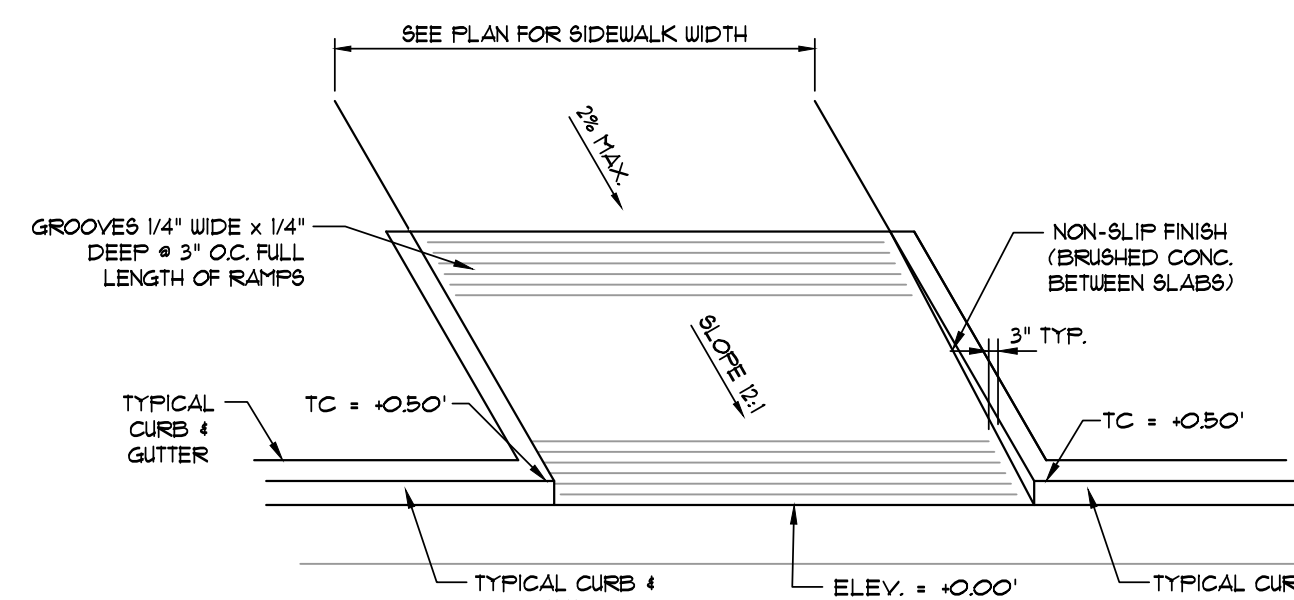


**TYPICAL WATER PIPE BEDDING AND BACKFILL DETAIL**

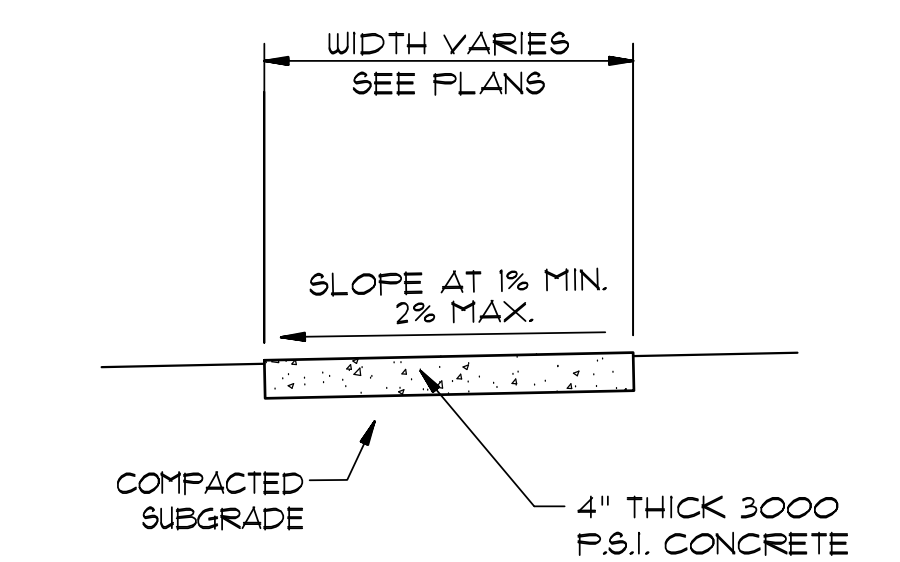
- COURSE AGGREGATE SHALL BE MECHANICALLY TAMPED WHEN USED.
- PIPE IN TRENCH SHALL BE PLACED ON NO LESS THAN 4" OF 3/4" MINUS LESTONE. ALL OVER EXCAVATION SHALL BE COMPACTED BACK TO GRADE W/ BEDDING MATERIAL.
- PVC PIPE SHALL BE SDR-25 AND INSTALLED IN ACCORDANCE WITH UNI-BELL PVC PIPE ASSOCIATION'S RECOMMENDATIONS FOR CONSTRUCTION.



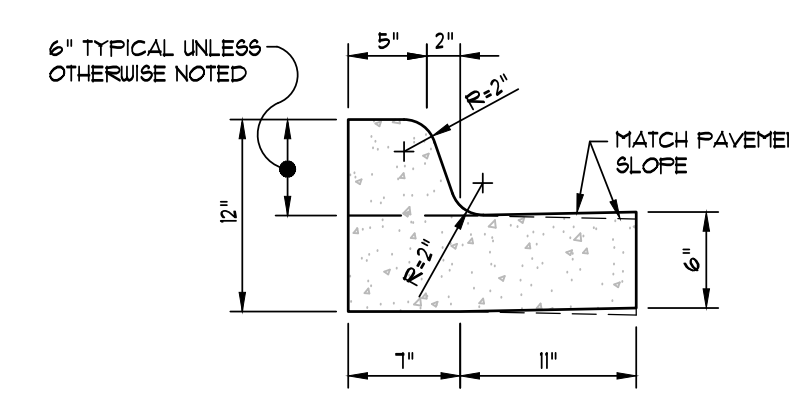
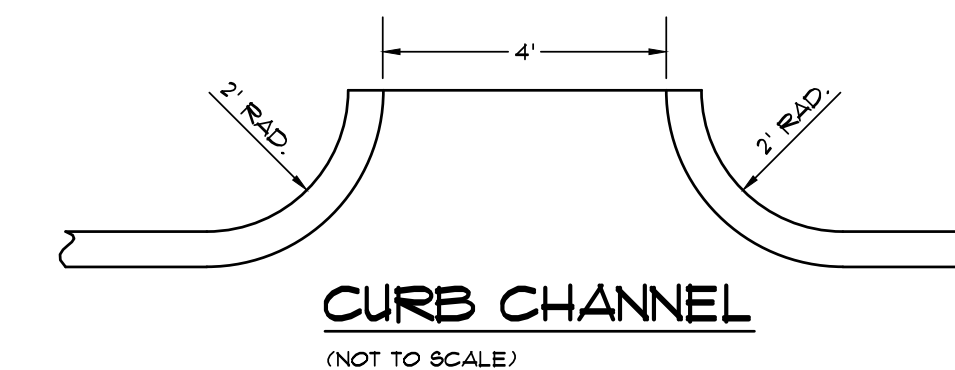
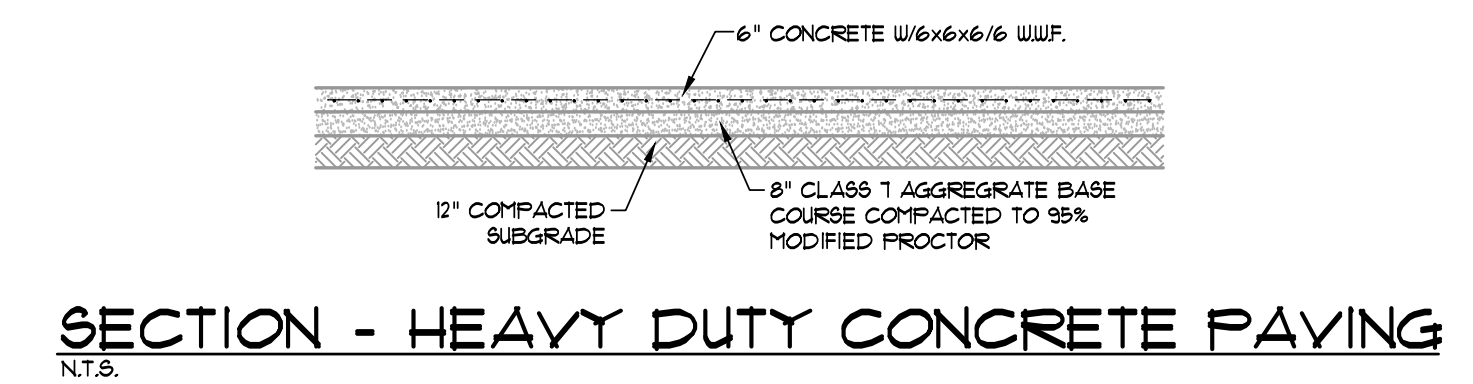
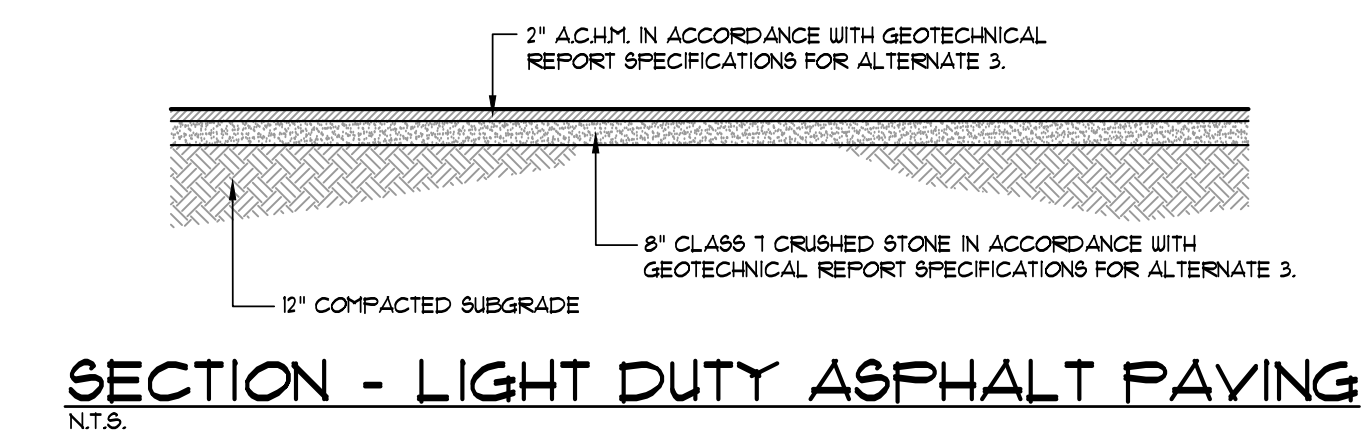
**SEWER TRENCH DETAIL (NON-EXISTING STREET LOCATIONS)**  
NOT TO SCALE



**ACCESS RAMP TYPE "D"**  
NOT TO SCALE

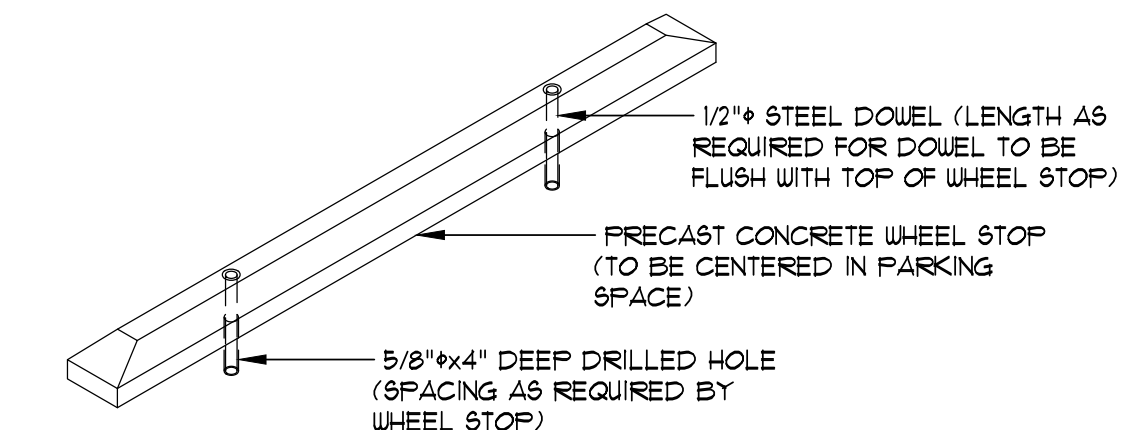


**TYPICAL SIDEWALK SECTION**  
NOT TO SCALE

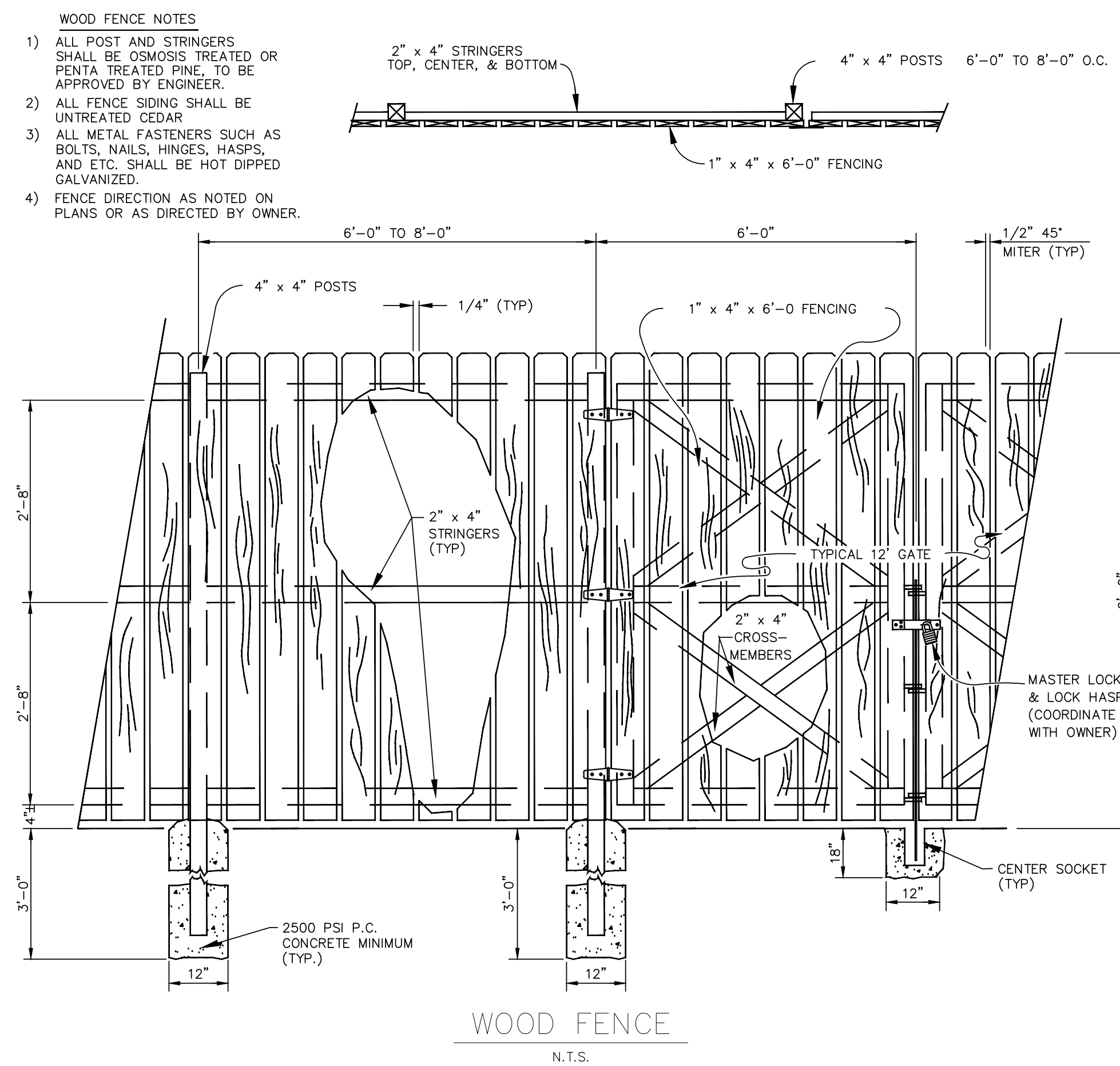


NOTE: CONTRACTION AND EXPANSION JOINTS SHALL BE CONSTRUCTED IN ACCORDANCE WITH THE PLANS AND SPECIFICATIONS.

**TYPICAL CURB & GUTTER TYPE "A-18"**  
NOT TO SCALE

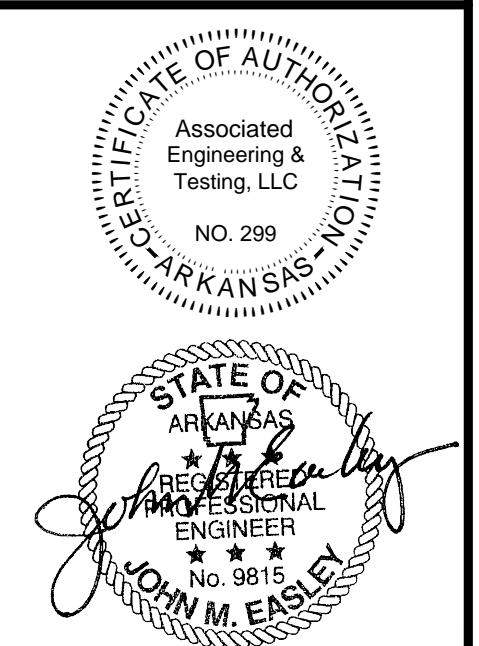
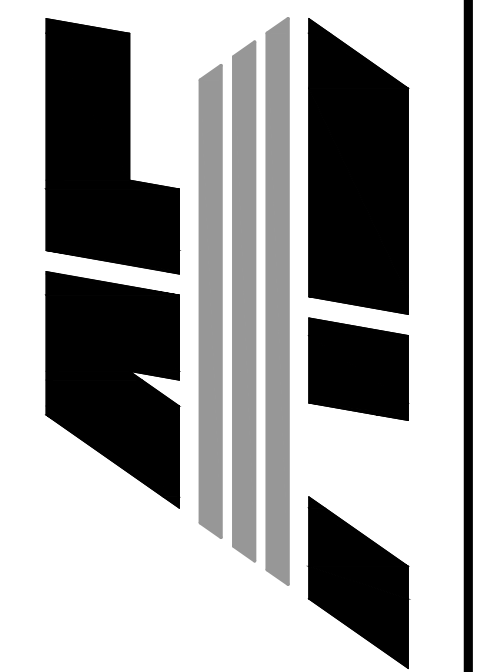


**WHEEL STOP DETAIL**  
NOT TO SCALE



**CRISIS STABILIZATION UNIT**  
**CRAIGHEAD COUNTY**  
**WILLETT ROAD**  
**JONESBORO, ARKANSAS**

**ASSOCIATED ENGINEERING, LLC**  
CIVIL ENGINEERING • LAND SURVEYING  
LAND PLANNING  
103 SOUTH CHURCH STREET • P.O. BOX 1462  
JONESBORO, AR 72403  
PH: 870-932-3594 • FAX: 870-932-1283



NO.	DESCRIPTION	DATE
1	REVISE PARKING	02/28/19
2	REVISE DUMP, PAD/WATER	03/19/19

## STANDARD DETAILS

DATE:	03/11/19	DRAWN:	STH
CADD FILE:	19106-SIDP-R1	CHECKED:	JME
DWG#:	0314112.0002	SHEET	
SCALE:			C8