

POINSETT COUNTY HOUSING AUTHORITY

1104 ELM STREET
MARKED TREE AR 72365

CONSULTANTS

ARCHITECT: Fisher & Arnold, Inc., 9180 Crestwyn Hills Drive, Memphis, Tennessee 38125

ELECTRICAL ENGINEER: Fisher & Arnold, Inc., 9180 Crestwyn Hills Drive, Memphis, Tennessee 38125



BID SET

COPY #3

09/01/20

ABBREVIATIONS:

ABBREVIATION	DEFINITION	ABBREVIATION	DEFINITION
XXX	X RISE IN XX RUN	MAX	MAXIMUM
+	AND	MECH	MECHANICAL
@	AT	MED	MEDICAL
A/C	AIR COND(EN)(ING)	MFR / MANUF.	MANUFACTURE (ER)(ING)
ACT	ACOUSTICAL CEILING TILE (PANEL)	MIN	MINIMUM
ADA	AMERICANS WITH DISABILITIES ACT	MISC	MISCELLANEOUS
ADAAG	AMERICANS WITH DISABILITIES ACT ACCESSIBILITY GUIDELINES	MTL	METAL
ADD	ADDENDUM	MULL	MULLION
ADJ	ADJACENT	N	NORTH
AFF	ABOVE FINISHED FLOOR	N/A	NOT APPLICABLE
ALT	ALTERNATE	NFPA	NATIONAL FIRE PROTECTION ASSOCIATION
ALUM	ALUMINUM	NIC	NOT IN CONTRACT
ANOD	ANODIZE (D)	NO.	NUMBER
AP	ACCESS PANEL	NOM	NOMINAL
AUTO	AUTOMATIC	NTS	NOT TO SCALE
BD	BOARD	O.C.	ON CENTER
BLDG	BUILDING	O.D.	OUTSIDE DIAMETER
BLK	BLOCK	OP	OPENING
BLKG	BLOCKING	OPP.	OPPOSITE
B.O.	BOTTOM OF	PBD	PARTICLE BOARD
BRG	BEARING	PMB	PRE-ENGINEERED METAL BUILDING
C/C	CENTER TO CENTER	PLAM	PLASTIC LAMINATE
CEM	CEMENT (-TITOUS)	PLND / PVD	PLYWOOD
CJ	CONTROL JOINT	PREFAB	PREFABRICATED
CL	CENTER LINE	PT	PORCELAIN TILE
CLG.	CEILING	PTD	PAINTED
CLR	CLEAR	PVC	POLYVINYL CHLORIDE
CMU	CONCRETE MASONRY UNIT	PVMT	PAVEMENT
CNTR.	CENTER	QT	QUARRY TILE
CONC	CONCRETE	RAD	RADIUS
CONF.	CONFERENCE	RB	RUBBER BASE
CONT.	CONTINUOUS	RD	ROOF DRAIN
CPT	CARPET (ED)(ING)	REFRIG. OR REF.	REFRIGERATOR
CT	CERAMIC TILE	REIN	REINFORCE (D)(ING)(MENT)
DBL.	DOUBLE	REQD.	REQUIRED
DIA	DIAMETER	REV	REVISION (S) / REVISED
DIM	DIMENSION	RH	RIGHT HAND
DN	DOWN	RM	ROOM
DS	DOWNSPOUT	R.O.	ROUGH OPENING
DN	DISHWASHER	SHT	SHEET
DWG(S)	DRAWING (S)	SIM.	SIMILAR
DRWR(S)	DRAWER (S)	SPECS	SPECIFICATIONS
EA	EACH	STD	STANDARD
EDF	ELECTRIC DRINKING FOUNTAIN	STL.	STEEL
EIPS	EXTERIOR INSULATION FINISH SYSTEM	STOR. OR STO.	STORAGE
EJ	EXPANSION JOINT	STRUCT	STRUCTURE (AL)
ELEC	ELECTRIC (AL)	SUSP	SUSPENDED
ELEV	ELEVATOR	SYM	SYMMETRY (CAL)
E.O.S.	EDGE OF SLAB	SYS	SYSTEM
EQ	EQUAL	THR	THRESHOLD
EQUIP. OR EQPM.	EQUIPMENT	TOL	TOLERANCE
ETC.	ET CETERA	T.O.	TOP OF
EXIST	EXISTING	TV	TELEVISION
EXP	EXPOSED	TYP.	TYPICAL
EXT	EXTERIOR	UFC	UNIFIED FACILITIES CRITERIA
FD	FLOOR DRAIN	UNF	UNFINISHED
FE	FIRE EXTINGUISHER	UNO	UNLESS NOTED OTHERWISE
FEK	FIRE EXTINGUISHER CABINET	VCT	VINYL COMPOSITION TILE
FIN	FINISH (ED)	VERT	VERTICAL
FLR	FLOOR (ING)	VIF	VERIFY IN FIELD
FT	FOOT / FEET	VVC	VINYL WALL COVERING
F.O.	FACE OF	W	WITH
F.O.B.	FACE OF BRICK	WC	WATER CLOSET
GA	GAUGE	WD	WOOD
GAL	GALLON	WG	WIRED GLASS
GB	GRAB BAR (S)	WH	WATER HEATER
GC	GENERAL CONTRACTOR	WIN	WINDOW
GFI	GROUND FAULT INTERRUPT	W/O	WITHOUT
GWB	GYPSUM WALLBOARD (CONSTRUCTION)	W.P.	WEATHERPROOF
GYP. BD.	GYPSUM BOARD	WR	WATER RESISTANT
HC	HANDICAPPED	WWM	WELDED WIRE MESH
HDR	HEADER		
HDM	HARDWARE		
HM	HOLLOW METAL		
HORIZ	HORIZONTAL		
HR	HOUR		
HT	HEIGHT		
HVAC	HEATING / VENTILATING / AIR CONDITIONING		
HWD	HARDWOOD		
IBC	INTERNATIONAL BUILDING CODE		
I.D.	INSIDE DIAMETER		
IN	INCH (ES)		
INT	INTERIOR		
JNT	JOINT		
JST	JOIST		
LAM	LAMINATE		
LAV	LAVATORY		
LH	LEFT HAND		

GENERAL NOTES:

- REFER TO THIS SHEET FOR THE MATERIAL AND SYMBOLS INDICATION KEY. NOT ALL SYMBOLS/ ABBREVIATIONS/ DETAILS MAY BE USED.
- ALL WORK SHALL BE PERFORMED IN STRICT COMPLIANCE WITH ALL GOVERNING CODES AND STANDARDS.
- WHERE DISCREPANCIES OCCUR BETWEEN FLOOR PLANS, DETAILS AND LARGESCALE PLANS, CONSULT ARCHITECT FOR CLARIFICATIONS PRIOR TO PROCEEDING WITH WORK. WHERE DISCREPANCIES OCCUR BETWEEN ARCHITECTURAL AND ENGINEERING DRAWINGS, CONSULT ARCHITECT FOR CLARIFICATION.
- COORDINATE ALL WORK BETWEEN ALL TRADES PRIOR TO PROCEEDING WITH WORK.
- CONTRACTOR, MATERIAL SUPPLIERS & INSTALLERS ARE RESPONSIBLE TO FIELD VERIFY ALL CONDITIONS PRIOR TO PROCEEDING WITH ANY WORK. ALL DISCREPANCIES BETWEEN FIELD CONDITIONS AND DRAWINGS SHALL BE REPORTED TO THE ARCHITECT BEFORE PROCEEDING WITH ANY WORK.
- DO NOT SCALE DRAWINGS. IF DIMENSIONS CAN NOT BE OBTAINED BASED ON THE DRAWING INFORMATION, CONSULT THE ARCHITECT FOR CLARIFICATION.
- INTERIOR DIMENSIONS ON FLOOR PLANS ARE TO FACE OF WALLBOARD OR MASONRY, UNLESS NOTED OTHERWISE. EXTERIOR DIMENSIONS ARE TO FACE OF EXTERIOR SHEATHING OR MASONRY, UNLESS NOTED OTHERWISE.
- ALL DIMENSIONS SHOWN ON PLANS FOR MASONRY OR CONCRETE WALLS ARE TO THE NOMINAL FACE OF MASONRY OR CONCRETE, UNLESS NOTED OTHERWISE.
- SEPARATE ALL DISSIMILAR MATERIALS AS REQUIRED TO PREVENT CORROSION AS RECOMMENDED BY THE RESPECTIVE PRODUCT MANUFACTURER.
- MASONRY OPENINGS ON FLOOR PLANS AND PLAN DETAILS ARE NOMINAL.
- ALL INTERIOR MASONRY LEFT EXPOSED SHALL HAVE BULL NOSED OUTSIDE CORNERS, UNLESS OTHERWISE NOTED.
- REFER TO PLUMBING, FIRE PROTECTION, HVAC AND ELECTRICAL DOCUMENTS FOR INFORMATION PERTAINING TO THAT RESPECTIVE TRADE. FIELD VERIFY AND COORDINATE PLACEMENT OF ALL RESPECTIVE VIEW FIXTURES, AND REPORT ANY AND ALL DISCREPANCIES TO THE ARCHITECT PRIOR TO PROCEEDING WITH WORK.
- REFER TO PLUMBING, FIRE PROTECTION, HVAC AND ELECTRICAL DOCUMENTS FOR LOCATION AND NUMBER OF ALL REQUIRED WALL AND/OR CEILING ACCESS PANELS. CLARIFY WITH THE ARCHITECT THE EXACT LOCATION OF ALL ACCESS PANELS INDICATED ON THE PLUMBING, FIRE PROTECTION, HVAC AND ELECTRICAL DOCUMENTS, BUT NOT SHOWN ON THE ARCHITECTURAL DOCUMENTS.
- ALL EXTERIOR OUTWARD SWINGING DOORS ARE TO BE PROVIDED WITH LATCH GUARDS TO PREVENT DOOR STRIKES FROM BEING PICKED.
- ALL POWER/DATA/CABLE/PHONE OUTLETS AND COVERS - COLOR TO BE SELECTED BY ARCHITECT.
- ALL POWER/DATA/CABLE/PHONE OUTLETS LOCATED IN FINISHED WOODWORK TO BE SELECTED BY ARCHITECT - ALL COVERS TO BE WOOD - STAINED TO MATCH SURROUNDING WOOD.
- ALL SLOPED ROOF STRUCTURES TO BE PROVIDED WITH RAIN COLLECTORS AND DOWNSPOUTS.
- ALL DOWNSPOUTS ARE TO BE CONNECTED TO THE SITE STORM SYSTEM UNLESS OTHERWISE NOTED.
- ANY RETROFIT REQUIRING DEMOLITION OF EXISTING TILE WORK WILL REQUIRE THE CONTRACTOR TO REMOVE THE TILE AND GROUT BEDS, ANY LOOSE MATERIAL AND POUR NEW SELF-LEVELING MUD BEDS TO PROVIDE A NEW SOUND SURFACE TO WHICH TO INSTALL THE NEW TILE WORK.
- ALL HANDRAILS TO BE PROVIDED WITH 1'-0" EXTENSION AT THE TOP AND BOTTOM OF RAMPS AND STAIRS.
- GROMMET HOLES AND ROUNDED (EASED) EXPOSED CORNERS ARE REQUIRED TO BE PROVIDED ON ALL BUILT-IN WORK SURFACES AND COUNTERTOPS.
- NO OTHER NOTES, COMMENTS OR APPENDA CAN OR WILL OVERRULE THE INSTALLER'S OBLIGATIONS TO PROVIDE ANY ADDITIONAL COMPONENT NECESSARY TO PROVIDE THE SPECIFIED WARRANTY PERIOD OF THEIR PRODUCT.

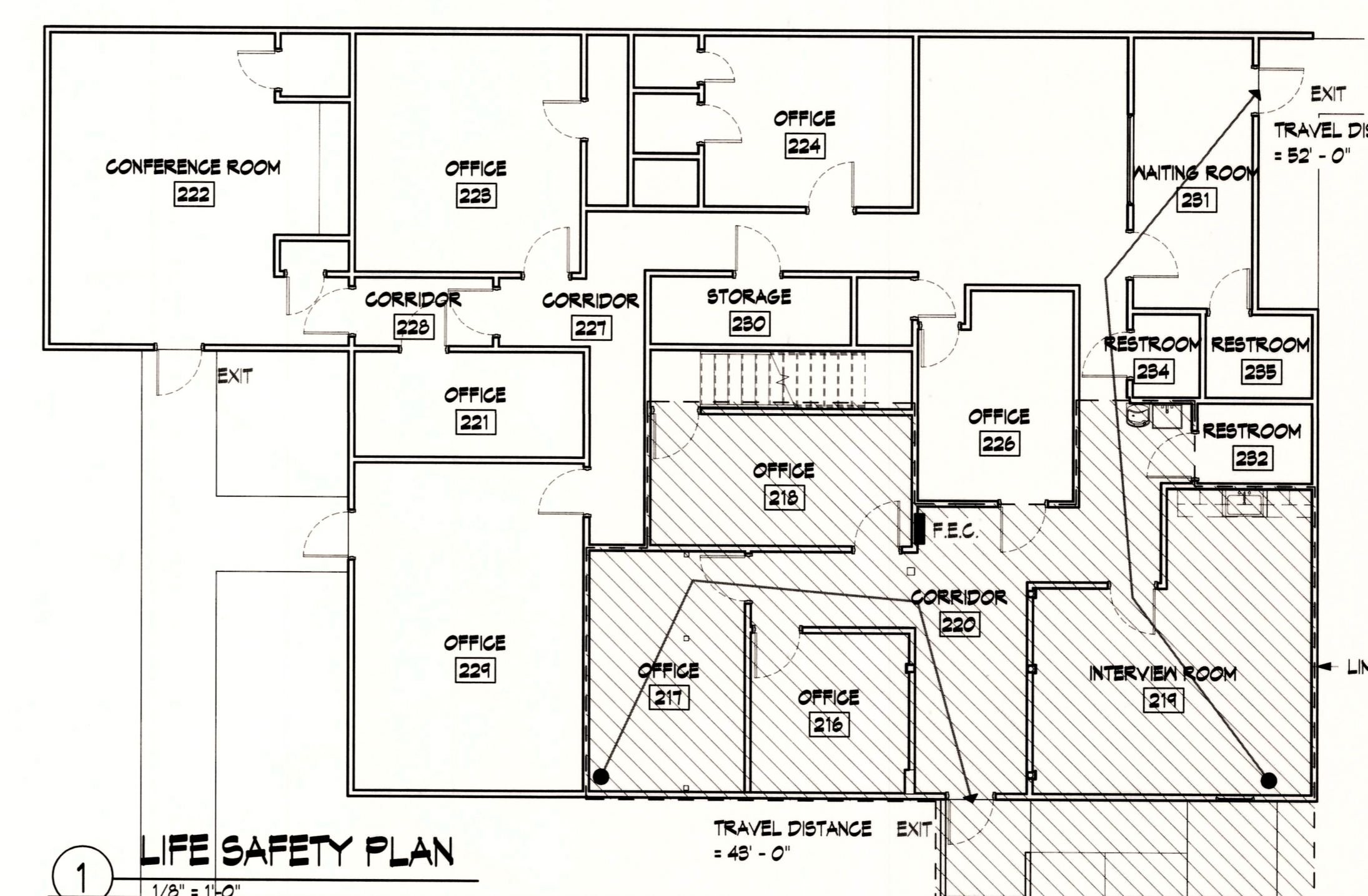
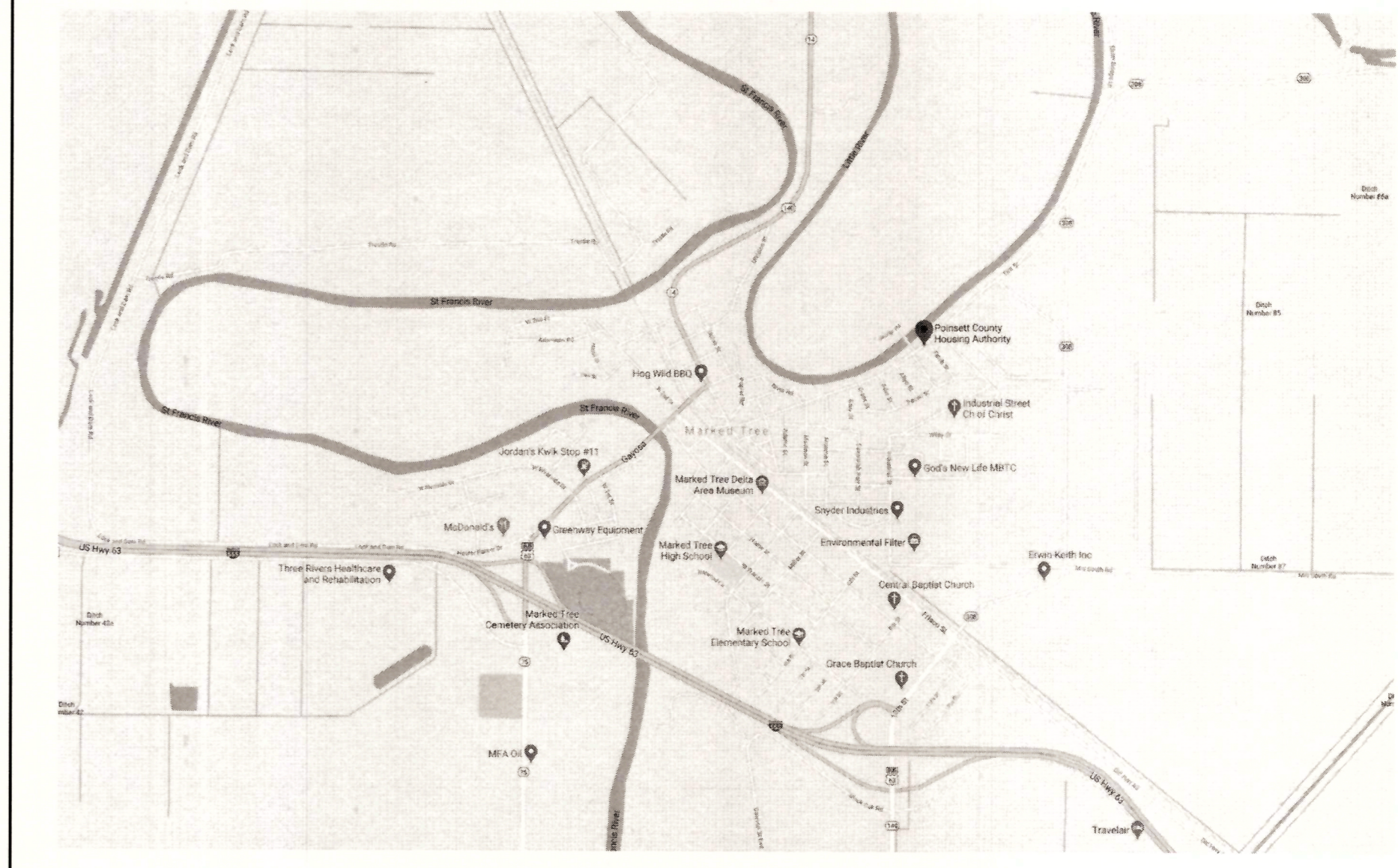
PLAN LEGEND:

- BATT INSULATION
- BRICK
- CONCRETE
- CONCRETE MASONRY UNIT (CMU)
- EARTH
- GRAVEL
- GROUT
- GYPSUM BOARD
- RIGID INSULATION
- PLYWOOD
- STEEL
- STONE
- WOOD
- DOOR NUMBER
- ROOM NUMBER
- WINDOW ELEVATION
- WALL TYPE REFERENCE
- SECTION KEY
- ELEVATION KEY
- SPOT ELEVATION KEY

SHEET LIST:

Sheet Number	Sheet Name	Sheet Issue Date	Current Revision
COVER	COVER	09/01/20	
GENERAL			
G001	PROJECT DATA	09/01/20	
G002	TYPICAL ACCESSIBLE DETAILS	09/01/20	
G003	ON THE DRAWING SPECS	09/01/20	
G004	ON THE DRAWINGS SPECS	09/01/20	
ARCHITECTURE			
A101	FIRST FLOOR PLAN - PROPOSED	09/01/20	
A102	FIRST FLOOR REFLECTED CEILING PLAN - PROPOSED	09/01/20	
A501	DOOR AND ROOM FINISH SCHEDULES, WALL TYPES	09/01/20	
ELECTRICAL			
E1.0	GENERAL NOTES, SYMBOLS, DETAILS, & FIXTURE SCHEDULE	09/01/20	
E2.0	FIRST FLOOR PLAN - POWER	09/01/20	
E3.0	FIRST FLOOR PLAN - LIGHTING	09/01/20	

PROJECT LOCATION:



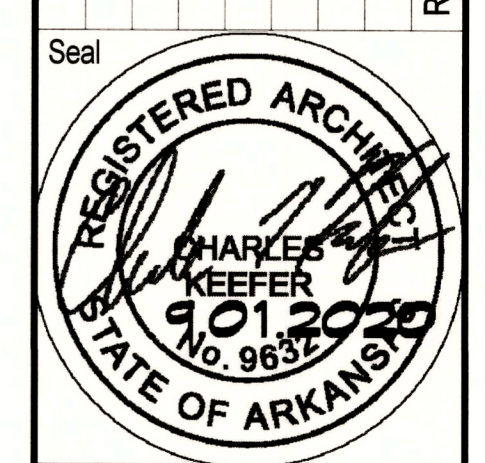
LIFE SAFETY:
 TOTAL BUILDING AREA= 9511 SF
 BUSINESS OCCUPANCY= 1/100 SF
 TOTAL OCCUPANTS= 96 OCCUPANTS
 MIN. NUMBER OF EXITS= 1
 PROVIDED EXITS= 3
 MAX. TRAVEL DISTANCE= 200 FT
 DEAD END CORRIDOR MAX= 20' - 0"

3'-0" WIDE DOOR PROVIDES EGRESS CAPACITY FOR 180 OCCUPANTS (2' PER OCCUPANT)

FISHER ARNOLD
 ENGINEERS | ARCHITECTS | CONSULTANTS | PLANNERS
 9180 Crestwyn Hills Drive | Memphis, Tennessee 38125-8538
 901.748.1811 | Fax: 901.748.3115 | www.fisherarnold.com

POINSETT COUNTY HOUSING AUTHORITY
 1104 ELM STREET
 MARKED TREE AR 72365

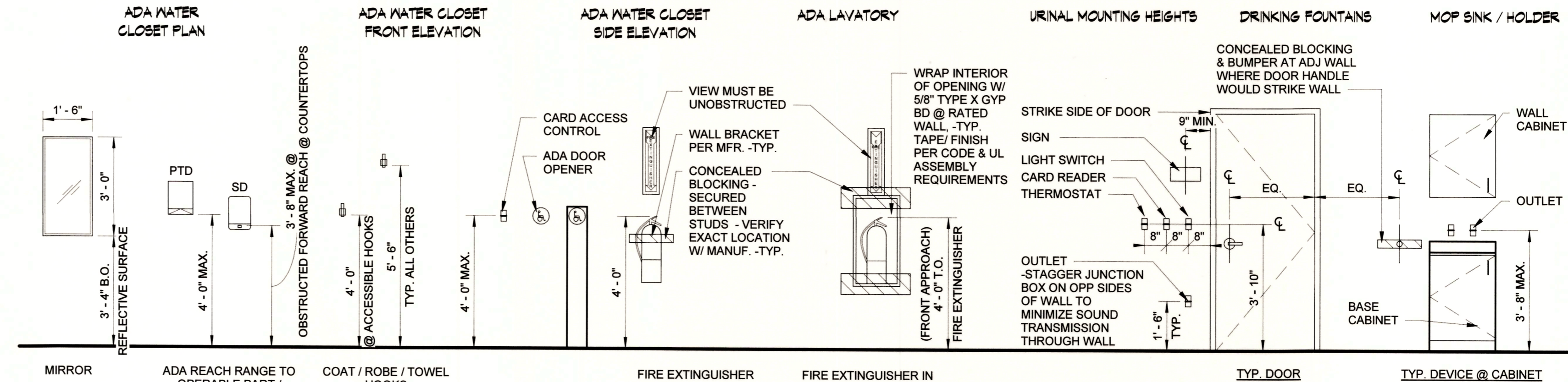
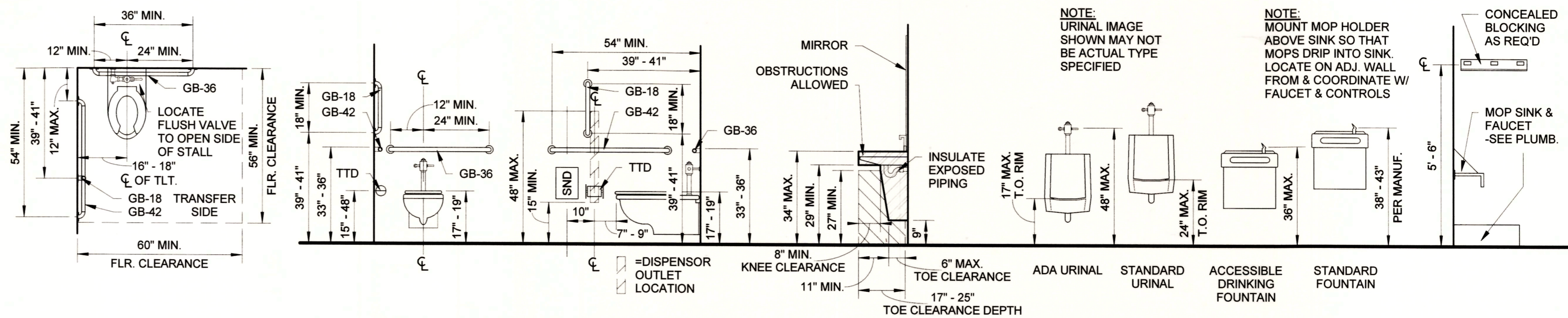
Rev.	Date	Revision Description



Issue Date: 09/01/20
 Project No: POINSETT.0003AR
 Drawn By: ST
 Checked By: CK
 Sheet Title:

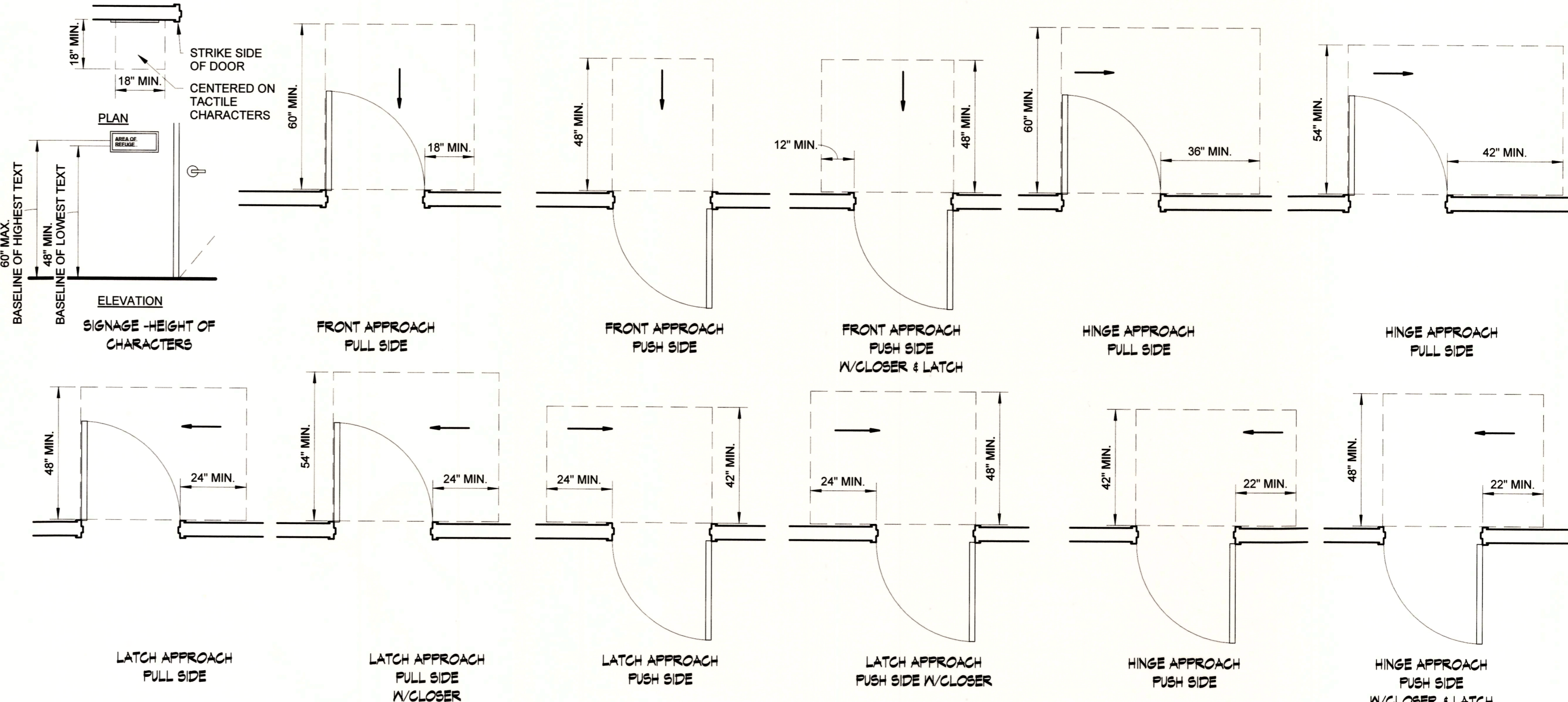
PROJECT DATA

G001

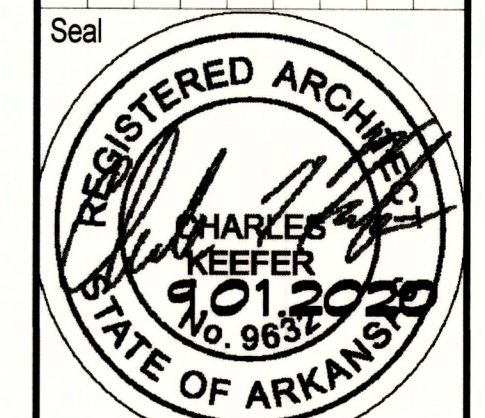


TYPICAL ACCESSIBLE TOILET ROOM ACCESSORIES MOUNTING HEIGHTS **ACCESS INTERFACES** **EMERGENCY EQUIPMENT MOUNTING HEIGHTS** **DEVICES AND SIGNAGE**

- NOTES:**
1. CONTRACTORS TO VERIFY THAT ALL ACCESSORIES ARE MOUNTED AT ADA COMPLIANT HEIGHT AND PER MANUFACTURER'S RECOMMENDATIONS. CONSULT THE ARCHITECT FOR ANY CLARIFICATION NEEDED.
 2. GENERAL CONTRACTOR TO PROVIDE FIRE TREATED WOOD BLOCKING BETWEEN STUDS OR SECURE ANCHORS PER CODE FOR ALL GRAB BARS & ACCESSORIES PER MANUFACTURER'S RECOMMENDATIONS.
 3. SIMILAR ACCESSORIES ARE TO BE MOUNTED AT CONSISTANT HEIGHTS THROUGHOUT THE ENTIRE PROJECT.
 4. WHERE ACCESSORIES ARE ADJACENT TO ONE ANOTHER, MOUNT SO THAT TOP OF ACCESSORIES ALIGN WHERE POSSIBLE.



Rev.	Date	Revision Description



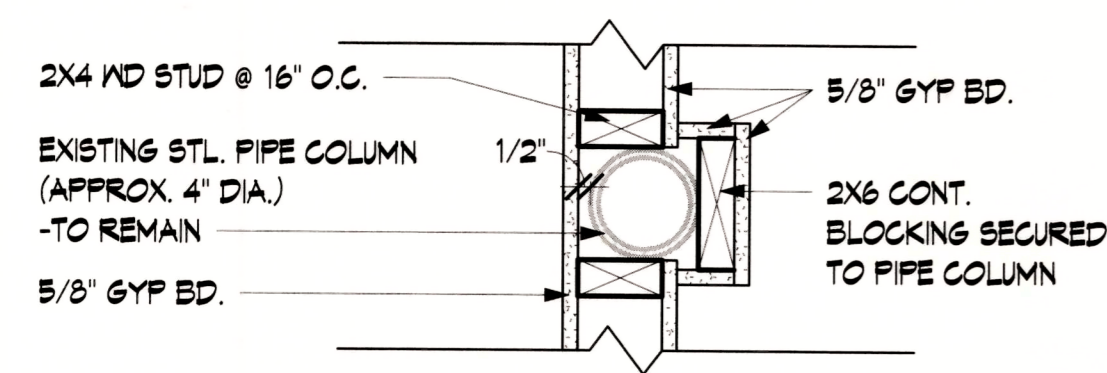
Issue Date: 09/01/20
 Project No: POINSETT.0003AR
 Drawn By: ST
 Checked By: CK
 Sheet Title:

TYPICAL ACCESSIBLE DETAILS

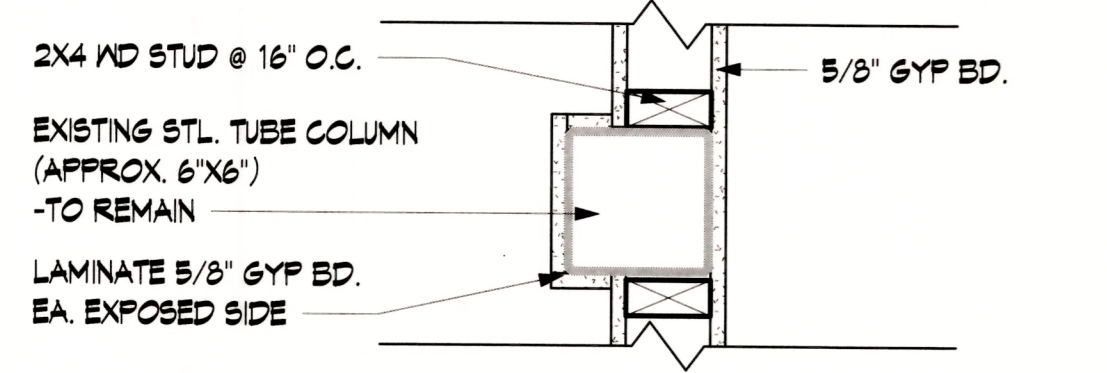
Table with columns A-R and rows 1-12. Contains detailed procurement and contracting requirements for Division 01 11 13 - Work Covered by Contract Documents. Includes sections on substitutions, payment procedures, progress meetings, and quality requirements.

FISHER ARNOLD ENGINEERS | ARCHITECTS | CONSULTANTS | PLANNERS. POINSETT COUNTY HOUSING AUTHORITY. 9180 Crestwyn Hills Drive | Memphis, Tennessee 38125-8538. 901.748.1811 | Fax: 901.748.3115 | www.fisherarnold.com. 1104 ELM STREET MARKED TREE AR 72365. Includes a circular seal for Registered Architect Charles W. Keefer, State of Arkansas, No. 9637.

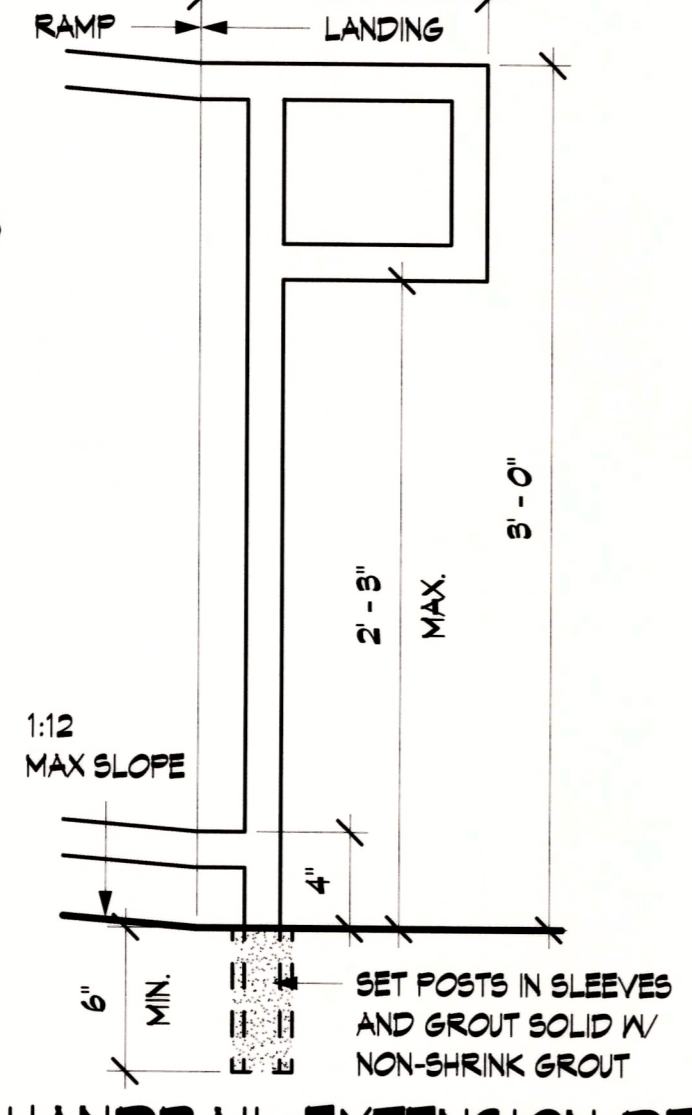
Revision table with columns: Rev, Date, Description. Row 1: G003. Includes project information: Issue Date: 09/01/20, Project No: POINSETT.0003AR, Drawn By: ST, Checked By: CK, Sheet Title: ON THE DRAWING SPECS.



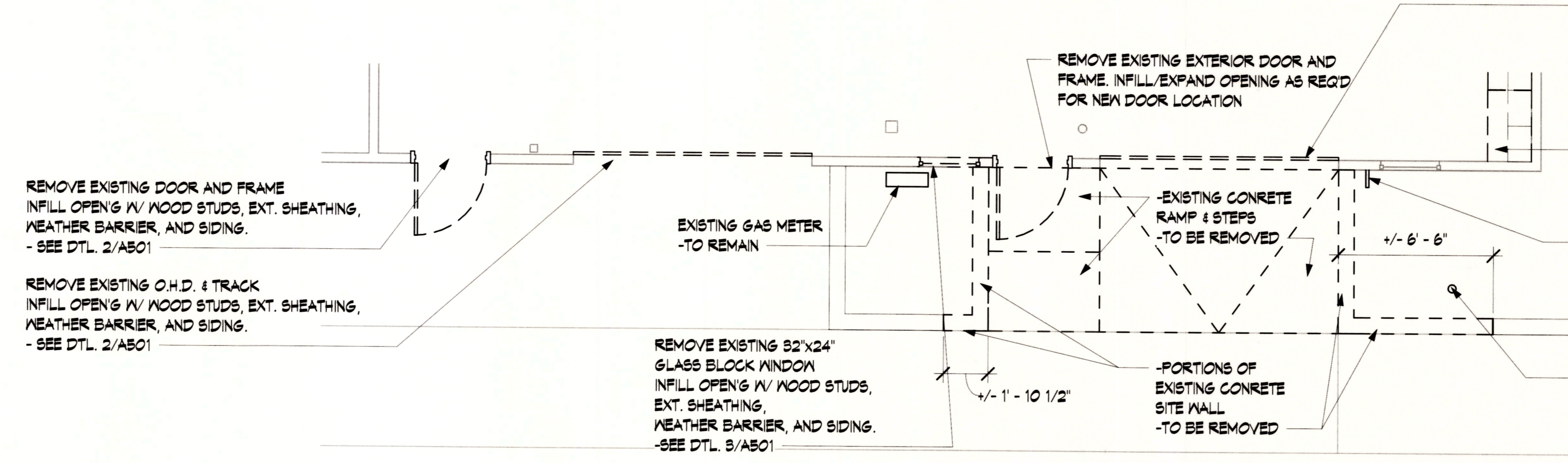
1 TYPICAL PIPE COLUMN FURR OUT
1 1/2" = 1'-0"



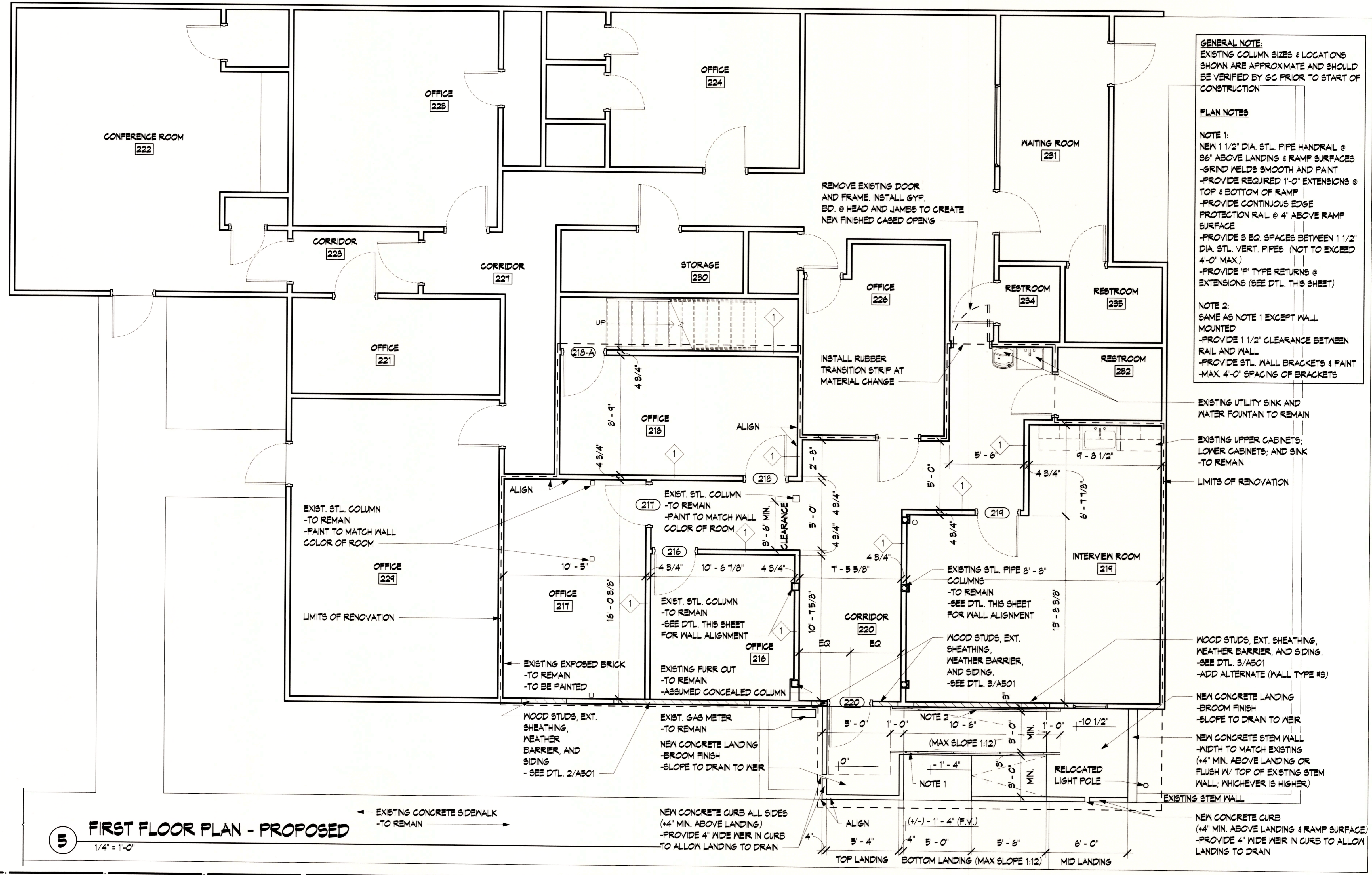
2 TUBE COLUMN FURR OUT
1 1/2" = 1'-0"



3 HANDRAIL EXTENSION DETAIL
1 1/2" = 1'-0"



4 EXTERIOR ACCESS DEMOLITION PLAN
1/4" = 1'-0"



5 FIRST FLOOR PLAN - PROPOSED
1/4" = 1'-0"

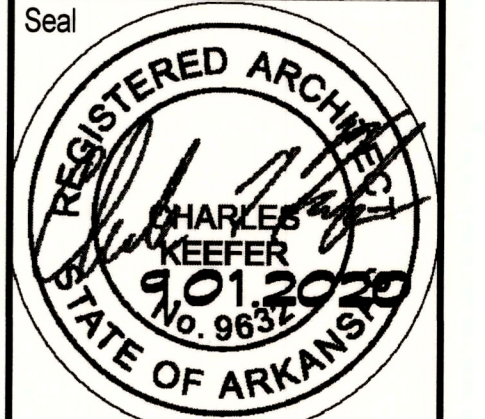
GENERAL NOTE:
EXISTING COLUMN SIZES & LOCATIONS SHOWN ARE APPROXIMATE AND SHOULD BE VERIFIED BY GC PRIOR TO START OF CONSTRUCTION

PLAN NOTES

NOTE 1:
NEW 1 1/2" DIA. STL. PIPE HANDRAIL @ 36" ABOVE LANDING & RAMP SURFACES
-GRIND WELDS SMOOTH AND PAINT
-PROVIDE REQUIRED 1'-0" EXTENSIONS @ TOP & BOTTOM OF RAMP
-PROVIDE CONTINUOUS EDGE PROTECTION RAIL @ 4" ABOVE RAMP SURFACE
-PROVIDE 3 EQ. SPACES BETWEEN 1 1/2" DIA. STL. VERT. PIPES (NOT TO EXCEED 4'-0" MAX.)
-PROVIDE P TYPE RETURNS @ EXTENSIONS (SEE DTL. THIS SHEET)

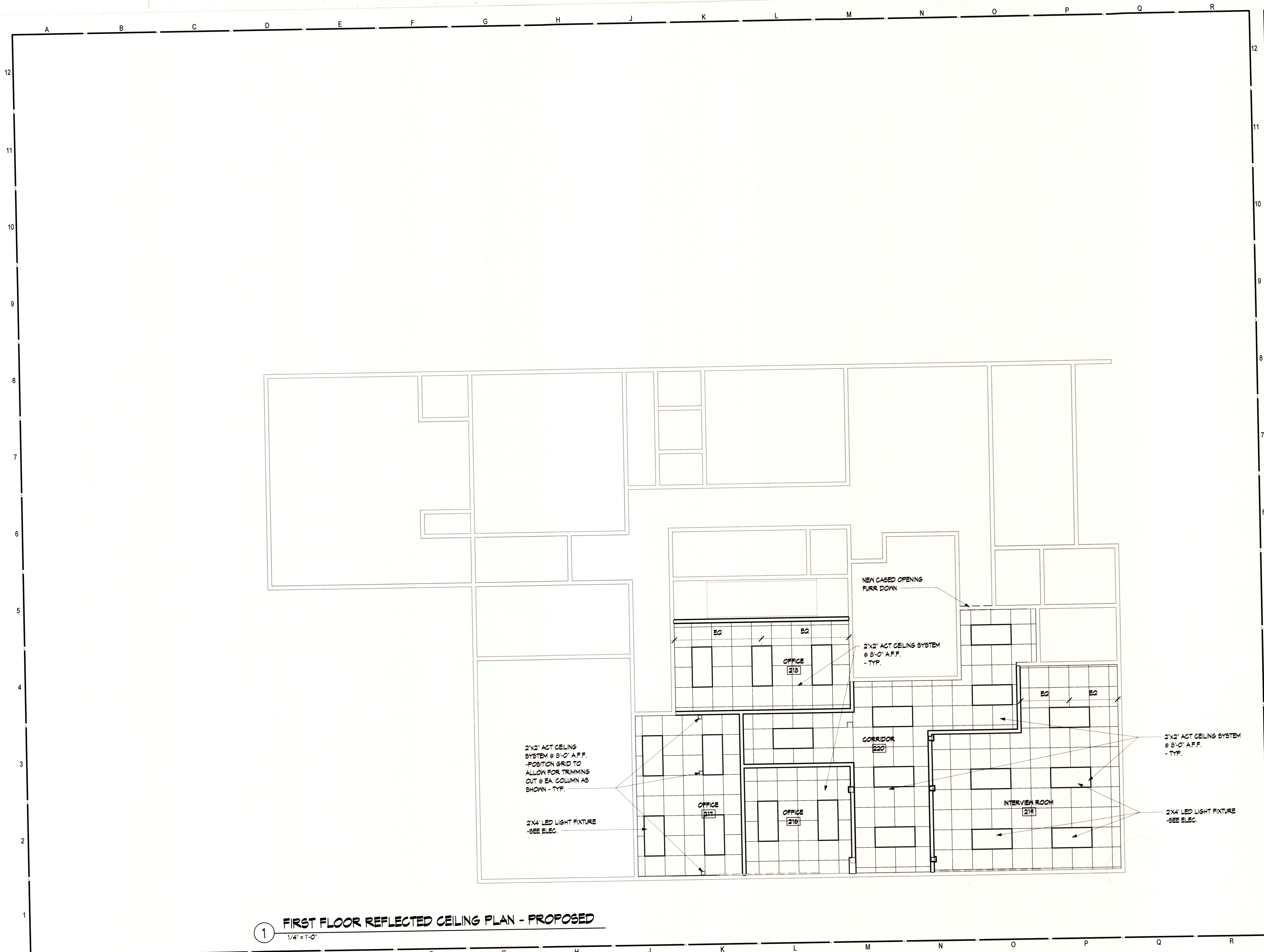
NOTE 2:
SAME AS NOTE 1 EXCEPT WALL MOUNTED
-PROVIDE 1 1/2" CLEARANCE BETWEEN RAIL AND WALL
-PROVIDE STL. WALL BRACKETS & PAINT
-MAX. 4'-0" SPACING OF BRACKETS

Rev.	Date	Revision Description



Issue Date: 09/01/20
Project No: POINSETT.0003AR
Drawn By: ST
Checked By: CK
Sheet Title:

FIRST FLOOR PLAN - PROPOSED

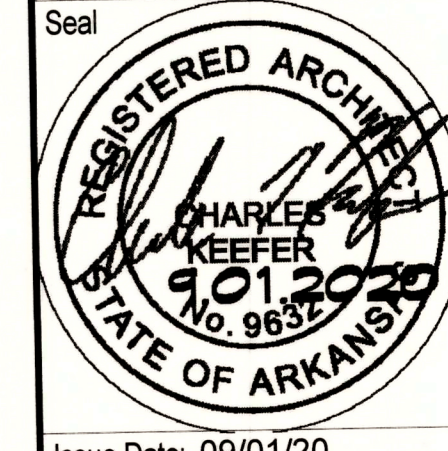


1 FIRST FLOOR REFLECTED CEILING PLAN - PROPOSED
1/4" = 1'-0"

FISHER ARNOLD
ENGINEERS | ARCHITECTS | CONSULTANTS | PLANNERS
9180 Crestwyn Hillis Drive | Memphis, Tennessee 38125-8538
901.748.1811 | Fax: 901.748.3115 | www.fisherarnold.com
© 2014 Fisher Arnold, all rights reserved.

POINSETT COUNTY HOUSING AUTHORITY
1104 ELM STREET
MARKED TREE AR 72365

Rev.	Date	Revision Description



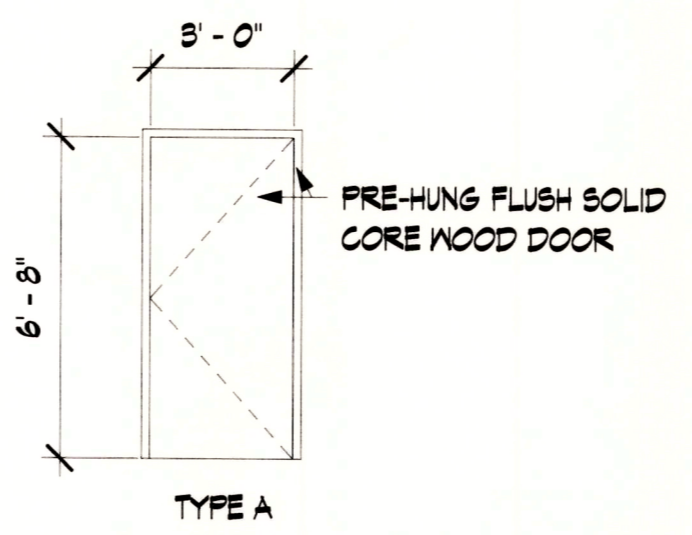
Issue Date: 09/01/20
Project No: POINSETT 0003AR
Drawn By: ST
Checked By: CK
Sheet Title:

FIRST FLOOR REFLECTED CEILING PLAN - PROPOSED

A102

A B C D E F G H J K L M N O P Q R

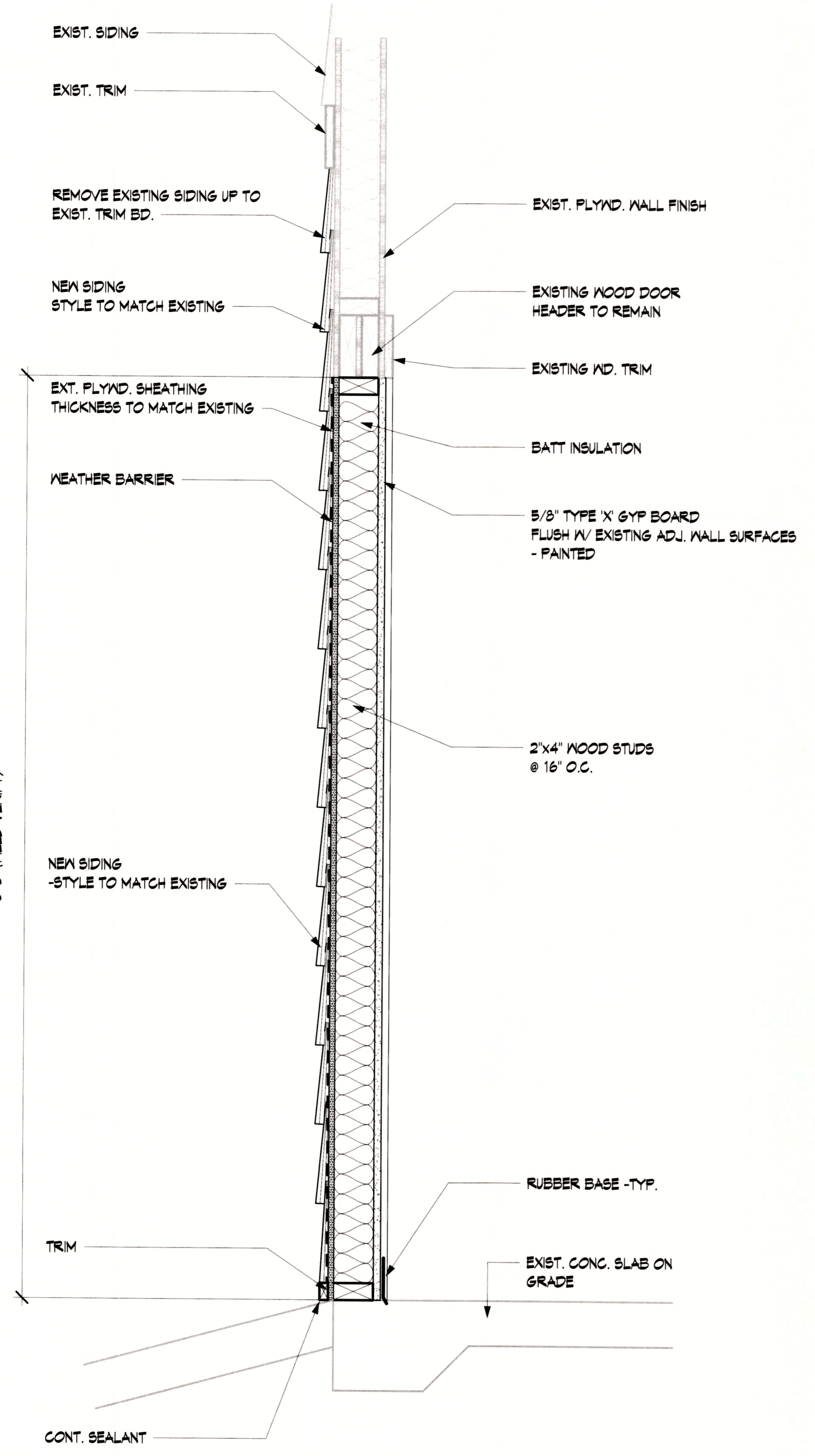
12
11
10
9
8
7
6
5
4
3
2
1



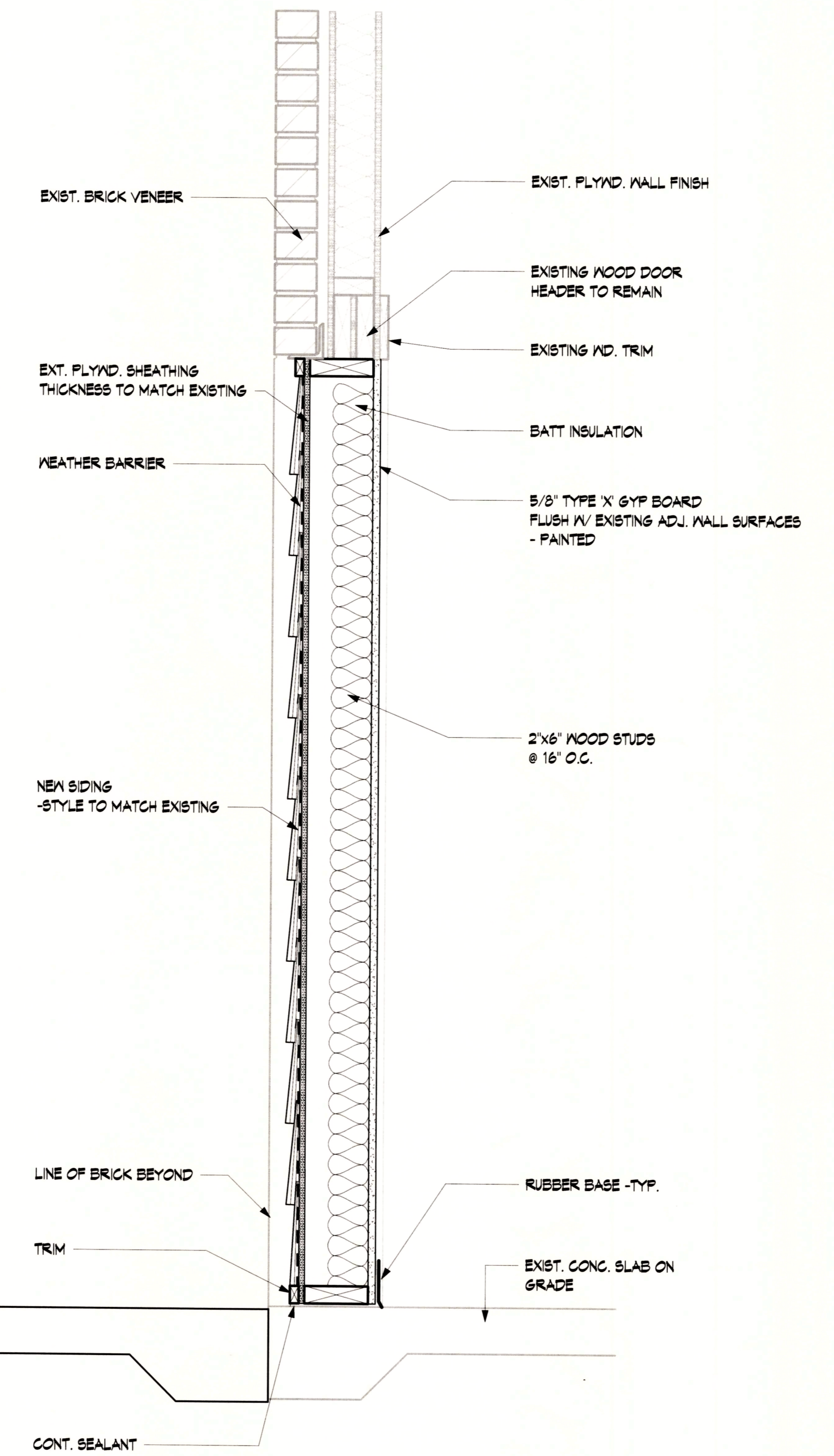
DOOR & FRAME ELEVATION
1/4" = 1'-0"

DOOR SCHEDULE									
Mark	Width	Head Height	Door Type	Thickness	Finish	Frame Type	Frame Material	Fire Rating	Comments
216	3' - 0"	6' - 8"	SCW FLUSH	1 1/2"	PTD	A	WD		PRE-HUNG
217	3' - 0"	6' - 8"	SCW FLUSH	1 1/2"	PTD	A	WD		PRE-HUNG
218	3' - 0"	6' - 8"	SCW FLUSH	1 1/2"	PTD	A	WD		PRE-HUNG
218-A	3' - 0"	6' - 8"	SCW FLUSH	1 1/2"	PTD	A	WD		PRE-HUNG
219	3' - 0"	6' - 8"	SCW FLUSH	1 1/2"	PTD	A	WD		PRE-HUNG
220	3' - 0"	6' - 8"	SCW FLUSH	1 1/2"	PTD	A	WD		PRE-HUNG

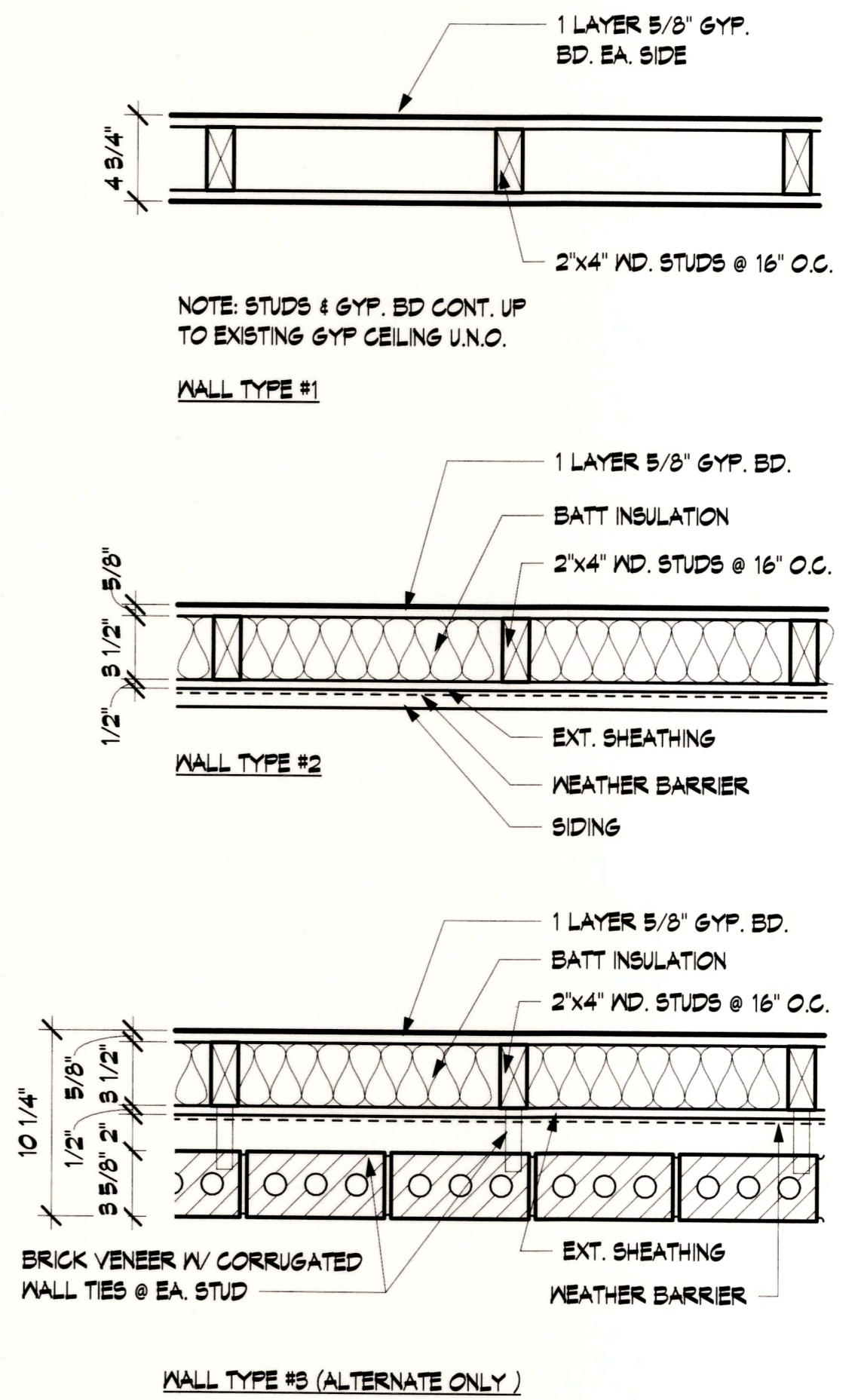
ROOM FINISH SCHEDULE						
Number	Name	Base Finish	Floor Finish	Wall Finish	Ceiling Finish	Comments
216	OFFICE	RUBBER BASE	VCT	PTD GB	ACT	
217	OFFICE	RUBBER BASE	VCT	PTD GB	ACT	
218	OFFICE	RUBBER BASE	VCT	PTD GB	ACT	
219	INTERVIEW ROOM	RUBBER BASE	VCT	PTD GB	ACT	
220	CORRIDOR	-	-	-	-	EXISTING SPACE - NO SCOPE
221	OFFICE	-	-	-	-	EXISTING SPACE - NO SCOPE
222	CONFERENCE ROOM	-	-	-	-	EXISTING SPACE - NO SCOPE
223	OFFICE	-	-	-	-	EXISTING SPACE - NO SCOPE
224	OFFICE	-	-	-	-	EXISTING SPACE - NO SCOPE
226	OFFICE	-	-	-	-	EXISTING SPACE - NO SCOPE
227	CORRIDOR	-	-	-	-	EXISTING SPACE - NO SCOPE
228	CORRIDOR	-	-	-	-	EXISTING SPACE - NO SCOPE
229	OFFICE	-	-	-	-	EXISTING SPACE - NO SCOPE
230	STORAGE	-	-	-	-	EXISTING SPACE - NO SCOPE
231	WAITING ROOM	-	-	-	-	EXISTING SPACE - NO SCOPE
232	RESTROOM	-	-	-	-	EXISTING SPACE - NO SCOPE
234	RESTROOM	-	-	-	-	EXISTING SPACE - NO SCOPE
235	RESTROOM	-	-	-	-	EXISTING SPACE - NO SCOPE



DOOR INFILL DETAIL @ SIDING
1 1/2" = 1'-0"



DOOR INFILL DETAIL @ BRICK
1 1/2" = 1'-0"

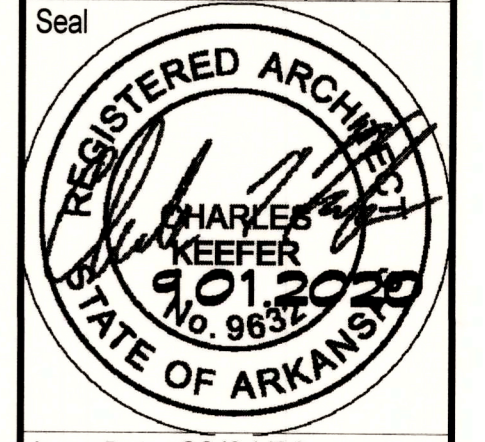


WALL TYPES
1 1/2" = 1'-0"

FISHER ARNOLD
ENGINEERS | ARCHITECTS | CONSULTANTS | PLANNERS
9180 Crestwyn Hills Drive | Memphis, Tennessee 38125-8538
901.748.1811 | Fax: 901.748.3115 | www.fisherarnold.com
© 2014 Fisher Arnold, all rights reserved.

POINSETT COUNTY HOUSING AUTHORITY
1104 ELM STREET
MARKED TREE AR 72365

Rev.	Date	Revision Description

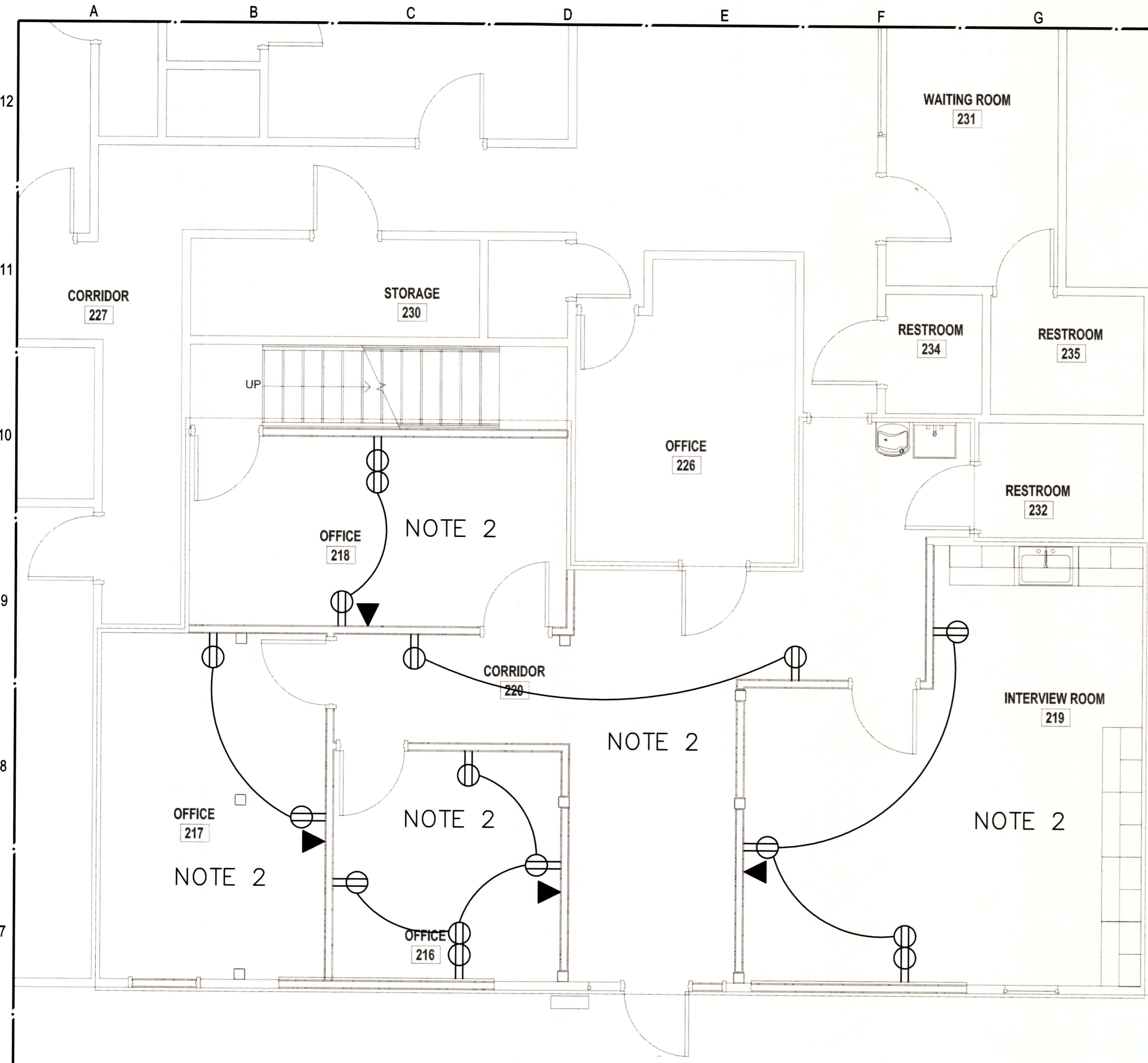


Issue Date: 09/01/20
Project No: POINSETT.0003AR
Drawn By: ST
Checked By: CK
Sheet Title:

DOOR AND ROOM FINISH SCHEDULES, WALL TYPES

A501

A B C D E F G H J K L M N O P Q R



01 Floor Plan - Power & Auxiliary
1/4" = 1'-0"

NOTES:

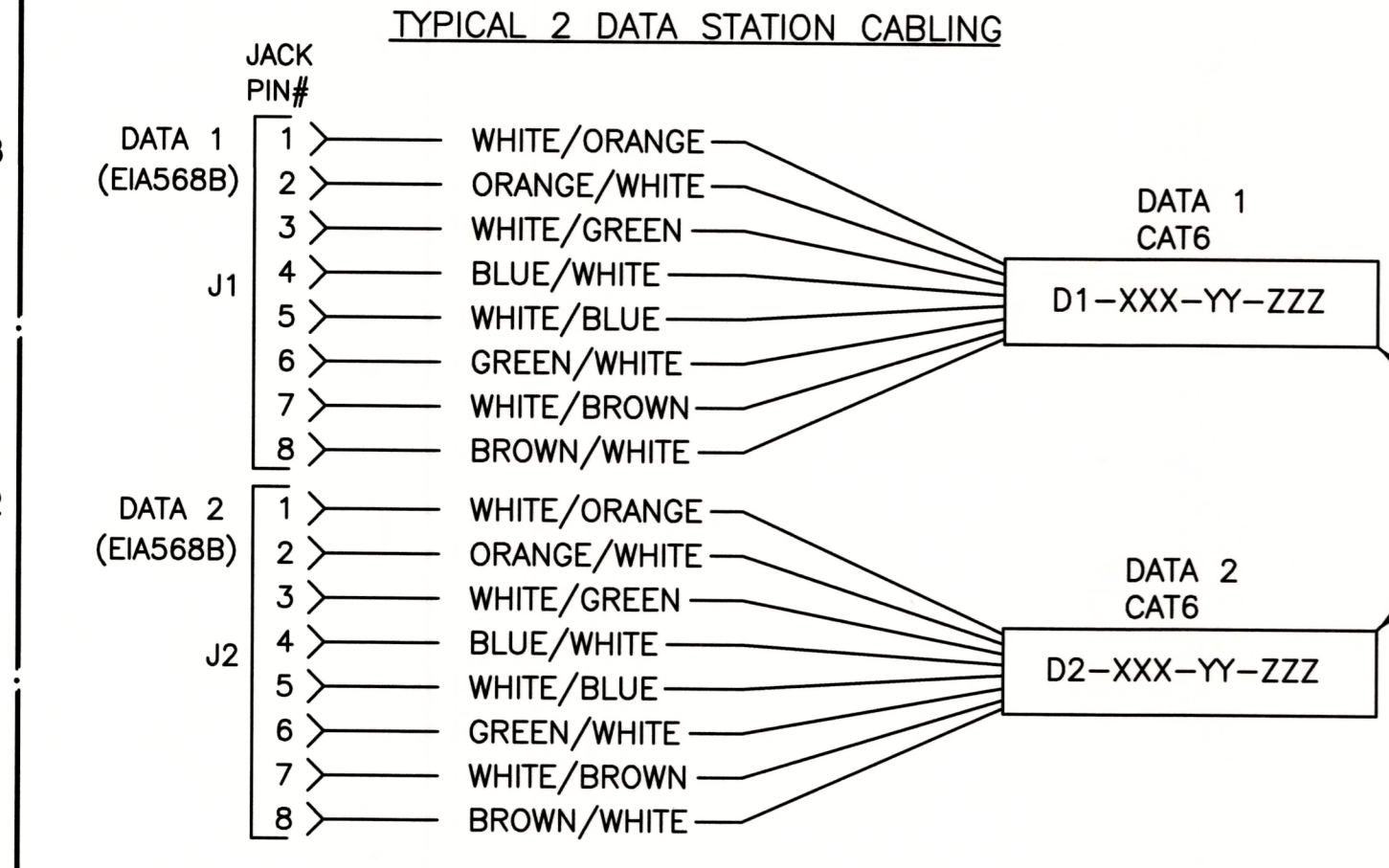
1. CONNECT TO EXISTING RECEPTACLE BRANCH CIRCUIT IN THIS AREA MADE AVAILABLE BY DEMOLITION.

GENERAL DEMOLITION NOTES:

1. THE EXTENT OF DEMOLITION IS NOT SHOWN HERE, CONTRACTOR IS RESPONSIBLE FOR DEMOLITION AS REQUIRED BY NEW WORK.
2. ALL ELECTRICAL CONDUIT, WIRING, DEVICES, FIXTURES, ETC. REQUIRED TO BE REMOVED TO ALLOW FOR NEW CONSTRUCTION, ABANDONED AS A RESULT OF NEW CONSTRUCTION, OR CURRENTLY NOT IN SERVICE SHALL BE REMOVED AS PART OF THIS CONTRACT. EXPOSED CONDUITS & CONDUITS IN ACCESSIBLE AREAS SHALL BE REMOVED COMPLETELY, CONDUITS CONCEALED IN FLOORS, WALLS & ABOVE NON-ACCESSIBLE CEILINGS MAY BE CAPPED AND ABANDONED AFTER REMOVAL OF ALL CONDUCTORS.
3. EXISTING ELECTRICAL EQUIPMENT AND CIRCUITRY NOT BEING REMOVED OR REWORKED UNDER THIS CONTRACT, BUT LOCATED SO AS TO BE AFFECTED BY THE WORK UNDER THIS CONTRACT, SHALL REMAIN IN SERVICE. SUCH CIRCUITS EQUIPMENT, ETC., SHALL BE EXTENDED, RELOCATED OR REMOVED & REINSTALLED AS REQUIRED TO ACCOMMODATE NEW CONSTRUCTION.
4. DUE TO THE DEMOLITION OF CEILINGS. CONTRACTOR SHALL RELOCATE AND/OR SUPPORT EXISTING ITEMS AT OR ABOVE CEILING THAT WILL REMAIN IN SERVICE.

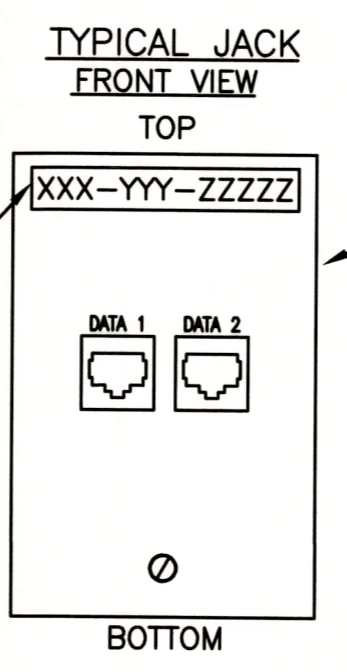
2 DATA STATION CABLE SPECIFICATIONS

MODULAR JACKS FOR DATA OUTLETS
D2 INDICATES: OUTLET FOR DATA STATION. (2) 8 PIN ASSEMBLY (CAT6/568B) WITH LABELS FOR DATA, TO BE PROVIDED AND INSTALLED BY COMMUNICATIONS CONTRACTOR.

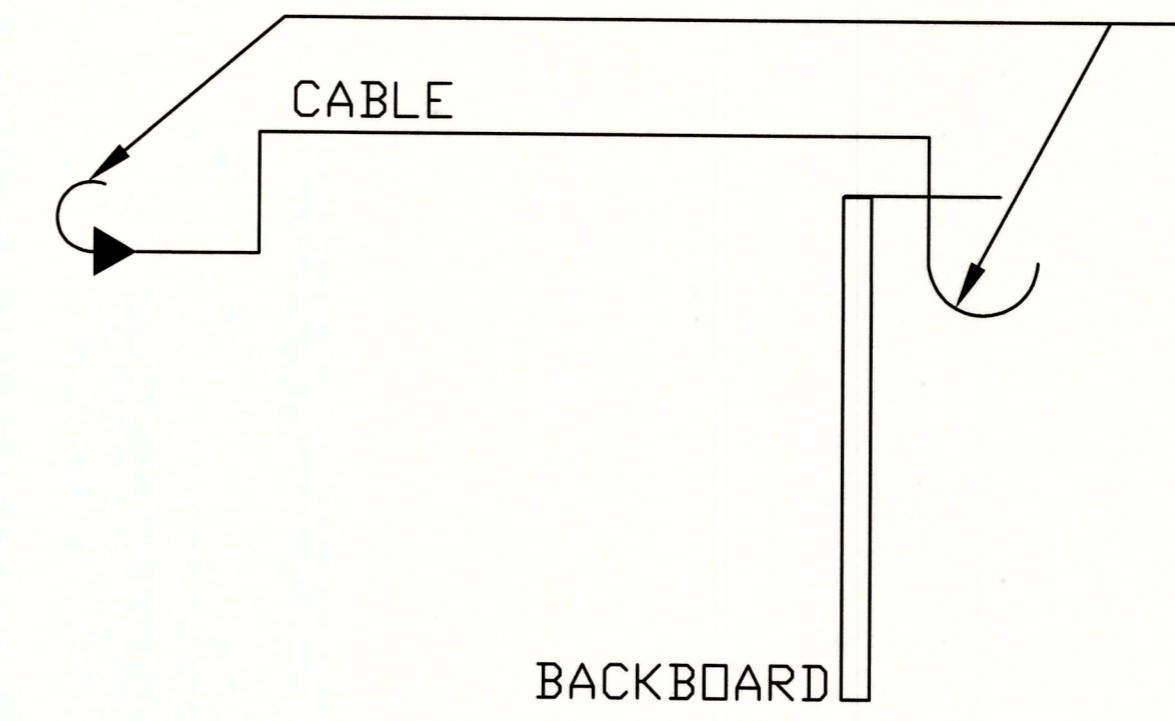


XXX=PROJECT NAME, YY=MDF/IDF ROOM, AND ZZZZZ=WIRING LIMIT, FLOOR LEVEL AND UNIQUE JACK I.D.# NOTE: EACH STATION WILL HAVE A UNIQUE #, 001,002,003 ETC. (TO BE DONE BY COMMUNICATIONS CONTRACTOR.) LABEL FACPLATE USING APPROVED SYSTEM

MARK CABLE NEATLY AT BACKBOARD END WITH PERMANENT MARKER FOR STATION IDENTIFICATION, D=DATA STATION CABLE, XXX=BLDG.#, YY=FLOOR, AND ZZZ=UNIQUE JACK# NOTE: EACH STATION WILL HAVE A UNIQUE #, 001,002,003 ETC.



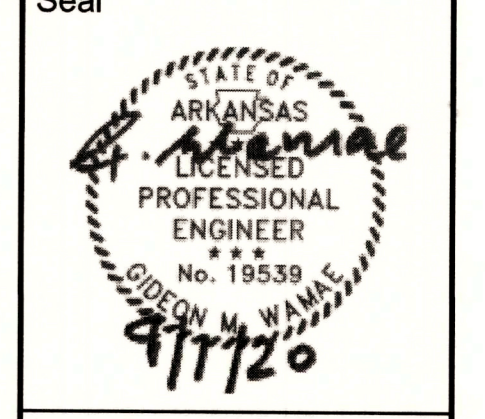
SINGLE GANG DEVICE PLATE MOUNTED ON DOUBLE GANG OUTLET BOX WITH 5/8" SINGLE GANG ADAPTER SHEET ROCK PLATE (MOUNTED VERTICALLY)



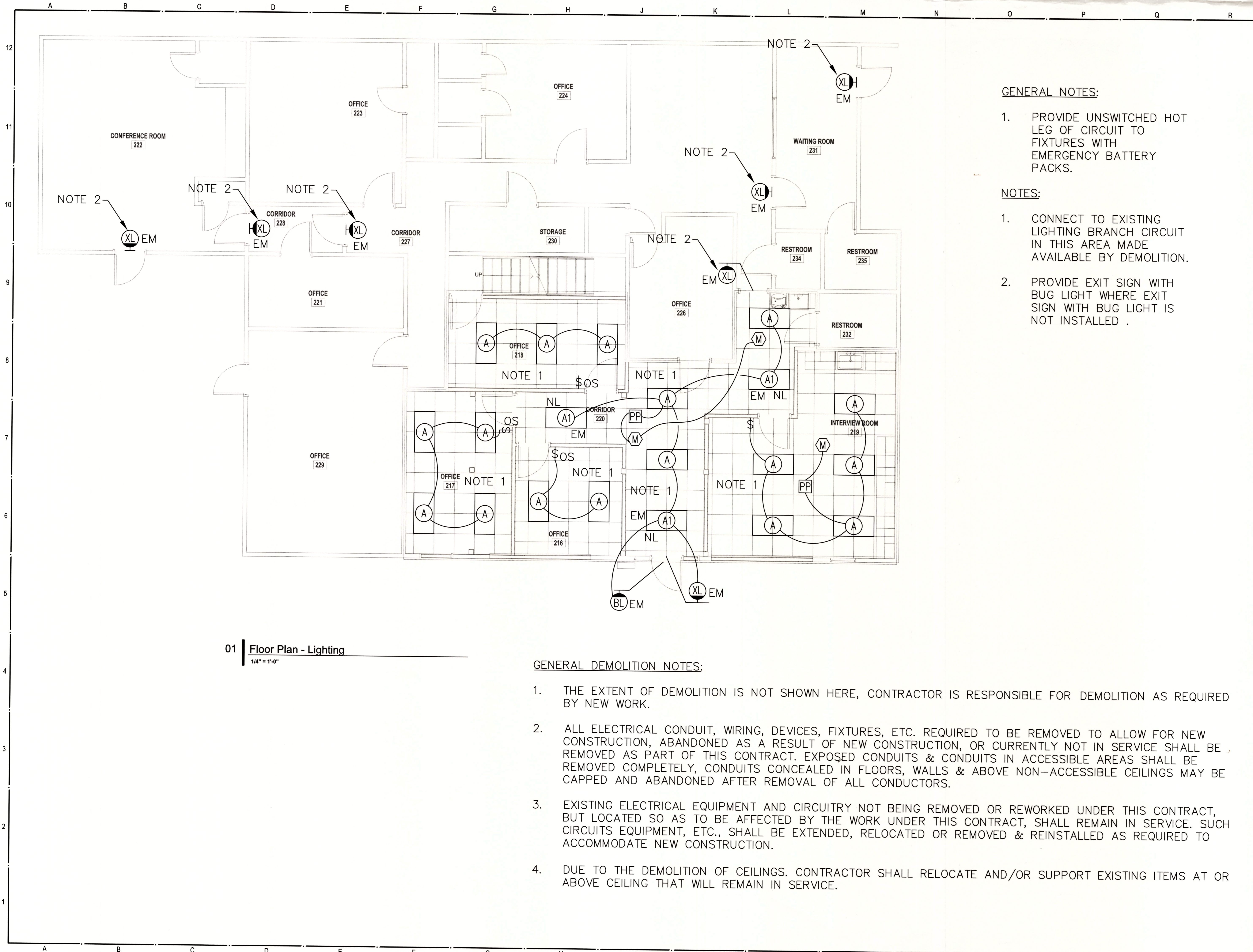
TERMINATION AT STATION OUTLET AND AT PATCH PANEL AND TESTING/CERTIFICATION BY CONTRACTOR. PROVIDE SLACK AT COMMUNICATIONS EQUIPMENT ROOM FOR EACH CABLE.

TYPICAL OUTLET CABLING
SEE PLANS FOR CONDUIT LAYOUT

Rev.	Date	Revision Description



Issue Date: 09/01/20
Project No: POINSETT.003AR
Drawn By: TH
Checked By: GW
Sheet Title:
First Floor Plan - Power



01 | Floor Plan - Lighting
1/4" = 1'-0"

GENERAL NOTES:

1. PROVIDE UNSWITCHED HOT LEG OF CIRCUIT TO FIXTURES WITH EMERGENCY BATTERY PACKS.

NOTES:

1. CONNECT TO EXISTING LIGHTING BRANCH CIRCUIT IN THIS AREA MADE AVAILABLE BY DEMOLITION.
2. PROVIDE EXIT SIGN WITH BUG LIGHT WHERE EXIT SIGN WITH BUG LIGHT IS NOT INSTALLED .

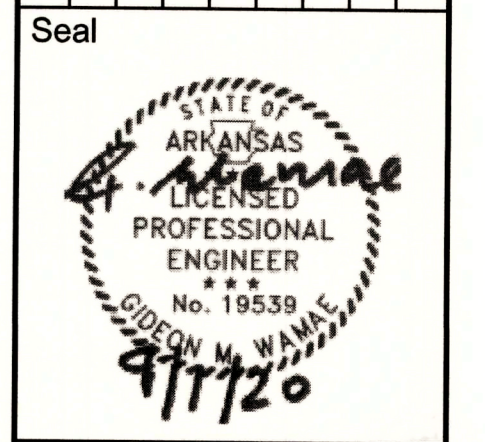
GENERAL DEMOLITION NOTES:

1. THE EXTENT OF DEMOLITION IS NOT SHOWN HERE, CONTRACTOR IS RESPONSIBLE FOR DEMOLITION AS REQUIRED BY NEW WORK.
2. ALL ELECTRICAL CONDUIT, WIRING, DEVICES, FIXTURES, ETC. REQUIRED TO BE REMOVED TO ALLOW FOR NEW CONSTRUCTION, ABANDONED AS A RESULT OF NEW CONSTRUCTION, OR CURRENTLY NOT IN SERVICE SHALL BE REMOVED AS PART OF THIS CONTRACT. EXPOSED CONDUITS & CONDUITS IN ACCESSIBLE AREAS SHALL BE REMOVED COMPLETELY, CONDUITS CONCEALED IN FLOORS, WALLS & ABOVE NON-ACCESSIBLE CEILINGS MAY BE CAPPED AND ABANDONED AFTER REMOVAL OF ALL CONDUCTORS.
3. EXISTING ELECTRICAL EQUIPMENT AND CIRCUITRY NOT BEING REMOVED OR REWORKED UNDER THIS CONTRACT, BUT LOCATED SO AS TO BE AFFECTED BY THE WORK UNDER THIS CONTRACT, SHALL REMAIN IN SERVICE. SUCH CIRCUITS EQUIPMENT, ETC., SHALL BE EXTENDED, RELOCATED OR REMOVED & REINSTALLED AS REQUIRED TO ACCOMMODATE NEW CONSTRUCTION.
4. DUE TO THE DEMOLITION OF CEILINGS. CONTRACTOR SHALL RELOCATE AND/OR SUPPORT EXISTING ITEMS AT OR ABOVE CEILING THAT WILL REMAIN IN SERVICE.

FISHER ARNOLD
ENGINEERS | ARCHITECTS | CONSULTANTS | PLANNERS
9180 Crestwyn Hills Drive | Memphis, Tennessee 38125-8538
901.748.1811 | Fax: 901.748.3115 | www.fisherarnold.com

POINSETT COUNTY HOUSING AUTHORITY
1104 ELM STREET
MARKED TREE AR 72365

Rev.	Date	Revision Description



Issue Date: 09/01/20
Project No: POINSETT.0003AR
Drawn By: TH
Checked By: GW
Sheet Title:
First Floor Plan - Lighting