



2809 Ajax Avenue Suite 100
Rogers, Arkansas 72758
Phone: 479.636.3545

O'Reilly Remodel
Harrisburg, AR. (HRB)

June 28, 2021
ADDENDUM TWO
JOB # 2021.0102

TO: All General Contractors

This Addendum is an integral part of the Contract Documents and shall be treated as such. Contractor shall acknowledge receipt of this Addendum on the Bid Form.

SCOPE: This Addendum is to revise the previously issued documents of
[Harrisburg, AR.](#) to reflect the following changes:

SCOPE

Description: This Addendum consists of Drawing Sheets [E1.0](#), & [E2.0](#), & [E3.0](#) all dated [June 28, 2021](#).

This description is for information only and does not supersede vendor responsibility to verify drawing information.

ELECTRICAL

E1-0

LIGHTING PLAN

- Item 1: Removed 1 motion detector.
- Item 2: Changes fixture size for 4' to 8' on 2 rows of lights.
- Item 3: Added new C3 type fixture to schedule.

E2-0

POWER PLAN

- Item 1: Added dim. For receptacle for BATTER/STARTER/ALTERNATOR test station.
- Item 2: Added keynote #5
- Item 3: Added circuit for pole sign.

E3-0

ELECTRICAL SCHEDULES

- Item 1: Added circuit for pole sign to panel schedule and LCP.

LIGHTING FIXTURE SCHEDULE										
MARK	MFR.	CATALOG NUMBER	VOLTAGE	FINISH	MOUNTING	LAMP	WATTAGE	ACCESSORIES	NOTES	QTY
(none)										
A	LSI	SDL8 LED 80L FL UNV DIM1 40 80CRI OR - NO SUBSTITUTIONS	UNIV	WHITE	SURFACE (CEILING)	LED	61	GRID HANGERS	8'-0" LED STRIP W/ 0-10V DIMMING DRIVER. PROVIDE 2 GRID HANGERS (648480) PER FIXTURE.	53
AE	LSI	SDL8 LED 80L FL UNV DIM1 40 80CRI EM10 OR - NO SUBSTITUTIONS	UNIV	WHITE	SURFACE (CEILING)	LED	61	GRID HANGERS	8'-0" LED STRIP W/ 0-10V DIMMING DRIVER. 10W EM BATTERY PACK (EM10). PROVIDE UNSWITCHED POWER SOURCE TO EACH FIXTURE (REFER 1-E1) . PROVIDE 2 GRID HANGERS (648480) PER FIXTURE.	4
B	LSI	SDL4 LED 40L FL UNV DIM1 40 80CRI OR - NO SUBSTITUTIONS	UNIV	WHITE	SURFACE (CEILING)	LED	30	GRID HANGER	4'-0" LED STRIP W/ 0-10V DIMMING DRIVER. PROVIDE 2 CEILING GRID HANGERS (648480) PER FIXTURE.	11
C	LSI	SDL8 LED 80L FL UNV DIM1 40 80CRI OR - NO SUBSTITUTIONS	UNIV	WHITE	SUSPENDED	LED	62	5' CHAIN KIT	8'-0" LED STRIP W/ 0-10V DIMMING DRIVER. PROVIDE (1) 5' CHAIN HANGING KIT PER FIXTURE. SUSPEND AT 12'-0" AFF UNO WITH CHAIN KIT. EC TO VERIFY LENGTH OF CHAIN REQUIRED.	45
CE	LSI	SDL8 LED 80L FL UNV DIM1 40 80CRI EM10 OR - NO SUBSTITUTIONS	UNIV	WHITE	SUSPENDED	LED	62	5' CHAIN KIT	8'-0" LED STRIP W/ 0-10V DIMMING DRIVER AND 10W EM BATTERY PACK (EM10). PROVIDE UNSWITCHED POWER SOURCE TO EACH FIXTURE (REFER 1-E1) PROVIDE 5' CHAIN HANGING KIT PER FIXTURE. SUSPEND AT 12'-0" AFF UNO WITH CHAIN KIT. EC TO VERIFY LENGTH OF CHAIN REQUIRED.	4
D	LSI	SDL4 LED 40L FL UNV DIM1 40 80CRI OR - NO SUBSTITUTIONS		WHITE	SUSPENDED	LED	30	5' CHAIN KIT	4'-0" LED STRIP W/ 0-10V DIMMING DRIVER. PROVIDE (1) 5' CHAIN HANGING KIT PER FIXTURE. SUSPEND AT 12'-0" AFF UNO WITH CHAIN KIT. EC TO VERIFY LENGTH OF CHAIN REQUIRED.	8
NL	LSI	SDL8 LED 80L FL UNV DIM1 40 80CRI EM10 OR - NO SUBSTITUTIONS	UNIV	WHITE	SURFACE (CEILING)	LED	62	GRID/CHAIN	8'-0" LED STRIP W/ 0-10V DIMMING DRIVER AND 10W EM BATTERY PACK (EM10). PROVIDE UNSWITCHED POWER SOURCE TO EACH FIXTURE (REFER 1-E1) PROVIDE 2 CEILING GRID HANGERS (648480) PER FIXTURE AS APPLICABLE. REMOTE DUAL LED HEAD EXTERIOR EMERGENCY LIGHT. POWERED FROM XR.	7
RH2	COOPER	APWR2	120-277V			LED	3.6		4'-0" ENCLOSED AND GASKETED LED STRIP WITH 360" INTEGRAL MOTION SENSOR WITH ON/OFF OPERATION. WALL PACK	3
S	LITHONIA	CVST L48 4000LM MVOLT 40K 80CRI		WHITE	SURFACE	LED	34		COMBINATION LED EXIT SIGN AND LIGHT WITH UNIVERSAL MOUNTING OF ILLUMINATION PER NEC 700.12(A). IF CEILING HEIGHT IS 11'-7" OR LOWER, CEILING MOUNT. IF SEILING IS HIGHER THAN 11'-7" WALL MOUNT.	5
W	LSI	XWM-2-LED-6L-40	UNIV		SURFACE	LED	44	--		4
XR	COOPER	APCH7R (RED LETTERS)	UNIV	WHITE	SURFACE	LED	2	--		10

ALL ITEMS LISTED ON THE "LIGHT FIXTURE SCHEDULE" WILL BE SUPPLIED BY THE OWNER (O'REILLY). ITEMS SHALL BE DIRECT ORDERED AND OR RELEASED FROM THE LISTED ELECTRICAL EQUIPMENT DISTRIBUTOR.

GRAYBAR ELECTRIC CO. INC.
118855 LACKLAND ROAD
ST. LOUIS, MO 63146

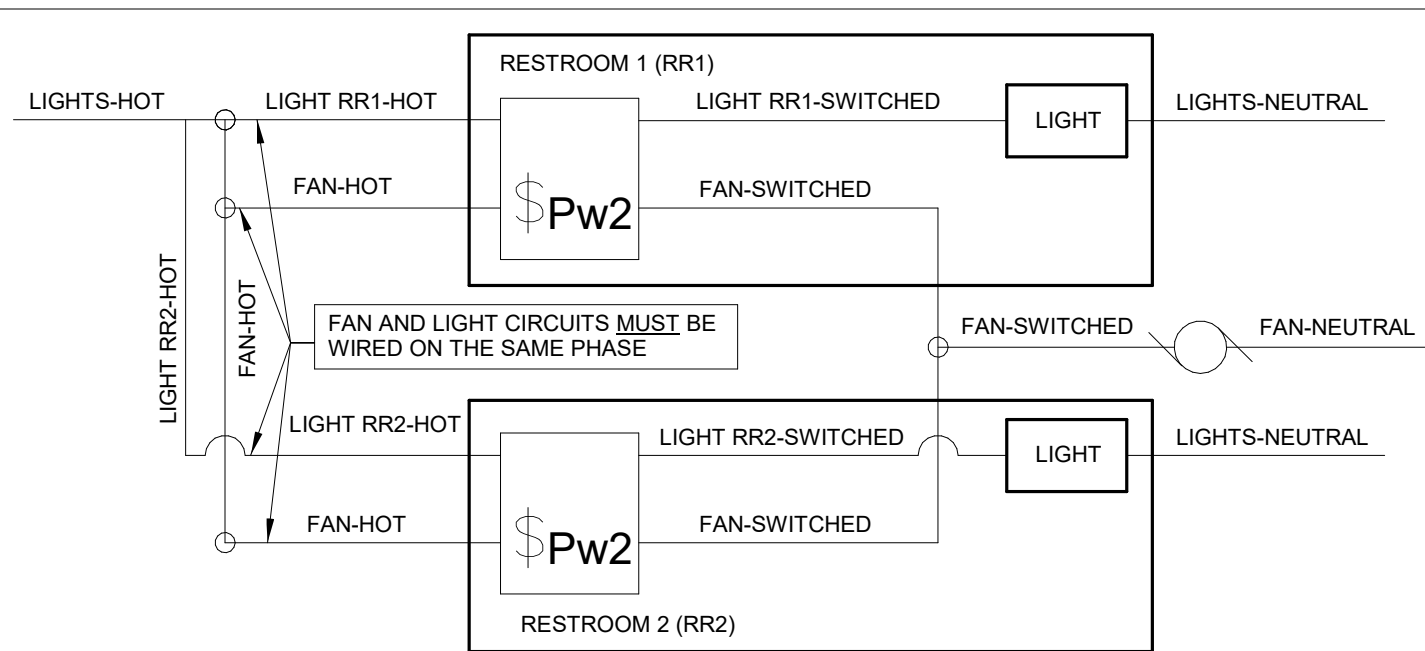
CONDUIT REQUIREMENTS

- ALL WIRING SHALL BE IN CONDUIT, EXCEPT THAT MC-CABLE MAY BE SUBSTITUTED ONLY AS FOLLOWS:
- MC-CABLE (MAXIMUM CABLE LENGTH OF 10'-0") MAY BE INSTALLED ONLY FOR BRANCH CIRCUIT WIRING TO LIGHT FIXTURES.
 - "MC-CABLE (MAXIMUM CABLE LENGTHS SHOWN ON DETAIL 2/E2.0) MAY BE INSTALLED ONLY ABOVE SLAB AND ONLY AT LOCATIONS INDICATED ON E2.0 SHEET."
- SEE SHEET E4.0 FOR MORE REQUIREMENTS

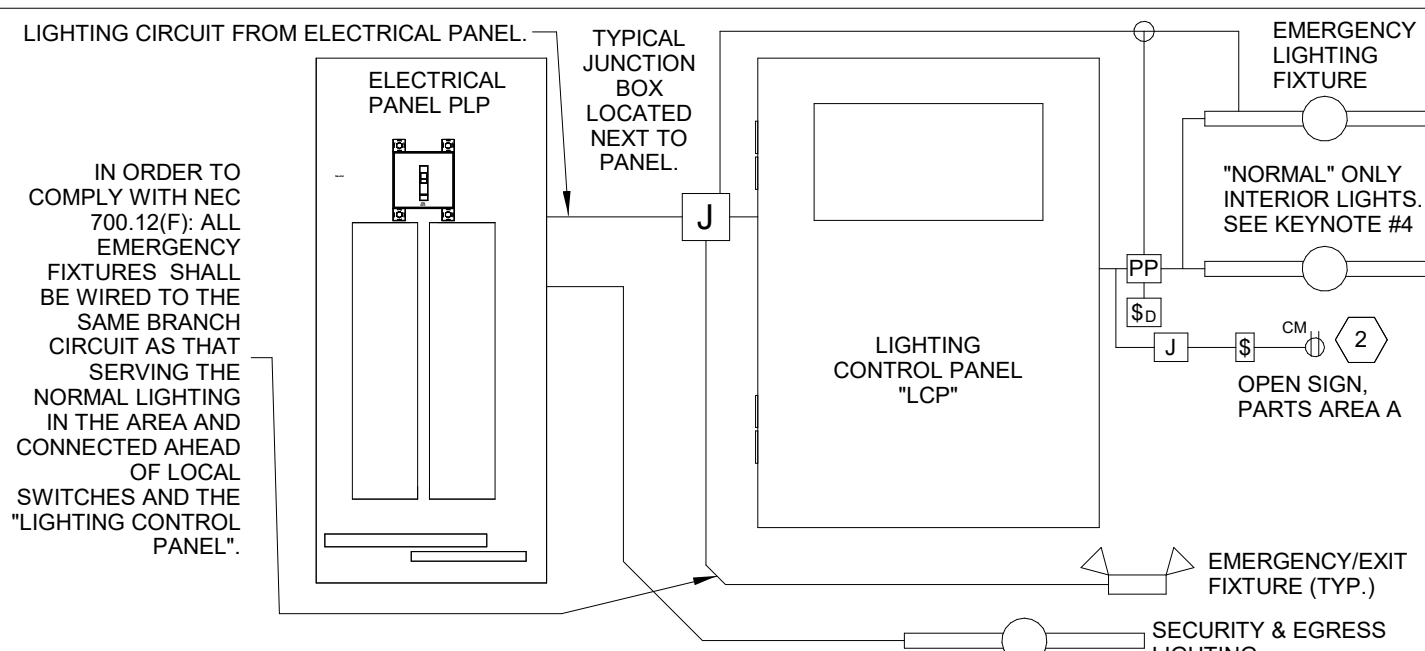
EXIT SIGNS

REFER TO NOTES IN "LIGHT FIXTURE SCHEDULE" FOR MINIMUM MOUNTING HEIGHT FOR EXIT SIGNS (FIXTURE "XR"). ALL EXIT SIGNS MUST BE CLEARLY VISIBLE, NOT OBSCURED BY SHELVEING AND/OR MERCHANDISE AND COORDINATED WITH INTERIOR PAINT SCHEME. CONFIRM SHELVEING HEIGHT(S) AND PAINT SCHEME WITH O'REILLY REPRESENTATIVE PRIOR TO INSTALLATION.

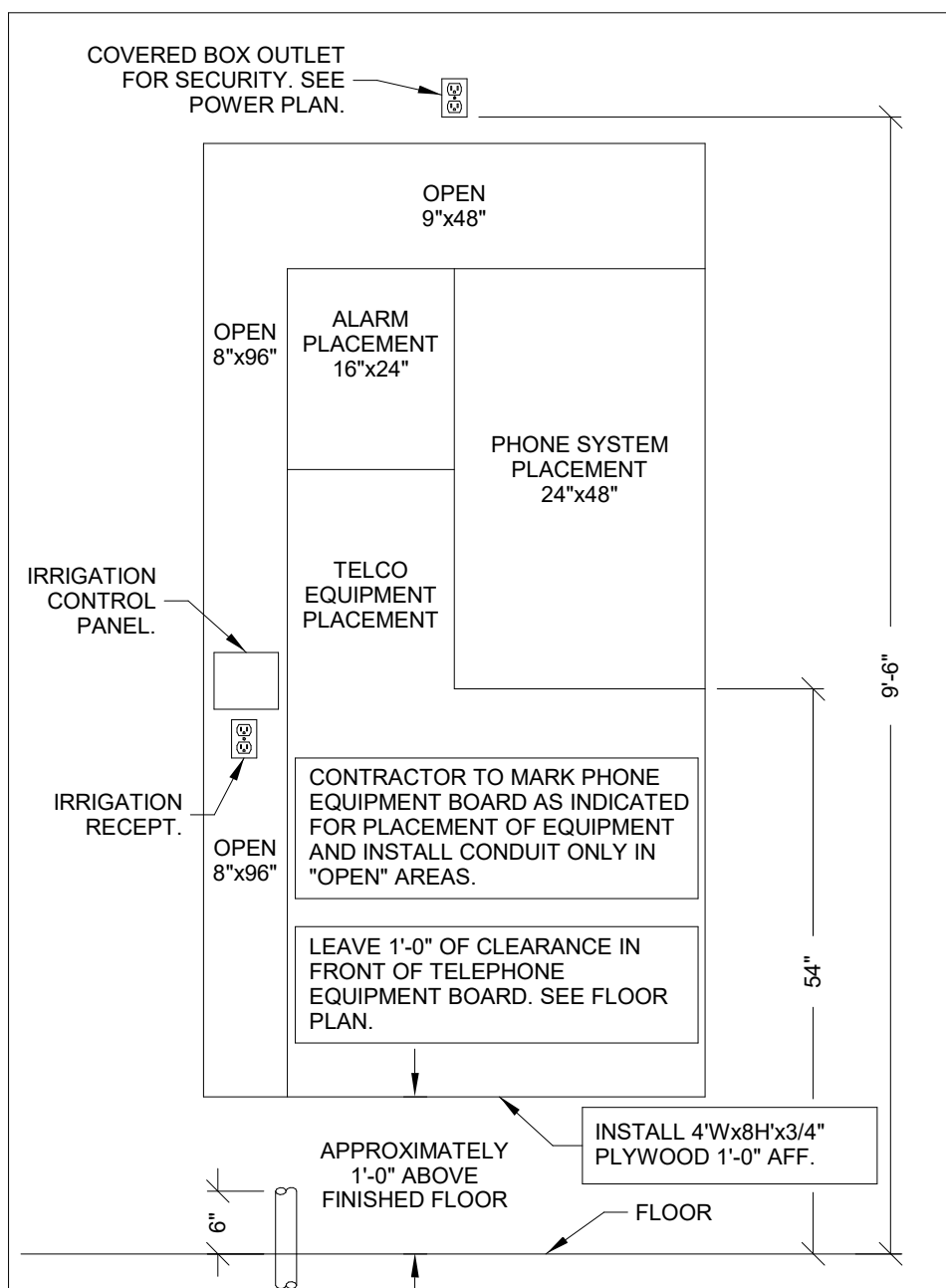
THE MAXIMUM HEIGHT FOR AN EXIT LIGHT ASSOCIATED WITH A SPECIFIC OPENING (I.E. MOUNTED OVER A DOOR OR OPENING) SHALL BE NO GREATER THAN THE CODE ALLOWED 6'-8" ABOVE THE TOP EDGE OF THE DOOR OR OPENING.



RESTROOM EXHAUST FAN WIRING DIAGRAM
2
E1.0
N.T.S



EMERGENCY/EXIT LIGHTING CONNECTION DIAGRAM
1
E1.0
N.T.S



TELEPHONE EQUIPMENT BOARD
3
E1.0
N.T.S

AUTOMATIC LIGHTING CONTROL

COMPLIANCE WITH ENERGY CODE IS ACHIEVED BY:

- ONCE THE EMS HAS BEEN PROGRAMMED, THE INTERIOR AND EXTERIOR LIGHTS WILL TURN ON AND OFF USING THE FOLLOWING LOGIC: SEE EM SHEETS.

INTERIOR WORK LIGHTING WILL TURN ON WITH FIRST MOTION IN THE STORE AND WILL TURN OFF 15 MINUTES AFTER LAST MOTION ONCE THE STORE IS CLOSED.

INTERIOR SALES LIGHTS WILL TURN ON AT STORE OPENING AND TURN OFF 15 MINUTES AFTER STORE CLOSING.

EXTERIOR SIGN LIGHTS WILL TURN ON WHEN ITS DARK ENOUGH OUTSIDE ANYTIME DURING STORE HOURS, AND WILL TURN OFF AT STORE CLOSING.

EXTERIOR SITE LIGHTS WILL TURN ON WHEN IT IS DARK ENOUGH OUTSIDE AND IT IS WITHIN STORE HOURS OR THERE IS MOTION IN THE STORE. THEY WILL TURN OFF 30 MINUTES AFTER LAST MOTION ONCE THE STORE IS CLOSED.

FOR NEW CONSTRUCTION LOCATIONS ONLY, THERE IS A TEMPORARY PROGRAM TO KEEP SIGN AND SITE LIGHTS ON UNTIL MIDNIGHT RATHER THAN THE TIMES INDICATED ABOVE. O'REILLY WILL DISABLE THIS PROGRAM ONE YEAR AFTER STORE OPENING.
- RESTROOMS AND OFFICES: ALL LIGHTING IN THESE AREAS ARE CONTROLLED BY OCCUPANT-SENSING DEVICES.

INTERIOR LIGHTING ZONES

ALL INTERIOR LIGHTING WITHIN PARTS AREA "A" SHALL BE CONSIDERED "SALES" ZONE (ON ONLY WHEN STORE IS OPEN FOR BUSINESS).

ALL INTERIOR LIGHTING WITH PARTS AREA "B", PARTS AREA "C", RESTROOMS, OFFICE, AND BREAK AREA SHALL BE CONSIDERED "WORK" ZONES (ON WHENEVER THERE IS MOTION OR THE STORE IS OPEN).

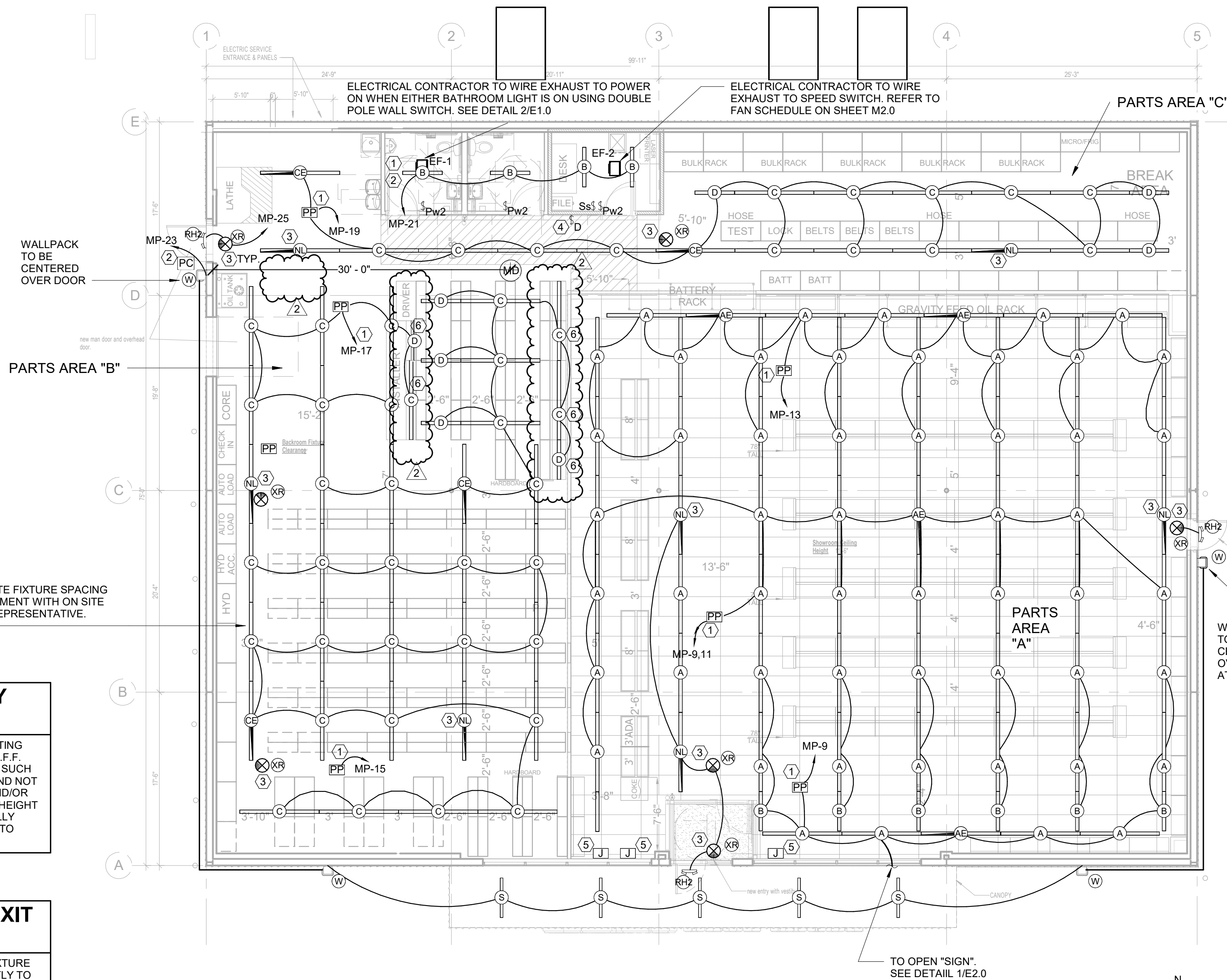
SEISMIC RESTRAINTS (ONLY REQUIRED FOR SEISMIC DESIGN CATEGORIES C,D,E,F)

CONTRACTOR TO REFER TO ARCHITECTURAL SHEET G1.1 FOR SEISMIC DESIGN CATEGORY.

IF REQUIRED SEE SEISMIC DETAILS SHEET ME1.

LIGHTING - KEYNOTES

- ROUTE CIRCUIT THROUGH "E" PANEL TRANSFER SWITCH. SEE "E" PANEL TRANSFER SWITCH SCHEDULE ON SHEET E3.0
- VIA LIGHTING CONTROL PANEL. SEE EM SHEET
- ALL EXIT AND NIGHT LIGHTS TO BE ON CIRCUIT MP-25.
- DIMMER LIGHTING CONTROL SWITCHES LOCATED ON OUTSIDE WALL OF OFFICE. SEE LIGHTING PLAN FOR QUANTITY. SEE DETAILS ON SHEET E4.0 FOR MORE INFORMATION.
- MOUNT J-BOX INSIDE BUILDING AND FLEX CONDUIT THRU WALL FOR POWER SUPPLY TO ILLUMINATED SIGN. EXACT LOCATION OF PENETRATIONS SHALL BE COORDINATED WITH SIGN COMPANY. PENETRATIONS SHALL BE BEHIND SIGNAGE. WATERPROOF WITH ELASTOMERIC POLYURETHANE (NO EXCEPTIONS) EQUAL TO "VULKEM" 116. WIRE TO SIGN WITH 15' OF WIRING "WHIP" (SHALL BE FLEX OR TYPE MC CABLE). COIL AND "CABLE TIE" WIRING "WHIP" TO WALL ABOVE CEILING. TYPICAL.
- SUSPEND 8'-0" A.F.F. THIS FIXTURE ONLY.



EMERGENCY LIGHTING

INSTALL EMERGENCY LIGHTING FIXTURES MINIMUM 12'-8" A.F.F. FIXTURE SHALL BE LOCATED SUCH THAT IT IS CLEARLY VISIBLE AND NOT OBSCURED BY SHELVEING AND/OR MERCHANDISE. FIELD VERIFY HEIGHT OF SHELVEING WITH O'REILLY REPRESENTATIVE PRIOR TO INSTALLATION.

EMERGENCY/EXIT CIRCUITING

ROUTE EMERGENCY/EXIT FIXTURE PORTION OF CIRCUIT DIRECTLY TO CIRCUIT BREAKER. FIXTURE SHALL NOT BE SWITCHED BY LIGHTING CONTROL SYSTEM. SEE DETAIL 1/E1.0. TYPICAL. SEE N.E.C. 700.12(F).



pb2
architecture
+engineering

2809 Ajax Avenue Suite 100
Rogers Arkansas 72758
Phone: 479.636.3545
Fax: 479.636.1209

Engineer of Record
Keith Allen Williams, P.E.
Arkansas License No.12409
Firm Certificate No. 885

PROJECT:
RE-MODEL O'REILLY AUTO PARTS STORE
1101 N. ILLINOIS ST
HARRISBURG, AR 72432

LIGHTING PLAN

O'Reilly
AUTO PARTS

CORPORATE OFFICES:
233 SOUTH PATTERSON
SPRINGFIELD, MISSOURI
(417) 862-2674 TELEPHONE

DRAWN BY: MF
CHECKED BY: TJ

DATE:
04/26/2021

REVISION:
2 ADDENDUM 2
06-28-2021

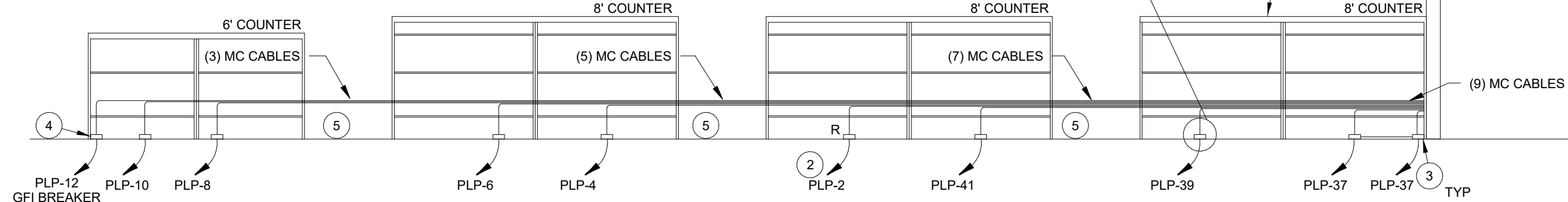
PROJECT NUMBER:
2021.0102

SHEET NUMBER:

E1.0

1. PROVIDE HUBBELL POWER POLE FOR PHONE & DATA WIRING BY OWNER.
2. ROUTE CIRCUIT THROUGH "E" PANEL TRANSFER SWITCH. SEE "E" PANEL TRANSFER SWITCH SCHEDULE ON SHEETS E3.
3. FLOOR 4-PLEX ISOLATED GROUND RECEPTACLE. SEE DETAIL 4/E2.
4. FLOOR DUPLEX RECEPTACLE (FOR COKE MACHINE) SEE DETAIL 4/E2 SIMILAR.
5. INSTALL "ADAM HALL DEFENDER COMPACT PROTECTOR 85100" RACEWAY ON FLOOR BETWEEN COUNTERS. TYPICAL. CUT TO LENGTH AS REQUIRED.

EACH BOX SHALL BE SECURELY ANCHORED WITH A MINIMUM OF (2) 3/16" x 1-1/2" "TAPCON" CONCRETE SCREWS.



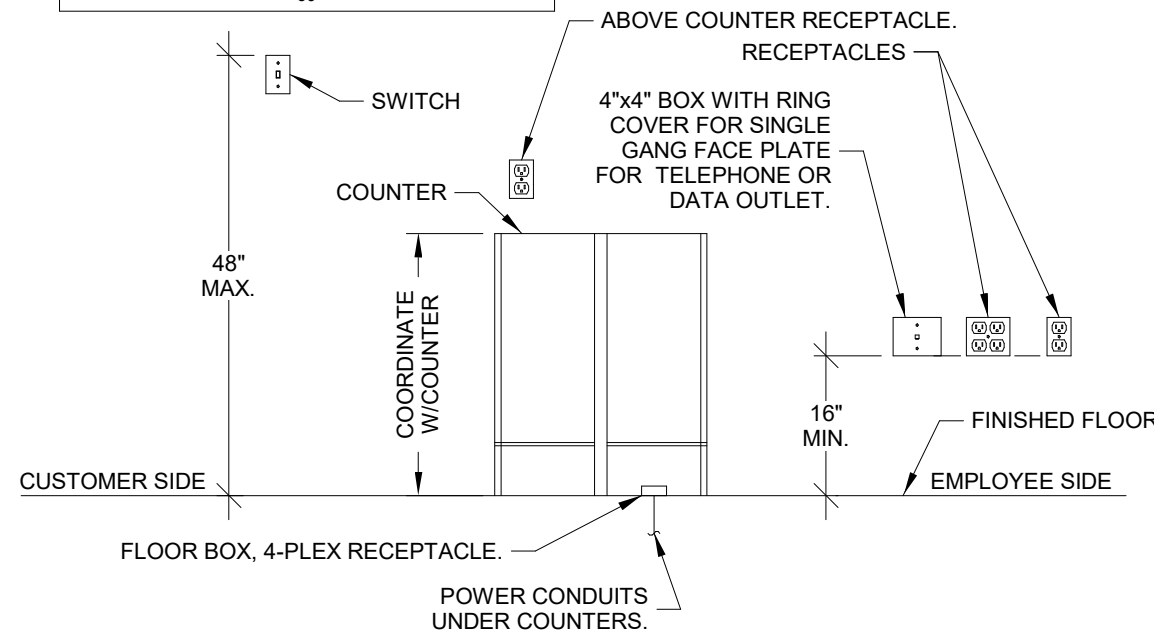
1 FLOOR MOUNTED RECEPTACLES UNDER COUNTERS

E2.0

N.T.S

VISUAL REFERENCE ONLY

NOTE: THE ILLUSTRATED MOUNTING HEIGHTS ARE TYPICAL. SPECIAL HEIGHTS ARE NOTED ON PLAN (@ 60").

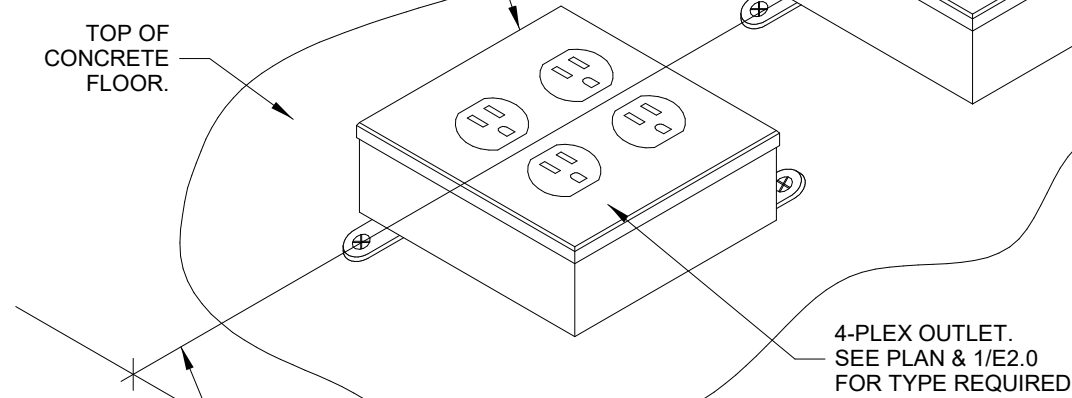


3 TYPICAL OUTLET MOUNTING HEIGHTS

E2.0

N.T.S

DOUBLE GANG/DUPLEX RECEPTACLE, DIE CAST ALUMINUM, WEATHERPROOF, SURFACE MOUNTED BOX (HUBBELL RACO # 5345-0/#5324-0 OR EQUIVALENT) WITH OUTLETS. PROVIDE WITH STAINLESS STEEL FACE PLATE (SS82 AND SS8).



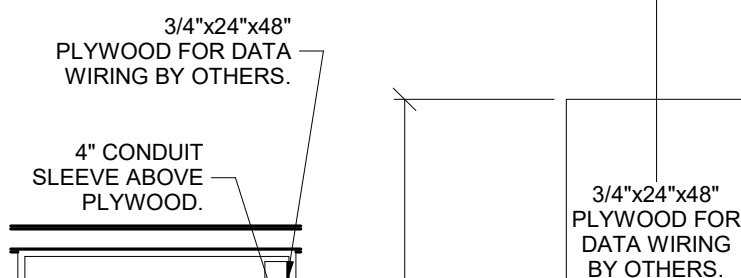
4 SURFACE MOUNTED FLOORBOX

E2.0

N.T.S

BUSHING, TYPICAL. MALE ADAPTOR, TYPICAL. PIPE STRAP CONDUITS TO CEILING JOISTS, TYPICAL. 4" CONDUIT SLEEVE ABOVE RACK.

CEILING STRUCTURE IN OFFICE.



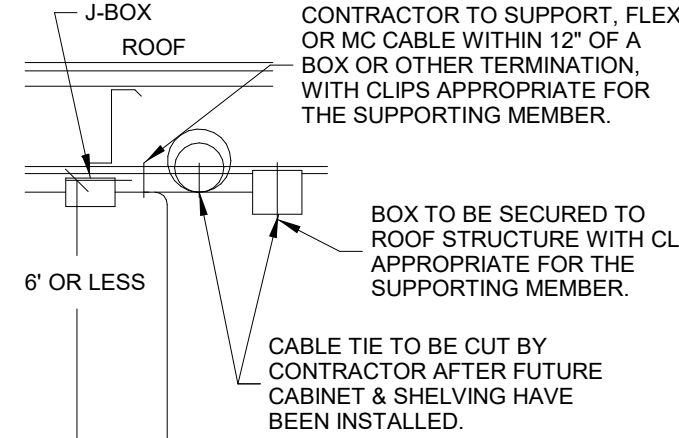
NOTE: SEE POWER PLAN FOR OFFICE CONFIGURATION.

6 CONDUITS IN OFFICE

E2.0

N.T.S

WIRE TO INDICATED DEVICES WITH 20' OF WIRING "WHIP" (SHALL BE FLEX OR TYPE MC CABLE). COIL AND "CABLE TIE" WIRING "WHIP" TO PURLINS AT ROOF STRUCTURE. (FOR FUTURE DROP BY CONTRACTOR DOWN TO INDICATED EQUIPMENT.) WHERE A LOCATION HAS MULTIPLE DEVICES, LOCATE ALL DEVICES NEXT TO EACH OTHER AT ROOF STRUCTURE.



CONTRACTOR TO SECURELY STRAP FLEX OR MC CABLE AND SECURELY CLIP BOX TO SHELVING AND CABINET AS REQUIRED.

FUTURE DROP BY CONTRACTOR.

FUTURE CABINET/SHELVING BY OWNER.

FLOOR

CONTRACTOR TO SUPPORT FLEX OR MC CABLE AT INTERVALS NOT TO EXCEED 6' WITH CABLE TIES.

CONTRACTOR TO MOUNT WHERE INDICATED BY O'REILLY STORE. INSTALL SUPERVISOR (OSI), DURING FIXTURING/MERCHANDISING. LEAVE WHIP COILED UP AND TIED TO PURLIN UNTIL OSI IS ON SITE TO DETERMINE MOUNTING LOCATION.

2 WIRING WHIP FROM CEILING

E2.0

N.T.S

TELEPHONE & COMPUTER DATA SYSTEMS:

- A. ELECTRICAL CONTRACTOR SHALL PROVIDE AND INSTALL ALL TELEPHONE AND DATA CONDUITS.
- B. ELECTRICAL CONTRACTOR SHALL VACUUM OUT ALL CONDUITS TO REMOVE WATER.
- C. ELECTRICAL CONTRACTOR SHALL PROVIDE PULL-STRING IN EACH CONDUIT.
- D. OWNER SHALL PROVIDE AND INSTALL ALL TELEPHONE AND DATA WIRING

CONDUIT REQUIREMENTS

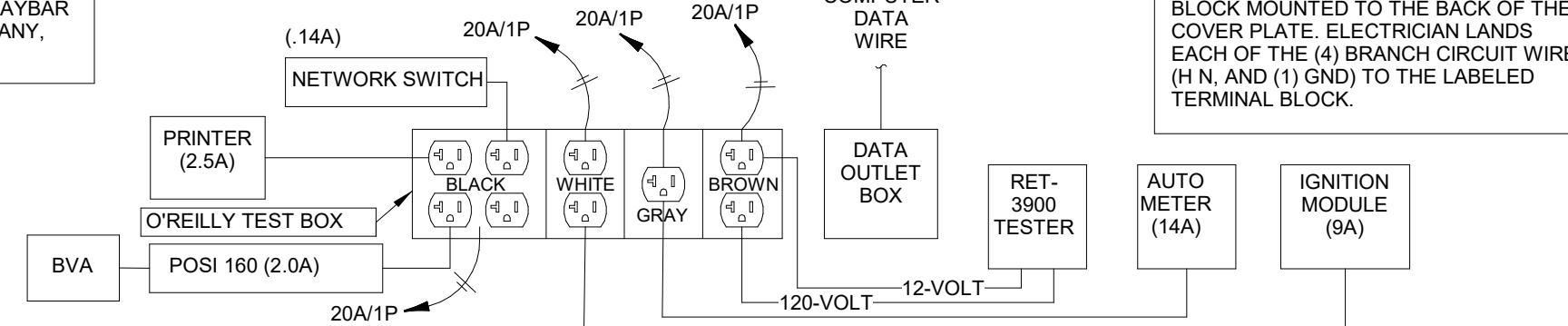
- ALL WIRING SHALL BE IN CONDUIT, EXCEPT THAT MC-CABLE MAY BE SUBSTITUTED ONLY AS FOLLOWS:
- A. MC-CABLE (MAXIMUM CABLE LENGTH OF 10'-0") MAY BE INSTALLED ONLY FOR BRANCH CIRCUIT WIRING TO LIGHT FIXTURES.
 - B. MC-CABLE (MAXIMUM CABLE LENGTHS SHOWN ON DETAIL 2/E2.0) MAY BE INSTALLED ONLY ABOVE SLAB AND ONLY AT LOCATIONS INDICATED ON E2.0 SHEET." SEE SHEET E4.0 FOR MORE REQUIREMENTS

MARKING OF ELECTRICAL WORKING SPACE

IN FRONT OF ALL METER PANELS, SUB PANELS, TRANSFORMERS, AND DISCONNECTS, PROVIDE A WORKING SPACE IN FRONT, ON THE FLOOR. RECTANGLE, PAINT WITH CONTRASTING COLOR, 4-INCH BRUSH STROKES WITH DIAGONAL LINES INSIDE, WITH 6-INCH LETTERS, "NO STORAGE" BLOCKED IN, AND/OR LARGE STICKER SAYING THE SAME THING, 4'-0" DEPTH TYPICAL AT ALL LOCATIONS.

NOTE: ALL PANELBOARDS, TRANSFORMERS, TRANSFER SWITCH KIT AND DISCONNECTS WILL BE SUPPLIED BY THE OWNER (O'REILLY). ELECTRICAL GEAR SHALL BE DIRECT ORDERED AND/OR RELEASED FROM THE LISTED ELECTRICAL EQUIPMENT DISTRIBUTOR LISTED ON SHEET E3.0.

O'REILLY TEST BOX SUPPLIED BY GRAYBAR ELECTRIC COMPANY, (314) 573-2082.



5 PLUG-IN SEQUENCE FOR "TEST BENCH" EQUIPMENT

E2.0

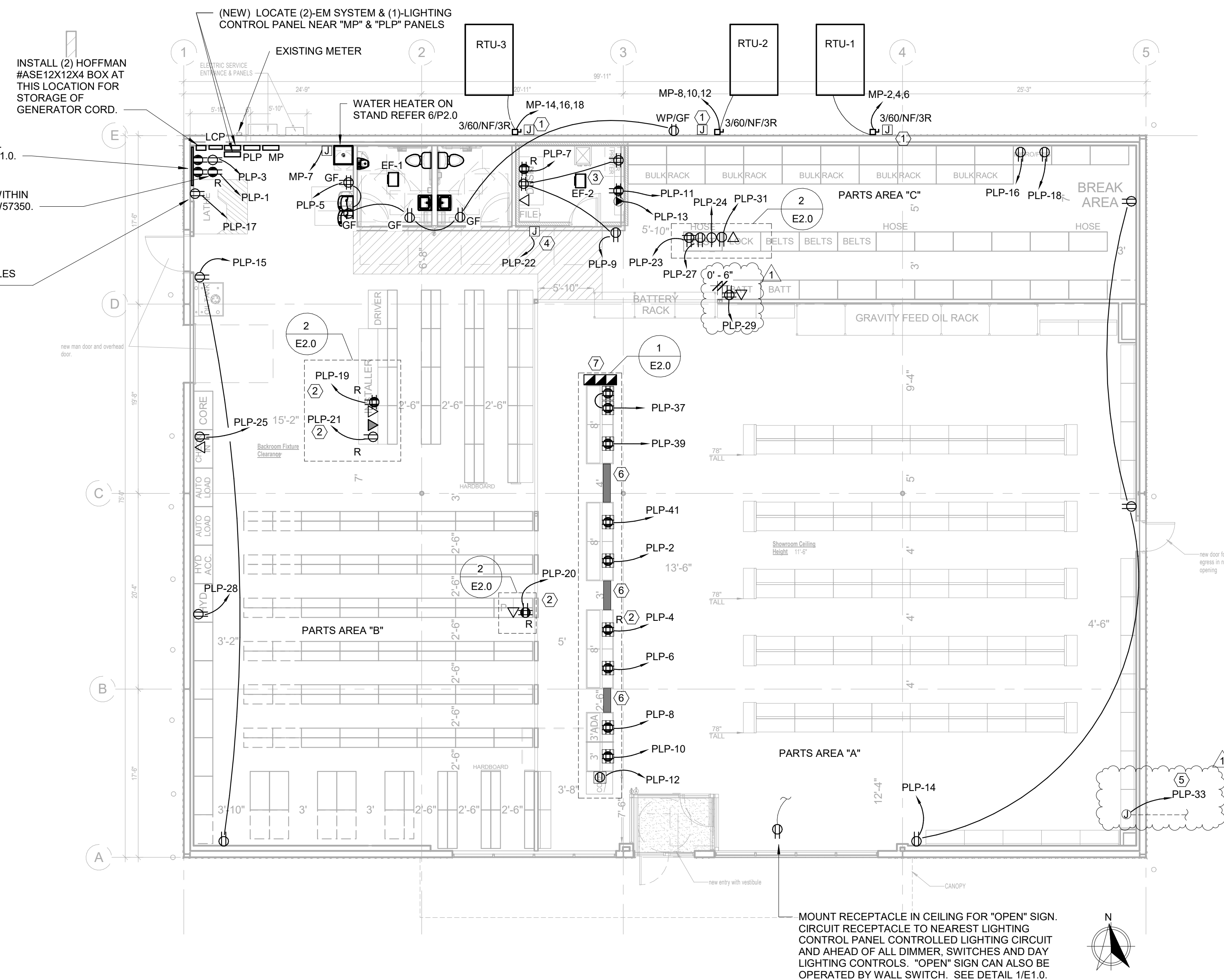
N.T.S

POWER KEYNOTES

1. CONTRACTOR TO INSTALL J-BOX, CONDUIT, AND PULL STRING FOR FIRE ALARM. MOUNT J-BOX BELOW OPTIONAL CONVENIENCE OUTLET LOCATION. REFERENCE SHEET M2.0
2. ROUTE CIRCUIT THROUGH "E" PANEL TRANSFER SWITCH. SEE "E" PANEL TRANSFER SWITCH SCHEDULE ON SHEET E3.0
3. FLOOR 4-PLEX ISOLATED GROUND RECEPTACLE. SEE DETAIL 4/E2.0
4. J-BOX/CIRCUIT FOR FIRE ALARM SYSTEM INSTALLED IF, AND ONLY IF, FIRE ALARM SYSTEM IS REQUIRED. CONTRACTOR SHALL CONFIRM THAT SYSTEM IS REQUIRED PRIOR TO ROUGH-IN. THE BREAKER SHALL BE PAINTED RED AND LOCKABLE.
5. PROVIDE POWER TO POLE SIGN. TO BE CONTROLLED THROUGH LIGHTING CONTROL PANEL. COORDINATE WITH CIVIL PLANS FOR EXACT LOCATION OF SIGN.
6. INSTALL "ADAMS HALL DEFENDER COMPACT PROTECTOR 85100" RACEWAY ON FLOOR BETWEEN COUNTERS. TYPICAL.
7. HUBBELL POWER POLE.

FIRE ALARM NOTE:

IN THE EVENT A MONITORED FIRE ALARM SYSTEM IS REQUIRED BY THE AUTHORITY HAVING JURISDICTION, THE ALARM SYSTEM WILL BE CONTRACTED DIRECTLY BY THE ALARM SERVICES MANAGER, LEIGH SIDES, WITH THE O'REILLY AUTOMOTIVE CORPORATE OFFICE. THE GENERAL CONTRACTOR SHALL NOT PROCURE ANYONE TO INSTALL OR QUOTE THESE SYSTEMS UNLESS THEY HAVE BEEN ASKED TO DO SO BY LEIGH SIDES. PLEASE CONTACT LEIGH SIDES AT (417) 829-5712 IF A SYSTEM IS NEEDED OR IF THERE ARE ANY QUESTIONS.



PANELBOARD: MP																									IG BUS GROUND BUS FEED THRU LUGS				
BUS AMPS: 400 A MAIN SIZE/TYPE: MLO VOLTS/PHASE: 120/208 Wye,3PH,4W SERVES: GENERAL LOCATION: PARTS AREA "C" 105 MOUNTING: SURFACE																													
Load Name		NOTE	WIRE	BKR AMP	PL	A		B		C		PL	BKR AMP	WIRE	NOTE	Load Name													
1	SPARE	--	--	20 A	1	0	4,920					3	50 A	8	--	RTU-1	2												
3	SPARE	--	--	20 A	1			0	4,920			--	--	--	--		4												
5	SPARE	--	--	20 A	1					0	4,920	--	--	--	--		6												
7	W.H.		12	20 A	1	1,650	4,920					3	50 A	8	--	RTU-2	8												
9	LTG PARTS AREA A FRONT	TF	12	20 A	1			1,406	4,920			--	--	--	--		10												
11	LTG PARTS AREA A MIDDLE	TF	12	20 A	1					854	4,920	--	--	--	--		12												
13	LTG PARTS AREA A BACK		12	20 A	1	1,403	4,920					3	50 A	8	--	RTU-3	14												
15	LTG PARTS AREA B FRONT	TF	12	20 A	1			1,116	4,920			--	--	--	--		16												
17	LTG PARTS AREA B BACK	TF	12	20 A	1					1,116	4,920	--	--	--	--		18												
19	LTG PARTS AREA C	TF	12	20 A	1	1,023						--	--	--	--		20												
21	LTG OFFICE/RR	TF	12	20 A	1			124	0			--	--	--	--	SPACE	22												
23	EXTERIOR LTGS	TF	12	20 A	1					342	0	--	--	--	--	SPACE	24												
25	EXIT/SECURITY LIGHTING	TF	12	20 A	1	447	0					--	--	--	--	SPACE	26												
27	SPARE	--	--	20 A	1			0	0			--	--	--	--	SPACE	28												
29	SPARE	--	--	20 A	1					0	0	--	--	--	--	SPACE	30												
31	SPARE	--	--	20 A	1	0	0					--	--	--	--	SPACE	32												
33	SPARE	--	--	20 A	1			0	0			--	--	--	--	SPACE	34												
35	PWR EMS XFMR	--	--	20 A	1					600	600	1	20 A	--	--	PWR EMS XFMR	36												
37	EMS	--	--	20 A	3	0	0					3	20 A	--	--	EMS	38												
39	--	--	--	--	--			0	0			--	--	--	--		40												
41	--	--	--	--	--					0	0	--	--	--	--		42												
TOTAL CONNECTED						23.21		21.37		22.76		KVA																	
TOTAL CONNECTED						195.18		178.08		191.44		AMPS																	
TOTAL LOAD						67.34		KVA		186.91		AMPS																	
PER NEC ARTICLE 220 FEEDER LOAD						72.47		KVA		201.15		AMPS																	

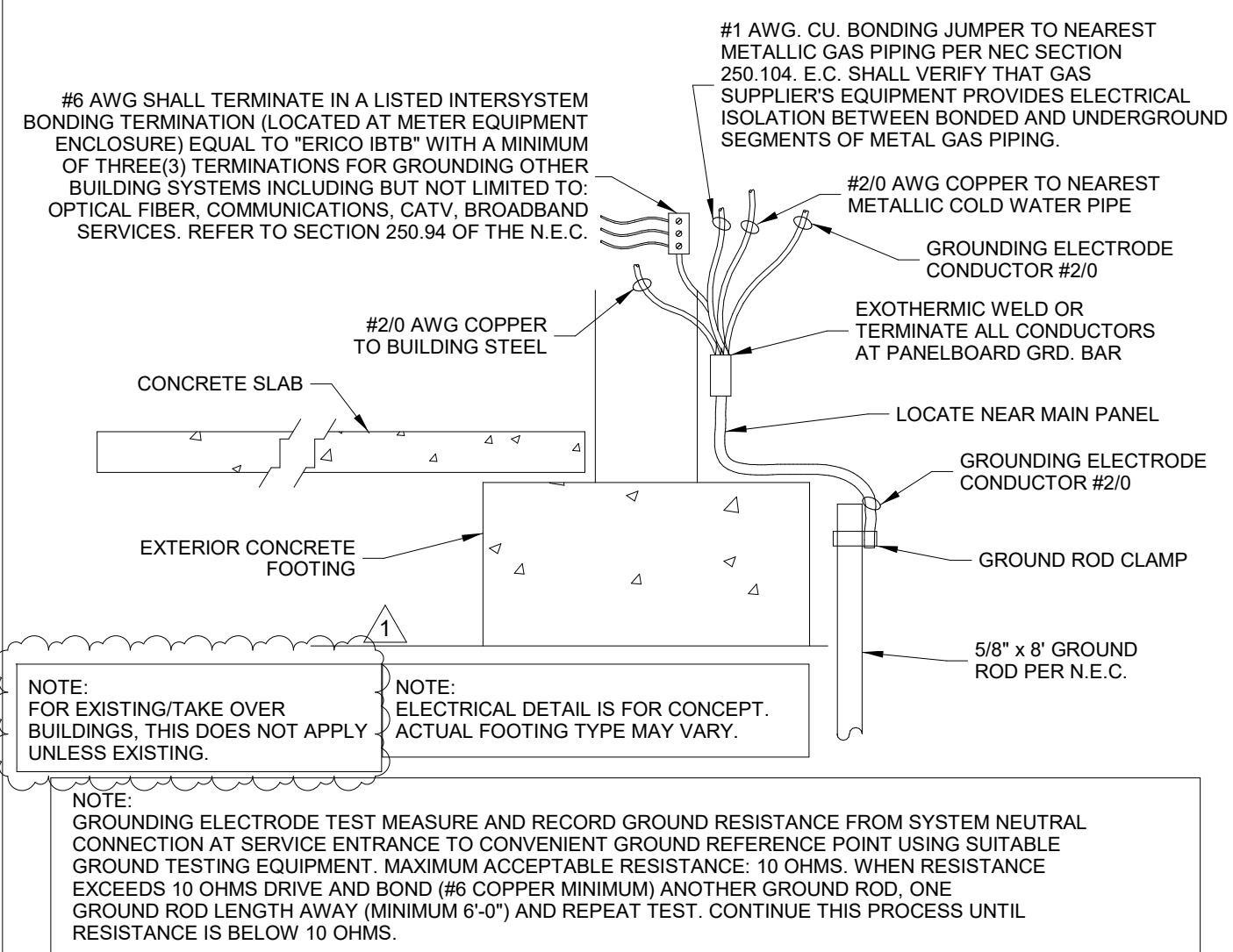
PANELBOARD: PLP																									IG BUS GROUND BUS				
BUS AMPS: 400 A MAIN SIZE/TYPE: MLO VOLTS/PHASE: 120/208 Wye,3PH,4W SERVES: GENERAL LOCATION: PARTS AREA "C" 105 MOUNTING: SURFACE																													
Load Name		NOTE	WIRE	BKR AMP	PL	A		B		C		PL	BKR AMP	WIRE	NOTE	Load Name													
1	RECPT PHONE/SECURITY	TF	12	20 A	1	540	360					1	20 A	12		FRONT COUNTER IG								2					
3	PHONE BOARD			12	20 A	1		180	360			1	20 A	12	TF	FRONT COUNTER IG								4					
5	WC/RR			12	20 A	1				900	360	1	20 A	12		FRONT COUNTER IG								6					
7	RECPT OFFICE IG	TF	12	20 A	1	180	360					1	20 A	12		FRONT COUNTER IG								8					
9	RECPT OFFICE			12	20 A	1		540	360			1	20 A	12		FRONT COUNTER IG								10					
11	RECPT OFFICE IG	TF	12	20 A	1					180	360	1	20 A	12		COKE MACHINE								12					
13	RECPT OFFICE BATT BACK			12	20 A	1	180	540				1	20 A	12		RECPT AREA A/B.R.								14					
15	RECPT PARTS AREA C			12	20 A	1		360	180			1	20 A	12		MICROWAVE								16					
17	RECPT LATHE			10	20 A	1				1,700	180	1	20 A	12		FRIG								18					
19	RECPT INSTALLER IG	TF	12	20 A	1	360	360					1	20 A	12	TF	PRINTER								20					
21	RECPT INSTALLER	TF	12	20 A	1			180	0			1	20 A	12		PWR FA (IF REQ'D)								22					
23	RECPT TEST BOX			12	20 A	1				180	180	1	20 A	12		START/ALT TEST								24					
25	RECPT CHECK IN			12	20 A	1	180	90				1	20 A	--	--	LCP								26					
27	START/ALT TEST			12	20 A	1		180	180			1	20 A	12		HYDRAULIC HOSE...								28					
29	START/ALT TEST			12	20 A	1				180	0	1	20 A	--	--	SPARE								30					
31	START/ALT TEST			12	20 A	1	180	0				1	20 A	--	--	SPARE								32					
33	POLE SIGN	TF	8	20 A	1			1,200	0			1	20 A	--	--	SPARE								34					
35											0	1	20 A	--	--	SPARE								36					
37	FRONT COUNTER IG			12	20 A	1	720	0				--	--	--	--	SPACE								38					
39	FRONT COUNTER IG			12	20 A	1		360	0			--	--	--	--	SPACE								40					
41	FRONT COUNTER IG			12	20 A	1				360	0	--	--	--	--	SPACE								42					
TOTAL CONNECTED						4.05		4.08		4.58		KVA																	
TOTAL CONNECTED						33.75		34.04		38.21		AMPS																	
TOTAL LOAD						12.71		KVA		35.28		AMPS																	
PER NEC ARTICLE 220 FEEDER LOAD						12.27		KVA		34.06		AMPS																	

- NOTE:
- BOND ALL NONCURRENT CARRYING METAL PARTS OF SERVICE EQUIPMENT (INCLUDING METER ENCLOSURE) TO GROUNDING ELECTRODE AS REQUIRED, PER NEC 250-92.
 - THE GROUNDED NEUTRAL CONDUCTOR SHALL BE RUN TO AND BONDED TO EACH SERVICE DISCONNECTING MEANS ENCLOSURE IN ACCORDANCE WITH NEC 250-24C.
 - BONDING OF OTHER ENCLOSURES SHALL BE IN ACCORDANCE WITH NEC 250-96.

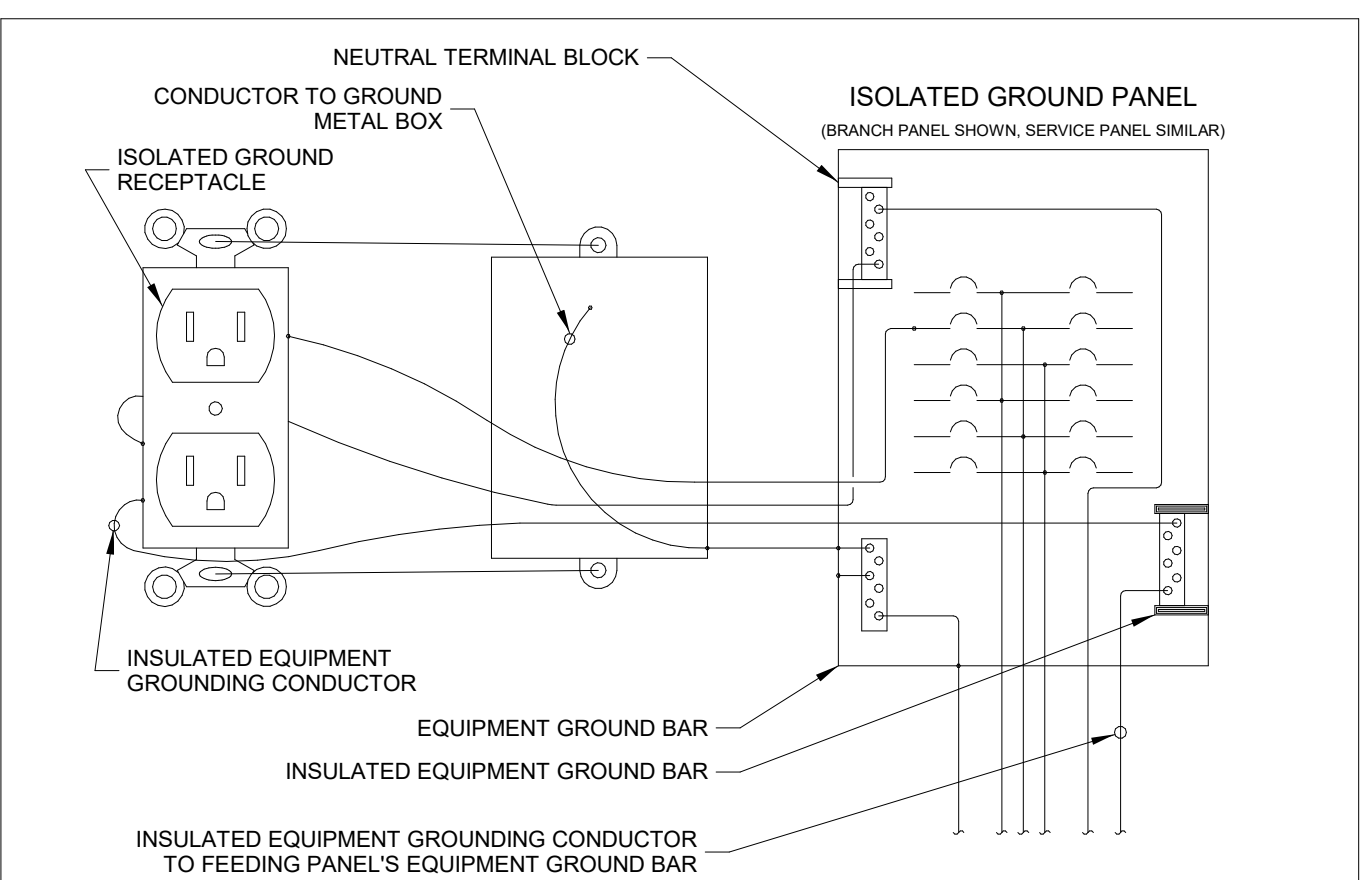
SERVICE EQUIPMENT GROUNDING & BONDING SHALL BE IN ACCORDANCE WITH:

*NEC 250-24
*NEC 250-28 *NEC 250-53 *NEC 250-66 *NEC 250-90 *NEC 250-92 *NEC 250-130

BONDING REQUIREMENTS



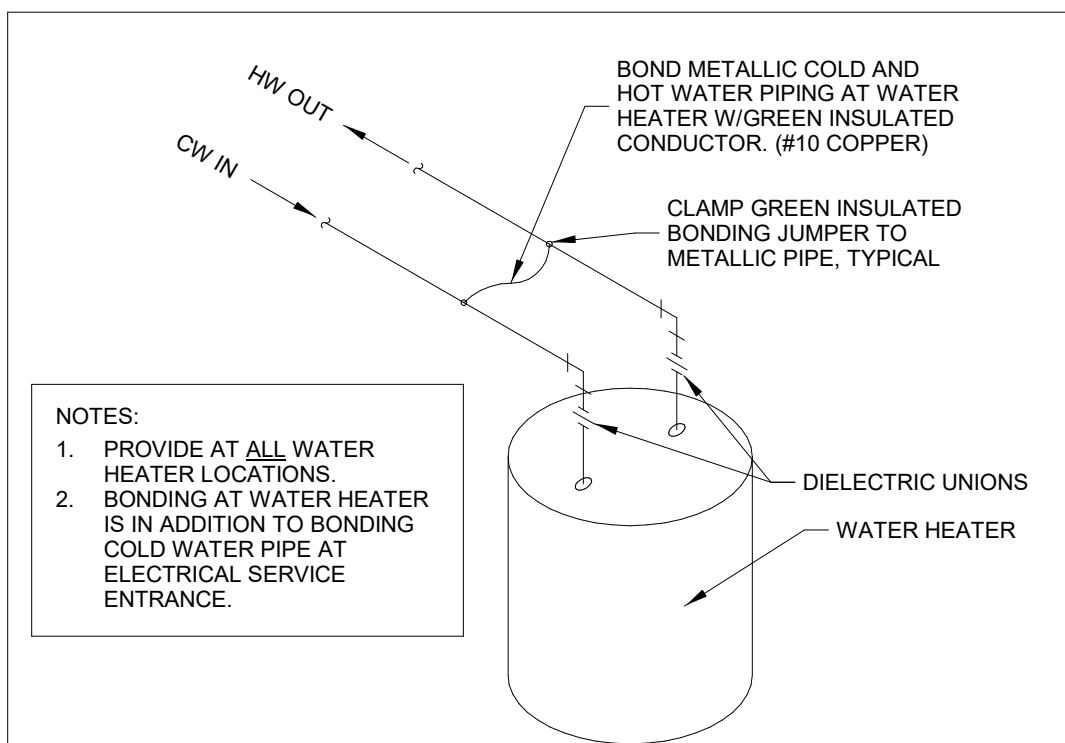
GROUNDING ELECTRODE DETAIL



TYPICAL ISOLATED GROUND RECEPTACLE

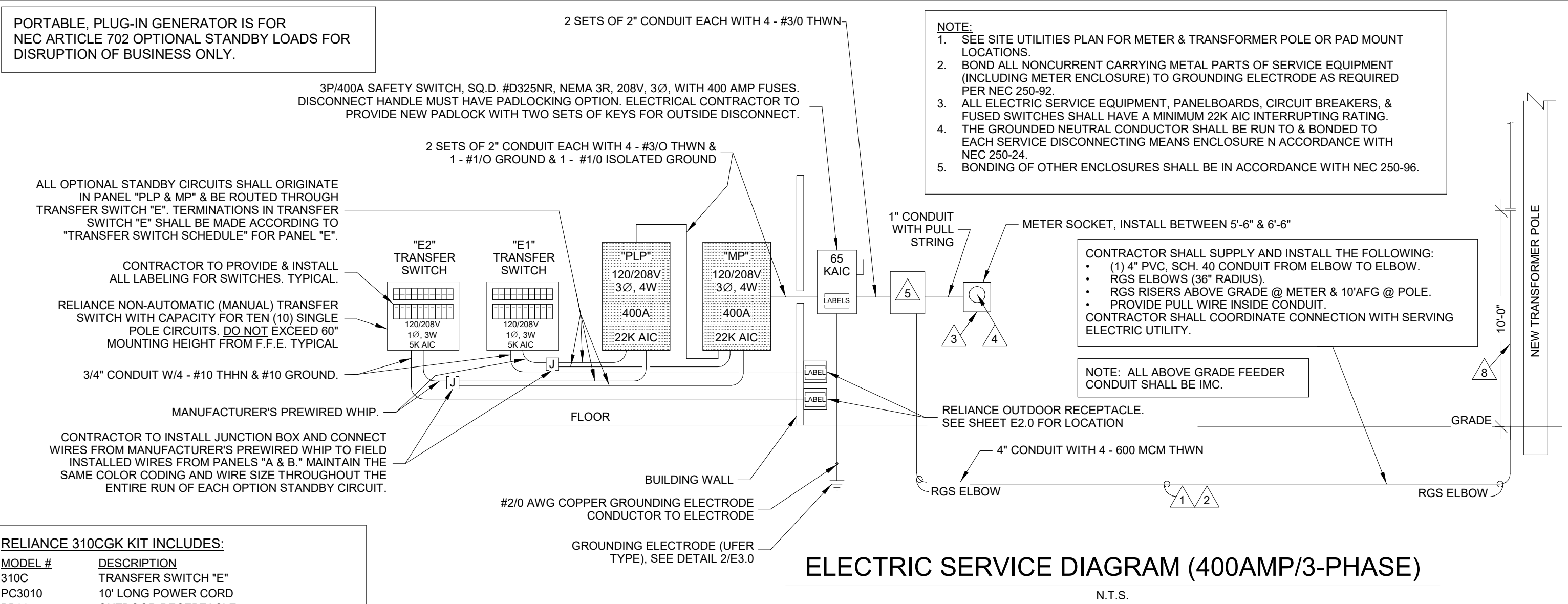
ELECTRIC SERVICE RESPONSIBILITIES					
SEE SITE PLAN FOR UTILITY COMPANY CONTACT.					
ITEM NO.	DESCRIPTION (IF APPLICABLE)	FURNISHED BY		INSTALLED BY	
		UTILITY CO.	CONTRACTOR	UTILITY CO.	CONTRACTOR
1	SERVICE LATERAL		X		X
2	SERVICE LATERAL RACEWAY		X		X
3	METER BASE	X			X
4	METER	X		X	
5	CT CABINET		X		X
6	OH SERVICE RISER @ BUILDING				
7	TRANSFORMER POLE	X		X	
8	SERVICE RISER @ POLE		X		X
9	TRANSFORMER PAD				
10	PAD MOUNT TRANSFORMER				

DOT-HATCH REPRESENTS CIRCUITS THAT ARE ASSOCIATED WITH OPTIONAL STANDBY GENERATOR CONTROL.



METALLIC WATER PIPE BONDING

ELECTRIC SERVICE DIAGRAM 400A, 3P, POLE, 2 TRANSFER SWITCH



EQUIPMENT LABELS CHART