

SYMBOLS LEGEND	
	F-1 : POLISHED CONCRETE
	F-2 : LIQUID DENSIFIER TREATED CONCRETE
	B-1 : BASE

GENERAL NOTES	
A.	REFER TO PROJECT MANUAL FOR ADDITIONAL REQUIREMENTS.
B.	FIXTURES AND EQUIPMENT SHOWN FOR REFERENCE ONLY AND ARE OWNER FURNISHED AND INSTALLED.
C.	DIMENSIONS TO ROUGH FACE OF ROUGH FRAMING OR FACE OF FIXTURE UNLESS OTHERWISE NOTED.
D.	PROVIDE SUSPENDED CEILING SEISMIC BRACING WHERE REQUIRED, REFER TO DETAIL 9/44.2.
E.	ALL FINISH SUBSTITUTION REQUEST REQUIRE OWNER PRIOR APPROVAL.

INTERIOR FINISH TYPES	
FLOORS	
F-1:	TYPE: POLISHED CONCRETE FINISH MFG. (REFER TO PROJECT MANUAL - SECTION 03 35 43) COLOR: NATURAL CONCRETE, CLEAR
F-2:	TYPE: LIQUID DENSIFIER TREATED CONCRETE FINISH MFG. (REFER TO PROJECT MANUAL - SECTION 03 30 00) COLOR: NATURAL CONCRETE, CLEAR
BASE	
B-1:	TYPE: RESILIENT BASE MFG. EQUAL TO VP1 SIZE: 4" COVE COLOR: JET, #01
WALLS	
W-1 (ONLY WHERE INDICATED):	TYPE: PRE-ENGINEERED METAL BUILDING INTERIOR LINER PANEL MFG. (REFER TO PRE-ENGINEERED METAL BUILDING SHOP DRAWINGS) SERIES: EQUAL TO BUTLER BUILDING "MOD 36" (28 GA.) COLOR: PREFINISHED EQUAL TO BUTLER BUILDING "WHITE" OR "LIGHT STONE"
W-2:	TYPE: PAINT MFG. SHERWIN WILLIAMS SERIES: SEMI GLOSS LATEX COLOR: SW6126 "NAVAJO WHITE"
W-3:	TYPE: PAINT MFG. SHERWIN WILLIAMS SERIES: SEMI GLOSS LATEX COLOR: SW6488 "HUNT CLUB"
W-4:	TYPE: SANITARY WALL AND CEILING PANEL SYSTEM MFG. (REFER PROJECT MANUAL) COLOR: WHITE
W-5:	TYPE: PAINT MFG. SHERWIN WILLIAMS SERIES: FLAT LATEX COLOR: SW6288 "TRICORN BLACK"
CEILING	
C-1:	TYPE: ACOUSTICAL TILE CEILING SIZE: 24" X 48" X 5/8" SQUARE EDGE MFG. ARMSTRONG SPECIFIED SERIES: 1729 "FINE FIGURED" COLOR: WHITE GRID SERIES: "PRELUDE" 15/16" EXPOSED TEE SYSTEM GRID COLOR: WHITE
C-2:	TYPE: EXPOSED INSULATION VAPOR BARRIER (WHITE) AND EXPOSED STEEL FRAMING SYSTEM (FACTORY PRIMED)
C-3:	TYPE: PAINT MFG. SHERWIN WILLIAMS SERIES: SEMI GLOSS LATEX COLOR: SW6126 "NAVAJO WHITE"
DOORS AND FRAMES	
D-1 (INTERIOR WOOD DOORS):	TYPE: STAIN SPECIES: CUSTOM GRADE ROTARY SLICED NATURAL BIRCH FINISH: FACTORY FINISHED COLOR: EQUAL TO "GRAHAM" #300, MEDIUM BROWN
D-2 (INTERIOR HOLLOW METAL FRAMES)	TYPE: PAINT MFG. SHERWIN WILLIAMS SERIES: SEMI GLOSS ENAMEL COLOR: SW6488 "HUNT CLUB"
D-3 (EXTERIOR DOORS & FRAMES):	TYPE: PAINT FINISH: REFER TO EXTERIOR FINISH SCHEDULE COLOR: REFER TO EXTERIOR FINISH SCHEDULE

INTERIOR FINISH SCHEDULE											
NO.	ROOM/SPACE	FLOORING		WALLS				CEILING		DOORS	
		TYPE	BASE	NORTH	EAST	SOUTH	WEST	TYPE	HEIGHT	DOOR	FRAME
100	PARTS AREA "A"	F-1	B-1	W-2.3	W-2.3	W-2.3	W-2.3	C-1	11'-6"	D-3	D-3
101	PARTS AREA "B"	F-2	NA	W-2.3	W-2	W-2	W-2	C-2	VARIES	-	-
102	OFFICE	F-2	B-1	W-2	W-2	W-2	W-2	C-3	8'-0"	D-1	D-2
103	R.R.	F-2	B-1	W-4	W-4	W-4	W-4	C-3	8'-0"	D-1	D-2
104	R.R.	F-2	B-1	W-4	W-4	W-4	W-4	C-3	8'-0"	D-1	D-2
105	PARTS AREA "C"	F-2	NA	W-2.3	W-2	W-2	W-2	D-2	VARIES	D-3	D-3
106	VESTIBULE	F-1	B-1	NA	NA	NA	NA	C-3	8'-6"	-	-

INTERIOR FINISH SCHEDULE NOTES:

1. PAINT EXTERIOR OF (102) OFFICE, (103) RESTROOM, AND (104) RESTROOM WITH W-3 AND PROVIDE BASE B-1. WHERE MULTIPLE WALL FINISH TYPES INDICATED IN SCHEDULE RELATES TO VARIOUS WALL FINISH TYPES BY ROOM OR SPACE PLAN ORIENTATION ONLY AND IS NOT INTENDED AS WAINSCOTT PATTERNING OF FINISHES ON A SINGLE WALL PLANE.

2. LOCATION OF BASE GRAPHICALLY INDICATED ON DRAWING, REFER SYMBOLS LEGEND.

3. PROVIDE PIECES OF 2' LENGTH BASE FOR INSTALLATION AT ENDS OF PARTS AREA "B" FIXTURES FACING PARTS AREA "A".

4. REFER TO ELECTRICAL DRAWINGS FOR GRID LAYOUT.

5. (WHERE OCCURS) PAINT INTERIOR ISOLATED EXPOSED STRUCTURAL STEEL COLUMNS TO MATCH W-3. (UNLESS OTHERWISE INDICATED) EXPOSED EXTERIOR PERIMETER STRUCTURAL STEEL COLUMNS TO BE FACTORY PRIMED ONLY.

6. REFER TO 14/44.1 FOR PARTS AREA "A" TYPICAL PAINT SCHEME LAYOUT AND FINISH TYPE LOCATIONS FOR ROOM INTERIOR PERIMETER WALLS.



SHEETS BEARING THIS SEAL ARE AUTHENTICATED. RESPONSIBILITY FOR ALL OTHER PLANS, SPECIFICATIONS OR INSTRUMENTS ARE DISCLAIMED.

pb2
architecture
+engineering

2809 Ajax Avenue Suite 100
Rogers Arkansas 72758
Phone: 479.636.3545
Fax: 479.636.1209
Architect of Record
William Douglas Hurley
South Carolina License No. 6706
Firm SC License No. 100115

PROJECT:
REMODEL O'REILLY AUTO PARTS STORE
1101 N. ILLINOIS ST
HARRISBURG, ARKANSAS

INTERIOR FINISH PLAN

O'Reilly
AUTO PARTS

CORPORATE OFFICES:
283 SOUTH PATTERSON
SPRINGFIELD, MISSOURI
(417) 862-2674 TELEPHONE

DRAWN BY: CM
CHECKED BY: JS

DATE:
04/19/2021

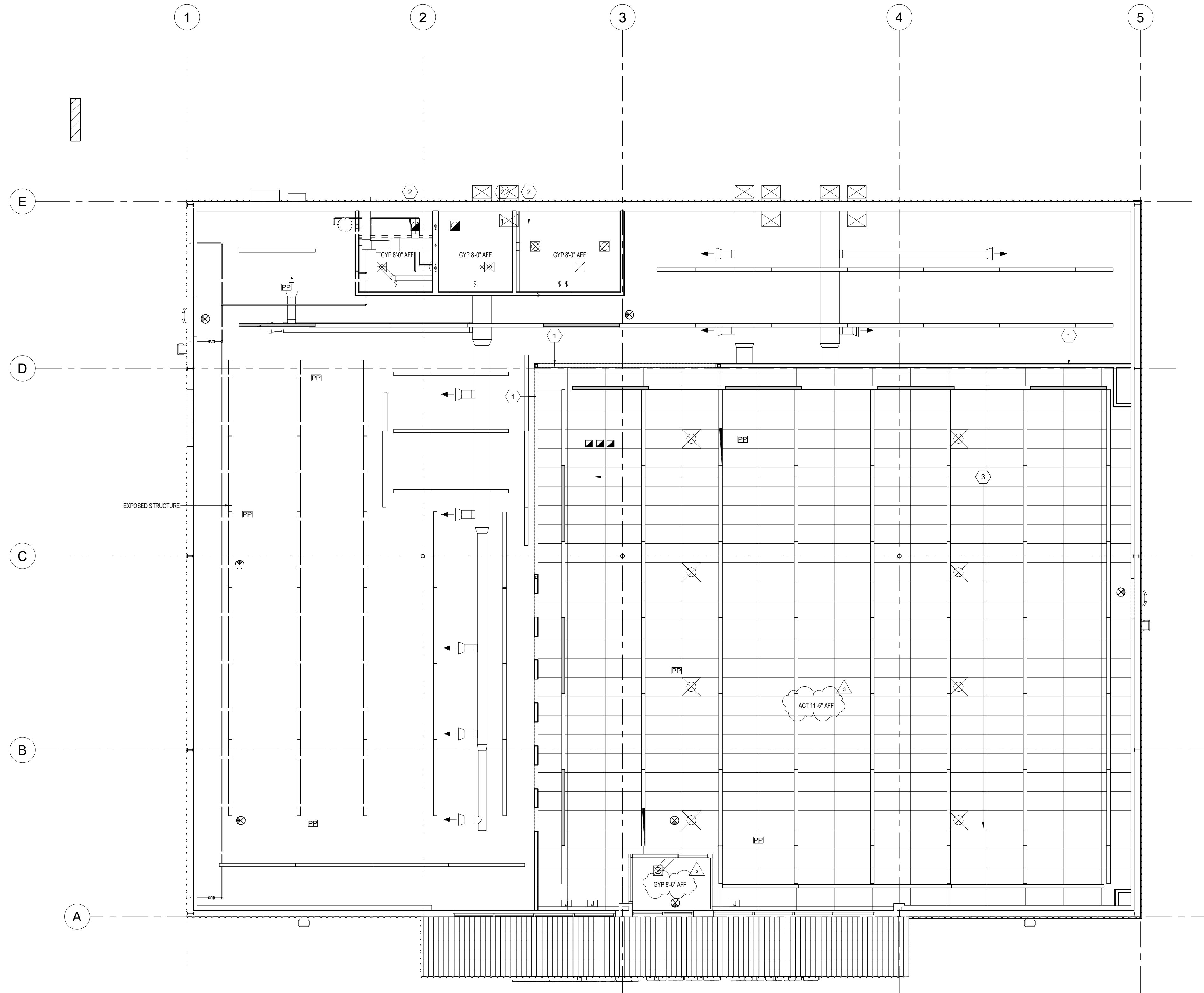
REVISION:
3 ADD #3 08.06.2021

PROJECT NUMBER:
2021.0102

SHEET NUMBER:

A1.2

COPYRIGHT 2018 - DESIGNS, DRAWINGS AND SPECIFICATIONS ARE INSTRUMENTS OF SERVICE AND ARE THE PROPERTY OF THE DESIGN PROFESSIONAL. REPRODUCTION PROHIBITED WITHOUT THE EXPRESS WRITTEN CONSENT OF THE DESIGN PROFESSIONAL.



1 REFLECTED CEILING PLAN
3/16" = 1'-0"

GENERAL NOTES

- REFER TO PROJECT MANUAL FOR ADDITIONAL REQUIREMENTS.
- MECHANICAL REGISTERS ARE SHOWN ON THIS DRAWING FOR THE ARCHITECTURAL LOCATIONS ONLY. SEE THE MECHANICAL DRAWINGS FOR TYPES, SIZES, DISTRIBUTION, CONNECTIONS, AND ALL OTHER REQUIREMENTS.
- LIGHTING FIXTURES ARE SHOWN ON THIS DRAWING FOR THE ARCHITECTURAL LOCATIONS, QUANTITIES, AND GENERAL FIXTURE TYPE ONLY. SEE ELECTRICAL DRAWINGS FOR EXACT FIXTURE TYPE AND CIRCUITING.
- CONTRACTOR SHALL COORDINATE THE INSTALLATION OF THE VARIOUS TRADE ITEMS WITHIN THE SPACE ABOVE ALL CEILINGS (INCLUDING, BUT NOT LIMITED TO, STRUCTURAL MEMBERS, MECHANICAL DUCTS AND INSULATION, CONDUITS, RACEWAYS, SPRINKLER SYSTEM, LIGHT FIXTURES, CEILING SYSTEMS, AND ANY SPECIAL STRUCTURAL SUPPORTS REQUIRED) AND SHALL BE RESPONSIBLE FOR MAINTAINING THE FINISH CEILING HEIGHT ABOVE THE FINISH FLOOR INDICATED ON THE DRAWING.
- PROVIDE SUSPENDED CEILING SEISMIC BRACING (WHERE REQUIRED), REFER TO DETAIL 9/44.2.
- REFER TO FINISH SCHEDULES FOR CEILING TYPES.

SYMBOLS LEGEND

- LED LIGHT FIXTURE
- SUPPLY GRILL
- RETURN GRILL
- EXIT LIGHT. SHADED SIDE INDICATES FACE OF EXIT SIGN. ARROW INDICATES TRAVEL DIRECTION(S).
- EMERGENCY LIGHTING W/BATTERY BACKUP

KEYNOTES

- | | |
|---|--|
| 1 | SOFFIT: 362S162-33 COLD FORM METAL STUD FRAMING WITH 5/8" TYPE "X" GYPSUM BOARD. REFER TO DETAIL 6/44.2. |
| 2 | GYPSUM CEILING: 600S162-54 COLD FORM METAL FRAMING AT 24" O.C. WITH 5/8" TYPE "X" GYPSUM BOARD. REFERENCE DETAIL 7/44.2. |
| 3 | ACOUSTICAL TILE CEILING: 1729 FINE FISSED SERIES. REFER TO A1.2 INTERIOR FINISH SCHEDULE. |



SHEETS BEARING THIS SEAL ARE AUTHENTICATED. RESPONSIBILITY FOR ALL OTHER PLANS, SPECIFICATIONS OR INSTRUMENTS ARE DISCLAIMED.

pb2
architecture
+engineering

2809 Ajax Avenue Suite 100
Rogers, Arkansas 72758
Phone: 479.436.3545
Fax: 479.636.1209

Architect of Record
William Douglas Hurley
South Carolina License No. 6704
Firm SC License No. 100115

PROJECT:
REMODEL O'REILLY AUTO PARTS STORE
1101 N. ILLINOIS ST
HARRISBURG, ARKANSAS

REFLECTED CEILING PLAN

O'Reilly AUTO PARTS

CORPORATE OFFICES
283 SOUTH PATTERSON
SPRINGFIELD, MISSOURI
(417) 862-2674 TELEPHONE

DRAWN BY: CM

CHECKED BY: JS

DATE:
04/19/2021

REVISION:
3 ADD #3 08.06.2021

PROJECT NUMBER:
2021.0102

SHEET NUMBER:

A1.3

COPYRIGHT 2018 - DESIGNS, DRAWINGS AND SPECIFICATIONS ARE INSTRUMENTS OF SERVICE AND ARE THE PROPERTY OF THE DESIGN PROFESSIONAL. REPRODUCTION PROHIBITED WITHOUT THE EXPRESS WRITTEN CONSENT OF THE DESIGN PROFESSIONAL.



2809 Ajax Avenue Suite 100
Rogers, Arkansas 72758
Phone: 479.636.3545

O'Reilly Remodel
Harrisburg, AR. (HRB)

August 6, 2021
ADDENDUM THREE
JOB # 2021.0102

TO: All General Contractors

This Addendum is an integral part of the Contract Documents and shall be treated as such. Contractor shall acknowledge receipt of this Addendum on the Bid Form.

SCOPE: This Addendum is to revise the previously issued documents of
[Harrisburg, AR.](#) to reflect the following changes:

SCOPE

Description: This Addendum consists of Drawing Sheets A1.2, A1.3, E1.0, & E2.0, & E3.0.

This description is for information only and does not supersede vendor responsibility to verify drawing information.

ARCHITECTURAL

- A1.2 Interior Finish Plan
Item 1: Interior Finish Schedule: Added ceiling height for room 100 Parts Area A and ceiling material for room 106 Vestibule.
- A1.3 Reflected Ceiling Plan
Item 1: Detail 1: Added ceiling callout in Parts Area A and Vestibule

ELECTRICAL

- E1-0 LIGHTING PLAN
Item 1: Changed fixture circuit for 3 light fixtures.
Item 2: Changed night lights configuration.
- E2-0 POWER PLAN
Item 1: Added receptacle for cut-in saw.
Item 2: Removed 4 receptacles.
Item 3: Relocated 2 receptacles.
Item 4: Added 2 Reliance outdoor receptacles.
- E3-0 ELECTRICAL SCHEDULES
Item 1: Revised panel schedules.
Item 2: Revised Transfer Switch Schedule.

LIGHTING FIXTURE SCHEDULE										
MARK	MFR.	CATALOG NUMBER	VOLTAGE	FINISH	MOUNTING	LAMP	WATTAGE	ACCESSORIES	NOTES	QTY
(none)										
A	LSI	SDL8 LED 80L FL UNV DIM1 40 80CRI OR - NO SUBSTITUTIONS	120V	WHITE	SURFACE (CEILING)	LED	62	GRID HANGERS (2 PER FIXTURE)	8'-0" LED STRIP W/ 0-10V DIMMING DRIVER. PROVIDE 2 GRID HANGERS (648480) PER FIXTURE.	58
AE	LSI	SDL8 LED 80L FL UNV DIM1 40 80CRI EM10 OR - NO SUBSTITUTIONS	120V	WHITE	SURFACE (CEILING)	LED	62	GRID HANGERS (2 PER FIXTURE)	8'-0" LED STRIP W/ 0-10V DIMMING DRIVER 10W EM BATTERY PACK (EM10). PROVIDE UNSWITCHED POWER SOURCE TO EACH FIXTURE (REFER 1/E1) . PROVIDE 2 GRID HANGERS (648480) PER FIXTURE.	2
B	LSI	SDL4 LED 40L FL UNV DIM1 40 80CRI OR - NO SUBSTITUTIONS	120V	WHITE	SURFACE (CEILING)	LED	30	GRID HANGER (2 PER FIXTURE)	4'-0" LED STRIP W/ 0-10V DIMMING DRIVER. PROVIDE 2 CEILING GRID HANGERS (648480) PER FIXTURE.	11
C	LSI	SDL8 LED 80L FL UNV DIM1 40 80CRI OR - NO SUBSTITUTIONS	120V	WHITE	SUSPENDED	LED	62	5' CHAIN KIT	8'-0" LED STRIP W/ 0-10V DIMMING DRIVER. PROVIDE (1) 5' CHAIN HANGING KIT PER FIXTURE. SUSPEND AT 12'-0" AFF UNO WITH CHAIN KIT, EC TO VERIFY LENGTH OF CHAIN REQUIRED.	53
D	LSI	SDL4 LED 40L FL UNV DIM1 40 80CRI OR - NO SUBSTITUTIONS	120V	WHITE	SUSPENDED	LED	30	5' CHAIN KIT	4'-0" LED STRIP W/ 0-10V DIMMING DRIVER. PROVIDE (1) 5' CHAIN HANGING KIT PER FIXTURE. SUSPEND AT 12'-0" AFF UNO WITH CHAIN KIT, EC TO VERIFY LENGTH OF CHAIN REQUIRED.	8
RH2	COOPER	APWR2	120V	WHITE	SURFACE	LED	1		REMOTE DUAL LED HEAD EXTERIOR EMERGENCY LIGHT. POWERED FROM XR.	3
S	LITHONIA	CVST L48 4000LM MVOLT 40K 80CRI	120V	WHITE	SURFACE	LED	34		4'-0" ENCLOSED AND GASKETED LED STRIP WITH 360° INTEGRAL MOTION SENSOR WITH ON/OFF OPERATION.	5
W	LSI	XWM-2-LED-6L-40	120V	WHITE	SURFACE	LED	44	--	WALL PACK	4
XR	COOPER	APCH7R (RED LETTERS)	120V	WHITE	SURFACE	LED	2		COMBINATION LED EXIT SIGN AND LIGHT WITH UNIVERSAL MOUNTING OF ILLUMINATION PER NEC 700.12(A). IF CEILING HEIGHT IS 11'-7" OR LOWER, CEILING MOUNT. IF SEILING IS HIGHER THAN 11'-7" WALL MOUNT.	10

ALL ITEMS LISTED ON THE "LIGHT FIXTURE SCHEDULE"
WILL BE SUPPLIED BY THE OWNER (O'REILLY). ITEMS
SHALL BE DIRECT ORDERED AND OR RELEASED FROM
THE LISTED ELECTRICAL EQUIPMENT DISTRIBUTOR.

GRAYBAR ELECTRIC CO. INC.
118855 LACKLAND ROAD
ST. LOUIS, MO 63146

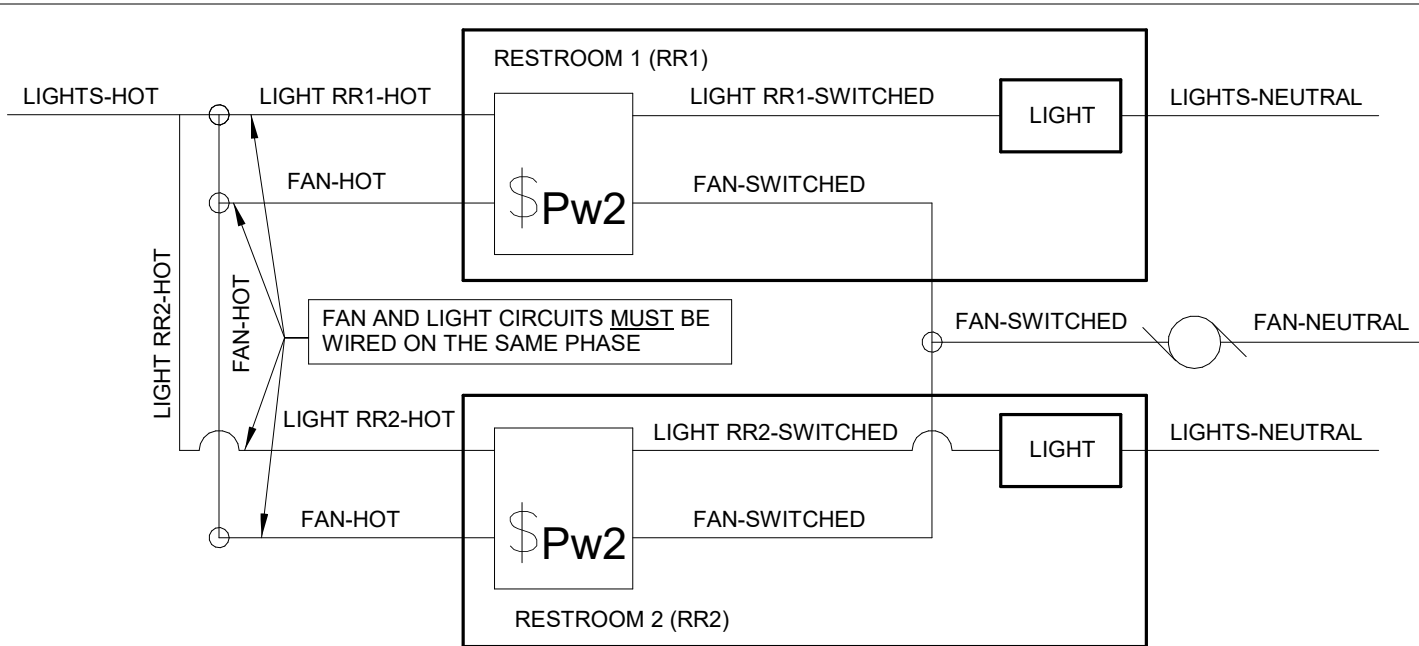
CONDUIT REQUIREMENTS

- ALL WIRING SHALL BE IN CONDUIT, EXCEPT THAT MC-CABLE
MAY BE SUBSTITUTED ONLY AS FOLLOWS:
- MC-CABLE (MAXIMUM CABLE LENGTH OF 10'-0") MAY BE
INSTALLED ONLY FOR BRANCH CIRCUIT WIRING TO LIGHT
FIXTURES.
 - "MC-CABLE (MAXIMUM CABLE LENGTHS SHOWN ON DETAIL
2/E2.0) MAY BE INSTALLED ONLY ABOVE SLAB AND ONLY AT
LOCATIONS INDICATED ON E2.0 SHEET."
- SEE SHEET E4.0 FOR MORE REQUIREMENTS

EXIT SIGNS

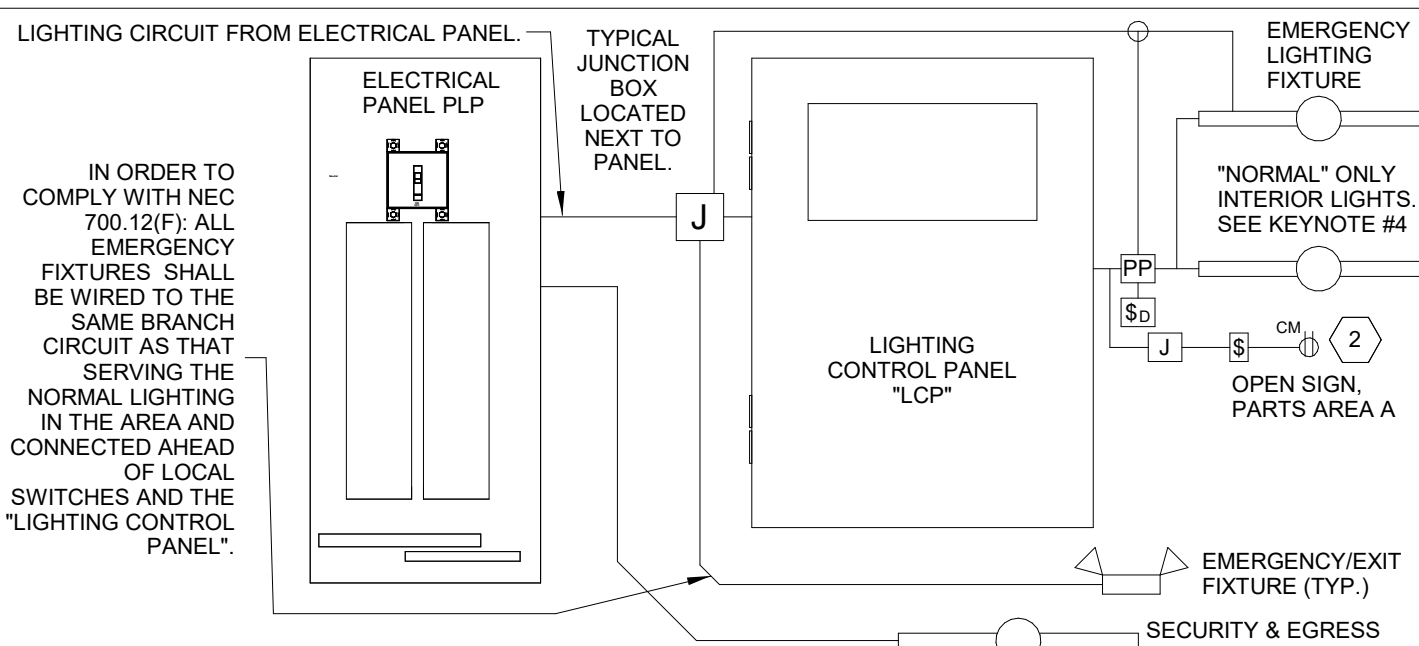
REFER TO NOTES IN "LIGHT FIXTURE SCHEDULE" FOR MINIMUM
MOUNTING HEIGHT FOR EXIT SIGNS (FIXTURE "XR"). ALL EXIT
SIGNS MUST BE CLEARLY VISIBLE, NOT OBSCURED BY
SHELVING AND/OR MERCHANDISE AND COORDINATED WITH
INTERIOR PAINT SCHEME. CONFIRM SHELVING HEIGHT(S) AND
PAINT SCHEME WITH O'REILLY REPRESENTATIVE PRIOR TO
INSTALLATION.

THE MAXIMUM HEIGHT FOR AN EXIT LIGHT ASSOCIATED WITH A
SPECIFIC OPENING (I.E. MOUNTED OVER A DOOR OR OPENING)
SHALL BE NO GREATER THAN THE CODE ALLOWED 6'-8" ABOVE
THE TOP EDGE OF THE DOOR OR OPENING.



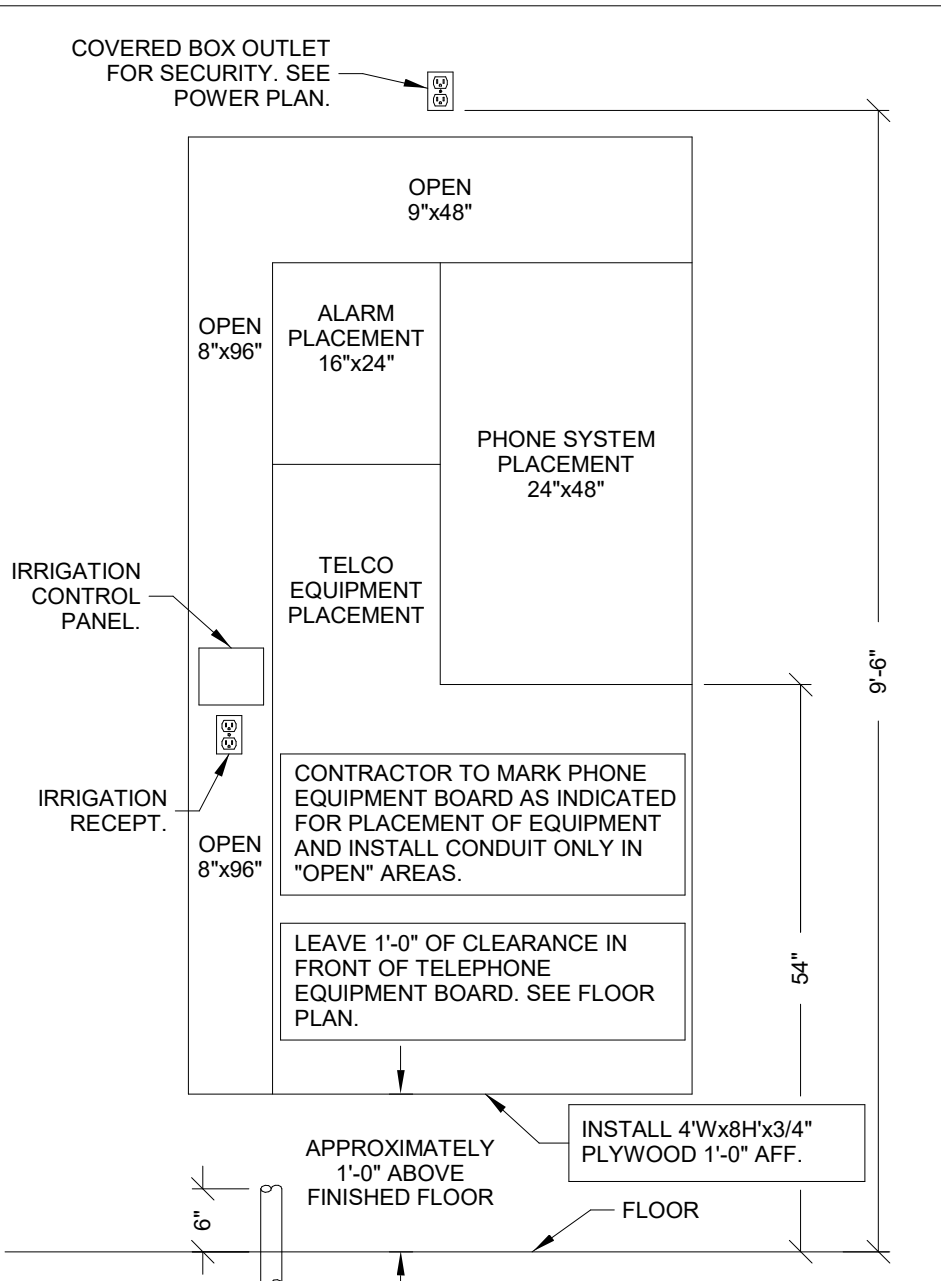
RESTROOM EXHAUST FAN WIRING DIAGRAM

2
E1.0
N.T.S



EMERGENCY/EXIT LIGHTING CONNECTION DIAGRAM

1
E1.0
N.T.S



TELEPHONE EQUIPMENT BOARD

3
E1.0
N.T.S

AUTOMATIC LIGHTING CONTROL

COMPLIANCE WITH ENERGY CODE IS ACHIEVED BY:

- ONCE THE EMS HAS BEEN PROGRAMMED, THE INTERIOR AND EXTERIOR LIGHTS WILL TURN ON AND OFF USING THE FOLLOWING LOGIC: SEE EM SHEETS.

INTERIOR WORK LIGHTING WILL TURN ON WITH FIRST MOTION IN THE STORE AND WILL TURN OFF 15 MINUTES AFTER LAST MOTION ONCE THE STORE IS CLOSED.

INTERIOR SALES LIGHTS WILL TURN ON AT STORE OPENING AND TURN OFF 15 MINUTES AFTER STORE CLOSING.

EXTERIOR SIGN LIGHTS WILL TURN ON WHEN ITS DARK ENOUGH OUTSIDE ANYTIME DURING STORE HOURS, AND WILL TURN OFF AT STORE CLOSING.

EXTERIOR SITE LIGHTS WILL TURN ON WHEN IT IS DARK ENOUGH OUTSIDE AND IT IS WITHIN STORE HOURS OR THERE IS MOTION IN THE STORE. THEY WILL TURN OFF 30 MINUTES AFTER LAST MOTION ONCE THE STORE IS CLOSED.

FOR NEW CONSTRUCTION LOCATIONS ONLY, THERE IS A TEMPORARY PROGRAM TO KEEP SIGN AND SITE LIGHTS ON UNTIL MIDNIGHT RATHER THAN THE TIMES INDICATED ABOVE. O'REILLY WILL DISABLE THIS PROGRAM ONE YEAR AFTER STORE OPENING.

- RESTROOMS AND OFFICES: ALL LIGHTING IN THESE AREAS ARE CONTROLLED BY OCCUPANT-SENSING DEVICES.

INTERIOR LIGHTING ZONES

ALL INTERIOR LIGHTING WITHIN PARTS AREA "A" SHALL BE CONSIDERED "SALES" ZONE (ON ONLY WHEN STORE IS OPEN FOR BUSINESS).

ALL INTERIOR LIGHTING WITH PARTS AREA "B", PARTS AREA "C", RESTROOMS, OFFICE, AND BREAK AREA SHALL BE CONSIDERED "WORK" ZONES (ON WHENEVER THERE IS MOTION OR THE STORE IS OPEN).

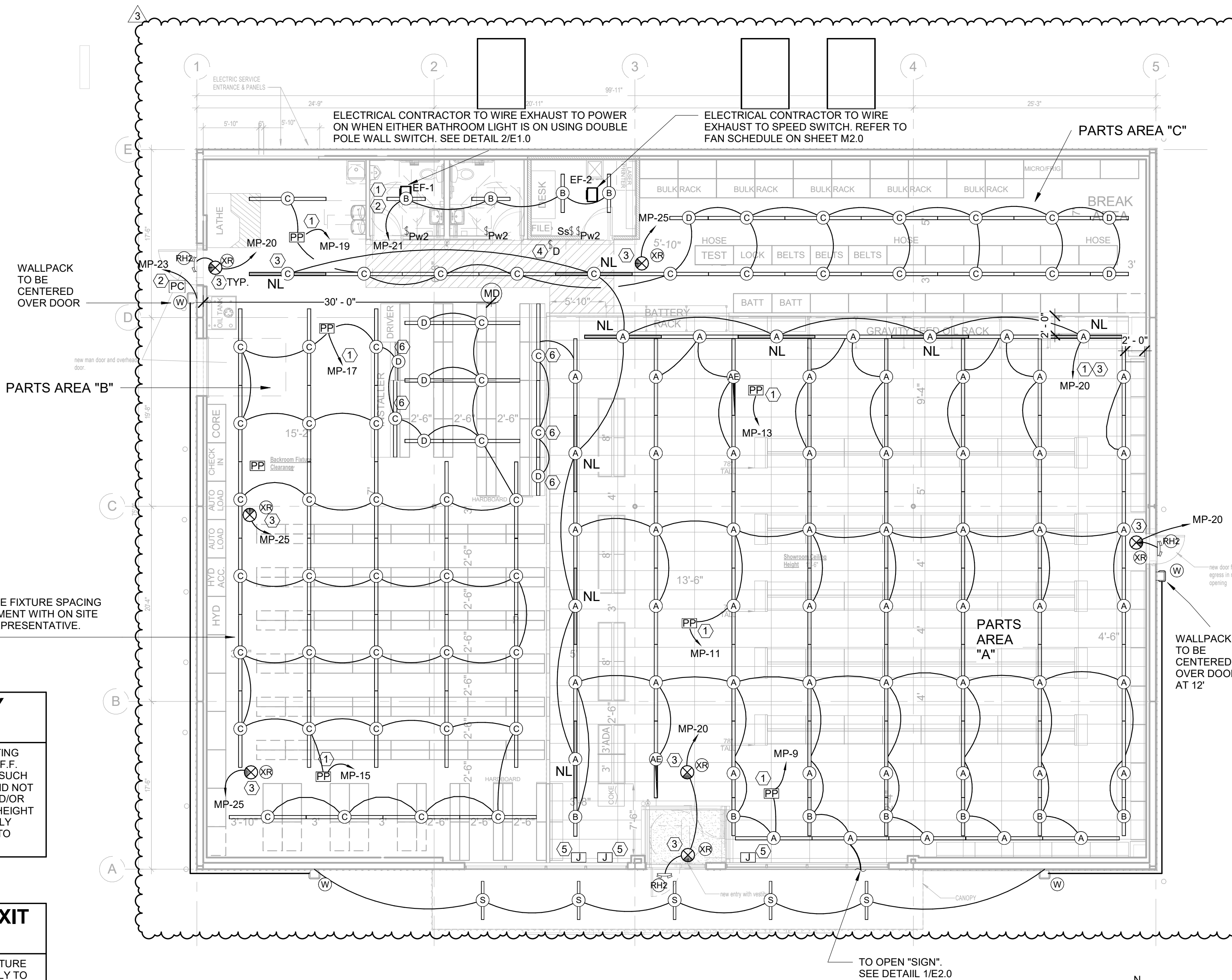
SEISMIC RESTRAINTS (ONLY REQUIRED FOR SEISMIC DESIGN CATEGORIES C,D,E,F)

CONTRACTOR TO REFER TO ARCHITECTURAL SHEET G1.1 FOR SEISMIC DESIGN CATEGORY.

IF REQUIRED SEE SEISMIC DETAILS SHEET ME1.

LIGHTING - KEYNOTES

- ROUTE CIRCUIT THROUGH "E" PANEL TRANSFER SWITCH. SEE "E" PANEL TRANSFER SWITCH SCHEDULE ON SHEET E3.0
- VIA LIGHTING CONTROL PANEL. SEE EM SHEET.
- ALL EXIT AND NIGHT LIGHTS TO BE ON CIRCUIT MP-25.
- DIMMER LIGHTING CONTROL SWITCHES LOCATED ON OUTSIDE WALL OF OFFICE. SEE LIGHTING PLAN FOR QUANTITY. SEE DETAILS ON SHEET E4.0 FOR MORE INFORMATION.
- MOUNT J-BOX INSIDE BUILDING AND FLEX CONDUIT THRU WALL FOR POWER SUPPLY TO ILLUMINATED SIGN. EXACT LOCATION OF PENETRATIONS SHALL BE COORDINATED WITH SIGN COMPANY. PENETRATIONS SHALL BE BEHIND SIGNAGE. WATERPROOF WITH ELASTOMERIC POLYURETHANE (NO EXCEPTIONS) EQUAL TO "VULKEM" 116. WIRE TO SIGN WITH 15' OF WIRING "WHIP" (SHALL BE FLEX OR TYPE MC CABLE). COIL AND "CABLE TIE" WIRING "WHIP" TO WALL ABOVE CEILING. TYPICAL.
- SUSPEND 8'-0" A.F.F. THIS FIXTURE ONLY.



EMERGENCY LIGHTING

INSTALL EMERGENCY LIGHTING FIXTURES MINIMUM 12'-8" A.F.F. FIXTURE SHALL BE LOCATED SUCH THAT IT IS CLEARLY VISIBLE AND NOT OBSCURED BY SHELVING AND/OR MERCHANDISE. FIELD VERIFY HEIGHT OF SHELVING WITH O'REILLY REPRESENTATIVE PRIOR TO INSTALLATION.

EMERGENCY/EXIT CIRCUITING

ROUTE EMERGENCY/EXIT FIXTURE PORTION OF CIRCUIT DIRECTLY TO CIRCUIT BREAKER. FIXTURE SHALL NOT BE SWITCHED BY LIGHTING CONTROL SYSTEM. SEE DETAIL 1/E1.0. TYPICAL. SEE N.E.C. 700.12(F).



pb2
architecture
+engineering

2809 Ajax Avenue Suite 100
Rogers Arkansas 72758
Phone: 479.636.3545
Fax: 479.636.1209

Engineer of Record
Keith Allen Williams, P.E.
Arkansas License No.12409
Firm Certificate No. 885

PROJECT:
RE-MODEL O'REILLY AUTO PARTS STORE
1101 N. ILLINOIS ST
HARRISBURG, AR 72432

AUTO PARTS

O'Reilly
CORPORATE OFFICES
233 SOUTH PATTERSON
SPRINGFIELD, MISSOURI
(417) 862-2674 TELEPHONE

DRAWN BY: MF CHECKED BY: TJ

DATE: 04/26/2021

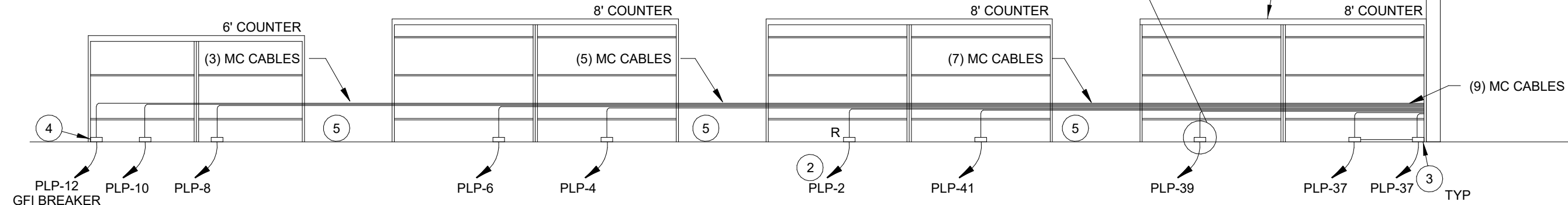
REVISION: ADDENDUM 3
3 08.05.2021

PROJECT NUMBER:
2021.0102

SHEET NUMBER:

E1.0

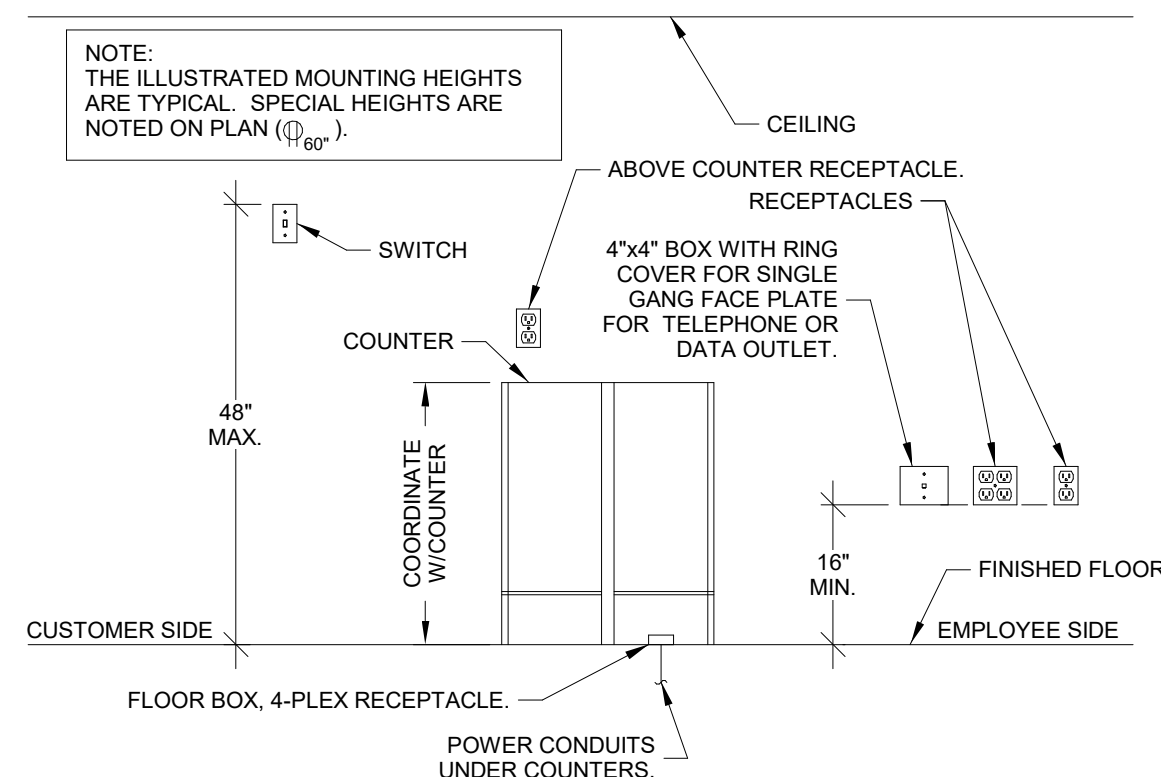
- 4-PLEX OUTLET WITH
ISOLATED GROUND. SEE
DETAIL 4/E2.0, TYPICAL.
- EACH BOX SHALL BE SECURELY
ANCHORED WITH A MINIMUM OF
(2) 3/16" x 1-1/2" "TAPCON"
CONCRETE SCREWS.



1
E2.0

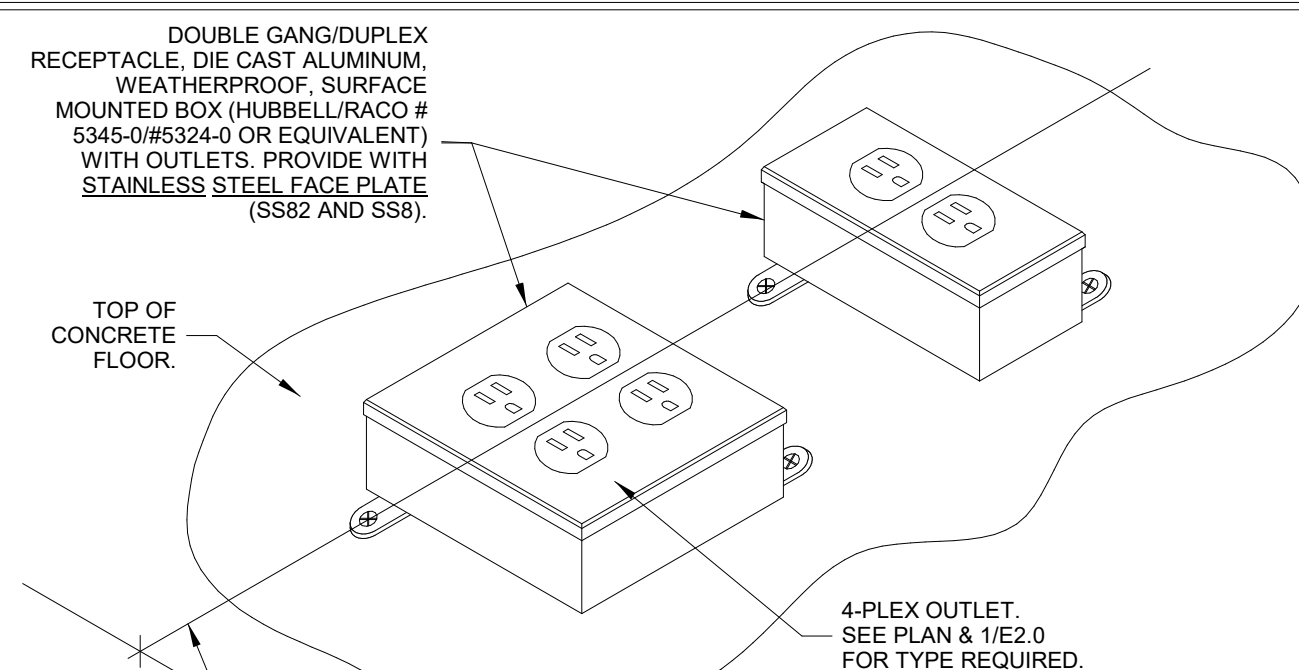
FL
N.T.S

VISUAL REFERENCE ONLY



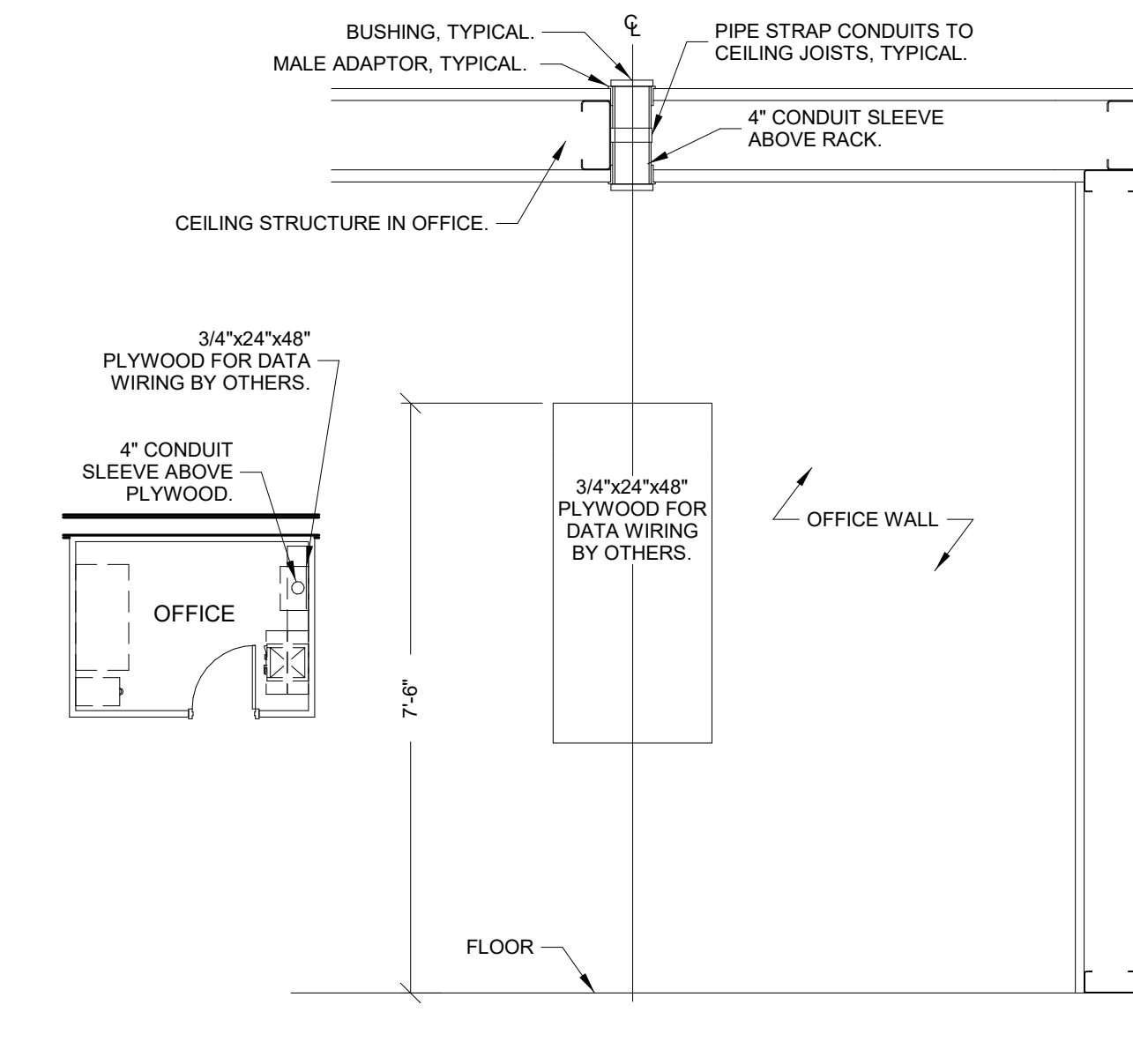
3
E2.0

N.T.S



4 FL
E2.0 N.T.S

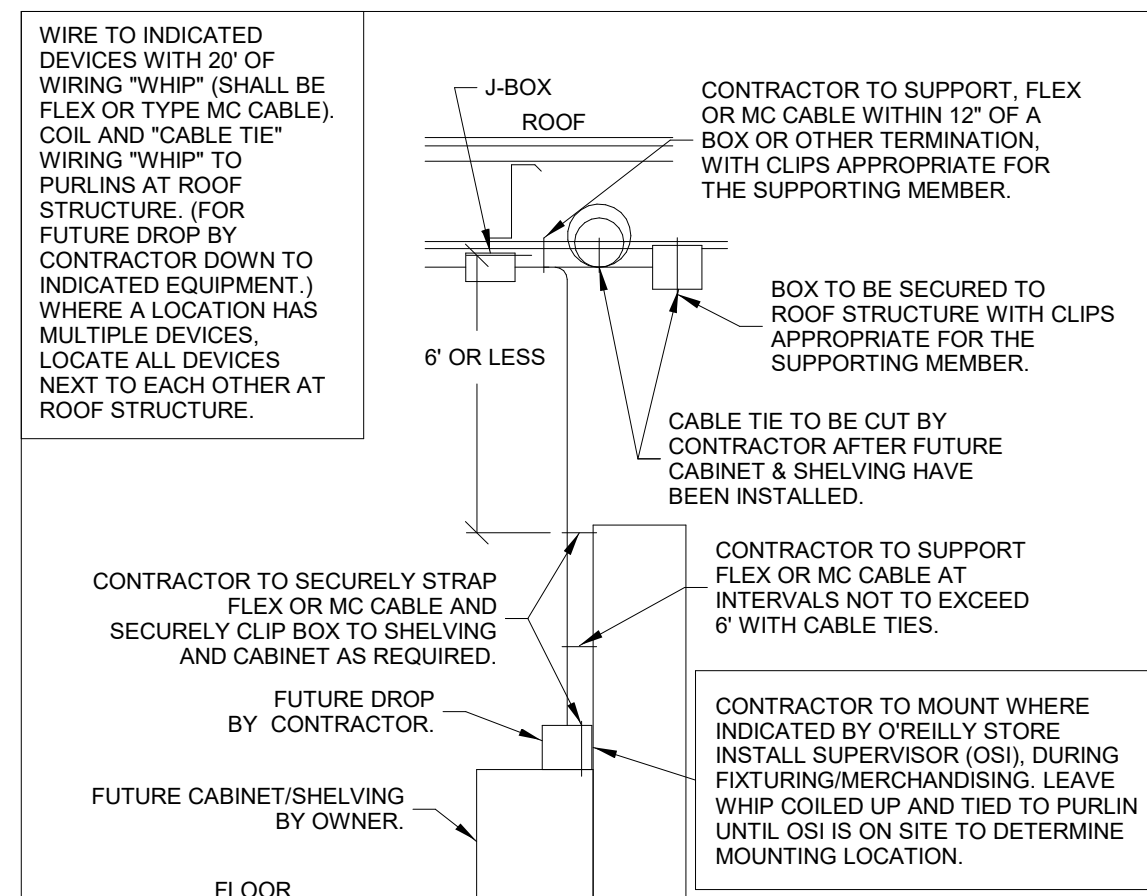
N.T.S



NOTE:
SEE POWER PLAN FOR
OFFICE CONFIGURATION.

6
E2.0

N.T.S



2
E2.0

N.T.S

- A. ELECTRICAL CONTRACTOR SHALL PROVIDE AND INSTALL ALL TELEPHONE AND DATA CONDUITS.
- B. ELECTRICAL CONTRACTOR SHALL VACUUM OUT ALL CONDUITS TO REMOVE WATER.
- C. ELECTRICAL CONTRACTOR SHALL PROVIDE PULL-STRING IN EACH CONDUIT.
- D. OWNER SHALL PROVIDE AND INSTALL ALL TELEPHONE AND DATA WIRING.

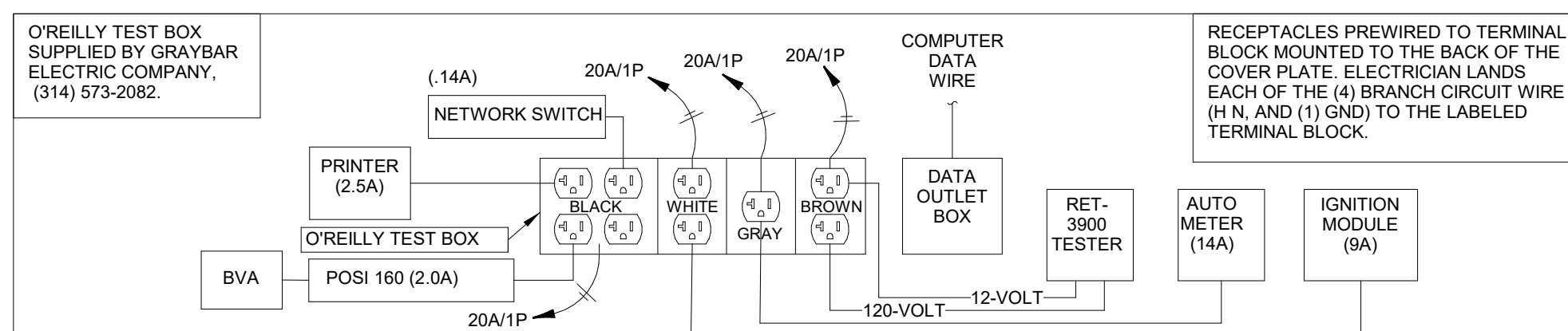
ALL WIRING SHALL BE IN CONDUIT, EXCEPT THAT MC-CABLE MAY BE SUBSTITUTED ONLY AS FOLLOWS:

- A. MC-CABLE (MAXIMUM CABLE LENGTH OF 10'-0") MAY BE INSTALLED ONLY FOR BRANCH CIRCUIT WIRING TO LIGHT FIXTURES.
- B. "MC-CABLE (MAXIMUM CABLE LENGTHS SHOWN ON DETAIL 2/E2.0) MAY BE INSTALLED ONLY ABOVE SLAB AND ONLY AT LOCATIONS INDICATED ON E2.0 SHEET."

SEE SHEET E4.0 FOR MORE REQUIREMENTS

IN FRONT OF ALL METER PANELS, SUB PANELS, TRANSFORMERS, AND DISCONNECTS, PROVIDE A WORKING SPACE IN FRONT, ON THE FLOOR. RECTANGLE, PAINT WITH CONTRASTING COLOR, 4-INCH BRUSH STROKES WITH DIAGONAL LINES INSIDE, WITH 6-INCH LETTERS, "NO STORAGE" BLOCKED IN, AND/OR LARGE STICKER SAYING THE SAME THING. 4'-0" DEPTH TYPICAL AT ALL LOCATIONS.

NOTE:
ALL PANELBOARDS, TRANSFORMERS, TRANSFER SWITCH KIT AND DISCONNECTS WILL BE SUPPLIED BY THE OWNER (O'REILLY). ELECTRICAL GEAR SHALL BE DIRECT ORDERED AND/OR RELEASED FROM THE LISTED ELECTRICAL EQUIPMENT DISTRIBUTOR LISTED ON SHEET E3.0.



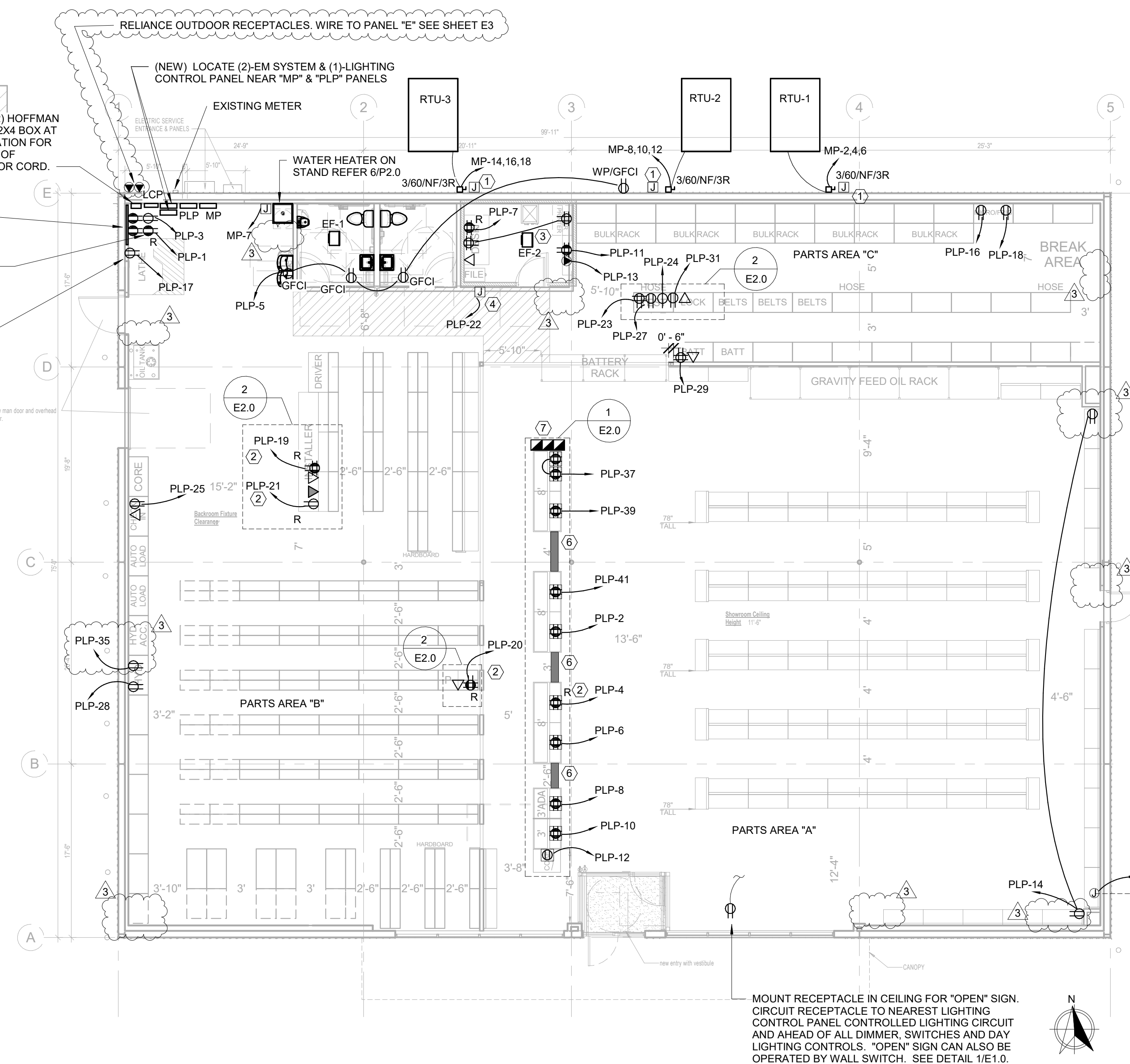
5
E2.0

PL
N.T.S

N.T.S

<div style="display: flex; align-items: center; justify-content: center;"> POWER KEYNOTES </div>	
1	CONTRACTOR TO INSTALL J-BOX, CONDUIT, AND PULL STRING FOR FIRE ALARM. MOUNT J-BOX BELOW OPTIONAL CONVENIENCE OUTLET LOCATION. REFERENCE SHEET M2.0
2	ROUTE CIRCUIT THROUGH "E" PANEL TRANSFER SWITCH. SEE "E" PANEL TRANSFER SWITCH SCHEDULE ON SHEET E3.0
3	FLOOR 4-PLEX ISOLATED GROUND RECEPTACLE. SEE DETAIL 4/E2.0
4	J-BOX/CIRCUIT FOR FIRE ALARM SYSTEM INSTALLED IF, AND ONLY IF, FIRE ALARM SYSTEM IS REQUIRED. CONTRACTOR SHALL CONFIRM THAT SYSTEM IS REQUIRED PRIOR TO ROUGH-IN. THE BREAKER SHALL BE PAINTED RED AND LOCKABLE.
5	REQUIRED POWER TO POLE SIGN, TO BE CONTROLLED THROUGH LIGHTING CONTROL PANEL. COORDINATE WITH CIVIL PLANS FOR EXACT LOCATION OF SIGN.
6	INSTALL "ADAMS HALL DEFENDER COMPACT PROJECTOR 85100" RACEWAY ON FLOOR BETWEEN COUNTERS. TYPICAL.
7	HUBBLE POWER POLE.

IN THE EVENT A MONITORED FIRE ALARM SYSTEM IS REQUIRED BY THE AUTHORITY HAVING JURISDICTION, THE ALARM SYSTEM WILL BE CONTRACTED DIRECTLY BY THE ALARM SERVICES MANAGER, LEIGH SIDES, WITH THE O'REILLY AUTOMOTIVE CORPORATE OFFICE. THE GENERAL CONTRACTOR SHALL NOT PROCURE ANYONE TO INSTALL OR QUOTE THESE SYSTEMS UNLESS THEY HAVE BEEN ASKED TO DO SO BY LEIGH SIDES. PLEASE CONTACT LEIGH SIDES AT (417) 829-5712 IF A SYSTEM IS NEEDED OR IF THERE ARE ANY QUESTIONS.



— MOUNT RECEPTACLE IN CEILING FOR "OPEN" SIGN
CIRCUIT RECEPTACLE TO NEAREST LIGHTING
CONTROL PANEL CONTROLLED LIGHTING CIRCUIT
AND AHEAD OF ALL DIMMER, SWITCHES AND DAY
LIGHTING CONTROLS. "OPEN" SIGN CAN ALSO BE
OPERATED BY WALL SWITCH. SEE DETAIL 1/E.1.0.



pb2
architecture
+engineering

2809 Ajax Avenue Suite 100
Rogers Arkansas 72758
Phone: 479.636.3545
Fax: 479.636.1209

Engineer of Record
Keith Allen Williams, P.E.
Arkansas License No. 12409
Firm Certificate No. 885

PROJECT:
BRE-MODEL O'REILLY AUTO PARTS STORE
1101 N. ILLINOIS ST
HARRISBURG, AR 72432

POWER PLAN

AUTO PARTS



DRAWN BY: MF
CHECKED BY: TJ

DATE:
04/26/2021

REVISION:
3 ADDENDUM 3
08.05.2021

PROJECT NUMBER:
2021.0102

SHEET NUMBER:

E2.0

LOADCENTER: MP (NEW)															
BUS AMPS: 400A MAIN SIZE/TYPE: 400A M.C.B. VOLTS/PHASE: 208Y/120V, 3PH, 4W SERVES: O'REILLY'S LOCATION: SUPPORT, ROOM #105					AIC RATING: FULLY RATED					EQUIPMENT GROUND BUS ISOLATED GROUND BUS FEED THRU LUGS					
MOUNTING: SURFACE															
CKT NO.	DESCRIPTION	VA/PHASE			WIRE NO.	BKR AMP	P	P	BKR AMP	WIRE NO.	VA/PHASE			DESCRIPTION	CKT NO.
		A	B	C							A	B	C		
1	SPARE							3	50	8	4,920			RTU-1	2
3	SPARE							--	--		4,920			--	4
5	SPARE							--	--			4,920		--	6
7	W.H.	1,650			12	20	1	3	50	8	4,920			RTU-2	8
9	LTS PARTS AREA A		1,406		12	20	1	--	--		4,920			--	10
11	LTS PARTS AREA A			915	12	20	1	--	--			4,920		--	12
13	LTS PARTS AREA A	1,253			12	20	1	3	50	8	4,920			RTU-3	14
15	LTS PARTS AREA B		1,178		12	20	1	--	--		4,920			--	16
17	LTS PARTS AREA B			1,023	12	20	1	--	--			4,920		--	18
19	LTS PARTS AREA C	1,023			12	20	1	1	20	12	559			LTS SECURITY	20
21	LTS OFFICE/RR		124		12	20	1	1	20	12				SPACE	22
23	EXTERIOR LTS			342	12	20	1	1	20	12				SPACE	24
25	EXIT/EGRESS	14			12	20	1	1	20	12				SPACE	26
27	SPARE													SPACE	28
29	SPARE													SPACE	30
31	SPARE													SPACE	32
33	SPARE													SPACE	34
35	PWR EMS XFMR			600	12	20	1	1	20	12		600		PWR EMS XFMR	36
37	EMS				12	20	3	3	20	12				EMS	38
39	--					--		--	--					--	40
41	--					--		--	--					--	42
SUBTOTAL		3,973	2,738	2,932							15,319	14,760	15,360	SUBTOTAL	
TOTAL PHASE A - VA		19,292	LOAD	CONN. VA	DF	LOAD		CONN. VA	DF						
AMPS		161	COOLING	44,280	1.00	REFRIG			1.00						
TOTAL PHASE B - VA		17,498	HEATING	1,650	0	SIGN/DISPLAY			1.25						
AMPS		146	LIGHTING	7,837	1.25	KITCHEN			1.00						
TOTAL PHASE C - VA		18,292	RECEPTACLES	1,200	1.00	EXISTING		114	1.00						
AMPS		152	MOTORS		1.00	LARGE MOTOR			1.25						
TOTAL PNLBD - VA		55,081	SUPP HEAT		1.00	SHOW WIND			1.25						
AMPS		153	MISC EQUIP		1.00	LTG TRACK		1.00	154.00 A						