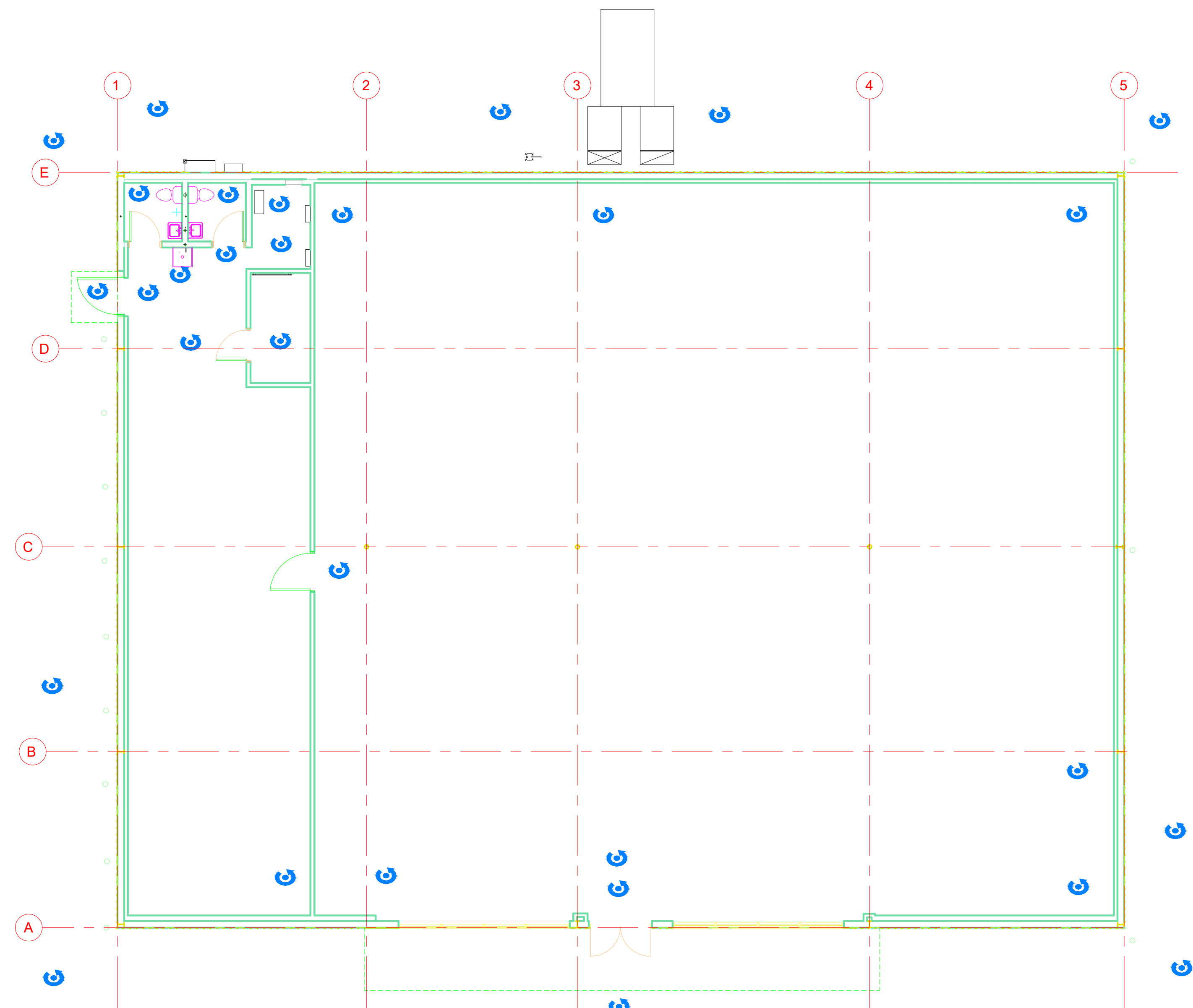


2 EXISTING 360 ROOF PLAN
1/8" = 1'-0"



1 EXISTING 360 FLOOR PLAN
1/8" = 1'-0"



20210223_185130154_iOS



20210223_201056796_iOS



20210223_201059798_iOS



20210223_201101433_iOS



20210223_201120314_iOS



20210223_201122215_iOS



20210223_201127052_iOS



20210223_201128554_iOS



20210223_201130322_iOS



20210223_201132090_iOS



20210223_201133758_iOS



20210223_201700035_iOS



20210223_201940187_IOS



20210223_202439533_iOS



20210223_202442602_iOS



20210223_202446141_iOS



20210223_202449343_iOS



20210223_165023317_iOS



down
Thank You for Your
Assistance

20210223_165027269_iOS



20210223_165029254



20210223_165031571_iOS



20210223_165036792_iOS



20210223_165053199_iOS



20210223_165057994_iOS



20210223_170736544_iOS



20210223_170738084_iOS



20210223_170742621_iOS



EMPLOYEES ONLY

All Employees
Must Wash Hands

Please do not
flush trash or
feminine products
down the toilet.
Thank You for Your
Assistance

20210223_170747886_iOS



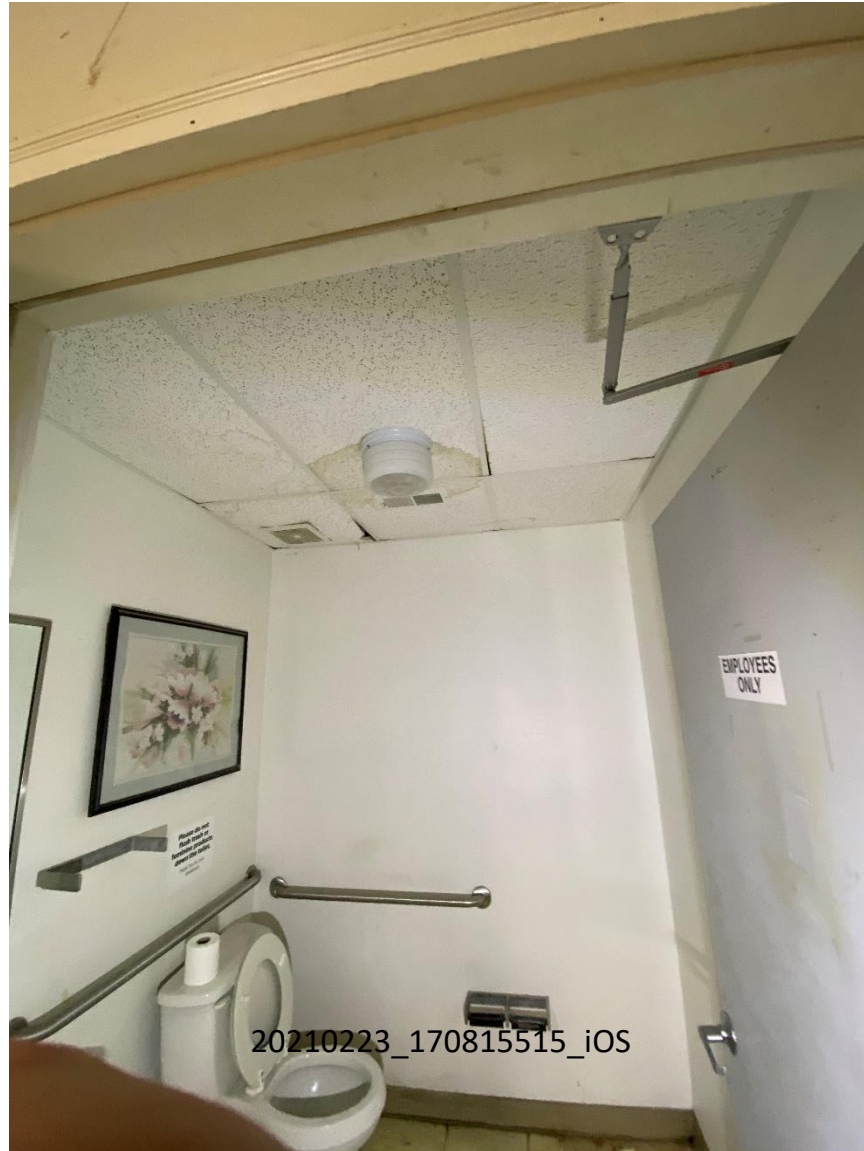
20210223_170800897_iOS



20210223_170805267_iOS



20210223_170808513_iOS





20210223_170819738_iOS



20210223_171109617_iOS



20210223_171111787_iOS

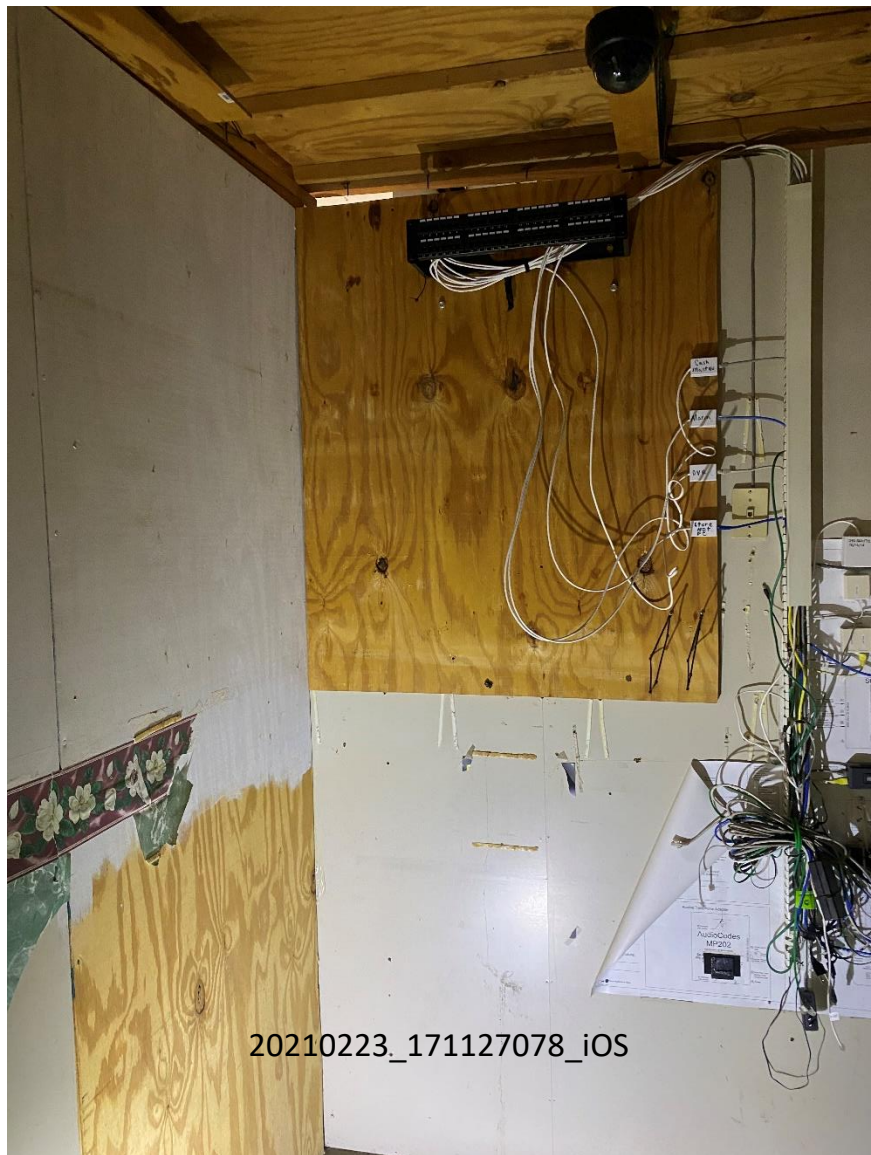


20210223_171114503_iOS



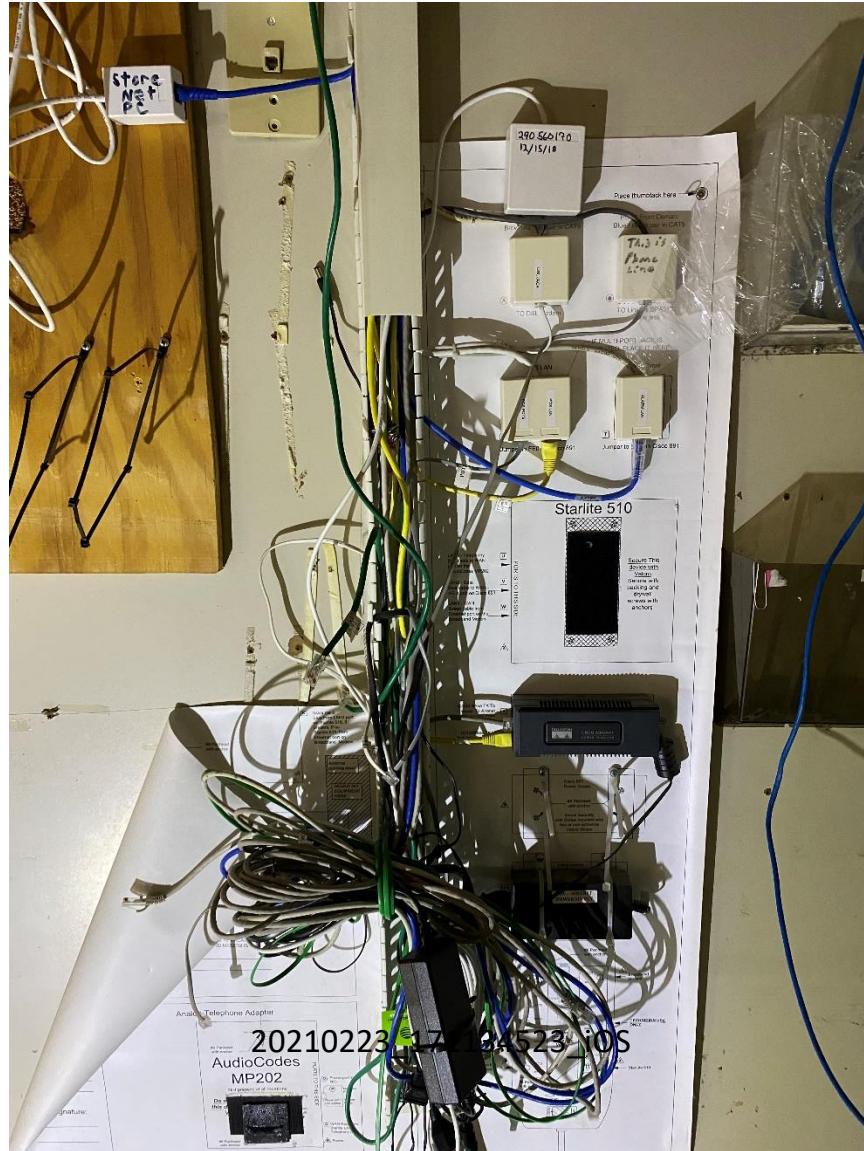
20210223_171116597_iOS





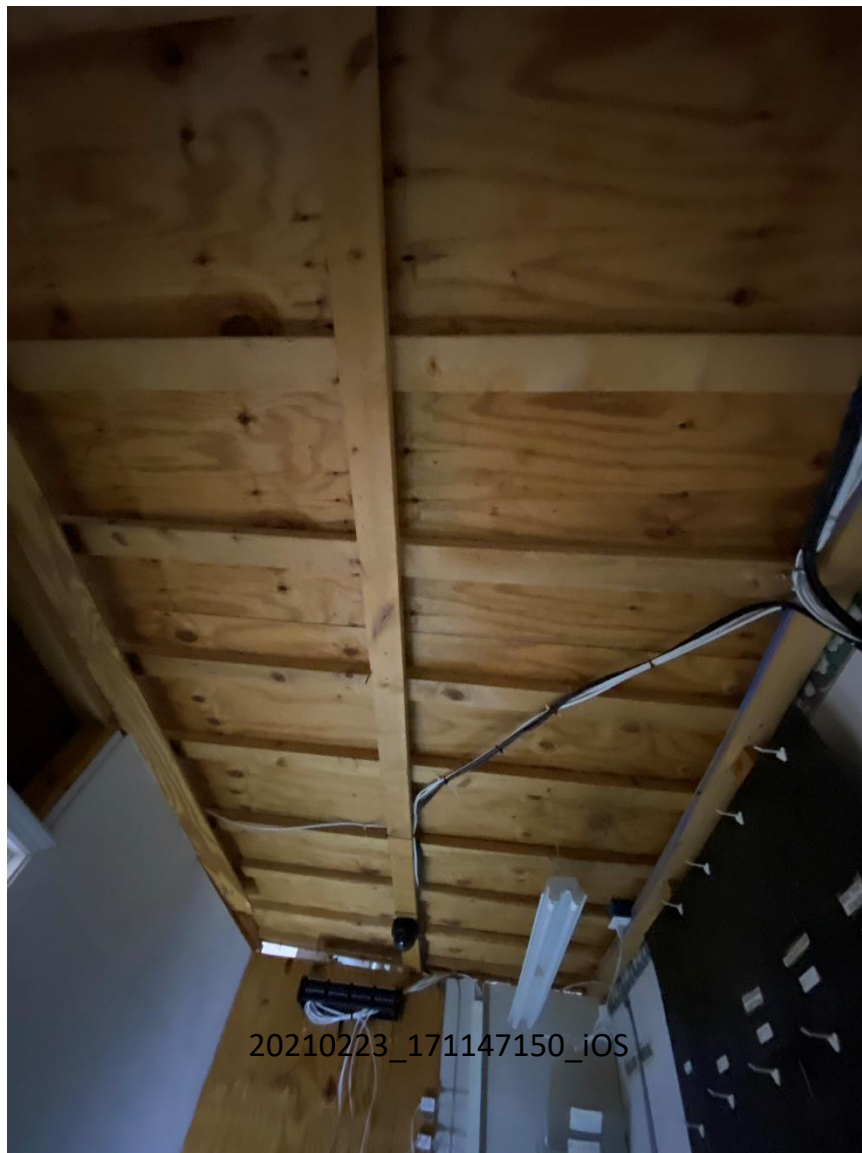
20210223_171127078_iOS







20210223_171140134_iOS



20210223_171147150_iOS



20210223_171202003_iOS



20210223_171206513_iOS



20210223_171215205_iOS



20210223_171218662_iOS



20210223_171228300_iOS



20210223_171229917_iOS



20210223_171231701_iOS



20210223_171233351_iOS



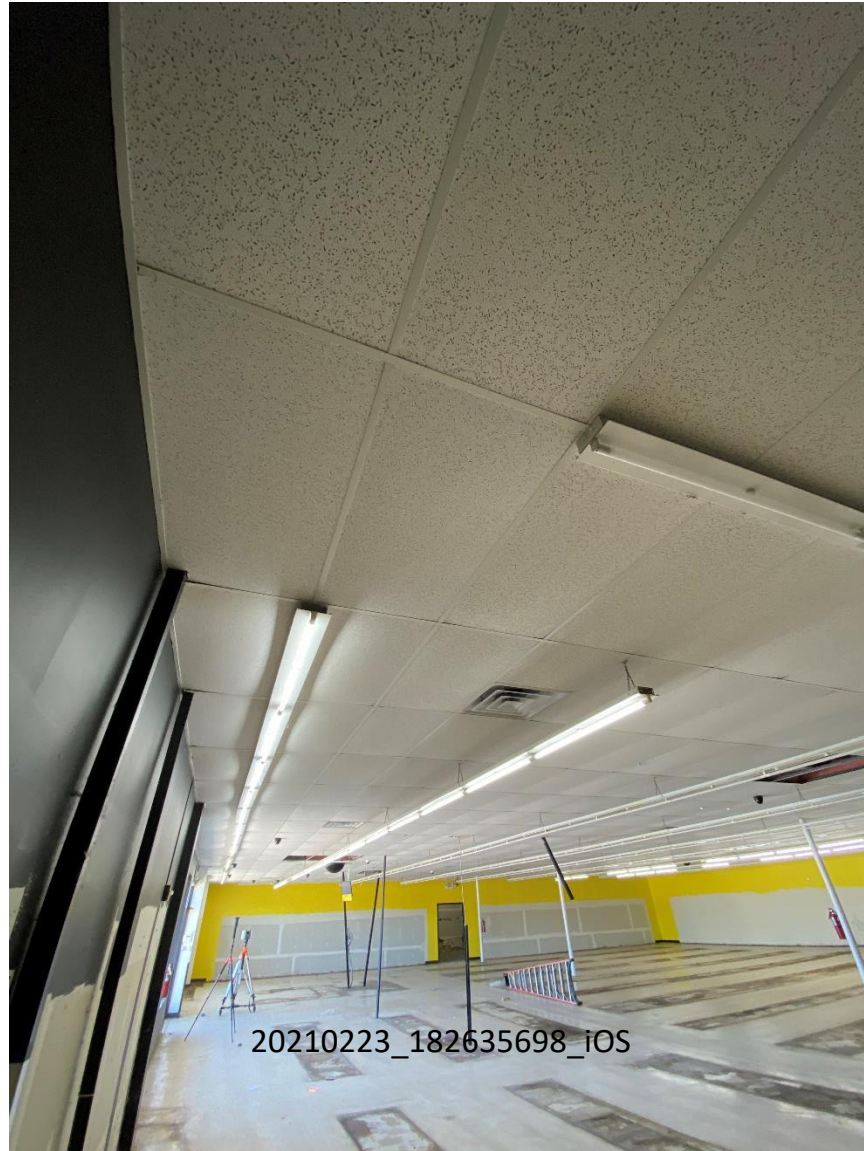
20210223_171234969_iOS



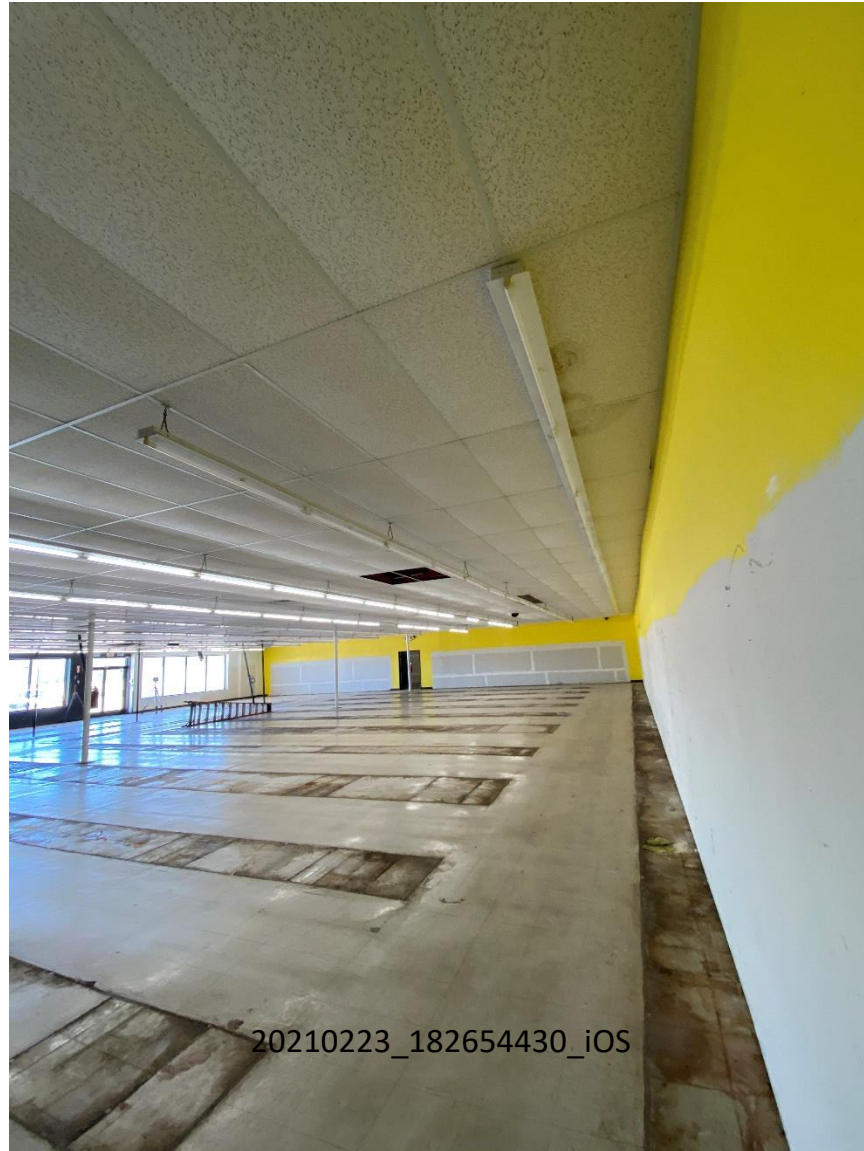
20210223_171236419_iOS



20210223_182632663_iOS



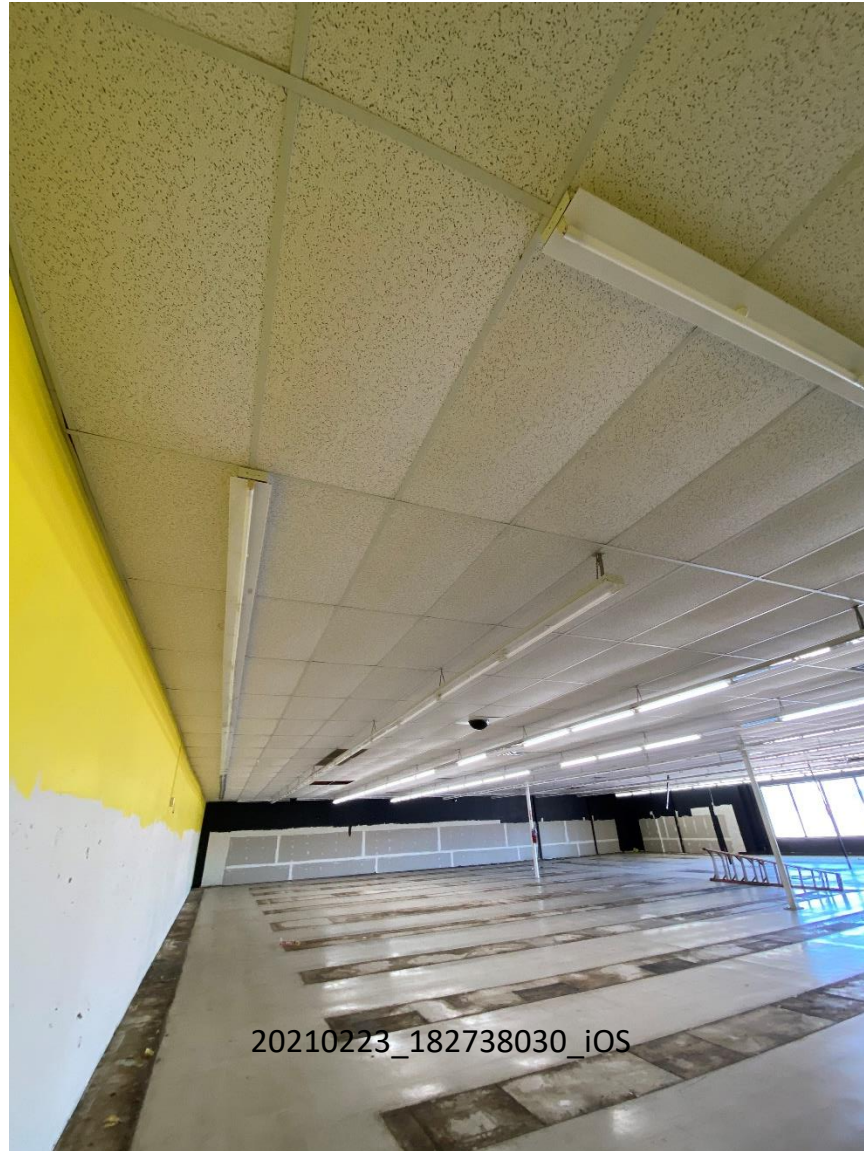
20210223_182635698_iOS



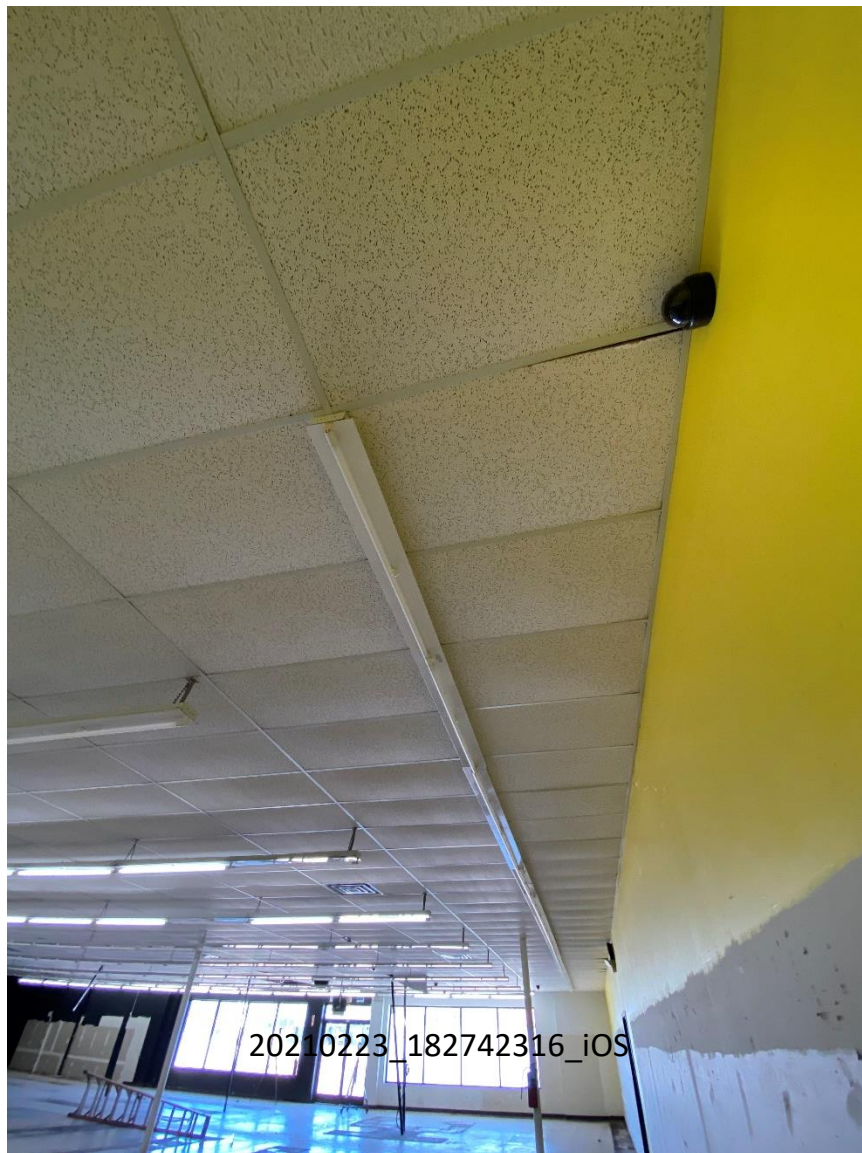
20210223_182654430_iOS

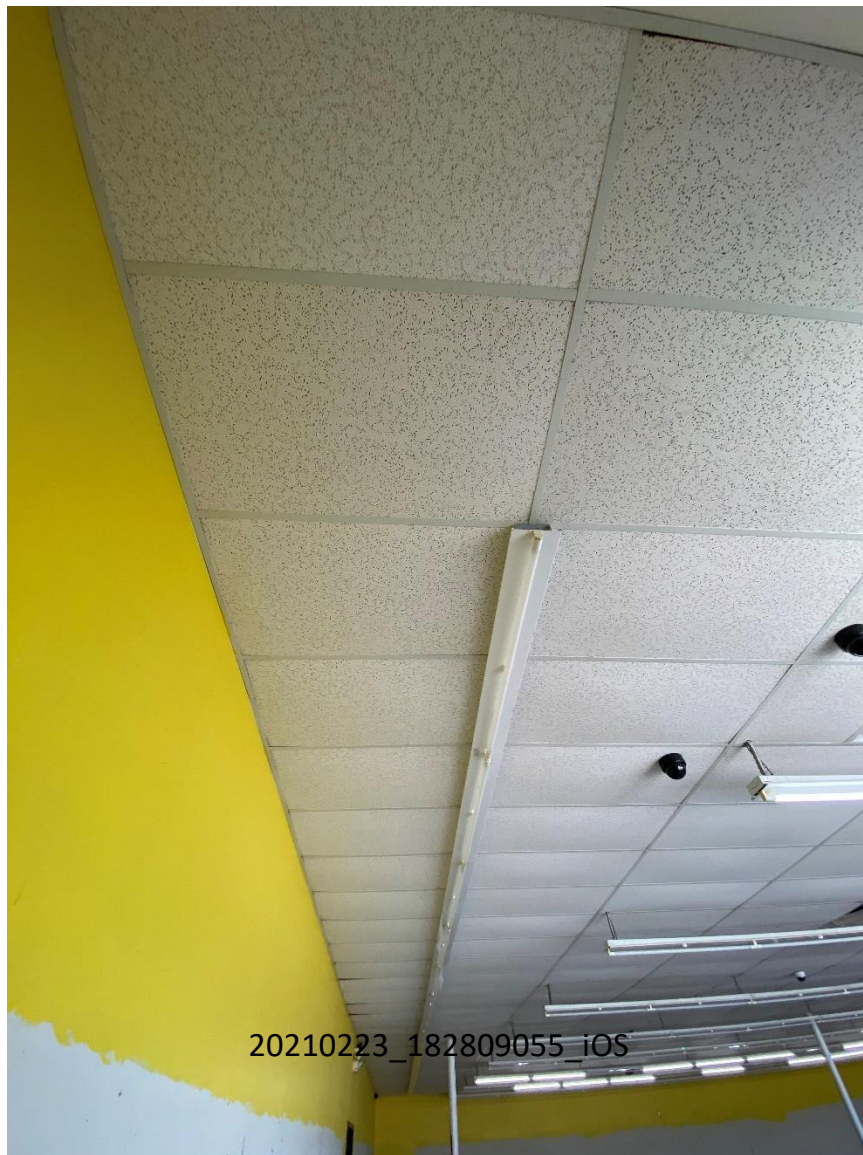


20210223_182656548_iOS



20210223_182738030_iOS





20210223_182809055 iOS



20210223_182814209_iOS



20210223_201056796_iOS



20210223_201059798_iOS



20210223_201101433_iOS



20210223_201127052_iOS



20210223_201128554_iOS



20210223_201130322_iOS



20210223_201132090_iOS



20210223_201133758_iOS



20210223_201940187_IOS



20210223_202446141_iOS



20210223_202449343_iOS



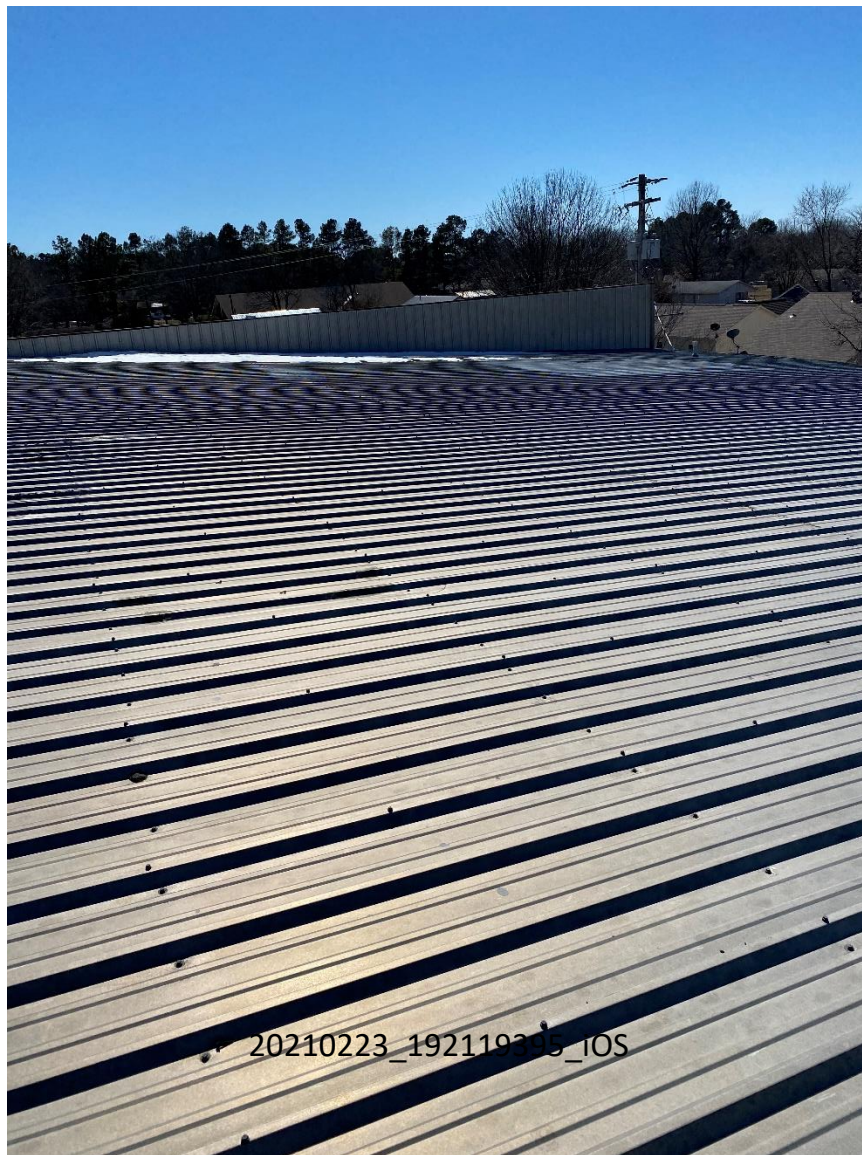
20210223_192112115_iOS



20210223_192115218_IOS



20210223_192117223_iOS



20210223_192119305_IOS



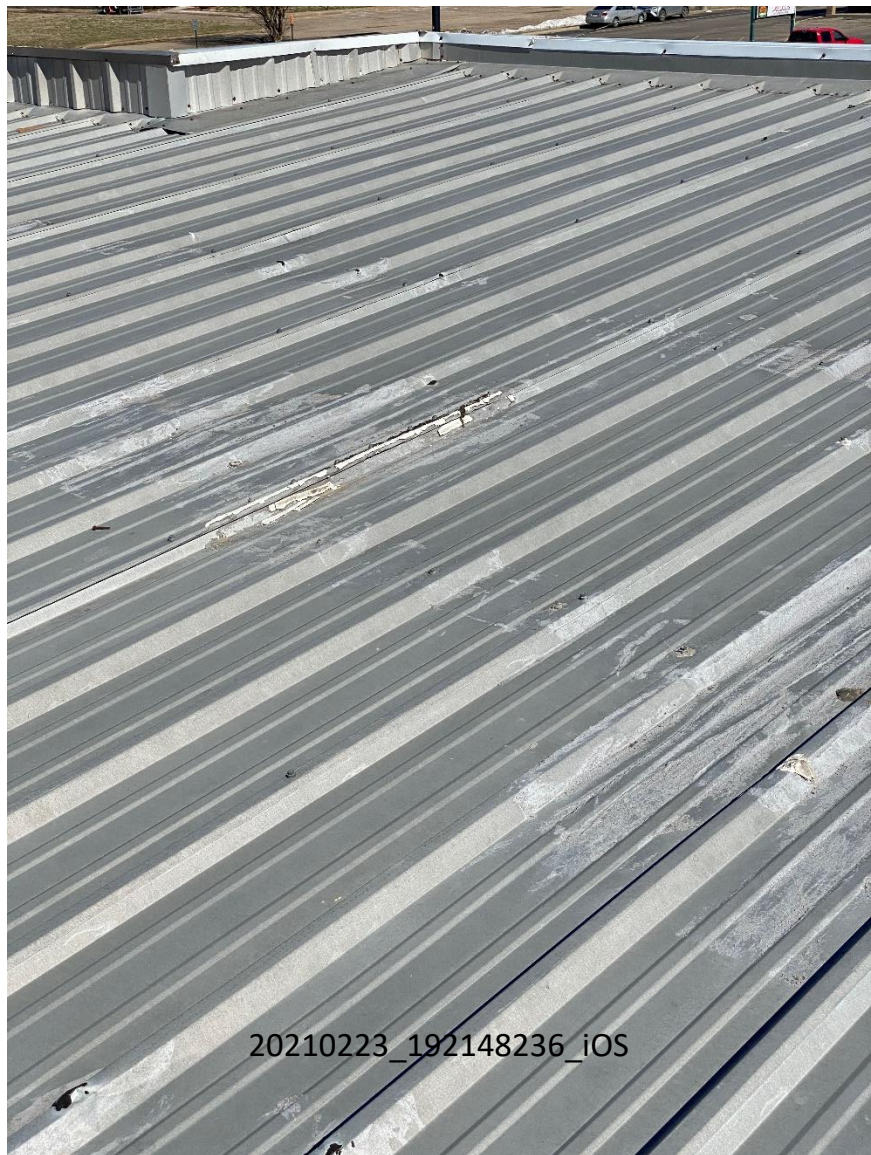
20210223_192121700_iOS



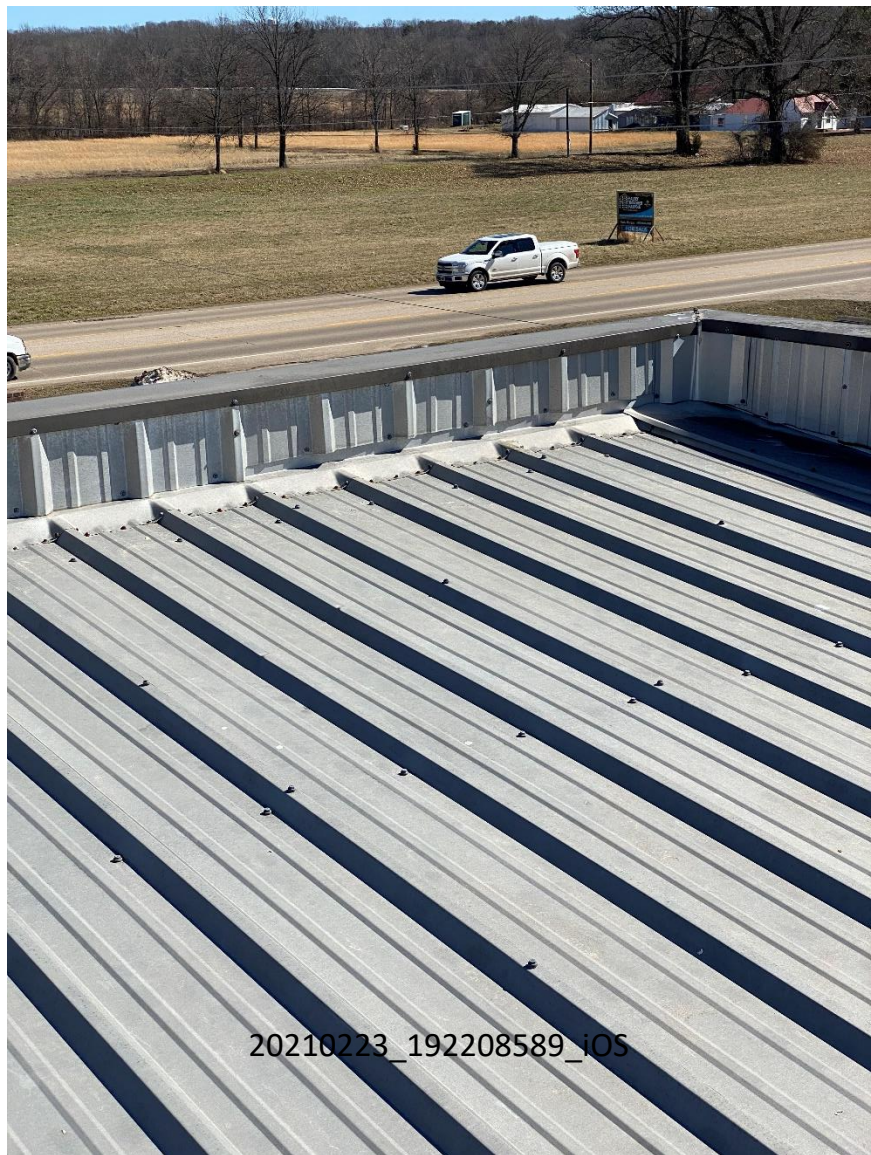
20210223_192141362_iOS



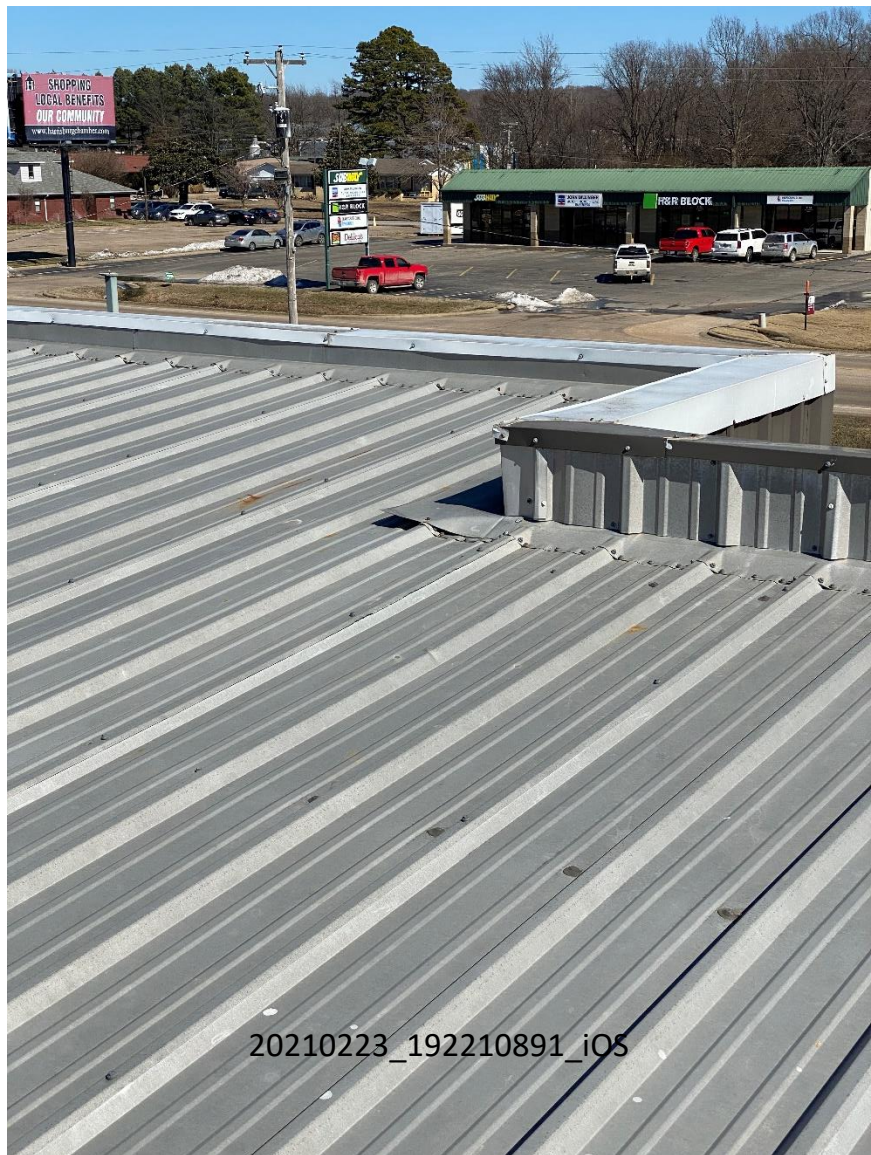
20210223_192146167_IOS



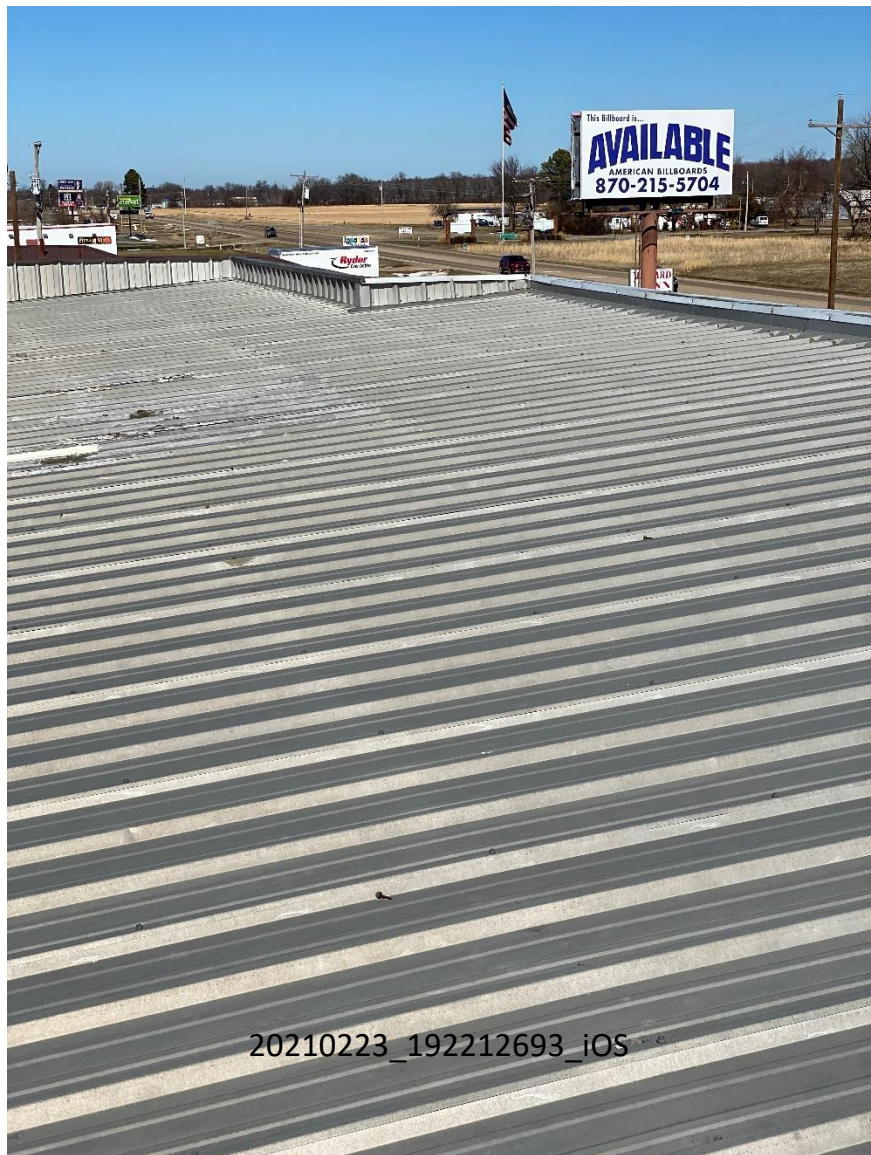
20210223_192148236_iOS



20210223_192208589_iOS



20210223_192210891_iOS



20210223_192212693_iOS



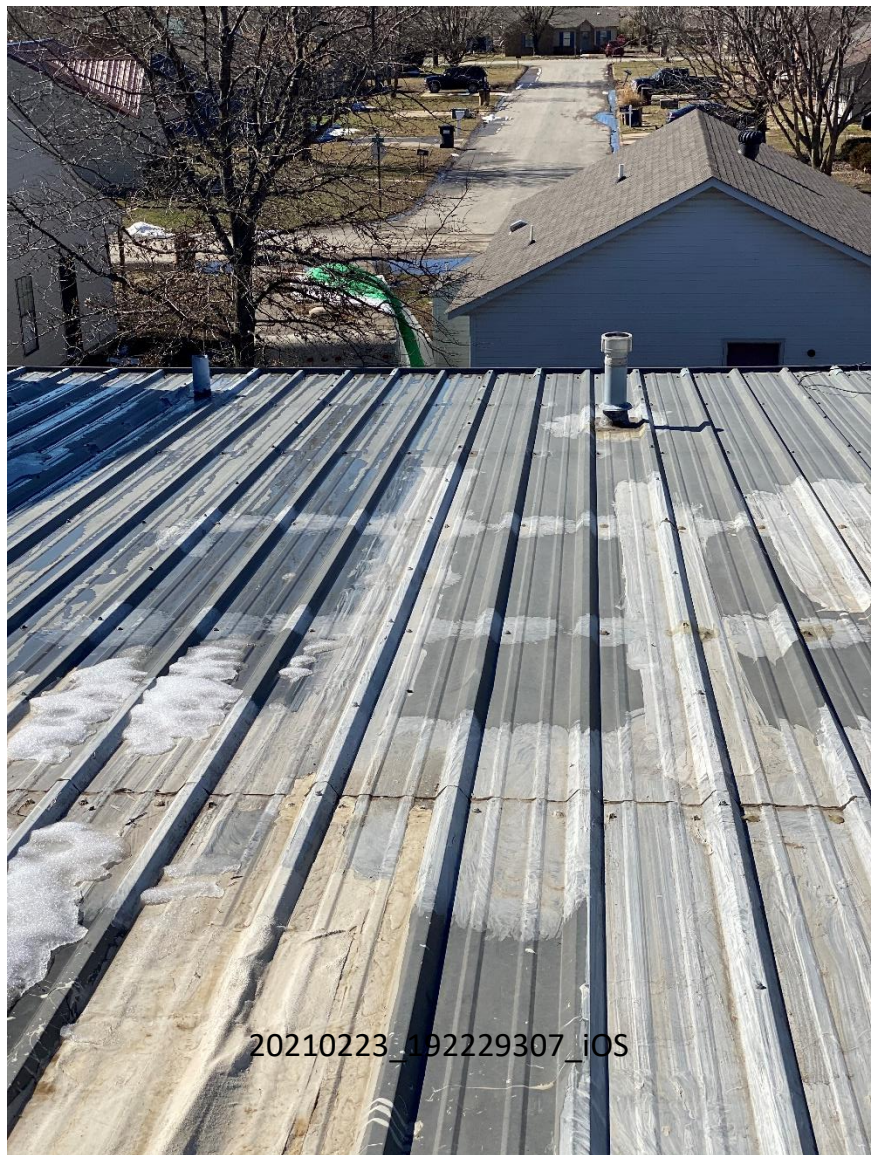
20210223_192214394_iOS



20210223_192216029_iOS



20210223_192217664_iOS



20210223_192229307_iOS



20210223_192231142_iOS



20210223_170826206_iOS



H
20
KSH
KLR
0
KSH
KLR

20210223 0842619_OS



20210228_170851691_iOS



20210223_170907679_



20210223_170916899_iOS



20210223_170932320_iOS

MP2588B-F

Made in U.S.A.
Farmville, CT 06032

GRANI

TIGHTENING TORQUE

Apply to the indicated and equipment ground terminals.
See instructions for other tightening torque.

Screw	Screw		Terminal box screw	
	Min	Max	Min	Max
1/4-20	35	55	116	120
5/16-18	40	60	114	200
3/8-16	45	65		
1/2-13	45	65		

EQUIPMENT GROUND WIRE SIZE (AWG)

Maximum multiple wires (P, white) size

Min Size	Max Size	Min	Max	Stranded	Al
14	12	(1) 14	(1) 12	(1) 10	(1) 10
12	10	(1) 12	(1) 10	(1) 8.4	(1) 8.4
10	8	(1) 10	(1) 8	(1) 6.4	(1) 6.4
8	6	(1) 8	(1) 6	(1) 4.8	(1) 4.8
6	4	(1) 6	(1) 4	(1) 3.2	(1) 3.2
4	2	(1) 4	(1) 2	(1) 1.6	(1) 1.6

NEUTRAL WIRE SIZE (AWG)

Min Size	Max Size	Min	Max	Stranded	Al
14	12	(1) 14	(1) 12	(1) 10	(1) 10
12	10	(1) 12	(1) 10	(1) 8	(1) 8
10	8	(1) 10	(1) 8	(1) 6	(1) 6
8	6	(1) 8	(1) 6	(1) 4	(1) 4
6	4	(1) 6	(1) 4	(1) 3	(1) 3
4	2	(1) 4	(1) 2	(1) 1.5	(1) 1.5

REPLACEMENT PARTS

Frame: 1142C
Insulator: 341026203

Alternate Main Rating: 100 Maximum, 200/120VAC, 3-Phase, 4-Wire
See main circuit breaker rating.

Alt. Amps: 14.5 Ca, 19.2 Al
50-100 Amp: 14.5 Ca, 19.2 Al
75-100 Amp: 14.5 Ca, 19.2 Al

Main ckt. br. remains req'd. THULBK
Suitable for use as service equipment.

When used as service equipment, all ungrounded terminals may be used for terminating equipment ground wires.



DANGER

Hazard of electrical shock or burn. Turn power before working on this equipment.



Alternate voltage rating 120/240, 3-phase, 4-wire
is only 240VAC circuit breaker on 240VAC circuit or circuit breaker in accordance with the instructions.

1	42	2	Stove Lts	41
3	40	4	Stove Lts	39
5	38	6	Stove Lts	37
7	36	8	EXIT Lts	35
9	34	10	Cash Register	33
11	32	12	Cash Register	31
13	30	14	Outside Lts	29
15	28	16	AC unit	27
17	26	18	AC unit	25
19	24	20	AC unit	23
21	22	22		21
23	20	24		19
25	18	26		17
27	16	28		15
29	14	30		13
31	12	32		11
33	10	34		9
35	8	36		7
37	6	38		5
39	4	40		3
41	2	42		1

MASTER REGISTER
REMOVED REGISTER

New coolers removed
New switches

LINE BOX

20210223 170937967 iOS

UL Underwriters Laboratories Inc. CLASS CTL ENCLOSED PANELBOARD No. FP 862217

NP200000-F
Made in U.S.A. Plainville, CT 06062

PowerMark Plus™ Load Center

207

Other breakers
Cat. No. TL42-420C
Use only GE type breakers:
THXL, THXL, TDXL, THXL, OR TXDL

MAIN RATING
STANDARD: 200V/120VAC, 3-Phase, 4-Wire
200 Amp Maximum
100 Amp max when used in New York City, N.Y.
OPTIONAL: 240VAC, 3-Phase, 3-Wire
For this system neutral is not used and only breakers rated at 240VAC are to be used.

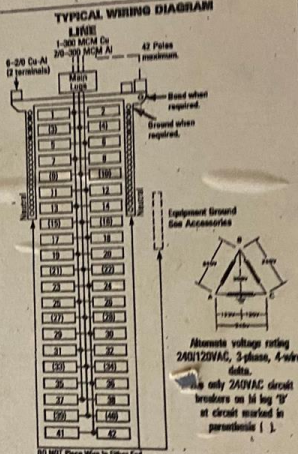
WARNING: Use only with GE type breakers, use of other circuit breakers voids the warranty, may void the UL Listing and could result in property loss or personal injury. The circuit breakers in this box have been selected to protect the wiring. To avoid damage and loss of protection, do not replace with higher ampere rated breakers. If changes are necessary call a qualified electrical contractor.

POSS-TRIP indication on GE type circuit breakers:
Green indicates in "OFF" position
White indicates in "ON" position
Black indicates a tripped breaker

IF A BREAKER TRIPS: 1. Move handle to OFF position.
2. Move handle to ON position.

ACCESSORIES
Circuit directory: TM42
Equipment ground bar: TGL1, TGL2, TGL3, TGL4, TGL5, TGL20
Front filler plates: 3" width - TFF
1" width - TFFP1
Front sealing kit: TFS1
Door lock kit: TDL100
For bottom feed doors, rotate metric device 180° and if desired, replace door handle with TRL220 kit.

USE COPPER OR ALUMINUM WIRE
Use 80°C or 75°C impedance sized wire on line and neutral terminals. See circuit breakers for their wire temperature rating.



DO NOT Place Wires in Other End

Breaker Symbol	Breaker Fill
1	THXL
1	TDXL
1	TFFP1

ALTERNATE VOLTAGE RATING
240V/120VAC, 3-phase, 4-wire, delta.
Use only 240VAC circuit breakers on 4 leg "B" at circuit marked in parenthesis ().

TIGHTENING TORQUE
Applies to line, neutral and equipment ground terminals. See breakers for their tightening torque.

AWG Wire	Slotted screw		Internal bus screw	
	Min	Max	Min	Max
14-10	32	35	3/16	1/8
8	35	40	1/4	1/8
6-4	41	45		
2-2/0	45	50		

EQUIPMENT GROUND WIRE SIZE (A)
Maximum multiple wires (B), wire size

Wire Size	Cu	Al	Cu	Al
Large	(2) 14 (2) 12 (2) 10 (1) 8	(2) 12 (2) 10 (1) 8	(2) 10 (2) 10 (1) 8-4	(2) 10 (1) 8-4
Small	(2) 14 (1) 10-8	(2) 12 (1) 10-8	(2) 12 (1) 10-8	(2) 12 (1) 10-8

NEUTRAL WIRE SIZE (A/N/G)

Wire Size	Cu	Al	Cu	Al
Large	14-8	12-8	16-4	
Small	14-8	12-8	12-8	

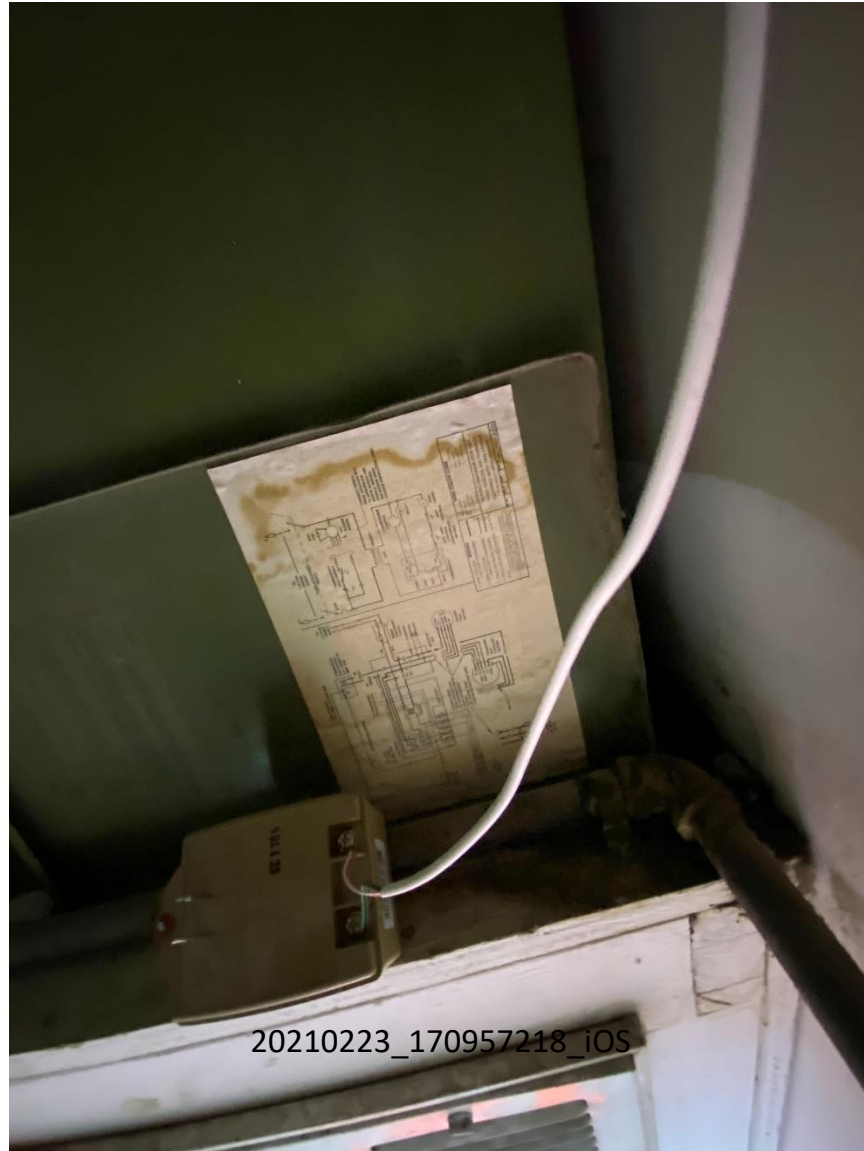
REPLACEMENT PARTS
Front: TL425
Interior: 243, 229, 2253

ALTERNATE MAIN RATING: 100 Maximum, 200V/120VAC, 3 phase.
See main circuit breaker ratings.
40 Amp: 14-8 Cu, 12-2 Al
50-60 Amp: 14-3 Cu, 12-2 Al
70-100 Amp: 8-1/8 Cu, 4-1/8 Al
Main cir. dir. retainer req'd: THXL2K.
Suitable for use as service equipment. When used as service equipment, all unswitched neutral may be used for terminating equipment ground.

ALUMINUM



20210223_170950279_iOS



20210223_170957218_iOS



20210223_171009522 JOS



20210223_171012657_10



20210223_171015513_iOS



20210223_201520243_iOS



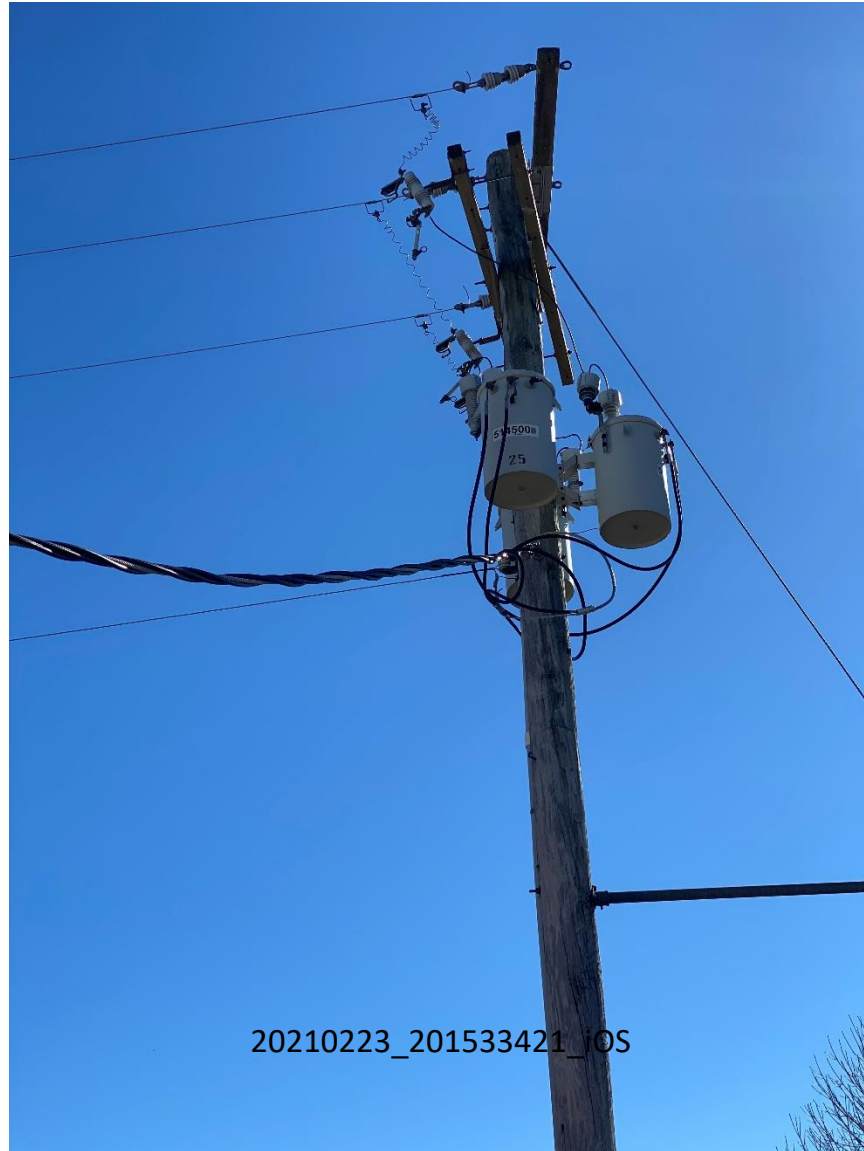
20210223_201522245_iOS



20210223_201528050_iOS



20210223_201530252_iOS



20210223_201533421 iOS



20210223_201546065_IOS



20210223_201555306_iOS



20210223_201557408 iOS



20210223_201608318_iDS



DANGER
Hazardous Voltage.
Will cause death, serious
injury or substantial
property damage.
Turn off power before the
equipment service marking, work.

Aclara
kv2c

OPTIONS	FS	VOLTAGE
MODEM	7.2	120V
OUTPUTS	7.2	240V
RECORDER	16.8	277V
RS	16.8	480V

TOU
KVA
KVAR
KWH
ONLY

0604
METER
READY
1116

ENERGY 3596650
KZD3596650K010359
METER S/N 72 754 735

PROG
#3
15 MIN

Entergy 9S/8S

Mult by 50 VTR _____ :1 CTR _____ :5
CL 20 120-480V 4W FM9S Kt 1.8
784X900073 50/60Hz CA 0.2 TA 2.5 Kh 1.8 TV 120

CAUTION
Please do not tamper with the meter.
Unauthorized tampering with the meter
may result in a fine and/or disconnection
of service. For more information,
contact your local utility.

20210223_201615424_iOS

ENTEL
MILBANK





20240223_201634314_08



20210223_201639317_105



20210223_201658434_iOS



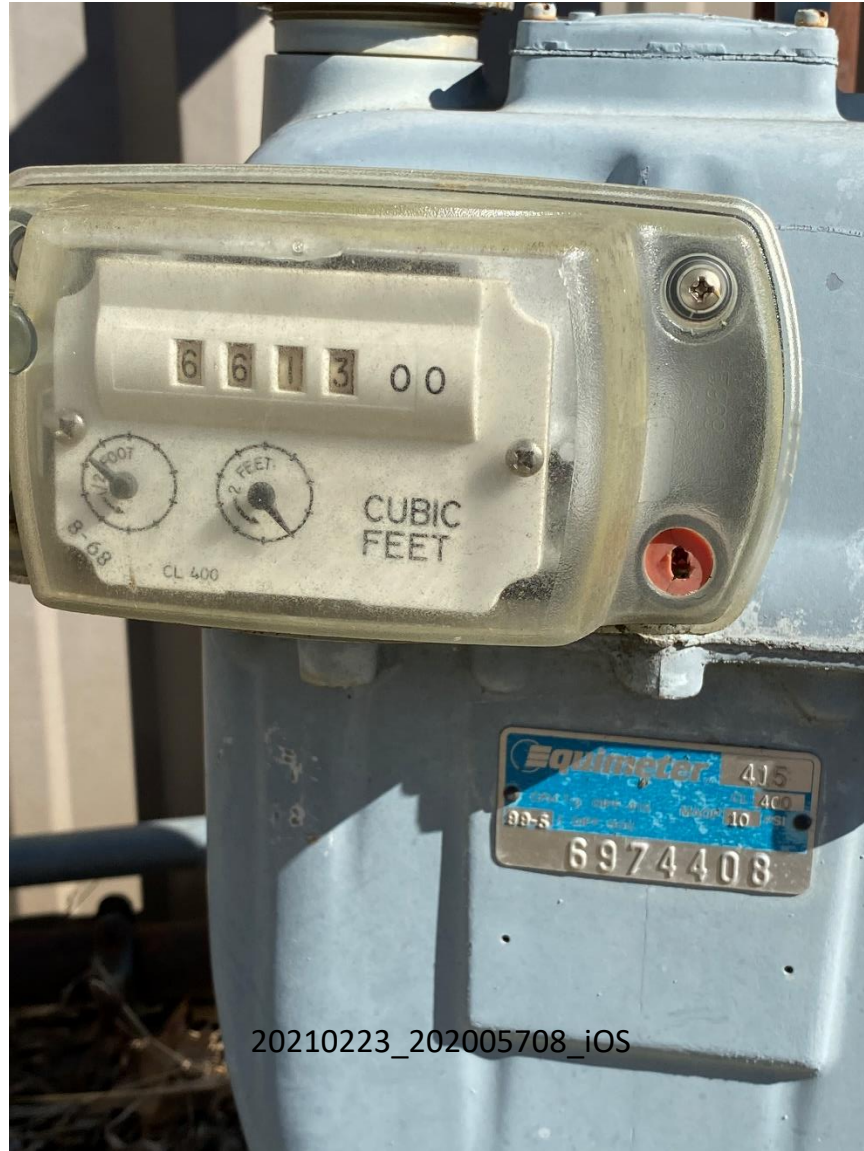
20210223_201942622_iOS



0210223_201952431_iOS



10223_201959470_iOS



20210223_202005708_iOS



20210223_202022392_iOS



20210223_202037638_iOS



20210223_202039640_iOS



20210223_202113469_iOS



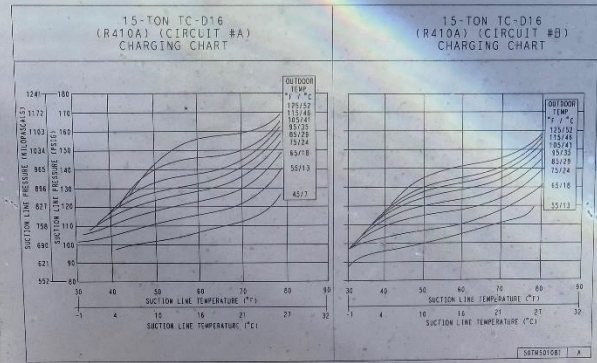
20210223_202123178 iOS



20210223_202127949_103



20210223_202203746 JOS



R-410A
Refrigerant

This system contains R-410A Refrigerant
and POE oil.

Refer to product literature before
Installing or Servicing this unit.

Ce système contient du réfrigérant R-410A et l'huile polyol ester.
Référer à la littérature pour ce produit avant l'installation ou
l'entretien de cette unité.

330377-101 REV. B

<p>⚠ AVERTISSEMENT</p> <p>Risque De Choc Électrique</p> <p>Peut entraîner des blessures ou la mort. Il faudra probablement avoir recours à plusieurs sectionneurs pour désactiver cet équipement. Mettre hors tension tous les sectionneurs à distance avant de procéder à l'entretien.</p> <p>Danger - Placez les mains dans le ventilateur pendant la marche.</p>		<p>⚠ WARNING</p> <p>Electric Shock Hazard</p> <p>Can cause injury or death. More than one disconnect switch may be required to de-energize this equipment. Open all remote disconnects before servicing.</p> <p>Hazardous moving part. Do not reach into fan while fan is operating.</p>
---	--	--

INTERNATIONAL COMFORT PRODUCTS, LLC
Levittown, PA 19074

MODEL: RGS180HFAA0AAA ---
SERIAL: P134904208
FACTORY CHARGED



	QTY	VOLTS AC	PH	FZ	PLA	LRA	REF SYSTEM	410A	TEST PRESSURE	GAGE
COMP A	1	208/230	3	60	25.0	164	16.15	lbs	7.3	kg
COMP B	1	208/230	3	60	25.0	164	16.15	lbs	7.3	kg
FAN MTR	QTY	VOLTS AC	PH	FZ	FLA	CHARGE SYSTEM PER INSTALLATION INSTRUCTIONS				
OUTDOOR	3	208/230	1	60	1.5	FOR OUTDOOR INSTALLATION ONLY				
INDOOR	1	208/230	3	60	8.4/8.3	COMBINATION COOLING AND HEATING UNIT				
RIR EXHUST	POWER SUPPLY									
COMBUST	1	208/230	1	60	0.48	208/230	3	60	253	187
OTHER	PERMISSIBLE VOLTAGE TO UNIT									

ACCESSORY POWER EXHAUST MOTOR	VOLTS	PH	HC	MINIMUM POWER EXHAUST FLA	MINIMUM CIRCUIT BREAKER AMP	MAX FUSE OR MCB	OVERCURRENT PROTECTION DEVICE	MAXIMUM UNIT DISCONNECT	MINIMUM UNIT DISCONNECT
CRPWREXH						70/70	80/80	-	72/72
NOTE						73/73	80/80	-	77/77
080A, 082A	208/230	1	60	3.8					

CONTROL PANEL SCRR 5KA RMS SYMMETRICAL VOLTAGE 253 MAX
MINIMUM CLEARANCE TO COMBUSTIBLE MATERIALS

	TOP	BOTTOM	SIDES	REAR
DOWN SUPPLY	0 IN 0 MM	1 IN 25 MM	0 IN 0 MM	48 IN 1219 MM
SIDE SUPPLY	0 IN 0 MM	1 IN 25 MM	0 IN 0 MM	48 IN 1219 MM

* FOR INSTALLATION ON COMBUSTIBLE FLOORING OF CLASS A, B, OR C RHO/FI MATERIAL
** 1/2 (12.7) INCHES (45.7mm) WITH ACCESSORY FLEX DUCT AND JOINT SEALANT
DEVICE CERTIFIED AS A POWER AIR FURNACE WITH ACCESSORIES THAT APPROVES FOR RESIDENTIAL USE TO 40° F AMBIENT PER ANSI Z21.47 2006 SECTION 1.2.2 & ITEM L11 * FOR INSTALLATION ABOVE
20000 BTU/HOUR INPUT RATING PLATE IS DE FACTO

AIR TEMP RISE	MAX EXTERNAL STATIC PRESSURE	DESIGNED MAXIMUM OUTLET AIR TEMPERATURE
20 - 60 °F	1.2" w.c.	190
11.1 - 33.3 °C	0.3" w.c.	87.8

	INPUT MIN	INPUT MAX	OUTPUT CAP	SEMI-CONDUCTOR EFFICIENCY	EQUIPMENT EFFICIENCY
BTU/H	192000	240000	195000	81.0	NATURAL GAS
kW	56.3	70.3	57.1		
GAS SUPPLY PRESSURE	13" w.c.	3.24" w.c.	MAX 5" w.c.	1.25" w.c.	
MANIFOLD PRESSURE	3.5" w.c.	0.87" w.c.	MAX 2" w.c.	0.5" w.c.	



	CAPACITY (BTU/H)	CAPACITY (kW)	EER	COP
COOLING	174000	50.9	10.8	
HP HEATING				

THIS EQUIPMENT COMPLIES WITH THE REQUIREMENTS OF ASHRAE 90.1



20210223_202301880_ios
EQUIPMENT IDENTIFICATION NUMBER: 20210223_202301880_ios
DATE OF MANUFACTURE: 04-2023



20210223_20230670_IOS



20210223_20232072_008



20210223_202323573 iOS