

ADDENDUM NO. 6

New Regional Office for
First Community Bank
HWY. 62/412 AND BIG CREEK ROAD
Jonesboro, AR

Roark · Perkins · Perry · Yelvington
Architects
713 W. 2nd Street
Little Rock, AR 72201
501-372-0272

Project #1711

February 6, 2023

This addendum forms a part of the Contract Documents and modifies the original Bidding Documents dated December 7, 2022 as noted below. Acknowledge receipt of this Addendum in the space provided on the Bid Form. Failure to do so may subject the Bidder to disqualification.

This addendum consists of 1 page, and 2 reissued Sheets, C1.1 and A1.0.

I. CHANGES TO PROJECT MANUAL

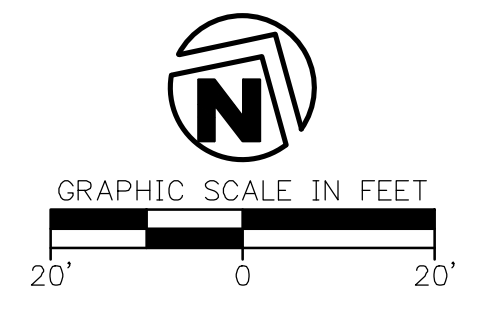
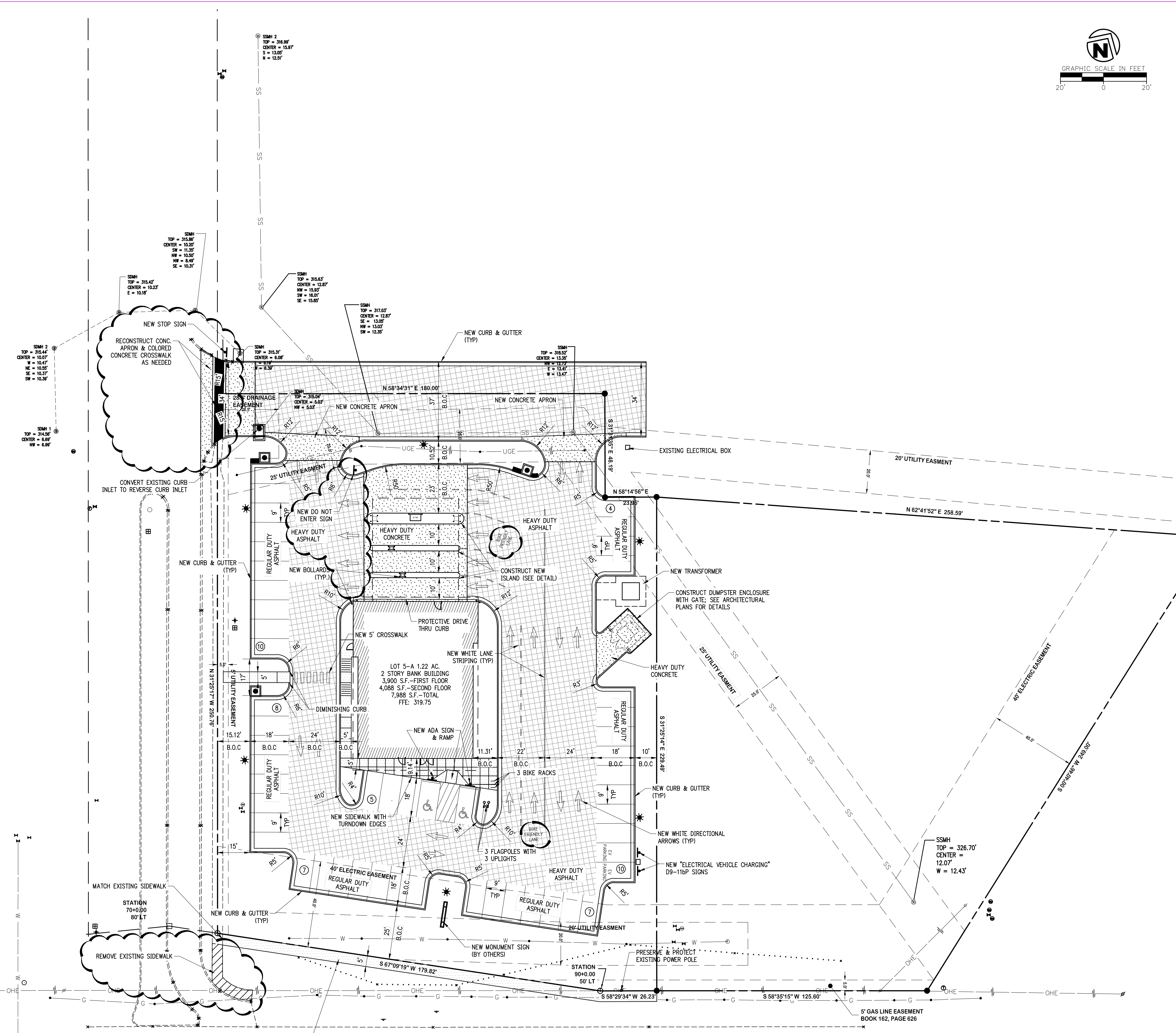
- A. Northwest Controls and Engineer, and Schneider Electric Controls are acceptable HVAC Controls manufacturers.

II. CHANGES TO DRAWINGS

- A. Sheets C1.1 and A1.0: Refer to attached reissued Sheets for the following revisions:
 - 1. Remove existing sidewalk as shown. Add pavement markings and signage as shown. Included in base bid provisions for repairing or replacing the existing concrete apron and colored concrete crosswalk at Chancery Lane.
- B. Sheet A4.3:
 - 1. Refer to detail B/A4.3: All flashing associated with metal wall panels, including the parapet cap, to be by metal panel manufacturer detail B/A4.3 Other flashing to match metal wall panel Champagne color.

END OF ADDENDUM

8/2/2021 12:35:14 PM S:\1088 FCB Conway\Rev\1088FCB Conway.rvt



LEGEND (EXISTING SYMBOLS)

SYMBOLS	LINEWORK
FOUND IRON PIN	EASEMENT
LIGHT POLE	CURB
POWER POLE	INTERMEDIATE CONTOUR
TELEPHONE PEDESTAL	INDEX CONTOUR
TV PEDESTAL	SANITARY SEWER LINE
MANHOLE	GAS VALVE
SANITARY SEWER CLEANOUT	GAS METER
GAS METER	GAS VALVE
GAS VALVE	STORM SEWER PIPE
STORM SEWER PIPE	DOWN CUI
DOWN CUI	WATER VALVE
WATER VALVE	FIRE HYDRANT ASSEMBLY
FIRE HYDRANT ASSEMBLY	AIR RELEASE VALVE
AIR RELEASE VALVE	FIRE DEPARTMENT CONNECTION
FIRE DEPARTMENT CONNECTION	WATER METER
WATER METER	SPRINKLER HEAD
SPRINKLER HEAD	ELECTRIC PEDESTAL
ELECTRIC PEDESTAL	GRATED INLET
GRATED INLET	DROP INLET
DROP INLET	TREE
TREE	TREE TO BE REMOVED

LEGEND (CONSTRUCT)

SYMBOLS	LINEWORK
SET IRON PIN	EASEMENT
LIGHT POLE	CURB
POWER POLE	INTERMEDIATE CONTOUR
TELEPHONE PEDESTAL	INDEX CONTOUR
TV PEDESTAL	SANITARY SEWER LINE
MANHOLE	GAS VALVE
SANITARY SEWER CLEANOUT	GAS METER
GAS METER	GAS VALVE
GAS VALVE	STORM SEWER PIPE
STORM SEWER PIPE	STRUCTURE NUMBER
STRUCTURE NUMBER	WATER VALVE
WATER VALVE	FIRE HYDRANT ASSEMBLY
FIRE HYDRANT ASSEMBLY	AIR RELEASE VALVE
AIR RELEASE VALVE	FIRE DEPARTMENT CONNECTION
FIRE DEPARTMENT CONNECTION	WATER METER
WATER METER	BACK FLOW PREVENTER
BACK FLOW PREVENTER	REDUCER
REDUCER	RECTANGULAR DROP INLET, GRATED INLET OR JUNCTION BOX (SPECIFY ON PLAN SHEET)
RECTANGULAR DROP INLET, GRATED INLET OR JUNCTION BOX (SPECIFY ON PLAN SHEET)	CIRCULAR DROP INLET, GRATED INLET OR JUNCTION BOX (SPECIFY ON PLAN SHEET)

PARKING

STANDARD PARKING SPACES	44
ACCESSIBLE PARKING SPACES	2
TOTAL PARKING SPACES	46

- SITE NOTES**
- THE DESIGN, INSPECTION, AND CERTIFICATION OF ANY RETAINING WALL SHOWN OR REFERENCED HEREIN, INCLUDING BUT NOT LIMITED TO, SEGMENTAL RETAINING WALLS, MASS GRAVITY WALLS, CASHION WALLS, ETC., GREATER THAN FORTY-EIGHT INCHES IN HEIGHT, SHALL BE BY OTHERS. ANY RETAINING WALL DATA SHOWN OR REFERENCED HEREIN SHALL BE FOR COORDINATION OF THE WALL LOCATION AND ELEVATIONS ONLY.
 - ALL WORK AND MATERIALS SHALL COMPLY WITH ALL CITY/COUNTY/STATE/FEDERAL REGULATIONS AND CODES AND OSHA STANDARDS.
 - CONTRACTOR SHALL REFER TO ARCHITECTURAL PLANS FOR EXACT LOCATIONS AND DIMENSIONS OF VESTIBULES, SLOPE PAVING, SIDEWALKS, EXIT PORCHES, TRUCK DOCKS, PRECISE BUILDING DIMENSIONS AND EXACT UTILITY ENTRANCE LOCATIONS.
 - ALL CURB DIMENSIONS AND RADII ARE TO FACE OF CURB UNLESS OTHERWISE NOTED.
 - ALL PAVEMENT MARKINGS DIMENSIONS FACE OF CURB UNLESS OTHERWISE NOTED.
 - ALL WORK SHALL BE DONE IN STRICT ACCORDANCE WITH THE PROJECT SPECIFICATIONS.
 - ALL CURB/SIDEWALK/HANDICAP RAMP DESIGNS SHALL CONFORM TO ADA STANDARDS OR LOCAL RESTRICTIVE CODES, WHICHEVER IS MORE RESTRICTIVE.
 - CONTRACTOR SHALL ENSURE ALL NECESSARY PERMITS ARE OBTAINED PRIOR TO CONSTRUCTION START.
 - CONTRACTOR SHALL MATCH NEW CURB AND GUTTER, CONCRETE, AND PAVEMENT TO EXISTING IN GRADE AND ALIGNMENT.
 - CONTRACTOR SHALL MAINTAIN ALL EXISTING PARKING, SIDEWALKS, DRIVES, ETC. CLEAR AND FREE FROM ANY CONSTRUCTION ACTIVITY AND/OR MATERIAL TO ENSURE EASY AND SAFE PEDESTRIAN AND VEHICULAR TRAFFIC TO AND FROM THE SITE.

ROARK PERKINS PERRY YELVINGTON
ARCHITECTURE - INTERIOR DESIGN
LITTLE ROCK, AR 72091-2987
713 W. SECOND STREET
501.372.8872

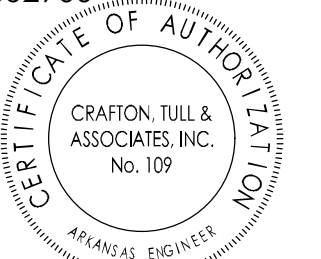
A New Branch Office for
First Community Bank
GREENSBORO VILLAGE
Jonesboro Arkansas



No.	Revision	Date
ADD 04	1/27/23	
ADD 06	2/3/23	

SITE PLAN

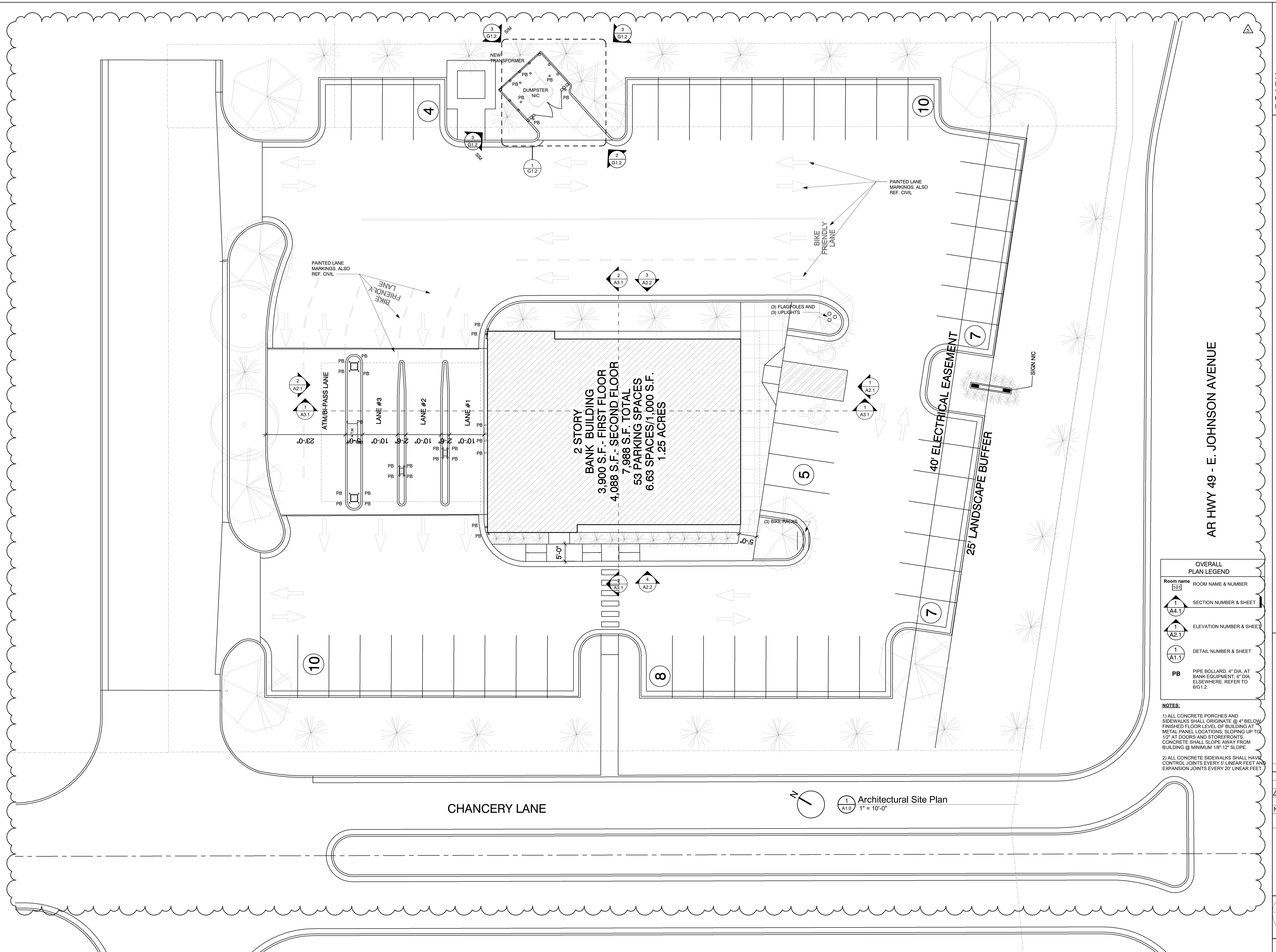
10825 Financial Centre Parkway, Suite 300
Little Rock, Arkansas 72211
Crafton Tull
engineering | surveying
501.664.3245 | 501.664.6704 | www.craftontull.com
CTA PROJECT #: 22802900



12-07-22	1711
DATE	JOB NO.
C1.1 R5 12	12
SHEET	OF

Arkansas One Call
811
Know what's below.
Call before you dig.

DRAWINGS, WRITTEN MATERIAL, AND DESIGN CONCEPTS SHALL NOT BE USED OR REPRODUCED IN WHOLE OR IN PART IN ANY FORM WITHOUT PRIOR CONSENT OF RPPY ARCHITECTS. DO NOT SCALE DRAWINGS. USE GIVEN DIMENSIONS ONLY. IF NOT SHOWN, VERIFY DIMENSIONS WITH THE ARCHITECT. CONTRACTOR SHALL CHECK AND VERIFY ALL DIMENSIONS AND CONDITIONS AT JOB SITE.



2 STORY
BANK BUILDING
3,900 S.F. - FIRST FLOOR
4,088 S.F. - SECOND FLOOR
7,988 S.F. TOTAL
53 PARKING SPACES
6.63 SPACES/1,000 S.F.
1.25 ACRES

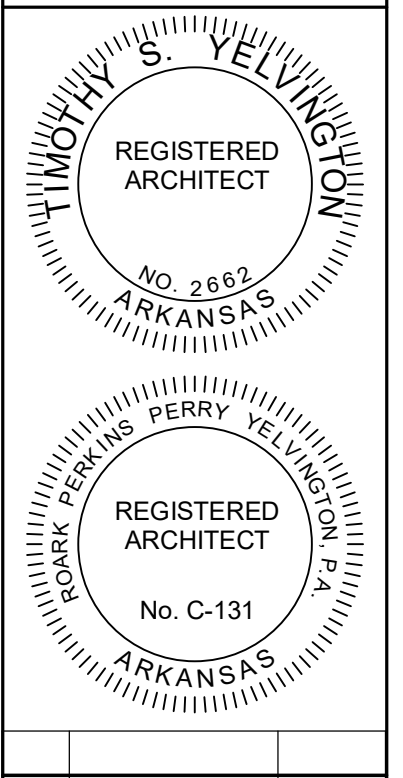
CHANCERY LANE

1 Architectural Site Plan
1" = 10'-0"

OVERALL PLAN LEGEND

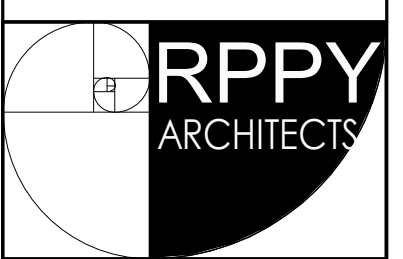
	ROOM NAME & NUMBER
	SECTION NUMBER & SHEET
	ELEVATION NUMBER & SHEET
	DETAIL NUMBER & SHEET
	PIPE BOLLARD, 4" DIA. AT BANK EQUIPMENT, 6" DIA. ELSEWHERE. REFER TO 6/G1.2.

NOTES:
1) ALL CONCRETE PORCHES AND SIDEWALKS SHALL ORIGINATE @ 4" BELOW FINISHED FLOOR LEVEL OF BUILDING AT METAL PANEL LOCATIONS; SLOPING UP TO 1/2" AT DOORS AND STOREFRONTS. CONCRETE SHALL SLOPE AWAY FROM BUILDING @ MINIMUM 1/8"=12" SLOPE.
2) ALL CONCRETE SIDEWALKS SHALL HAVE CONTROL JOINTS EVERY 5' LINEAR FEET AND EXPANSION JOINTS EVERY 20' LINEAR FEET.



No.	Revision	Date
ADD 06		2/6/23

Architectural Site Plan



12-07-22	1711
DATE	JOB NO.
A1.0	25
SHEET	OF

DRAWINGS, WRITTEN MATERIAL, AND DESIGN CONCEPTS SHALL NOT BE USED OR REPRODUCED IN WHOLE OR IN PART IN ANY FORM WITHOUT PRIOR CONSENT OF RPPY ARCHITECTS. DO NOT SCALE DRAWINGS. USE GIVEN DIMENSIONS ONLY. IF NOT SHOWN, VERIFY DIMENSIONS WITH THE ARCHITECT. CONTRACTOR SHALL CHECK AND VERIFY ALL DIMENSIONS AND CONDITIONS AT JOB SITE.