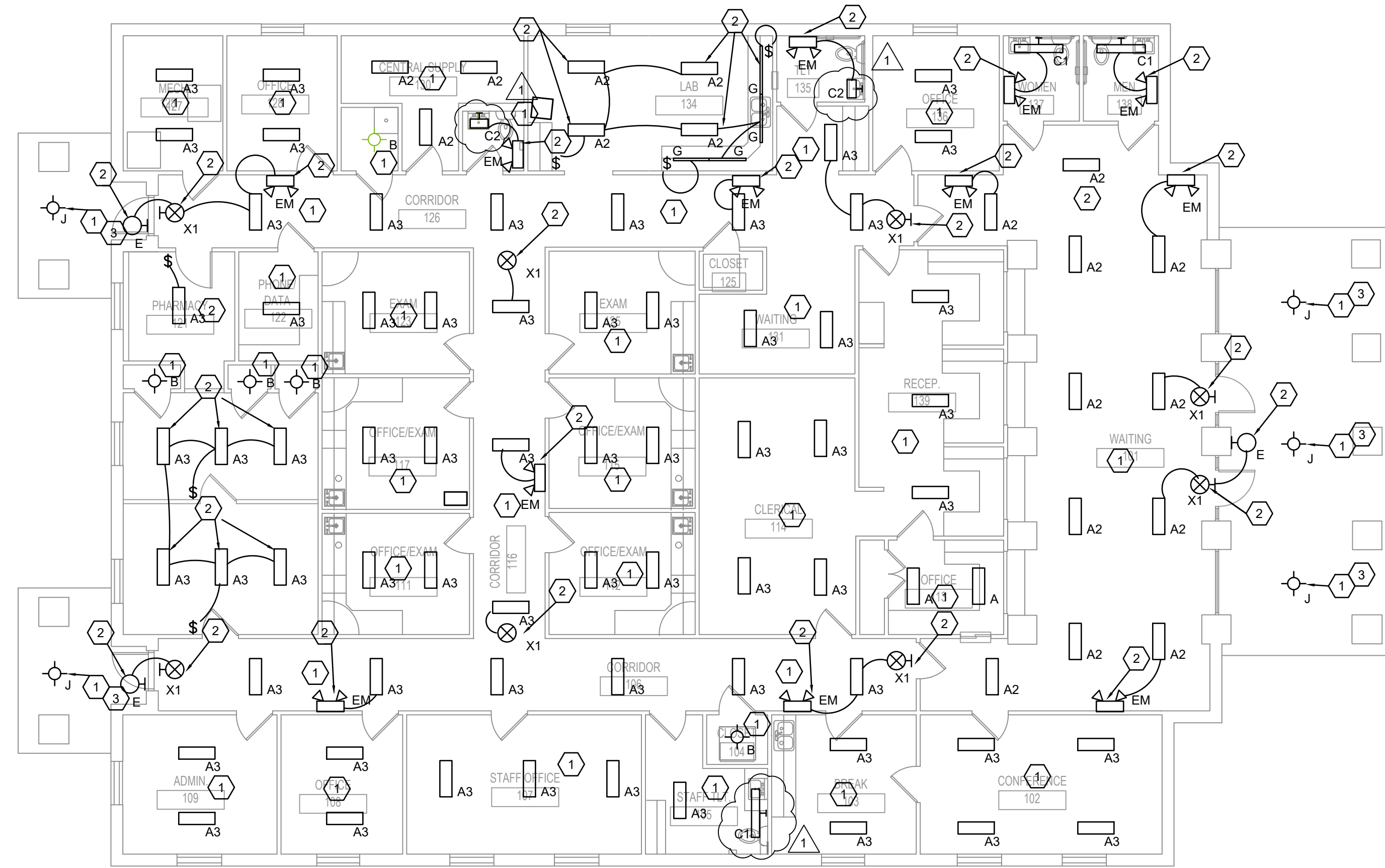


NORTH
1 FLOOR PLAN - LIGHTING DEMOLITION
 SCALE: 1/8" = 1'-0"



NORTH
1 FLOOR PLAN - LIGHTING
 SCALE: 1/8" = 1'-0"

- DEMOLITION KEYED NOTES:**
- 1 REMOVE EXISTING LIGHT FIXTURE, BOX, WIRE, AND CONDUIT IN THIS ROOM BACK TO NEAREST J-BOX. REMOVE EXISTING SWITCH(ES) AND PROVIDE BLANK COVERPLATE AS REQUIRED.
 - 2 REMOVE EXISTING LIGHT FIXTURE IN THIS ROOM. BOX, CONDUIT, AND WIRE TO REMAIN. REMOVE EXISTING SWITCH, SWITCH BOX AND CONDUIT TO REMAIN.
 - 3 REMOVE EXISTING LIGHT FIXTURES IN THIS ROOM. BOX, CONDUIT, AND WIRE TO REMAIN. EXISTING SWITCH(ES) TO REMAIN.
 - 4 REMOVE EXISTING UV LIGHT, WIRE, AND CONDUIT.

- KEYED NOTES:**
- 1 INSTALL NEW LIGHT FIXTURE(S) IN EXISTING J-BOX. RECONNECT TO EXISTING CIRCUIT AND SWITCHING.
 - 2 INSTALL NEW LIGHT FIXTURE IN NEW J-BOX. CONNECT TO NEAREST AVAILABLE CIRCUIT OR AS SHOWN. EXTEND HOT AS NECESSARY.
 - 3 BLOCK AND PATCH EXISTING HOLE AS REQUIRED. RECONNECT TO EXISTING CIRCUIT.

