

*This Addendum must be signed and either emailed to [pwitcher@mce.us.com](mailto:pwitcher@mce.us.com) or faxed back to the office of McClelland Consulting Engineers, Inc. at (501) 371-9932 to acknowledge receipt 24 hours prior to the bid opening.*

Signature: \_\_\_\_\_

Company: \_\_\_\_\_

**ADDENDUM NO. 2**

**DATE: MAY 22, 2024**

**RE: CITY OF CORNING, ARKANSAS – CONSTRUCT HELIPAD – 24-5724**

**FROM:** McClelland Consulting Engineers, Inc.  
7302 Kanis Road  
Little Rock, Arkansas 72204  
Phone: 501/371-0272

**TO:** PROSPECTIVE BIDDERS:

This Addendum forms a part of the Contract Documents and modifies the original Bidding Documents dated **May 3, 2024** as noted below. Acknowledge receipt of the Addendum in the space provided on the Bid Form. Failure to do so may subject the Bidder to disqualification.

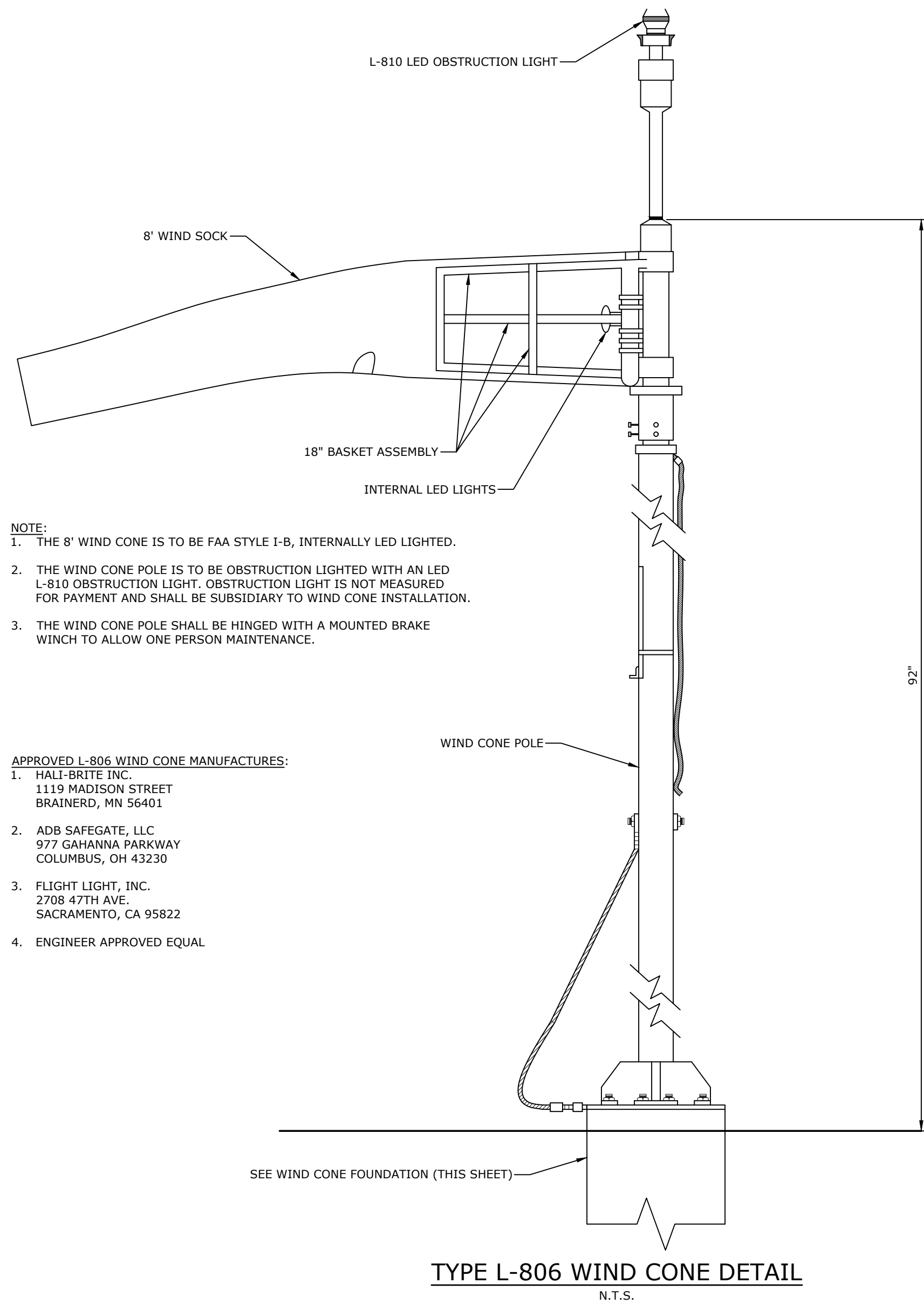
This Addendum consists of 2 page(s).

**PLANS**

---

1. Sheet 12 – MISCELLANEOUS DETAILS III
  - Replace Sheet 12 MISCELLANEOUS DETAILS III with attached revised Sheet 12 MISCELLANEOUS DETAILS. Sheet updated to no longer include L-823 Connector Installation Detail.

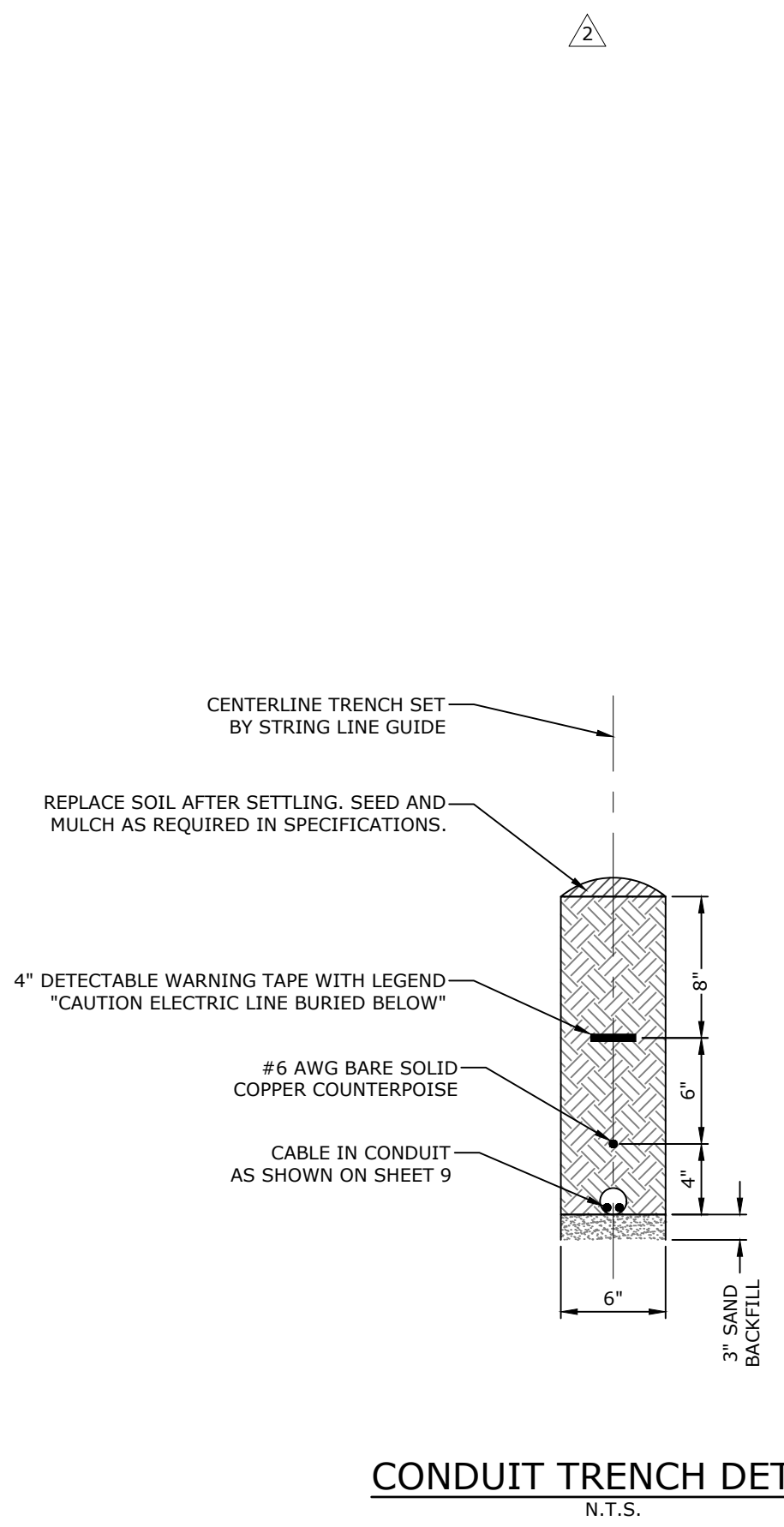
**END OF ADDENDUM**



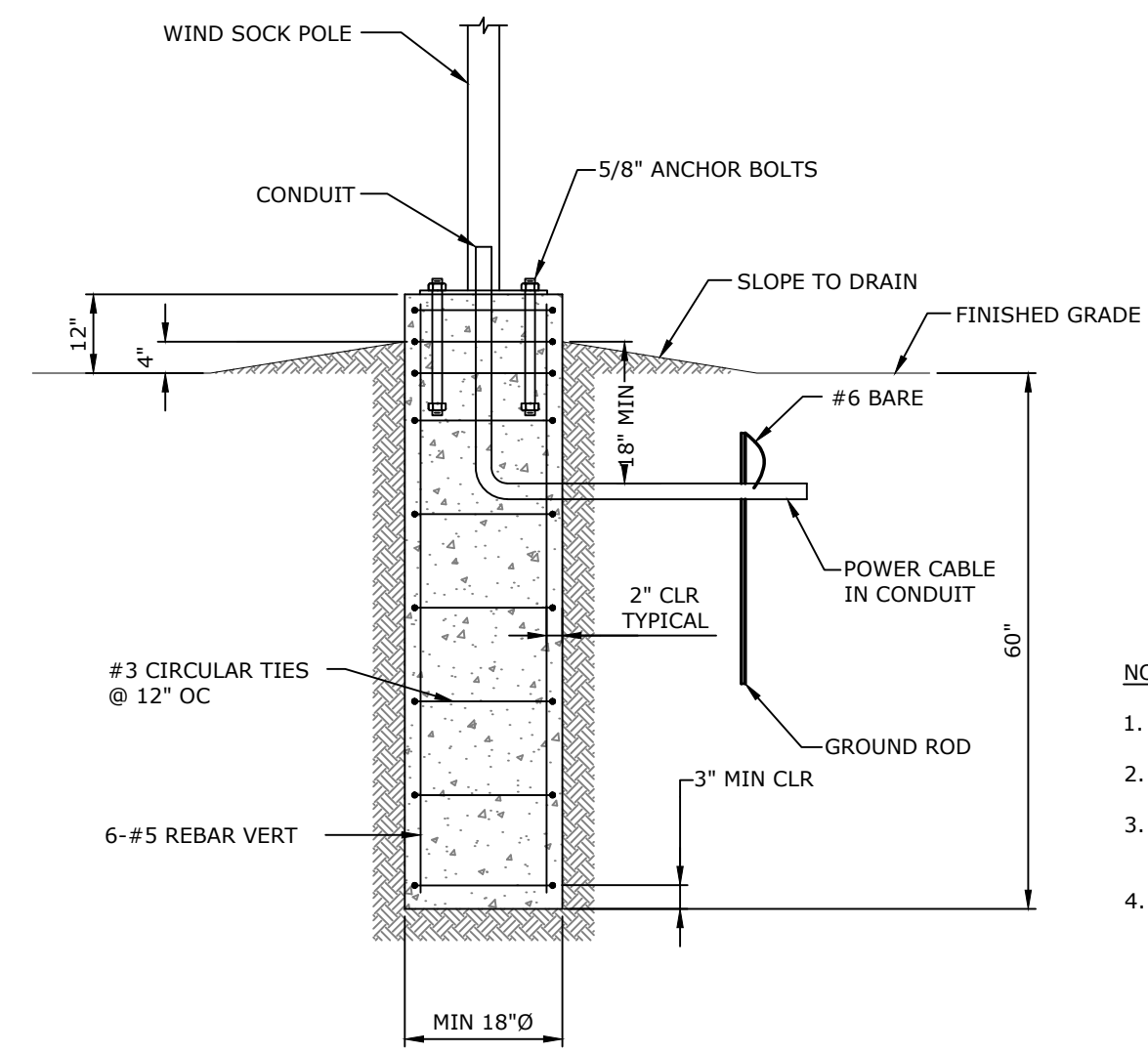
- NOTE:**
1. THE 8' WIND CONE IS TO BE FAA STYLE I-B, INTERNALLY LED LIGHTED.
  2. THE WIND CONE POLE IS TO BE OBSTRUCTION LIGHTED WITH AN LED L-810 OBSTRUCTION LIGHT. OBSTRUCTION LIGHT IS NOT MEASURED FOR PAYMENT AND SHALL BE SUBSIDIARY TO WIND CONE INSTALLATION.
  3. THE WIND CONE POLE SHALL BE HINGED WITH A MOUNTED BRAKE WINCH TO ALLOW ONE PERSON MAINTENANCE.

- APPROVED L-806 WIND CONE MANUFACTURERS:**
1. HALL-BRITE INC.  
1119 MADISON STREET  
BRainerD, MN 56401
  2. ADB SAFEGATE, LLC  
977 GAHANNA PARKWAY  
COLUMBUS, OH 43230
  3. FLIGHT LIGHT, INC.  
2708 47TH AVE.  
SACRAMENTO, CA 95822
  4. ENGINEER APPROVED EQUAL

**TYPE L-806 WIND CONE DETAIL**  
N.T.S.

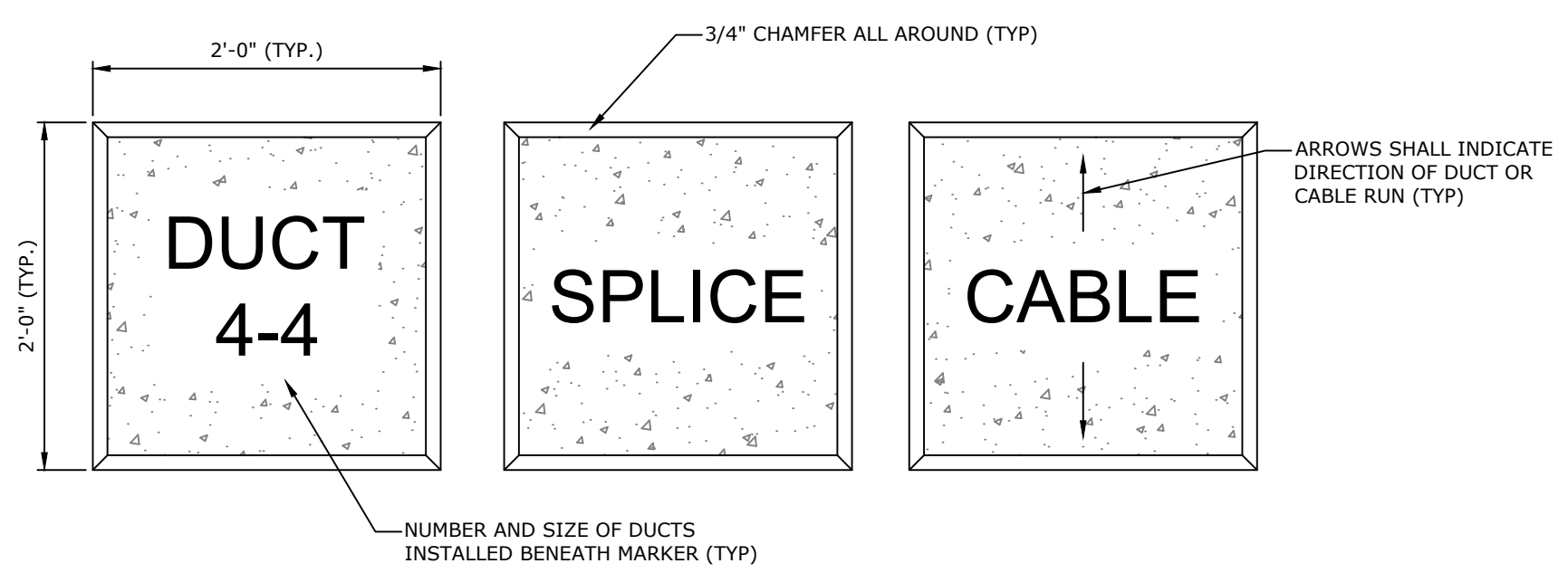


**CONDUIT TRENCH DETAIL**  
N.T.S.



- NOTES:**
1. CONCRETE: 3,000 PSI @ 28 DAYS.
  2. REINF: ASTM A615 GRADE 60.
  3. ASSUMED ALLOWABLE PASSIVE PRESSURE = 200 PCF.
  4. ANCHOR BOLTS SHALL BE AS SPECIFIED BY THE MANUFACTURER, IF NONE ARE SPECIFIED USE ASTM F1554 GRADE 36 MINIMUM.

**WIND CONE FOUNDATION**  
N.T.S.



- NOTES:**
1. LETTERS SHALL BE 4" HIGH, 3" WIDE, STROKE 1/2" WIDE, IMPRESSED 1/4" DEEP, LETTERS SHALL BE STENCILED.
  2. MARKERS SHALL BE 4" THICK MINIMUM AND PROJECT 1" A.F.G. MAXIMUM.
  3. MARKERS SHALL BE PAINTED AVIATION ORANGE.
  4. STERILIZE SOIL 2' ALL AROUND.
  5. COST OF CONCRETE MARKERS IS INCIDENTAL TO THE ASSOCIATED ITEMS OF DUCT OR CABLE.
  6. CABLE AND SPLICE MARKERS SHALL IDENTIFY THE CIRCUITS WHICH THE CABLES BELONG TO.
  7. REFER TO PROJECT SPECIFICATIONS FOR PLACEMENT OF CONCRETE MARKERS.

**CONCRETE MARKER DETAILS**  
N.T.S.

W:\2024\24-5724\_Corning Municipal Airport Construct Helipad\Design Drawings\Civil\24-5724\_Cover.dwg, PRINTED ON: May 22, 2024 @ 11:44 AM

**MCCLELLAND CONSULTING ENGINEERS, INC.**  
DESIGNED TO SERVE ENGINEERS, INC.  
7302 KANIS ROAD  
LITTLE ROCK, ARKANSAS 72204  
(501) 371-0272  
HTTP://WWW.MCE.US.COM

STATE OF ARKANSAS  
REGISTERED PROFESSIONAL ENGINEER  
No. 15184  
MATTHEW R. VINIARD  
5/2/24  
ORIGINAL SIGNATURE ON FILE

CITY OF CORNING, ARKANSAS  
CONSTRUCT HELIPAD  
CORNING, ARKANSAS  
©2024

**811**  
Know what's below.  
Call before you dig.

| REVISIONS | DATE      | DESCRIPTION    |
|-----------|-----------|----------------|
| REV 1     | 5/15/2024 | ADDENDUM NO. 1 |
| REV 2     | 5/22/2024 | ADDENDUM NO. 2 |

**MISCELLANEOUS DETAILS III**

|                     |                        |
|---------------------|------------------------|
| DESIGNED BY:<br>JME | DRAWN BY:<br>SJM       |
| DATE:<br>MAY, 2024  | REVISION:              |
| SCALE:<br>N.T.S.    | JOB NUMBER:<br>24-5724 |