

**SECTION 00 91 13**  
**ADDENDUM NUMBER 003**

**DATE:** May 31, 2024

**PROJECT:** Brookland Municipal Center

**OWNER:** City of Brookland, Arkansas

**ARCHITECT:** Cooper Mixon Architects, PLLC

**TO: BIDDERS**

This Addendum forms a part of the Contract Documents and modifies the original Procurement Documents dated April 19, 2024, with amendments and additions noted below.

Acknowledge receipt of this Addendum in the space provided in the bid form. Failure to do so may disqualify the bidder.

This Addendum consists of the following documents and revisions:

**CHANGES TO THE PROJECT MANUAL – INTRODUCTORY REQUIREMENTS, PROCUREMENT REQUIREMENTS AND CONTRACTING REQUIREMENTS:**

1. Replace Section 00 01 10 – Table of Contents with revised Section issued with this Addendum.
  - a. Insert (this) Section 00 91 13 – Addendum Number 003 issued with this Addendum.

**CLARIFICATIONS:**

1. REGARDING EXTERIOR LETTERING
  - a. The following are illuminated – BUILDING MOUNTED LETTERS
  - b. The following are NOT illuminated – MONUMENT SIGN MOUNTED LETTERS

**CHANGES TO THE DRAWINGS:**

1. Insert the following attached revised Drawings and new drawings issued with this Addendum:

**Sheet**            **Title/Description**

**ARCHITECTURAL**

A-303            BUILDING SECTION & LOBBY ROOF DETAILS

**ELECTRICAL**

E-100            SITE ELEC PLAN

E-301            ONE-LINE DIAGRAM & PANEL SCHEDULES

**END OF SECTION**

**SECTION 00 01 10  
TABLE OF CONTENTS**

**PROCUREMENT AND CONTRACTING REQUIREMENTS**

**DIVISION 00 -- PROCUREMENT AND CONTRACTING REQUIREMENTS**

- 00 01 05 - Certifications Page
- 00 01 10 - Table of Contents
- 00 11 13 - Advertisement for Bids
- 00 21 13 - Instructions to Bidders
  - AIA Document A701 - 2018 Instructions to Bidders
- 00 31 00 - Available Project Information
  - Geotechnical Report
- 00 41 00 - Bid Form
- 00 50 00 - Contracting Forms and Supplements
- 00 52 00 - Agreement Form
  - AIA Document A101 - 2017 Standard Form of Agreement between Owner and Contractor where the basis of payment is a Stipulated Sum.
  - AIA Document A101 - 2017 Exhibit A - Insurance and Bonds
- 00 72 00 - General Conditions
  - AIA Document A201 - 2017 General Conditions of the Contract for Construction
- 00 73 00 - Supplementary Conditions
- [00 91 11 - ADDENDUM 001](#)
- [00 91 12 - ADDENDUM 002](#)
- [00 91 13 - ADDENDUM 003](#)

**SPECIFICATIONS**

**DIVISION 01 -- GENERAL REQUIREMENTS**

- 01 10 00 - Summary
- 01 20 00 - Price and Payment Procedures
- 01 21 00 - Allowances
- 01 22 00 - Unit Prices
- 01 25 00 - Substitution Procedures
  - 01 25 10 - Substitution Request Form
- 01 30 00 - Administrative Requirements
- 01 32 16 - Construction Progress Schedule
- 01 40 00 - Quality Requirements
- 01 42 16 - Definitions
- 01 45 33 - Code-Required Special Inspections
- 01 50 00 - Temporary Facilities and Controls

- 01 51 00 - Temporary Utilities
- 01 60 00 - Product Requirements
- 01 61 16 - Volatile Organic Compound (VOC) Content Restrictions
- 01 70 00 - Execution and Closeout Requirements
- 01 74 19 - Construction Waste Management and Disposal
- 01 78 00 - Closeout Submittals
- 01 79 00 - Demonstration and Training

**DIVISION 02 -- EXISTING CONDITIONS**

For Site Preparation and Earthwork, see Division 31

**DIVISION 03 -- CONCRETE**

- 03 10 00 - Concrete Forming and Accessories
- 03 20 00 - Concrete Reinforcing
- 03 25 10 - Construction Joints and Waterstops
- 03 30 00 - Cast-in-Place Concrete
- 03 30 50 - Concrete Sidewalks
- 03 35 11 - Concrete Floor Finishes

**DIVISION 04 -- MASONRY**

- 04 26 13 - Masonry

**DIVISION 05 -- METALS**

- 05 12 00 - Structural Steel Framing
- 05 31 00 - Steel Decking
- 05 40 00 - Cold-Formed Metal Framing
- 05 44 00 - Cold-Formed Metal Trusses
- 05 50 00 - Metal Fabrications
- 05 51 33 - Metal Ladders

**DIVISION 06 -- WOOD, PLASTICS, AND COMPOSITES**

- 06 10 00 - Rough Carpentry
- 06 10 63 - Miscellaneous Rough Carpentry
- 06 41 00 - Architectural Wood Casework

**DIVISION 07 -- THERMAL AND MOISTURE PROTECTION**

- 07 13 00 - Sheet Waterproofing
- 07 19 00 - Water Repellents
- ~~07 21 00 - Thermal Insulation~~
- ~~07 21 10 - Polyisocyanurate Continuous Wall Insulation~~
- ~~07 25 00 - WEATHER BARRIERS~~
- 07 25 00 - Weather Barriers
- 07 42 13 - Metal Wall Panels

- 07 42 13.23 - Metal Composite Material Wall Panels
- 07 54 00 - Thermoplastic-Polyolefin (TPO) Membrane Roofing
- 07 62 00 - Sheet Metal Flashing and Trim
- 07 72 00 - Roof Accessories
- 07 84 00 - Firestopping
- 07 92 00 - Joint Sealants

**DIVISION 08 -- OPENINGS**

- 08 11 13 - Hollow Metal Doors and Frames
- 08 14 16 - Flush Wood Doors
- 08 31 00 - Access Doors and Panels
- 08 34 90 - Tornado-Resistant Assemblies
- 08 43 13 - Aluminum-Framed Storefronts
- 08 51 13 - Aluminum Windows
- 08 56 53 - Security Windows
- 08 56 53 - SECURITY WINDOWS
- 08 56 59 - Service and Teller Window Units
- 08 71 00 - Door Hardware
- 08 80 00 - Glazing

**DIVISION 09 -- FINISHES**

- 09 05 61 - Common Work Results for Flooring Preparation
- 09 21 16 - Gypsum Board Assemblies
- 09 22 26 - Drywall Ceiling Framing System
- 09 30 00 - Tiling
- 09 51 00 - Acoustical Ceilings
- 09 65 00 - Resilient Flooring
- 09 74 26 - Wood Wall System
- 09 90 00 - Painting and Coating

**DIVISION 10 -- SPECIALTIES**

- 10 14 00 - Signage
- 10 14 14 - Building Plaques
- 10 14 19 - Exterior Signage
- 10 21 13.19 - Plastic Toilet Compartments
- 10 26 00 - Wall Protection
- 10 28 00 - Toilet, Bath, and Laundry Accessories
- 10 44 00 - Fire Protection Specialties
- 10 73 16.13 - Metal Canopies
- 10 75 00 - Flagpoles

**DIVISION 11 -- EQUIPMENT**

11 30 13 - Residential Appliances

**DIVISION 12 -- FURNISHINGS**

12 25 13 - Window Roller Shades

12 36 00 - Countertops

**DIVISION 13 -- SPECIAL CONSTRUCTION**

**DIVISION 14 -- CONVEYING EQUIPMENT**

**DIVISION 21 -- FIRE SUPPRESSION**

**DIVISION 22 -- PLUMBING**

22 01 00 - Plumbing General Requirements

22 02 00 - Plumbing Piping

22 05 29 - Hangers and Supports for Plumbing Piping and Equipment

22 05 53 - Identification for Plumbing Piping and Equipment

22 07 00 - Plumbing Insulation

**DIVISION 23 -- HEATING, VENTILATING, AND AIR-CONDITIONING (HVAC)**

23 01 00 - HVAC General Requirements

23 05 29 - Hangers and Supports for HVAC Piping and Equipment

23 05 53 - Identification for HVAC Piping and Equipment

23 05 93 - Testing, Adjusting, and Balancing for HVAC

23 07 00 - HVAC Insulation

23 31 13 - Metal Ductwork

**DIVISION 25 -- INTEGRATED AUTOMATION**

**DIVISION 26 -- ELECTRICAL**

26 00 00 - Electrical General Provisions

26 05 00 - Common Work Results for Electrical

26 05 19 - Electrical Power Conductors and Cables

26 05 26 - Grounding and Bonding

26 05 33 - Raceways

26 05 34 - Pull Boxes and Junction Boxes

26 05 35 - Outlet Boxes

26 05 53 - Identification for Electrical Equipment

26 24 14 - Panelboards

26 27 26 - Wiring Devices

26 27 28 - Disconnect Switches

26 28 13 - Fuses and Circuit Breakers

26 51 13 - Lighting Fixtures - LED

**DIVISION 27 -- COMMUNICATIONS**

**DIVISION 28 -- ELECTRONIC SAFETY AND SECURITY**

28 10 00 - Access Control

**DIVISION 31 -- EARTHWORK**

31 20 00 - Site Preparation

31 21 00 - Subsurface Investigation

31 26 00 - Contractor's Trench Excavation

31 30 00 - Earthwork

31 31 16 - Termite Control

31 31 50 - Trench Excavation

**DIVISION 32 -- EXTERIOR IMPROVEMENTS**

32 33 13 - Site Bicycle Racks

**DIVISION 33 -- UTILITIES**

33 00 00 - General Piping Requirements

33 10 00 - Separation Distances

33 20 00 - Sterilization of Water Mains

33 30 00 - Pipe Testing and Cleanup

33 40 00 - Site Restoration

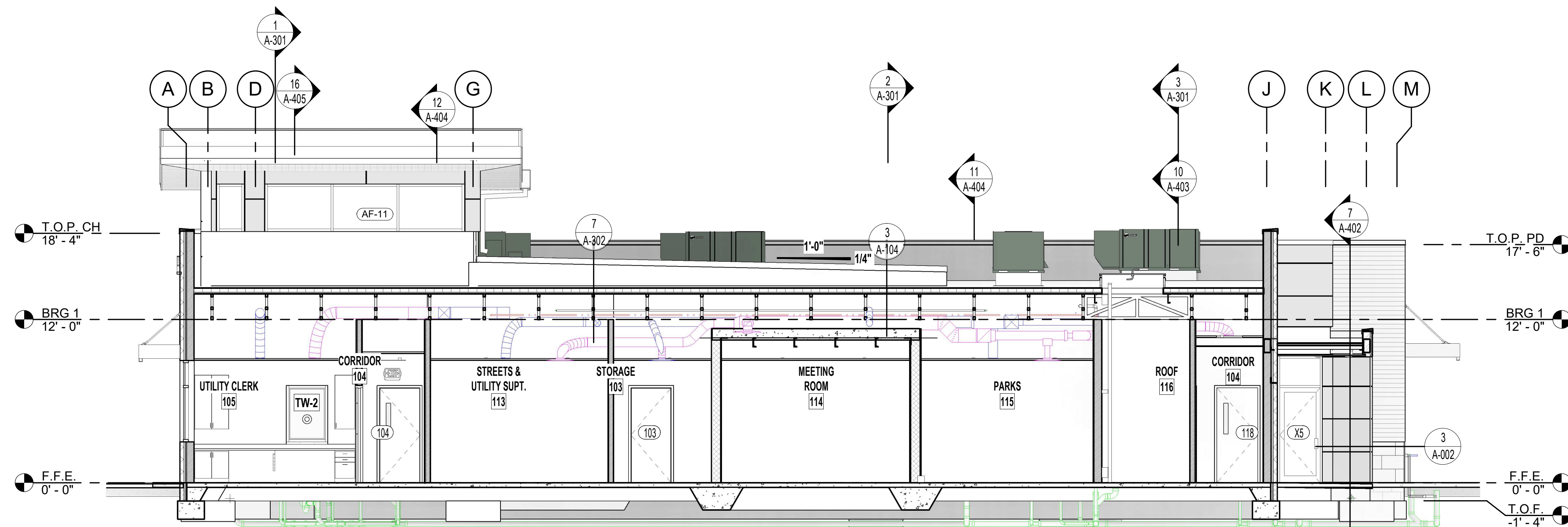
**DIVISION 34 -- TRANSPORTATION**

**DIVISION 40 -- PROCESS INTEGRATION**

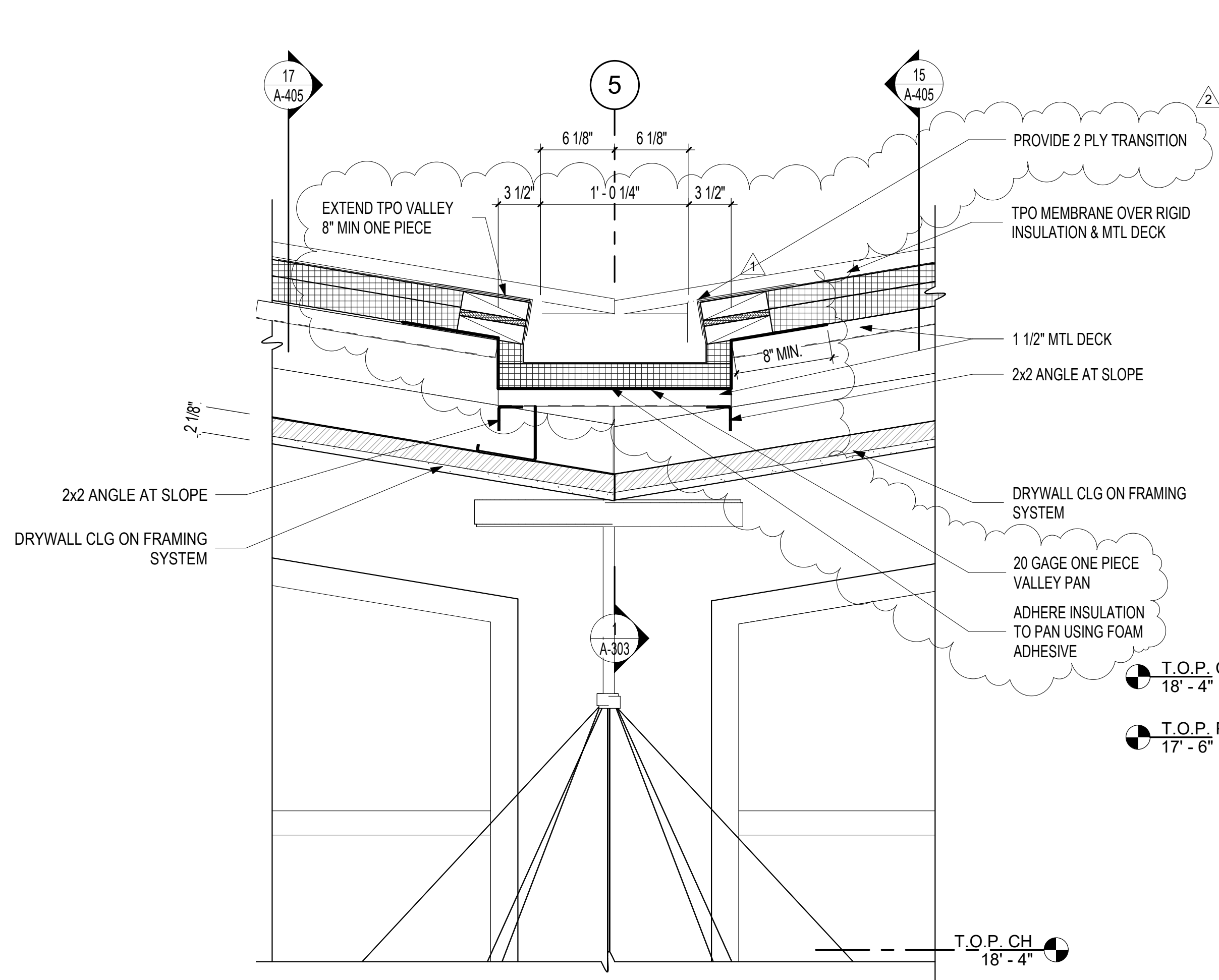
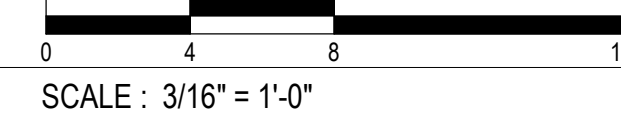
**END OF SECTION**

This page intentionally left blank

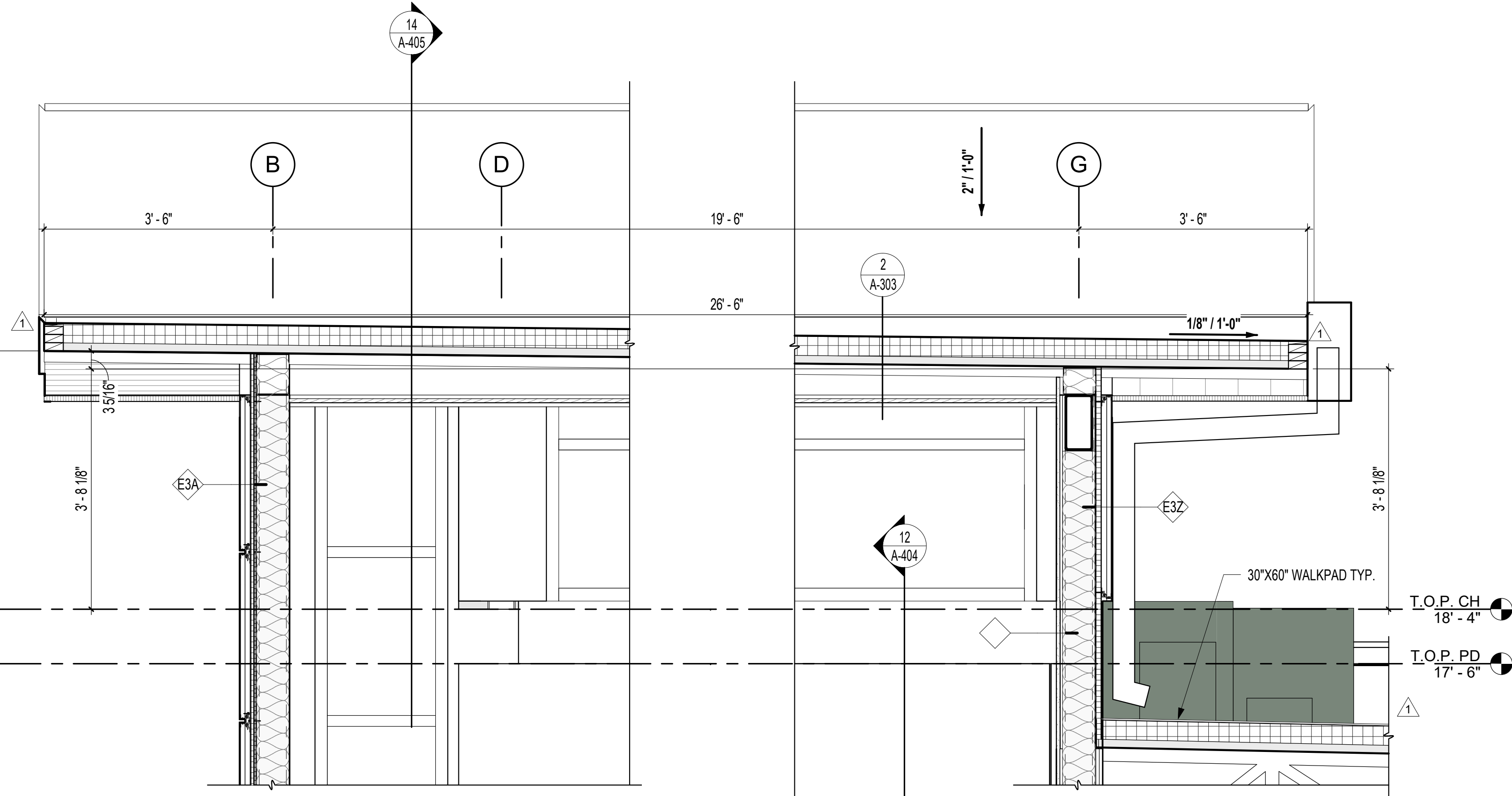
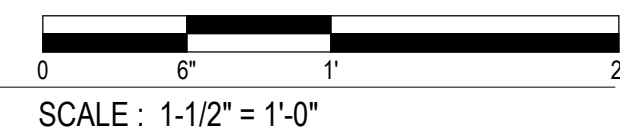




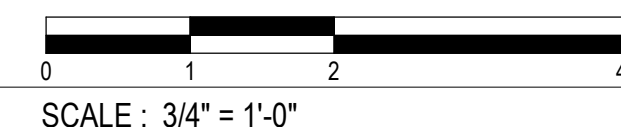
**7** BUILDING SECTION 7  
3/16" = 1'-0"



**2** DETAIL THRU LOBBY ROOF GUTTER  
1 1/2" = 1'-0"



**1** SECTION AT LOBBY ROOF GUTTER  
3/4" = 1'-0"



2	05/31/24	ADDENDUM 003
1	05/21/24	ADDENDUM 001

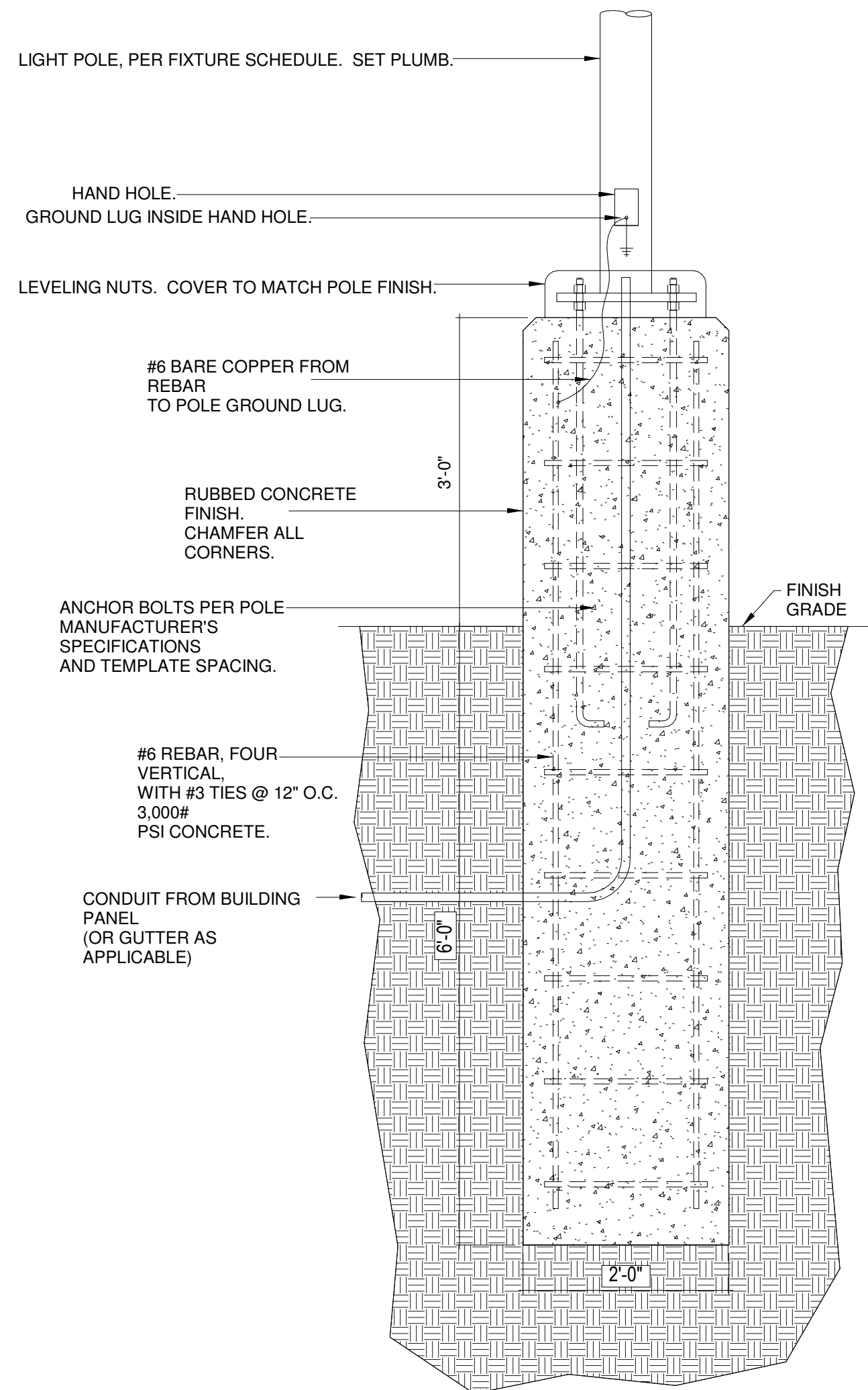


**COOPER MIXON ARCHITECTS**  
305 Union Street, 2nd Floor, Jonesboro, AR 72401  
Phone 870.336.0536 www.coopermixon.com

**CONSTRUCTION DOCUMENTS**

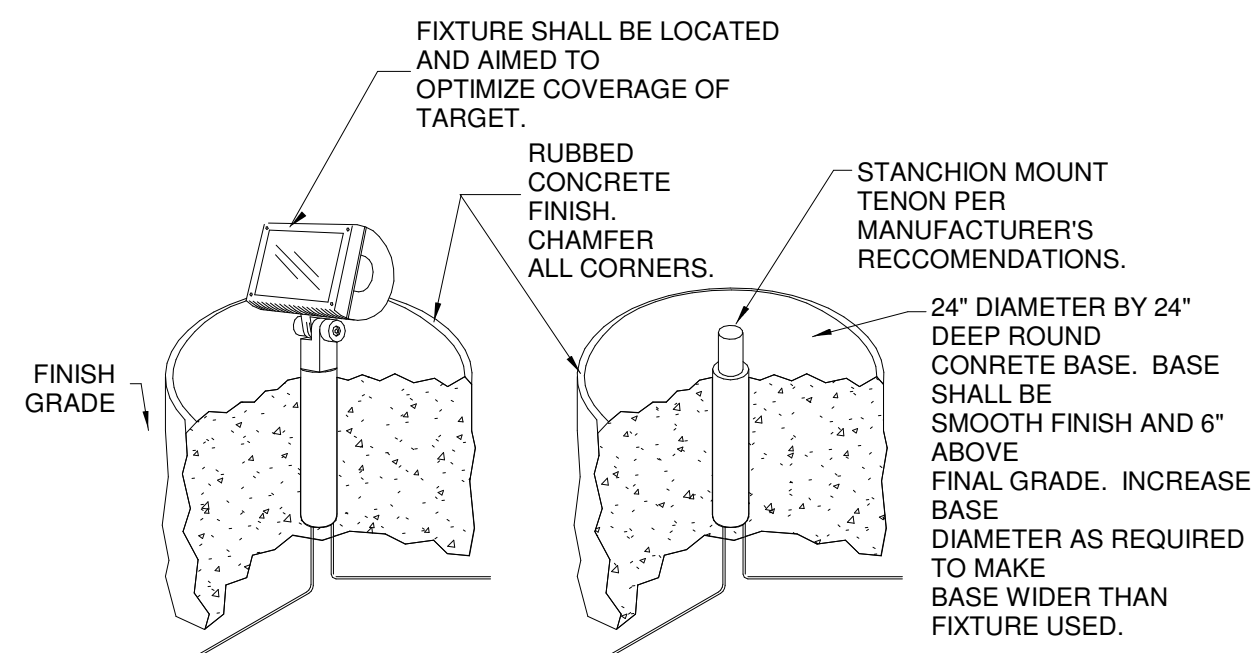
PROJECT NO. 2224  
PROJECT NAME: BROOKLAND MUNICIPAL CENTER  
DATE: 04/19/2024  
CONTENTS: BUILDING SECTION & LOBBY ROOF DETAILS

SHEET NUMBER  
**A-303**



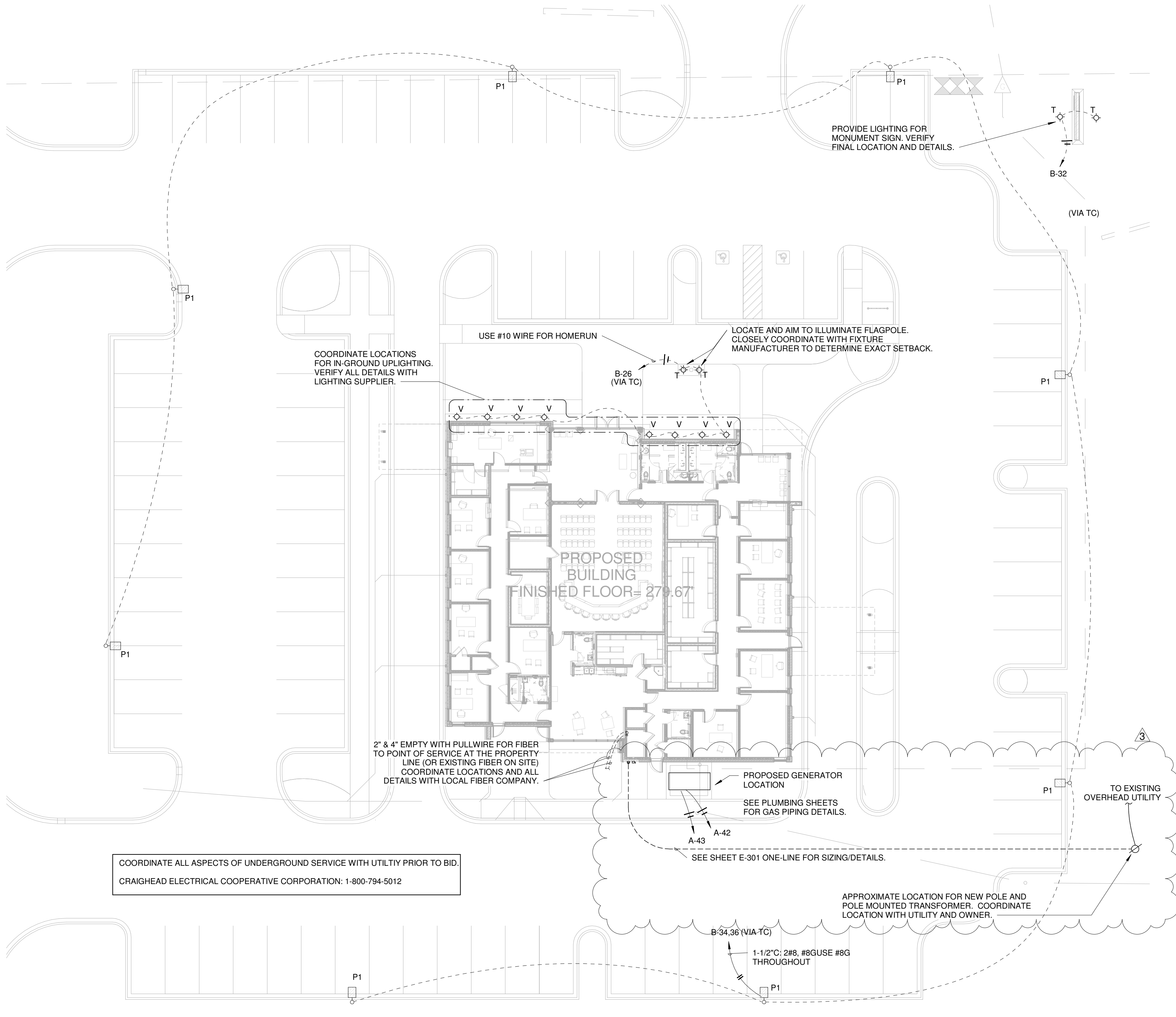
**POLE BASE DETAIL**

NTS



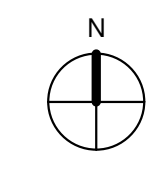
**FLAG POLE FLOOD LIGHT BASE DETAIL**

NTS



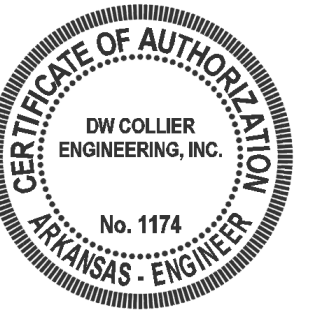
COORDINATE ALL ASPECTS OF UNDERGROUND SERVICE WITH UTILITY PRIOR TO BID.  
CRAIGHEAD ELECTRICAL COOPERATIVE CORPORATION: 1-800-794-5012

APPROXIMATE LOCATION FOR NEW POLE AND POLE MOUNTED TRANSFORMER. COORDINATE LOCATION WITH UTILITY AND OWNER.

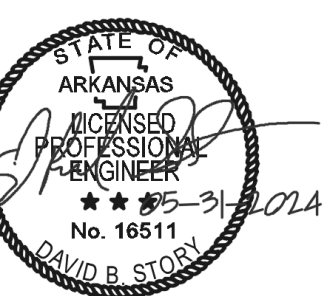


**1 SITE PLAN**  
E-100 SCALE: 1/16" = 1'-0"

**BROOKLAND MUNICIPAL CENTER  
CITY OF BROOKLAND**



3	5/31/2024	ADDENDUM 3
---	-----------	------------



**COOPER MIXON ARCHITECTS**  
505 Union Street, 2nd Floor Jonesboro, AR 72401  
phone 870.336.0536 www.coopermixon.com

**CONSTRUCTION DOCUMENTS**

PROJECT NO. 2224

PROJECT NAME  
BROOKLAND MUNICIPAL CENTER

DATE  
05-31-2024

CONTENTS  
SITE ELEC PLAN

SHEET NUMBER

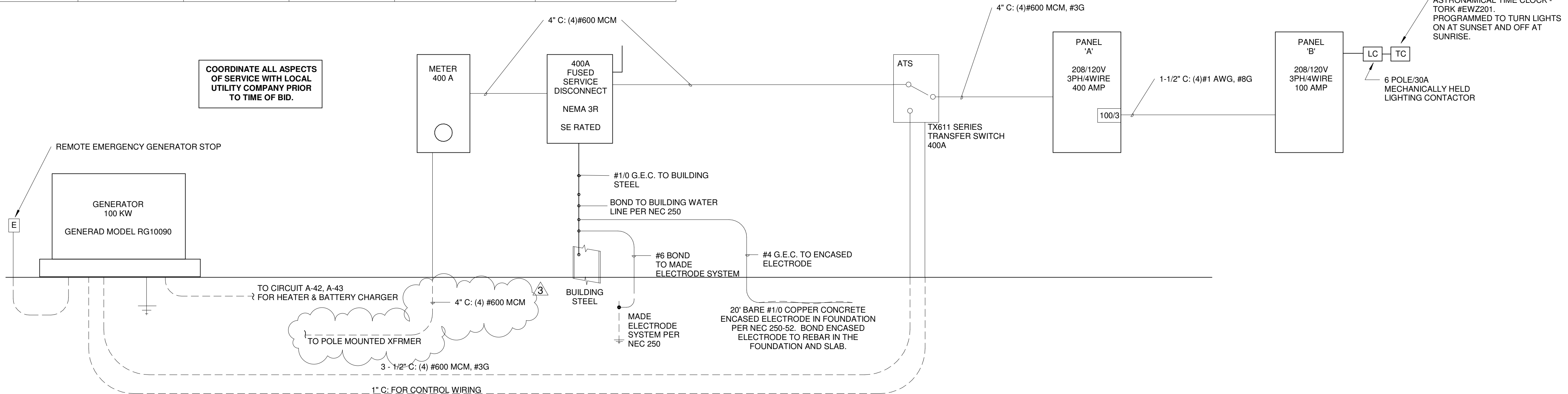
**E-100**

BROOKLAND, ARKANSAS  
REGARDING THE SENSITIVE ISSUES OF CONFIDENTIALITY AND COPYRIGHT, ANY REQUEST FOR THE RELEASE, OR REPRODUCTION OF THESE DRAWINGS MUST BE APPROVED BY COOPER MIXON ARCHITECTS, PLLC

5/31/2024 3:13:55 PM

PANELBOARD NAME:		A								
LOCATION: ELEC. RM 125 FEED FROM: UTILITY MOUNTING: Surface A.I.C. Rating: 10kA		VOLTS: 120/208 Wye PHASES: 3 WIRES: 4 BUS AMPS: 400 A		Mains Type: Main Circuit Breaker NEUTRAL BUS: COPPER GROUND BUS: COPPER ISOLATED GROUND BUS: NO						
CKT	CIRCUIT DESCRIPTION	AMP	POLE	A	B	C	POLE	AMP	CIRCUIT DESCRIPTION	CKT
1				11.0	2.8					2
3	PANEL 'B'	100 A	3					3	35 A RTU-1 (HACR)	4
5										6
7				1.8	2.2					8
9	RTU-3 (HACR)	30 A	3					3	30 A RTU-2 (HACR)	10
11										12
13				2.2	2.3					14
15	RTU-5 (HACR)	30 A	3					3	30 A RTU-4 (HACR)	16
17										18
19				2.2						20
21	EW-1 (HACR)	30 A	2	2.3	2.2			3	30 A RTU-7 (HACR)	22
23	LIGHTING: PD OFFICES	20 A	1							24
25	RECEPTACLE: MICROWAVE (GFCI BREAKER)	20 A	1	1.5	0.7			1	20 A RECEPTACLES: EQUIP RM, JAN, STOR.	26
27	RECEPTACLE: BREAK ROOM	20 A	1					1	20 A RECEPTACLES: SQUAD ROOM	28
29	RECEPTACLE: BREAK ROOM	20 A	1					1	20 A RECEPTACLES: EVIDENCE	30
31	RECEPTACLES: ELEC RM, RR, JAN.	20 A	1	1.1	1.1			1	20 A RECEPTACLES: CAPTAIN	32
33	RECEPTACLES: INTERVIEW RM, EQUIP. RM.	20 A	1					1	20 A IT EQUIPMENT	34
35	RECEPTACLES: CID	20 A	1					1	20 A PUMP: P-1	36
37	RECEPTACLES: CHIEF	20 A	1	0.9	1.2			1	20 A DISHWASHER (GFCI BREAKER)	38
39	RECEPTACLES: EQUIP. RM	20 A	1					1	20 A RECEPTACLES: BREAK RM, CORR, RR	40
41	RECEPTACLE: REFRIGERATOR (GFCI BREAKER)	20 A	1					1	20 A GENERATOR BATTERY CHARGER	42
43	GENERATOR HEATER	20 A	1	0.5	0.1			1	20 A LIGHTING: COUNCIL CHAMBERS, LOBBY	44
45	RECEPTACLE: TELECOM BOARD	20 A	1					1	20 A RECEPTACLE: WATER FOUNTAIN (GFCI BREAKER)	46
47	LIGHTING: PD OFFICES, EVIDENCE	20 A	1							48
49	Spare	20 A	1	0.0						50
51	Spare	20 A	1					1	20 A Spare	52
53	Spare	20 A	1					1	20 A Spare	54
		<b>Total Phase...</b>		33.8	36.4	30.5				
		<b>Total KVA:</b>			100.7					
<b>Panel Totals</b>										
LIGHTING		3.6		100.00%		3.6				
RECEPTACLE		31.3		65.97%		20.7		<b>Total Conn. Load:</b> 100.71 kVA		
HVAC		55.2		100.00%		55.2		<b>Total Est. Demand:</b> 90.06 kVA		
EQUIPMENT								<b>Total Demand Amps:</b> 250 A		
KITCHEN								<b>Panel Design Amps:</b> 400 A		

PANELBOARD NAME:		B								
LOCATION: ROOF 116 FEED FROM: PANEL 'A' MOUNTING: Surface A.I.C. Rating: 10kA		VOLTS: 120/208 Wye PHASES: 3 WIRES: 4 BUS AMPS: 100 A		Mains Type: FEED THRU LUGS NEUTRAL BUS: COPPER GROUND BUS: COPPER ISOLATED GROUND BUS: NO						
CKT	CIRCUIT DESCRIPTION	AMP	POLE	PHASE A	PHASE B	PHASE C	POLE	AMP	CIRCUIT DESCRIPTION	CKT
1				1.8	2.2					2
3	HP-1 (HACR)	30 A	2					3	30 A RTU-6 (HACR)	4
5	RECEPTACLES: MEETING RM.	20 A	1							6
7	RECEPTACLES: UTILITY CLK.	20 A	1	0.7	1.1			1	20 A RECEPTACLES: MAIN LOBBY	8
9	RECEPTACLE: COPIER/PRINTER	20 A	1					1	20 A RECEPTACLES: CORR. RR, PD LOBBY	10
11	RECEPTACLES: UTILITY CLK.	20 A	1					1	20 A RECEPTACLES: PD RECEPTION	12
13	RECEPTACLES: OFFICE MAN.	20 A	1	0.9	0.4			1	20 A RECEPTACLES: COUNCIL CHAMBERS	14
15	RECEPTACLES: COUNCIL CHAMBERS	20 A	1					1	20 A RECEPTACLES: COUNCIL CHAMBERS	16
17	RECEPTACLES: COUNCIL CHAMBERS	20 A	1					1	20 A RECEPTACLES: COUNCIL CHAMBERS	18
19	RECEPTACLES: PARKS	20 A	1	0.9	0.9			1	20 A RECEPTACLES: CORR. STORAGE	20
21	LIGHTING: CITY OFFICES	20 A	1					1	20 A RECEPTACLES: INSPECTIONS	22
23										24
25	EF-5	20 A	2	0.3	0.5			1	20 A RECEPTACLES: UTILITY SUPT.	26
27	RECEPTACLES: CITY ENG.	20 A	1					1	20 A LIGHTING: EXT. BUILDING (VIA TC)	28
29	DOOR ACCESS CONTROL	20 A	1					1	20 A EXTERIOR BUILDING SIGNAGE (VIA TC)	30
31	RECEPTACLES: MAYOR	20 A	1	0.9	0.5			1	20 A MONUMENT SIGN (VIA TC)	32
33	RECEPTACLES: CODE/ANIMAL CONRTL.	20 A	1					2	20 A PARKING LOT POLE LIGHTNG (VIA TC)	34
35										36
37	Spare	20 A	1	0.0	0.0			1	20 A Spare	38
39	Spare	20 A	1					1	20 A Spare	40
41	Spare	20 A	1					1	20 A Spare	42
		<b>Total Phase...</b>		11.0	13.8	9.5				
		<b>Total KVA:</b>			34.3					
<b>Panel Totals</b>										
LIGHTING		1.5		100.00%		1.5		<b>Total Conn. Load:</b> 34.28 kVA		
RECEPTACLE		17.7		78.18%		13.9		<b>Total Est. Demand:</b> 30.41 kVA		
HVAC		10.2		100.00%		10.2		<b>Total Demand Amps:</b> 84 A		
EQUIPMENT								<b>Panel Design Amps:</b> 100 A		
KITCHEN										



1  
E3.1  
ONE-LINE DIAGRAM  
NTS

BROOKLAND MUNICIPAL CENTER  
CITY OF BROOKLAND



3 5/31/2024 ADDENDUM 3



COOPER MIXON ARCHITECTS  
305 Union Street, 2nd fl. Jonesboro, AR 72401  
phone 870.336.0536 www.coopermixon.com

CONSTRUCTION DOCUMENTS

PROJECT NO.  
2224

PROJECT NAME  
BROOKLAND MUNICIPAL CENTER

DATE  
05-31-2024

CONTENTS  
ONE-LINE DIAGRAM & PANEL SCHEDULES

SHEET NUMBER

E-301

BROOKLAND, ARKANSAS  
REGARDING THE SENSITIVE ISSUES OF CONFIDENTIALITY AND COPYRIGHT, ANY REPRODUCTION OF THESE DRAWINGS MUST BE APPROVED BY COOPER MIXON ARCHITECTS PLLC