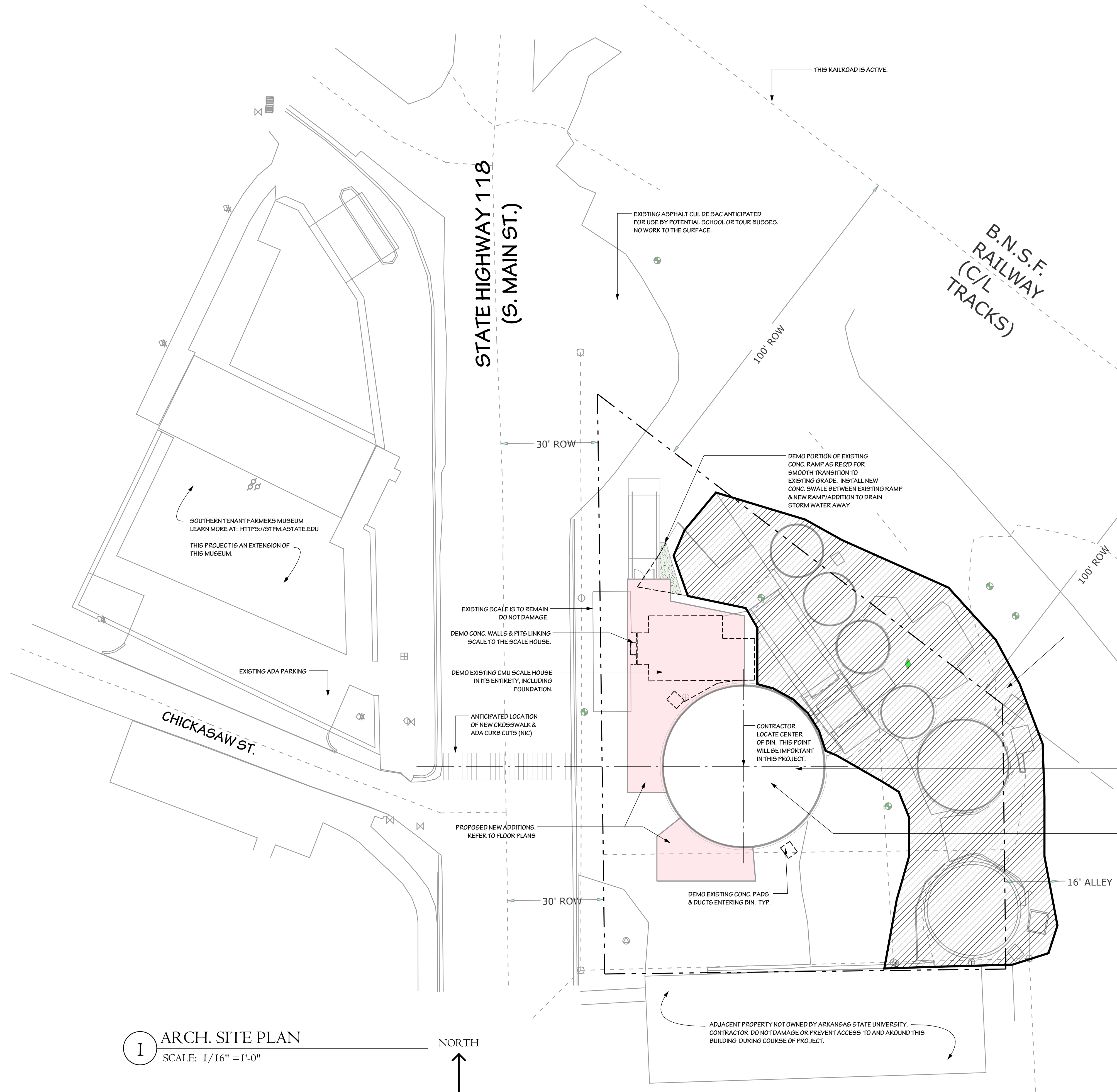


GENERAL NOTES

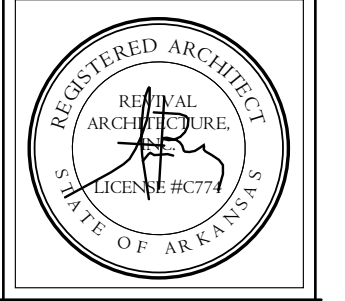
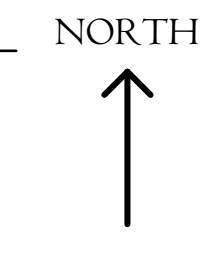
1. THIS PROJECT IS FUNDED BY A GRANT RECEIVED FROM THE ARKANSAS NATURAL & CULTURAL RESOURCES COUNCIL. IT INVOLVES THE ADAPTIVE RE-USE OF AN ABANDONED SET OF GRAIN BINS AND OTHER STRUCTURES INTO A NEW FACILITY SUPPLEMENTING THE EDUCATIONAL OPPORTUNITIES OF THE SOUTHERN TENANT FARMERS MUSEUM, ONE OF SEVERAL ARKANSAS HERITAGE SITES RUN BY ARKANSAS STATE UNIVERSITY. THE PURPOSE OF THE PROJECT IS TO ALLOW THE MUSEUM TO EXPLAIN TO VISITORS, INCLUDING SCHOOL-AGED CHILDREN, HOW THE GRAIN BIN WORKED AS A PART OF AGRICULTURE IN THE NORTHEAST ARKANSAS ECONOMY. AS SUCH, IT WILL BE A HIGH PRIORITY FOR THE PROJECT TO MAKE THE BUILDINGS, RAMP AND IMMEDIATE SURROUNDINGS SAFE FOR CHILDREN AND THE PUBLIC. IT IS ALSO ANTICIPATED THAT THE NEW FACILITY CAN HAVE THE DUAL PURPOSE OF SERVING AS A VENUE FOR PUBLIC AND PRIVATE EVENTS SUCH AS WEDDINGS, CLASS REUNIONS & OTHER GATHERINGS.
2. IN GENERAL, EXISTING BUILDINGS AND SITE FEATURES ARE TO REMAIN AS THERE IS A STRONG PREFERENCE TO KEEP THE EXISTING FEATURES AND PLACE AS "INTACT" AS POSSIBLE, AS THE DAY IT WAS ABANDONED. THUS, TAKE PRECAUTIONS TO PRESERVE AND PROTECT EXISTING FEATURES FROM DAMAGE. OBVIOUSLY, SOME INTERVENTION WILL BE NECESSARY IN ORDER TO MAKE THE SITE SAFE, SUCH AS NEW GUARDRAILS, REMOVAL OF LADDERS, ETC... REFER TO ALLOWANCES.

3. NOT USED

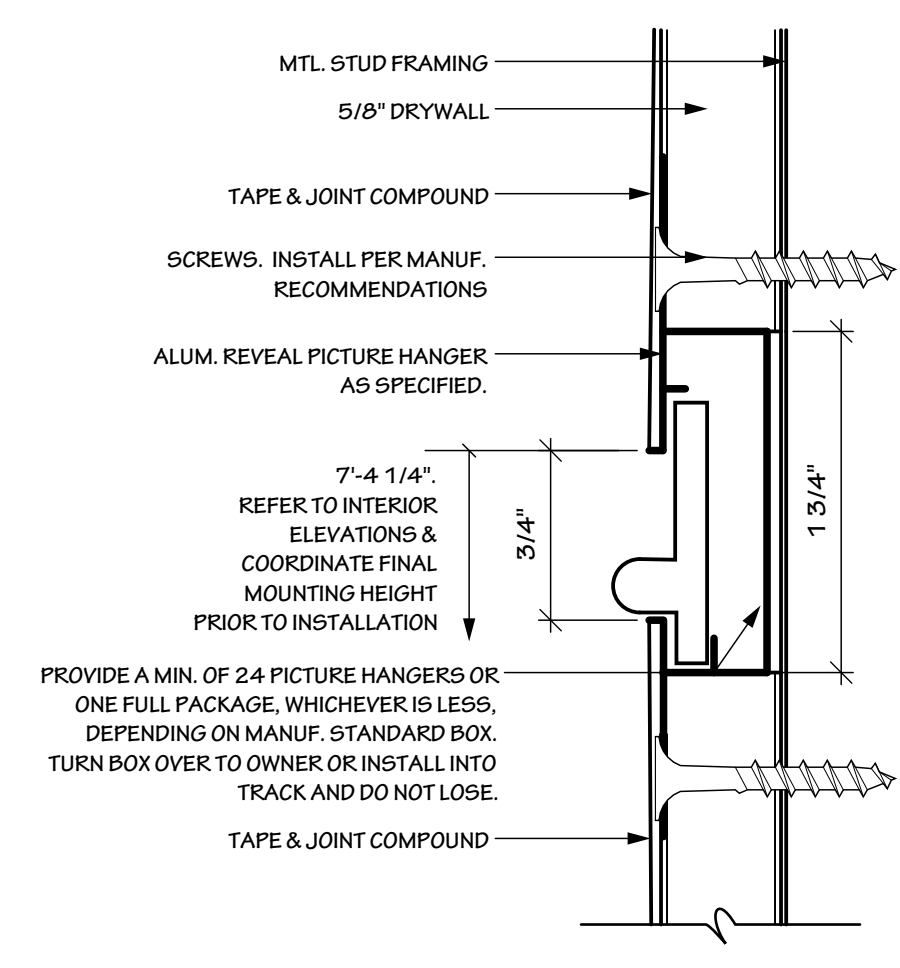
4. CONTRACTOR MAY CONTACT THE ARCHITECT FOR A LINK GIVING ACCESS TO SITE PHOTOGRAPHS INCLUDING DRONE IMAGES. CONTACT AARON RUBY AT 501-951-3316 OR EMAIL AARON@REVIVALARCH.COM.



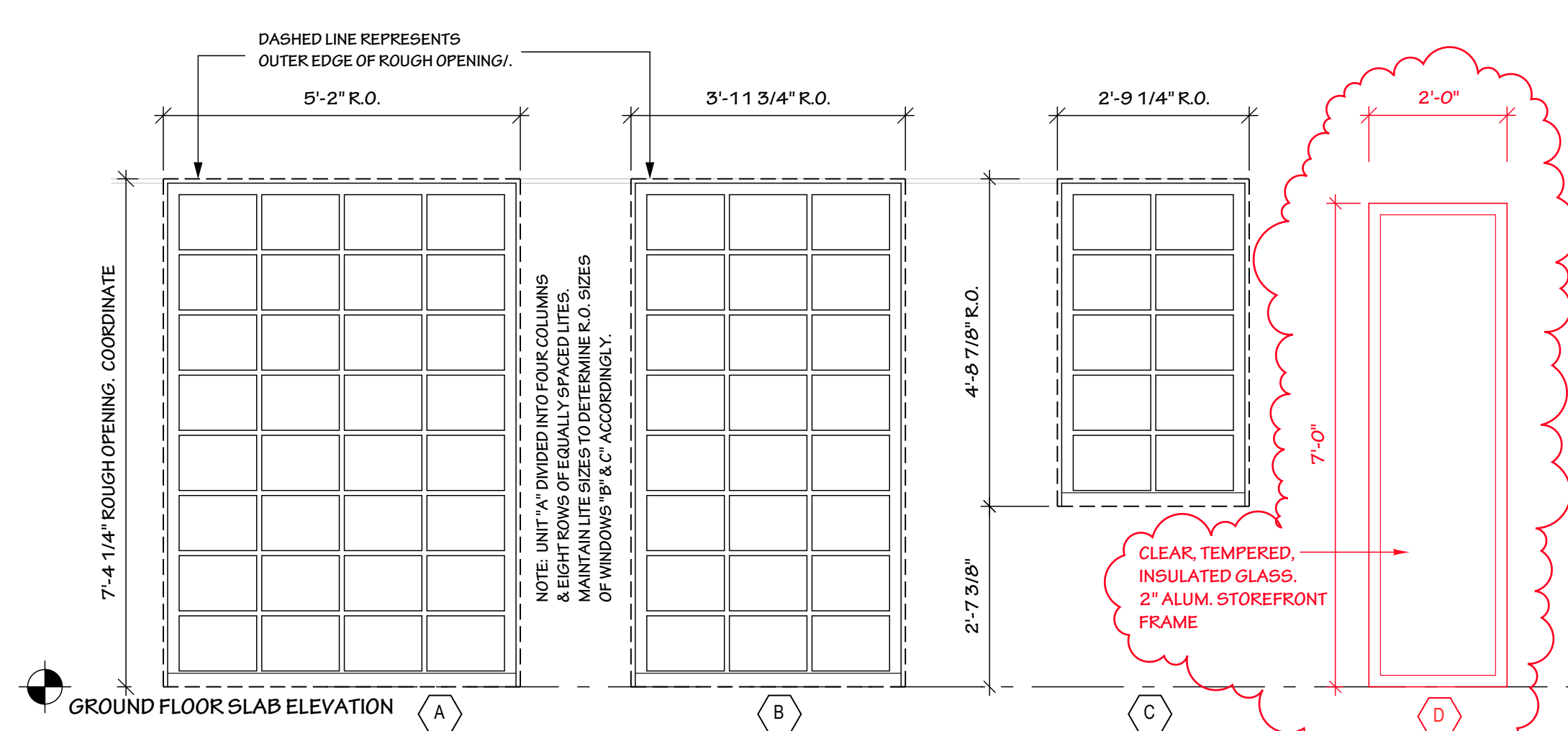
1 ARCH. SITE PLAN
SCALE: 1/16" = 1'-0"



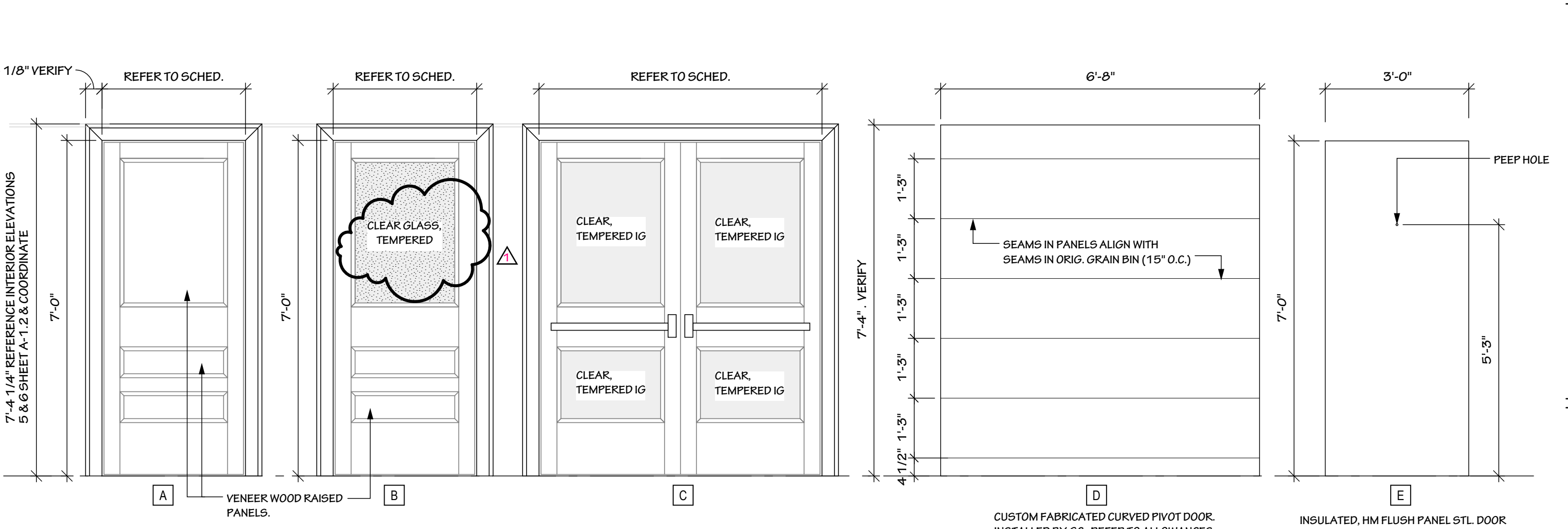
Issue Date:
March 1, 2024
Revisions:
RE-BID April 19, 2024
May 2, 2024



1 PICTURE HANGER REVEAL DETAIL
FULL SCALE

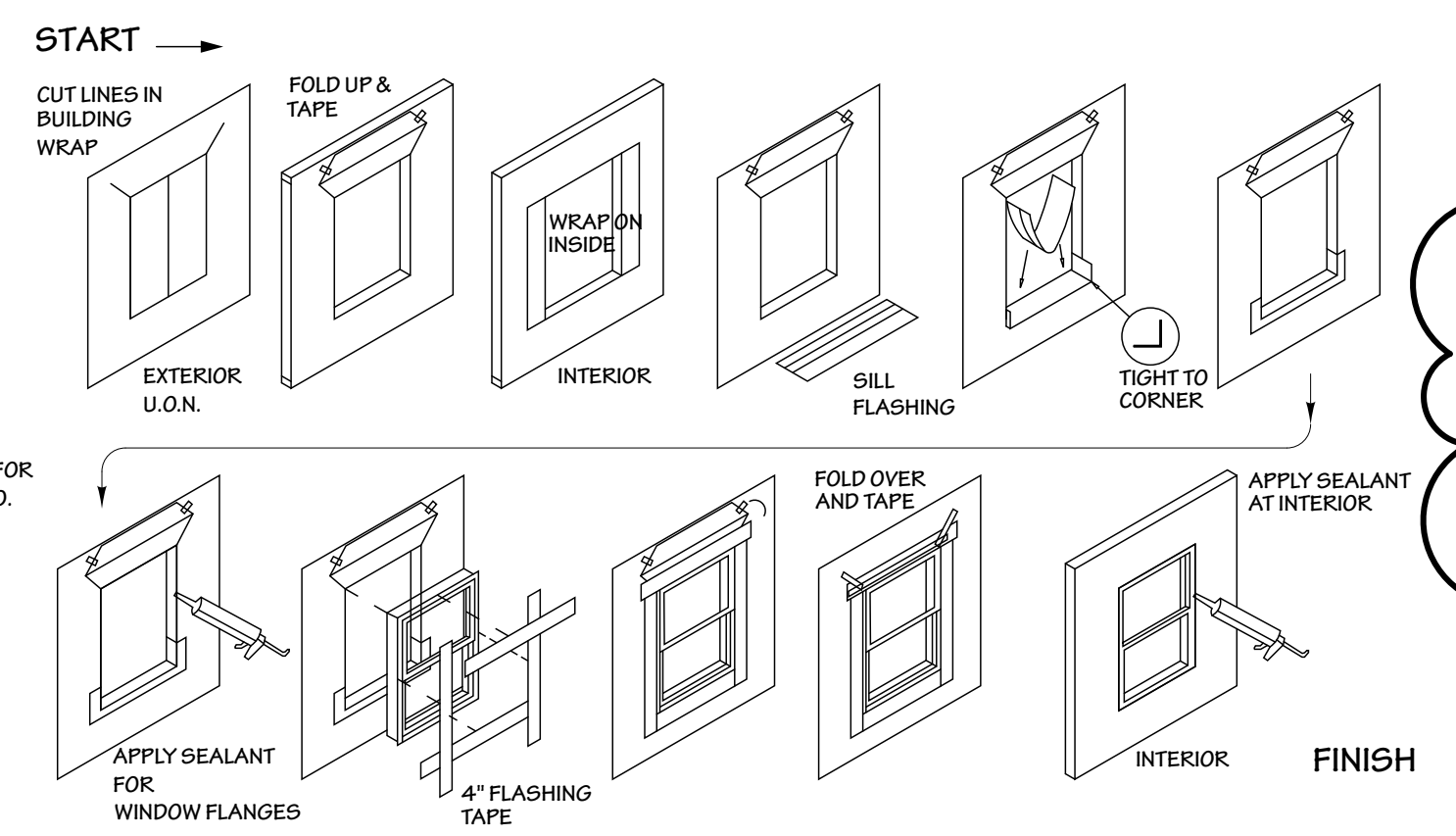


2 WINDOW SCHEDULE
SCALE: 1/2" = 1'-0"



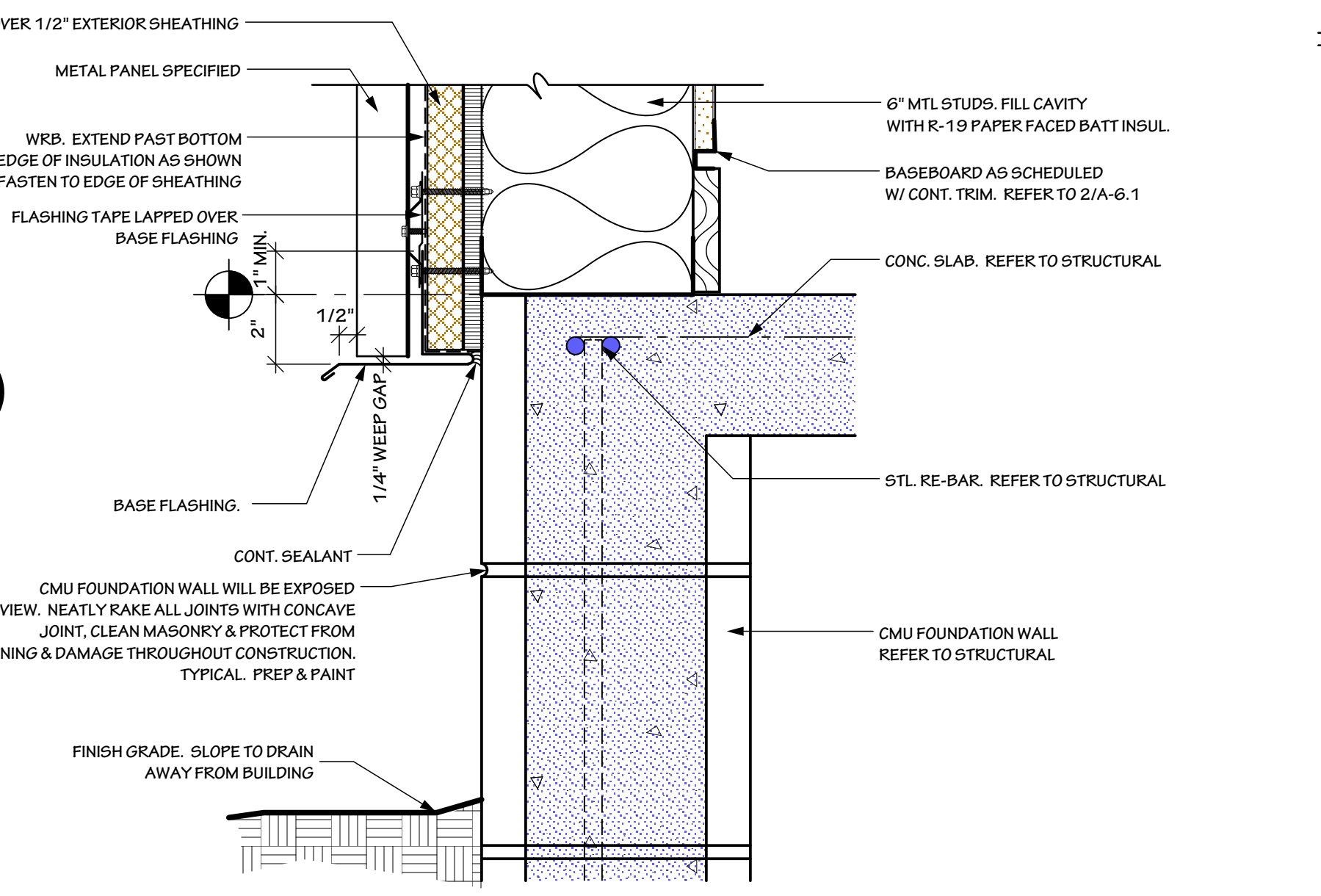
3 DOOR SCHEDULE
SCALE: 1/2" = 1'-0"

DOOR NUMBER	ROOM	ROOM NUMBER	DOOR KEY	SIZE (WIDTH X HEIGHT)	TYPE	FIRE RATING	FRAME TYPE	HARDWARE
100/2	NORTH GALLERY	100A	C	6'-0" X 7'-0"	ACW	-	ACW	HDW-1
100/2	SOUTH GALLERY	100B	C	6'-0" X 7'-0"	ACW	-	ACW	HDW-1
100A/1	JANITOR	100A	A	3'-0" X 7'-0"	HM	20 MIN	WOOD	HDW-2
101/1	MEN	101	A	3'-0" X 7'-0"	HM	20 MIN	WOOD	HDW-3
101/2	MEN ADA TLT	101A	A	3'-0" X 7'-0"	HM	-	WOOD	HDW-4
102/1	WOMEN	102	A	3'-0" X 7'-0"	HM	20 MIN	WOOD	HDW-3
102/2	WOMEN ADA TLT	102A	A	3'-0" X 7'-0"	HM	-	WOOD	HDW-4
103/1	BRIDE	103	A	3'-0" X 7'-0"	HM	20 MIN	WOOD	HDW-5
103/2	BRIDE	103	A	2'-8" X 7'-0"	HM	-	WOOD	HDW-5
104/1	BIN	104	D	6'-8" X 7'-4"	CUSTOM	REFER TO ALLOWANCES	-	-
104/2	BIN	104	B	3'-0" X 7'-0"	HM	-	WOOD	HDW-6
104A/1	EAST GAP	104A	A	2'-6" X 7'-0"	HM	-	WOOD	HDW-7
104A/2	EAST GAP	104A	A	2'-6" X 7'-0"	HM	-	WOOD	HDW-7
104A/3	EAST GAP	104A	A	2'-6" X 7'-0"	HM	-	WOOD	HDW-7
104A/4	EAST GAP	104A	A	2'-6" X 7'-0"	HM	-	WOOD	HDW-7
104A/5	EAST GAP	104A	A	2'-6" X 7'-0"	HM	-	WOOD	HDW-7
104B/1	WEST GAP	104B	A	2'-6" X 7'-0"	HM	-	WOOD	HDW-7
104B/2	WEST GAP	104B	A	2'-6" X 7'-0"	HM	-	WOOD	HDW-7
105/1	KITCHENETTE	105	B	3'-0" X 7'-0"	HM	-	WOOD	HDW-2
106/1	STORAGE	106	A	3'-0" X 7'-0"	HM	-	WOOD	HDW-2
107/1	REAR EXIT	107	E	3'-0" X 7'-0"	HM	-	HM	HDW-8

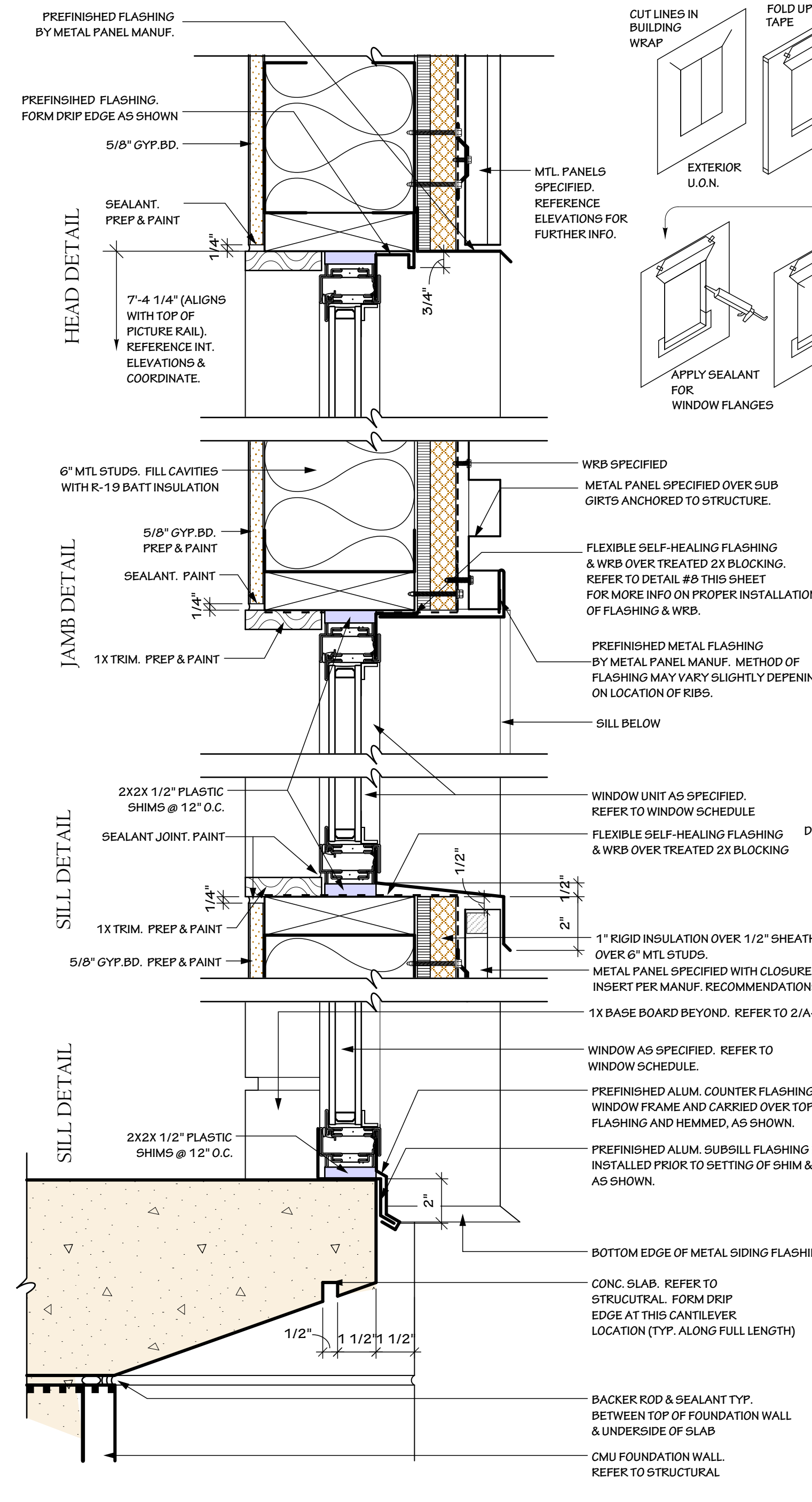


8 TYPICAL WINDOW FLASHING
NOT TO SCALE

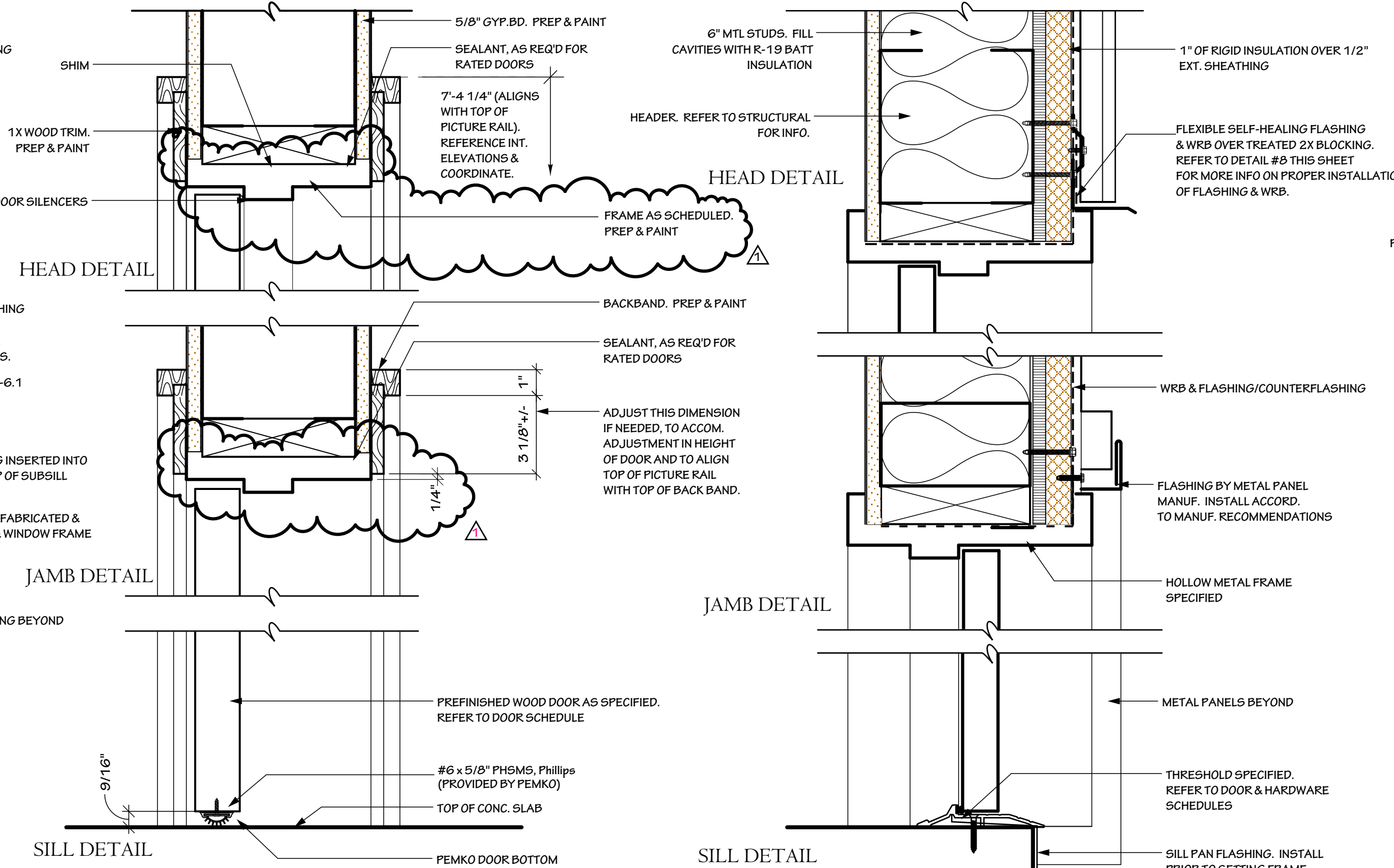
NOTE: THIS DETAIL IS TYPICAL FOR ALL EXTERIOR WINDOWS. IT SHOWS PROPER MANUF. RECOMMENDED MEANS OF FOLDING IN THE AIR & MOISTURE BARRIER AND FLASHING. BUILDERS SHALL FOLLOW THESE INSTRUCTIONS CAREFULLY. FLASHING NOT DONE PROPERLY WILL BE REJECTED



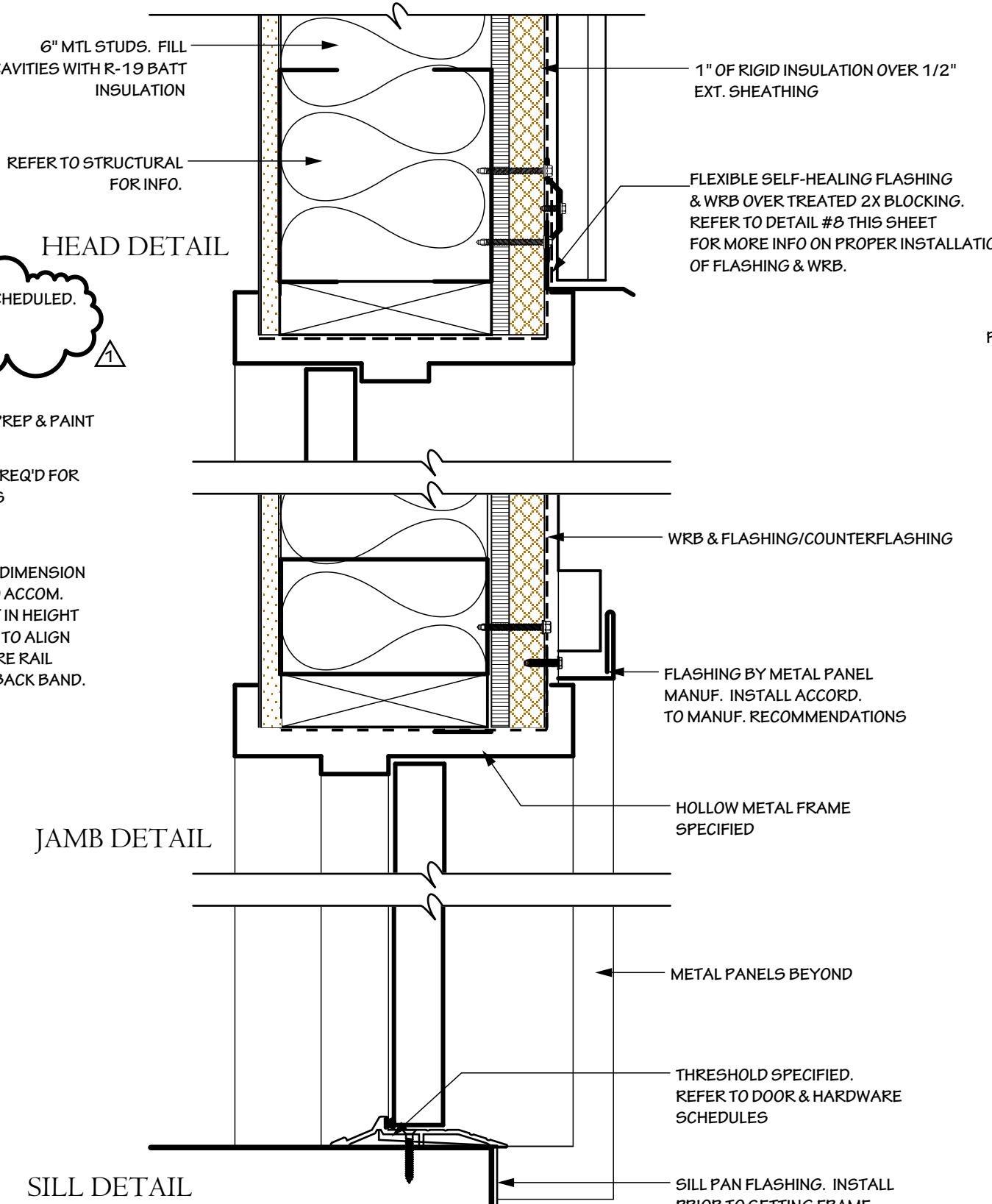
9 EDGE OF SLAB DETAIL (TYP.)
SCALE: 3" = 1'-0"



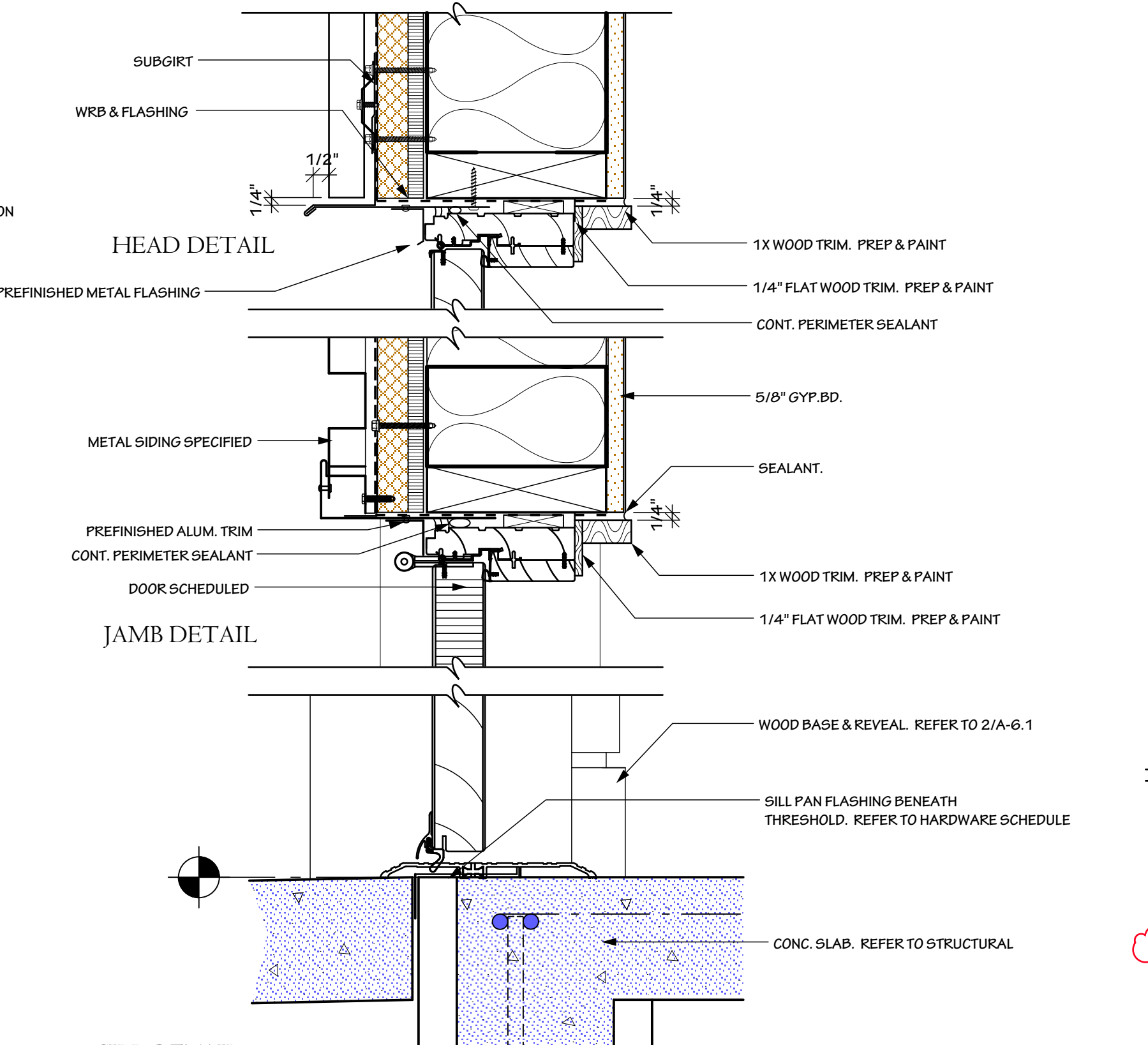
4 WINDOW DETAILS
3" = 1'-0"



5 INTERIOR DOOR DETAILS
3" = 1'-0"



6 EXTERIOR HM DOOR DETAILS
3" = 1'-0"



7 ENTRY DOOR DETAILS
3" = 1'-0"