

ADDENDUM NO. 4

PROJECT TITLE: Law Enforcement Training Academy Barracks
Black River Technical College
Pocahontas, Arkansas

OWNER: Black River Technical College
1410 Highway 304E
Pocahontas, AR 72455

OWNER'S REPRESENTATIVE: Dr. Eggensperger, President
(870) 248-4000

ARCHITECT: Brackett-Krennerich and Associates P.A.
100 East Huntington Avenue, Suite D
Post Office Box 1655
Jonesboro, Arkansas 72403-1655
(870) 932-0571 *office* •(870) 932-0975 *fax*

COMMISSION NUMBER: 2405

DATE OF ISSUE: September 19, 2024

BID DATE/LOCATION: September 24, 2024 at 2:00 p.m. C.D.S.T
Richard Gaines Technology Center, Room BT113
(The Pocahontas Room)
Black River Technical College
1410 Highway 304 East
Pocahontas, AR 72455

Contractor shall take note of the following listed revisions and/or additions to the drawings and specifications for the above referenced project and adjust the contract sum accordingly. These revisions are hereby made a part of said documents and subsequent construction as if therein included.

ARCHITECTURAL

1. Specifications: Section 01 2100 – Allowances; Section 1.04 Allowances Schedule
 - A. Add the following:
 - D. Section 01 4329 – Special Inspections: Include the stipulated sum of **\$10,000.00** for special inspections. Refer to drawing coversheet.
 - E. Include the stipulated sum of **\$5,000.00** for utility meter and gas connection.

2. Specifications: Section 08 7100 – Door Hardware

- A. Delete in its entirety and replace with pages 3 – 8 of this addendum.
- B. Clarifications:

Door 100 (Hardware Set 1)

WILL NOT have a card reader

WILL have ADA Actuator

Door 101 (Hardware Set 1)

WILL have ADA Actuator

Door 121.1, 200 (Hardware Set 5)

WILL have a card reader*

Door 121.2 (Hardware Set 3)

WILL have a card reader*

*Card reader by others (N.I.C.)

3. Drawings: Refer to Sheet A003

- A. Add Window Schedule detail. Page 9 of this addendum.

4. Drawings: Refer to Sheet A300; Detail 1

- A. Omit 3/8” cable railing and replace with 3/16” cable railing.

5. Drawings: Refer to Sheet A101

- A. Add Enlarged Second Floor Plan detail and Enlarged Clerestory Plan detail. Pages 10 – 11 of this addendum.

6. Drawings: Sheet A200

- A. Delete in its entirety and replace with page 12 of this addendum.

PLUMBING

7. General Question: Are sewer cleanouts required for each soil stack going to 2nd floor?

- A. Answer: Yes, code requires a cleanout at the base of every sewer stack.

SECTION 08 7100 DOOR HARDWARE

PART 1 GENERAL

1.01 SECTION INCLUDES

- A. Hardware for wood and hollow steel doors.
- B. Hardware for fire-rated doors.
- C. Key cylinders for aluminum doors.
- D. Thresholds.
- E. Weather-stripping, seals and door gaskets.

1.02 RELATED REQUIREMENTS

- A. Section 08 1113 - Hollow Metal Doors and Frames.
- B. Section 08 1416 - Flush Wood Doors.

1.03 REFERENCE STANDARDS

- A. ANSI/ICC A117.1 - American National Standard for Accessible and Usable Buildings and Facilities; International Code Council; 2003.
- B. DHI (LOCS) - Recommended Locations for Architectural Hardware for Standard Steel Doors and Frames; Door and Hardware Institute; 2004.
- C. DHI WDHS.3 - Recommended Locations for Architectural Hardware for Flush Wood Doors; Door and Hardware Institute; 1996.
- D. NFPA 80 - Standard for Fire Doors and Other Opening Protectives; 2010.
- E. NFPA 101 - Code for Safety to Life from Fire in Buildings and Structures; National Fire Protection Association; 2009.

1.04 ADMINISTRATIVE REQUIREMENTS

1.05 SUBMITTALS

- A. See Section 01 3323 - Submittals, for submittal procedures.
- B. Shop Drawings:
 - 1. Indicate locations and mounting heights of each type of hardware, schedules, catalog cuts.
 - 2. No templates are to be distributed until all Hardware Schedule has been approved by the architect.
 - 3. Approval of the schedule will not relieve the contractor of the responsibility of furnishing all necessary hardware.
 - 4. Copies of the approved schedule with necessary templates are to be furnished by the hardware suppliers to other affected subcontractor or material supplier.
 - 5. Include with each schedule a door index, list of related information to facilitate checking by architect.
- C. Keys: Deliver with identifying tags to City of Jonesboro by security shipment direct from hardware supplier.
- D. Warranty: Submit manufacturer's warranty and ensure that forms have been completed in City of Jonesboro's name and registered with manufacturer.

1.06 QUALITY ASSURANCE

- A. Manufacturer Qualifications: Company specializing in manufacturing the products specified in this section with minimum three years of documented experience.
- B. Hardware Supplier Qualifications: Company specializing in supplying commercial door hardware with three years of experience.

- C. Hardware Supplier Personnel: Employ an Architectural Hardware Consultant (AHC) to assist in the work of this section.

1.07 DELIVERY, STORAGE, AND HANDLING

- A. Package hardware items individually; label and identify each package with door opening code to match hardware schedule.

1.08 COORDINATION

- A. Coordinate the work with other directly affected sections involving manufacture or fabrication of internal reinforcement for door hardware.
- B. Furnish templates for door and frame preparation.
- C. Coordinate City of Jonesboro's keying requirements during the course of the Work.

1.09 WARRANTY

- A. See Section 01 7800 - Closeout Submittals, for additional warranty requirements.
- B. Provide five year warranty for door closers.

PART 2 PRODUCTS

2.01 MANUFACTURERS

2.02 GENERAL REQUIREMENTS FOR DOOR HARDWARE PRODUCTS

- A. Provide products that comply with the following:
 1. Applicable provisions of Federal, State, and local codes.
 2. ANSI/ICC A117.1, American National Standard for Accessible and Usable Buildings and Facilities.
 3. Applicable provisions of NFPA 101, Life Safety Code.
 4. Fire-Rated Doors: NFPA 80.
 5. All Hardware on Fire-Rated Doors: Listed and classified by UL as suitable for the purpose specified and indicated.
 6. Products Requiring Electrical Connection: Listed and classified by UL as suitable for the purpose specified and indicated.
 7. **NO substitutions on Sargent locks and Panics.**
 8. Hardware other than locks and panics may be approved by architect.
- B. Finishes: Identified in schedule at end of section.
 1. US 26D Satin Chrome, all hardware except items listed below.
 2. US 32D Satin Stainless Steel: Wall stops, push, pull and kick plates.
 3. Door Closers: Finish to be 689 aluminum painted.

2.03 KEYING

- A. Door Locks: All cylinders and lock cores provided in this phase of construction to have Sargent 'RG' keyway (facility standard).
 1. Establish new master key system for this phase of construction.
 2. Keying of specific spaces to be determined by owner.
- B. Supply keys in the following quantities:
 1. 6 master keys.
 2. 3 change keys for each lock.
 3. Stamp key bows "Do not duplicate"

PART 3 EXECUTION

3.01 EXAMINATION

- A. Verify that doors and frames are ready to receive work; labeled, fire-rated doors and frames are present and properly installed, and dimensions are as indicated on shop drawings.
- B. Verify that electric power is available to power operated devices and of the correct characteristics.

3.02 INSTALLATION

- A. Install hardware in accordance with manufacturer's instructions and applicable codes.
- B. Use templates provided by hardware item manufacturer.
- C. Install hardware on fire-rated doors and frames in accordance with code and NFPA 80.
- D. Mounting heights for hardware from finished floor to center line of hardware item:
 - 1. For steel doors and frames: Comply with DHI "Recommended Locations for Architectural Hardware for Steel Doors and Frames."
 - 2. For steel doors and frames: See Section 08 1113.
 - 3. For wood doors: Comply with DHI "Recommended Locations for Architectural Hardware for Wood Flush Doors."
 - 4. Wood doors: See Section 08 1416.

3.03 ADA GUIDELINES

- A. All hardware must meet guidelines as stated in the Americans with Disabilities Act. This includes locksets, closers, thresholds, etc.
- B. Rough-in for all hardware to be located within handicap reach limitations as outlined in the Americans with Disabilities Act.
- C. Note: Door thresholds and closers must meet ADA requirements.

3.04 FIELD QUALITY CONTROL

- A. Hardware supplier to inspect installation and certify that hardware and installation has been furnished and installed in accordance with manufacturer's instructions and as specified.

3.05 ADJUSTING

- A. Adjust hardware for smooth operation.

3.06 PROTECTION

- A. Do not permit adjacent work to damage hardware or finish.

3.07 SCHEDULE

- A. See attached.

2.01 MATERIALS

Manufacturer's Index:

H.....HAGER
MMcKINNEY
N.....NORTON
R.....RIXSON
SSARGENT – NO SUBSTITUTIONS

2.02 HARDWARE SCHEDULE

The following is a general listing of hardware requirements and is not intended to be a final hardware schedule. Any items of hardware required by good practice or to meet state and local codes shall be furnished whether or not specifically called out in the below listed groups.

Abbreviations: Alum = Clear / Mill Aluminum
 DW = Door Width
 DH = Door Height
 DOW = Door Opening Width
 DOH = Door Opening Height
 TBD = To Be Determined

SET 1		Door(s) 100	
<i>Each To Have:</i>			
H	2 ea	Continuous Hinge	780-224 x DBZ
S	2 ea	Exit Devices -	AD8410 x 106/113 x 862 x 10B
N	1 ea	Door Closer	UNI8501 x 695
N	1 ea	Automatic Door Opener	6920- RH – RF1 x 695
N	1 ea	Vestibule switch	675
N	1 ea	Switch Post	577 x 578

- BALANCE OF HARDWARE BY ALUMINUM DOOR SUPPLIER

SET 2		Door(s) 101	
<i>Each To Have:</i>			
H	2 ea	Continuous Hinge	780-224 x DBZ
S	2 ea	Push / Pull bar	159D
N	1 ea	Door Closer	UNI 8501 x 695
N	1 ea	Automatic Door Opener	6920- RH – RF1 x 695
N	1 ea	Vestibule switch	675
N	1 ea	Switch Post	577 x 578

- BALANCE OF HARDWARE BY ALUMINUM DOOR SUPPLIER

SET 3		Door(s) 121.2	
<i>Each To Have:</i>			
H	2 ea	Continuous Hinge	780-224 x ETW8 x DBZ
S	2 ea	Exit Device - Electrified	56 8810 x US32D
N	2 ea	Door Closer	UNI 8501 x 689
S	1 ea	Removable Mull	L980S
H	2 ea	Weatherstrip	891SV (DOW x DOH) Alum
H	1 ea	Drip Cap	810S (DOW + 4") Alum
H	1 ea	Threshold	412S x DW x Alum
H	2 ea	Sweep Strip	750SN x DW x Alum

- Card Readers By others

SET 4		Door(s) 119, 145,	
<i>Each To Have:</i>			
M	3 ea	Hinge	TA2714 4.5" x 4.5" US26D
S	1 ea	Mortise Lockset (Storeroom)	8251 x LNL x US26D
N	1 ea	Door Closer	UNI 8501 x 689
H	1 ea	Kickplate	190S 10 x DW x US32D
H	1 ea	Weatherstrip	891SV (DOW x DOH) Alum
H	1 ea	Drip Cap	810S (DOW + 4") Alum
H	1 ea	Threshold	541SV x DW x Alum
H	1 ea	Sweep Strip	750SN x DW x Alum

SET 5		Door(s) 121.1, 200	
<i>Each To Have:</i>			
M	4 ea	Hinge	TA2714 4.5" x 4.5" US26D
M	2 ea	Hinge – Elec	TA2714 ETW8 4.5" x 4.5" US26D
S	2 ea	Exit Device	12 56 8813 x ETL x DW x US32D
S	1 ea	Removable Mull	980S x 689
N	2 ea	Door Closer	UNI 8501 x 689
H	2 ea	Kickplate	190S 10 x DW x US32D
H	2 ea	Wall Stop	236W x US32D
SC	1 ea	Power Supply	BPS-24-1
H	2 ea	Silencers	307D

- Card Reader by others

SET 6		Door(s) 102, 105, 106, 109, 110, 113, 114, 117, 118, 141, 138, 137, 134, 133, 130, 129, 126, 125, 201, 204, 205, 208, 209, 212, 213, 216, 217, 223, 224, 227, 228, 231, 232, 235, 236, 239,	
<i>Each To Have:</i>			
M	3 ea	Hinge	TA2714 4.5" x 4.5" US26D
S	1 ea	Lockset (Office / Entry)	28-7G05 LL x US26D
N	1 ea	Door Closer	8501 x 689
H	1 ea	Kickplate	190S 10 x DW x US32D
H	1 ea	Automatic Door Bottom	740S x CLR
H	1 ea	Smoke Seal	722S
H	1 ea	Wall Stop	236W x US32D

SET 7		Door(s) 220, 221, 122, 123, 142	
<i>Each To Have:</i>			
M	3 ea	Hinge	TA2714 4.5" x 4.5" US26D
S	1 ea	Lockset (Storeroom)	28-7G04 LL x US26D
N	1 ea	Door Closer	8501 x 689
H	1 ea	Kickplate	190S 10 x DW x US32D
H	1 ea	Wall Stop	236W x US32D
H	1 ea	Smoke Seal	722S

SET 8	Door(s) 103.1, 103.2, 107.1, 107.2, 111.1, 111.2, 115.1, 115.2, 127.2, 127.1, 132.2, 132.1, 136.2, 140.2, 140.1, 202.1, 202.2, 206.1, 206.2, 210.1, 210.2, 214.1, 214.2, 205.1, 205.2, 229.2, 229.1, 233.1, 233.2, 237.1, 237.2,		
<i>Each To Have:</i>			
M	3 ea	Hinge	TA2714 4.5" x 4.5" US26D
S	1 ea	Lockset (Passage)	7U15 LL x US26D
H	1 ea	Wall Stop	236W x US32D
H	3 ea	Silencers	307D

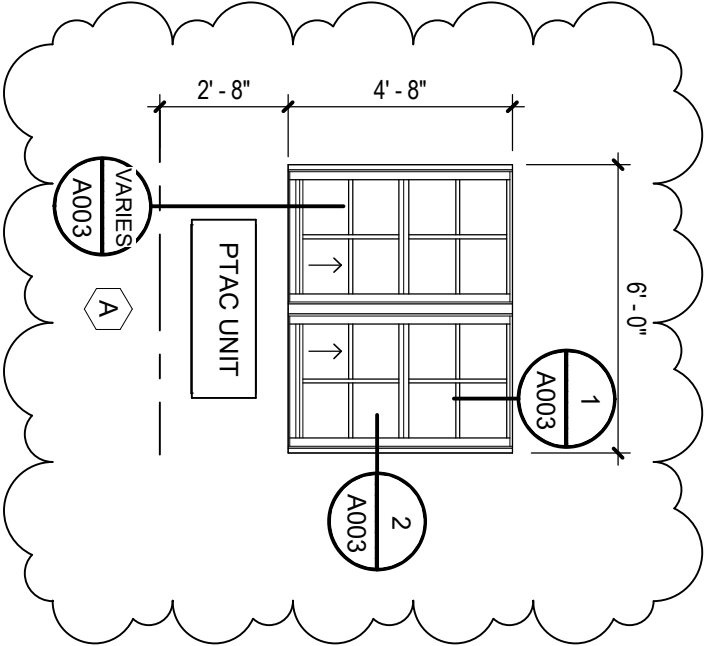
SET 9	Door(s) 104, 108, 112, 116, 120, 124, 144, 140, 135, 139, 203, 207, 211, 215, 218, 222, 226, 230, 234, 238,		
<i>Each To Have:</i>			
M	3 ea	Hinge	TA2714 4.5" x 4.5" US26D
S	1 ea	Lockset (Privacy)	7U65 LL x US26D
H	1 ea	Wall Stop	236W x US32D
H	3 ea	Silencers	307D

SET 10	Door(s) 240		
<i>Each To Have:</i>			
M	3 ea	Hinge	TA2714 4.5" x 4.5" US26D
S	1 ea	Lockset (Classroom)	28-7G37 LL x US26D
N	1 ea	Door Closer	8501 x 689
H	1 ea	Kickplate	190S 10 x DW x US32D
H	1 ea	Wall Stop	236W x US32D
H	3 ea	Silencers	307D

SET 11	Door(s) 143		
<i>Each To Have:</i>			
M	3 ea	Hinge	TA2714 4.5" x 4.5" US26D
S	1 ea	Lockset (Passage)	7U15 LL x US26D
H	1 ea	Indicator Deadbolt	3216 x US26D
N	1 ea	Door Closer	8501 x 689
H	1 ea	Wall Stop	236W x US32D
H	3 ea	Silencers	307D

Note: Door thresholds and closers must meet ADA requirements.

Law Enforcement Training Academy Barracks
Black River Technical College
Pocahontas, Arkansas
Commission No. 2405



Window Schedule

SCALE: 1/4" = 1'-0"

Addendum # 4

COMMISSION NUMBER: 2405

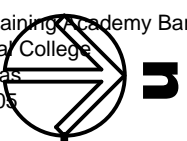
SHEET: A003

DATE: 9/19/24

LAW ENFORCEMENT TRAINING ACADEMY BARRACKS
BLACK RIVER
TECHNICAL COLLEGE
Pocahontas, Arkansas

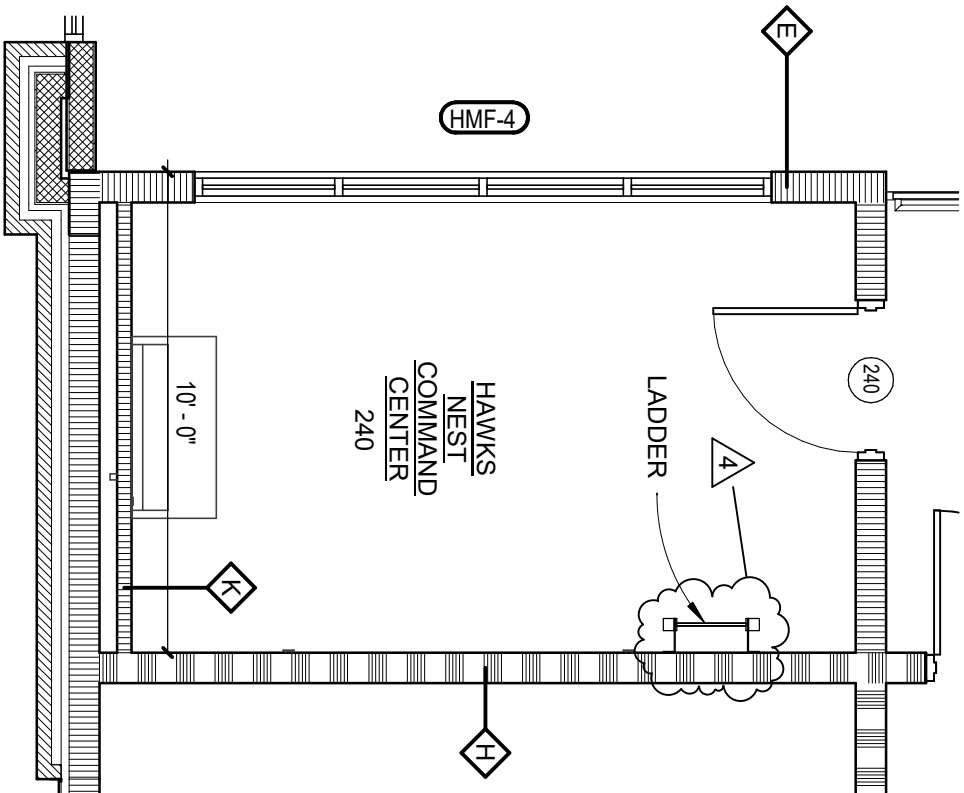
BRACKETT
KRENNERICH
architects


Law Enforcement Training Academy Barracks
Black River Technical College
Pocahontas, Arkansas
Commission No. 2405



enlarged second floor plan

SCALE: 1/4" = 1'-0"



Addendum # 4

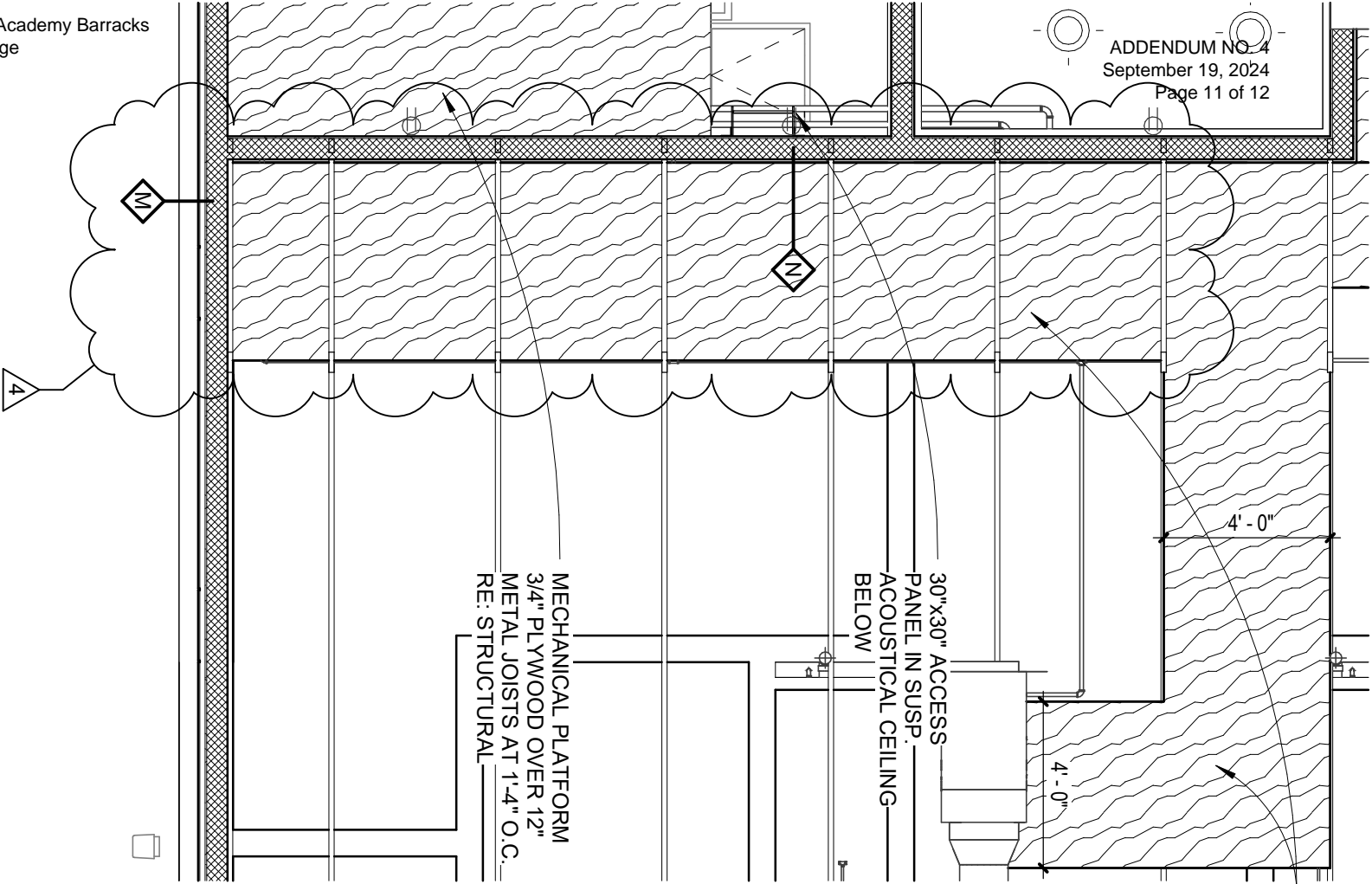
COMMISSION NUMBER: 2405

SHEET: A101

DATE: 9/19/24

LAW ENFORCEMENT TRAINING ACADEMY BARRACKS
BLACK RIVER
TECHNICAL COLLEGE
Pocahontas, Arkansas

BRACKETT
KRENNERICH
architects



3/4" PLYWOOD WALKWAY TO
MECHANICAL UNIT IN ATTIC PROVIDE
8" METAL JOISTS AT 1'-4" O.C. MAX
RE: STRUCTURAL

enlarged clerestory plan

SCALE: 1/4" = 1'-0"

Law Enforcement Training Academy Barracks
Black River Technical College
Pocahontas, Arkansas
Commission No. 2405

LAW ENFORCEMENT TRAINING ACADEMY BARRACKS		BRACKETT KRENNERICH architects	
BLACK RIVER TECHNICAL COLLEGE		Pocahontas, Arkansas	
ADDENDUM # 4	COMMISSION NUMBER: 2405	SHEET: A101	DATE: 9/19/24



LAW ENFORCEMENT TRAINING ACADEMY BARRACKS
BLACK RIVER
TECHNICAL COLLEGE
 Pocahontas, Arkansas



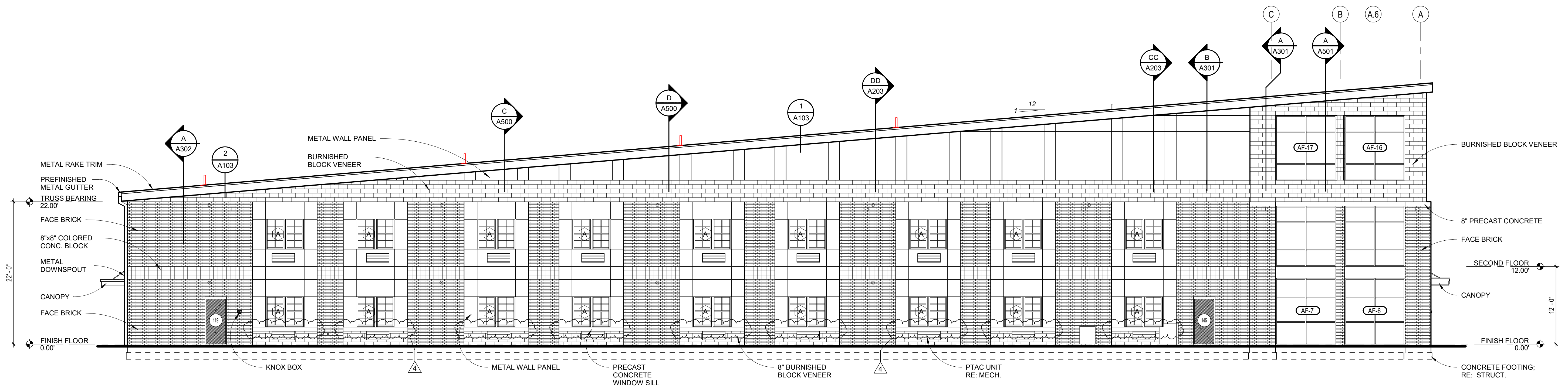
Revision Schedule	Issued by
Tag	Rev. Date
4	07 OCT 08



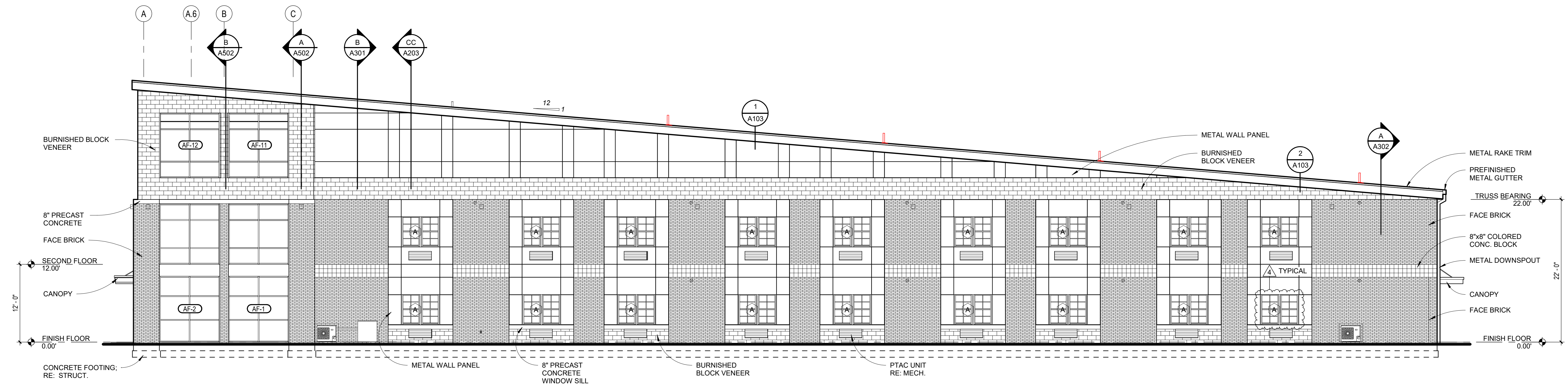
Commission Number
2405

A200

Date: August 23, 2024



north building elevation
 SCALE: 1/8" = 1'-0"



south building elevation
 SCALE: 1/8" = 1'-0"