

ADDENDUM NO. 5

PROJECT TITLE: Law Enforcement Training Academy Barracks
Black River Technical College
Pocahontas, Arkansas

OWNER: Black River Technical College
1410 Highway 304E
Pocahontas, AR 72455

OWNER'S REPRESENTATIVE: Dr. Eggensperger, President
(870) 248-4000

ARCHITECT: Brackett-Krennerich and Associates P.A.
100 East Huntington Avenue, Suite D
Post Office Box 1655
Jonesboro, Arkansas 72403-1655
(870) 932-0571 *office* •(870) 932-0975 *fax*

COMMISSION NUMBER: 2405

DATE OF ISSUE: September 20, 2024

BID DATE/LOCATION: September 24, 2024 at 2:00 p.m. C.D.S.T
Richard Gaines Technology Center, Room BT113
(The Pocahontas Room)
Black River Technical College
1410 Highway 304 East
Pocahontas, AR 72455

Contractor shall take note of the following listed revisions and/or additions to the drawings and specifications for the above referenced project and adjust the contract sum accordingly. These revisions are hereby made a part of said documents and subsequent construction as if therein included.

ARCHITECTURAL

1. Specifications: Section 08 5113 – Aluminum Windows
 - A. Section 2.04 Components; add the following:
 - O. Insect Screens:
 1. Tubular extruded aluminum frames shall meet the requirements of ANSI/SMA 1004. Finish to match window frames.
 2. Aluminum cloth shall comply with GSA-FS-RR-W-365 and USDC-CS-138 with 18 x 16 mesh. Cloth color shall be charcoal grey.

2. Drawings: Sheet A003 – Aluminum Frame Schedule, Window Schedule, Window Details
 - A. Delete in its entirety and replace with page 4 of this addendum.
3. Drawings: Sheet 100 – First Floor Plan
 - A. Delete in its entirety and replace with page 5 of this addendum.
4. Drawings: Sheet 101 – Second Floor Plan
 - A. Delete in its entirety and replace with page 6 of this addendum.

MECHANICAL

5. Drawings: Sheet M101 – HVAC Plans
 - A. Delete in its entirety and replace with page 7 of this addendum.
6. Question: 1.5 ton cassette in work room is not shown on schedule M101.
 - A. There are only 2 wall mounted fan coil systems.
7. Question: General note 33 requires duct pressure test. Is this actually required? System required certified air duct test and balance, why would both be required?
 - A. A pressure test shall not be required for design pressures.
8. Question: On Sheet M101 there is a notation pointing to F-1 stating to transition to spiral duct, however there is also a keyed note indicating fabric duct. Which is the correct material metal spiral or fabric? If metal spiral, what is the number and type of grills to be utilized?
 - A. Keyed note 2 indicates fabric duct requirement.
9. Question: On Sheet M101 concerning F-3 are we to assume open ended supply duct with no grill? And open return with no grill?
 - A. Yes, intent is for furnace to be hard ducted for a few feet for better throw and terminate open.

PLUMBING

10. Drawings: Sheet P101 – Plumbing Plans
 - A. Delete in its entirety and replace with page 8 of this addendum.
11. Drawings: Sheet P102 – Enlarged Plumbing Plans and Riser
 - A. Delete in its entirety and replace with page 9 of this addendum.

ELECTRICAL

12. Drawings: Sheet E102 – Electrical Light Fixture Schedule
A. Delete in its entirety and replace with page 10 of this addendum.
13. Drawings: Sheet E103 – Electrical Site Plan
A. Delete in its entirety and replace with page 11 of this addendum.

FIRE PROTECTION

14. Question: Part 1 (Pg 21 0000 2) A-1.04 Quality Assurance, Item 1 & 2. Requires a PE to do all design and calculations. This is not a norm for Fire Sprinkler Contractors to have on staff. Will NICET Certified Level 3 & 4 meet this requirement?
A. Yes.
15. Question: Part 1 (Pg 21 0000 2) C – 1.04 Quality Assurance, Item 2. NFPA 14 Sandpipes and Hose Systems. Will this be required in a 2 story building? (NOTE: Not required by NFPA or code)
A. Omit if not required.
16. Question: Part 3 (Pg 21 0000 8) 3.05 Interior Piping Installation, Item F. Install sprinkler zone control valves. This is not required in a 2 story building. Is this to be part of our bid?
A. Omit if not required.
17. Question: Part 3 (Pg 21 0000 8) Monitor Installation. Is the alarm system to be part of the fire sprinkler bid?
A. This will be a decision made by the general contractor.



LAW ENFORCEMENT TRAINING ACADEMY BARRACKS
BLACK RIVER
TECHNICAL COLLEGE
 Pocahontas, Arkansas

BRACKETT
KRENNERICH
 architects

| Revision Schedule | | Issued |
|-------------------|------------------|-----------|
| Tag | Rev. Description | Rev. Date |
| 5 | Revision 5 | Date 5 |

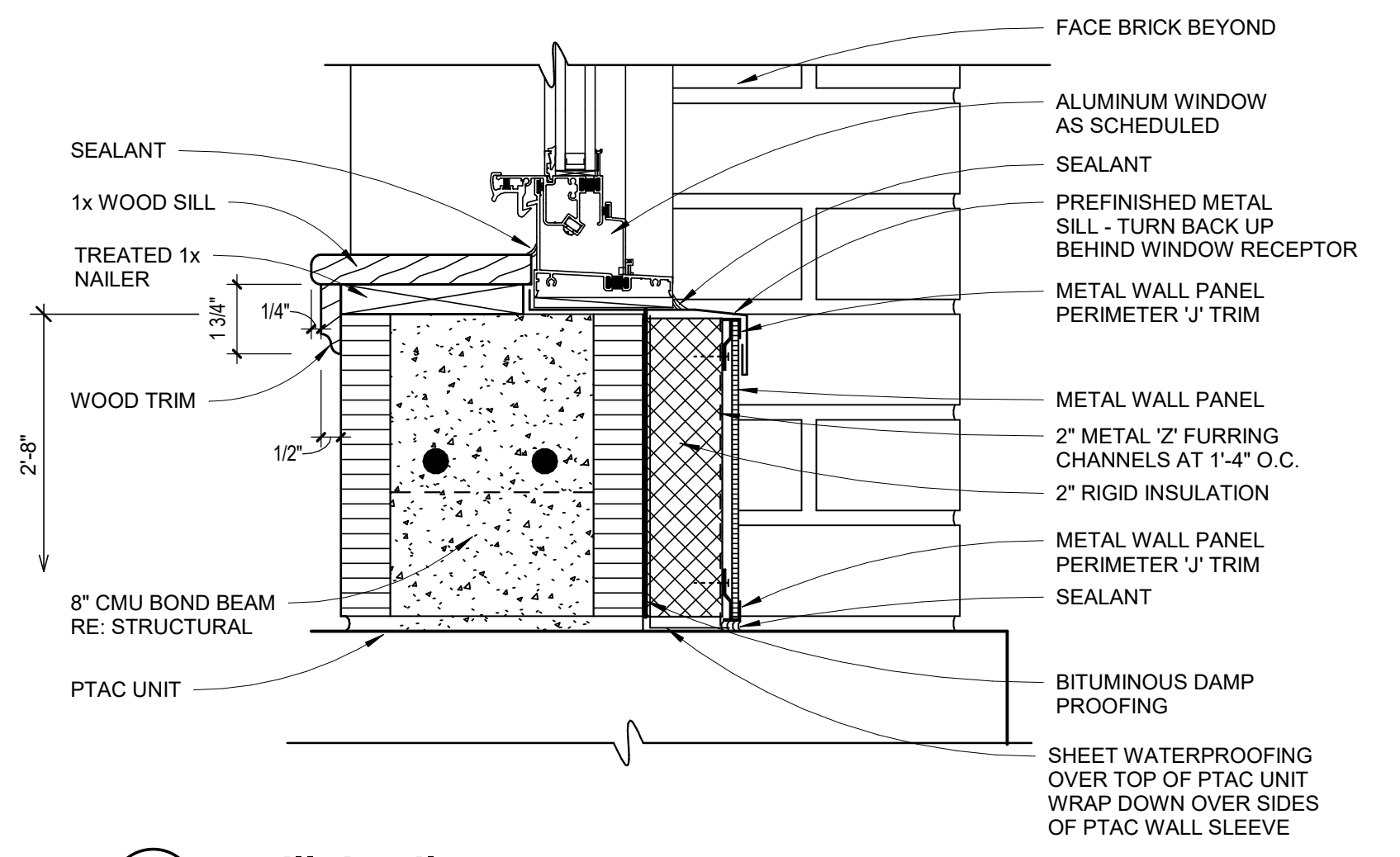


Commission Number
2405

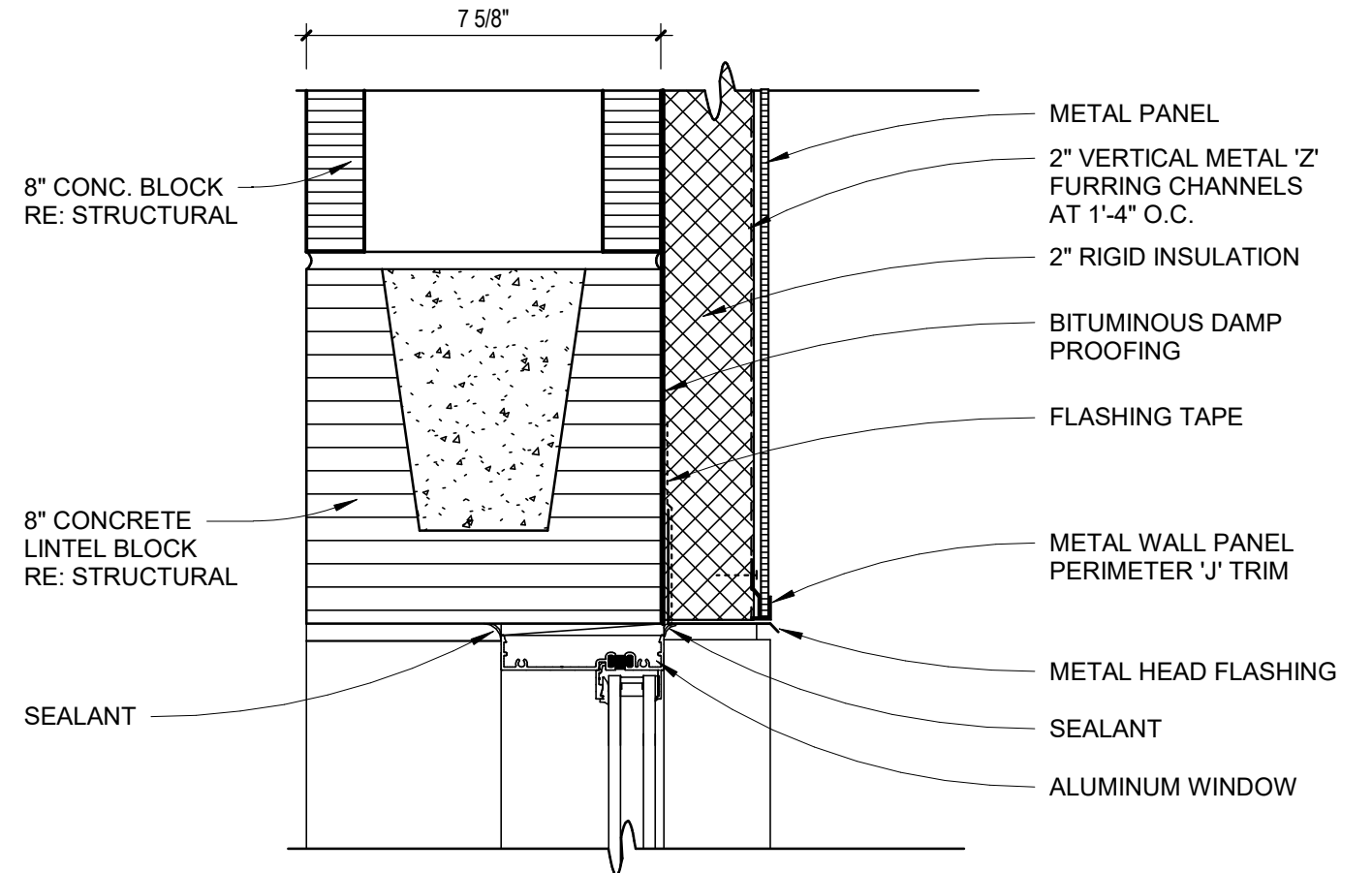
A003

Date: August 23, 2024

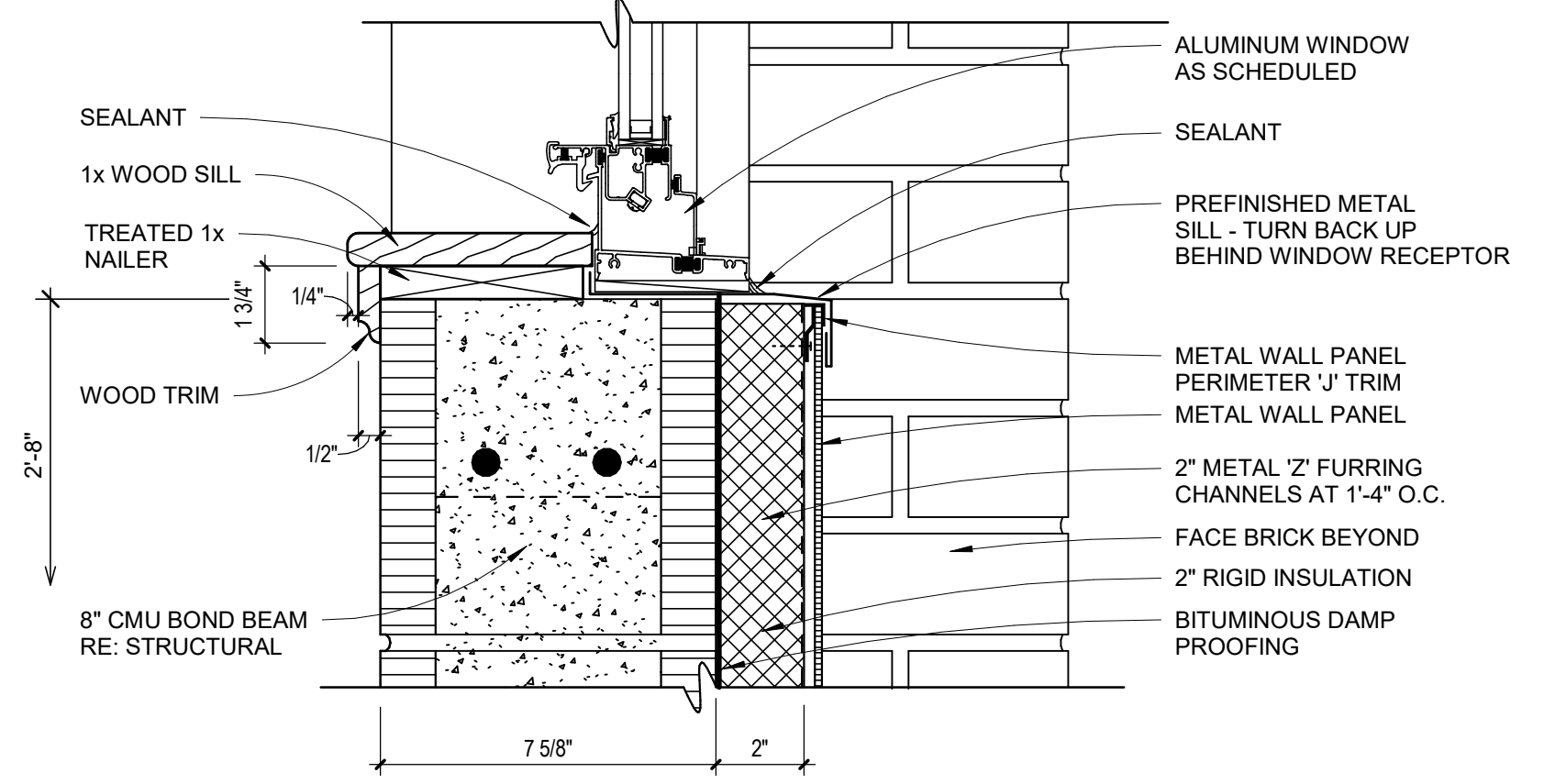
www.brtechis.com
 870-932-0975
 100 East Huntington Ave. Suite D P.O. Box 1655
 ALUMINUM FRAME SCHEDULE, WINDOW SCHEDULE, WINDOW DETAILS



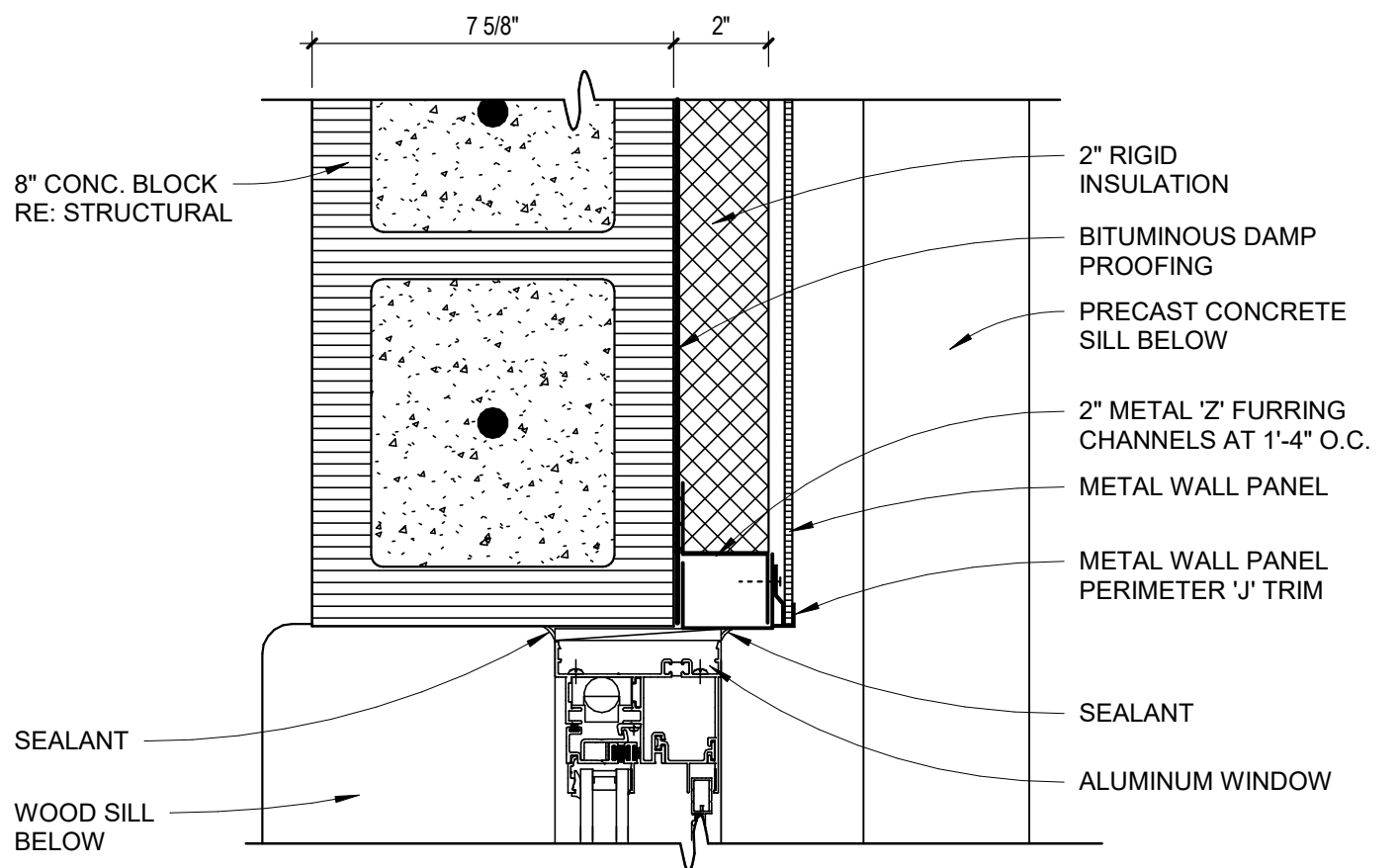
3 sill detail
 SCALE: 3" = 1'-0"



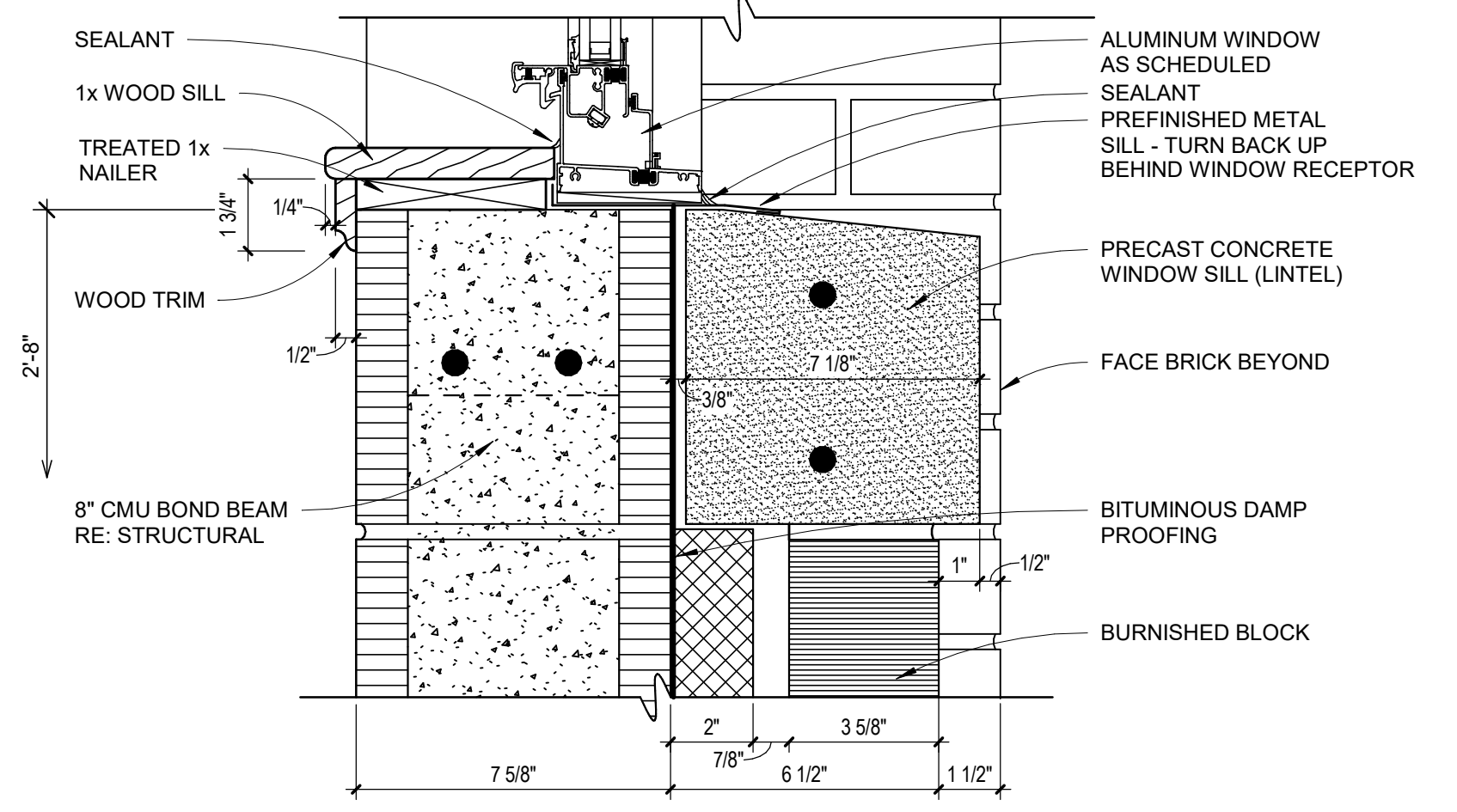
1 head detail
 SCALE: 3" = 1'-0"



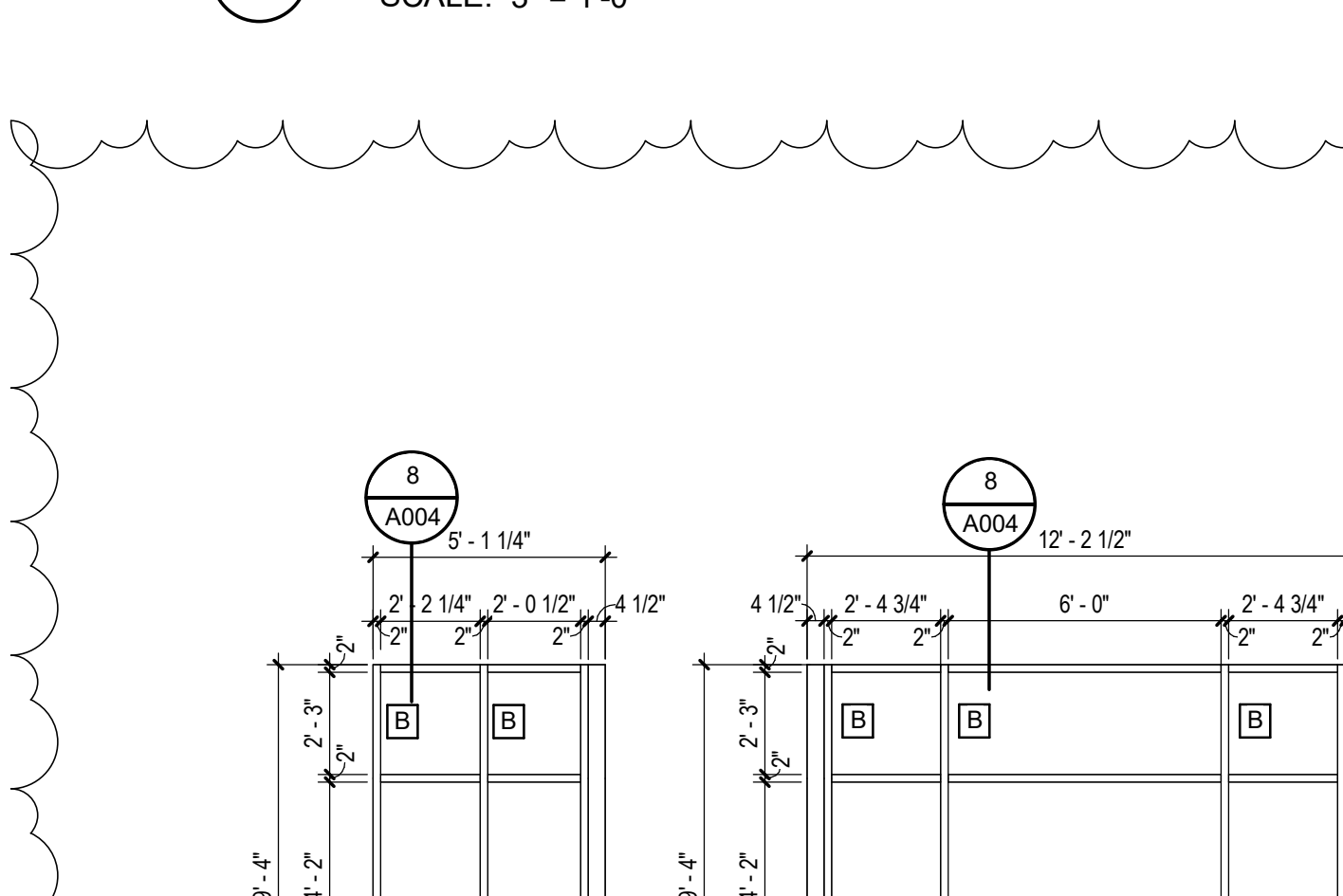
4 sill detail
 SCALE: 3" = 1'-0"



2 jamb detail
 SCALE: 3" = 1'-0"



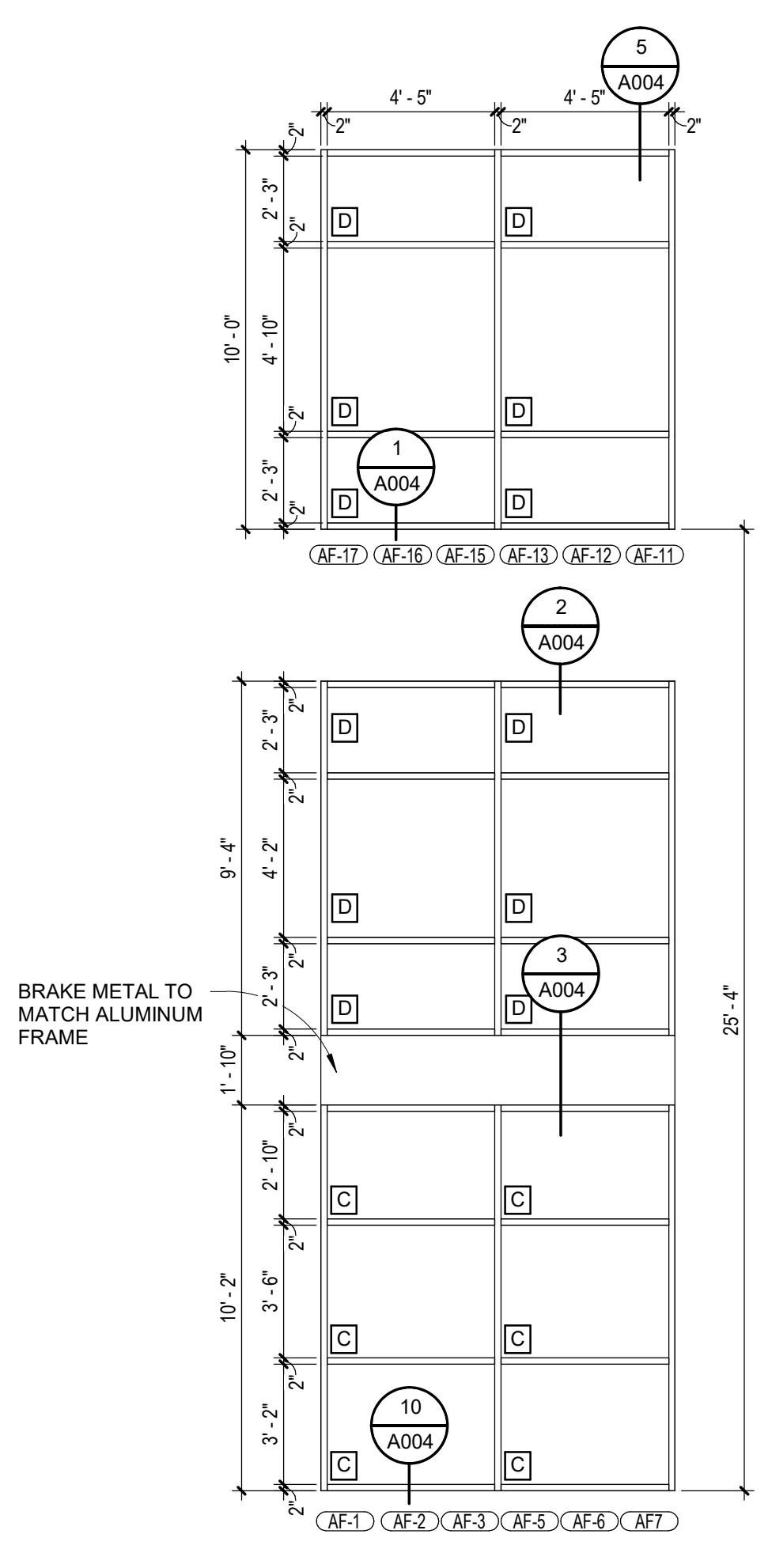
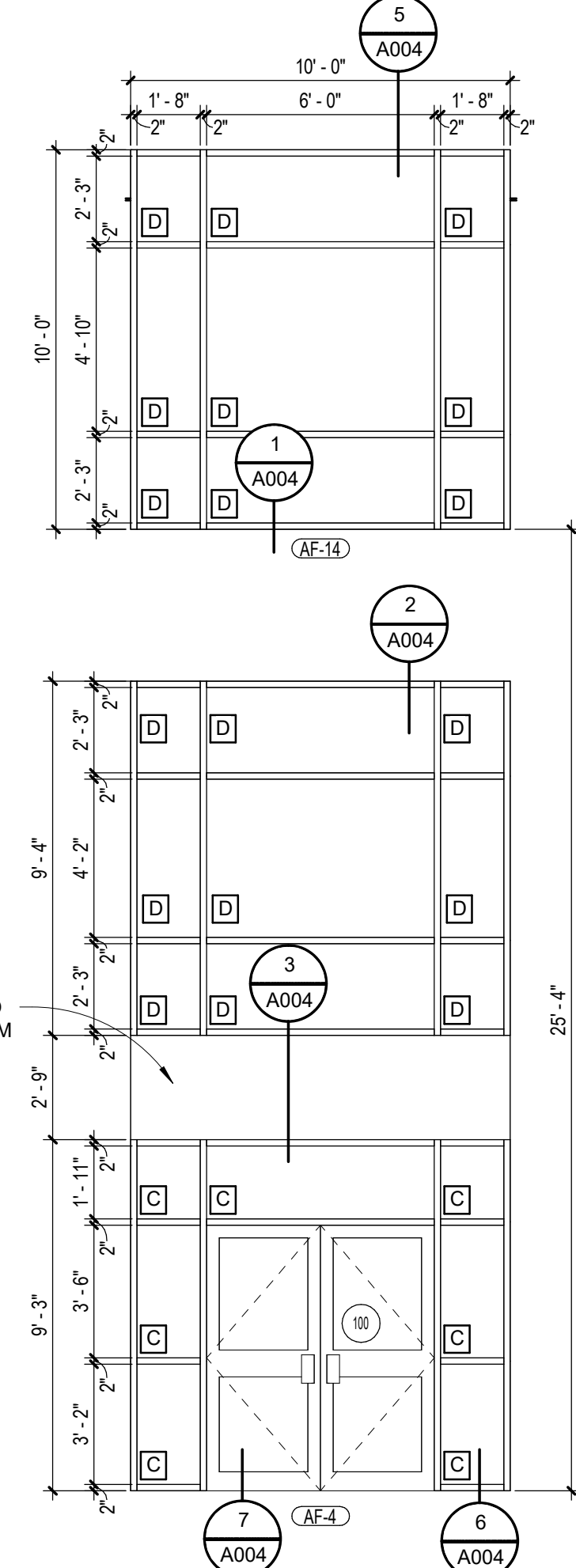
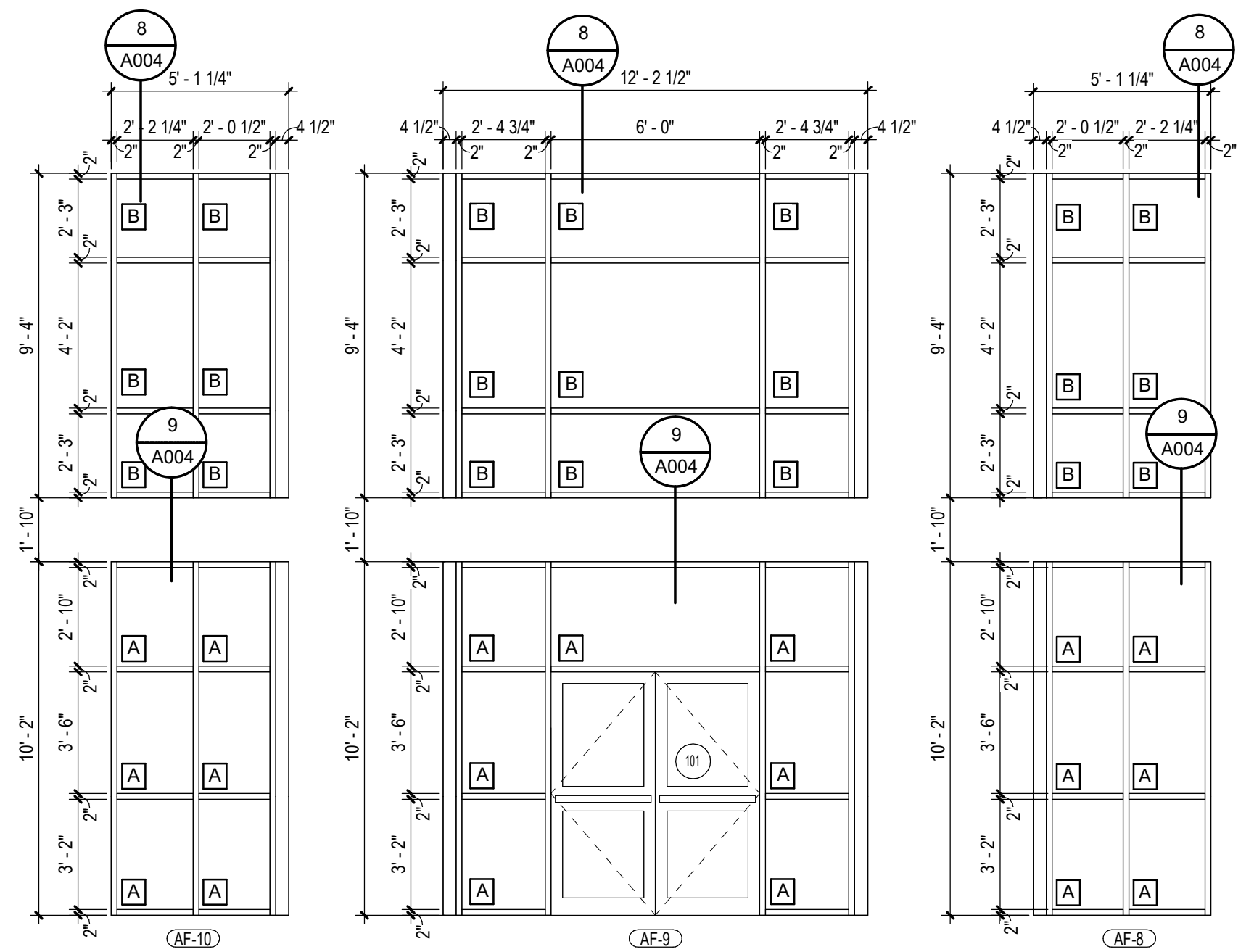
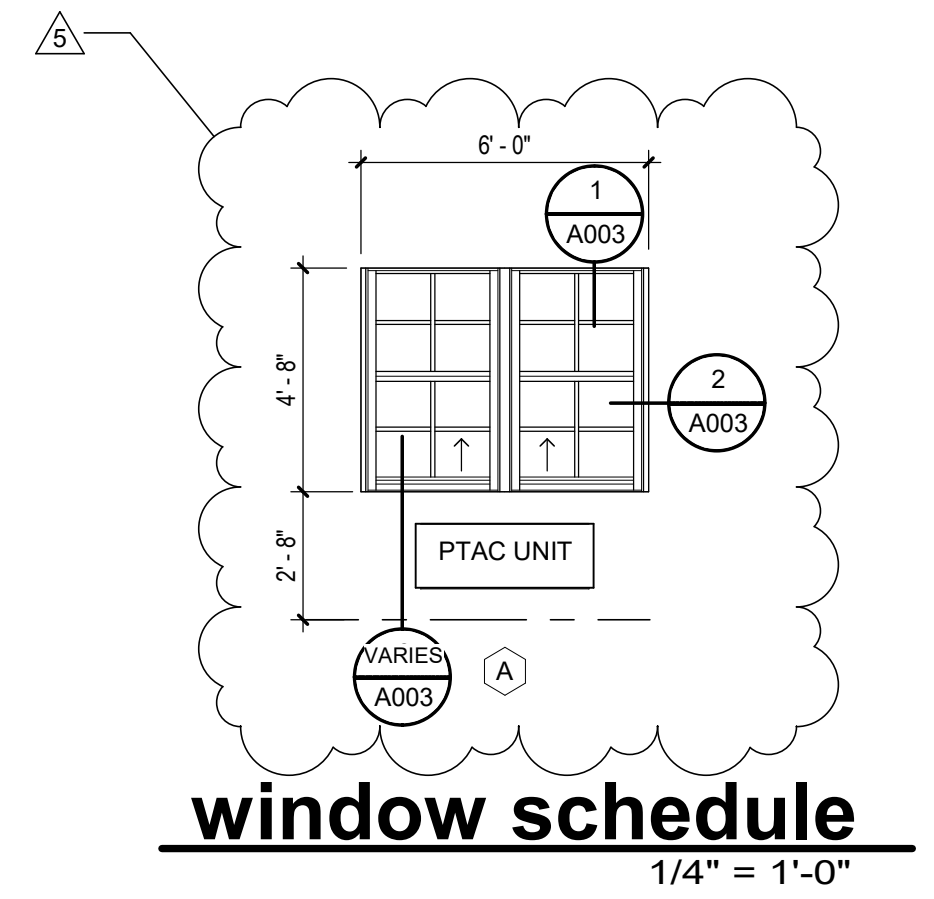
5 sill detail
 SCALE: 3" = 1'-0"



6 sill detail
 SCALE: 3" = 1'-0"

GLAZING LEGEND

| | |
|---|--|
| A | 1/4" TEMPERED CLEAR POLISHED PLATE GLASS |
| B | 1/4" CLEAR POLISHED PLATE GLASS |
| C | 1" TEMPERED INSULATED GLASS |
| D | 1" INSULATED GLASS |



aluminum frame schedule
 1/4" = 1'-0"

D:\Kieron\Documents\Revit Documents\2405 BRTC PB CD 08-07-2024
 9/20/2024 2:10:13 PM

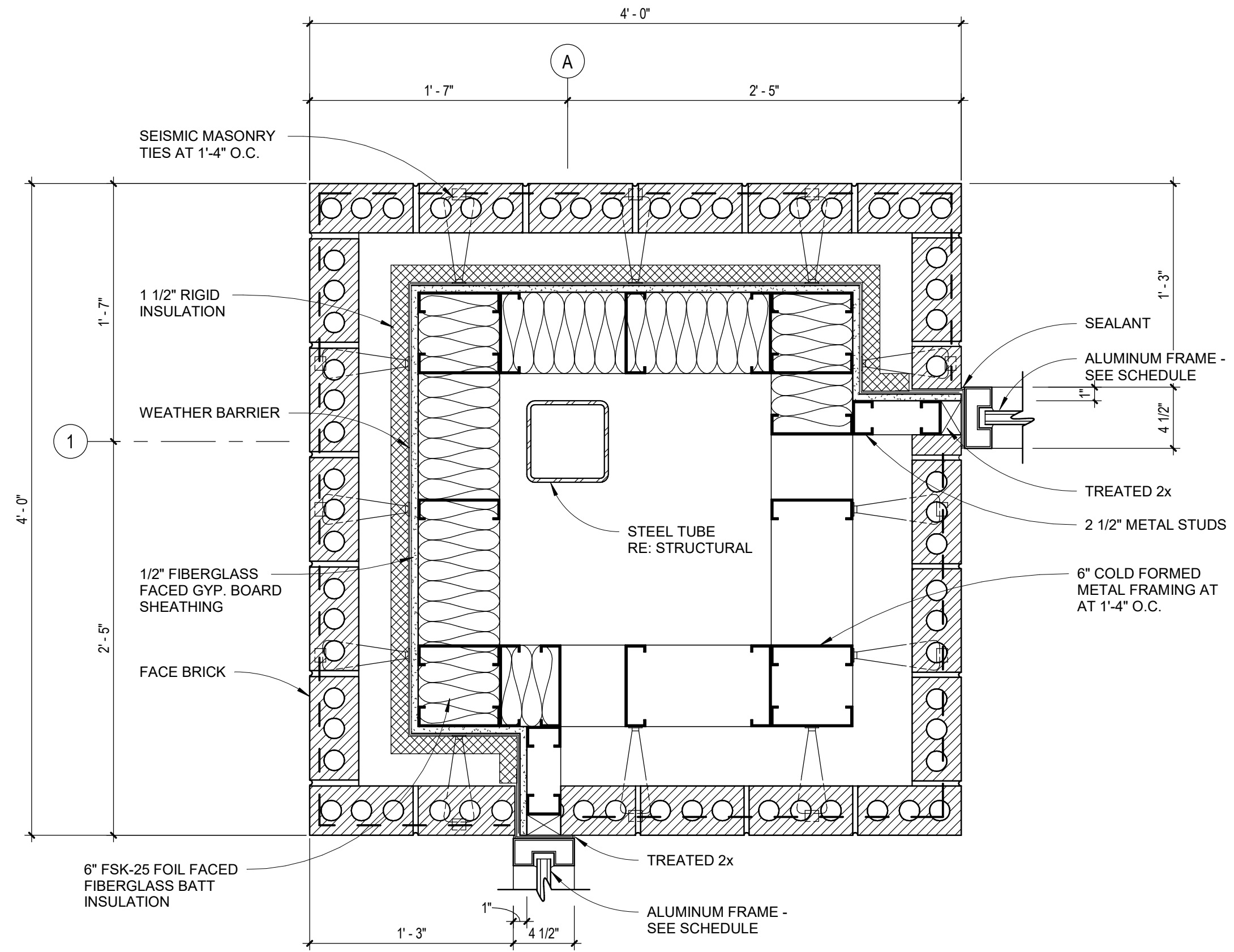


LAW ENFORCEMENT TRAINING ACADEMY BARRACKS
BLACK RIVER
TECHNICAL COLLEGE
 Pocahontas, Arkansas

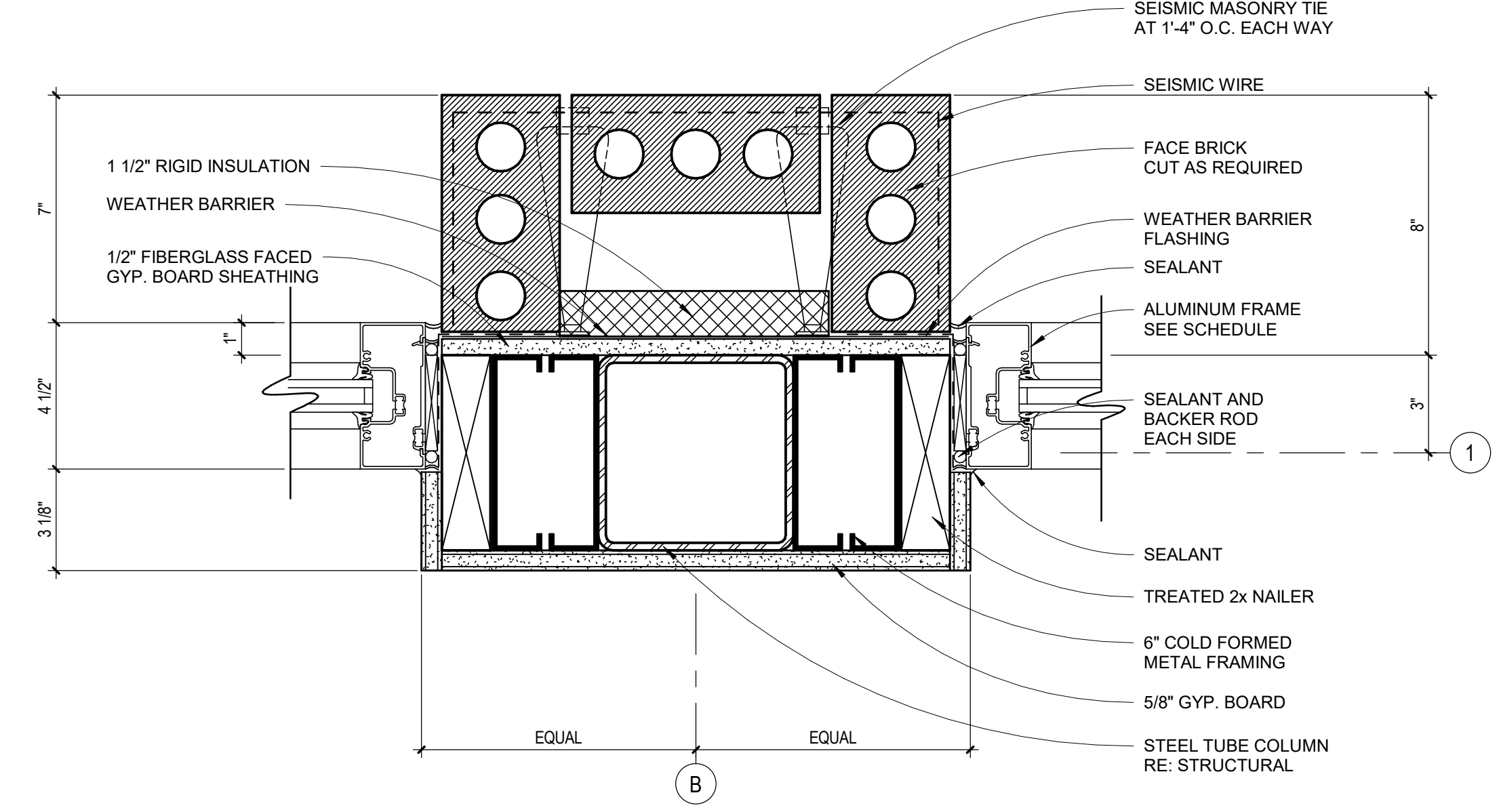


BRACKETT
KRENNERICH
 architects

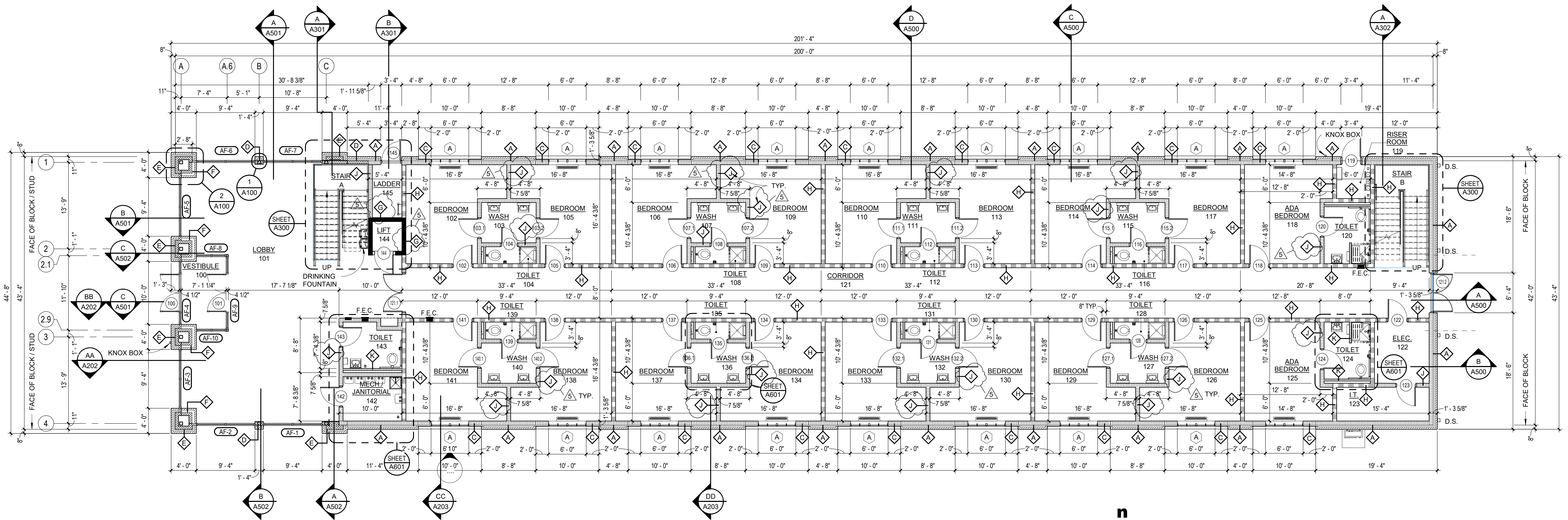
www.bkrarchis.com
 870-932-0975
 870-932-0571
 100 East Huntington Ave. Suite D P.O. Box 1655



2 plan detail
 SCALE: 1 1/2" = 1'-0"



1 plan detail
 SCALE: 3" = 1'-0"



n
first floor plan
 SCALE: 1/8" = 1'-0"

| Revision Schedule | | Issued | Rev. Date | By |
|-------------------|------------------|--------|------------|--------|
| Tag | Rev. Description | 5 | Revision 5 | Date 5 |



Commission Number
 2405

A100

Date: August 23, 2024

D:\Chris\Documents\Revit Projects\2024\2405 BRTC PB CD 08-07-2024
 9/20/2024 8:57:23 AM



LAW ENFORCEMENT TRAINING ACADEMY BARRACKS
BLACK RIVER
TECHNICAL COLLEGE
 Pocahontas, Arkansas



BRACKETT
KRENNERICH
 architects

| Revision Schedule | | Issued |
|-------------------|------------------|-----------|
| Tag | Rev. Description | Rev. Date |
| 1 | | 07 OCT 09 |
| 5 | | Date 5 |

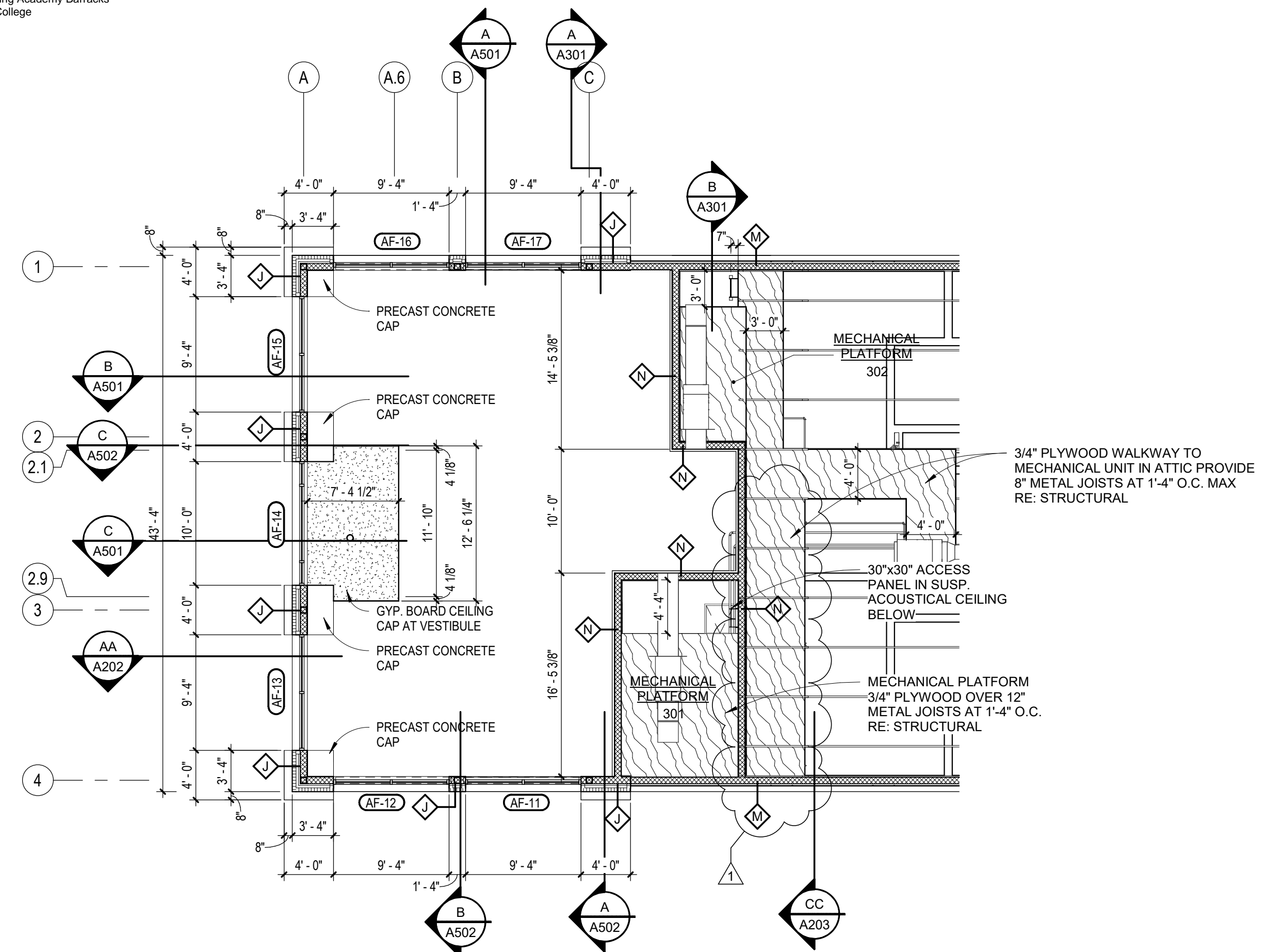


Commission Number
 2405

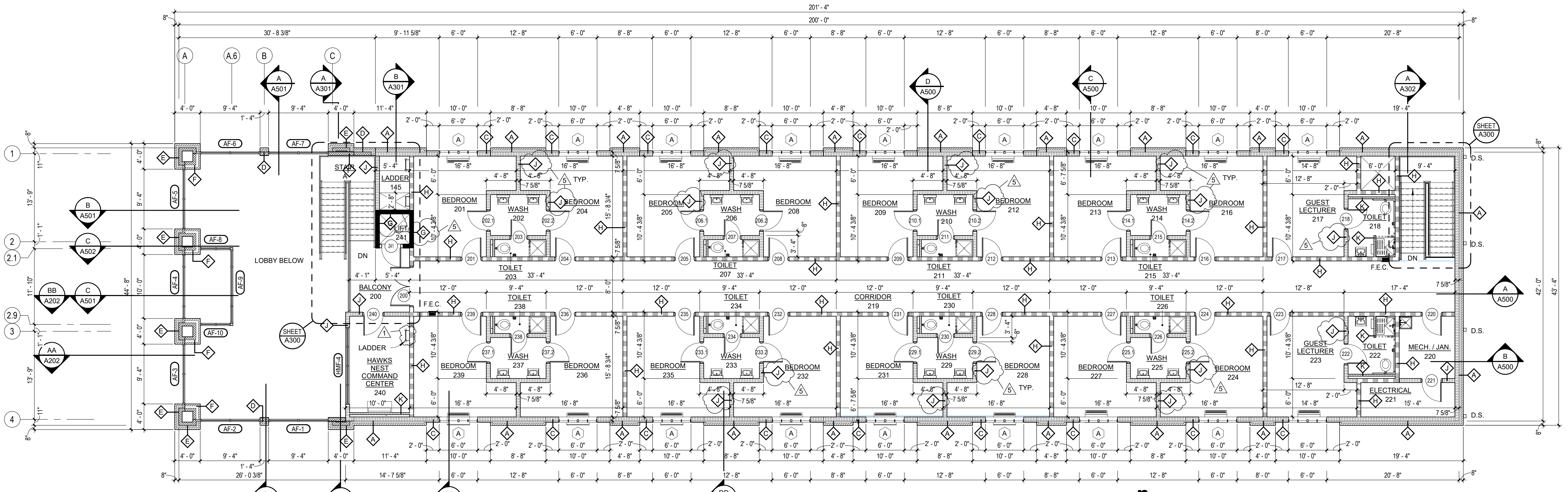
A101

Date: August 23, 2024

100 East Huntington Ave. Suite D P.O. Box 1655
 870-932-0975
 Fax 870-932-0975
 www.bkrarchis.com



n
clerestory plan
 SCALE: 1/8" = 1'-0"



n
second floor plan
 SCALE: 1/8" = 1'-0"

D:\Chris\Documents\Revit\2024\2405 BTRCPB CD 08-07-2024
 9/20/2024 8:57:24 AM



LAW ENFORCEMENT TRAINING ACADEMY BARRACKS
BLACK RIVER
TECHNICAL COLLEGE
 Pocahontas, Arkansas

BRACKETT
KRENNERICH
 architects

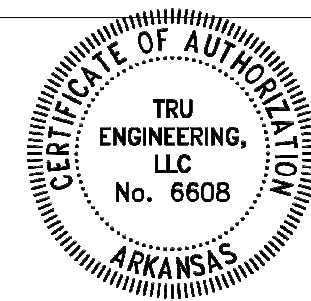
| Revision Schedule | | Issued by |
|-------------------|------------------|-----------|
| Tag | Rev. Description | Rev. Date |
| 1 | Addendum #5 | 9/20/24 |



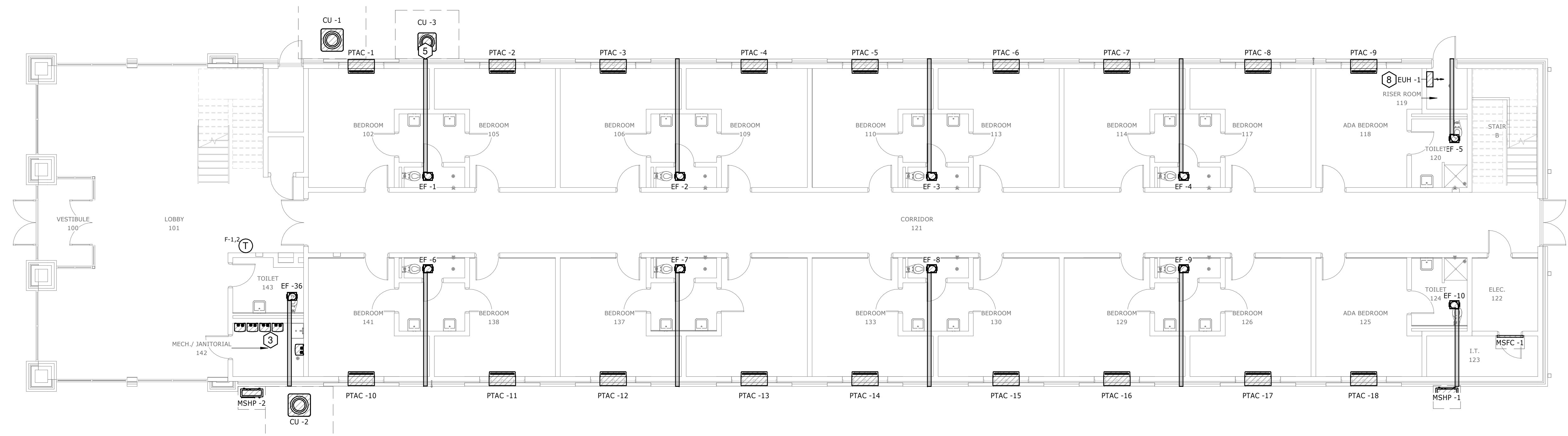
Commission Number
 BKA-003

M101

AUGUST 30, 2024



TRU
 ENGINEERING
 ALEX TRULOVE, PE
 MEP CONSULTING
 alex@truengineering.net
 501-993-7149
 708 N Charles St
 Searcy, AR 72143



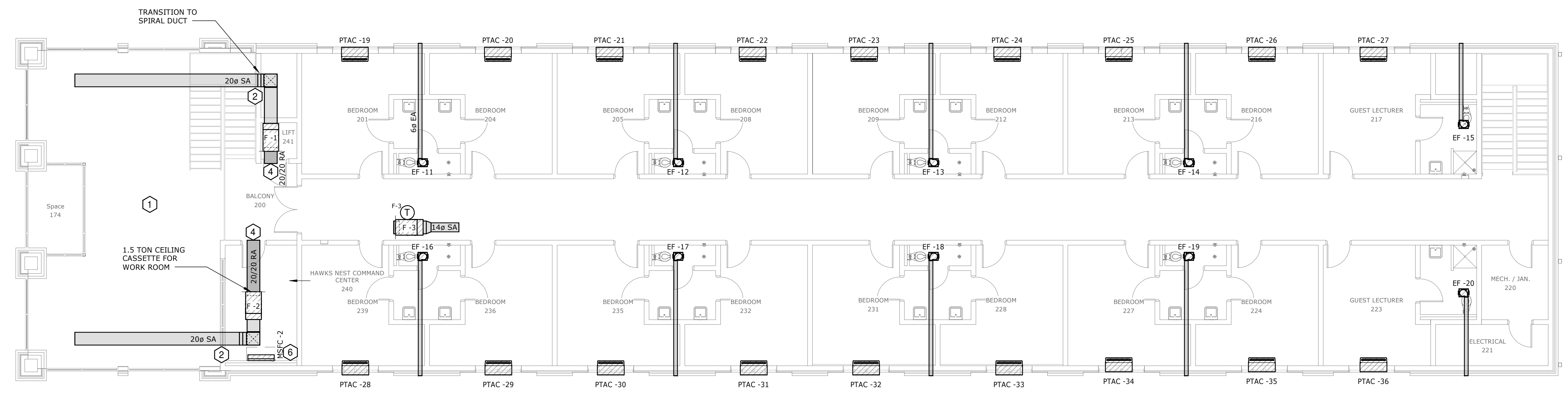
1 HVAC PLAN - FIRST FLOOR
 1/8" = 1'-0"

GENERAL NOTES

- THERE ARE NO CEILINGS IN PROJECT. UNLESS OTHERWISE NOTED, SUSPEND ALL EQUIPMENT AND DUCTWORK AS HIGH AS POSSIBLE AGAINST STRUCTURE. ALL DUCTWORK/PIPING/CONDUIT ROUTED ALONG WALLS SHALL BE SUPPORTED WITH U-CLIPS. ALL EXPOSED PIPING/DUCTWORK/CONDUIT SHALL BE PAINTED PER ARCHITECT.
- COORDINATE WITH ARCHITECT FOR FINAL STYLE/COLOR SELECTION OF LOUVERED FACE OF PTAC.
- PROVIDE HARD-WIRED, WALL-MOUNTED THERMOSTAT FOR ALL HVAC EQUIPMENT.
- ROUTE ALL EQUIPMENT CONDENSATE TO NEAREST LANDSCAPED AREA.

KEYED NOTES

- PROVIDE DESTRATIFICATION FAN EQUAL TO AIRUS DESIGNER SERIES 120/1 OPTION. COORDINATE WITH ARCHITECT FOR FINAL STYLE AND COLOR SELECTION. COORDINATE FINAL ELECTRICAL REQUIREMENTS WITH ELECTRICAL ENGINEER/CONTRACTOR BEFORE INSTALLATION. TRANSITION FROM HARD TO FABRIC DUCT WHERE DUCT BECOMES EXPOSED. FABRIC DUCT SHALL BE EQUAL TO PRIHODA. CONTRACTOR SHALL SUBMIT FINAL LIGHTING LAYOUT TO FABRIC DUCT MANUFACTURER FOR SELECTION BEFORE SUBMITTAL TO ENGINEER. FABRIC DUCT SHALL BE BLACK.
- PROVIDE WATER HEATER MANUFACTURER'S REQUIRED FLUE TO EXTERIOR WALL. PROVIDE RETURN GRILLE EQUAL TO TITUS 50F, 24/24.
- TERMINATE EXHAUST DUCT WITH WALL CAP, TYPICAL ALL. PAINT PER ARCHITECT.
- ROUTE MSFC-2 CONDENSATE AND REFRIGERANT THROUGH CHASE WALL TO FIRST FLOOR JANITOR CLOSET. ROUTE EXPOSED THROUGH JANITOR CLOSET AND PENETRATION TO EXTERIOR 6" ABOVE GRADE. DISCHARGE CONDENSATE TO CONDENSATE PIT. REFER TO PLUMBING DETAILS FOR CONDENSATE PIT REQUIREMENT.
- ROUTE MSFC-1 CONDENSATE DOWN INSULATED SIDE OF EXTERIOR WALL AND PENETRATE 6" ABOVE GRADE TO DISCHARGE TO CONDENSATE PIT.
- PROVIDE 208/1 1.8KW ELECTRIC HEATER EQUAL TO MARK MODEL SSAR.
- TERMINATE F-3 RETURN AIR WITH FILTER BANK EQUAL TO EZ ACCESS, 1" FILTER BANK.



2 HVAC PLAN - SECOND FLOOR
 1/8" = 1'-0"



LAW ENFORCEMENT TRAINING ACADEMY BARRACKS
BLACK RIVER
TECHNICAL COLLEGE
 Pocahontas, Arkansas

BRACKETT
KRENNERICH
 architects

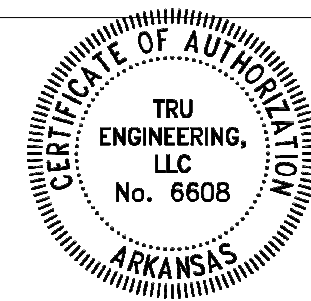
| Tag | Rev. Description | Rev. Date | Issued by |
|-----|------------------|-----------|-----------|
| 1 | 1 | 9/20/24 | |



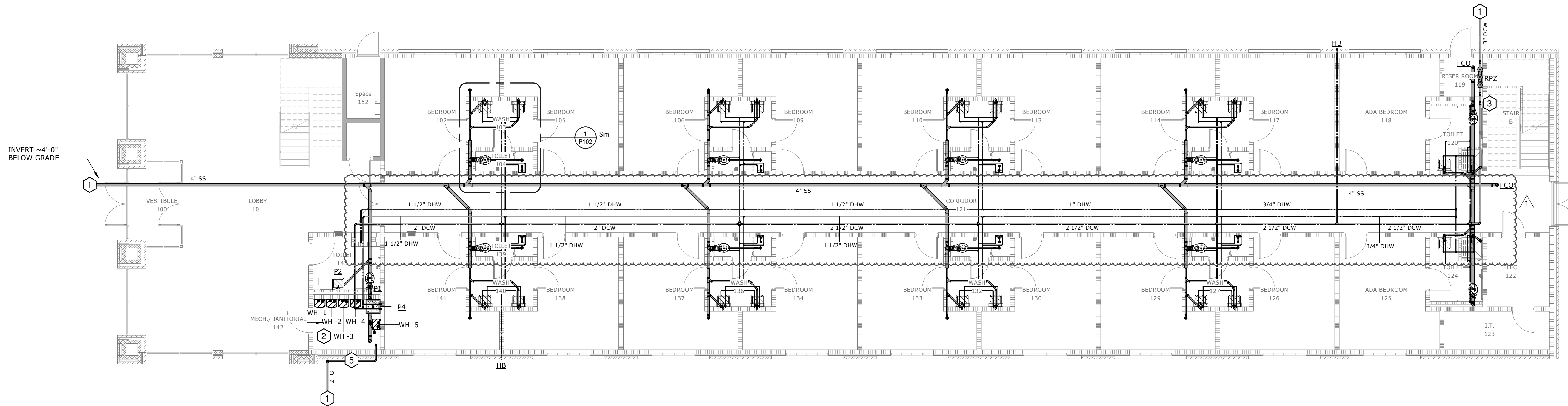
Commission Number
 BKA-003

P101

AUGUST 30, 2024



TRU
 ENGINEERING
 ALEX TRULOVE, PE
 MEP CONSULTING
 alex@truengineering.net
 501-993-7149
 708 N Charles St
 Searcy, AR 72143



1 PLUMBING PLAN - FIRST FLOOR
 1/8" = 1'-0"

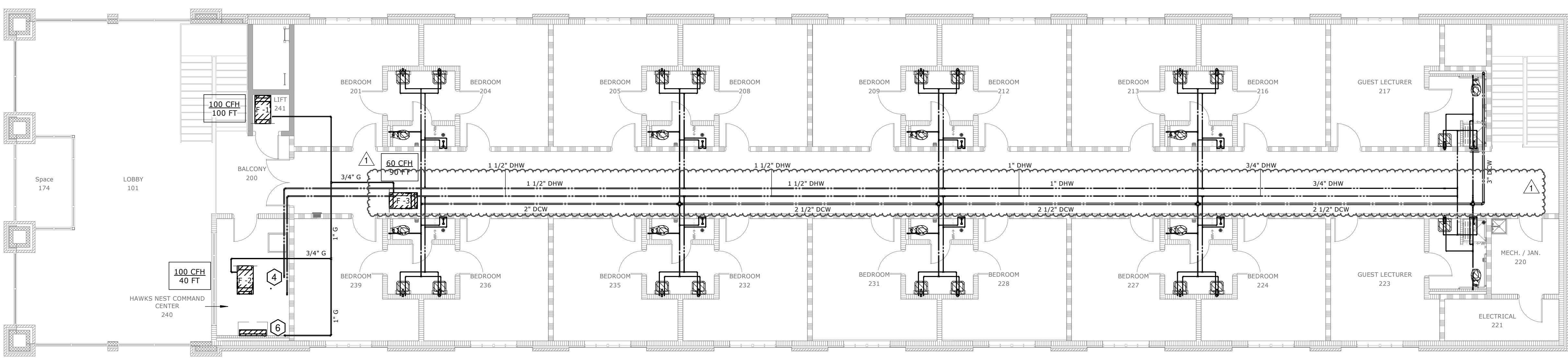
GENERAL NOTES

- REFER TO ENLARGED TYPICAL ROOM PLAN AND SANITARY VENT RISER FOR ADDITIONAL PIPE SIZING. THERE ARE NO CEILING IN PROJECT. UNLESS OTHERWISE NOTED, SUSPEND ALL PIPING AS HIGH AS POSSIBLE AGAINST STRUCTURE. ALL PIPING ROUTED ALONG WALLS SHALL BE SUPPORTED WITH U-CLIPS. ALL EXPOSED PIPING SHALL BE PAINTED PER ARCHITECT.
- PROVIDE WATER HAMMER ARRESTOR BEFORE LAST FIXTURE IN EACH DCW MAIN AND BRANCH MAIN.
- ALL GAS PIPING IS SIZED BASED UPON LONGEST LENGTH METHOD. NOTE: ENGINEER IF DISTANCES SHOWN DIFFER BY MORE THAN 10% IN FIELD.
- PROVIDE WALL CLEANOUT AT BASE OF EACH SANITARY STACK IN EACH BEDROOM RESTROOM GROUP.

KEYED NOTES

- COORDINATE WITH CIVIL FOR CONTINUATION.
- PROVIDE (1) 120/1 RECIRCULATION PUMPS FOR 1ST/2ND FLOOR. COORDINATE WITH ELECTRICAL TO PROVIDE DEDICATED CIRCUIT FOR EACH. REFER PLUMBING DETAILS FOR FULL PIPING/ACCESSORY REQUIREMENTS.
- DOMESTIC WATER UP TO 2ND FLOOR.
- DOMESTIC HOT WATER UP FROM 1ST FLOOR.
- COORDINATE FINAL LOCATION WITH ARCHITECT.
- PROVIDE BUILDING LB TO OZ. REGULATOR SIZED FOR 3,000 CFH. PROVIDE ADDITIONAL 2" CAPPED STUB-OUT WITH ISOLATION GAS COCK FOR FUTURE GENERATOR. NATURAL GAS UP FROM 1ST FLOOR TO ABOVE 2ND FLOOR SPACE.

| PLUMBING -- FIXTURE CONNECTION Ø | | | | |
|----------------------------------|---|--------------------|------|----------|
| TAG | DESCRIPTION | BRANCH CONNECTIONS | | |
| | | DCW | DHW | SS |
| FCO | FLOOR CLEANOUT | | | <varies> |
| FD1 | FLOOR DRAIN - 5" STRAINER | | | 2" |
| FD2 | FLOOR DRAIN - 5" STRAINER | | | 2" |
| HB | Ecobrol Ceramic Disc Wall Hydrant, Exposed, Non-Freeze, Anti-Siphon, Automatic Draining | 3/4" | | |
| P1 | WATER CLOSET - ADA HEIGHT | 1" | | 4" |
| P2 | WALL MOUNT LAVATORY | 1/2" | 1/2" | 2" |
| P3 | SHOWER - BUILT UP | 1/2" | 1/2" | 2" |
| P4 | MOP SINK | 1/2" | 1/2" | 3" |



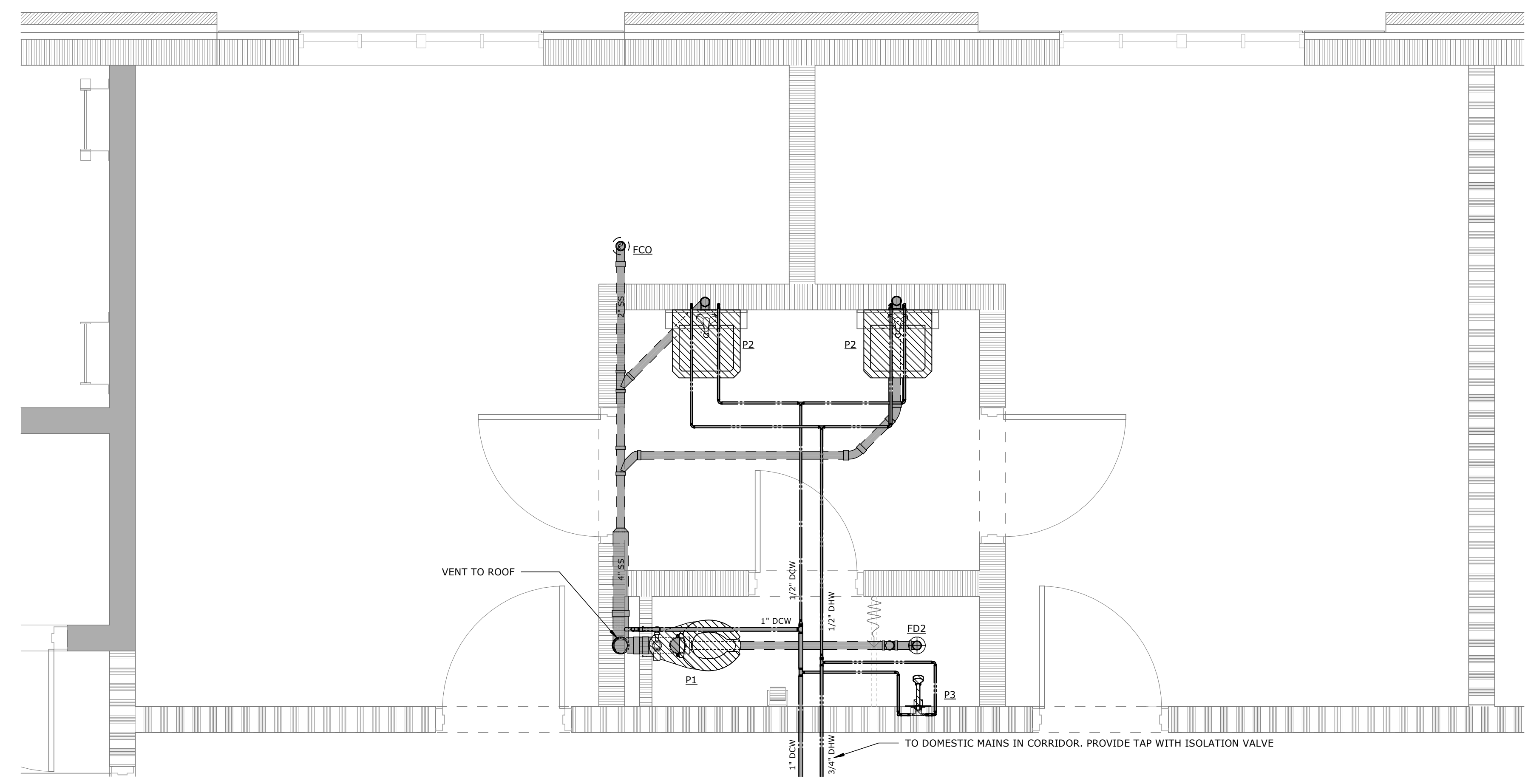
2 PLUMBING PLAN - SECOND FLOOR
 1/8" = 1'-0"



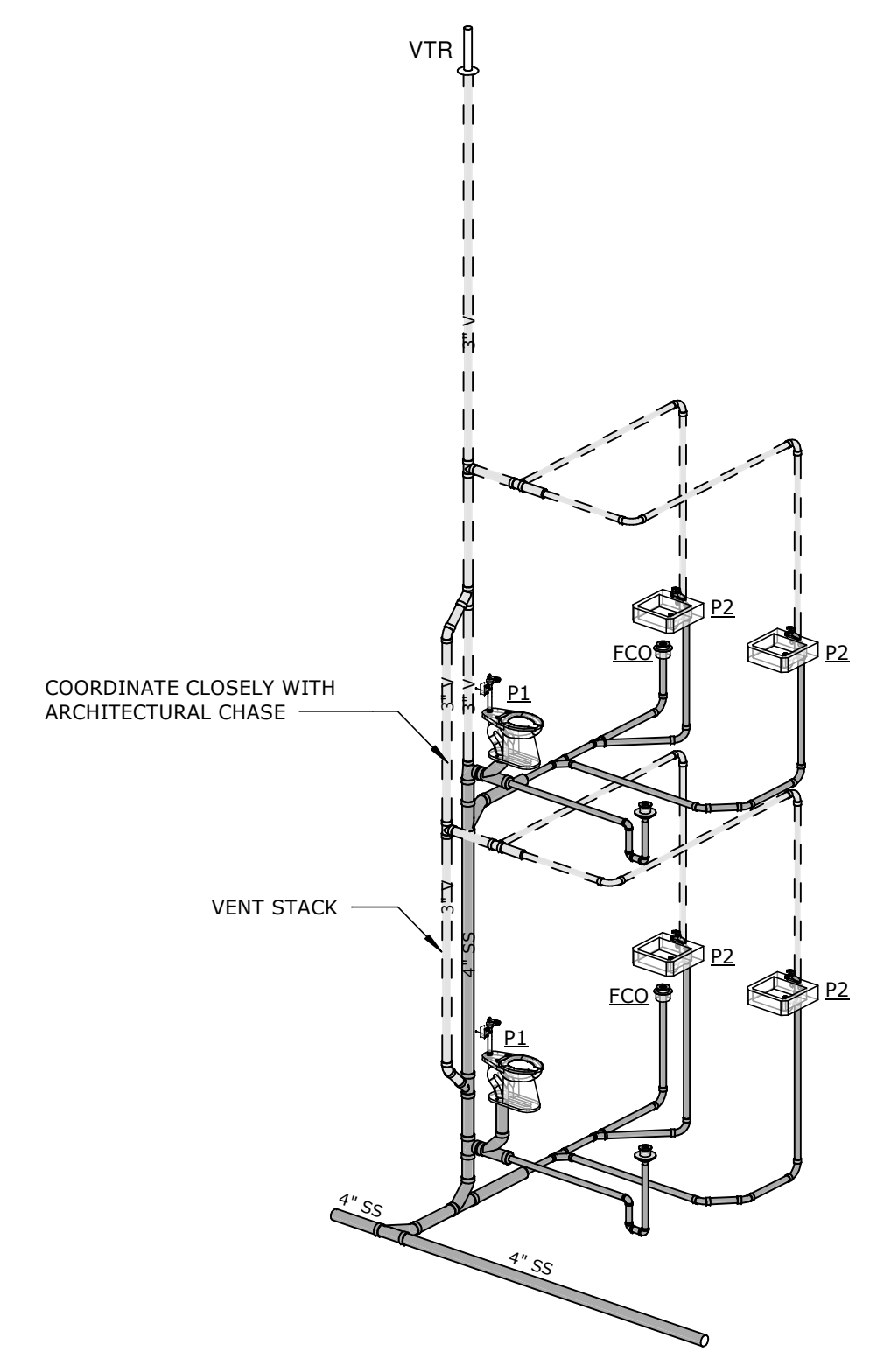
LAW ENFORCEMENT TRAINING ACADEMY BARRACKS
BLACK RIVER
TECHNICAL COLLEGE
 Pocahontas, Arkansas



| PLUMBING -- FIXTURE CONNECTION Ø | | | | |
|----------------------------------|---|--------------------|------|----------|
| TAG | DESCRIPTION | BRANCH CONNECTIONS | | |
| | | DCW | DHW | SS |
| FCO | FLOOR CLEANOUT | | | <varies> |
| FD1 | FLOOR DRAIN - 5" STRAINER | | | 2" |
| FD2 | FLOOR DRAIN - 5" STRAINER | | | 2" |
| HB | Ecolotrol Ceramic Disc Wall Hydrant, Exposed, Non-Freeze, Anti-Siphon, Automatic Draining | 3/4" | | |
| P1 | WATER CLOSET - ADA HEIGHT | 1" | | 4" |
| P2 | WALL MOUNT LAVATORY | 1/2" | 1/2" | 2" |
| P3 | SHOWER - BUILT UP | 1/2" | 1/2" | 2" |
| P4 | MOP SINK | 1/2" | 1/2" | 3" |

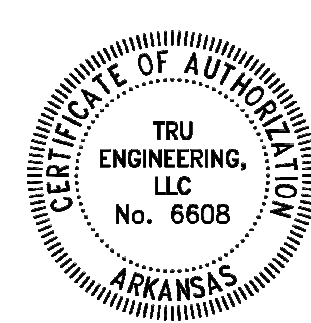


1 ENLARGED PLUMBING PLAN - TYPICAL ROOM
 1/2" = 1'-0"



2 SANITARY RISER - TYPICAL ROOM

| Revision Schedule | | |
|-------------------|------------------|-----------|
| Tag | Rev. Description | Issued by |
| 1 | 1 | 9/20/24 |



TRU
 ENGINEERING, LLC
 No. 6608
 alex@truengineering.net
 501-993-7149
 708 N Charles St
 Searcy, AR 72143

Commission Number
 BKA-003

P102

AUGUST 30, 2024



LAW ENFORCEMENT TRAINING ACADEMY BARRACKS
BLACK RIVER
TECHNICAL COLLEGE
 Pocahontas, Arkansas

BRACKETT
KRENNERICH
 architects

| Tag | Rev. Description | Rev. Date | Issued By |
|-----|------------------|------------|-----------|
| 1 | ADDENDUM #4 | 09/20/2024 | |
| | | | |
| | | | |
| | | | |
| | | | |
| | | | |
| | | | |
| | | | |
| | | | |
| | | | |



Commission Number
 2405
E102
 Date: August 30, 2024

LIGHT FIXTURE SCHEDULE

| TYPE | MANUFACTURER | CATALOG NO. | VOLTS | LED's | REMARKS |
|------|------------------|--|----------|--|--|
| A4 | DAY-BRITE | #FSWEZ440L830-UNV/FSTH | 120-277V | 3000K 4,000 LUMEN LED PACKAGE | 4' LINEAR LED WRAPAROUND |
| B | DAY-BRITE | #FSWEZ455L835-UNV/FSTH | 120-277V | 3500K 5,500 LUMEN LED PACKAGE | 4' LINEAR LED WRAPAROUND |
| B4 | DAY-BRITE | #FSWEZ440L835-UNV/FSTH | 120-277V | 3500K 4,000 LUMEN LED PACKAGE | 4' LINEAR LED WRAPAROUND |
| B4E | DAY-BRITE | #FSWEZ440L835-UNV/FSTH-EMLED | 120-277V | 3500K 4,000 LUMEN LED PACKAGE | 4' LINEAR LED WRAPAROUND WITH INTEGRAL EMERGENCY BATTERY PACK |
| D2 | ASL | #VBEB24 | 120-277V | 3500K 1,500 LUMEN LED PACKAGE | WALL MOUNTED LED DECORATIVE VANITY FIXTURE |
| EM | CHLORIDE | #VLLU2 | 120-277V | LED INTEGRAL TO FIXTURE | 2-HEAD SELF-CONTAINED EMERGENCY LIGHT FIXTURE, WALL OR CEILING MOUNTED AS INDICATED |
| EMX | CHLORIDE | #VLCR3R | 120-277V | LED INTEGRAL TO FIXTURE | WALL OR CEILING MOUNT, COMBINATION SINGLE OR DOUBLE FACE EXIT SIGN (AS SHOWN ON LIGHTING PLAN) / EMERGENCY FIXTURE WITH EMERGENCY BATTERY BACK-UP - DIRECTIONAL ARROWS IF/AS INDICATED ON LIGHTING PLAN - POWERING EXTERIOR REMOTE HEADS WHERE INDICATED |
| EMR1 | CHLORIDE | #VLL1RGO | 3.6V | LED INTEGRAL TO FIXTURE | SINGLE EXTERIOR REMOTE HEAD EMERGENCY FIXTURE POWERED FROM INTERIOR EXIT LIGHT |
| EMR2 | CHLORIDE | #VLL2RGO | 3.6V | LED INTEGRAL TO FIXTURE | DOUBLE EXTERIOR REMOTE HEAD EMERGENCY FIXTURE POWERED FROM INTERIOR EXIT LIGHT |
| FL | STONCO | #SF100-SCT-S-G2-1-10-(CTBS) | 120-277V | 4000K 14,800 LUMEN LED PACKAGE | GROUND MOUNTED FLAG FLOOD LIGHT |
| G4 | DAY-BRITE | #FSX440L830-UNV-DIM/FSTH | 120-277V | 3000K 4,000 LUMEN LED PACKAGE | 4' LINEAR LED SEALED STRIP FIXTURE |
| H | INSIGHT LIGHTING | #SSL-UD-MO-RGB30-10-RGB30-10-WM-120V-DMXSY-(CTBS)/CDS-RDM AS NEEDED / RDM | 120-277V | 3500K 1,700 LUMEN LED PACKAGE | DECORATIVE UP/DOWN CYLINDER SCONCE, EXTERIOR RATED, 6" DIAMETER, RGBW OUTPUT WITH 10° BEAM SPREAD |
| J | ALW | #CRU6-40903515NN-40903515NN-NV00-1C-(CTBS) | 120-277V | 3500K 4,000 LUMEN UP/DN LED PACKAGE | 6" DIAMETER WALL-MOUNT CYLINDER, 15° BEAM UP AND DOWN |
| K | LUMOS | #LC4-VER-60-SO-835-DIM-ACXX-(CTBS)-(CTBS)-DNL2M | 120-277V | 3500K 2,000 LUMEN LED PACKAGE | SUSPENDED 4" DIAMETER ILLUMINATED TUBE, 5' TALL WITH INTEGRAL 35° BEAM DOWNLIGHT |
| L2 | FINELITE | #HP-2-WM-ID-2-B-V-835-ASY-X-DA0-X-96LG-120V-SC-FC-10%-MB-FE-(CTBS) | 120-277V | 3500K 400 LUMEN DOWN 1000 LUMEN UP LED PACKAGE | 2' WALL MOUNT LINEAR WITH ASYMMETRIC OUTPUT UP AND DOWN, 400LM/FT DOWN, 1000LM/FT UP |
| ME | COLUMBIA | #2FGXG42B835-4-F-UNV-DIM-BSL10LST | 120-277V | 3500K 4,200 LUMEN LED PACKAGE | 2' x 4' RECESSED LED VOLUMETRIC GRID TROFFER EQUIPPED WITH EMERGENCY BATTERY BACKUP |
| SL1 | GARDCO / ULS | #OPF-S-A03-830-T4W-AR1-UNV-FAWS-(CTBS)-OPF-S-HIS-1 RSP-20-4-11-AB-D1-FINISH (POLE) | 120-277V | 3000K 9,991 LUMEN LED PACKAGE | TYPE T4W SITE LIGHT WITH INTERNAL HOUSE SIDE SHIELD ON 20' ROUND STEEL POLE |
| T3 | KELVIK | #RX-30K-350-HWXX-120V-3/RX-UP-1L-(LENGTH)-FL | 120-277V | 3500K 250 LUMEN/FT LED PACKAGE | EXTERIOR RATED LINE VOLTAGE LINEAR STRIP LIGHT WITH ALUMINUM CHANNEL AND LENS, 3' RUN, 250LM/FT, 3500K |
| WP | GARDCO | #GCM-A02-830-T3M-120V-FAWS-(CTBS) | 120-277V | 3000K 2,500 LUMEN LED PACKAGE | EXTERIOR CYLINDRICAL WALL PACK, TYPE 3M DISTRIBUTION |
| WPE | GARDCO | #GCM-A02-830-T3M-120V-FAWS-EC-(CTBS) | 120-277V | 3000K 2,500 LUMEN LED PACKAGE | EXTERIOR CYLINDRICAL WALL PACK, TYPE 3M DISTRIBUTION WITH INTEGRAL EMERGENCY BATTERY PACK |

NOTE:
 1. CTBS = COLOR TO BE SELECTED BY OWNER OR ARCHITECT.

GENERAL NOTES

- ALL WORK SHALL COMPLY WITH THE 2023 EDITION OF THE NATIONAL ELECTRIC CODE (N.E.C.).
- THE SPECIFICATIONS ARE AS BINDING ON THE CONTRACTOR AS THE DRAWINGS. THE CONTRACTOR SHALL READ THE SPECIFICATIONS AND SHALL INCLUDE ALL ITEMS REQUIRED BY THE SPECIFICATIONS BEFORE SUBMITTING A BID.
- MINIMUM WIRE SIZE SHALL BE #12 AWG UNLESS OTHERWISE NOTED. ALL CONDUCTORS #10 AND SMALLER SHALL BE SOLID COPPER, EXCEPT WHERE FLEXIBILITY IS REQUIRED, AND ALL CONDUCTORS #8 AND LARGER SHALL BE TRANDED COPPER USING BOLTED LUGS AT TERMINALS UNLESS OTHERWISE NOTED.
- MINIMUM CONDUIT SIZE SHALL BE 3/4" UNLESS OTHERWISE NOTED. ALL CONDUIT SHALL BE CONCEALED UNLESS OTHERWISE NOTED. ALL CONDUIT IN OR BELOW FLOOR SLABS AND BELOW GRADE SHALL BE 1" MINIMUM UNLESS OTHERWISE NOTED.
- EACH CIRCUIT SHALL HAVE AN EQUIPMENT GROUNDING CONDUCTOR, AND MULTI-WIRE CIRCUITS OF DIFFERENT PHASES MAY SHARE THE EQUIPMENT GROUND. EQUIPMENT GROUND CONDUCTOR SIZE SHALL NOT BE LESS THAN #12 AWG OR AS INDICATED ON THE DRAWINGS.
- PULL DEDICATED NEUTRALS FOR ALL FOR CIRCUITS SERVED BY A GFCI TYPE CIRCUIT BREAKER. CONDUCTORS OF GFCI CIRCUITS (FED FROM A GFCI CIRCUIT BREAKER) SHALL BE TYPE XHHW (COMPATIBLE WITH GFCI DEVICE).
- ALL ELECTRICAL EQUIPMENT (CONDUIT, BOXES, SUPPORTS, ETC.) INSTALLED IN EXPOSED CEILING AREAS SHALL BE PAINTED AS DIRECTED BY THE ARCHITECT.
- VERIFY EXACT LOCATION OF ALL MECHANICAL EQUIPMENT, INCLUDING THERMOSTATS, WITH MECHANICAL CONTRACTOR.
- THE ELECTRICAL CONTRACTOR SHALL CLOSELY COORDINATE WITH MECHANICAL & PLUMBING CONTRACTORS FOR EXACT LOCATION OF HVAC & PLUMBING EQUIPMENT.
- THE ELECTRICAL CONTRACTOR SHALL BE RESPONSIBLE FOR PROPER SIZING OF ALL MOTOR OVERLOAD DEVICES (HEATERS) IN STARTERS BASED ON ACTUAL NAMEPLATE RATINGS ON THE MOTORS BEING INSTALLED PER N.E.C. 430.6(A)(2).
- ALL LOW VOLTAGE INTERLOCKING OF HVAC EQUIPMENT SHALL BE BY THE CONTROLS CONTRACTOR. ALL "LINE VOLTAGE" CONTROLS SHALL BE BY THE ELECTRICAL CONTRACTOR AND SHALL BE IN CONDUIT.
- PROVIDE ENGRAVED NAMEPLATES ON ALL OF THE FOLLOWING EQUIPMENT:
 PANELBOARDS, DISCONNECT SWITCHES, MANUAL & AUTOMATIC STARTERS, COMBINATION STARTER/DISCONNECTS, TRANSFORMERS
 REFER TO ELECTRICAL IDENTIFICATION REQUIREMENTS IN THE ELECTRICAL SPECIFICATIONS.

LIGHTNING PROTECTION SYSTEM

A COMPLETE LIGHTNING PROTECTION SYSTEM SHALL BE PRICED AND PROVIDED AS AN ADDITIVE ALTERNATE TO THE PROJECT.
 LIGHTNING PROTECTION SYSTEM SHALL BE AS DESIGNED AND INSTALLED BY A U.L. CERTIFIED LIGHTNING PROTECTION SYSTEM PROFESSIONAL. REFER ALSO TO SPECIFICATION SECTION 26 41 13.



LAW ENFORCEMENT TRAINING ACADEMY BARRACKS
BLACK RIVER
TECHNICAL COLLEGE
 Pocahontas, Arkansas

BRACKETT
KRENNERICH
 architects

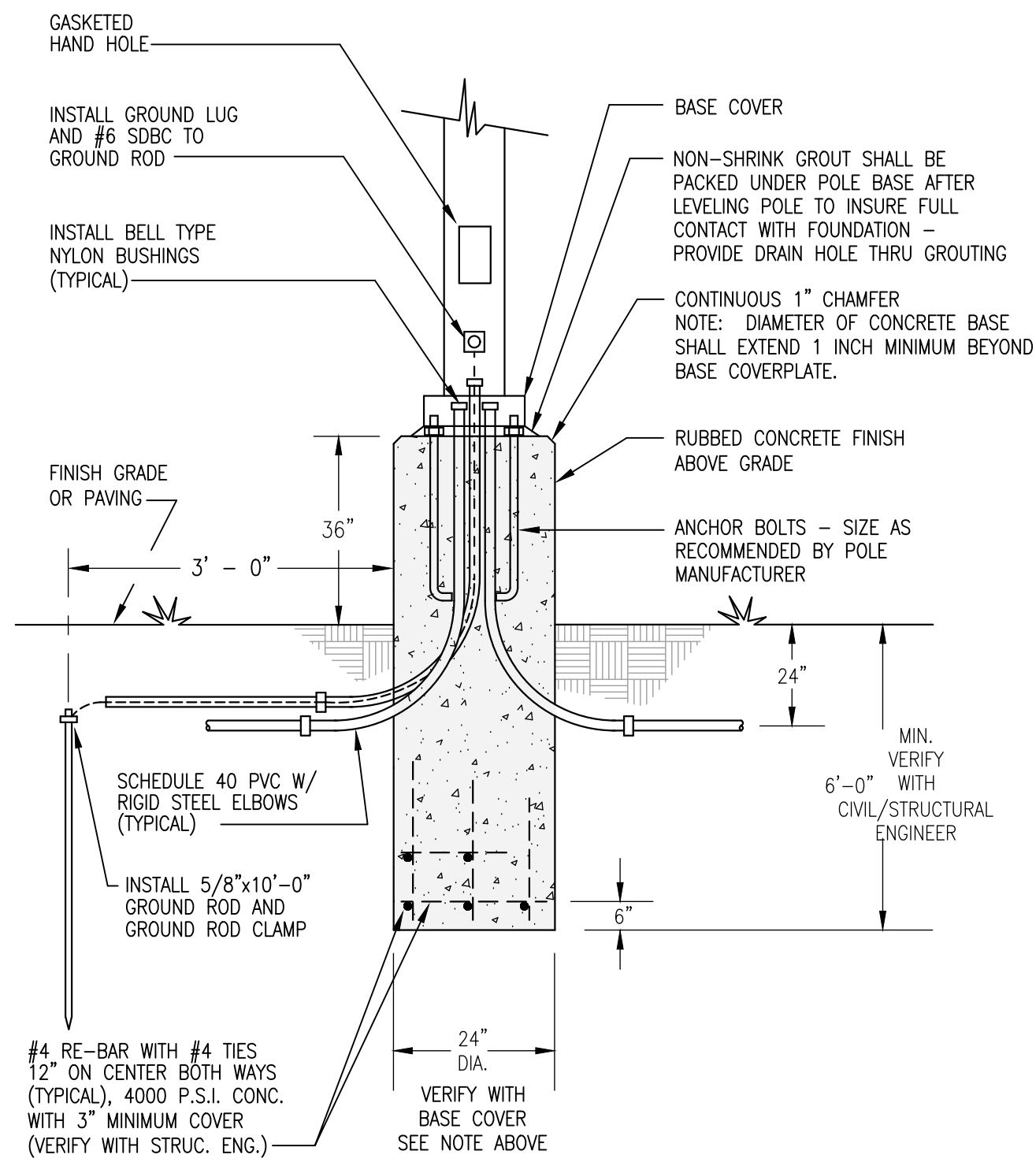
| Revision Schedule | Issued by |
|-------------------|------------|
| Tag | Rev. Date |
| 1 | 09/20/2024 |
| ADDENDUM #4 | |



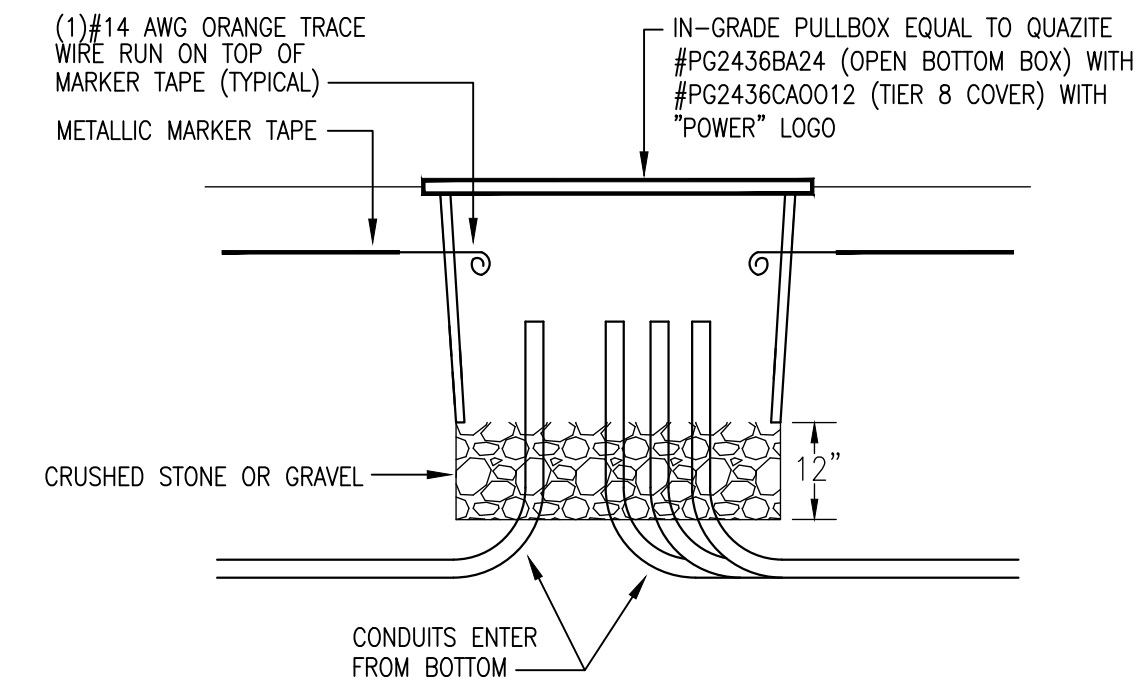
Commission Number
 2405

E103

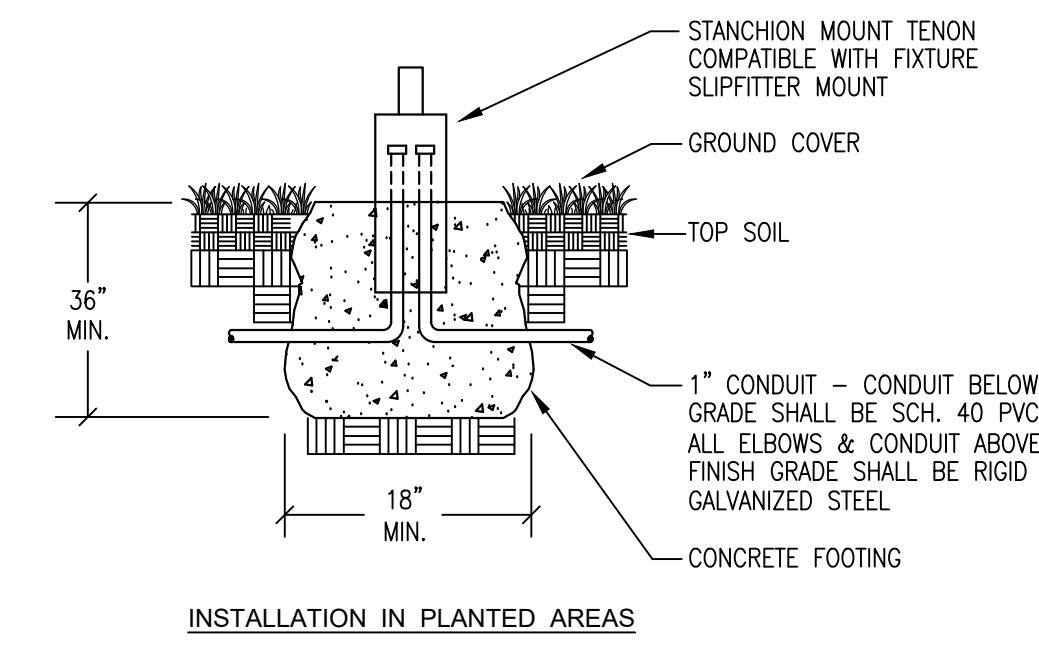
Date: August 30, 2024



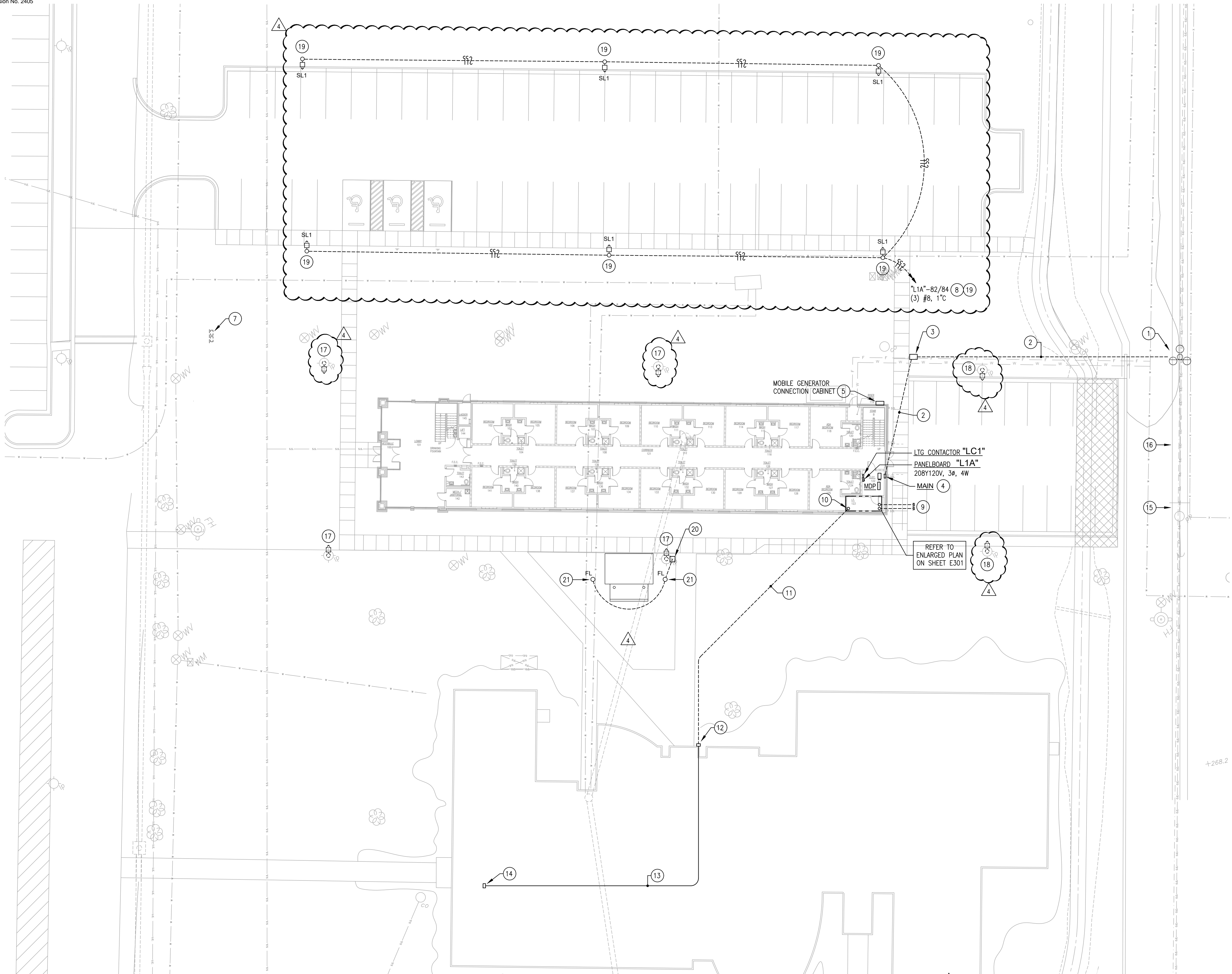
2 LIGHT POLE BASE DETAIL
 SCALE: NONE



3 IN-GRADE PULLBOX DETAIL
 SCALE: NONE



4 GROUND MOUNTED FLOOD BASE DETAIL
 SCALE: NONE



1 SITE PLAN - ELECTRICAL
 SCALE: 1" = 20'-0"

- KEYED NOTES:**
- PROPOSED NEW UTILITY TRANSFORMER POLE AND CT METER LOCATION.
 - NEW UNDERGROUND SECONDARY - TO BE ROUTED AROUND EXISTING HARDSCAPE OF TRAINING AREA AS SHOWN.
 - IN-GRADE PULLBOX - REFER TO "IN-GRADE PULLBOX DETAIL" ON THIS SHEET.
 - BUILDING EXTERIOR MAIN DISCONNECT - REFER TO "POWER RISER DIAGRAM" ON SHEET E701.
 - REFER TO "POWER RISER DIAGRAM" ON SHEET E701.
 - EXISTING RELOCATED SITE LIGHT POLE AND FIXTURE MOUNTED ON NEW CONCRETE BASE - REFER TO "LIGHT POLE BASE DETAIL" ON THIS SHEET.

- EXISTING PEDESTAL MOUNTED PANELS TO REMAIN.
- CIRCUIT VIA PEC-CONTROLLED LIGHTING CONTACTOR "LC1" - REFER TO "EXTERIOR LIGHTING CONTROL DIAGRAM" ON SHEET E701.
- COMMUNICATIONS CONDUITS STUBBED OUT TO SITE AND CAPPED FOR FUTURE USE - PROVIDE FLUSH END-OF-DUCT MARKER.
- CONDUIT STUB-UP IN NEW IT ROOM - REFER TO ENLARGED PLAN ON SHEET E301.
- (1) 2" CONDUIT FOR FIBER OPTIC CABLE CONNECTION BETWEEN BUILDINGS. CONTRACTOR SHALL FURNISH & INSTALL FIBER OPTIC CABLE PER OWNER'S SPECIFICATIONS AND SHALL TERMINATE TO PATCH PANELS ON BOTH ENDS AND TEST.
- RISE UP AT EXTERIOR WALL OF EXISTING BUILDING, ROUTE TO ELEVATION ABOVE INTERIOR DROP CEILING AND SET A WALL MOUNTED NEMA 3R PULLBOX - COORDINATE WITH OWNER AND FIELD-VERIFY OPTIMUM RISER LOCATION.
- EXTEND CONDUIT FROM EXTERIOR PULLBOX TO EXISTING DATA ROOM, ROUTED ABOVE ACCESSIBLE CEILINGS.
- COORDINATE WITH OWNER ON FINLA LOCATION OF FIBER PATCH PANEL - MAKE REQUIRED CONNECTIONS ON BOTH ENDS AND TEST.
- EXISTING UTILITY RISER POLE.
- EXISTING 3# OVERHEAD UTILITY DISTRIBUTION CIRCUIT.
- EXISTING SITE LIGHTING POLE LOCATION - DISCONNECT & REMOVE LIGHT FIXTURE - TURN OVER TO OWNER. REMOVE BRANCH CIRCUIT CONDUCTORS BACK TO POINT WHERE REQUIRED TO MAINTAIN CIRCUIT CONTINUITY TO EXISTING-TO-REMAIN POLE LOCATIONS. (REFER TO KEYED NOTE 18). UNBOLT POLE FROM CONCRETE PEDESTAL AND TURN OVER TO OWNER. DEMOLISH CONCRETE PEDESTAL AND REMOVE EXISTING CONDUIT BACK TO A POINT UNDERGROUND - REMAINING INACCESSIBLE (UNDERGROUND) CONDUIT MAY BE ABANDONED IN PLACE. POLE & FIXTURE TO BE MOVED TO NEW LOCATION AS SHOWN AND NOTED.
- EXISTING-TO-REMAIN SITE LIGHT FIXTURE AND POLE. ASSURE EXISTING BRANCH CIRCUIT CONTINUITY AND CONTROL IS MAINTAINED TO THIS LOCATION WHEN DEMOVING OTHER SITE LIGHT POLE LOCATIONS THAT MAY BE ON THIS SAME BRANCH CIRCUIT.
- THE MATERIAL AND LABOR COSTS OF THE NEW PARKING LOT SITE LIGHTING AND ASSOCIATED BRANCH CIRCUIT CONDUCTORS & CONDUIT SHALL BE BROKEN OUT AND PROVIDED AS AN ADDITIVE ALTERNATE.
- FURNISH & INSTALL QUAZITE IN-GRADE PULLBOX TO INTERCEPT EXISTING UNDERGROUND SITE LIGHTING BRANCH CIRCUIT AND CONNECT NEW FLAG LIGHT FIXTURES TO EXISTING SITE LIGHTING CIRCUIT. FLOODS WILL BE CONTROLLED WITH EXISTING-TO-REMAIN POLE MOUNTED AREA LIGHTS.
- GROUND MOUNTED FLOOD FIXTURE SET BACK FROM FLAG POLE 9'-0". REFER TO "GROUND MOUNTED FLOOD BASE DETAIL" ON THIS SHEET.