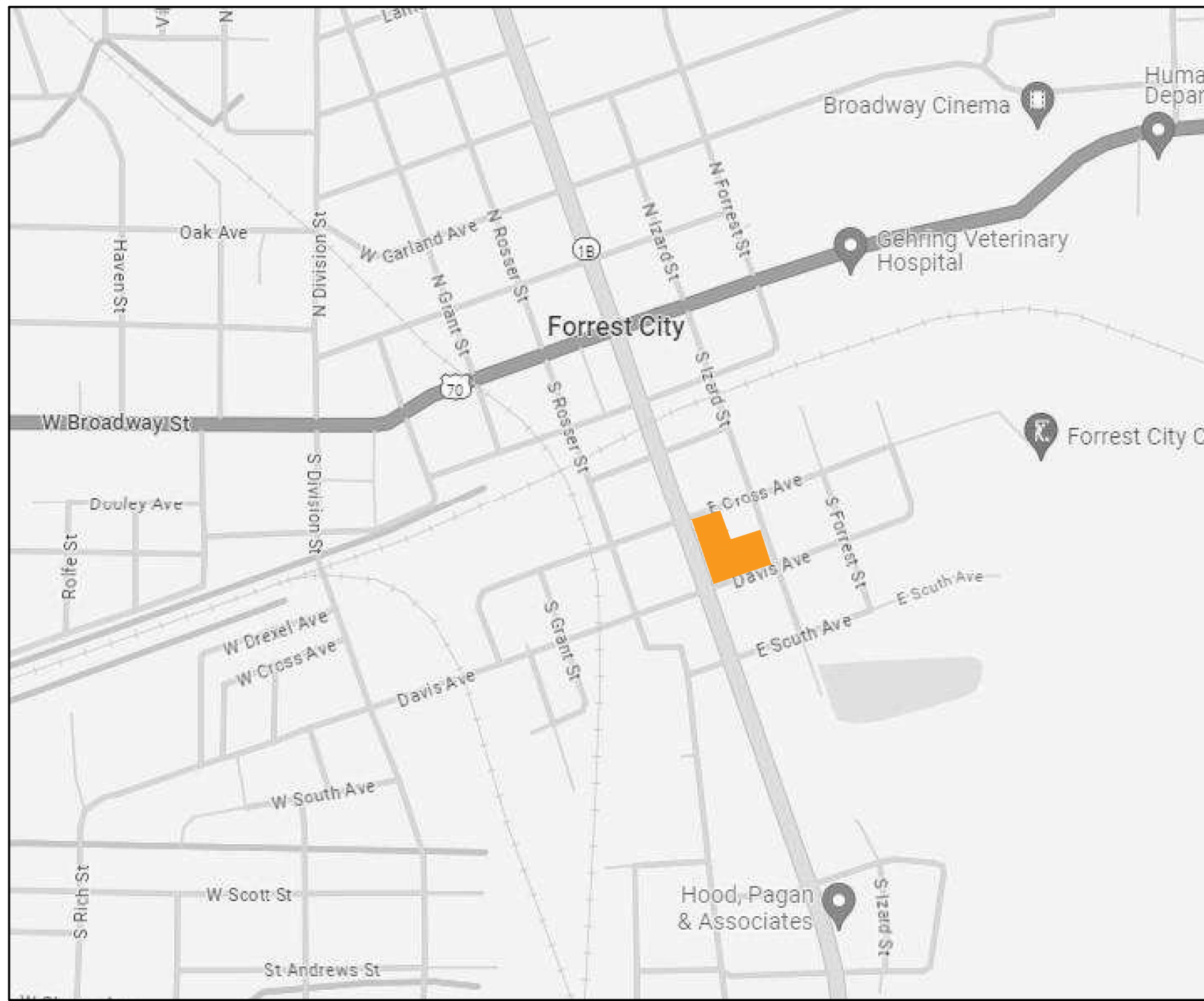
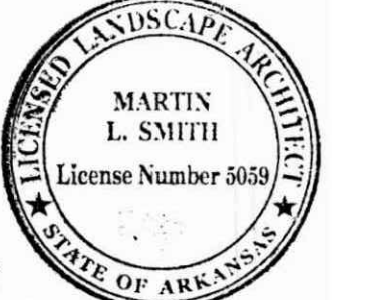


FORREST CITY PUBLIC LIBRARY PARK LANDSCAPE & ADA IMPROVEMENTS

ADDRESS: 421 S WASHINGTON ST., FORREST CITY, AR 72335
 PHASE: 100% CONSTRUCTION DRAWINGS
 DATE: SEPTEMBER 20, 2024



VICINITY MAP
NOT TO SCALE



AERIAL MAP
NOT TO SCALE



CLIENT

FORREST CITY PUBLIC LIBRARY
 ARLISA HARRIS
 421 S WASHINGTON ST.
 FORREST CITY, AR 72335
 AHARRIS@FORRESTCITYLIBRARY.ORG
 870-633-5646

SURVEYOR

RIDGE SURVEYING & CONSULTING PLLC.
 JASON BEARD
 404 CREATH AVE SUITE B
 JONESBORO, AR 72401
 JBEARD@RIDGESURVEYING.NET
 870-203-9940

ELECTRICAL ENGINEER

BROWN ENGINEERS, LLC.
 SCOTT GEURIN, PE
 17200 CHENAL PKWY.
 SUITE 300, PMB 324
 LITTLE ROCK, AR 72223
 SGEURIN@BROWNEENGINEERS.NET
 501-448-0100

LANDSCAPE ARCHITECT

ECOLOGICAL DESIGN GROUP, INC.
 MARTIN SMITH, PLA
 210 EAST MERRIMAN AVENUE
 WYANNE, AR 72396
 MSMITH@ECOLOGICALDG.COM
 870-588-6426

CIVIL ENGINEER

ECOLOGICAL DESIGN GROUP, INC.
 JD BORGESON, PE
 120 SOUTH IZARD ST.
 LITTLE ROCK, AR 72201
 JDBORGESON@ECOLOGICALDG.COM
 903.293.0622

STRUCTURAL ENGINEER

ENGINEERING CONSULTANTS, INC.
 GRANT JORDAN, PE
 401 WEST CAPITOL AVE, SUITE 305
 LITTLE ROCK, AR 72201
 GRANTJORDAN@ECLIR.COM
 501-376-3732

SHEET LIST TABLE	
SHEET NUMBER	SHEET TITLE
CIVIL & LANDSCAPE SHEETS	
C0.00	COVER SHEET
C0.10	DEMOLITION AND EROSION CONTROL
C0.20	EROSION CONTROL NOTES AND DETAILS
C1.00	SITE PLAN
C2.00	GRADING PLAN
C3.00	SITE DETAILS
C3.01	PAVILION DETAILS
C3.02	PAVILION DETAILS
C3.03	PAVILION DETAILS
L1.00	LANDSCAPE PLAN
L1.10	LANDSCAPE NOTES AND DETAILS
ELECTRICAL SHEETS	
E1.0	ELECTRICAL PLAN
E1.1	ELECTRICAL DETAILS

PROJECT NOTES (CITY / PROJECT SPECIFIC NOTES)

1. THE CITY OF FORREST CITY STREET STANDARDS, DRAINAGE CRITERIA MANUAL, SUBDIVISION ORDINANCE, WATER, SEWER, ELECTRIC UTILITY SPECIFICATIONS, AND STATE CODE SHALL GOVERN THESE PLANS. IF THERE ARE DISCREPANCIES IN THE PLANS OR INFORMATION CONTAINED WITHIN, CITY OF FORREST CITY ORDINANCES, STANDARDS, AND SPECIFICATIONS SHALL RULE, UNLESS, APPROVED IN WRITING BY THE CITY ENGINEER.
2. THE ENGINEER OF RECORD MUST CERTIFY THE SITE AND THE PROJECT MUST PASS A DEVELOPMENT FINAL SITE INSPECTION BEFORE REQUESTING A BUILDING FINAL INSPECTION.
3. THE ENGINEER OF RECORD SHALL COORDINATE AND SCHEDULE A PRE-PAVE PRECON WITH THE ENGINEERING DEPARTMENT AND CONTRACTOR BEFORE THE PAVING OF ANY PUBLIC STREET OR PUBLIC ALLEY.

PROPERTY DESCRIPTION

LOT 5, 6, 7, 8, AND A 16 FOOT PLATTED ALLEY, BLOCK 27 OF THE ORIGINAL PLAT OF THE TOWN OF FORREST CITY, ST. FRANCIS COUNTY, ARKANSAS, SUBJECT TO EASEMENTS AS SHOWN ON RECORDED PLAT AND ALL OTHER RIGHTS-OF-WAY AND EASEMENTS OF RECORD.

**FORREST CITY
PUBLIC LIBRARY**
Forrest City, Arkansas

EDG PROJECT NO. 23-084
 DATE 2024.09.20

REVISIONS		
Mark	Date	Description

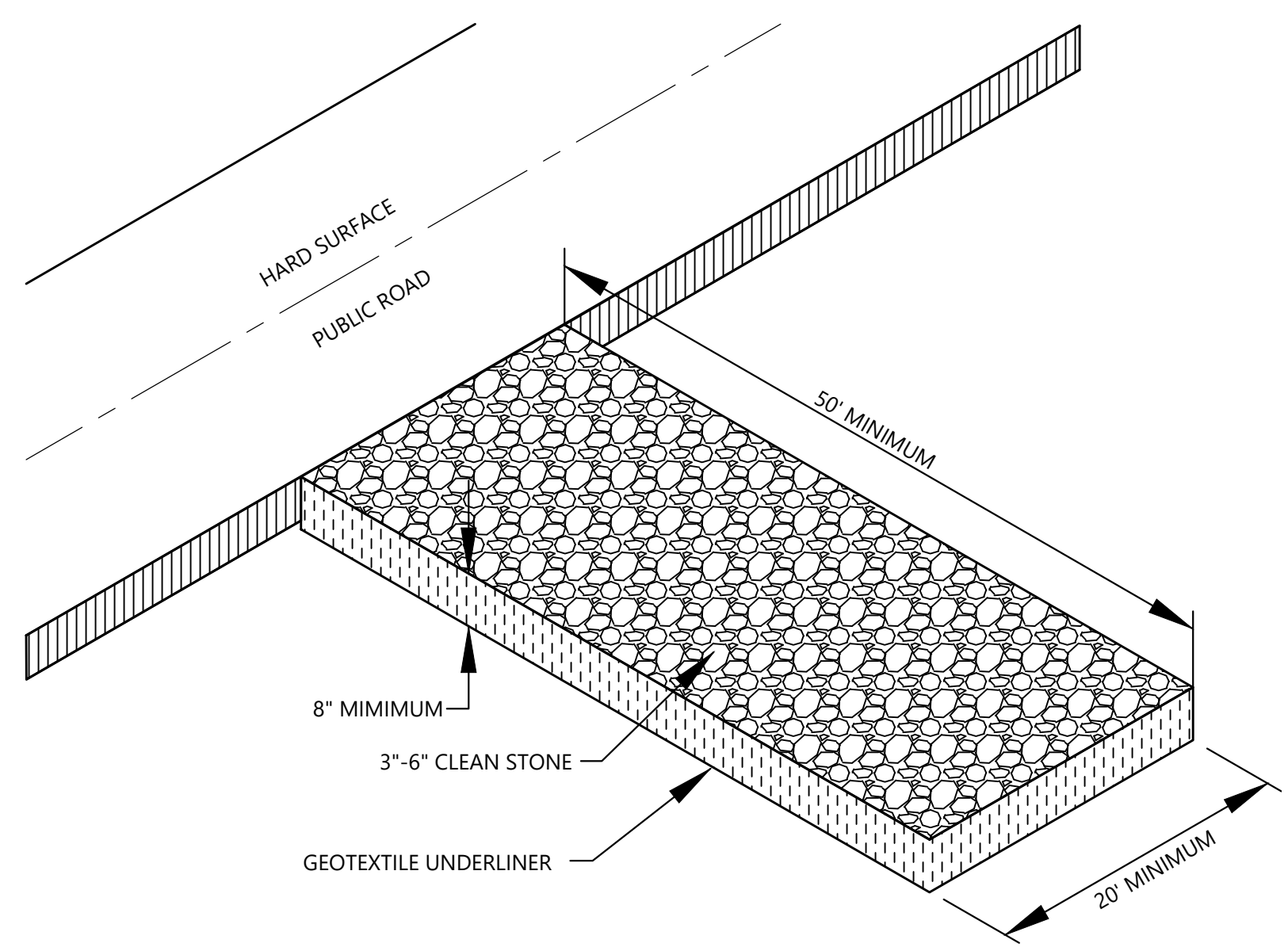
PHASE 100% CONSTRUCTION DOCUMENTS

TITLE COVER SHEET

SHEET NO. C0.00

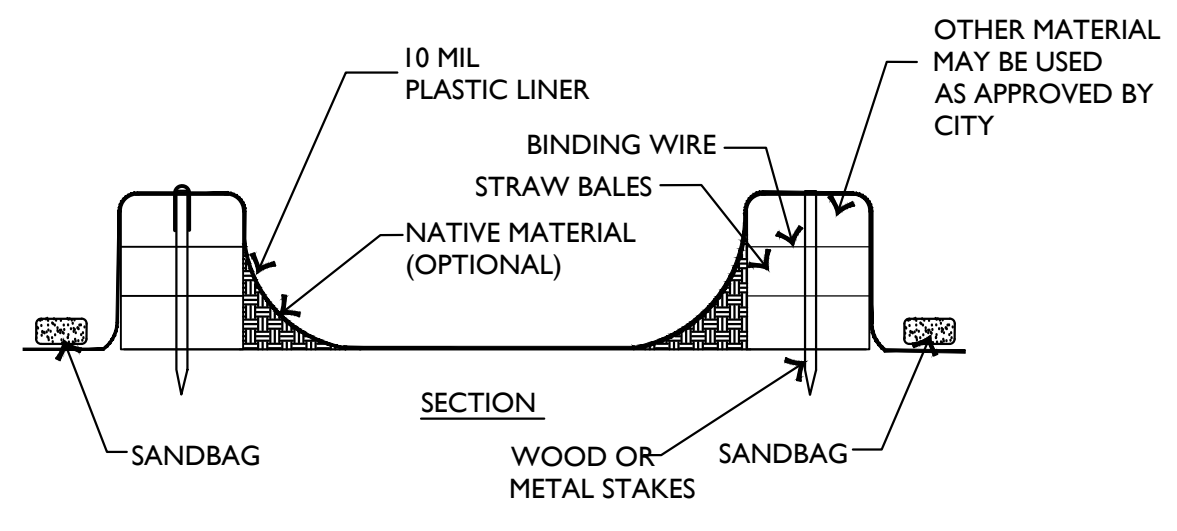
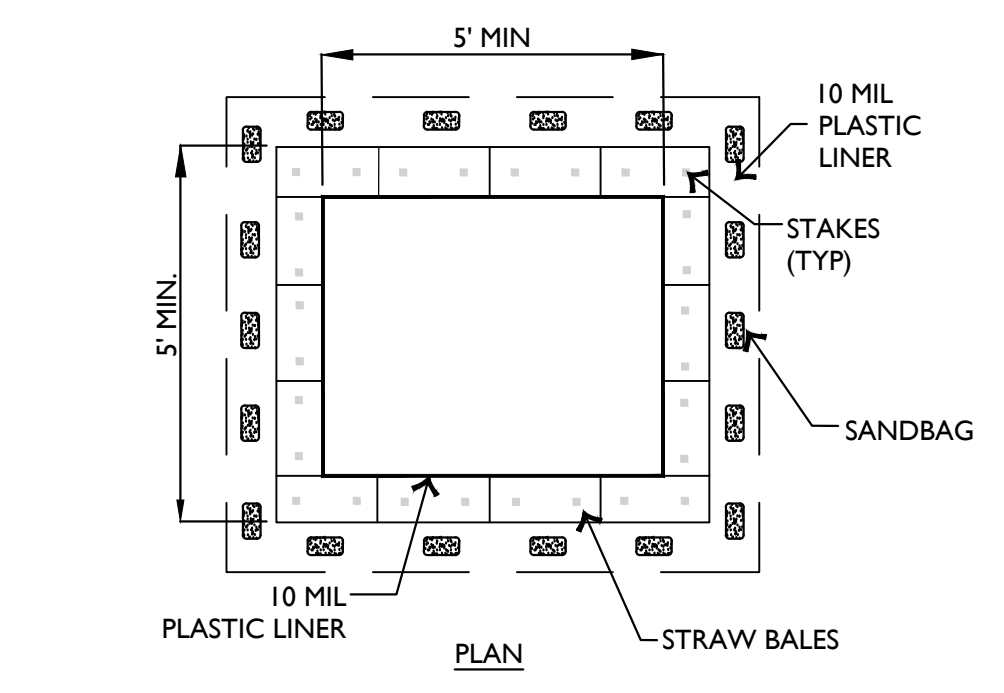


Know what's below.
Call before you dig.



CONSTRUCTION EXIT NOTES

1. REPLACE CONTAMINATED STONE AS REQUIRED TO PREVENT TRACKING OF SEDIMENT OR MUD ON PUBLIC STREETS.
2. CLEAN STREETS DAILY WITH BROOM AND SHOVEL. THE USE OF WATER IS PROHIBITED.
3. ALL VEHICLES MUST USE CONSTRUCTION EXIT.



WASHOUT NOTES

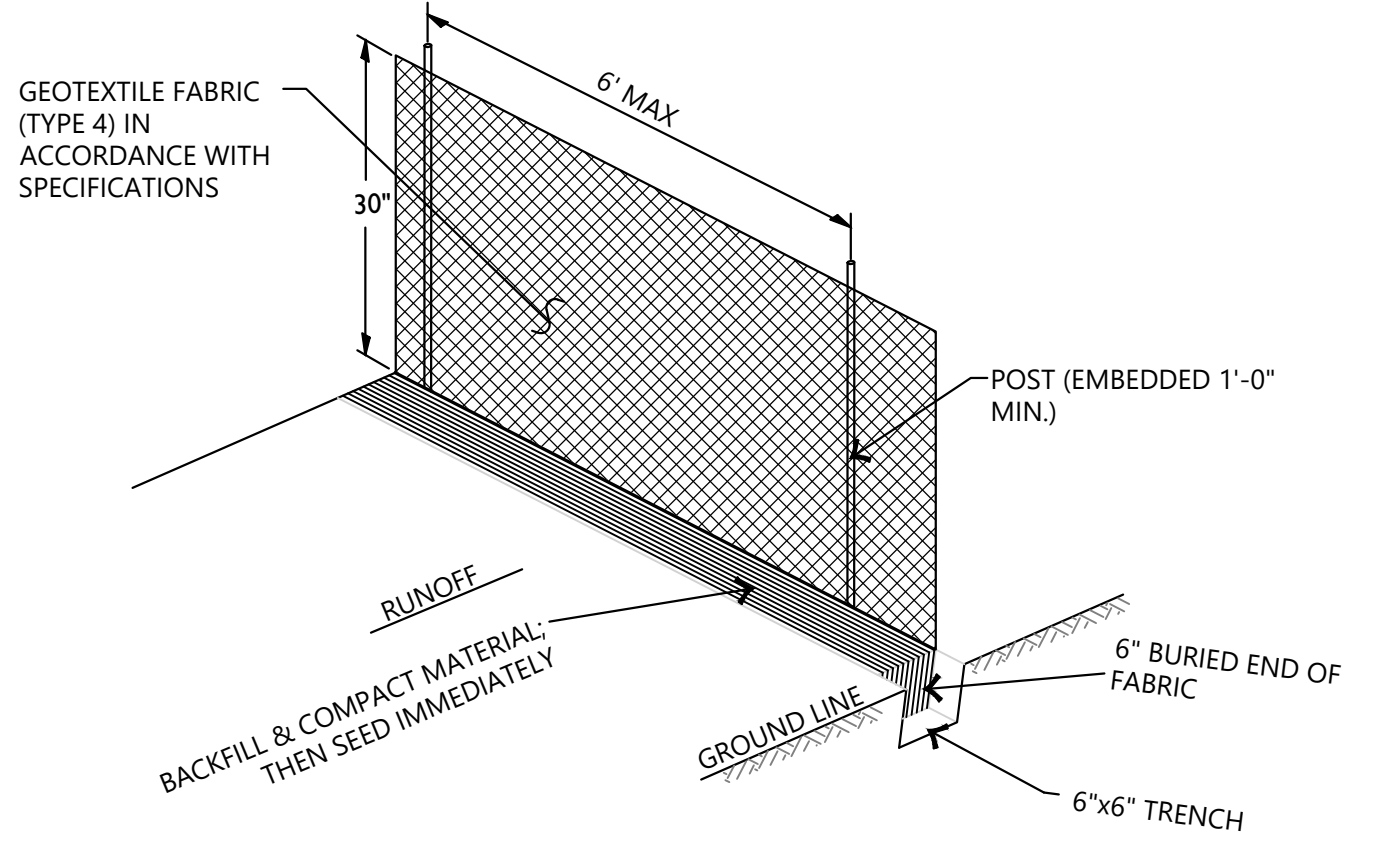
1. NO WASHING OUT OF CONCRETE TRUCKS OR WASHING OF SWEEPINGS FROM EXPOSED AGGREGATE CONCRETE INTO STORM DRAINS, OPEN DITCHES, STREETS, OR STREAMS IS ALLOWED.
2. EXCESS CONCRETE IS NOT ALLOWED TO BE DUMPED ON-SITE, EXCEPT IN DESIGNATED TEMPORARY CONCRETE WASHOUT PIT AREAS.
3. ON-SITE TEMPORARY CONCRETE WASHOUT AREAS WILL BE LOCATED AT LEAST 50 FEET FROM STORM DRAINS, OPEN DITCHES, OR WATER BODIES AS DETERMINED IN THE FIELD.
4. TEMPORARY CONCRETE WASHOUT FACILITIES WILL BE CONSTRUCTED AND MAINTAINED IN SUFFICIENT QUANTITY AND SIZE TO CONTAIN ALL LIQUID AND CONCRETE WASTE GENERATED BY WASHOUT OPERATIONS.
5. WASHOUT FACILITIES WILL BE CLEANED OUT OR REPLACED ONCE THE WASHOUT IS 75% FULL.
6. PLASTIC LINING MATERIAL WILL BE MINIMUM OF 10 MIL POLYETHYLENE SHEETING AND WILL BE FREE OF HOLES, TEARS, OR OTHER DEFECTS.
7. WHEN WASHOUT FACILITIES ARE NO LONGER REQUIRED FOR WORK, THE HARDENED CONCRETE WILL BE REMOVED AND DISPOSED OF OFFSITE. MATERIALS USED TO CONSTRUCT TEMPORARY CONCRETE WASHOUT FACILITIES WILL BE REMOVED FROM THE SITE AND DISPOSED OF.

1 CONSTRUCTION ENTRANCE

SCALE: N.T.S.

2 CONCRETE WASHOUT

SCALE: N.T.S.

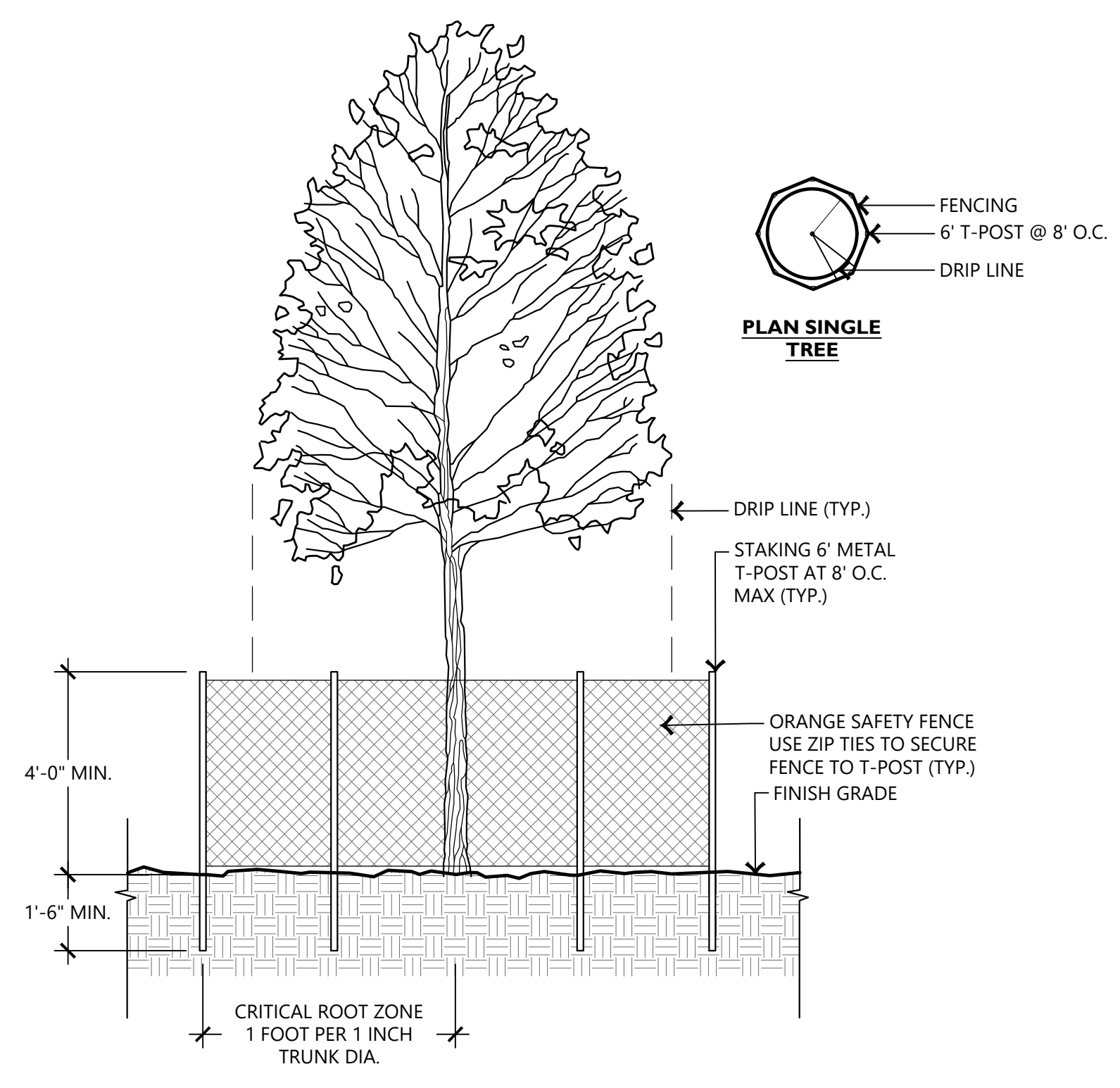


SILT FENCE NOTES:

1. POSTS WHICH SUPPORT THE SILT FENCE SHALL BE INSTALLED ON A SLIGHT ANGLE TOWARD THE ANTICIPATED RUNOFF SOURCE. POST MUST BE EMBEDDED A MINIMUM OF ONE FOOT.
2. THE TOE OF THE SILT FENCE SHALL BE TRENCHED IN WITH A SPADE OR MECHANICAL TRENCHER, SO THAT THE DOWNSLOPE FACE OF THE TRENCH IS FLAT AND PERPENDICULAR TO THE LINE OF FLOW. HERE FENCE CANNOT BE TRENCHED IN (e.g. PAVEMENT), WEIGHT FABRIC FLAP WITH ROCK ON UPHILL SIDE TO PREVENT FLOW FROM SEEPING UNDER FENCE.
3. THE TRENCH MUST BE A MINIMUM OF 6 INCHES DEEP AND 6 INCHES WIDE TO ALLOW FOR THE SILT FENCE FABRIC TO BE LAID IN THE GROUND AND BACKFILLED WITH COMPACTED MATERIAL.
4. SILT FENCE SHOULD BE SECURELY FASTENED TO EACH SUPPORT POST OR TO WOVEN WIRE, WHICH IN TURN IS ATTACHED TO THE FENCE POST. THERE SHALL BE A 3 FOOT OVERLAP, SECURELY FASTENED WHERE ENDS OF FABRIC MEET.
5. REPAIR OR REPLACEMENT SHALL BE MADE PROMPTLY AS NEEDED.
6. SILT FENCE SHALL BE REMOVED WHEN THE SITE IS COMPLETELY STABILIZED SO AS NOT TO BLOCK OR IMPEDE STORM FLOW OR DRAINAGE.
7. ACCUMULATED SILT SHALL BE REMOVED WHEN IT REACHES A DEPTH OF HALF THE HEIGHT OF THE FENCE. THE SILT SHALL BE DISPOSED OF AT AN APPROVED SITE AND IN SUCH A MANNER AS TO NOT CONTRIBUTE TO ADDITIONAL SILTATION.

3 SILT FENCE

SCALE: N.T.S.



4 TREE PRESERVATION FENCING INSTALLATION DETAIL

SCALE: N.T.S.

TREE PROTECTION NOTES:

1. ALL TREES SHOWN ON THIS PLAN TO BE RETAINED SHALL BE PROTECTED DURING CONSTRUCTION WITH TEMPORARY FENCING.
2. PROTECTIVE FENCES SHALL BE INSTALLED PRIOR TO THE START OF ANY SITE PREPARATION WORK AND SHALL BE MAINTAINED THROUGHOUT ALL PHASES OF THE CONSTRUCTION PROJECT.
3. EROSION AND SEDIMENTATION CONTROL BARRIERS SHALL BE INSTALLED OR MAINTAINED IN A MANNER WHICH DOES NOT RESULT IN SOIL BUILD-UP WITH TREE DRIPLINES.
4. PROTECTIVE FENCES SHALL SURROUND THE TREES OR GROUP OF TREES AND WILL BE LOCATED AT THE DRIPLINE. FOR NATURAL AREAS PROTECTIVE FENCES SHALL FOLLOW THE LIMITS OF CONSTRUCTION IN ORDER TO PREVENT THE FOLLOWING:
 - 4.A. SOIL COMPACTION IN THE ROOT ZONE AREA RESULTING FROM VEHICULAR TRAFFIC OR STORAGE OF EQUIPMENT.
 - 4.B. ROOT ZONE DISTURBANCES DUE TO GRADE CHANGES (GREATER THAN 6") OR ROOT TRENCHING NOT VIEWED BY CITY ARBORISTS.
 - 4.C. WOUNDS TO EXPOSED ROOTS, TRUNK OR LIMBS BY MECHANICAL EQUIPMENT.
 - 4.D. OTHER ACTIVITIES DETRIMENTAL TO TREES SUCH AS CHEMICAL STORAGE, CONCRETE TRUCK CLEANING, AND FIRES.
5. EXCEPTIONS TO INSTALLING FENCES AT TREE DRIPLINES MAY BE PERMITTED IN THE FOLLOWING CASES:
 - 5.A. WHERE THERE IS TO BE AN APPROVED GRADE CHANGE, IMPERMEABLE PAVING SURFACED, TREE WELL, OR OTHER SUCH SITE DEVELOPMENT.
 - 5.B. WHERE PERMEABLE PAVING IS TO BE INSTALLED WITHIN A TREE'S DRIPLINE, ERECT THE FENCE AT THE OUTER LIMITS OF THE PERMEABLE PAVING AREA (PRIOR TO SITE GRADING SO THE AREA IS GRADED SEPARATELY PRIOR TO PAVING INSTALLATION TO MINIMIZE ROOT DAMAGE).
 - 5.C. WHERE TREES ARE CLOSE TO THE PROPOSED BUILDINGS, ERECT THE FENCE TO ALLOW 6 TO 10 FEET OF WORK SPACE.
 - 5.D. WHERE THERE ARE SEVERE SPACE CONSTRAINTS DUE TO TRACT SIZE OR OTHER SPECIAL REQUIREMENTS.
6. WHERE ANY OF THE ABOVE EXCEPTIONS RESULT IN A FENCE BEING CLOSER THAN 4 FEET TO A TRUNK, PROTECT THE TRUNK WITH STRAPPED ON PLANKING TO HEIGHT OF 8 FEET (OR LIMITS OF LOWER BRANCHING) IN ADDITION TO THE REDUCED FENCING PROVIDED.
7. TREES APPROVED FOR REMOVAL SHALL BE REMOVED IN A MANNER WHICH DOES NOT IMPACT TREES TO BE PRESERVED.
8. ANY ROOTS EXPOSED BY CONSTRUCTION ACTIVITY SHALL BE PRUNED FLUSH WITH THE SOIL. BACKFILL ROOT AREAS WITH GOOD QUALITY TOPSOIL AS SOON AS POSSIBLE. IF EXPOSED ROOT AREAS ARE NOT BACKFILLED WITHIN 2 DAYS, COVER WITH ORGANIC MATERIAL IN A MANNER WHICH REDUCES SOIL TEMPERATURE AND MINIMIZES WATER LOSS DUE TO EVAPORATION.
9. ANY TRENCHING REQUIRED FOR THE INSTALLATION OF LANDSCAPE IRRIGATION SHALL BE PLACED AS FAR FROM EXISTING TREE TRUNKS AS POSSIBLE.
10. NO LANDSCAPE TOPSOIL DRESSING GREATER THAN 4 INCHES SHALL BE PERMITTED WITHIN THE DRIPLINE OF TREES. NO SOIL IS PERMITTED ON THE ROOT FLARE OF ANY TREE.
11. PRUNING TO PROVIDE CLEARANCE FOR STRUCTURES, VEHICULAR TRAFFIC, AND EQUIPMENT SHALL TAKE PLACE BEFORE CONSTRUCTION BEGINS.
12. ALL FINISHED PRUNING MUST BE DONE ACCORDING TO RECOGNIZED, APPROVED STANDARDS OF THE INDUSTRY (REFERENCE THE AMERICAN NATIONAL STANDARD, ANSI-A300 PRUNING, 2008 OR LATER).

**FORREST CITY
PUBLIC LIBRARY**
Forrest City, Arkansas

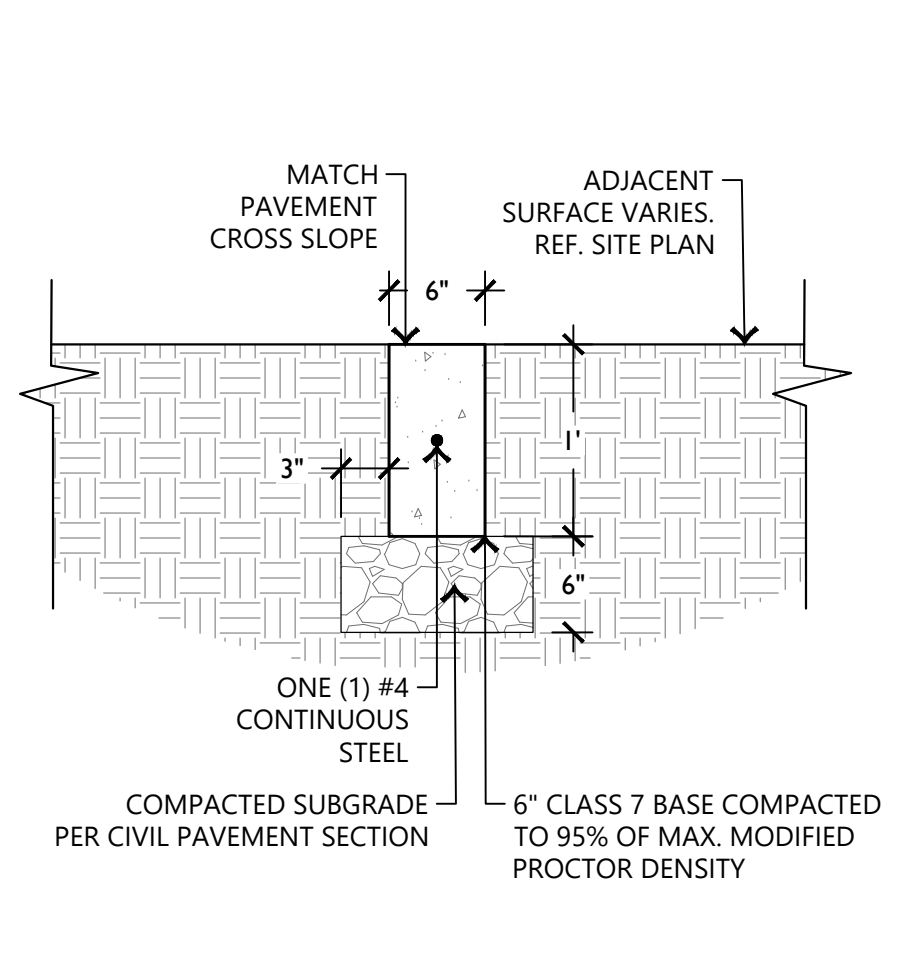
EDGE PROJECT NO. 23-084
DATE 2024.09.20

REVISIONS		
Mark	Date	Description

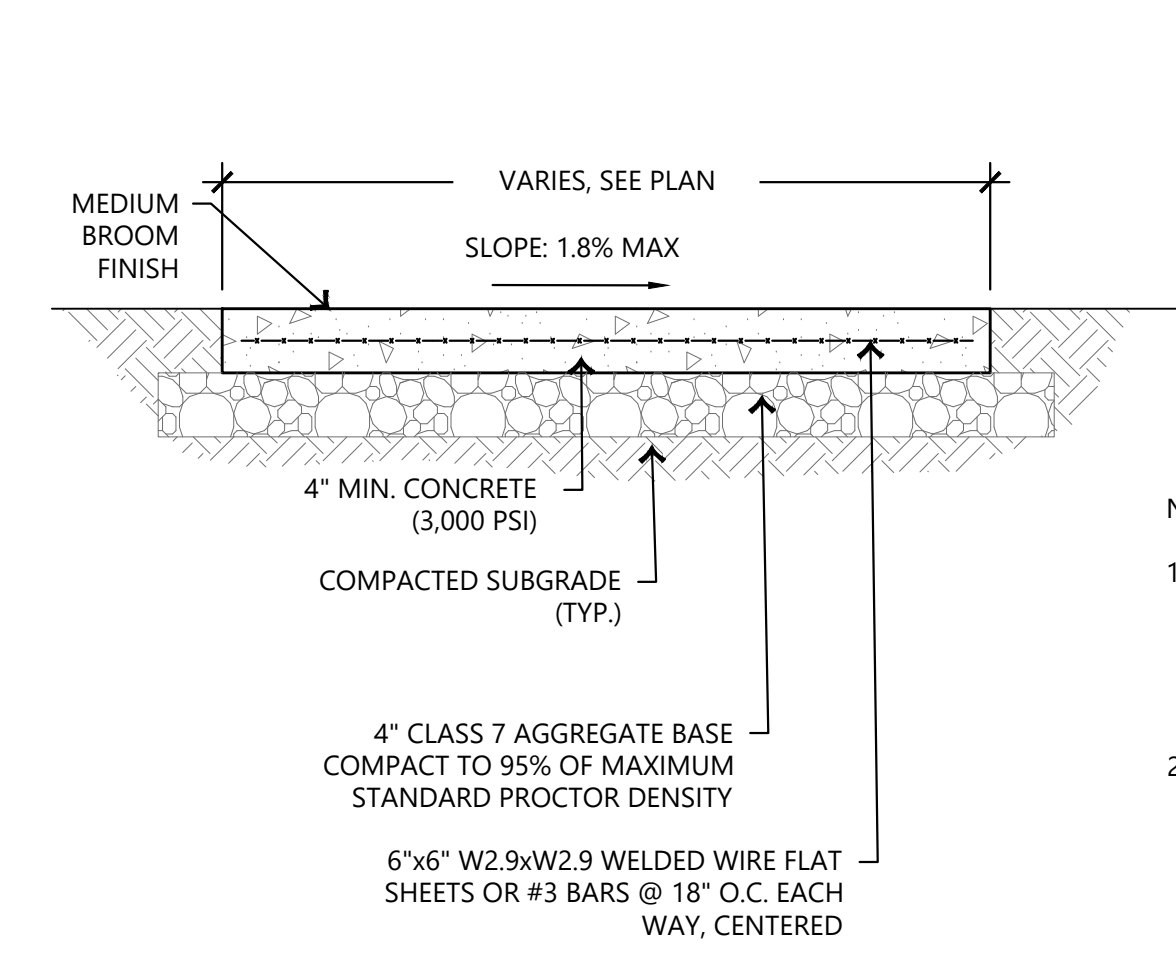
PHASE 100% CONSTRUCTION DOCUMENTS

TITLE DEMOLITION & EROSION CONTROL NOTES & DETAILS

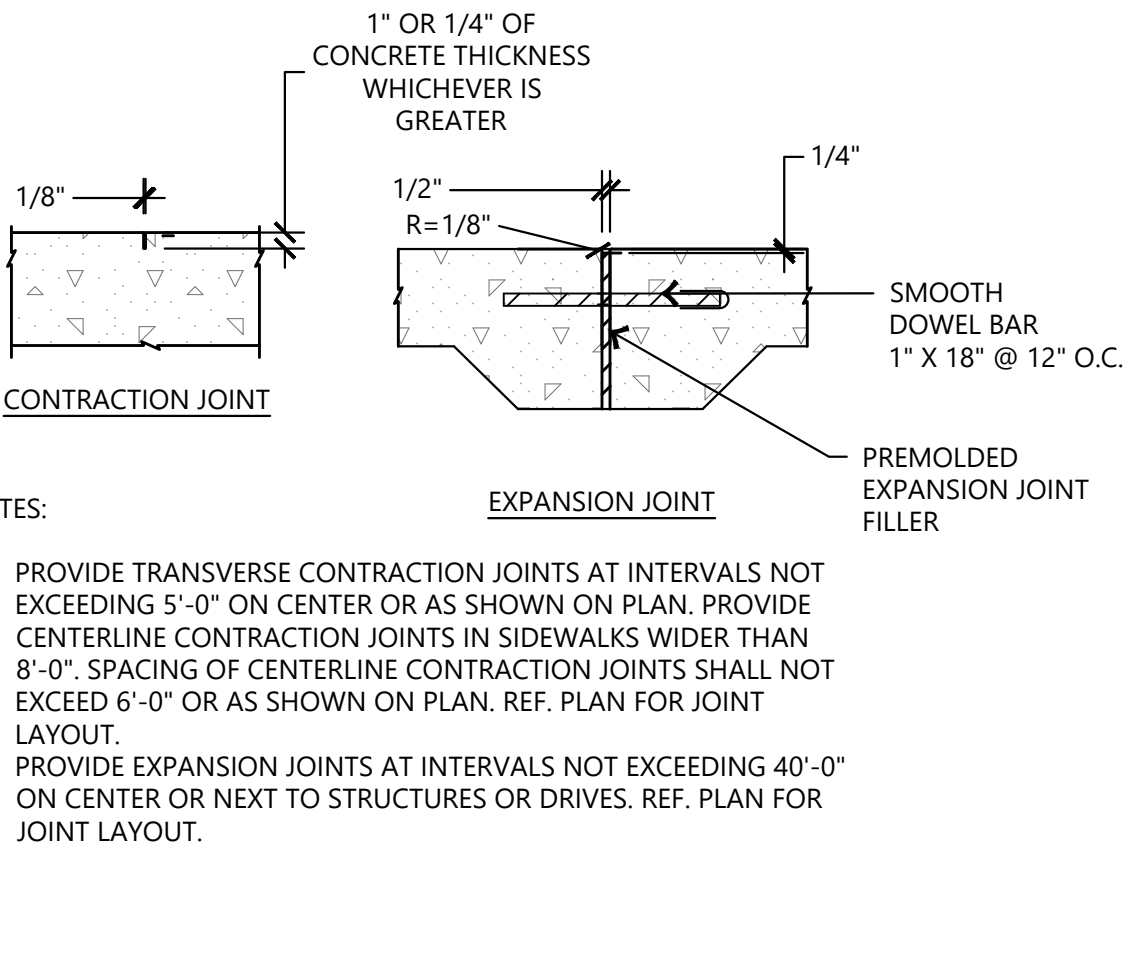
SHEET NO. C0.20



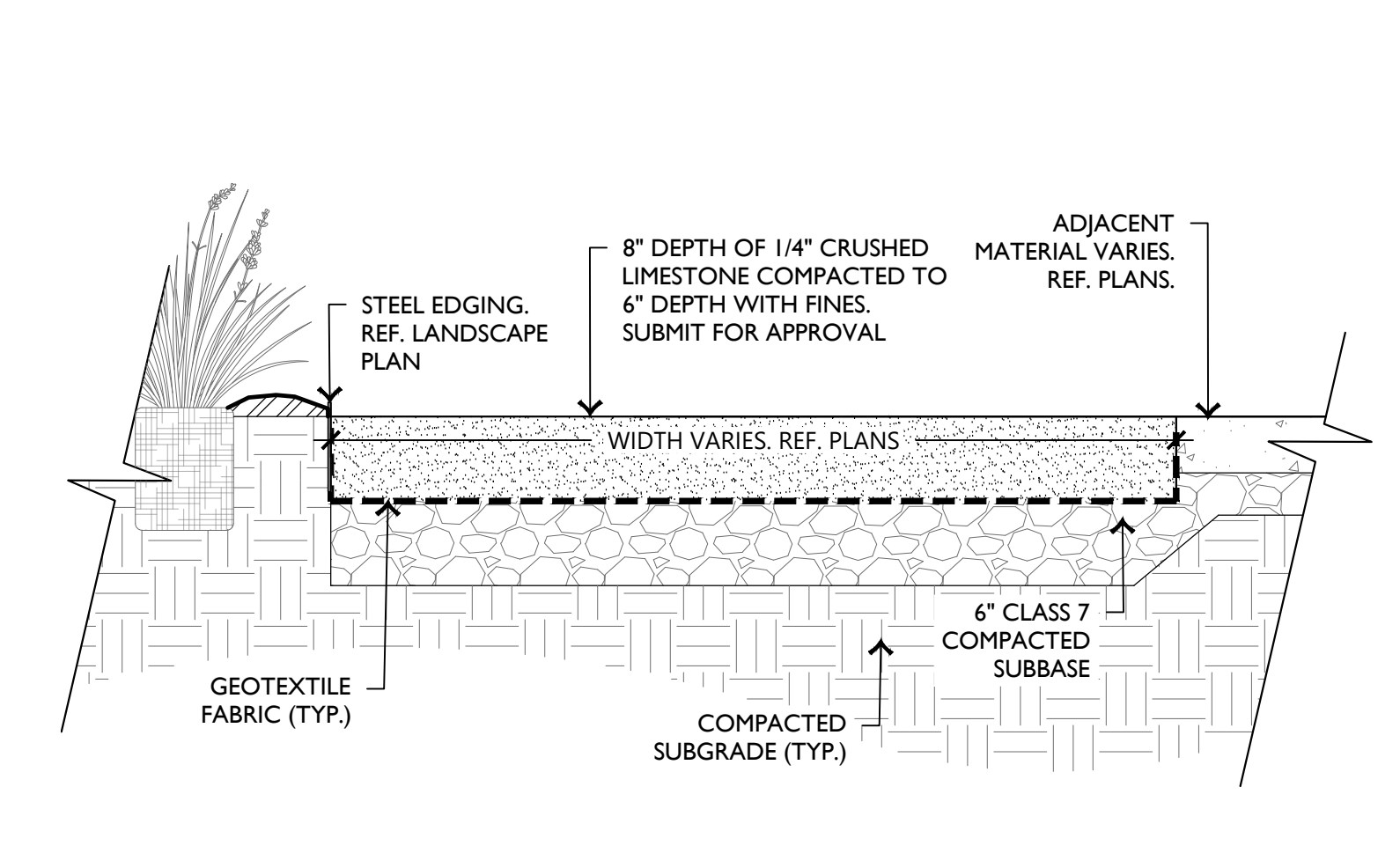
1 CONCRETE RIBBON CURB
SCALE: N.T.S.



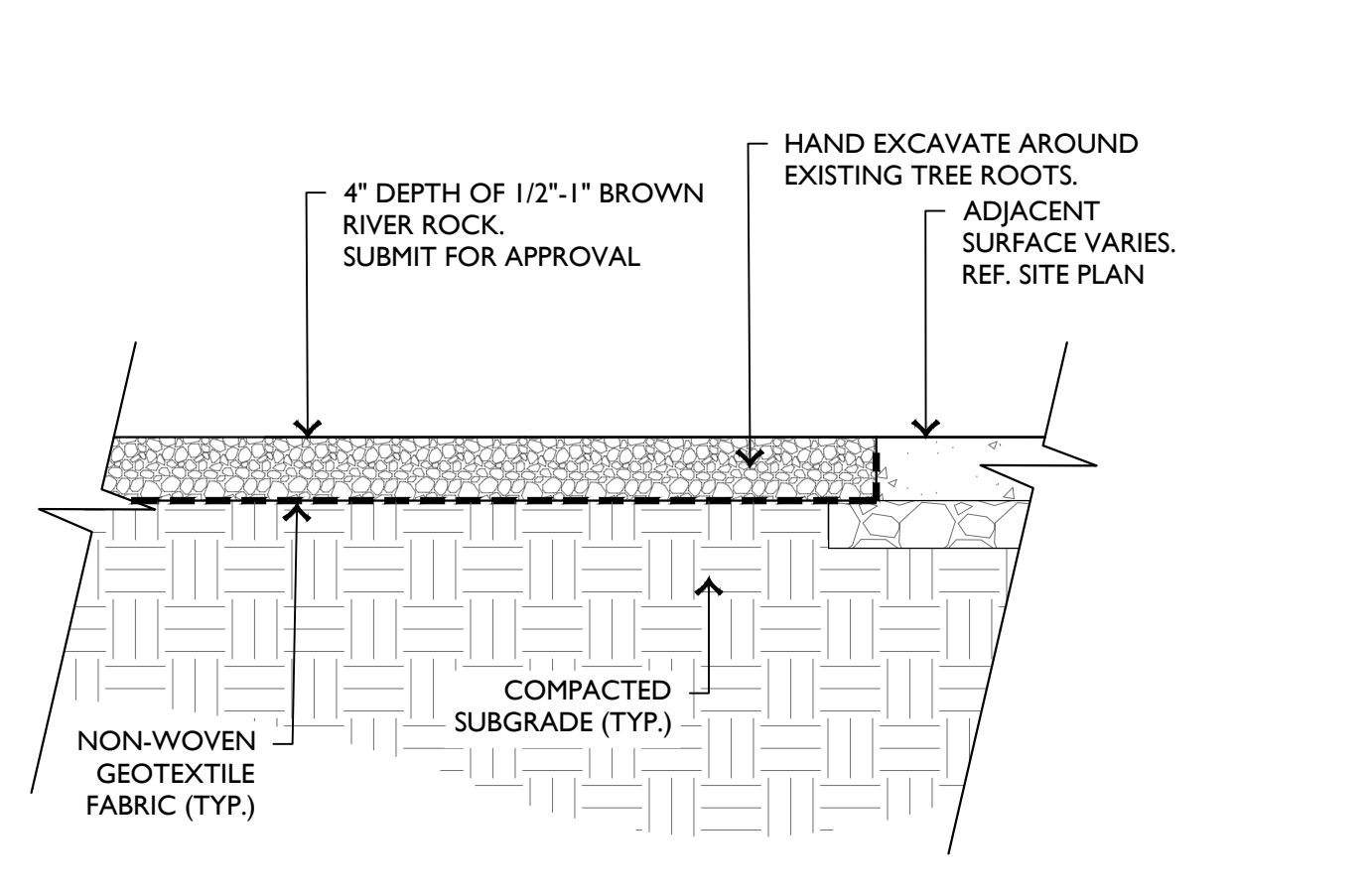
2 TYPICAL CONC. SIDEWALK
SCALE: N.T.S.



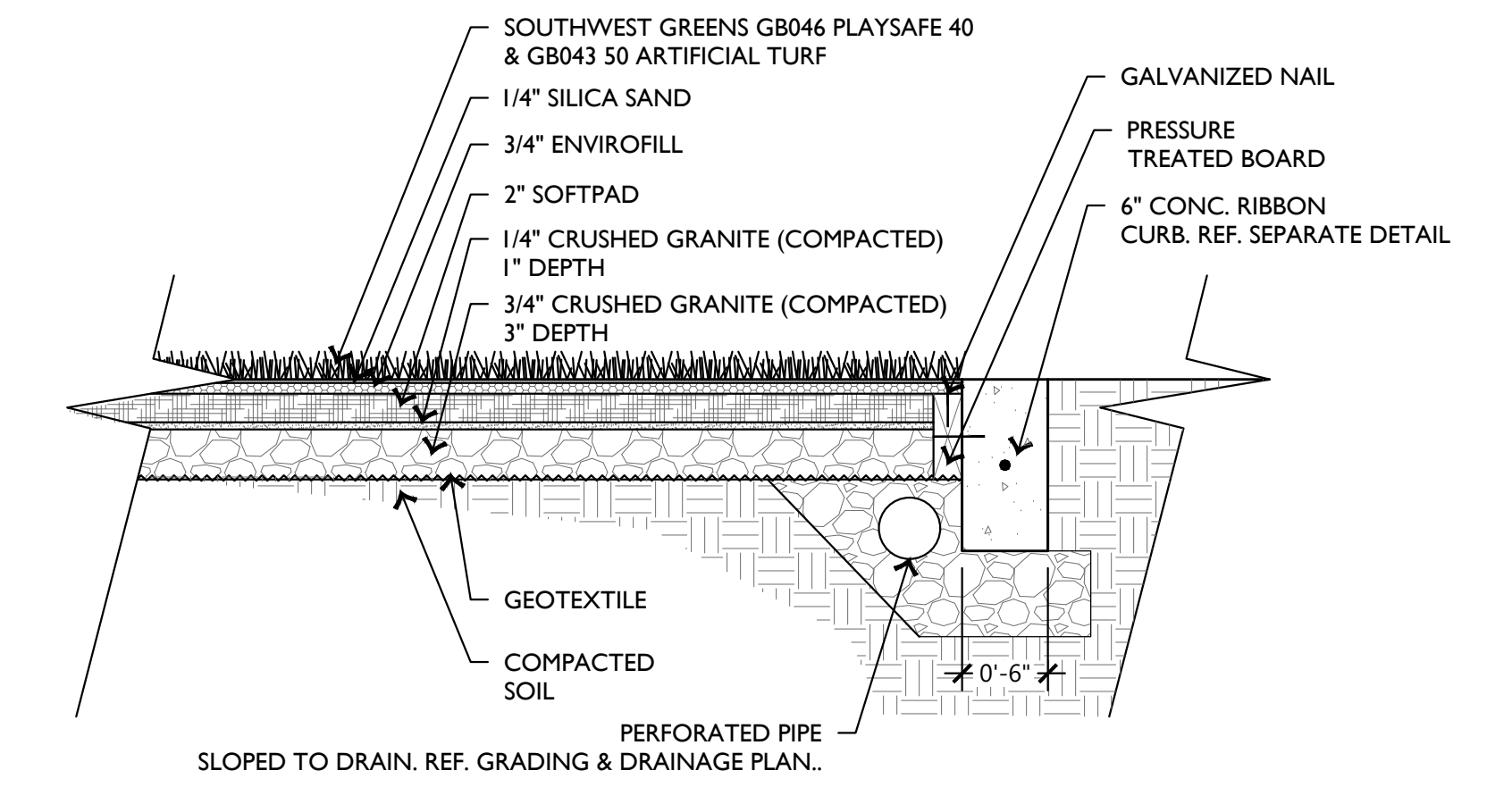
3 CRUSHED STONE
SCALE: N.T.S.



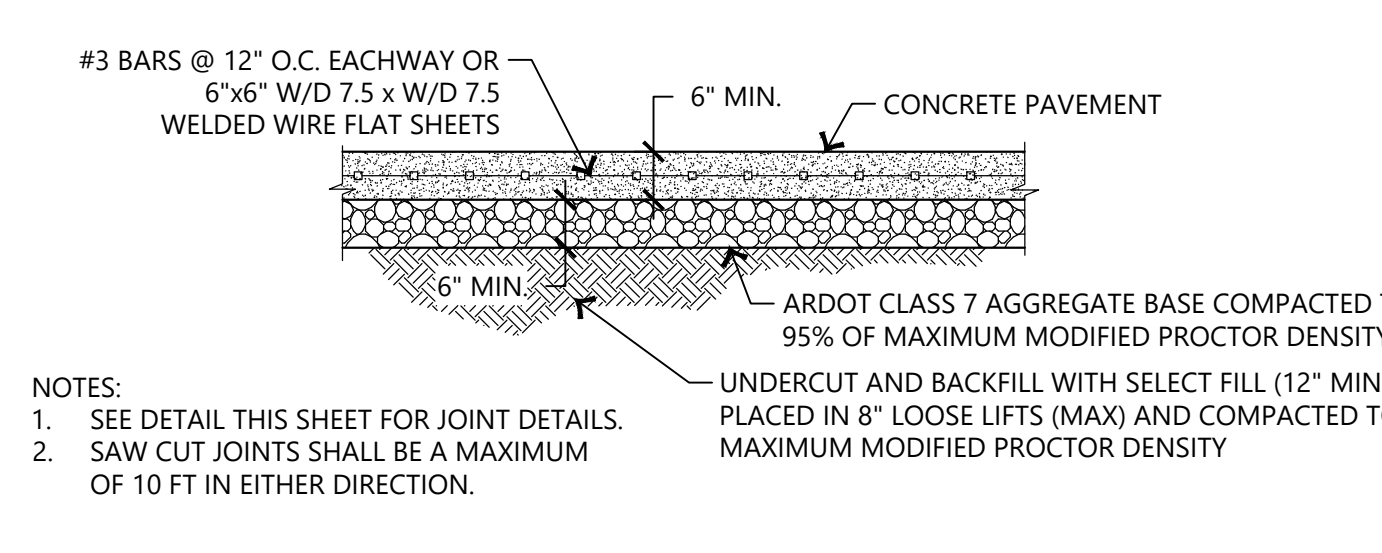
4 FLAGSTONE
SCALE: N.T.S.



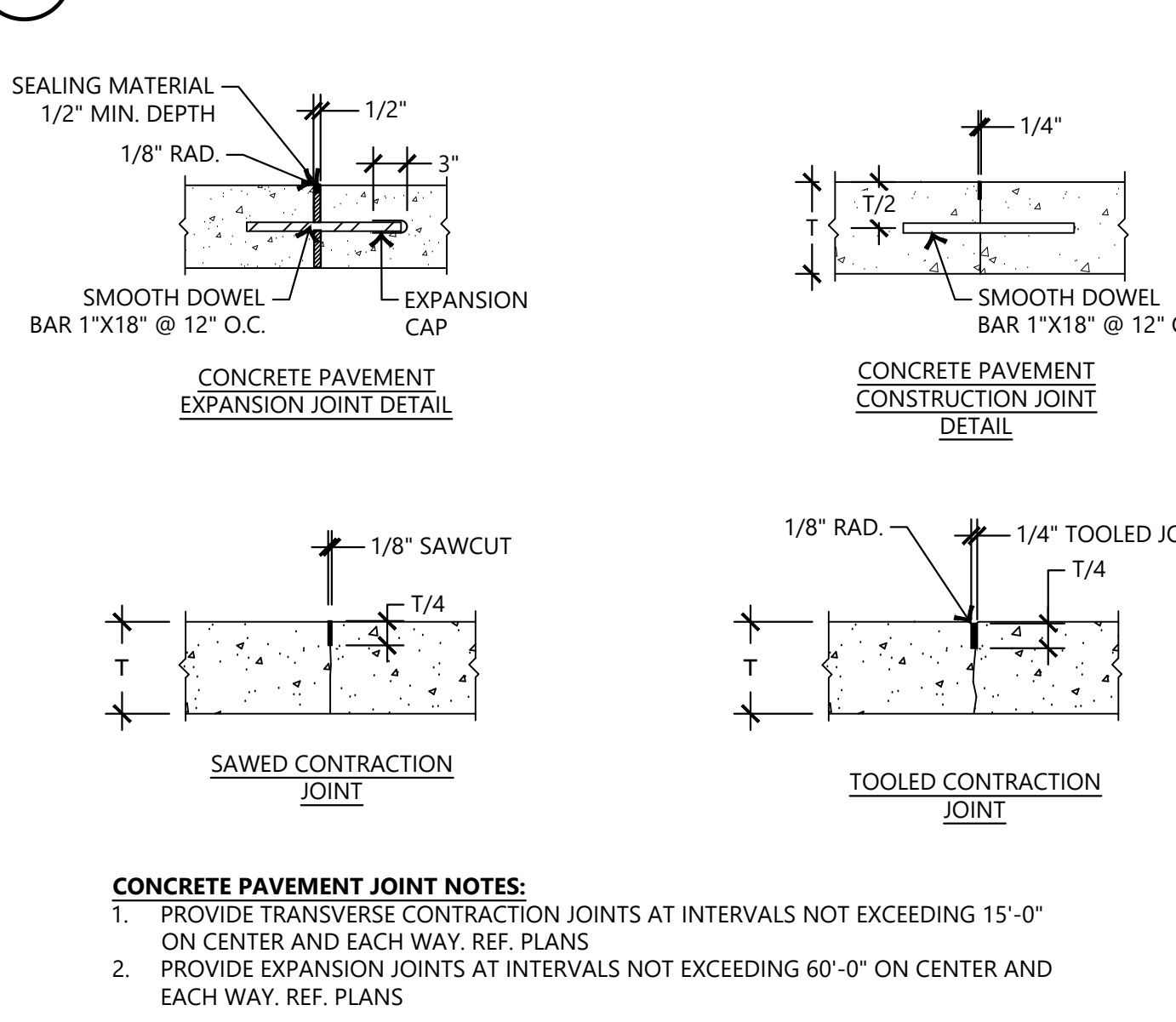
5 LANDSCAPE GRAVEL
SCALE: N.T.S.



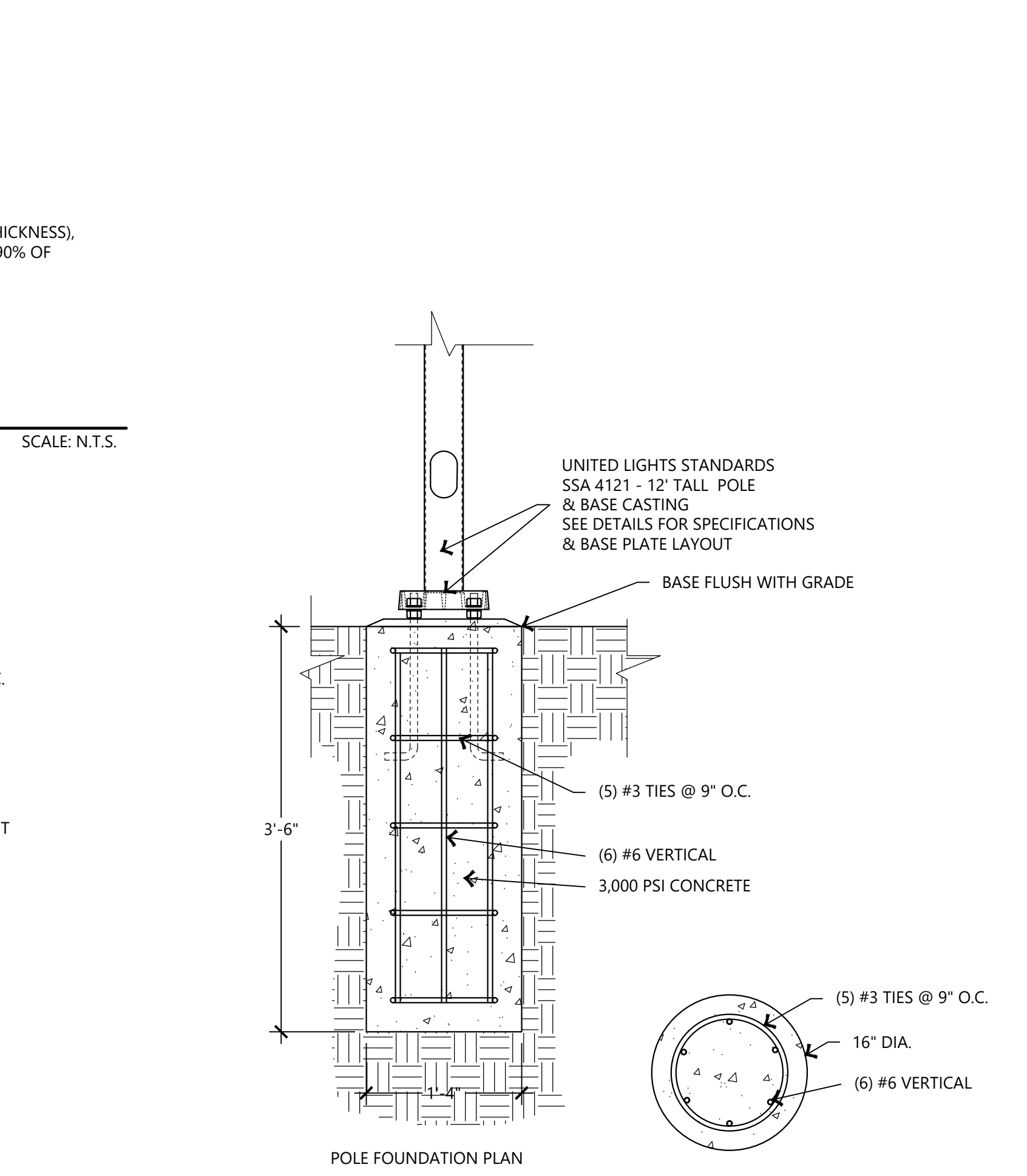
6 PLAYGROUND SURFACE AND DRAINAGE
DETAIL SECTION
SCALE: N.T.S.



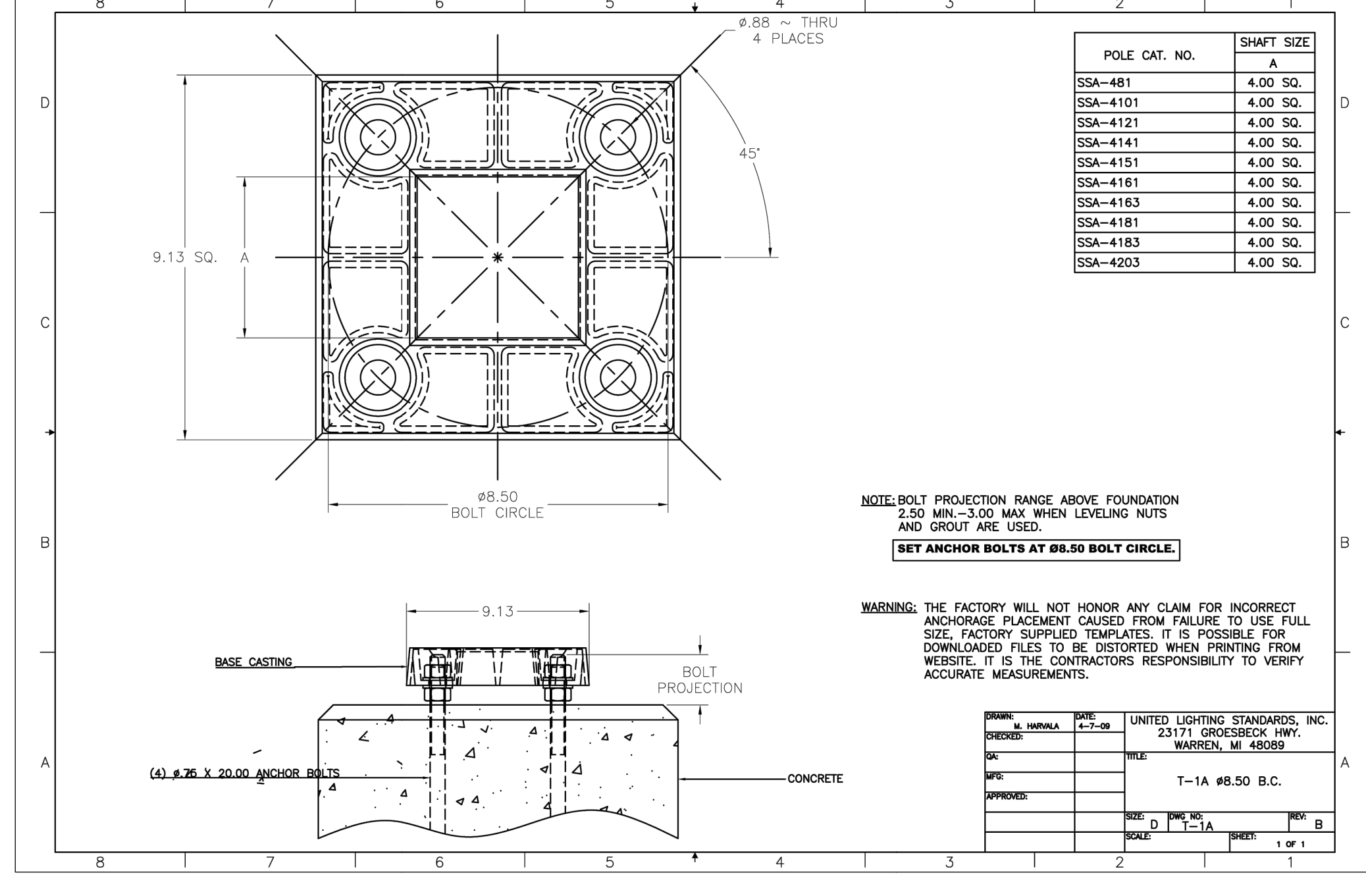
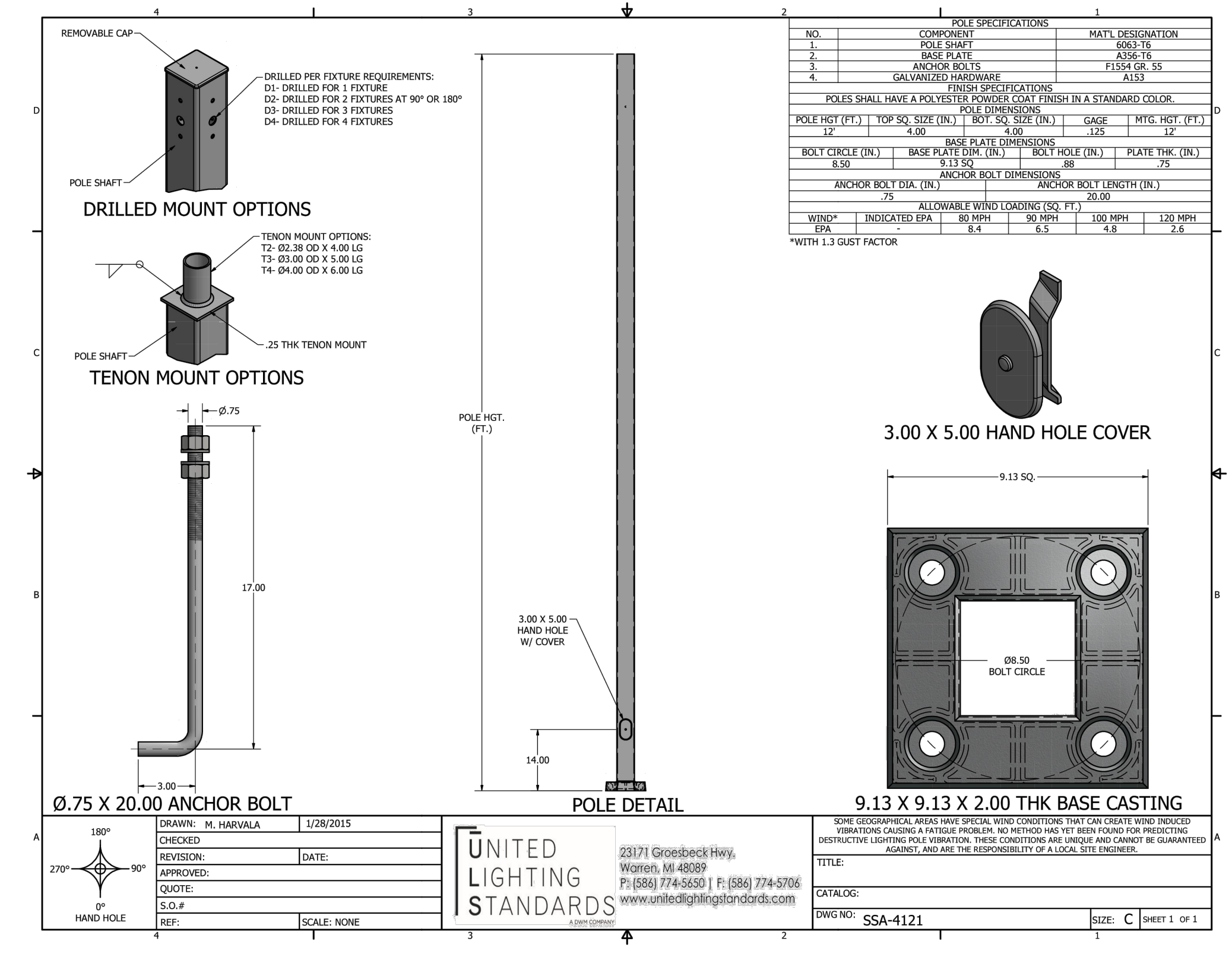
7 TYPICAL CONCRETE PAVEMENT
SCALE: N.T.S.



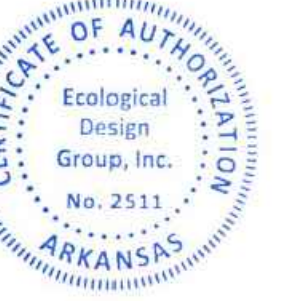
8 CONCRETE PAVEMENT JOINTS
SCALE: N.T.S.



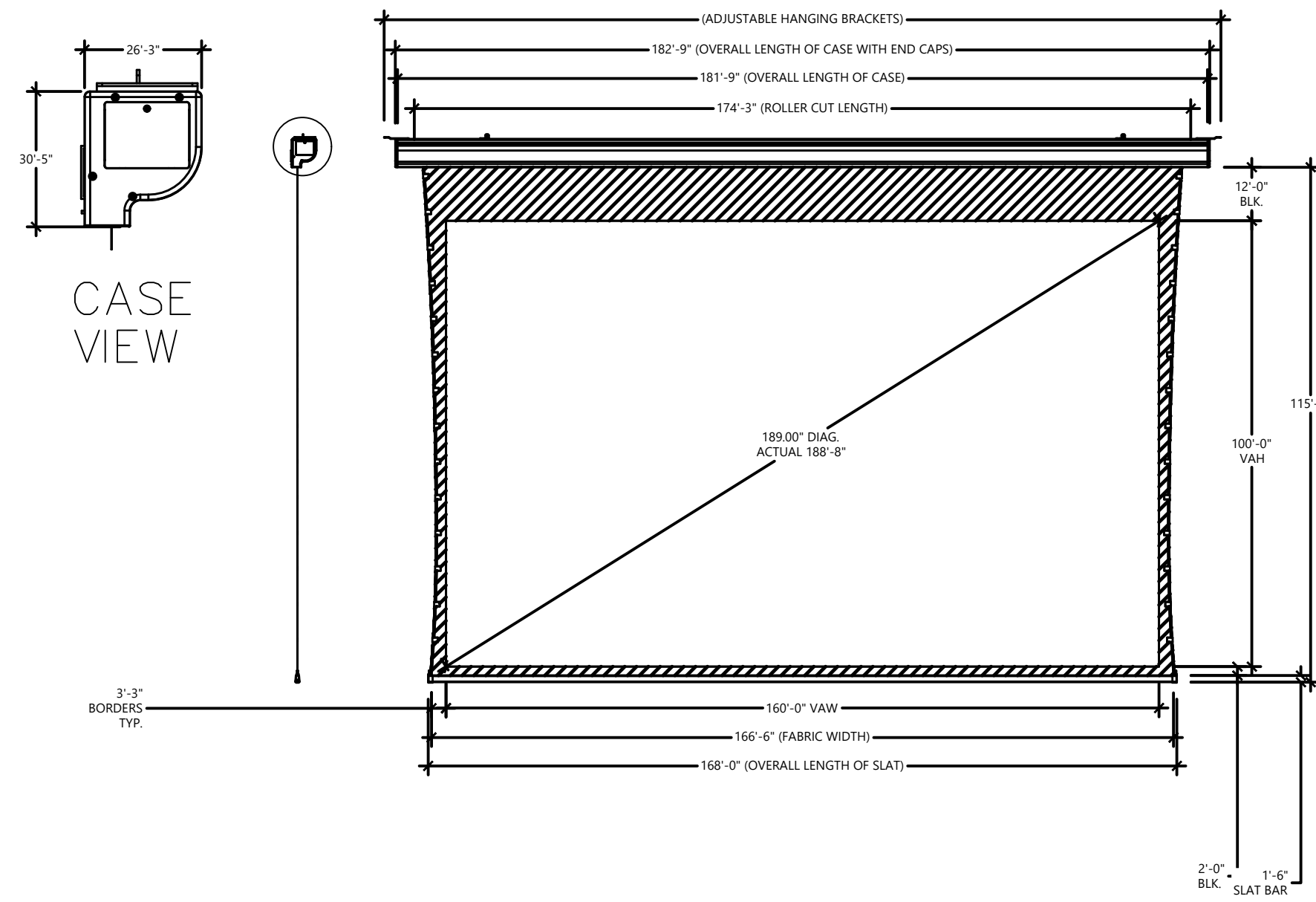
9 LIGHT POLES FOOTING (STRING LIGHTS ONLY)
SCALE: N.T.S.



10 LIGHT POLES (STRING LIGHTS ONLY)
SCALE: N.T.S.



Know what's below.
Call before you dig.



1 SCREEN DETAIL

SCALE: NTS

**FORREST CITY
PUBLIC LIBRARY**
Forrest City, Arkansas

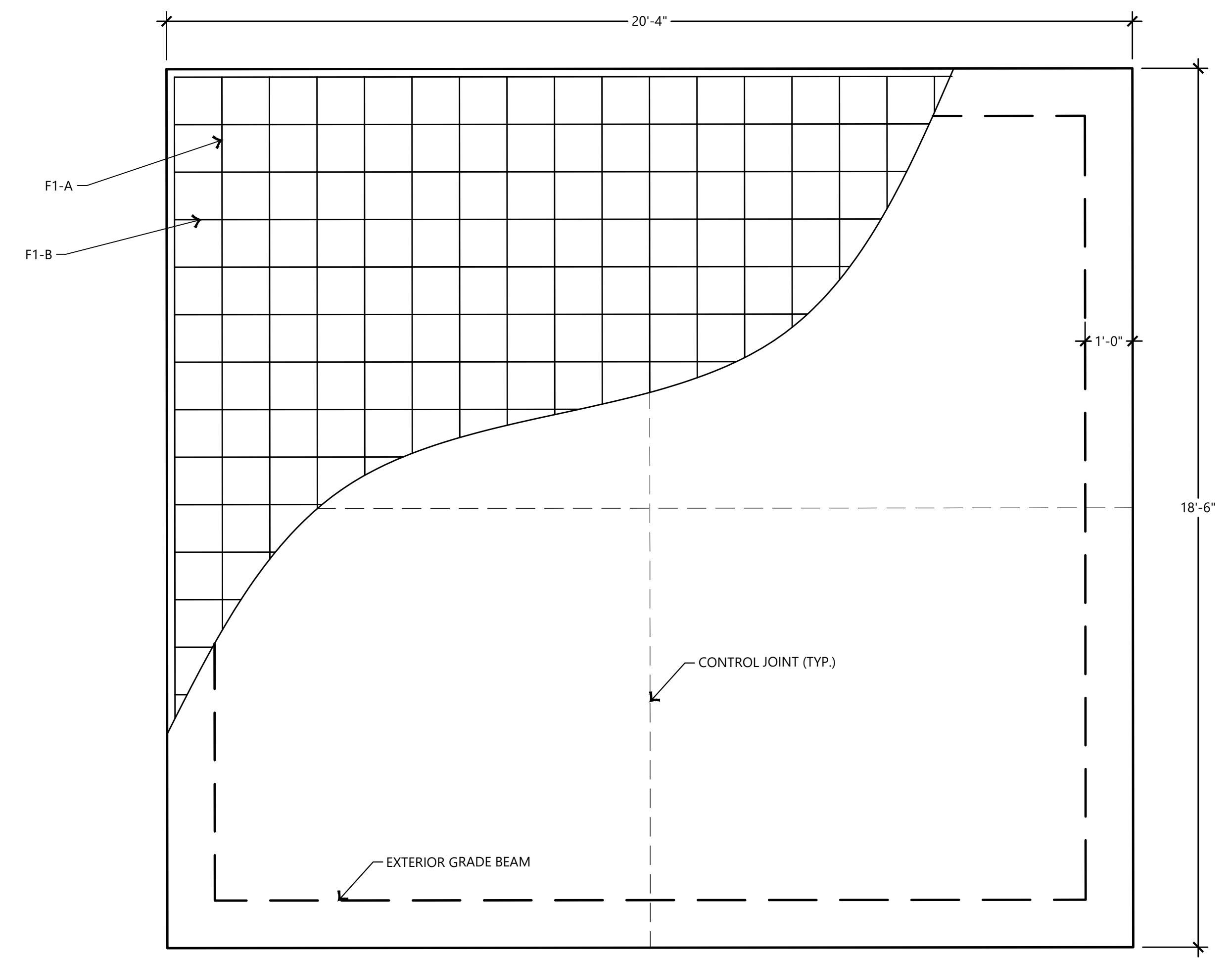
EDG PROJECT NO. 23-084
DATE 2024.09.20

REVISIONS		
Mark	Date	Description

PHASE 100% CONSTRUCTION DOCUMENTS

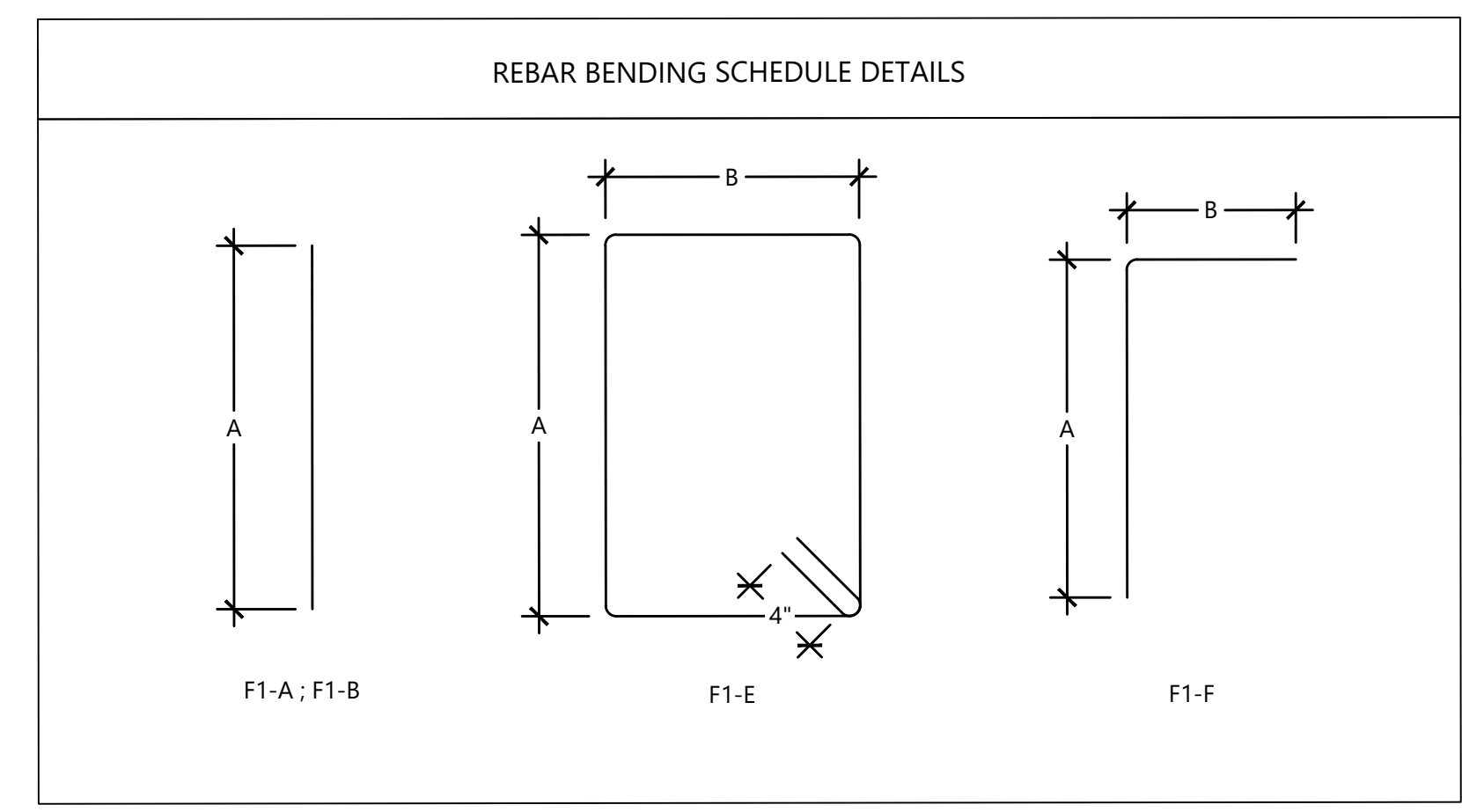
TITLE PAVILION DETAILS

SHEET NO. C3.02



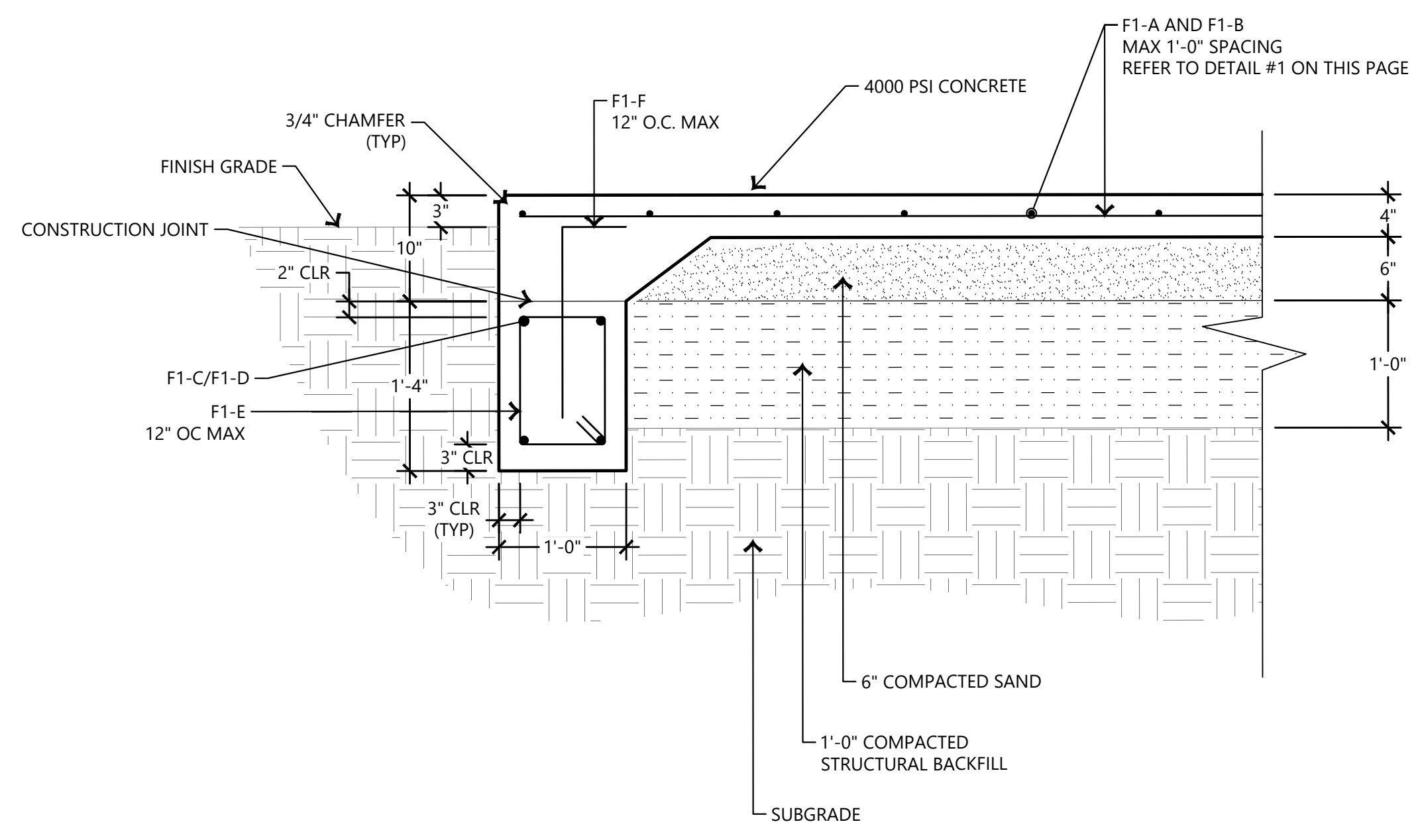
REBAR BENDING SCHEDULE (FOUNDATION F1)

MARK	LENGTH	BAR SIZE	DIMENSIONS (SEE REBAR BENDING SCHEDULE DETAILS)	
			A	B
F1-A	18'-2"	#4	18'-2"	-
F1-B	20'-0"	#4	20'-0"	-
F1-C	18'-2"	#6	18'-2"	-
F1-D	20'-0"	#6	20'-0"	-
F1-E	4'-0"	#4	0'-11"	0'-6"
F1-F	2'-0"	#4	1'-6"	0'-6"



1 FOUNDATION PLAN - F1 SCALE: NTS

2 REBAR BENDING SCHEDULE - F1 SCALE: NTS



3 FOUNDATION ELEVATION - F1 SCALE: NTS

FORREST CITY PUBLIC LIBRARY
 Forrest City, Arkansas

EDG PROJECT NO. 23-084
 DATE 2024.09.20

REVISIONS

Mark	Date	Description

PHASE 100% CONSTRUCTION DOCUMENTS

TITLE PAVILION DETAILS

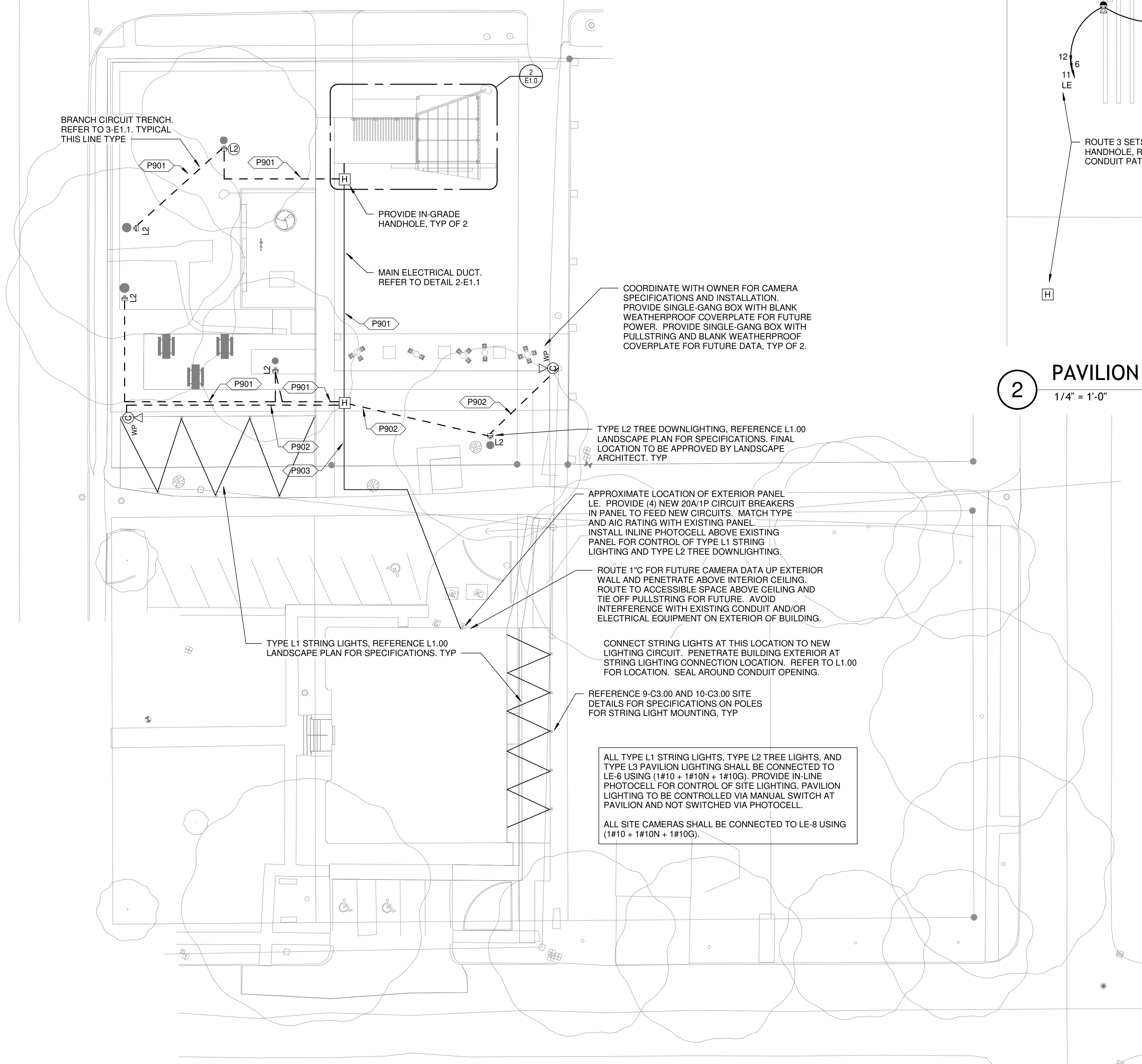
SHEET NO. C3.03

KEYNOTES

P901 PROVIDE 1"Ø FOR CIRCUITRY. REFER TO PLANS FOR WIRE SIZE.

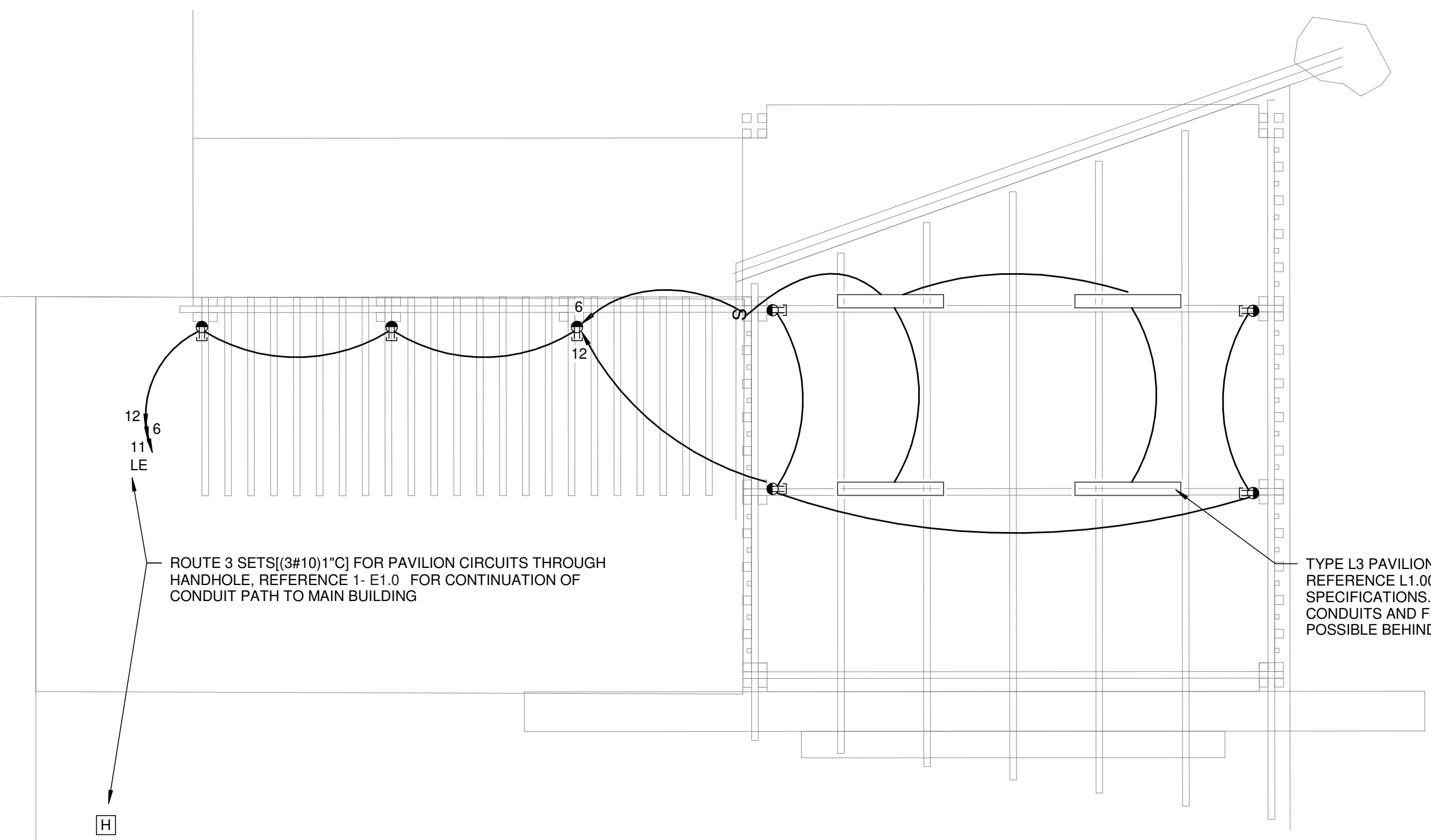
P902 PROVIDE 1"Ø FOR FUTURE SECURITY CAMERA DATA. PROVIDE 1"Ø FOR CIRCUITRY. REFER TO PLANS FOR WIRE SIZE.

P903 PROVIDE 1"Ø FOR FUTURE SECURITY CAMERA DATA. PROVIDE (2) 1"Ø FOR CIRCUITRY. ROUTE CAMERA POWER IN SEPARATE CONDUIT. REFER TO PLANS FOR WIRE SIZE.

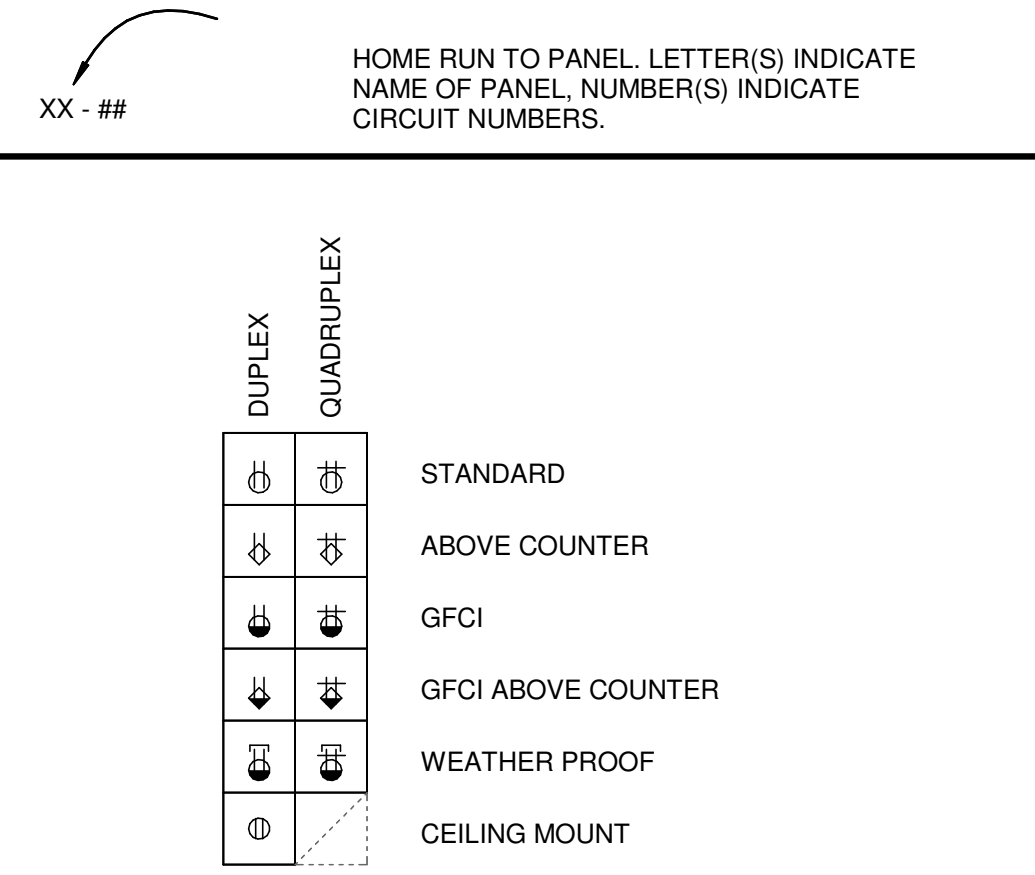


1 ELECTRICAL PLAN
 1" = 20'-0"
 NORTH

2 PAVILION ELECTRICAL PLAN
 1/4" = 1'-0"
 NORTH



ABBREVIATION OR SYMBOL	DESCRIPTION	EQUIPMENT AND CONDUIT LINE TYPES
	FIXTURE DESIGNATION	
	2x4 LAY-IN OR SURFACE MOUNTED FIXTURE	FURNISH + INSTALL NEW
	2x4 LAY-IN OR SURFACE MOUNTED FIXTURE; SHADING INDICATES EMERGENCY POWERED BATTERY	EXISTING
	2x2 LAY-IN OR SURFACE MOUNTED FIXTURE	DEMOLISH
	2x4 LAY-IN OR SURFACE MOUNTED FIXTURE; SHADING INDICATES EMERGENCY POWERED BATTERY	UNDERGROUND CONNECT TO EXISTING
	SURFACE OR STRIP FIXTURE	CONDUIT TYPE (SEE ABBREVIATIONS) REFER TO SPECIFICATIONS IF NOT SHOWN
	RECESSED STRIP FIXTURE; SHADING INDICATES EMERGENCY POWERED BATTERY	CONDUIT SIZE
	RECESSED DOWNLIGHT	GROUNDED (NEUTRAL) CONDUCTOR, NUMBER AND SIZE
	RECESSED DOWNLIGHT; SHADING INDICATES EMERGENCY POWERED BATTERY	GROUNDED (NEUTRAL) CONDUCTOR, NUMBER AND SIZE
	WALL-MOUNTED LINEAR FIXTURE	PHASE (HOT) CONDUCTOR, NUMBER & SIZE
	DOWNLIGHT FIXTURE	NUMBER OF SETS
	DOWNLIGHT FIXTURE; SHADING INDICATES EMERGENCY POWERED BATTERY	
	WALL-MOUNTED FIXTURE	
	EXIT SIGN; LED TYPE. DARKENED AREA INDICATES FACE, ARROWS INDICATE DIRECTION OF EGRESS	
	RECESSED ELECTRICAL PANEL WITH REQUIRED CLEARANCE	
	SURFACE MOUNTED ELECTRICAL PANEL WITH REQUIRED CLEARANCE	
	COMBINATION STARTER DISCONNECT SWITCH	
	NON FUSED DISCONNECT SWITCH	
	FUSED DISCONNECT SWITCH	
	MOTOR STARTER	
	MOTOR	
	JUNCTION BOX	
	SPECIALTY JUNCTION BOX WITH DESIGNATION "XYZ". REFER TO JBOX ABBREVIATION LEGEND.	



**FORREST CITY
 PUBLIC LIBRARY**
 Forrest City, Arkansas

BE PROJECT NO. EDG-002
 DATE 2024.09.09

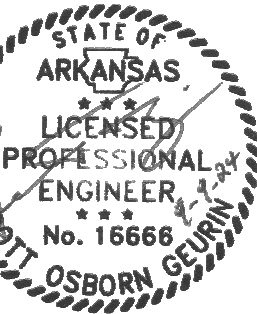
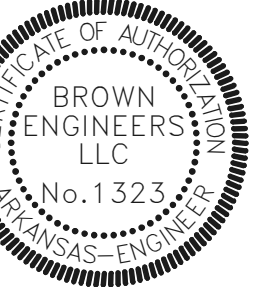
REVISIONS

Number	Date

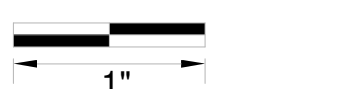
PHASE 100% CONSTRUCTION DOCUMENTS
 TITLE ELECTRICAL PLAN
 SHEET NO. E1.0



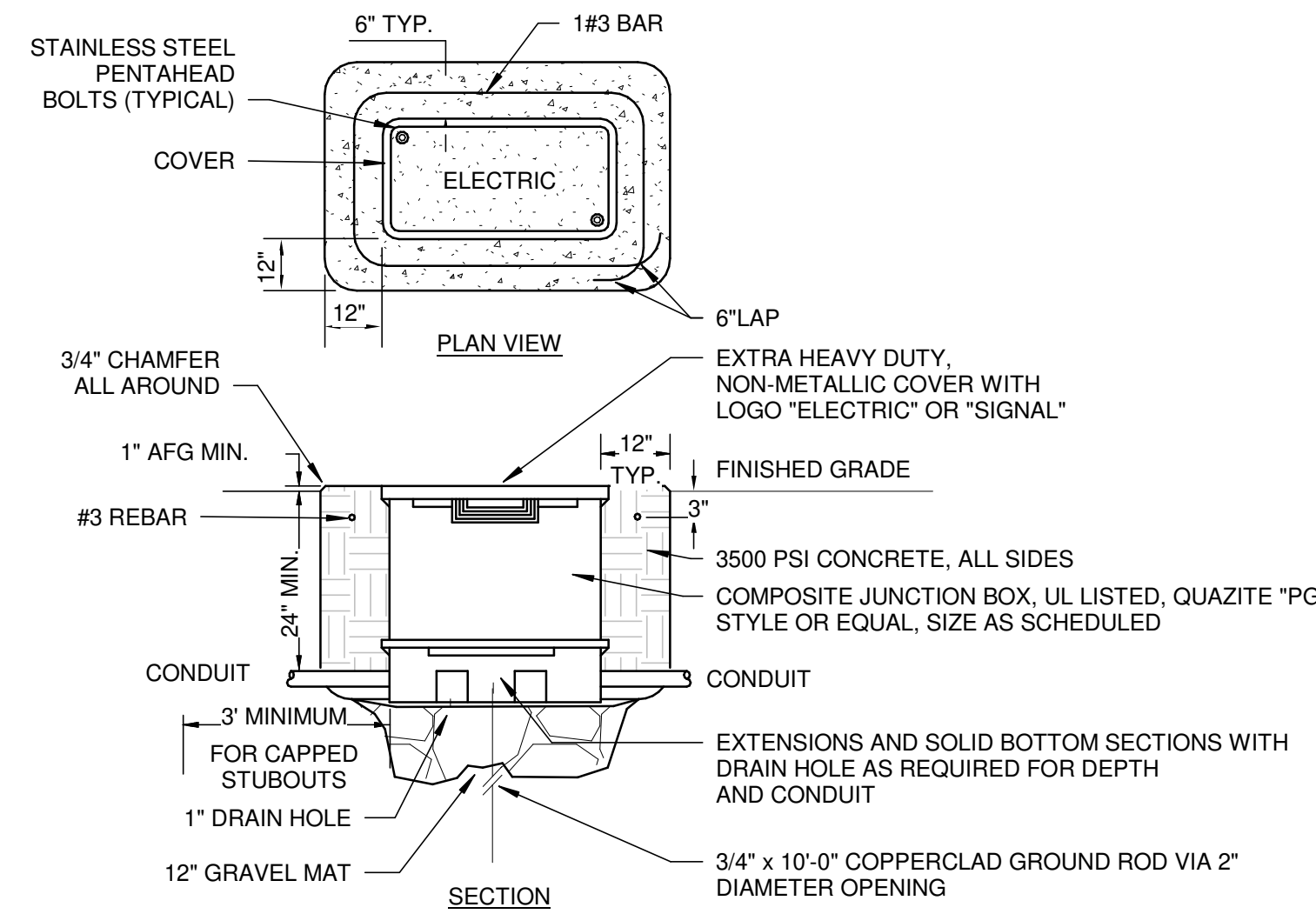
17200 Chenal Pkwy,
 Suite 300 PMB 324
 Little Rock, AR 72223
 Phone 501-448-0100
 www.browngineers.net



Know what's below.
 Call before you dig.



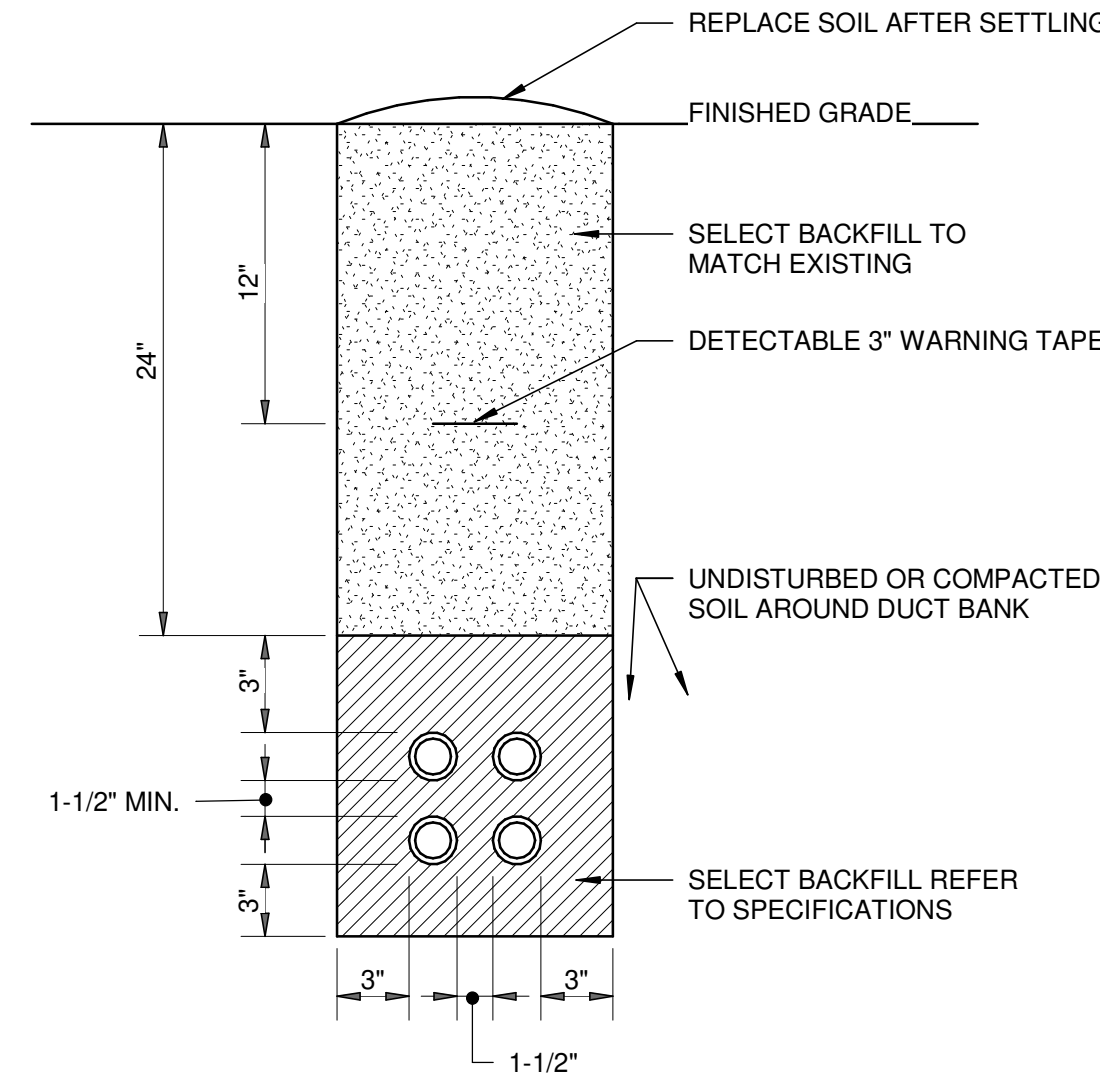
ONE INCH AT FULL SIZE IF NOT
 ONE INCH SCALE ACCORDINGLY



NOTES:

- HANDHOLE AND EXTRA HEAVY-DUTY COVER SHALL BE DESIGNED FOR A TEST LOAD OF 33,750 LBS AND A DESIGN LOAD OF 22,500 LBS.
- PROVIDE HANDHOLE WITH 2-2" C STUBOUTS IN EACH FACE, CAPPED WATERTIGHT.
- HANDHOLE INTERIOR DIMENSIONS SHALL BE 30"L x 17"W x 28"D.
- PROVIDE MINIMUM 3' SLACK CABLE LOOP FOR EACH CABLE.
- COLOR CODE, TAG AND IDENTIFY ALL CABLES IN HANDHOLE.
- EXACT LOCATION OF EACH HANDHOLE SHALL BE APPROVED BY THE OWNER AND ENGINEER.

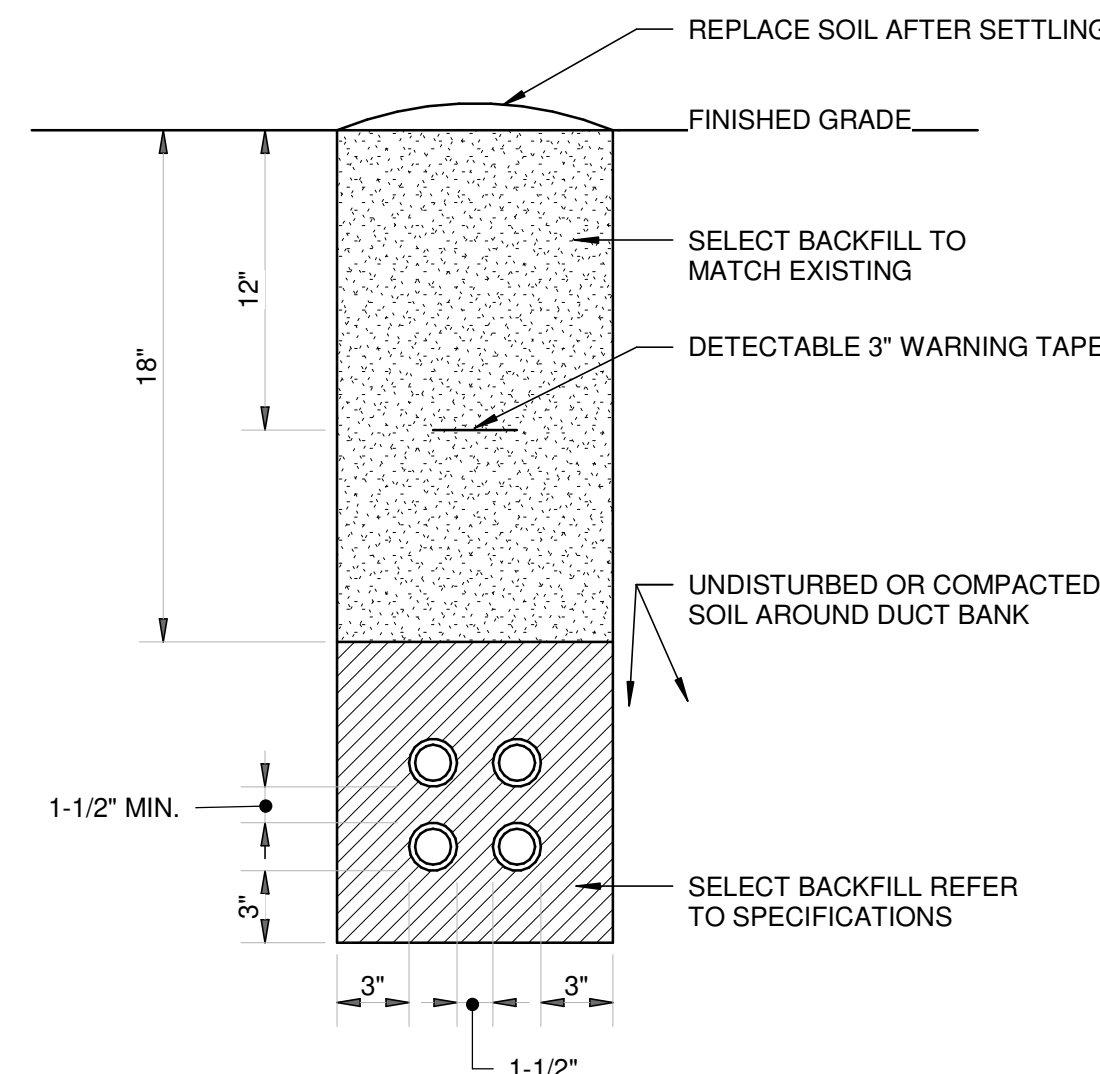
1 HANDHOLE DETAIL
 NOT TO SCALE



ELECTRICAL DUCT NOTES:

- CONTRACTOR SHALL STAKE THE DUCT INSTALLATION IN PLAN AND ELEVATION FOR NEW ELECTRICAL DUCTS TO AVOID EXISTING UTILITIES.
- CONTRACTOR SHALL ADJUST THE DEPTH OF THE ELECTRICAL DUCTS AS REQUIRED TO MAINTAIN THE MINIMUM COVER REQUIREMENT INDICATED AND AVOID EXISTING UTILITIES.
- OFFSETS AND BENDS OVER 10 DEGREES AND ELBOWS IN PVC CONDUIT RUNS SHALL BE GALVANIZED RIGID STEEL CONDUIT.
- NO PVC SHALL EMERGE FROM THE GROUND OR CONCRETE SLAB OR ENCASEMENT, PVC SHALL CONVERT TO GALVANIZED RIGID STEEL CONDUIT PRIOR TO ITS EMERGENCE.
- INSTALL CONDUCTORS AND CABLES AS NOTED ON DRAWING. INSTALL PULLWIRE IN ALL SPARE DUCTS.
- MINIMUM COVER REQUIREMENT FOR DUCT BANKS UNDER ROADS, DRIVEWAYS AND PARKING LOTS SHALL BE 24".

2 TRENCH DETAIL - MAIN TRENCH
 NOT TO SCALE



ELECTRICAL DUCT NOTES:

- CONTRACTOR SHALL STAKE THE DUCT INSTALLATION IN PLAN AND ELEVATION FOR NEW ELECTRICAL DUCTS TO AVOID EXISTING UTILITIES.
- CONTRACTOR SHALL ADJUST THE DEPTH OF THE ELECTRICAL DUCTS AS REQUIRED TO MAINTAIN THE MINIMUM COVER REQUIREMENT INDICATED AND AVOID EXISTING UTILITIES.
- OFFSETS AND BENDS OVER 10 DEGREES AND ELBOWS IN PVC CONDUIT RUNS SHALL BE GALVANIZED RIGID STEEL CONDUIT.
- NO PVC SHALL EMERGE FROM THE GROUND OR CONCRETE SLAB OR ENCASEMENT, PVC SHALL CONVERT TO GALVANIZED RIGID STEEL CONDUIT PRIOR TO ITS EMERGENCE.
- INSTALL CONDUCTORS AND CABLES AS NOTED ON DRAWING. INSTALL PULLWIRE IN ALL SPARE DUCTS.
- MINIMUM COVER REQUIREMENT FOR DUCT BANKS UNDER ROADS, DRIVEWAYS AND PARKING LOTS SHALL BE 24".

3 TRENCH DETAIL - BRANCH CIRCUIT TRENCH
 NOT TO SCALE

**FORREST CITY
 PUBLIC LIBRARY**
 Forrest City, Arkansas

BE PROJECT NO. EDG-002
 DATE 2024.09.09

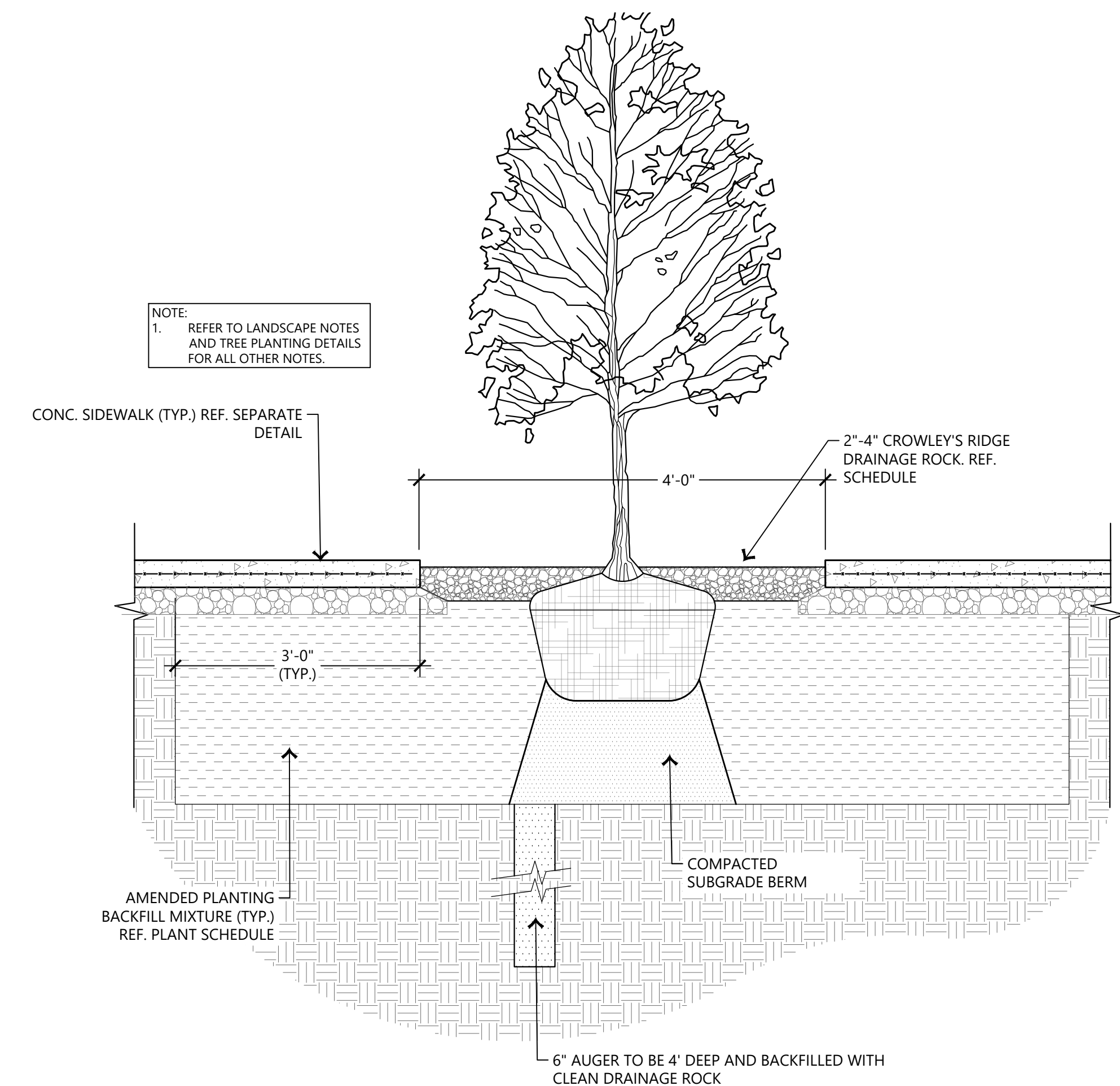
REVISIONS	
Number	Date

PHASE 100%
 CONSTRUCTION
 DOCUMENTS

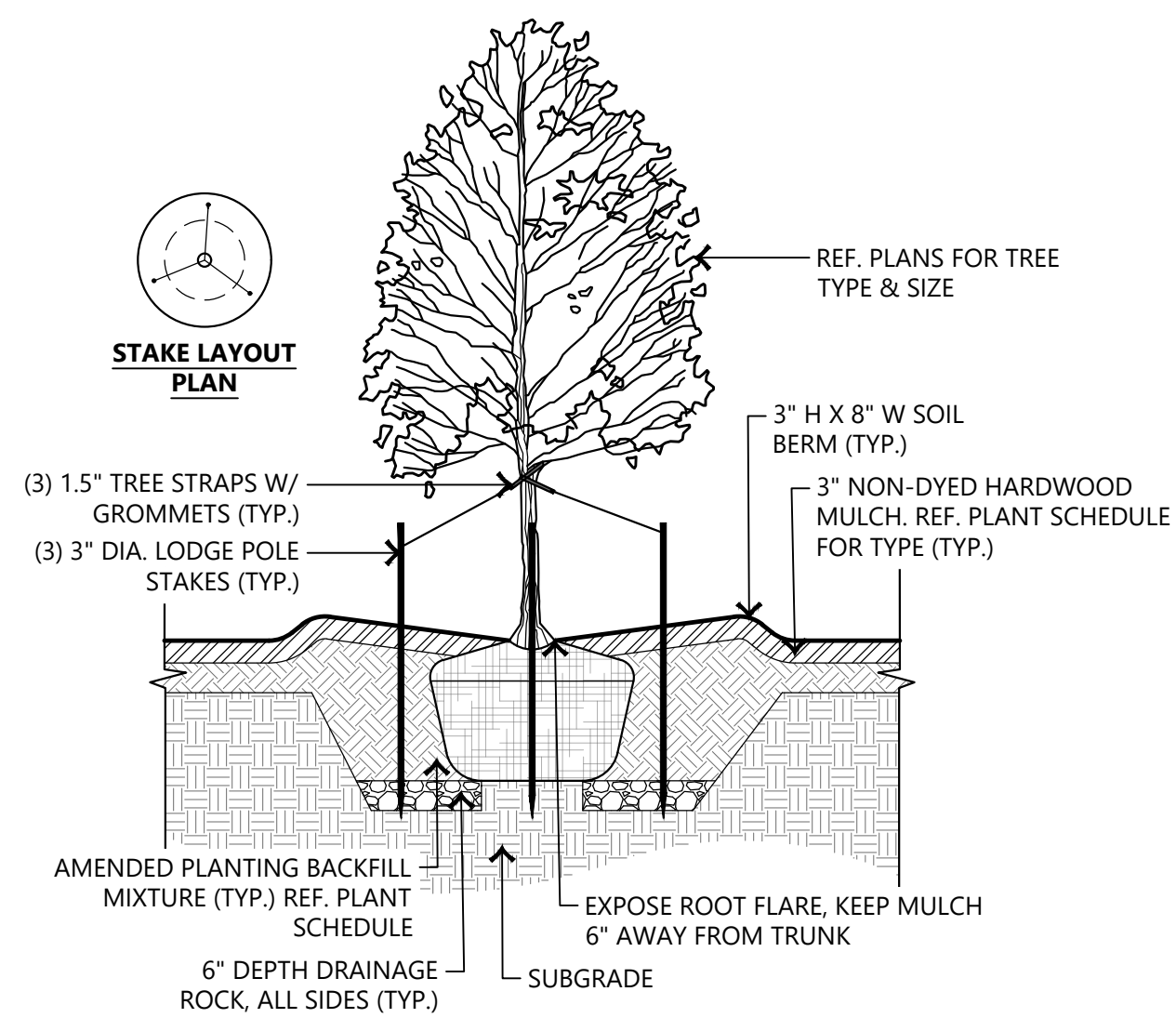
TITLE ELECTRICAL
 DETAILS

SHEET NO. **E1.1**

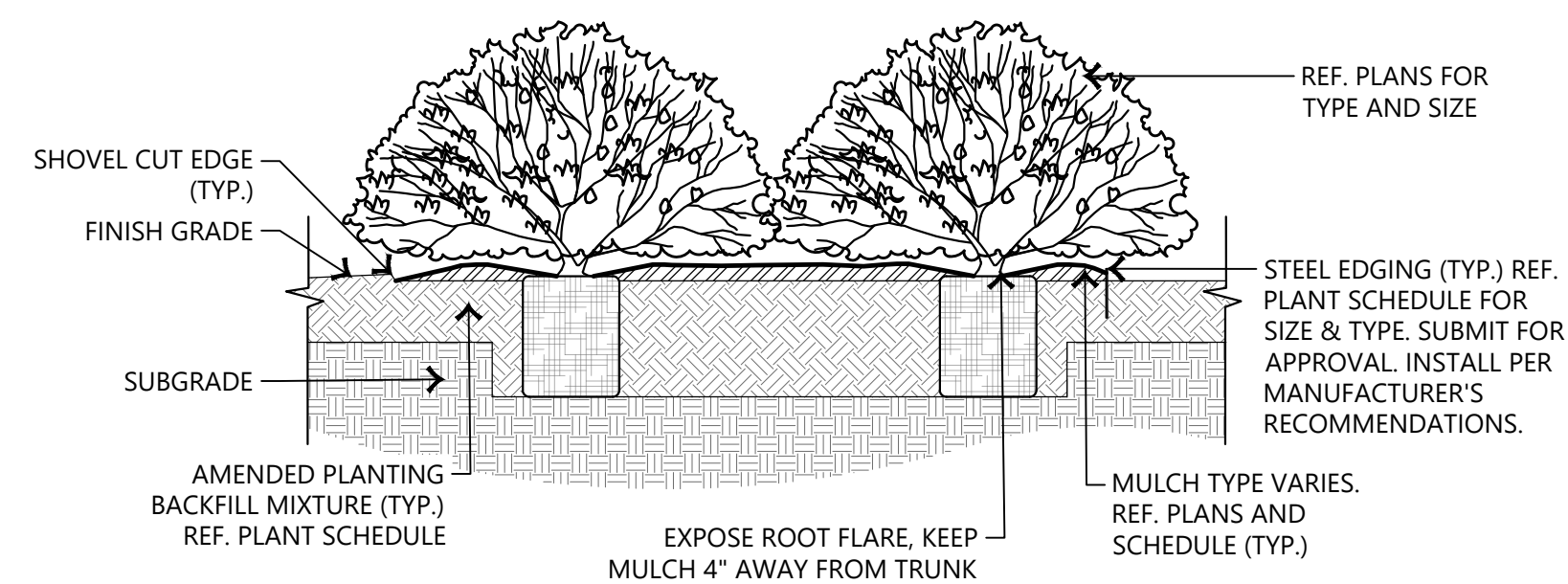
PLANT SCHEDULE							
SYMBOL	QTY	BOTANICAL NAME	COMMON NAME	CALIPER	CONTAINER	SPACING	REMARKS
TREES							
	6	AMELANCHIER ARBOREA	DOWNY SERVICEBERRY	2.5" CAL	30 GAL	AS SHOWN	SINGLE TRUNK. SOURCE FROM HALE & HINES OR APPROVED EQUAL
	3	GLEDITSIA TRIACANTHOS INERMIS 'IMPCOLE'	IMPERIAL® HONEY LOCUST	3" CAL	45 GAL	AS SHOWN	SOURCE FROM HALE & HINES OR APPROVED EQUAL
SHRUBS							
	15	CLETHRA ALNIFOLIA 'HUMMINGBIRD'	HUMMINGBIRD SUMMERSWEET	---	3 GAL	48" O.C.	FULL, MATCHED
	93	ECHINACEA PALLIDA	PALE PURPLE CONEFLOWER	---	1 QT	16" O.C.	FULL, MATCHED
	46	ILEX X 'MAGLAND'	OAKLAND™ HOLLY	---	5 GAL	60" O.C.	FULL, MATCHED
	89	ITEA VIRGINICA 'SPRICH'	LITTLE HENRY® SWEETSPIRE	---	3 GAL	48" O.C.	FULL, MATCHED
	105	POLYSTICHUM ACROSTICHOIDES	CHRISTMAS FERN	---	1 GAL	24" O.C.	FULL, MATCHED
SYMBOL	QTY	BOTANICAL NAME	COMMON NAME	CALIPER	CONTAINER	SPACING	REMARKS
SHRUB AREAS							
	122	CHASMANTHIUM LATIFOLIUM	NORTHERN SEA OATS	---	1 QUART	18" O.C.	FULL, MATCHED
SYMBOL	QTY	BOTANICAL NAME	COMMON NAME	CALIPER	CONTAINER	SPACING	REMARKS
GROUND COVERS							
	5,868 SF	CYNODON DACTYLON '419 HYBRID'	BERMUDAGRASS	---	SOLID SOD, CERTIFIED WEED FREE, PROVIDE 4" TOPSOIL		
MISCELLANEOUS							
QTY	DESCRIPTION						
REF. PLAN	HARDWOOD MULCH	3" DEPTH TRIPLE HAMMERED HARDWOOD MULCH NATIVE COLOR, SUBMIT FOR APPROVAL					
REF. PLAN	PLANTING MIX	8" ALL BEDS, 60% TOPSOIL, 40% ORGANIC COMPOST					
REF. PLAN	RAW STEEL EDGING	3/16" X 4". SUBMIT FOR APPROVAL					
REF. PLAN	2"-4" CROWLEY'S RIDGE DRAINAGE ROCK	6" DEPTH. SUBMIT FOR APPROVAL					



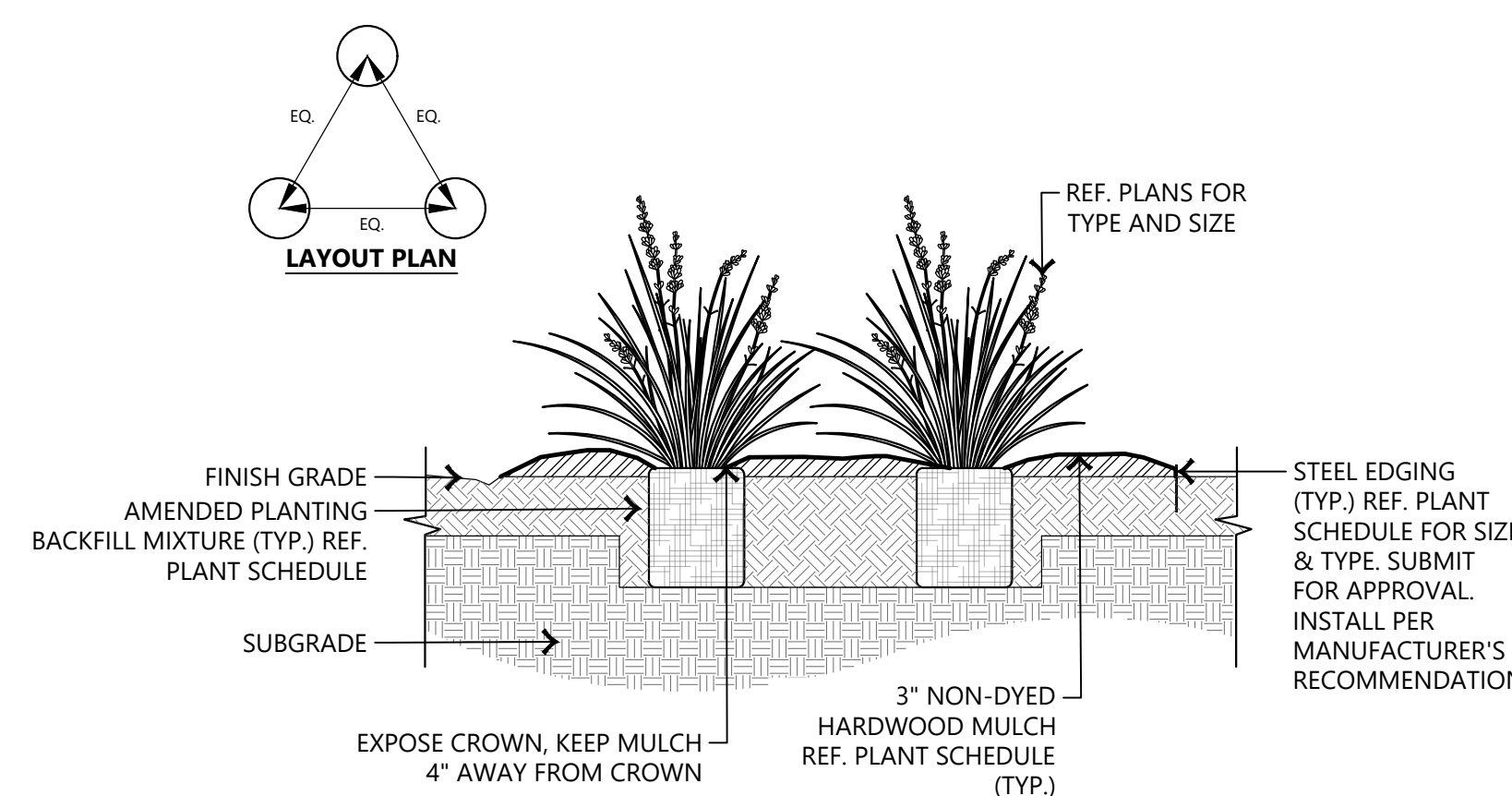
1 TREE PLANTING IN CONCRETE PLAZA SCALE: N.T.S.



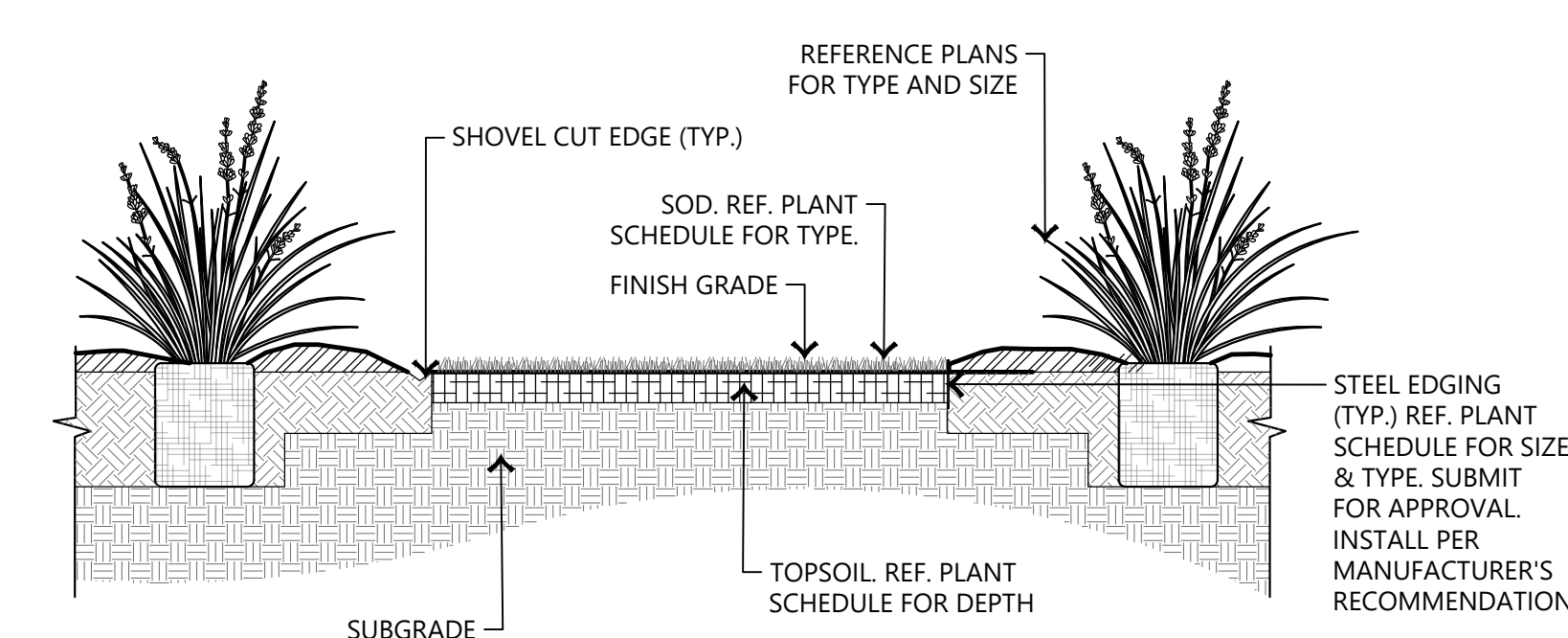
2 TREE PLANTING DETAIL W/ STAKES SCALE: N.T.S.



3 SHRUB PLANTING DETAIL SCALE: N.T.S.



4 NATIVE GRASS PLANTING DETAIL SCALE: N.T.S.



5 SOD PLANTING DETAIL SCALE: N.T.S.

LANDSCAPE NOTES:

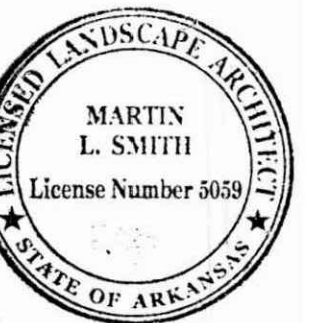
- CONTRACTOR SHALL CONFIRM THE LOCATION OF ALL UTILITIES PRIOR TO STARTING ANY WORK. THE CONTRACTOR IS RESPONSIBLE FOR CONTACTING ARKANSAS ONE-CALL TO CONFIRM ALL UTILITIES. THE CONTRACTOR SHALL AVOID DAMAGE TO ALL UTILITIES DURING THE COURSE OF THE WORK. THE CONTRACTOR IS RESPONSIBLE FOR REPAIRING ANY AND ALL DAMAGE TO UTILITIES, STRUCTURES, SITE APPURTENANCES, ETC. WHICH OCCURS AS A RESULT OF THE LANDSCAPE CONSTRUCTION AT NO COST TO THE OWNER.
- ALL PLANTS MUST BE HEALTHY, VIGOROUS AND FREE OF PESTS AND DISEASE.
- STANDARDS SET FORTH IN "AMERICAN STANDARD FOR NURSERY STOCK" REPRESENT GUIDELINE SPECIFICATIONS ONLY AND SHALL CONSTITUTE MINIMUM QUALITY REQUIREMENTS FOR PLANT MATERIAL.
- ALL PLANTS MUST BE CONTAINER GROWN OR BALLED AND BURLAPPED AS INDICATED ON THE PLANT LIST.
- ALL REQUIRED TREES SHALL MEET MINIMUM REQUIREMENTS PER CITY OF FORREST CITY STANDARDS. ALL TREES MUST BE STRAIGHT TRUNKED AND FULL HEADED, UNLESS SPECIFIED OTHERWISE, AND MUST MEET ALL REQUIREMENTS SPECIFIED ON PLANS.
- MAINTAIN 5' MINIMUM HORIZONTAL SEPARATION BETWEEN TREE PLANTINGS AND UTILITY LINES.
- ALL PLANTS ARE SUBJECT TO THE APPROVAL OF THE LANDSCAPE ARCHITECT BEFORE, DURING, AND AFTER CONSTRUCTION. NOTIFY LANDSCAPE ARCHITECT OR DESIGNATED REPRESENTATIVE OF ANY LAYOUT DISCREPANCIES PRIOR TO ANY PLANTING.
- ALL PLANTING AREAS MUST BE COMPLETELY MULCHED WITH A 3" LAYER OF NON-DYED ORGANIC HARDWOOD MULCH UNLESS OTHERWISE NOTED. MULCH SHALL BE NOT BE PLACED IMMEDIATELY ADJACENT TO TREE TRUNKS, BUT SHALL BE KEPT AT LEAST 6" FROM ROOT COLLAR AT THE SOIL LINE.
- ALL PROPOSED PLANTING AREAS COVERED BY GRASS SHALL HAVE THE SOD COMPLETELY REMOVED BEFORE PLANTING BEGINS.
- ALL AREAS TO BE SEEDED SHALL RECEIVE 3" OF TOPSOIL AND BE GRADED PER THE GRADING PLAN.
- ALL PLANTING BEDS SHALL BE CONTAINED BY EDGING MATERIAL OTHER THAN VEGETATION. REFER TO PLANT SCHEDULE FOR TYPES. SUBMIT FOR APPROVAL.
- THE CONTRACTOR IS RESPONSIBLE FOR VERIFYING ALL QUANTITIES SHOWN ON THESE PLANS BEFORE PRICING THE WORK.
- THE CONTRACTOR IS RESPONSIBLE FOR FULLY MAINTAINING ALL PLANTING MATERIAL (INCLUDING BUT NOT LIMITED TO: WATERING, SPRAYING, MULCHING, FERTILIZING, ETC.) IN ALL PLANTING AREAS AND LAWN AREAS UNTIL THE WORK IS ACCEPTED IN TOTAL BY THE OWNER.
- THE CONTRACTOR SHALL COMPLETELY GUARANTEE ALL PLANT MATERIAL FOR A PERIOD OF TWO (2) YEARS BEGINNING ON THE DATE OF TOTAL ACCEPTANCE. THE CONTRACTOR SHALL PROMPTLY MAKE ALL REPLACEMENTS BEFORE OR AT THE END OF THE GUARANTEE PERIOD. PRESERVED TREES FOR WHICH CREDIT WAS AWARDED BUT WHICH SUBSEQUENTLY DIE, SHALL BE REPLACED BY THE REQUISITE NUMBER OF LIVING TREES. ANY PLANT MATERIAL WHICH DIES, TURNS BROWN, OR DEFOLIATES (PRIOR TO TOTAL ACCEPTANCE OF THE WORK) SHALL BE PROMPTLY REMOVED FROM THE SITE AND REPLACED WITH MATERIAL OF THE SAME SPECIES, QUANTITY, AND SIZE AND MEETING ALL PLANT LIST SPECIFICATIONS.

IRRIGATION GENERAL NOTES:

- THE IRRIGATION CONTRACTOR SHALL PROVIDE A FULLY OPERATIONAL CONVENTIONAL IRRIGATION SYSTEM. THE IRRIGATION CONTRACTOR SHALL PROVIDE SHOP DRAWINGS FOR REVIEW AND APPROVAL. ALL PLANTING AREAS SHALL RECEIVE DRIP IRRIGATION. TREES SHALL RECEIVE BUBBLERS, AND SOD AREAS SHALL RECEIVE TURF / POP SPRAY HEADS. 100% HEAD TO HEAD COVERAGE SHALL BE ACHIEVED.
- BIO-RETENTION AREAS, PLANTING BEDS, SOD AREAS, SHALL BE ZONED SEPARATELY.
- IRRIGATION CONTRACTOR SHALL INSTALL ALL EQUIPMENT AS PER MANUFACTURER'S CURRENT SPECIFICATIONS AND RECOMMENDATIONS.
- CONTRACTOR SHALL CAREFULLY VERIFY A MINIMUM RESIDUAL WATER PRESSURE OF 70 PSI @ 60 GPM. CONTRACTOR SHALL NOTIFY THE OWNER IF WATER PRESSURE IS LESS THAN NOTED.
- WHEN TRENCHING UNDER THE DRIPLINE OF EXISTING TREES EXTREME CARE MUST BE GIVEN TO AVOID ROOT DAMAGE. IF AT ALL POSSIBLE AVOID TRENCHING INSIDE THE DRIPLINE BY GOING AROUND THE TREE RATHER THAN UNDER IT. INSTALL PIPING AND SPRINKLERS ON THE INSIDE OF NEW CURBLINES IF POSSIBLE. IF TRENCHING MUST OCCUR UNDER THE DRIPLINE, USE EITHER TUNNELING OR HAND-DIGGING METHODS RATHER THAN A MECHANICAL TRENCHER. MINIMIZE THE IMPACT OF ROOT SEVERING BY AVOIDING CONSTRUCTION DURING HOT, DRY WEATHER, KEEPING TREES WELL WATERED BEFORE AND AFTER DIGGING AND COVERING ROOTS WITH SOIL OR MUCH AS SOON AS POSSIBLE.
- CONTRACTOR SHALL BE RESPONSIBLE FOR DAMAGES CAUSED TO ALL UTILITIES (BOTH OVERHEAD AND BELOWGROUND) DURING THE IRRIGATION INSTALLATION. CONTRACTOR SHALL SEEK THE ASSISTANCE AT LOCAL UTILITIES AND THE OWNER IN THE LOCATION OF THE UTILITIES PRIOR TO PERFORMING TRENCHING OPERATIONS IN THE WORKING AREA.
- WINTERIZATION SHALL BE DONE USING A COMBINATION OF MANUAL DRAIN VALVES IN THE LOW POINTS OF THE MAINLINE, AUTOMATIC DRAIN VALVES ON LATERAL LINE SAND WRAPPING BACKFLOW PREVENTER WITH HEAT TAPE INSIDE THE ENCLOSURE.
- ALL PVC MAINLINE SHALL BE PVC SCH40. LATERAL LINES PVC CL200.
- ALL PVC FITTINGS SHALL BE SCH40 PVC TYPE 1 AND MUST BE OF DOMESTIC MANUFACTURE. PVC SOLVENT CEMENT AND PRIMER SHALL BE AS RECOMMENDED / APPROVED BY THE MANUFACTURER OF THE PIPE.
- CONTRACTOR SHALL INSTALL A TRACER WIRE ABOVE ALL MAINLINE PIPING. INSTALL PER MANUFACTURER'S RECOMMENDATIONS.
- INSTALL SPRINKLERS WITH CHECK VALVE FEATURE TO AVOID LOW-HEAD DRAINAGE FROM SPRINKLERS AT LOWER ELEVATIONS. PROGRAM CONTROLLER WITH "CYCLE+SOAK" FEATURE AS REQUIRED TO ALLOW WATER TO INFILTRATE SOIL AND ELIMINATE RUN-OFF.
- CONTRACTOR SHALL INCLUDE IN BASE BID WATER METER, BACKFLOW PREVENTOR / RPZ, CONTROLLER, AND CLIMATE SENSOR. COORDINATE EXACT LOCATIONS OF WATER METER, BACKFLOW PREVENTOR / RPZ, CONTROLLER, AND CLIMATE SENSOR WITH THE LANDSCAPE ARCHITECT AND GENERAL CONTRACTOR.

SLEEVING NOTES:

- THE GENERAL CONTRACTOR SHALL PROVIDE SCH40 PVC SLEEVING, BURIED AT A MINIMUM OF 18" AND MAXIMUM OF 24" DEPTH.
- UPON COMPLETION OF SITE FILLING AND COMPACTION OPERATIONS, AND PRIOR TO THE CONSTRUCTION OF FOUNDATIONS, ROADWAYS, WALKS OR OTHER PAVEMENTS OR OBSTRUCTIONS, THE GENERAL CONTRACTOR SHALL INSTALL SLEEVES IN SUFFICIENT SIZES TO ACCOMMODATE FUTURE IRRIGATION PIPING AND/OR CONTROL WIRING. ENDS OF SLEEVES SHALL EXTEND 18 INCHES PAST THE EDGES OF AL PAVING OR CONSTRUCTION. THE ENDS OF THE SLEEVES SHALL BE CLEARLY MARKED FOR FUTURE USE BY THE IRRIGATION CONTRACTOR.



Know what's below.
Call before you dig.

EGD PROJECT NO. 23-084
DATE 2024.09.20

REVISIONS		
Mark	Date	Description

PHASE 100% CONSTRUCTION DOCUMENTS

TITLE LANDSCAPE NOTES & DETAILS

SHEET NO. L1.10