

ADDENDUM NUMBER 001

DATE: March 7, 2025

PROJECT: Jonesboro Municipal Airport Terminal
OWNER: Jonesboro Municipal Airport Commission
ARCHITECT: Cooper Mixon Architects, PLLC

TO: BIDDERS

This Addendum forms a part of the Contract Documents and modifies the original Procurement Documents dated October 14, 2024, with amendments and additions noted below.

Acknowledge receipt of this Addendum in the space provided in the bid form. Failure to do so may disqualify the bidder.

This Addendum consists of the following documents and revisions:

**CHANGES TO THE PROJECT MANUAL – INTRODUCTORY REQUIREMENTS,
PROCUREMENT REQUIREMENTS AND CONTRACTING REQUIREMENTS:**

1. Replace Section 00 01 10 – Table of Contents with revised Section issued with this Addendum.
2. Insert (this) Section 00 91 11 – Addendum Number 001 issued with this Addendum.

CHANGES TO THE DRAWINGS:

1. Insert the following attached revised Drawings and new drawings issued with this Addendum:

Sheet Title/Description

ARCHITECTURAL

A-121 REFLECTED CEILING PLAN
A-142 FINISHED FLOOR PLAN – EPOXY TERRAZZO

PRE-BID RFI'S:

#	Status	Title	Question	Official response
---	--------	-------	----------	-------------------

PB RFI 1	Answered	Wood Ceilings	For clarity, will the 2300 ceiling be used in the conference room? I ask because the RCP has the conference room tagged as WD-1 (2300 Continuous Linear), but the finish schedule notes that the ceiling in the conference room should be WD-2 (2400 Tongue and Groove System)	Finish Schedule is correct. Conference room receives WD-2. Refer to drawing revised in Addendum 001.
PB RFI 2	Answered	Suspension and Debarment Name Change	Is it ok to scratch through the City of Brookland and write in Jonesboro Airport on the attached (2) forms?	No. Please use the revised Suspension and Debarment document issued in Addendum 001.
PB RFI 3	Answered	Builder's Risk	Is Airport providing Builder's Risk?	Contractor is responsible for Builder's Risk. See 005200 – Agreement Form – AIA Exhibit A - A.3.3.2.1.
PB RFI 4	Answered	Concrete Paving	Concrete paving : is area at apron to be considered aircraft parking? 12" vs 6"	The concrete apron on the runway side of the building is for aircraft (12"). The concrete to the baggage area is vehicular (6").
PB RFI 5	VOID			

PB RFI 6	Not Answered	Exterior Signage	<p>The exterior letters are cast letters, but I am wondering if we could substitute for flat cut metal sense there is two needing bottom rail mounts.</p> <p>I also would like a little more clarification on how they want the logo mounted exactly I could not find a side detail on it</p>	Will be answered in a future addendum.
PB RFI 7	Answered	Masonry Units	<p>On the Airport Terminal Project, the masonry units called out on the plans are 16 inch by 32 inch, and the masonry units called out in the specifications is 16 inch by 24 inch, can you please confirm.</p>	Refer to the drawings for the size of the units. Units are to be 16" x 32".
PB RFI 8	Answered	Flooring	<p>Why are there two specification sections - one for Resinous Flooring and one for Epoxy Terrazzo? How do you transition between these materials at the kitchen?</p>	<p>These are two different products. Resinous Flooring is used in all the kitchen spaces. The epoxy terrazzo is use throughout the concourse and in all areas noted on the finish schedule and on A-142. See the revised sheet issued in Addendum 001 for clarification.</p>

This page intentionally left blank

**SECTION 00 01 10
TABLE OF CONTENTS**

PROCUREMENT AND CONTRACTING REQUIREMENTS

DIVISION 00 -- PROCUREMENT AND CONTRACTING REQUIREMENTS

- 00 01 05 - Certifications Page
- 00 01 10 - Table of Contents
- 00 01 15 - List of Drawing Sheets
- 00 11 13 - Advertisement for Bids
- 00 21 13 - Instructions to Bidders
- 00 31 00 - Available Project Information
- 00 41 00 - Bid Form
- 00 50 00 - Contracting Forms and Supplements
- 00 52 00 - Agreement Form
- 00 72 00 - General Conditions
- 00 73 00 - Supplementary Conditions
- 00 91 11 - ADDENDUM 001

SPECIFICATIONS

DIVISION 01 -- GENERAL REQUIREMENTS

- 01 10 00 - Summary
- 01 20 00 - Price and Payment Procedures
- 01 21 00 - Allowances
- 01 22 00 - Unit Prices
- 01 23 00 - Deductive Alternates
- 01 25 00 - Substitution Procedures
- 01 30 00 - Administrative Requirements
- 01 32 16 - Construction Progress Schedule
- 01 40 00 - Quality Requirements
- 01 42 16 - Definitions
- 01 45 33 - Code-Required Special Inspections
- 01 50 00 - Temporary Facilities and Controls
- 01 51 00 - Temporary Utilities
- 01 52 00 - Site Safety Plan
- 01 57 23 - Temporary Storm Water Pollution Control
- 01 58 13 - Temporary Project Signage
- 01 60 00 - Product Requirements
- 01 61 16 - Volatile Organic Compound (VOC) Content Restrictions

- 01 70 00 - Execution and Closeout Requirements
- 01 74 19 - Construction Waste Management and Disposal
- 01 78 00 - Closeout Submittals
- 01 79 00 - Demonstration and Training

DIVISION 02 -- EXISTING CONDITIONS

- For Site Preparation and Earthwork, see Division 31
- For Pile and Other Foundations, see Division 31
- For Pavements and Site Improvements, see Division 32
- For Site Utilities, see Division 33
- 02 41 16 - Structure Demolition

DIVISION 03 -- CONCRETE

- 03 10 00 - Concrete Forming and Accessories
- 03 32 00 - Concrete Reinforcing
- 03 30 00 - Cast-in-Place Concrete
- 03 45 00 - Precast Architectural Concrete

DIVISION 04 -- MASONRY

- 04 20 00 - Unit Masonry

DIVISION 05 -- METALS

- 05 31 00 - Steel Decking
- 05 40 00 - Cold-Formed Metal Framing
- 05 50 00 - Metal Fabrications
- 05 52 13 - Pipe and Tube Railings

DIVISION 06 -- WOOD, PLASTICS, AND COMPOSITES

- 06 10 00 - Rough Carpentry
- 06 41 00 - Architectural Wood Casework
- 06 83 16 - Fiberglass Reinforced Paneling

DIVISION 07 -- THERMAL AND MOISTURE PROTECTION

- 07 11 13 - Bituminous Dampproofing
- 07 19 00 - Water Repellents
- 07 21 00 - Thermal Insulation
- 07 21 10 - Polyisocyanurate Continuous Wall Insulation
- 07 41 13 - Metal Roof Panels
- 07 42 13 - Metal Soffit Panels
- 07 42 13.23 - Metal Composite Material Wall Panels
- 07 62 00 - Sheet Metal Flashing and Trim
- 07 72 52 - Roof Snow Guards

07 92 00 - Joint Sealants

DIVISION 08 -- OPENINGS

08 11 13 - Hollow Metal Doors and Frames

08 14 16 - Flush Wood Doors

08 31 00 - Access Doors and Panels

08 33 13 - Coiling Counter Doors

08 33 23 - Overhead Coiling Doors

08 34 90 - Tornado-Resistant Assemblies

08 42 29 - Automatic Entrances

08 43 13 - Aluminum-Framed Storefronts

08 44 13 - Glazed Aluminum Curtain Walls

08 71 00 - Door Hardware

08 80 00 - Glazing

DIVISION 09 -- FINISHES

09 05 61 - Common Work Results for Flooring Preparation

09 21 16 - Gypsum Board Assemblies

09 30 00 - Tiling

09 51 00 - Acoustical Ceilings

09 54 26 - Linear Wood Ceilings

09 66 23.16 - Epoxy Terrazzo

09 67 00 - Fluid-Applied Flooring

09 68 13 - Tile Carpeting

09 90 00 - Painting and Coating

DIVISION 10 -- SPECIALTIES

10 14 00 - Signage

10 21 00 - Phenolic Toilet Compartments

10 26 00 - Wall and Door Protection

10 28 00 - Toilet, Bath, and Laundry Accessories

10 43 00 - Emergency Aid Specialties

10 44 00 - Fire Protection Specialties

10 73 00 - Aluminum Walkway Covers

10 73 16.13 - Metal Canopies

DIVISION 11 -- EQUIPMENT

11 40 00 - Kitchen Equipment

DIVISION 12 -- FURNISHINGS

12 25 13 - Roller Window Shades

12 36 00 - Countertops

12 50 00 - Furniture

DIVISION 13 -- SPECIAL CONSTRUCTION

13 34 16 - Metal Building Systems

DIVISION 14 -- CONVEYING EQUIPMENT

DIVISION 21 -- FIRE SUPPRESSION

21 05 00 - Common Work Results for Fire Suppression

21 05 23 - General-Duty Valves for Water-Based Fire-Suppression Piping

21 05 48 - Vibration and Seismic Controls for Fire Suppression Piping and Equipment

21 05 53 - Identification for Fire Suppression Piping and Equipment

21 11 00 - Facility Fire-Suppression Water-Service Piping

21 13 00 - Fire-Suppression Sprinkler Systems

DIVISION 22 -- PLUMBING

22 00 00 - Supplementary Plumbing General Conditions

22 05 17 - Sleeves and Sleeve Seals for Plumbing Piping

22 05 48 - Vibration and Seismic Controls for Plumbing Piping and Equipment

22 05 53 - Identification for Plumbing Piping and Equipment

22 07 19 - Plumbing Piping Insulation

22 10 05 - Plumbing Piping

22 10 06 - Plumbing Piping Specialties

22 30 00 - Plumbing Equipment

22 40 00 - Plumbing Fixtures

DIVISION 23 -- HEATING, VENTILATING, AND AIR-CONDITIONING (HVAC)

23 00 00 - Supplementary Plumbing General Conditions

23 05 13 - Common Motor Requirements for HVAC Equipment

23 05 17 - Sleeves and Sleeve Seals for HVAC Piping

23 05 29 - Hangers and Supports for HVAC Piping and Equipment

23 05 48 - Vibration and Seismic Controls for HVAC

23 05 53 - Identification for HVAC Piping and Equipment

23 05 93 - Testing, Adjusting, and Balancing for HVAC

23 07 13 - Duct Insulation

23 07 19 - HVAC Piping Insulation

23 23 00 - Refrigerant Piping

23 31 00 - HVAC Ducts and Casings

23 33 00 - Air Duct Accessories

23 34 23 - HVAC Power Ventilators

- 23 37 00 - Air Outlets and Inlets
- 23 38 13 - Commercial-Kitchen Hoods
- 23 81 26.13 - Small-Capacity Split-System Air Conditioners
- 23 82 00 - Convection Heating and Cooling Units

DIVISION 25 -- INTEGRATED AUTOMATION

DIVISION 26 -- ELECTRICAL

- 26 00 00 - Supplementary Electrical General Conditions
- 26 05 19 - Low-Voltage Electrical Power Conductors and Cables
- 26 05 26 - Grounding and Bonding for Electrical Systems
- 26 05 29 - Hangers and Supports for Electrical Systems
- 26 05 33.13 - Conduit for Electrical Systems
- 26 05 33.16 - Boxes for Electrical Systems
- 26 05 48 - Vibration and Seismic Controls for Electrical Systems
- 26 05 53 - Identification for Electrical Systems
- 26 05 83 - Wiring Connections
- 26 09 23 - Lighting Control Devices
- 26 22 00 - Low-Voltage Transformers
- 26 24 13 - Switchboards
- 26 24 16 - Panelboards
- 26 27 26 - Wiring Devices
- 26 41 13 - Lightning Protection for Structures
- 26 51 00 - Interior Lighting
- 26 56 00 - Exterior Lighting

DIVISION 27 -- COMMUNICATIONS

- 27 10 00 - Structured Cabling

DIVISION 28 -- ELECTRONIC SAFETY AND SECURITY

DIVISION 31 -- EARTHWORK

- 31 10 00 - Site Clearing
- 31 20 00 - Earth Moving
- 31 31 16 - Termite Control
- 31 50 00 - Excavation Support and Protection

DIVISION 32 -- EXTERIOR IMPROVEMENTS

- 32 12 16 - Asphalt Paving
- 32 13 13 - Concrete Paving
- 31 13 73 - Concrete Paving Joint Sealant
- 32 31 19 - Decorative Metal Fences and Gates

32 84 00 - Planting Irrigation

32 92 00 - Turf and Grasses

DIVISION 33 -- UTILITIES

33 05 00 - Common Work Results for Utilities

33 14 15 - Site Water Distribution Piping

33 42 00 - Stormwater Conveyance

END OF SECTION

Suspension and Debarment

This contract with the **City of Jonesboro** is a covered transaction for purposes of 49 CFR Part 29. As such, the contractor is required to verify that none of the contractor, its principals, as defined at 49 CFR 29.995, or affiliates, as defined at 49 CFR 29.905, are excluded or disqualified as defined at 49 CFR 29.940 and 29.945.

The contractor is required to comply with 49 CFR 29, Subpart C and must include the requirement to comply with 49 CFR 29, Subpart C in any lower tier covered transaction it enters into.

By signing and submitting its bid or proposal, the bidder or proposer certifies as follows:

The certification in this clause is a material representation of fact relied upon by **the City of Jonesboro**. If it is later determined that the bidder or proposer knowingly rendered an erroneous certification, in addition to remedies available to **the City of Jonesboro**, the Federal Government may pursue available remedies, including but not limited to suspension andfor debarment. The bidder or proposer agrees to comply with the requirements of 49 CFR 29, Subpart C while this offer is valid and throughout the period of any contract that may arise from this offer. The bidder or proposer further agrees to include a provision requiring such compliance in its lower tier covered transactions.

(Name of BidderfProposer)

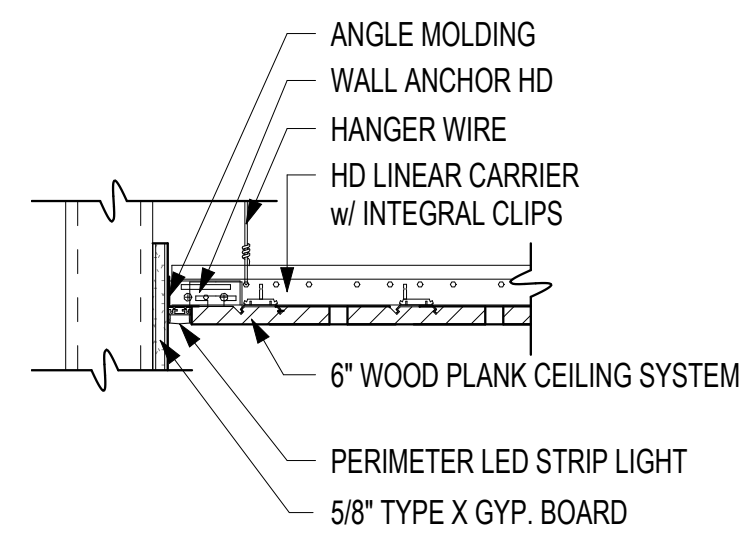
(Printed Name of Bidder’s Agent)

(Signature of Bidder’s Agent)

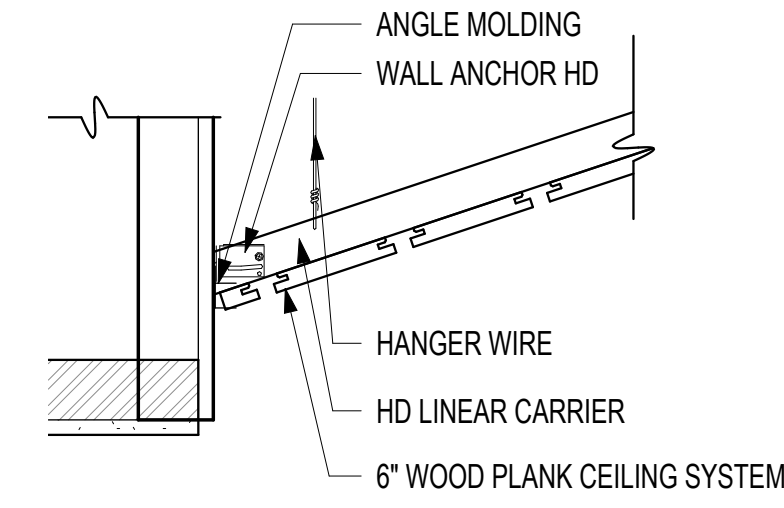
(Printed Title of Bidder’s Agent)

(Date Executed)

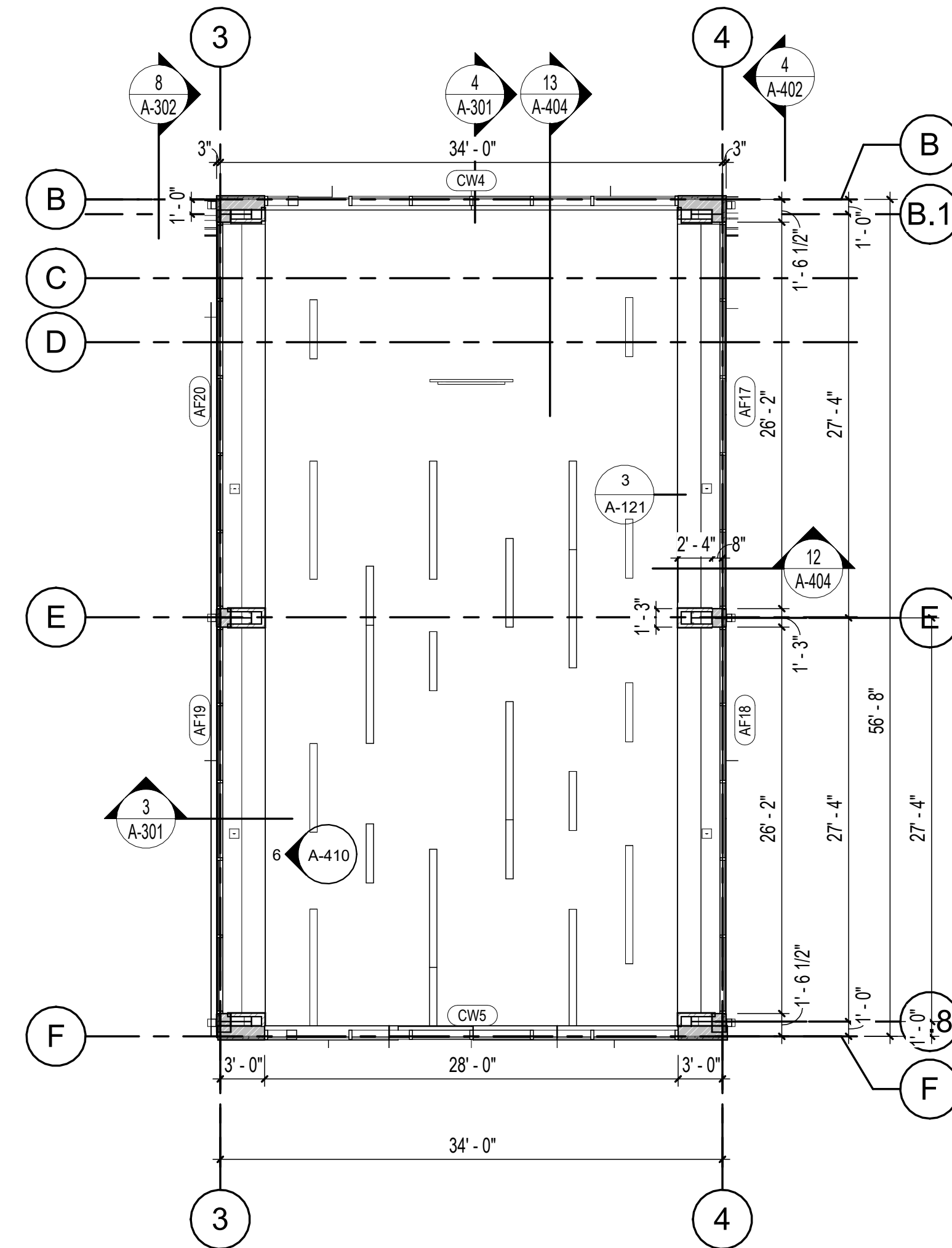
This page intentionally left blank



2 PERIMETER LED AT WOOD CEILING
1 1/2\"/>



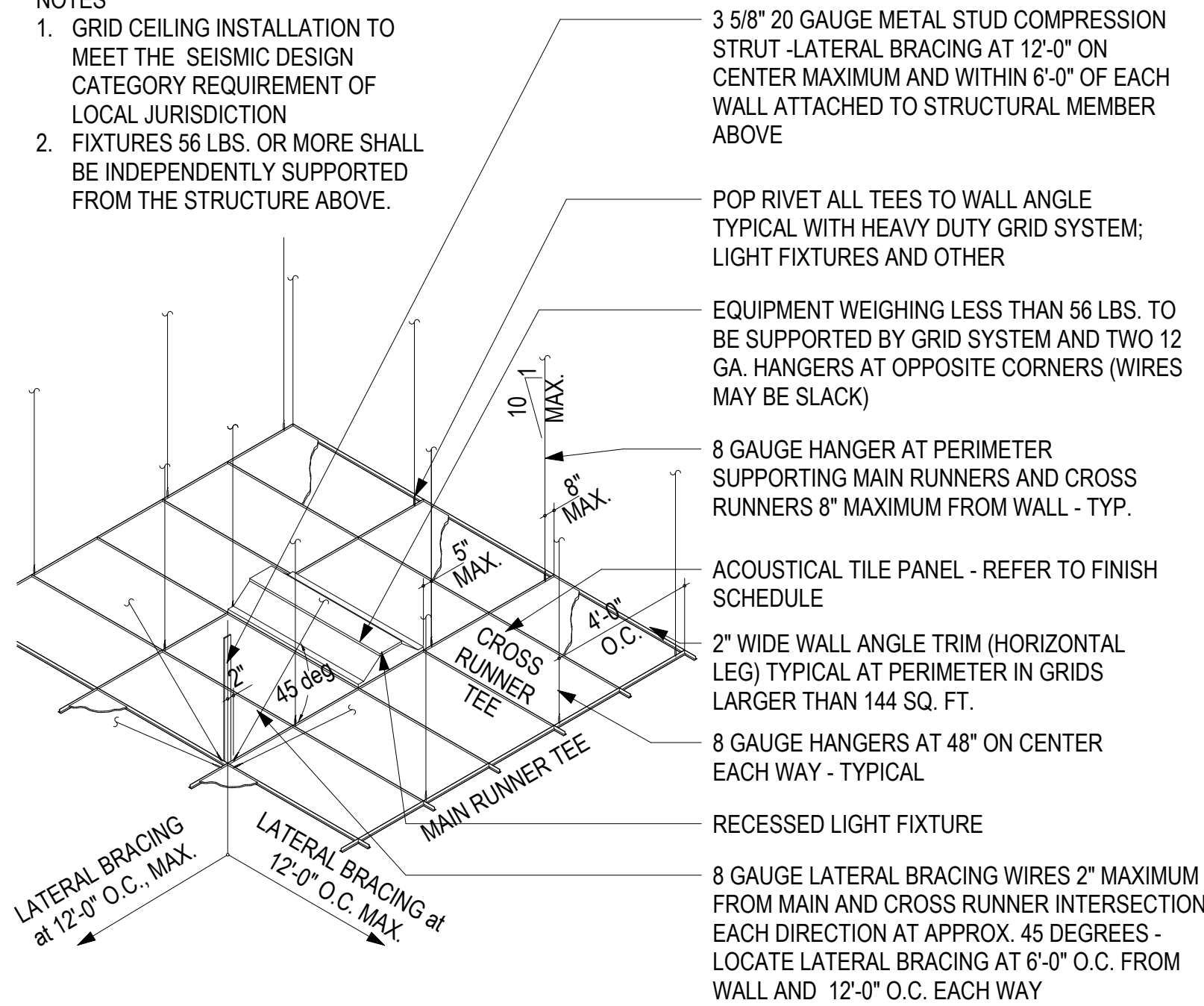
3 DETAIL AT SLOPED WOOD CEILING
1 1/2\"/>



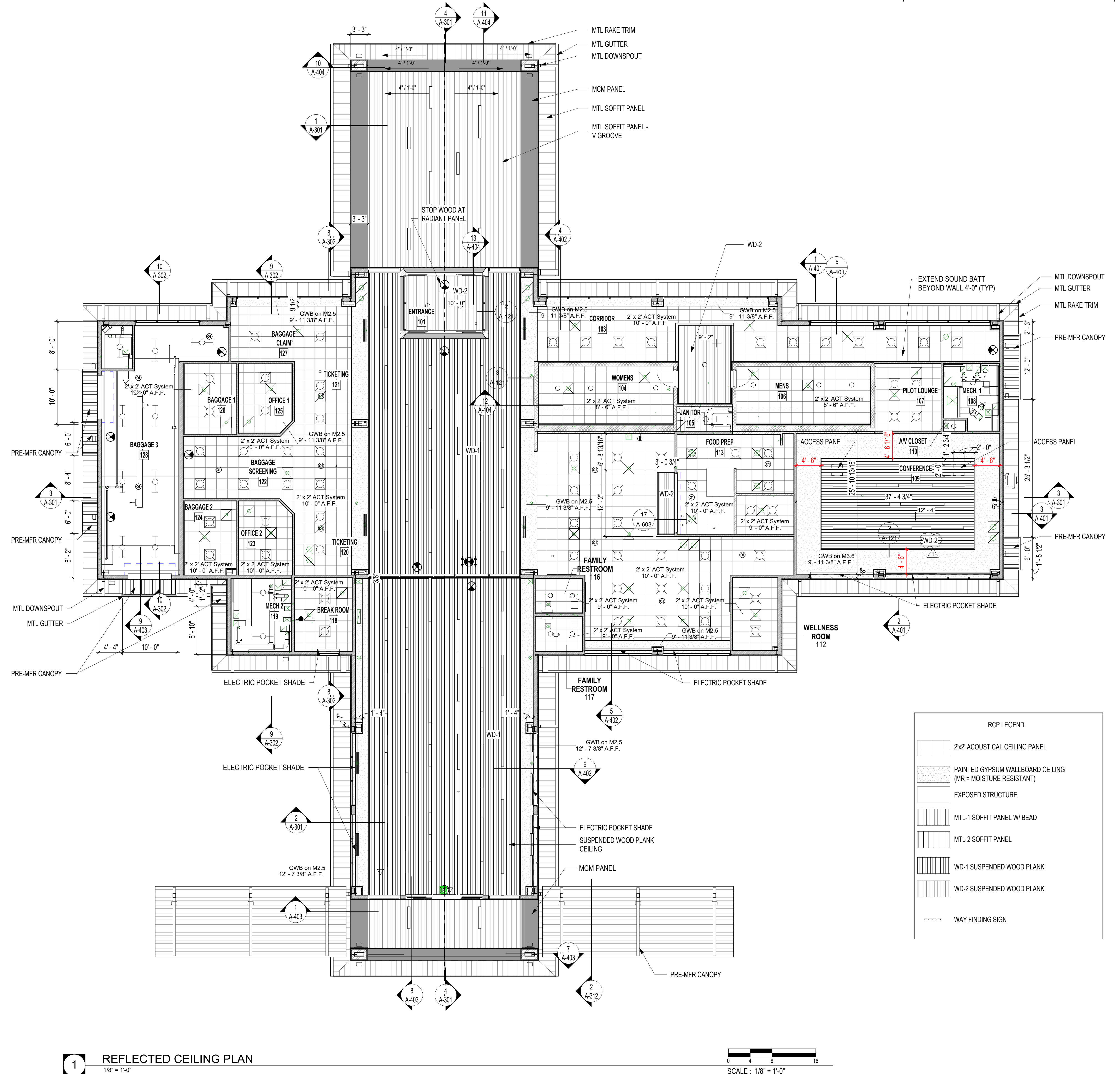
4 UPPER WINDOWS
1/8\"/>

NOTES

- GRID CEILING INSTALLATION TO MEET THE SEISMIC DESIGN CATEGORY REQUIREMENT OF LOCAL JURISDICTION
- FIXTURES 56 LBS. OR MORE SHALL BE INDEPENDENTLY SUPPORTED FROM THE STRUCTURE ABOVE.



5 SUSPENDED CEILING TILE
1 1/2\"/>

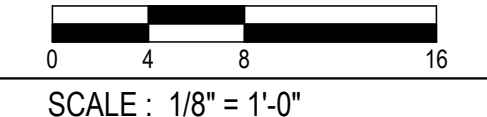


1 REFLECTED CEILING PLAN
1/8\"/>

- RCP - NOTES**
- ALL ELEVATIONS ARE ABOVE FINISHED FLOOR.
 - REFER TO ELECTRICAL DRAWINGS FOR POWER AND LIGHTING INFORMATION
 - REFER TO MECHANICAL DRAWINGS FOR VENTILATION AND HEATING VENTILATION AND AIR CONDITIONING INFORMATION
 - ALL CEILING GRIDS TO BE CENTERED IN ROOMS - TYPICAL UNLESS NOTED OR DIMENSIONED OTHERWISE
 - LIGHT FIXTURES IN GWB CEILINGS SHALL BE CENTERED IN ROOMS - REF. ELECTRICAL DRAWINGS FOR LOCATION.
 - ALL EXPOSED DUCTWORK, PIPES, CONDUIT AND STRUCTURE SHALL BE CLEAN AND FREE OF ANY MANUFACTURER OR CONSTRUCTION DEFECTS
 - THE SUSPENDED CEILING SYSTEM, MECHANICAL DUCTWORK AND LIGHTING FIXTURES SHALL BE POSITIVELY ATTACHED TO THE STRUCTURE ABOVE / SEISMIC RESTRAINTS

RCP LEGEND

[Pattern]	2x2 ACoustical CEILING PANEL
[Pattern]	PAINTED GYPSUM WALLBOARD CEILING (MR - MOISTURE RESISTANT)
[Pattern]	EXPOSED STRUCTURE
[Pattern]	MTL-1 SOFFIT PANEL W/ BEAD
[Pattern]	MTL-2 SOFFIT PANEL
[Pattern]	WD-1 SUSPENDED WOOD PLANK
[Pattern]	WD-2 SUSPENDED WOOD PLANK
[Symbol]	WAY FINDING SIGN



COOPER MIXON
555 Union Street, 2nd Fl. Jonesboro, AR 72401
Phone 870.336.6536 www.coopermixon.com

Michael Baker INTERNATIONAL
101 SOUTH SPRING STREET
SUITE 100
LITTLE ROCK, AR 72201

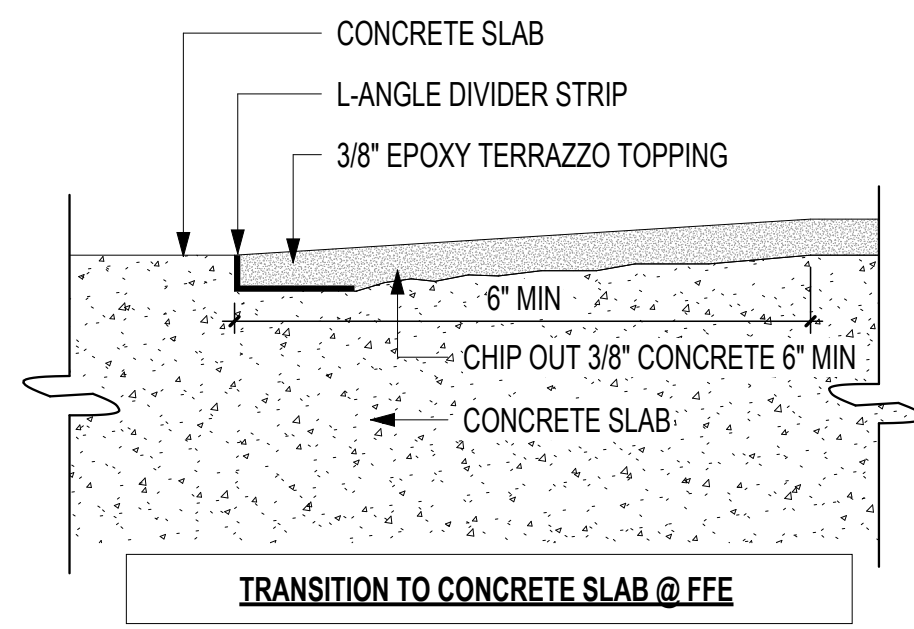
**JONESBORO MUNICIPAL AIRPORT
TERMINAL REPLACEMENT**
3927 LINDBERGH DRIVE
JONESBORO, AR 72401

REGISTERED ARCHITECT
LL237
10/14/2024

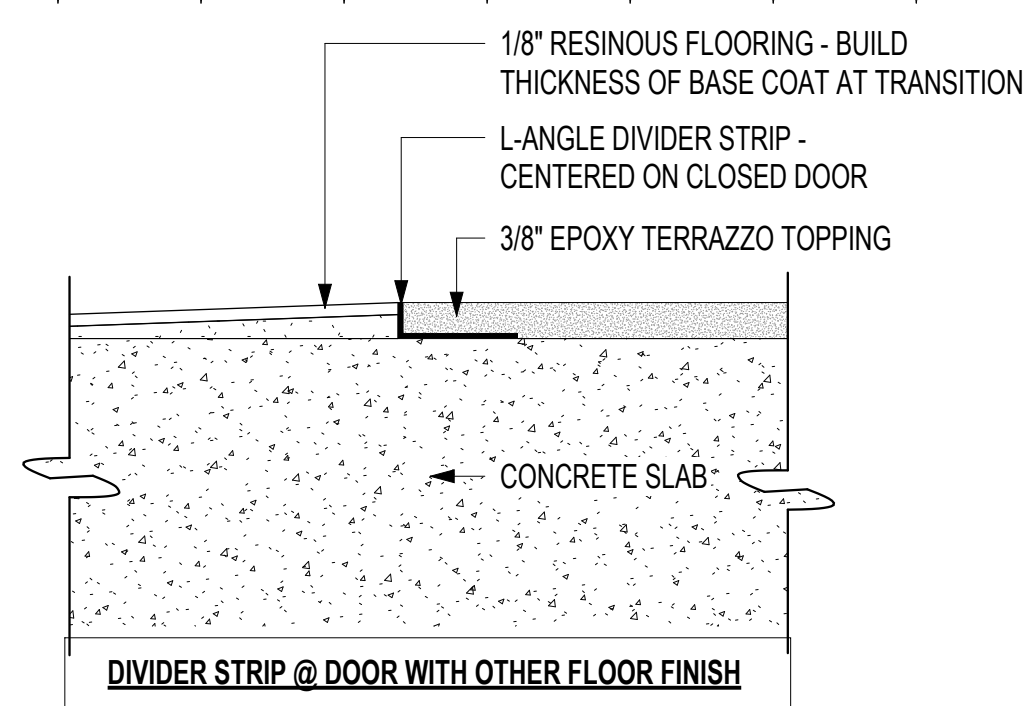
CONSTRUCTION DOCUMENTS

PROJECT NO. 2226
PROJECT NAME TERMINAL REPLACEMENT
DATE 10/14/2024
CONTENTS REFLECTED CEILING PLAN
SHEET NUMBER **A-121**

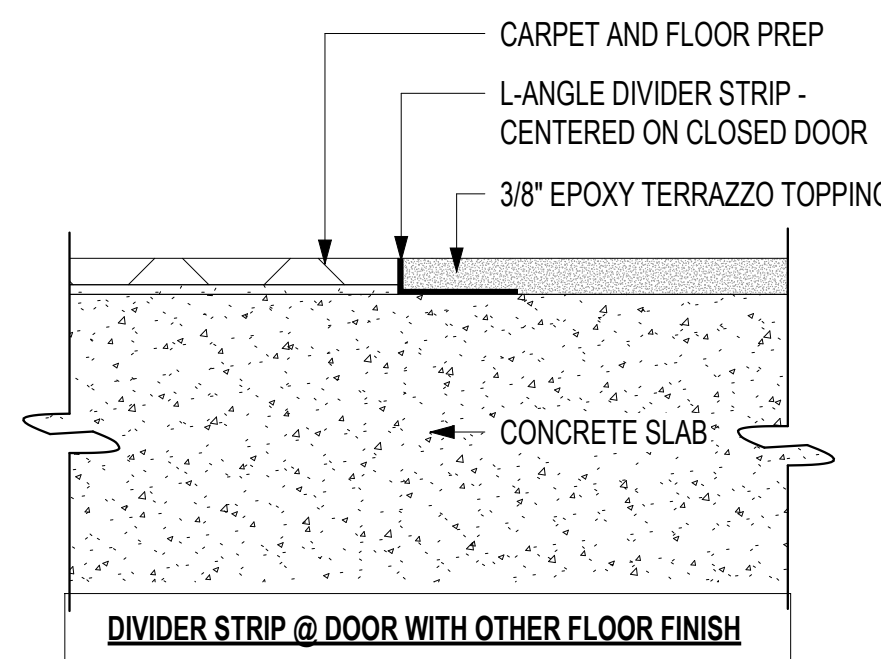
1 03/07/2025 ADDENDUM 001



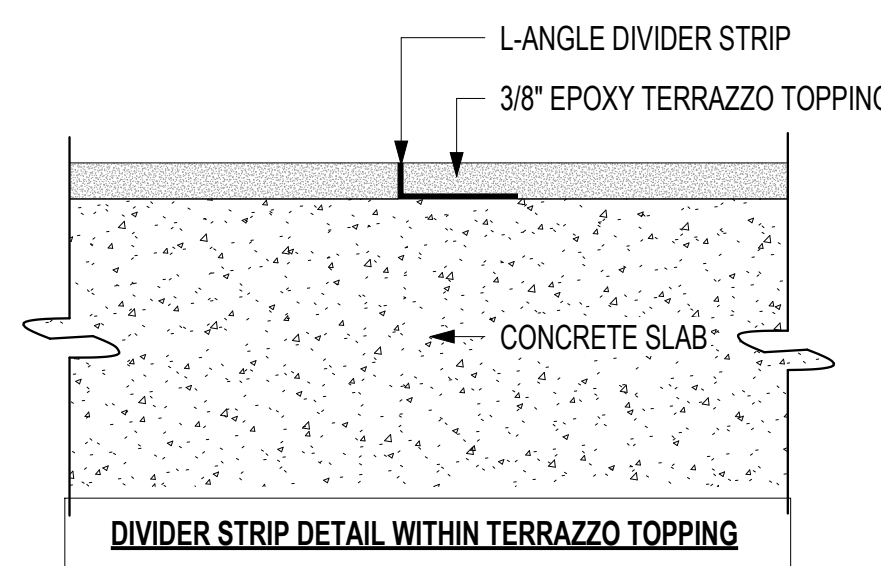
T TRANSITION TO CONCRETE - E-T
6" = 1'-0"



9 GUIDE DETAIL - E-9
6" = 1'-0"

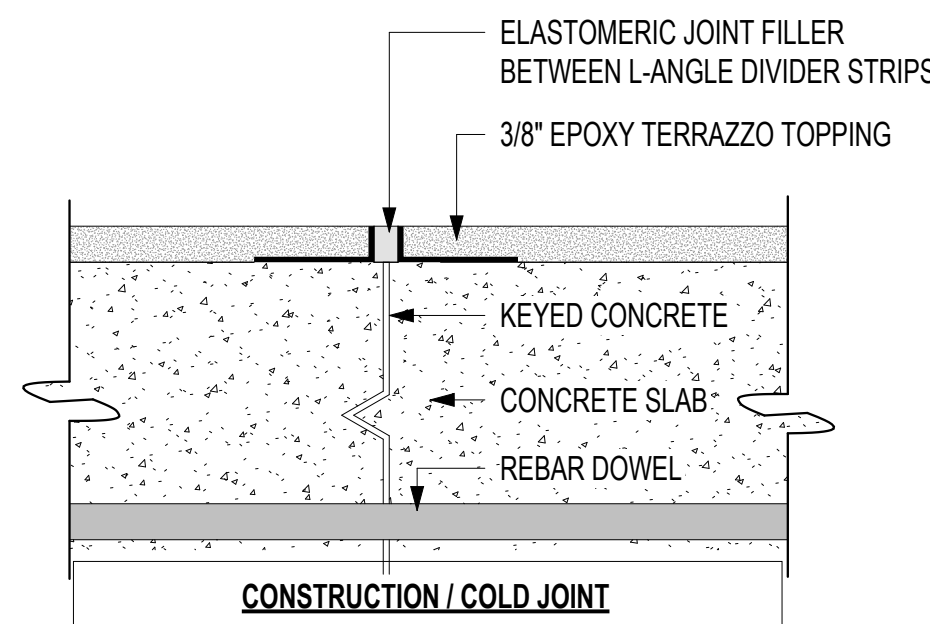


8 GUIDE DETAIL - E-8
6" = 1'-0"



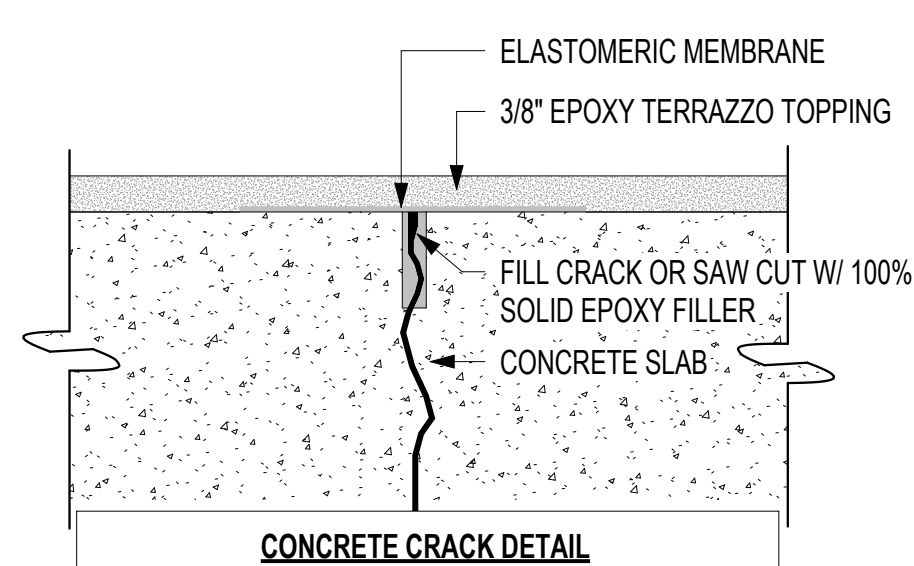
NOTES:
- A DIVIDER STRIP USED AS TERMINATION TO SEPARATE COLORS OR AS AESTHETIC FEATURE

7 GUIDE DETAIL - E-7
6" = 1'-0"



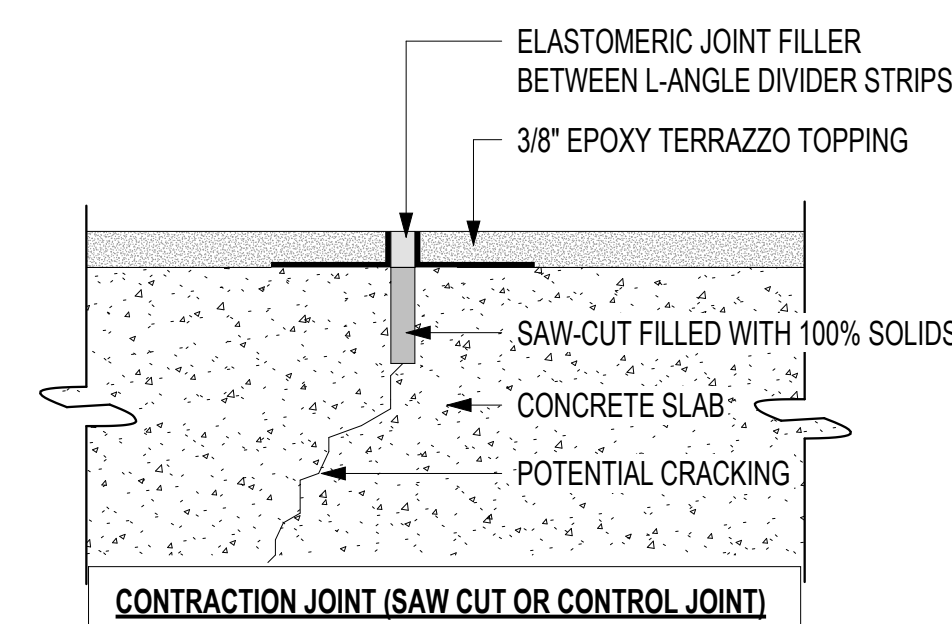
NOTES:
- USE AT CONSTRUCTION / COLD JOINTS WITH EITHER KEYED CONCRETE OR REBAR DOWELS.

6 GUIDE DETAIL - E-6
6" = 1'-0"



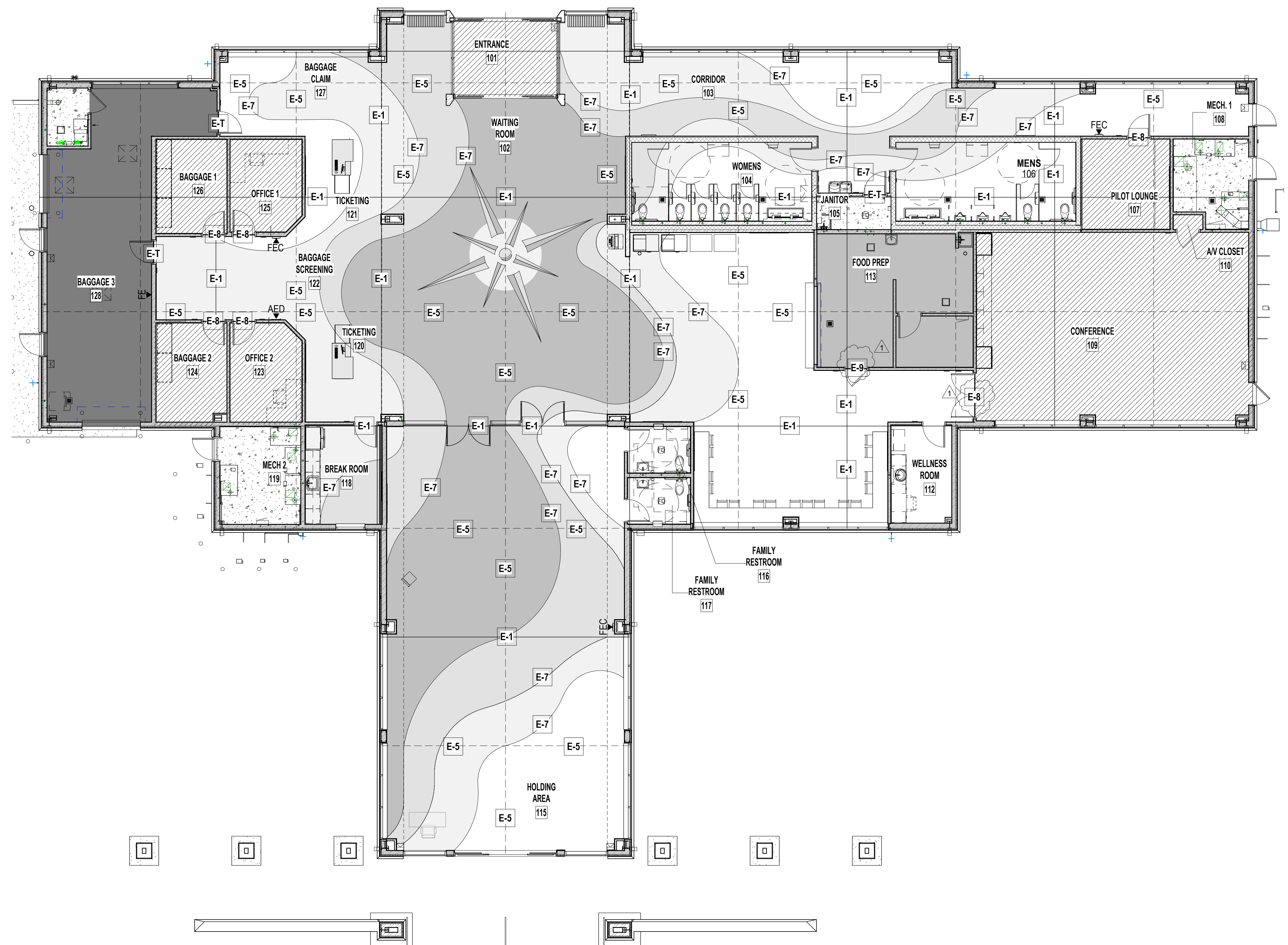
NOTES:
- ELASTOMERIC MEMBRANE AT THICKNESS AND WIDTH AS RECOMMENDED BY EPOXY TERRAZZO MANU.
- FIBERGLASS MESH REINFORCEMENT PER EPOXY MANU.

5 GUIDE DETAIL - E-5
6" = 1'-0"



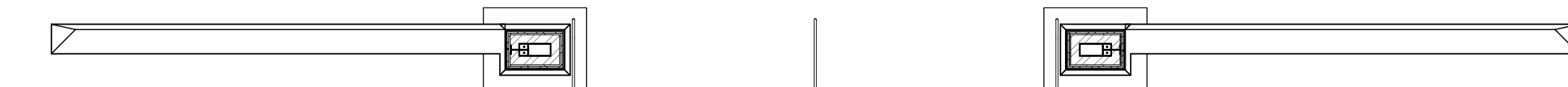
NOTES:
- SQUARE EDGES - NOT TOOLED EDGES.
- SET DIVIDER STRIP ON SHOULDER OF SAW-CUT

4 GUIDE DETAIL - E-1
6" = 1'-0"



1 FINISH FLOOR PLAN EPOXY TERRAZZO
1/8" = 1'-0"

SCALE: 1/8" = 1'-0"



3 EPOXY TERRAZZO FLOOR
3" = 1'-0"



2 EPOXY TERRAZZO COVE BASE
3" = 1'-0"

EPOXY LEGEND	
NTMA STANDARD COLORS	
[Color Box]	EP-III-71
[Color Box]	EP-I-52
[Color Box]	EP-II-61
[Color Box]	EP-II-68
GUIDE DETAILS	
[Color Box]	AS REQUIRED
[Color Box]	E-5 E-6
[Color Box]	E-7
[Color Box]	E-8
[Color Box]	E-T